



KITE REALTY GROUP
EASTGATE CROSSING
CHAPEL HILL, NC

KITE REALTY
EASTGATE CROSSING
CHAPEL HILL, NC 27514



REV.	DATE	DESCRIPTION

SITE LOCATION KEY
PLAN

KP1



EXISTING CONDITIONS
TENANT 001

KITE REALTY
EASTGATE CROSSING
EASTGATE CROSSING
CHAPEL HILL, NC 27514



REV.	DATE	DESCRIPTION

EXISTING
CONDITIONS

EX1



PROPOSED TENANT 001

MATERIAL LEGEND

	BR-1	GLEN GERY BRICK - TWILIGHT IRONSPOT WIRECUT OR SIMILAR
	BR-2	GENERAL SHALE BRICK - GRAND RIVER

REV.	DATE	DESCRIPTION



KITE REALTY
EASTGATE CROSSING
EASTGATE CROSSING
CHAPEL HILL, NC 27514

CASCO

CASCO PROFESSIONAL SERVICE, LLC
12 Sunnen Drive, Suite 100, St. Louis, MO 63143 T: 314-821-1100

PLANNING
RENDERS

PR1



EXISTING CONDITIONS
TENANT 002

KITE REALTY
EASTGATE CROSSING
EASTGATE CROSSING
CHAPEL HILL, NC 27514



REV.	DATE	DESCRIPTION

EXISTING
CONDITIONS

EX2



**PROPOSED
TENANT 002**

MATERIAL LEGEND		
	BR-1	GLEN GERY BRICK - TWILIGHT IRONSPOT WIRECUT OR SIMILAR
	BR-2	GENERAL SHALE BRICK - GRAND RIVER

REV.	DATE	DESCRIPTION



KITE REALTY
EASTGATE CROSSING
EASTGATE CROSSING
CHAPEL HILL, NC 27514



CASCO PROFESSIONAL SERVICE, LLC
12 Sunnen Drive, Suite 100, St. Louis, MO 63143 T: 314-821-1100

PLANNING
RENDERS

PR2



EXISTING CONDITIONS
TENANT 001-002

KITE REALTY
EASTGATE CROSSING
EASTGATE CROSSING
CHAPEL HILL, NC 27514



REV.	DATE	DESCRIPTION

EXISTING
CONDITIONS

EX3



**PROPOSED
TENANT 001-002**

MATERIAL LEGEND		
	BR-1	GLEN GERY BRICK - TWILIGHT IRONSPOT WIRECUT OR SIMILAR
	BR-2	GENERAL SHALE BRICK - GRAND RIVER

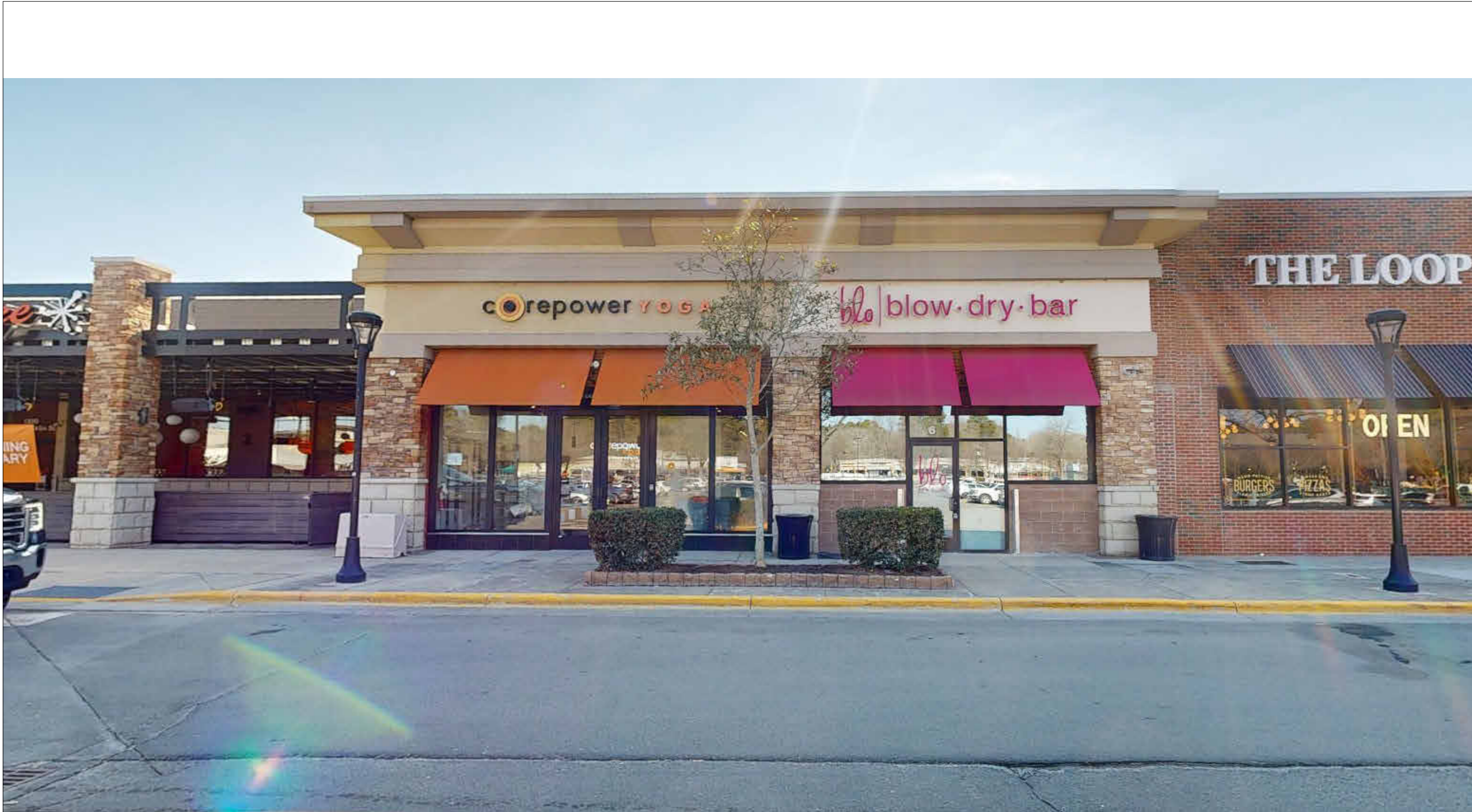
REV.	DATE	DESCRIPTION

KITE
REALTY GROUP

KITE REALTY
EASTGATE CROSSING
EASTGATE CROSSING
CHAPEL HILL, NC 27514

PLANNING
RENDERS

PR3



EXISTING CONDITIONS
TENANT 005-007

KITE REALTY
EASTGATE CROSSING

EASTGATE CROSSING
CHAPEL HILL, NC 27514



REV.	DATE	DESCRIPTION

EXISTING
CONDITIONS

EX4



**PROPOSED
TENANT 005-007**

MATERIAL LEGEND		
	BR-1	GLEN GERY BRICK - TWILIGHT IRONSPOT WIRECUT OR SIMILAR
	BR-2	GENERAL SHALE BRICK - GRAND RIVER

REV.	DATE	DESCRIPTION



KITE REALTY
EASTGATE CROSSING
EASTGATE CROSSING
CHAPEL HILL, NC 27514

CASCO
CASCO PROFESSIONAL SERVICE, LLC
12 Sunnen Drive, Suite 100, St. Louis, MO 63143 T: 314-821-1100

PLANNING
RENDERS

PR4



EXISTING CONDITIONS
TENANT 005-009

REV.	DATE	DESCRIPTION

EXISTING
CONDITIONS

EX5



KITE REALTY
EASTGATE CROSSING
EASTGATE CROSSING
CHAPEL HILL, NC 27514





**PROPOSED
TENANT 005-009**

MATERIAL LEGEND		
	BR-1	GLEN GERY BRICK - TWILIGHT IRONSPOT WIRECUT OR SIMILAR
	BR-2	GENERAL SHALE BRICK - GRAND RIVER

REV.	DATE	DESCRIPTION



KITE REALTY
EASTGATE CROSSING
EASTGATE CROSSING
CHAPEL HILL, NC 27514



CASCO PROFESSIONAL SERVICE, LLC
12 Sunnen Drive, Suite 100, St. Louis, MO 63143 T: 314-821-1100

PLANNING
RENDERS

PR5



EXISTING CONDITIONS
TENANT 005-008

KITE REALTY
EASTGATE CROSSING
EASTGATE CROSSING
CHAPEL HILL, NC 27514



REV.	DATE	DESCRIPTION

EXISTING
CONDITIONS

EX6



**PROPOSED
TENANT 005-008**

MATERIAL LEGEND		
	BR-1	GLEN GERY BRICK - TWILIGHT IRONSPOT WIRECUT OR SIMILAR
	BR-2	GENERAL SHALE BRICK - GRAND RIVER

KITE REALTY
EASTGATE CROSSING
EASTGATE CROSSING
CHAPEL HILL, NC 27514



REV.	DATE	DESCRIPTION

PLANNING
RENDERS

PR6



EXISTING CONDITIONS
TENANT 007-008

KITE REALTY
EASTGATE CROSSING
EASTGATE CROSSING
CHAPEL HILL, NC 27514



REV.	DATE	DESCRIPTION

EXISTING
CONDITIONS

EX7



**PROPOSED
TENANT 007-008**

MATERIAL LEGEND		
	BR-1	GLEN GERY BRICK - TWILIGHT IRONSPOT WIRECUT OR SIMILAR
	BR-2	GENERAL SHALE BRICK - GRAND RIVER

REV.	DATE	DESCRIPTION



KITE REALTY
EASTGATE CROSSING
EASTGATE CROSSING
CHAPEL HILL, NC 27514

CASCO
CASCO PROFESSIONAL SERVICE, LLC
12 Sunnen Drive, Suite 100, St. Louis, MO 63143 T: 314-821-1100

PLANNING
RENDERS

PR7



EXISTING CONDITIONS
TENANT 009

REV.	DATE	DESCRIPTION

EXISTING
CONDITIONS

EX8



KITE REALTY
EASTGATE CROSSING
EASTGATE CROSSING
CHAPEL HILL, NC 27514



CASCO PROFESSIONAL SERVICE, LLC
12 Sunnen Drive, Suite 100, St. Louis, MO 63143 T: 314-821-1100



PROPOSED
TENANT 009

MATERIAL LEGEND

	BR-1	GLEN GERY BRICK - TWILIGHT IRONSPOT WIRECUT OR SIMILAR
	BR-2	GENERAL SHALE BRICK - GRAND RIVER

KITE REALTY
EASTGATE CROSSING
EASTGATE CROSSING
CHAPEL HILL, NC 27514



REV.	DATE	DESCRIPTION

PLANNING
RENDERS

PR8



EXISTING CONDITIONS
TENANT 005-009

KITE REALTY
EASTGATE CROSSING
EASTGATE CROSSING
CHAPEL HILL, NC 27514



REV.	DATE	DESCRIPTION

EXISTING
CONDITIONS

EX9



PROPOSED
TENANT 005-009

MATERIAL LEGEND		
	BR-1	GLEN GERY BRICK - TWILIGHT IRONSPOT WIRECUT OR SIMILAR
	BR-2	GENERAL SHALE BRICK - GRAND RIVER

KITE REALTY
EASTGATE CROSSING
EASTGATE CROSSING
CHAPEL HILL, NC 27514



REV.	DATE	DESCRIPTION

PLANNING
RENDERS

PR9



EXISTING CONDITIONS
TENANT 020A-022

KITE REALTY
EASTGATE CROSSING
EASTGATE CROSSING
CHAPEL HILL, NC 27514



REV.	DATE	DESCRIPTION

EXISTING
CONDITIONS

EX10



PROPOSED
TENANT 020A-022

MATERIAL LEGEND		
	BR-1	GLEN GERY BRICK - TWILIGHT IRONSPOT WIRECUT OR SIMILAR

REV.	DATE	DESCRIPTION

PLANNING
RENDERS

PR10



KITE REALTY
EASTGATE CROSSING
EASTGATE CROSSING
CHAPEL HILL, NC 27514



CASCO PROFESSIONAL SERVICE, LLC
12 Sunnen Drive, Suite 100, St. Louis, MO 63143 T: 314-821-1100



EXISTING CONDITIONS
TENANT 020A-022

KITE REALTY
EASTGATE CROSSING
EASTGATE CROSSING
CHAPEL HILL, NC 27514



REV.	DATE	DESCRIPTION

EXISTING
CONDITIONS

EX11



**PROPOSED
TENANT 020A-022**

MATERIAL LEGEND		
	BR-1	GLEN GERY BRICK - TWILIGHT IRONSPOT WIRECUT OR SIMILAR

REV.	DATE	DESCRIPTION



KITE REALTY
EASTGATE CROSSING
EASTGATE CROSSING
CHAPEL HILL, NC 27514



CASCO PROFESSIONAL SERVICE, LLC
12 Sunnen Drive, Suite 100, St. Louis, MO 63143 T: 314-821-1100

PLANNING
RENDERS

PR11



EXISTING CONDITIONS
TENANT 020A-021

KITE REALTY
EASTGATE CROSSING
EASTGATE CROSSING
CHAPEL HILL, NC 27514



REV.	DATE	DESCRIPTION

EXISTING
CONDITIONS

EX12



PROPOSED
TENANT 020A-021

MATERIAL LEGEND		
	BR-1	GLEN GERY BRICK - TWILIGHT IRONSPOT WIRECUT OR SIMILAR

REV.	DATE	DESCRIPTION



KITE REALTY
EASTGATE CROSSING
EASTGATE CROSSING
CHAPEL HILL, NC 27514

CASCO
CASCO PROFESSIONAL SERVICE, LLC
12 Sunnen Drive, Suite 100, St. Louis, MO 63143 T: 314-821-1100

PLANNING
RENDERS

PR12



EXISTING CONDITIONS
TENANT 021-022

REV.	DATE	DESCRIPTION

EXISTING
CONDITIONS

EX13



KITE REALTY
EASTGATE CROSSING
EASTGATE CROSSING
CHAPEL HILL, NC 27514

CASCO
CASCO PROFESSIONAL SERVICE, LLC
12 Sunnen Drive, Suite 100, St. Louis, MO 63143 T: 314-821-1100



**PROPOSED
TENANT 021-022**

MATERIAL LEGEND		
	BR-1	GLEN GERY BRICK - TWILIGHT IRONSPOT WIRECUT OR SIMILAR

REV.	DATE	DESCRIPTION

PLANNING
RENDERS

PR13



KITE REALTY
EASTGATE CROSSING
EASTGATE CROSSING
CHAPEL HILL, NC 27514



CASCO PROFESSIONAL SERVICE, LLC
12 Sunnen Drive, Suite 100, St. Louis, MO 63143 T: 314-821-1100



EXISTING CONDITIONS
TENANT 020A-022

KITE REALTY
EASTGATE CROSSING
EASTGATE CROSSING
CHAPEL HILL, NC 27514



REV.	DATE	DESCRIPTION

EXISTING
CONDITIONS

EX14



PROPOSED
TENANT 020A-022

MATERIAL LEGEND		
	BR-1	GLEN GERY BRICK - TWILIGHT IRONSPOT WIRECUT OR SIMILAR

REV.	DATE	DESCRIPTION



KITE REALTY
EASTGATE CROSSING
EASTGATE CROSSING
CHAPEL HILL, NC 27514

CASCO
CASCO PROFESSIONAL SERVICE, LLC
12 Sunnen Drive, Suite 100, St. Louis, MO 63143 T: 314-821-1100

PLANNING
RENDERS

PR14



EXISTING CONDITIONS
TENANT C

REV.	DATE	DESCRIPTION

EXISTING
CONDITIONS

EX15



KITE REALTY
EASTGATE CROSSING
EASTGATE CROSSING
CHAPEL HILL, NC 27514

CASCO

CASCO PROFESSIONAL SERVICE, LLC
12 Sunnen Drive, Suite 100, St. Louis, MO 63143 T: 314-821-1100



PROPOSED
TENANT C

MATERIAL LEGEND		
	PB-2	RED PAINTED BRICK TO MATCH EXISTING

REV.	DATE	DESCRIPTION



KITE REALTY
EASTGATE CROSSING
EASTGATE CROSSING
CHAPEL HILL, NC 27514

CASCO
CASCO PROFESSIONAL SERVICE, LLC
12 Sunnen Drive, Suite 100, St. Louis, MO 63143 T: 314-821-1100

PLANNING
RENDERS

PR15



EXISTING CONDITIONS
TENANT C

REV.	DATE	DESCRIPTION

EXISTING
CONDITIONS


EX16



KITE REALTY
EASTGATE CROSSING
EASTGATE CROSSING
CHAPEL HILL, NC 27514



**PROPOSED
TENANT C**

MATERIAL LEGEND		
	PB-2	RED PAINTED BRICK TO MATCH EXISTING

REV.	DATE	DESCRIPTION



KITE REALTY
EASTGATE CROSSING
EASTGATE CROSSING
CHAPEL HILL, NC 27514

CASCO
CASCO PROFESSIONAL SERVICE, LLC
12 Sunnen Drive, Suite 100, St. Louis, MO 63143 T: 314-821-1100

PLANNING
RENDERS

PR16



EXISTING CONDITIONS
TENANT C



REV.	DATE	DESCRIPTION

KITE REALTY
EASTGATE CROSSING
EASTGATE CROSSING
CHAPEL HILL, NC 27514



CASCO
CASCO PROFESSIONAL SERVICE, LLC
12 Sunnen Drive, Suite 100, St. Louis, MO 63143 T: 314-821-1100

EXISTING
CONDITIONS

EX17



**PROPOSED
TENANT C**

MATERIAL LEGEND		
	PB-2	RED PAINTED BRICK TO MATCH EXISTING
	PB-3	PAINTED BREEZE BLOCK (EXISTING) TO CHARCOAL COLOR

REV.	DATE	DESCRIPTION



KITE REALTY
EASTGATE CROSSING
EASTGATE CROSSING
CHAPEL HILL, NC 27514



CASCO PROFESSIONAL SERVICE, LLC
12 Sunnen Drive, Suite 100, St. Louis, MO 63143 T: 314-821-1100

PLANNING
RENDERS

PR17



EXISTING CONDITIONS
TENANT C

KITE REALTY
EASTGATE CROSSING
EASTGATE CROSSING
CHAPEL HILL, NC 27514



REV.	DATE	DESCRIPTION

EXISTING
CONDITIONS

EX18



PROPOSED
TENANT C

MATERIAL LEGEND		
	PB-2	RED PAINTED BRICK TO MATCH EXISTING

REV.	DATE	DESCRIPTION



KITE REALTY
EASTGATE CROSSING
EASTGATE CROSSING
CHAPEL HILL, NC 27514

PLANNING
RENDERS

PR18

CASCO
CASCO PROFESSIONAL SERVICE, LLC
12 Sunnen Drive, Suite 100, St. Louis, MO 63143 T: 314-821-1100