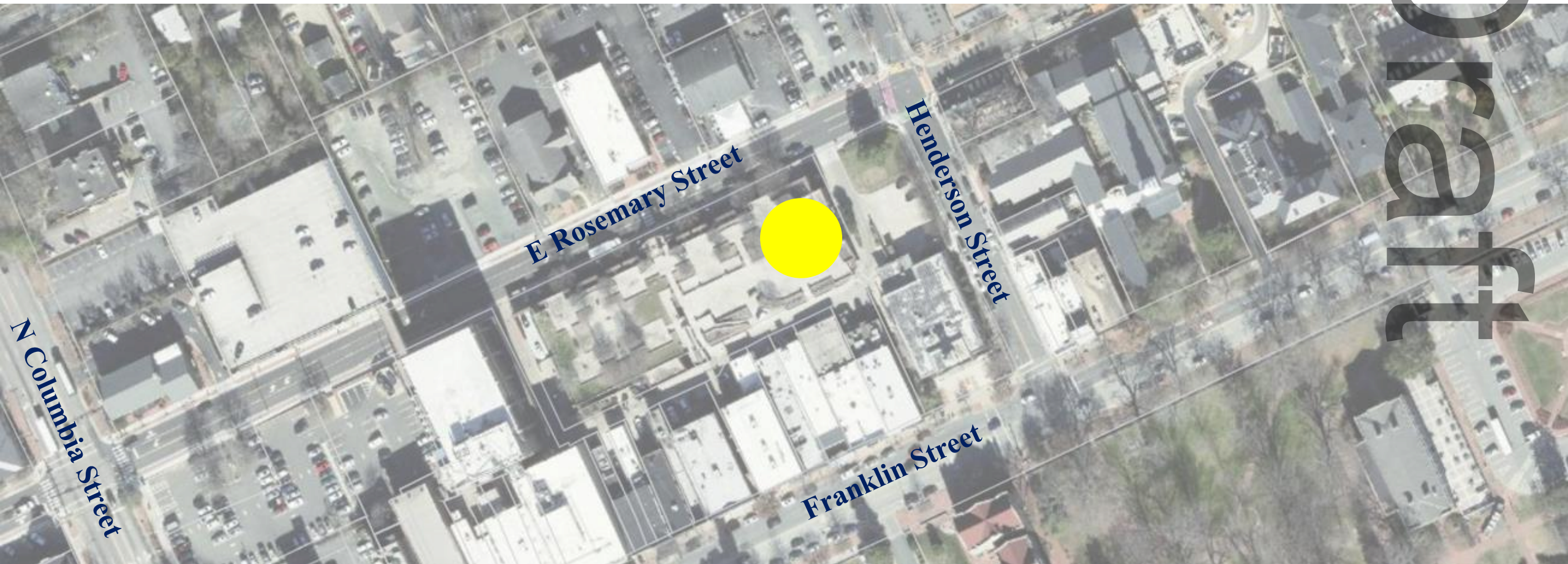




# TOWN COUNCIL

CONDITIONAL ZONING  
10.27.2021

150 E Rosemary Street

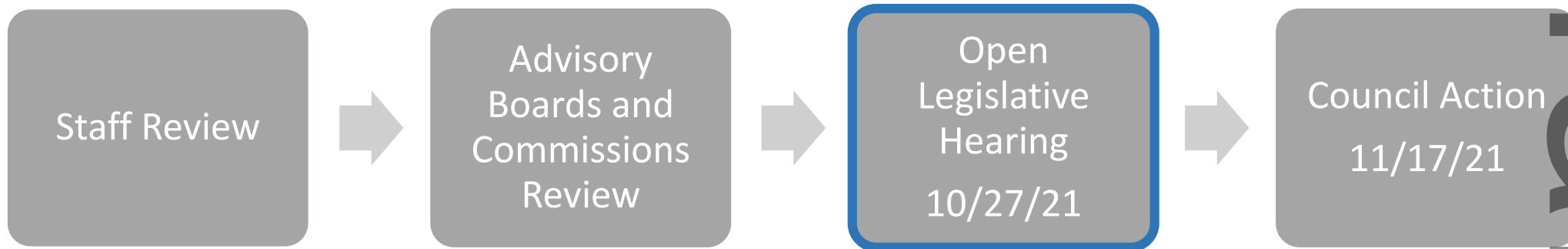


Draft



# PROCESS

---



Draft



# RECOMMENDATION

---

- ☐ Open the Legislative Hearing
- ☐ Receive comments
- ☐ Continue the hearing to November 17, 2021







# PROJECT SUMMARY

---

- ❑ 1.5 acre site
- ❑ Conditional Zoning
- ❑ Currently TC-2
- ❑ Proposing TC-3-CZD
- ❑ Existing Wallace Deck
- ❑ Construct a 7-story lab and office building above 3 levels of underground parking





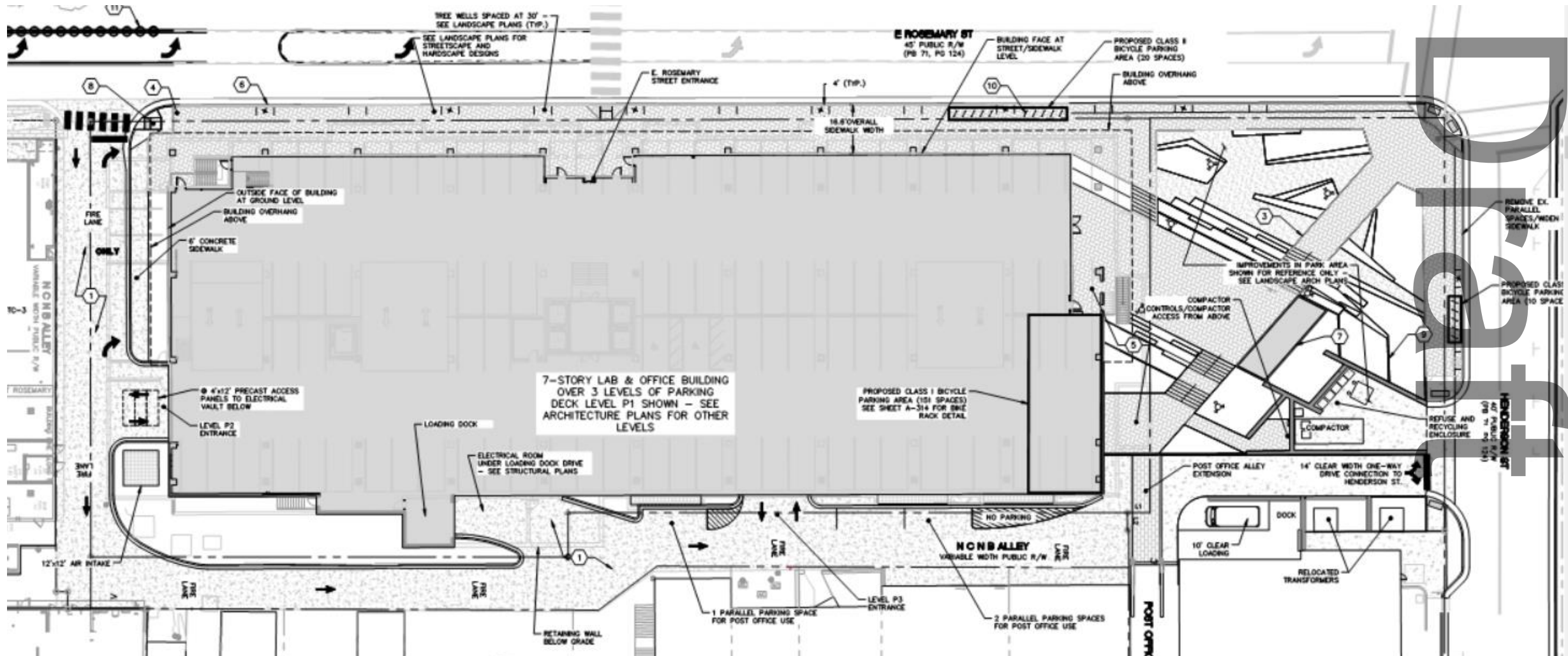
# EXISTING CONDITIONS







# SITE PLAN

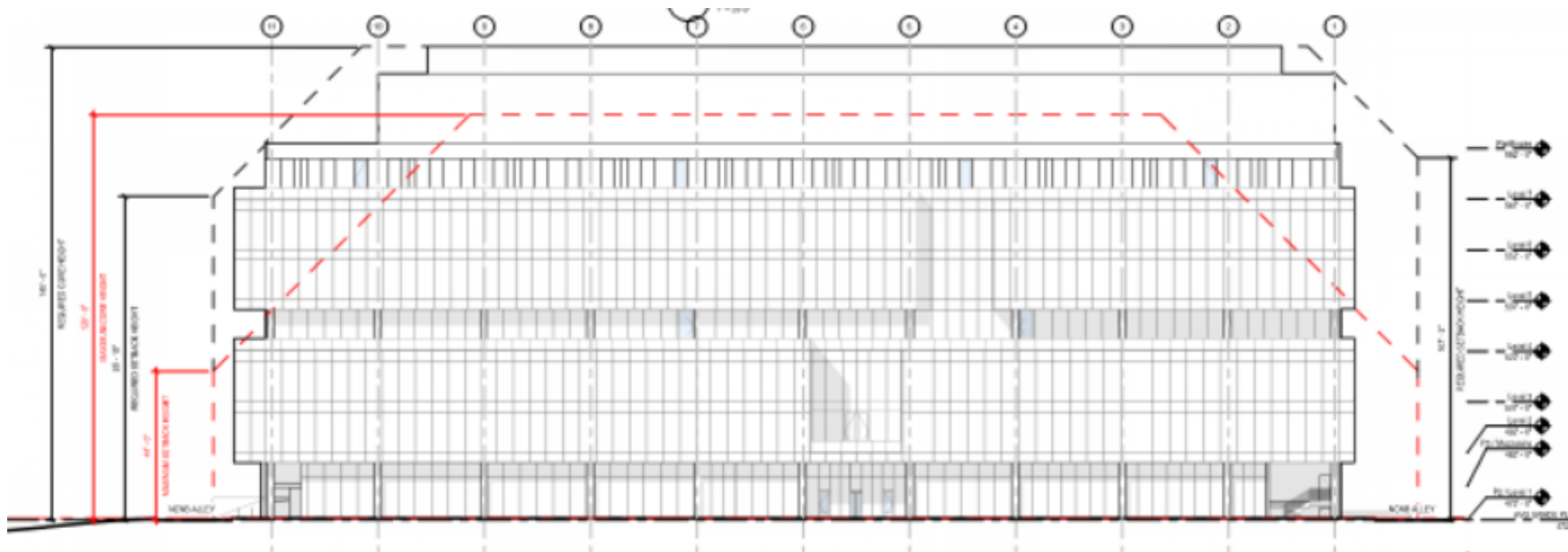




# PROPOSED MODIFICATIONS

Requesting modification to regulations for:

- ❑ Maximum primary height from 44' to 112'
- ❑ Maximum secondary height from 120' to 140'



Draft



# RECOMMENDATION

---

- ☐ Open the Legislative Hearing
- ☐ Receive comments
- ☐ Continue the hearing to November 17, 2021

