



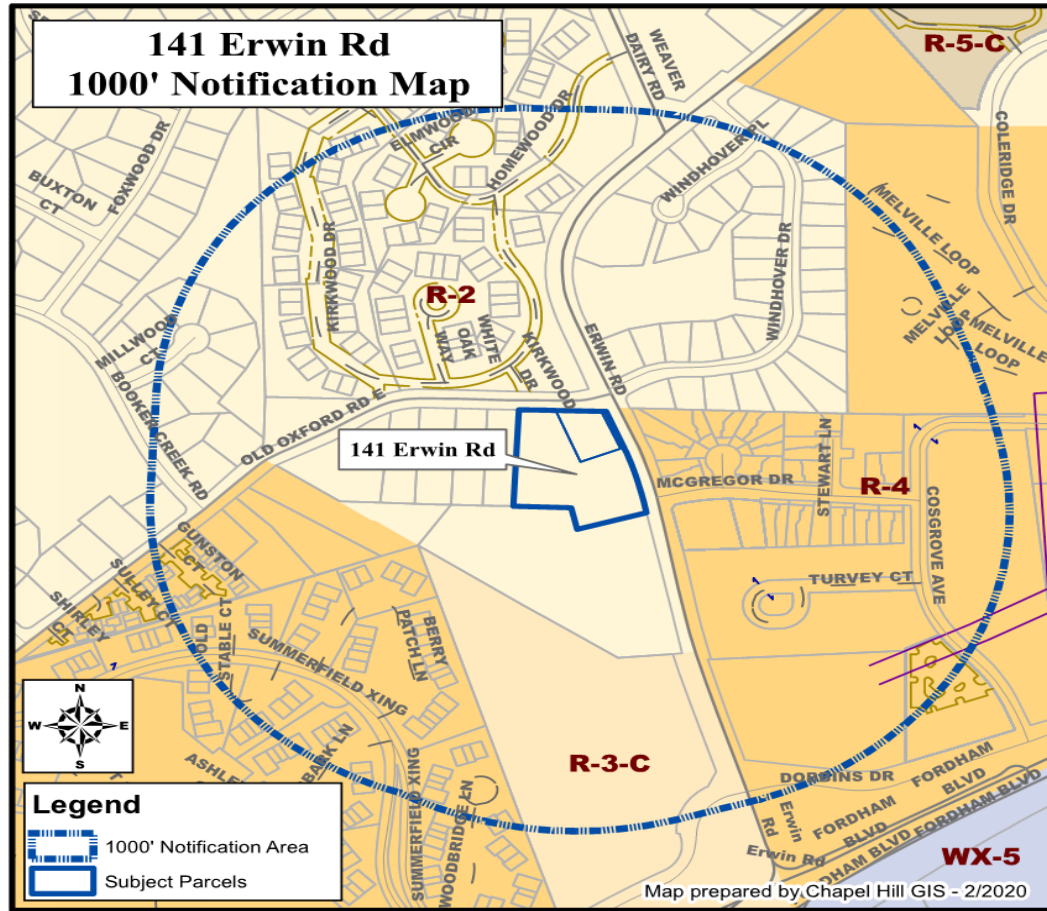
Application for Special Use Permit

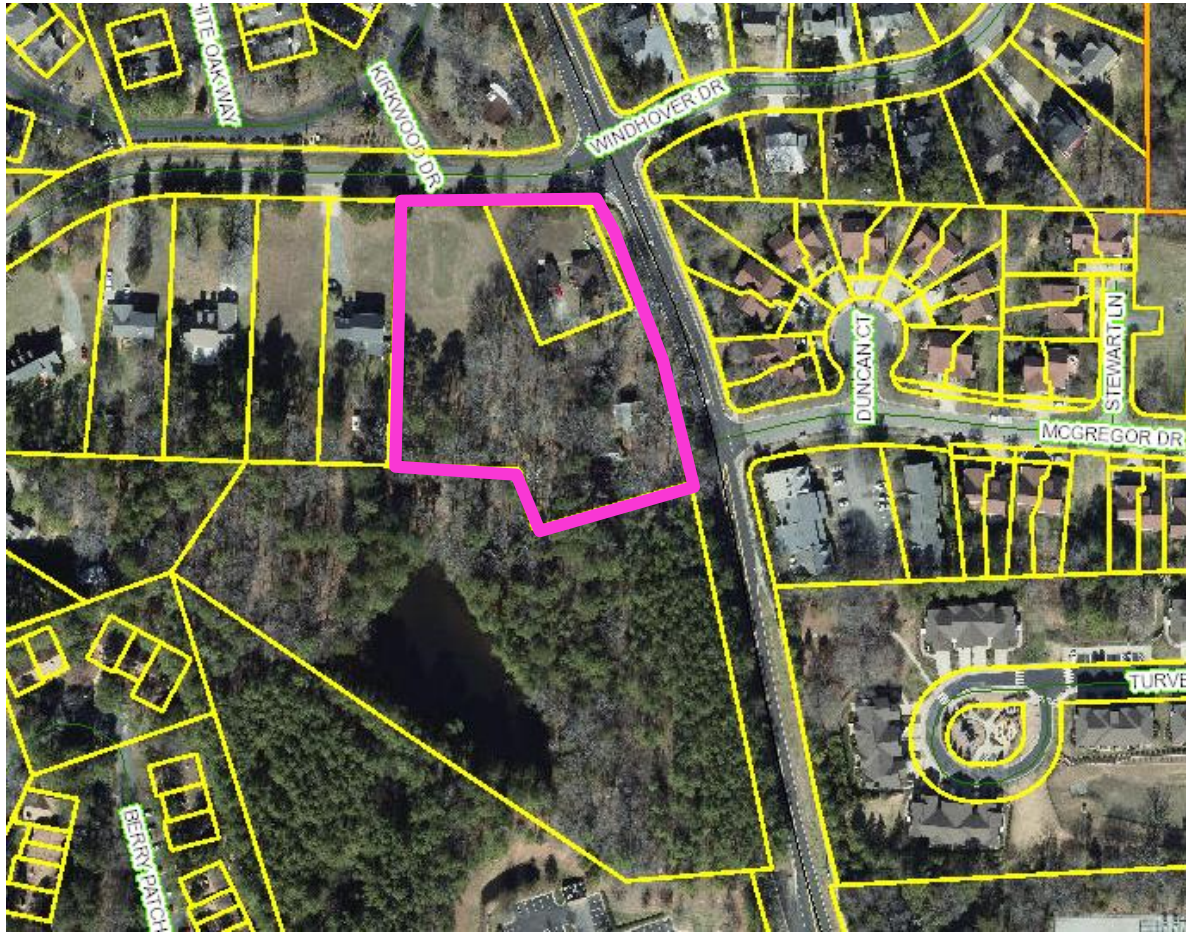
Christ Community Church

141 Erwin Road

Transportation and Connectivity Advisory
Board

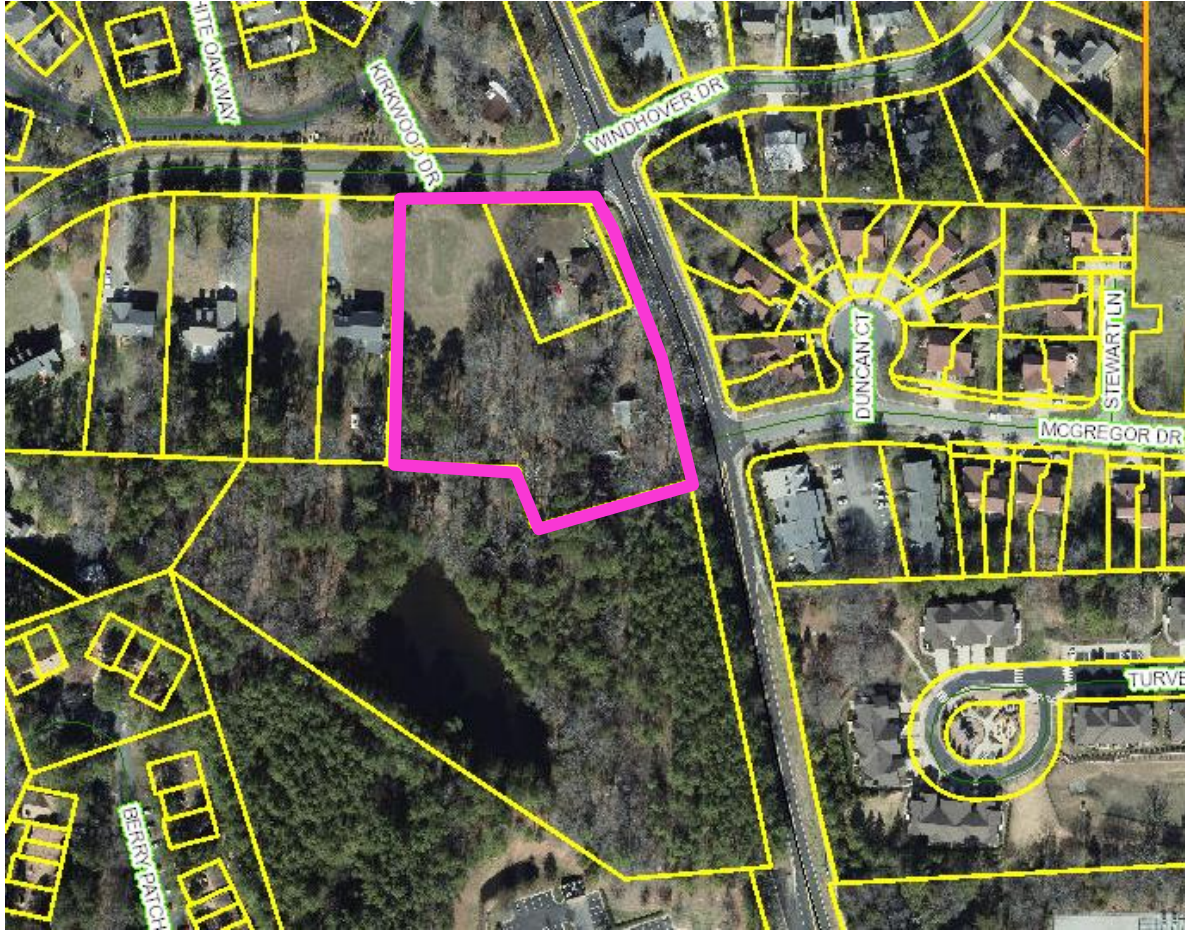
April 28, 2020





Overview

- Place of Worship
- 2.56 acres
- Existing use:
Single Family /
Vacant



Overview (continued)

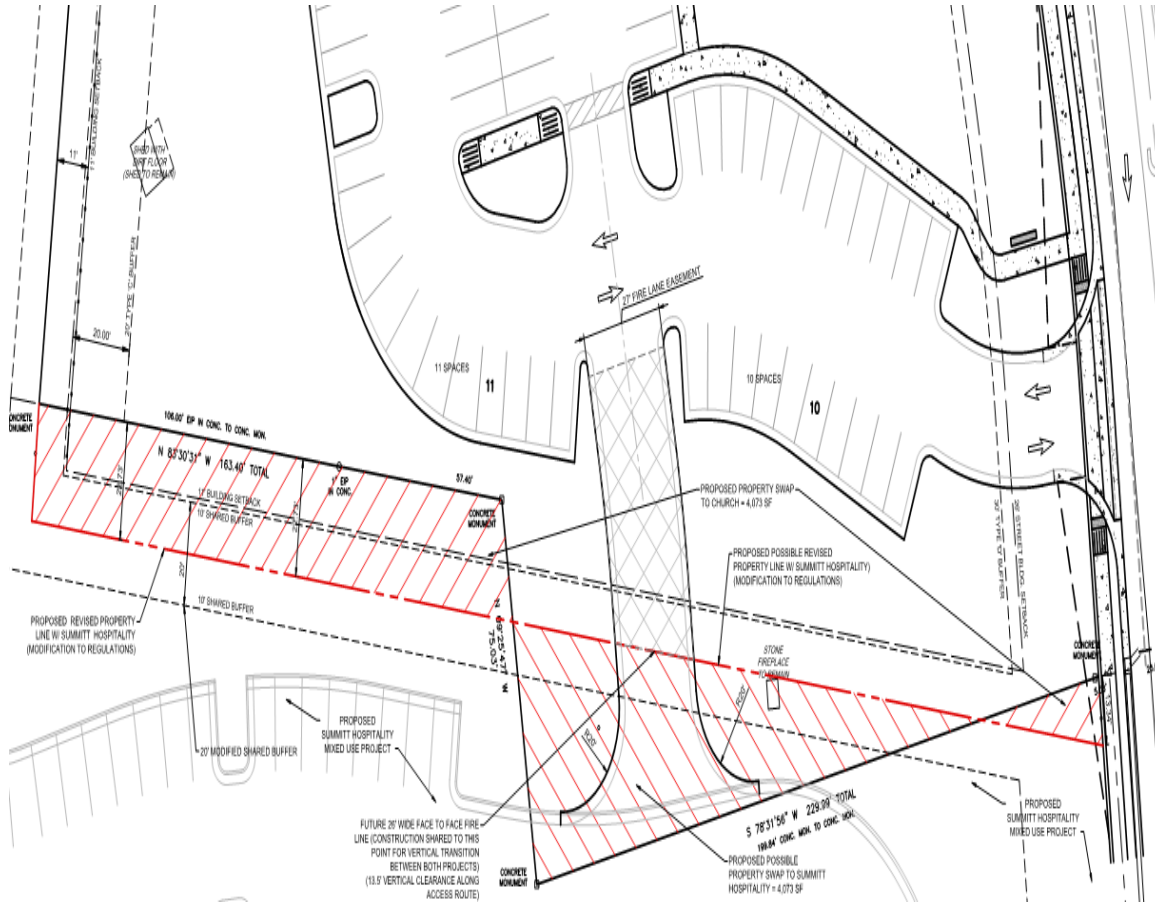
- 11,420 SF

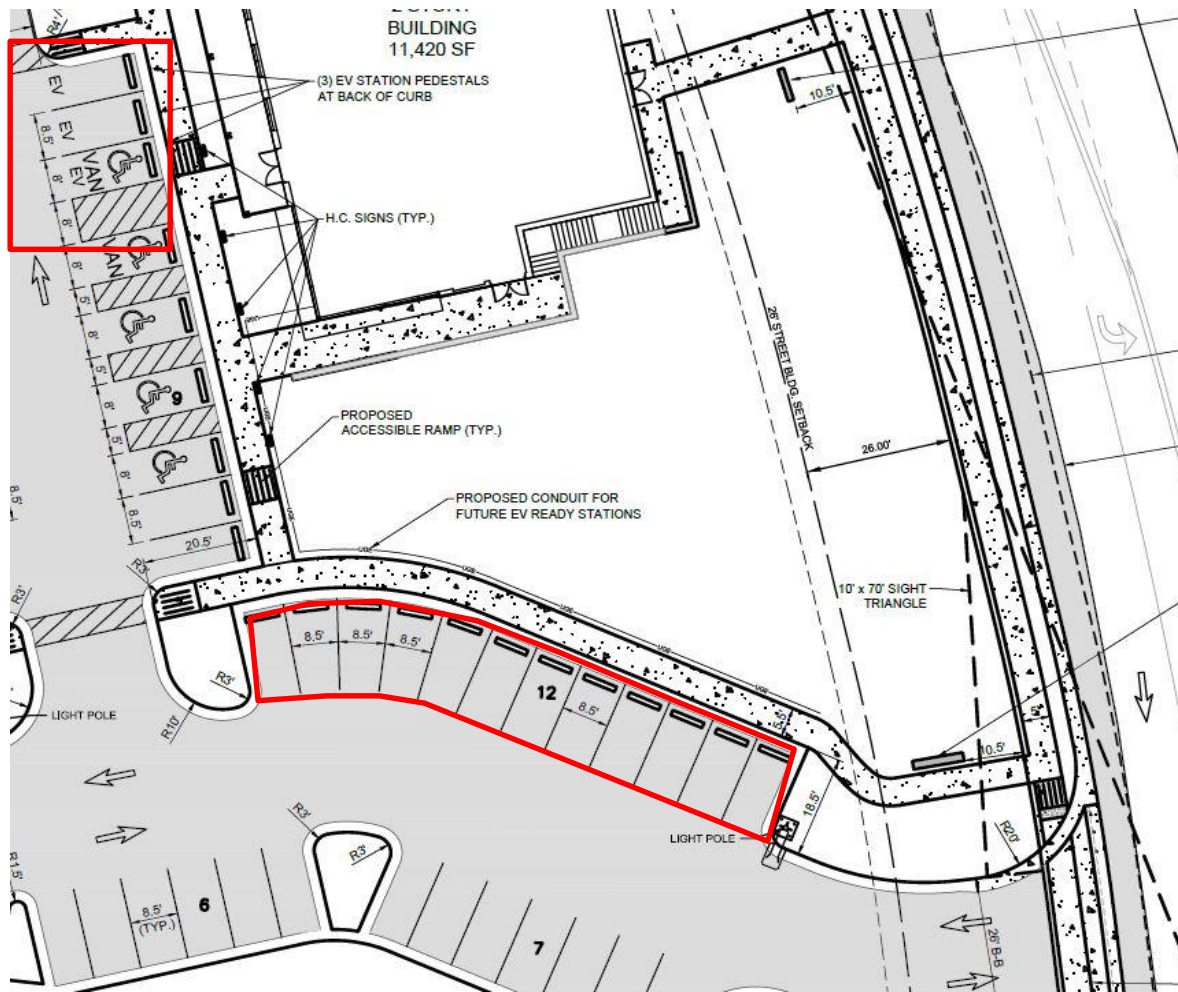
- Worship area
- classrooms
- Church office

Site details (continued)

Future access point

- Marriott
Redevelopment





Site details

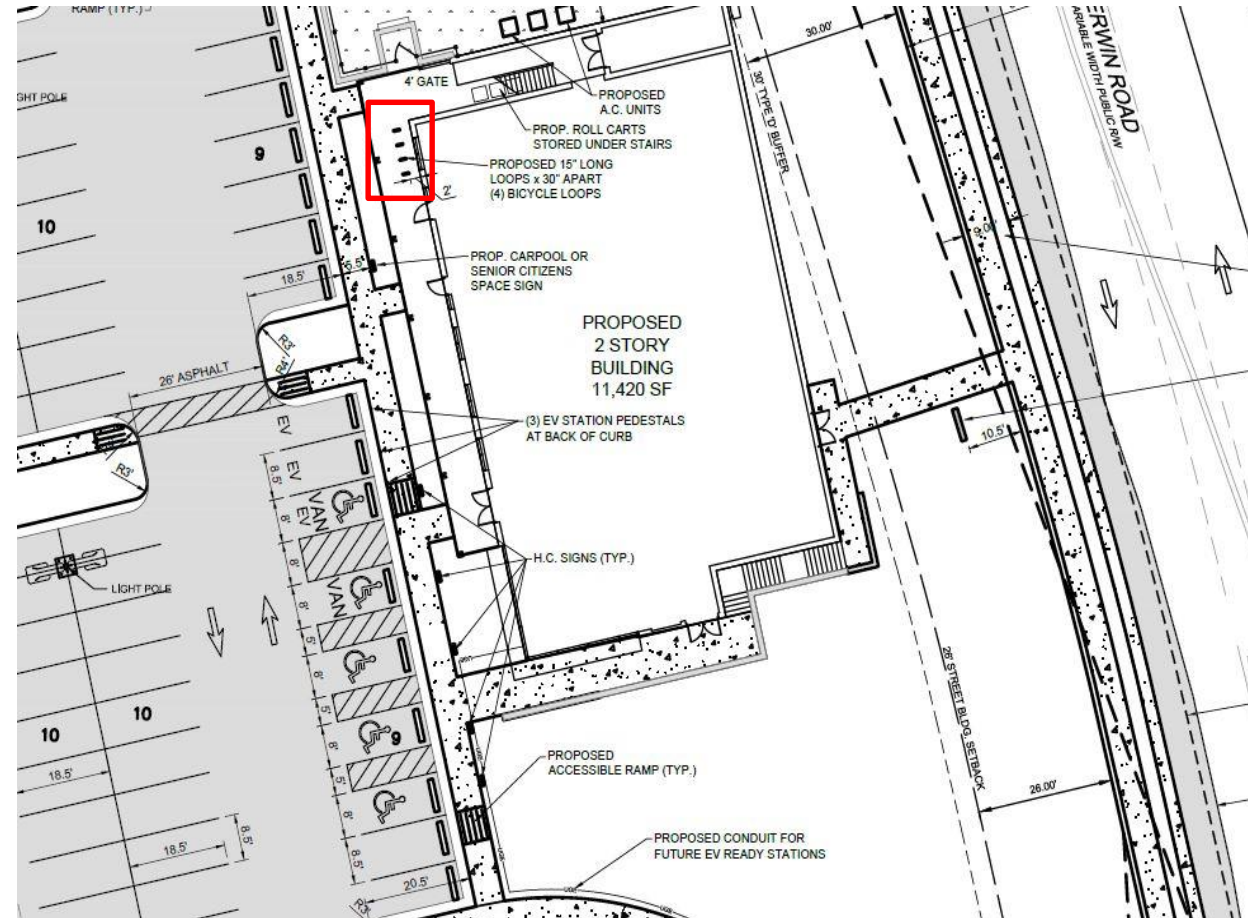
3 EV charging
stations

15 'EV Ready'
spaces

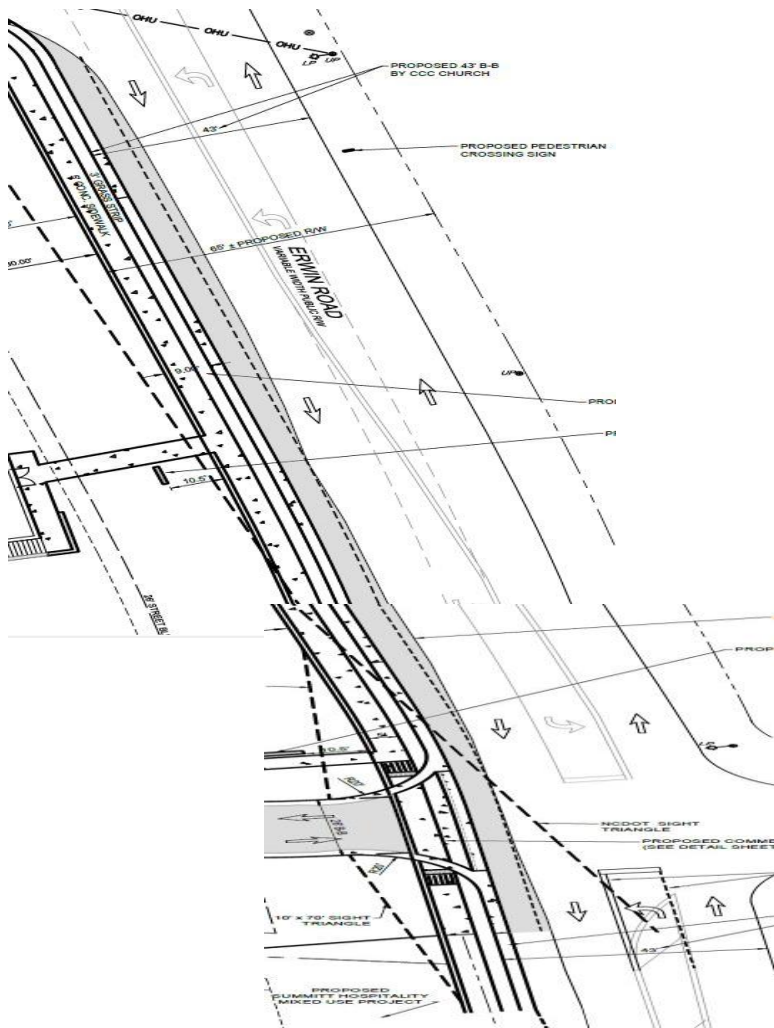
Site details (continued)

8 bike parking spaces

- (LUMO requires a minimum of 8, 1 per 50 seats)



Site details (continued)



Sidewalk network

- Frontage
- Throughout the site

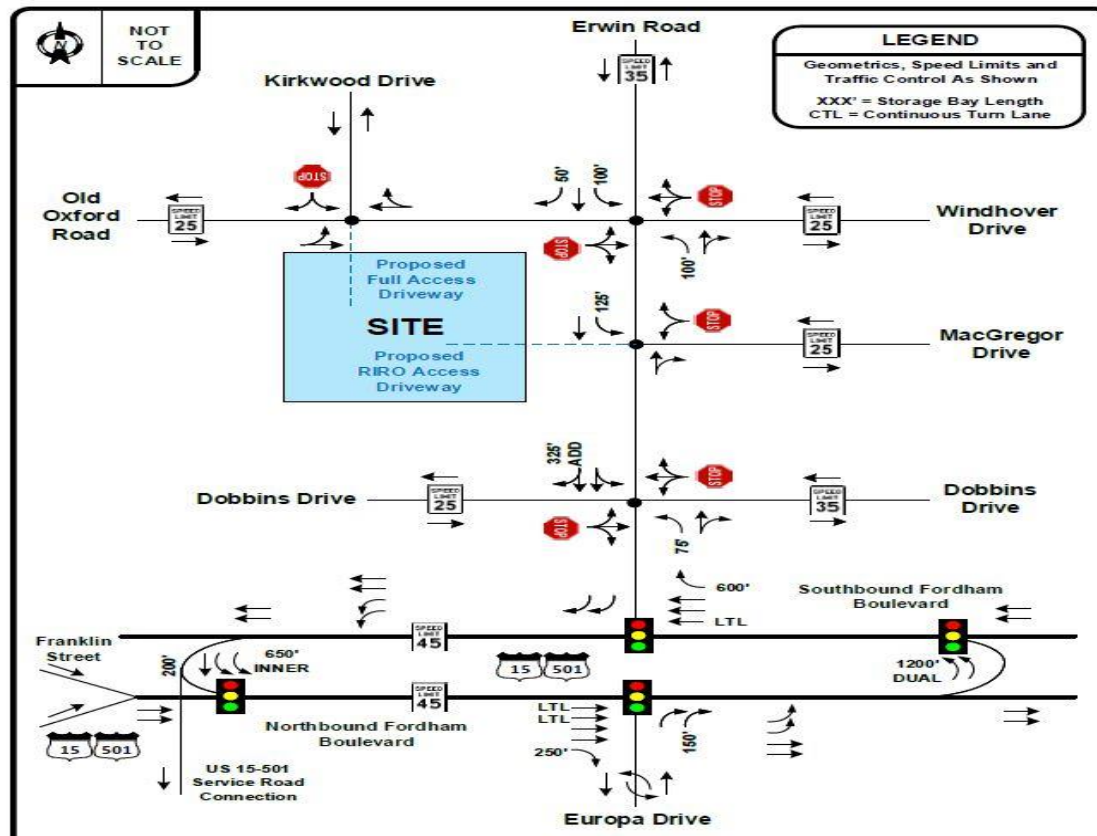
- Frontage
- Throughout the site

TIA:

- Required
- New development



Traffic Impact Analysis

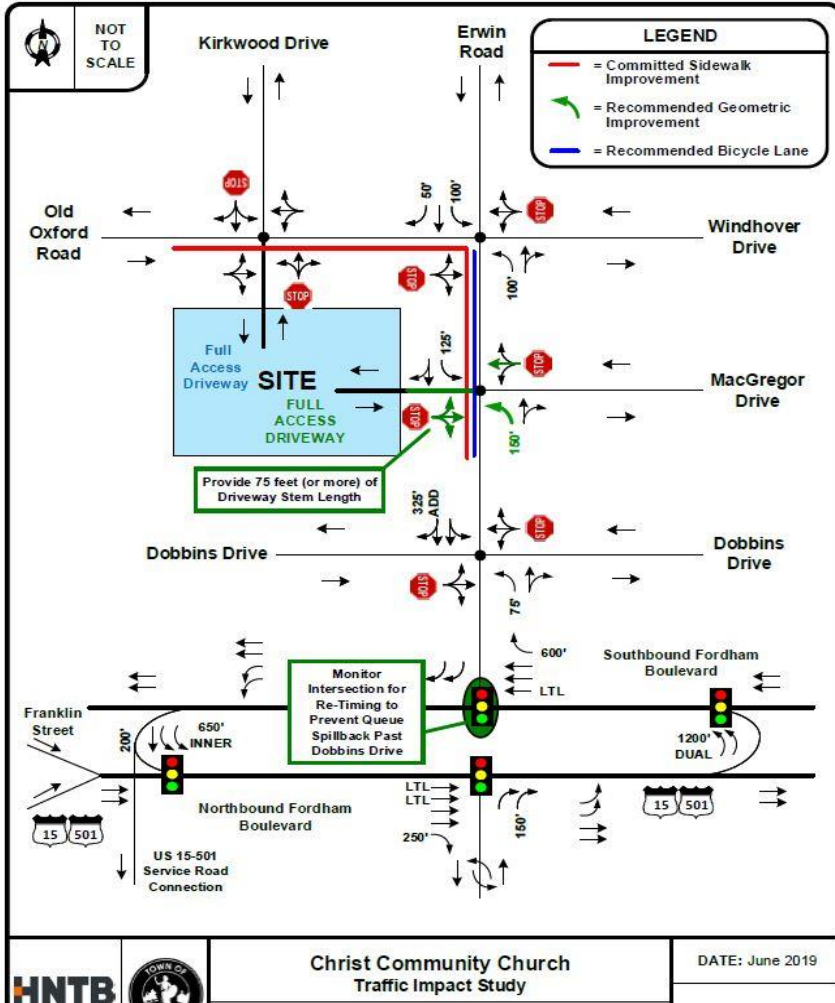


Traffic Impact Analysis (continued)

Table ES-2. Sunday AM Peak Hour LOS and Delay (Seconds/Vehicle) Summary

Intersections	2019 Existing		2025 No-Build		2025 Build		2025 Build – Full Access on Erwin	
	LOS	Delay	LOS	Delay	LOS	Delay	LOS	Delay
Old Oxford Road and Kirkwood Drive / Proposed Full Access Site Driveway#	A	9.0	A	9.0	A	9.5	A	9.3
Erwin Road and Old Oxford Road / Windhover Drive#	C	16.4	C	17.7	C	20.8	C	19.7
Erwin Road and McGregor Drive / Proposed Site RIRO Driveway#	C	11.2	C	11.6	C	15.7	C	16.2
Erwin Road and Dobbins Drive#	C	16.1	C	18.4	C	21.7	Results are Same as 2025 Build Scenario	
US 15-501 Northbound and Southbound U-Turn / Thru to 15-501 Service Road	A	7.9	A	9.0	A	11.2		
US 15-501 Northbound and Europa Drive	B	10.3	B	10.1	B	10.1		
US 15-501 Southbound and Northbound U-Turn	B	15.5	B	16.2	B	16.3		
US 15-501 Southbound and Erwin Road	C	26.2	C	28.3	D	41.0		

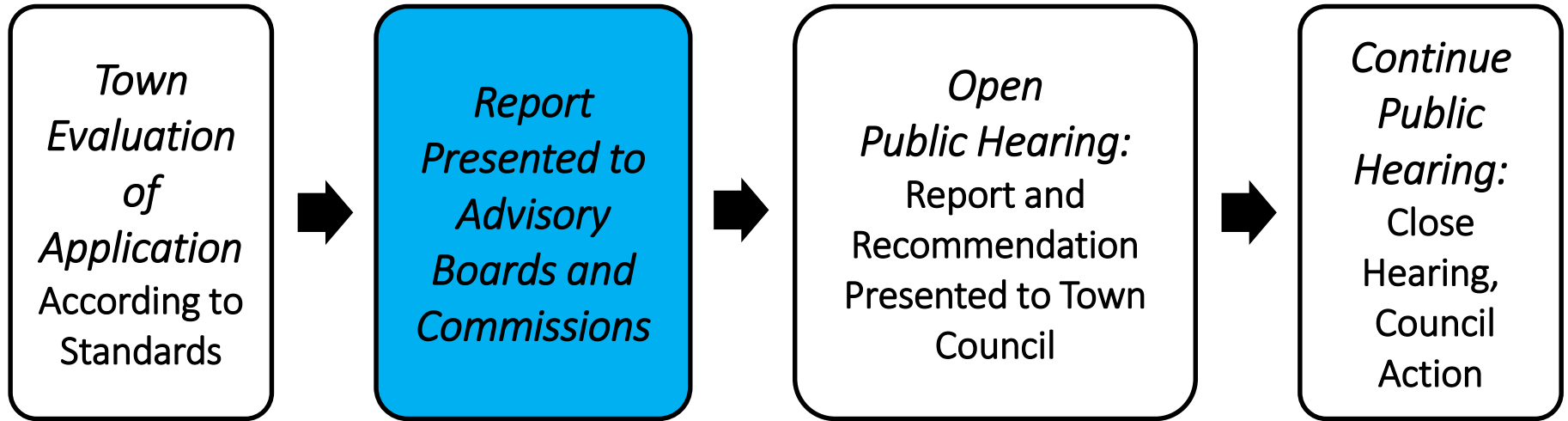
- Worst-Case LOS/Delay for Unsignalized/Stop-Controlled Critical Movement



Traffic Impact Analysis (continued)

- Improvements
 - Full Access Points
 - Left Turn Lane (Erwin Road)
 - Widen Erwin Road & Old Oxford Road

Process



Site Overview: Access and Circulation

Design/LUMO Standards	Comment	Status
Sec 5.8 Road Improvements	Widening Erwin Road, including left turn lane, and Old Oxford Ford	✓
Sec 5.8 Vehicular Access	Full access to Erwin Road and Old Oxford Road, Connector	✓

Site Overview: Access and Circulation (continued)

Design/LUMO Standards	Comment	Status
Sec 5.8 Bicycle Improvements	Bike lane on Erwin Road	✓
Sec 5.8 Pedestrian Improvements	Sidewalks along the frontage and throughout the site.	✓

Site Overview: Access and Circulation (continued)

Design/LUMO Standards	Comment	Status
Sec 5.9 Vehicular Parking	117 parking spaces (LUMO requires 1 per 2 seats)	✓
Sec 5.9 Bicycle Parking	8 bike parking spaces (LUMO requires 1 per 50 seats, 8 min).	✓

Site Overview: Access and Circulation (continued)

Design/LUMO Standards	Comment	Status
Sec 5.9	TIA completed	✓
Sec 5.9 Parking Lot Standards	Built to Town Standards	✓

Recommendation to Town Council

- Approval
- Approval with Conditions
- Denial