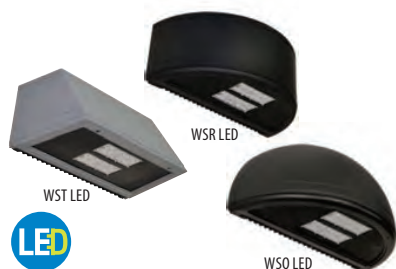


# WST LED WSR LED WSQ LED

## Architectural Wall Sconce



### Intended Use

For building- and wall-mounted applications.

### Features

- Designed to replace up to 175W MH luminaire while saving up to 75% in energy
- LEDs deliver an expected service life of more than 100,000 hours and eliminate the frequent lamp changes associated with traditional sources
- An optional integral emergency battery backup eliminates the need for a bulky back box while still providing the benefits of emergency illumination
- User-friendly mounting bracket features an embedded bubble level for easy positioning while support rods hold

the weight of the luminaire so wiring can be done quickly and easily

- Capable of inverted mounting, the luminaire can be positioned to provide upward illumination on a building's façade
- An optional occupancy sensor allows the luminaire to dim and save more energy while the area is unoccupied

### Listings

UL Listed suitable for wet locations (damp location listed in lens-up orientation). CSA Certified (see Options). IP65 rated. DesignLights Consortium® qualified product.



### ORDERING INFORMATION

Specifications subject to change.

Example: WST LED 2 10A700/40K SR3 MVOLT DDBTXD

Series	Light engines	Performance package	Distribution	Voltage	Mounting
WST LED	1 One engine (10 LEDs)	700 mA options:	SR2 Type II	MVOLT <sup>1</sup>	Shipped included
WSR LED	2 Two engines (20 LEDs)	10A700/30K 3000K	SR3 Type III	120 <sup>1</sup>	(blank) Surface mount
WSQ LED		10A700/40K 4000K	SR4 Type IV	208 <sup>1</sup>	Shipped separately <sup>2</sup>
		10A700/50K 5000K		240 <sup>1</sup>	BBW Surface-mounted back box
				277 <sup>1</sup>	UT5 Uptilt 5 degrees
				347 <sup>1</sup>	
				480	

### Options<sup>3</sup>

#### Shipped installed

PE	Photoelectric cell, button type <sup>4,5</sup>
SF	Single fuse (120, 277, 347V) <sup>4</sup>
DF	Double fuse (208, 240, 480V) <sup>4</sup>
DMG	0-10V dimming driver (no controls)
ELCW	Emergency battery backup <sup>6</sup>

WLU	Wet location door for up orientation
PIR	Motion/ambient light sensor <sup>7</sup>
Shipped separately	
VG	Vandal guard
WG	Wire guard

### Finish

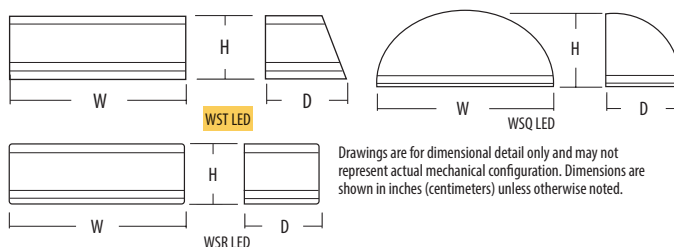
DDBXD	Dark bronze	DDBTXD	Textured dark bronze
DBLXD	Black	DBLTXD	Textured black
DNAXD	Natural aluminum	DNATXD	Textured natural aluminum
DWHXD	White	DWHGXD	Textured white
DSSXD	Sandstone	DSSTXD	Textured sandstone

### ADDITIONAL INFORMATION

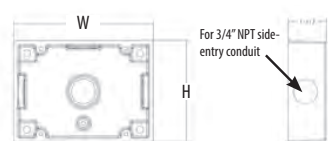
For additional product information, visit [www.lithonia.com](http://www.lithonia.com).

SPECIFICATIONS				
SERIES	HEIGHT	WIDTH	DEPTH	WEIGHT
WST LED	7-1/4" (18.4 cm)	16-1/4" (41.3 cm)	9" (22.8 cm)	17 lbs (7.7 kg)
WSR LED	7-1/4" (18.4 cm)	16-1/4" (41.3 cm)	9" (22.8 cm)	17 lbs (7.7 kg)
WSQ LED	7-1/4" (18.4 cm)	16-1/4" (41.3 cm)	9-1/8" (23.2 cm)	17 lbs (7.7 kg)

OPTIONAL BACK BOX (BBW)		
HEIGHT	WIDTH	DEPTH
4" (10.2 cm)	5-1/2" (14.0 cm)	1-1/2" (3.8 cm)



Drawings are for dimensional detail only and may not represent actual mechanical configuration. Dimensions are shown in inches (centimeters) unless otherwise noted.



### Notes

- MVOLT driver operates on any line voltage from 120-277V (50/60 Hz). Specify 120, 208, 240 or 277 options only when ordering with photocell (PE option) or fusing (SF, DF options).
- May also be ordered separately as an accessory. Ex: WSBWW DDBXD U. Must specify finish.
- Must be ordered with fixture; cannot be field installed.
- Not available with MVOLT option. Button photocell (PE) can be ordered with a dedicated voltage option. Single fuse (SF) requires 120,

277 or 347 voltage option. Double fuse (DF) requires 208, 240 or 480 voltage option.

- Not available with 480V option. Not available with motion/ambient light sensor (PIR).
- Integral battery pack is rated for -20° to 60°C operating temperature. ELCW warranty is 3 year period. Not available with 347V or 480V.
- Specifies the Sensor Switch SFD-7-ODP control (photocell included); see Motion Sensor Guide for details. Includes ambient light sensor. Not available with "PE" option (button type photocell). Dimming driver standard. Not available with WLU, VG or WG.