



FRONT (EAST FRANKLIN) ELEVATION



REAR ELEVATION

SCALE: 1" = 10'-0"



Quality Automotive Services, Inc.
8000 Tower Point Dr
Charlotte, NC 28227
704 226 1900 - office
704 254 7242 - mobile
thelms@ncvloc.com

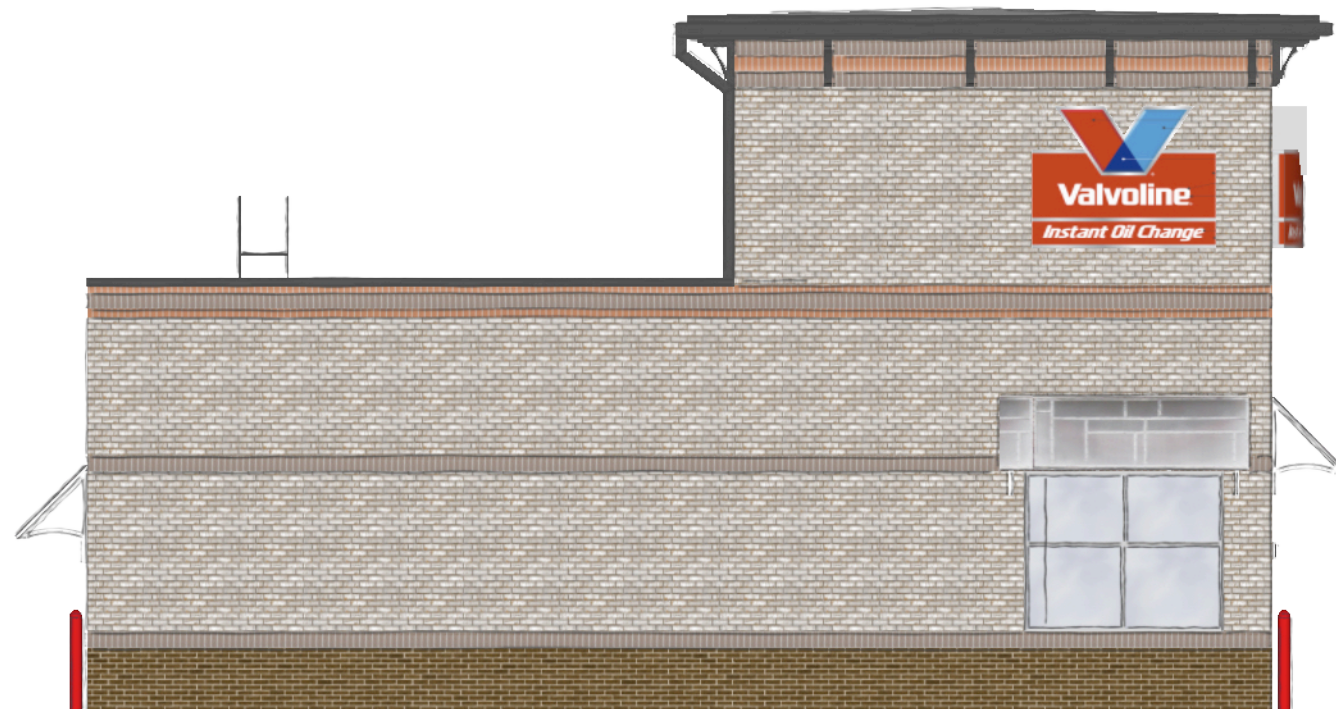
This drawing is the property of
Quality Automotive and is for the
sole use of the intended recipient
(Owner / Occupant / Subcontractor)
and is not to be shared with any
third party for any purpose without
the express written consent of QAS.

Document Date:
September 9, 2019

November 13, 2019
- sign calculations
- total building height dim

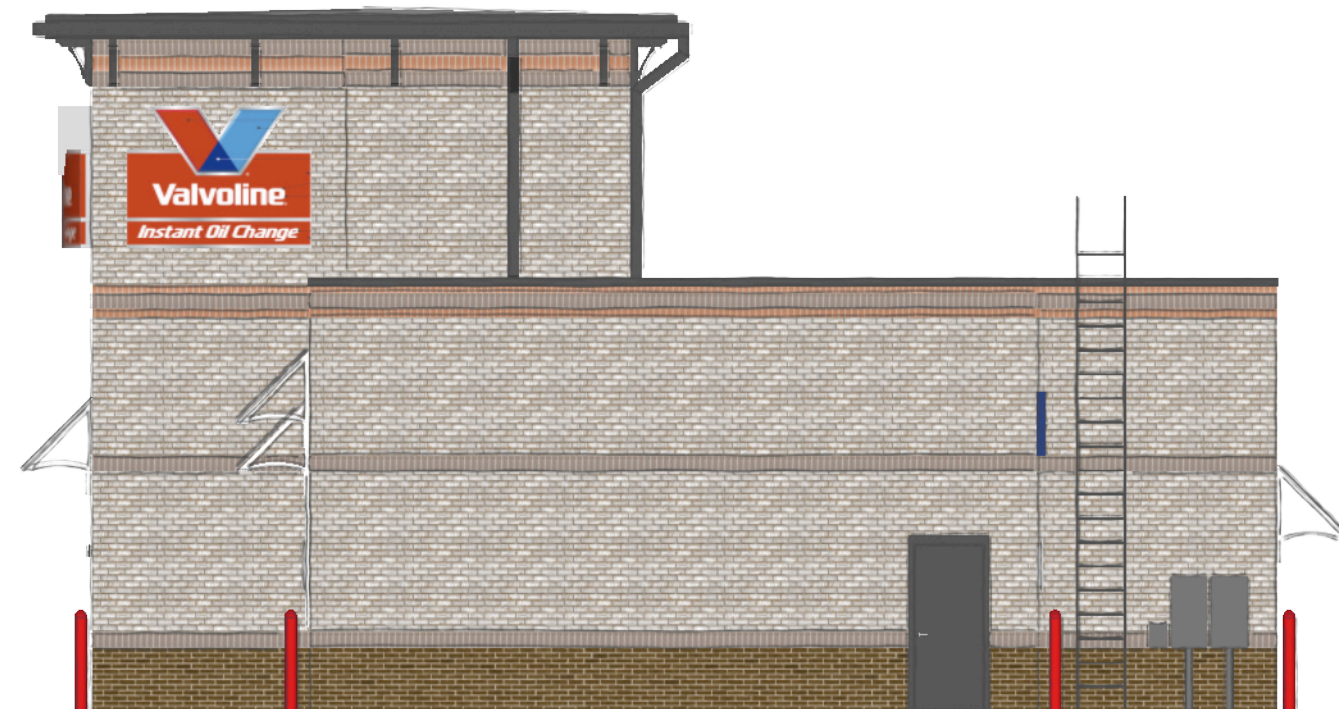
VALVOLINE INSTANT OIL AT CHAPEL HILL
1510 E Franklin St.
Chapel Hill, NC

elevations

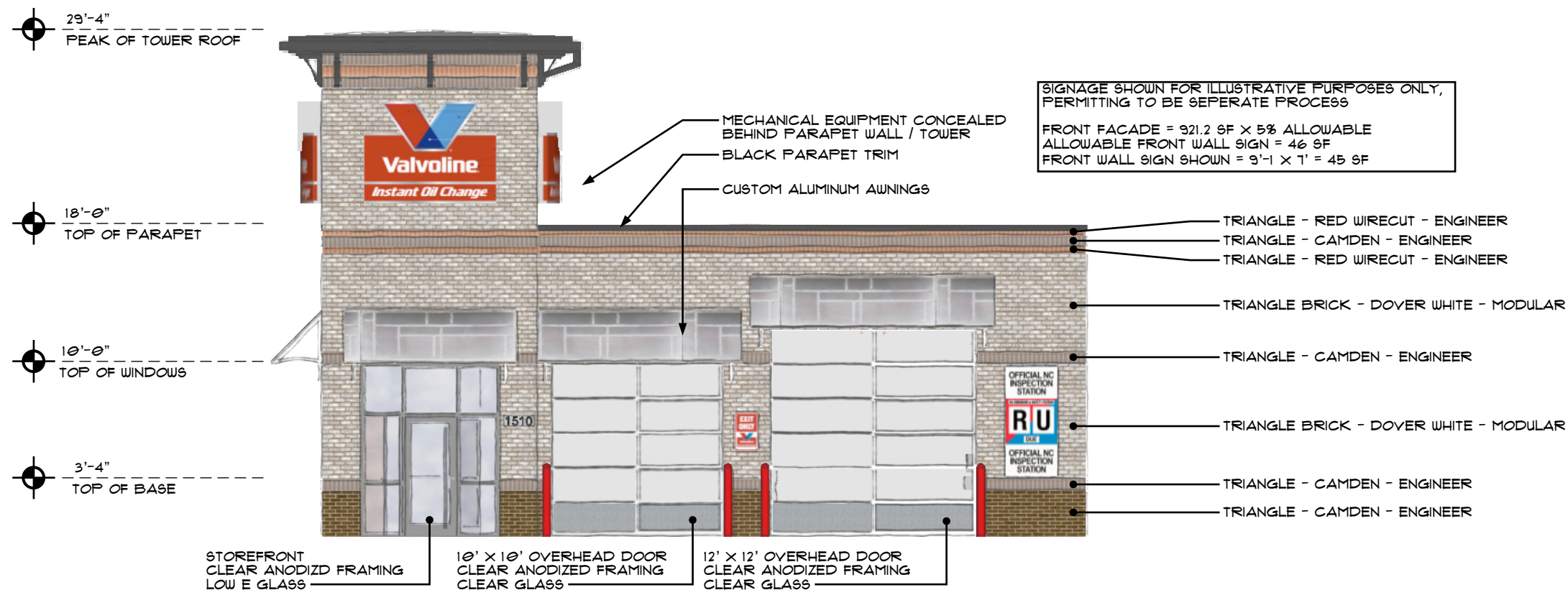


LEFT ELEVATION

SCALE: 1" = 10'-0"



RIGHT ELEVATION



FINISH KEY

VALVOLINE INSTANT OIL AT CHAPEL HILL
1510 E Franklin St.
Chapel Hill, NC

elevations
finishes

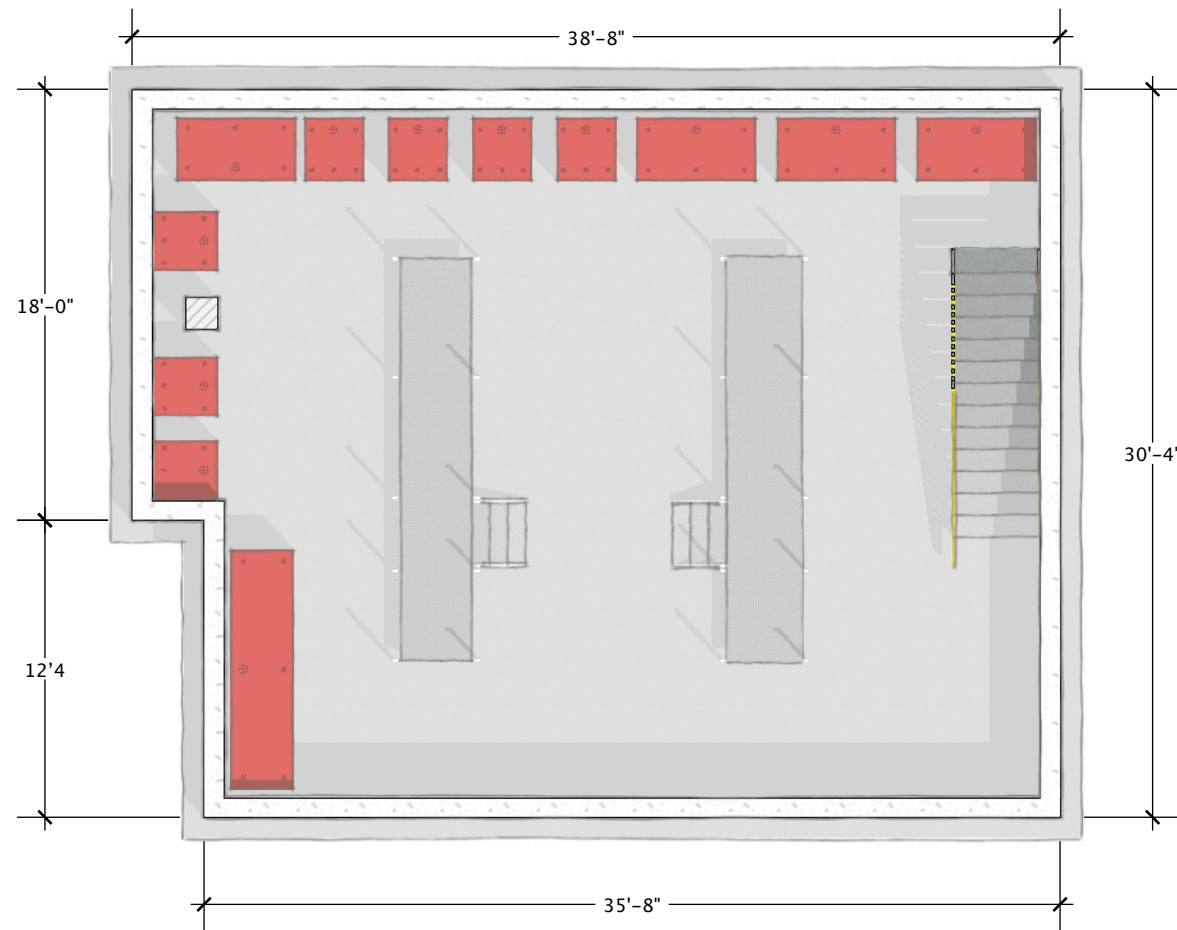


Quality Automotive Services, Inc.
8000 Tower Point Dr
Charlotte, NC 28227
704 226 1900 - office
704 254 7242 - mobile
thelms@ncvloc.com

This drawing is the property of
Quality Automotive and is for the
sole use of the intended recipient
(Owner / Occupant / Subcontractor)
and is not to be shared with any
third party for any purpose without
the express written consent of QAS.

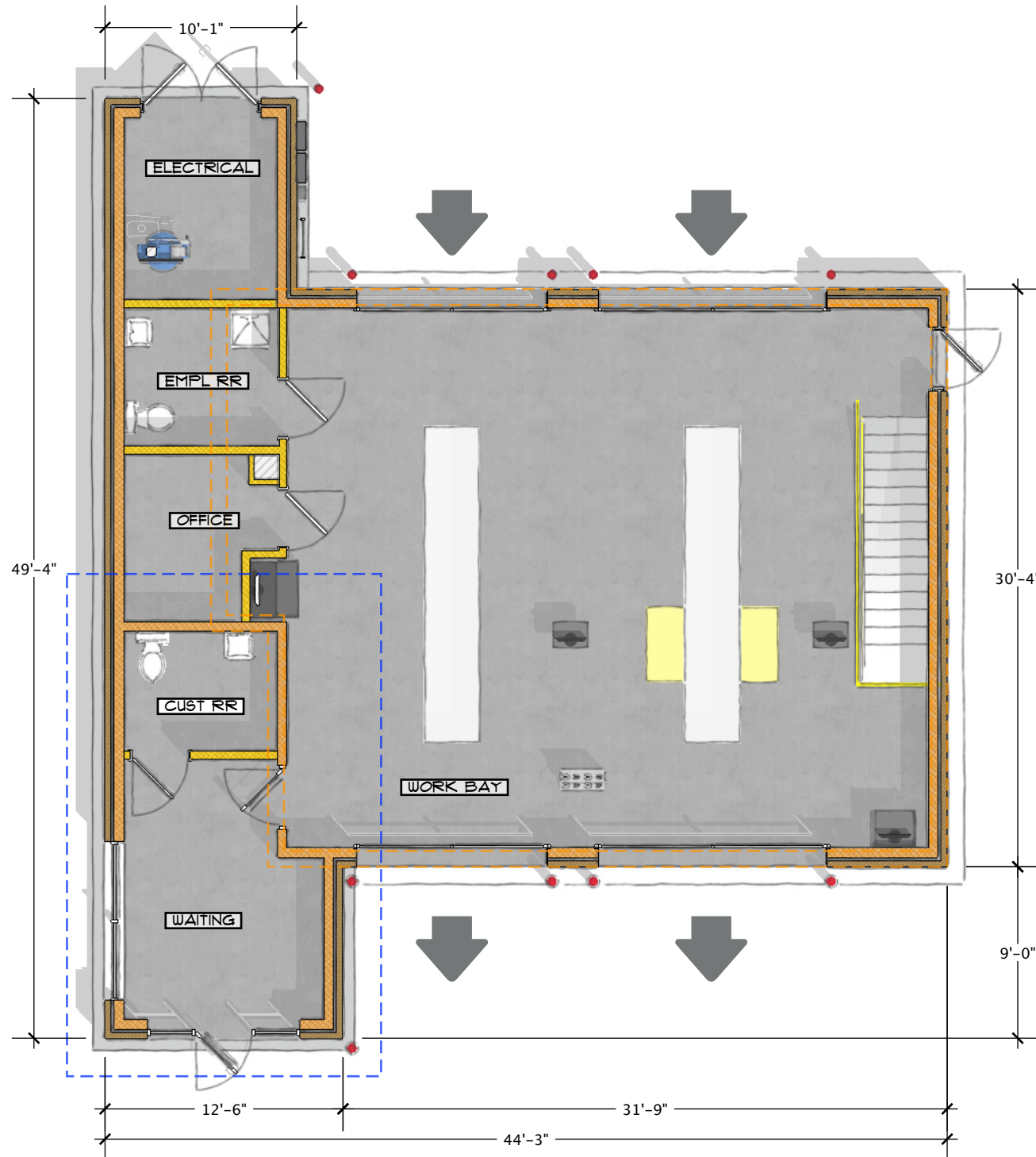
Document Date:
September 9, 2019

November 13, 2019
- sign calculations
- total building height dim



PIT / BASEMENT

SCALE: 1/8" = 1'-0"



FLOORPLAN

SCALE: 1/8" = 1'-0"



VALVOLINE INSTANT OIL AT CHAPEL HILL
1510 E Franklin St.
Chapel Hill, NC

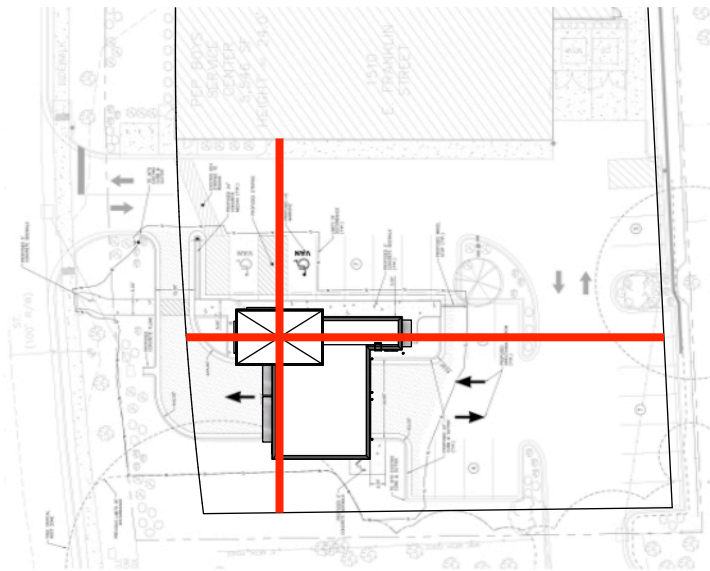
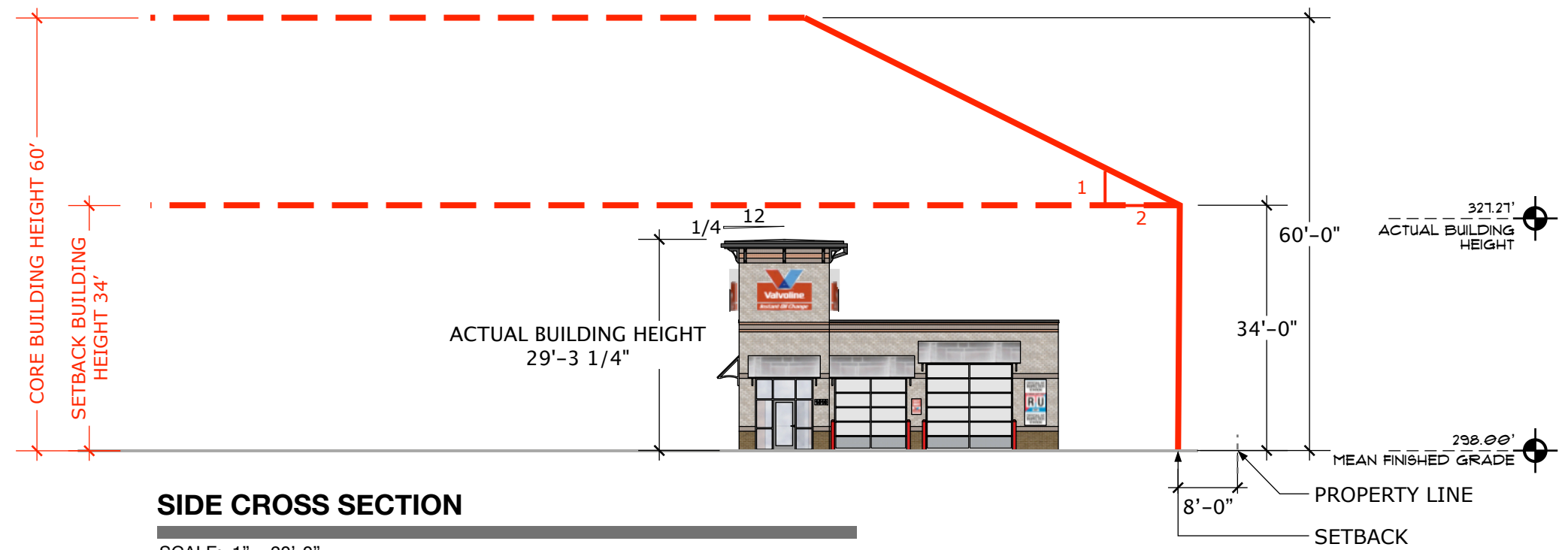
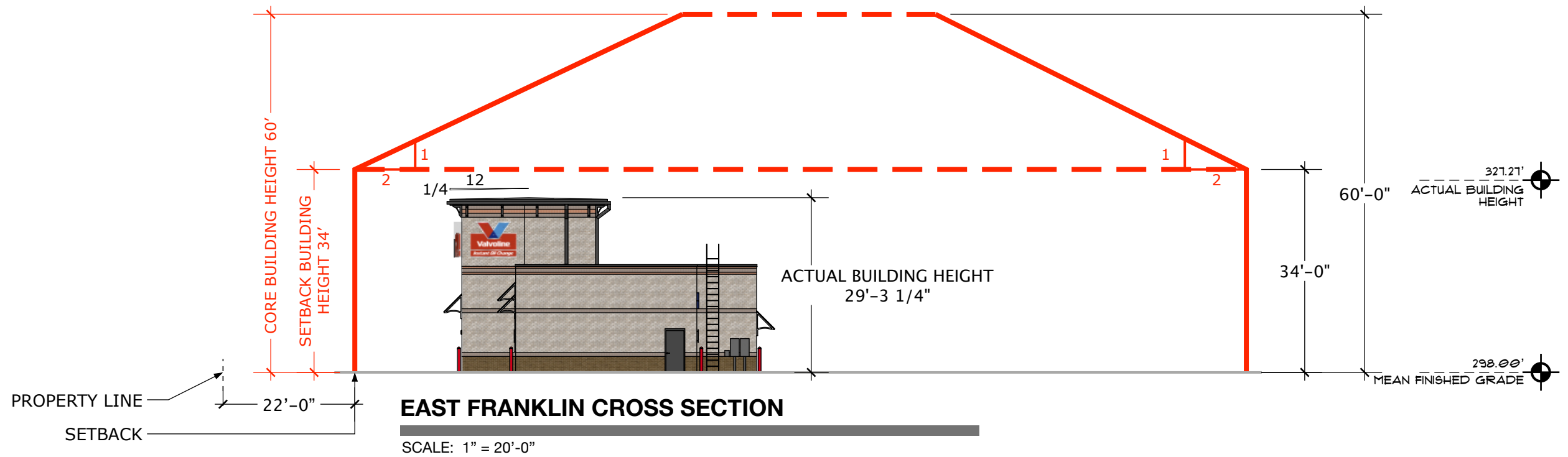
floorplan



Quality Automotive Services, Inc.
8000 Tower Point Dr
Charlotte, NC 28227
704 226 1900 - office
704 254 7242 - mobile
thelms@ncvioc.com

This drawing is the property of
Quality Automotive and is for the
sole use of the intended recipient
(Owner / Occupant / Subcontractor)
and is not to be shared with any
third party for any purpose without
the express written consent of QAS.

Document Date:
September 9, 2019
November 13, 2019
- sign calculations
- total building height dim
December 20, 2019
- add building envelope



VALVOLINE INSTANT OIL AT CHAPEL HILL
1510 E Franklin St.
Chapel Hill, NC

building
envelope