

To: Town Council
 From: Alisa Duffey Rogers, LUMO Project Manager
 Subject: Work Session
 Discuss Prescriptive Nature of the Draft Focus Area Maps & Principles
 Date: November 18, 2019

Central Questions:

1. Should Character Types be mapped in specific locations?

Options:

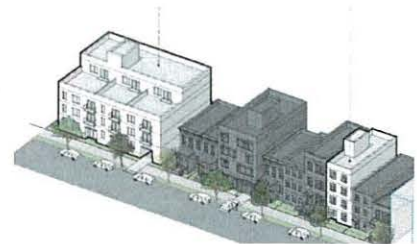
- | | |
|----------------------|--|
| 1. Most Certainty- | Retain existing approach |
| 2. Some Certainty- | Utilize revised Character Types
Map Character Types |
| 3. Some Flexibility- | Break Focus Areas into sub-areas
List & illustrate appropriate Character Types by sub-area
Only map Transitional & Park/Open Space Character Types |
| 4. Most Flexible- | List & illustrate appropriate Character Types for the entire
Focus Area
Don't Map any Character Types |



2. Should Character Type and height be mapped separately?

Options:

1. Retain one map displaying both height and land use
2. Have two maps for each Focus Area – One will display land use; the other will depict land use.



3. Utilize revised nomenclature & descriptions for Character Types or retain existing Character Types?

<u>Revised Character Types</u>		<u>Existing Character Types</u>
<ul style="list-style-type: none"> •Multi-family Residential •Mixed Use •Commercial/Office •Institutional/Civic •Parks & Open space •Light Industrial •Transitional 	OR	<ul style="list-style-type: none"> •Apartments •Multi-family, Shops & Offices •Shops and Offices •Institutional •Parks & Open space •Light Industrial •Townhouses, etc.

