

FLOOR PLAN NOTES	
	ALL INTERIOR WALL PARTITIONS TO BE 'WJ' U.N.O. (SEE SHEET A2.2 FOR ADDITIONAL INFORMATION)
	ALL DOOR FRAMES TO HAVE 5" RETURN ON HINGE SIDE U.N.O.
A-1	EXISTING STRUCTURAL COLUMN.
A-2	POWER DATA FLOOR BOX: REFER TO ELECTRICAL DRAWINGS FOR ADDITIONAL INFORMATION. COORDINATE LOCATIONS WITH STRUCTURAL DRAWINGS.
A-3	NEW REINFORCED CONCRETE SLAB ON GRADE. COORDINATE WITH STRUCTURAL DRAWINGS.
A-4	SOFFIT / BULKHEAD ABOVE: REFER TO REFLECTED CEILING PLANS, SECTIONS, DETAILS AND INTERIOR ELEVATIONS. PROVIDE DEFLECTION TRACK AT UNDERSIDE OF ROOF / FLOOR STRUCTURE ABOVE TO ALLOW BULKHEAD TO REST ON DEMOUNTABLE PARTITION SYSTEM BELOW.
A-5	CARD READER: REFER TO EXTERIOR ELEVATIONS AND ELECTRICAL DRAWINGS FOR ADDITIONAL INFORMATION.
A-6	AUTOMATIC DOOR OPERATOR SYSTEM: REFER TO ELEVATIONS AND DOOR SCHEDULE
A-7	EXISTING METAL CANOPY TO REMAIN AS IS.
A-8	CUSTOM SHOP-FABRICATED BUILT-IN MILLWORK: REFER TO INTERIOR ELEVATIONS- SUBMIT SHOP DRAWINGS AND FINISH SAMPLES TO ARCHITECT FOR APPROVAL
A-9	ADJUSTABLE SHELVES: REFER TO INTERIOR ELEVATIONS- PROVIDE BLOCKING IN WALL AS REQUIRED
A-10	ELECTRICAL PANELS. COORDINATE WITH ELECTRICAL DRAWINGS.
A-11	EQUIPMENT / APPLIANCE: REFER TO EQUIPMENT INSTALLATION MANUAL- COORDINATE WITH EQUIPMENT INSTALLER- PROVIDE ELECTRICAL, DATA AND SECURITY ROUGH-IN WORK AS REQUIRED- FRAME WALL OPENING AND PREPARE FLOOR SUBSTRATE AS REQUIRED. PROVIDE BLOCKING IN WALL AS REQUIRED
A-12	FIRE EXTINGUISHER AND CABINET: PROVIDE THE MINIMUM NUMBER AS REQUIRED AND COORDINATE LOCATIONS WITH CODE REQUIREMENTS AND ADJACENT ACCESSIBILITY CLEARANCES
A-13	KNOX BOX: MOUNTED FLUSH WITH SURROUNDING WALL SURFACE. VERIFY LOCATION WITH LOCAL MUNICIPALITY TO ENSURE COMPLIANCE. PAINT TO BLEND WITH SURROUNDING WALL FINISH.
A-14	CEILING LIGHT FIXTURE COVE- REFER TO REFLECTED CEILING PLAN
A-15	NEW 5/8" TYPE X GYPSUM BOARD PANEL - TAPED & FINISHED OVER EXISTING METAL STUD WALL.
A-16	OVERHEAD GRILLE. REFER TO SHEET A3.2.1
A-17	DEMOUNTABLE PARTITION SYSTEM WITH INTEGRAL DOORS AND POWER, DATA AND SECURITY CONDUIT SYSTEMS, ANCHORED TO BUILDING WALLS, SUBFLOOR, AND BULKHEADS. REFER TO SHEET A5.5.4.
A-18	FLOOR DRAIN: REFER TO PLUMBING DRAWINGS FOR ADDITIONAL INFORMATION.
A-19	MOP SINK: REFER TO PLUMBING DRAWINGS FOR ADDITIONAL INFORMATION.
A-20	EXTEND 24-HOUR VESTIBULE PARTITION AND BULKHEAD FRAME AND FINISH TO UNDERSIDE OF FLOOR STRUCTURE ABOVE.
A-21	SPANDREL GLASS: OPACI-COAT #3-0770 WARM GREY (FOR USE WITH PPG). SEE SPECIFICATIONS.
A-22	EXISTING ROOF DRAIN TO REMAIN AS IS.
A-23	QMI DOOR OVERRIDE SWITCH. SEE ELECTRICAL DRAWINGS FOR ADDITIONAL INFORMATION.
A-24	RECESS FOR DIGITAL DISPLAY; SEE DETAILS ON A5.5.3.
A-25	WATER HEATER ON FLOOR PEDESTAL. REFER TO PLUMBING DRAWINGS FOR ADDITIONAL INFORMATION.
A-26	SUPPORTED CONCRETE STOOP. ACCESSIBILITY-COMPLIANT CONTINUOUS PAVING TO PUBLIC R.O.W. REQD. FROM ALL EXITS. BY LANDLORD RESPONSIBILITY.
A-27	SOUTHEAST LEAF TO BE INACTIVE AND DISABLED.

WALL LEGEND	
	EXISTING WALL CONSTRUCTION TO REMAIN
	EXISTING 1 HR TENANT DEMISING WALL TO REMAIN
	NEW WALL CONSTRUCTION
	NEW 1 HR TENANT DEMISING WALL

**CHASE**  
J.P. MORGAN CHASE  
CAROLINA SQUARE  
133 W FRANKLIN STREET SUITE 160  
CHAPEL HILL, NC 27516  
CHASE OVP# 38100P313014

**CORE STATES**  
GROUP  
201 S. Maple Avenue  
Suite 300  
Ann Arbor, MI 48106  
215.809.2125  
www.core-erg.com

ARCHITECT OF RECORD



THESE DRAWINGS ARE NOT COMPLETE WITHOUT THE SEPARATE TYPE WRITTEN SPECIFICATIONS MANUAL WHICH ARE PART OF THE CONTRACT DOCUMENTS.

ISSUE	DATE	DESCRIPTION
	2018.11.26	PERMIT/ BID SET
1	2018.12.14	BID DESIGN CHANGES

PROJECT INFORMATION	
PROJECT NO:	JPM.25244
DATE:	11/26/2018
PROTOTYPE:	18.3
DRAWN BY:	F.MOLINA
CHECKED BY:	V.ALVAREZ
VERSION:	1.00
SHEET TITLE	

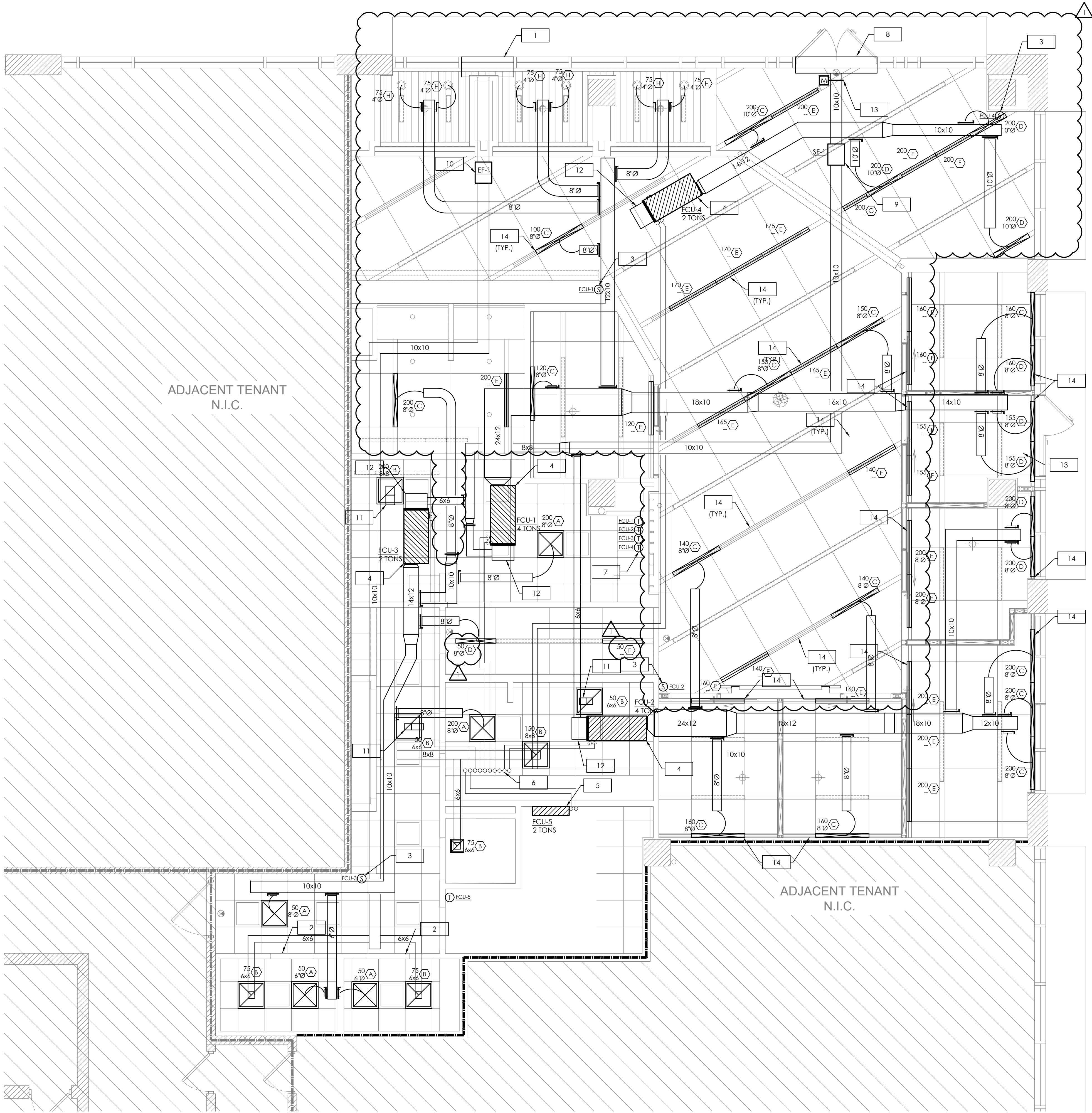
NOTED FLOOR PLAN

SHEET NUMBER

A1.1.1

1 NOTED FLOOR PLAN  
A1.1.1 1/4" = 1'-0"





MECHANICAL NOTES:

1. CONTRACTOR TO CONNECT NEW 10x10 MINIMUM 24 GAUGE GALVANIZED STEEL EXHAUST DUCT TO DISCHARGE AT NEW LOUVER, SIMILAR TO GREENHECK ESD-635X OR EQUAL. CONNECT TO LOUVER WITH INSULATED PLENUM BOX. COORDINATE INSTALLATION WITH EXISTING CONSTRUCTION.
2. PROVIDE 1" DOOR UNDERCUT.
3. CONTRACTOR TO INSTALL STANDARD DAINTREE WIRELESS REMOTE TEMPERATURE SENSOR SERVING FCU-1,2,3,4. MOUNT ON WALL 60" ABOVE FINISHED FLOOR AND COORDINATE EXACT LOCATION WITH ARCHITECT/OWNER. REFER TO HVAC CONTROLS TABLE ON SHEET M2.0 FOR ADDITIONAL INFORMATION.
4. DUCTED FAN COIL UNIT (FCU-1, FCU-2, FCU-3, & FCU-4) LOCATED JUST ABOVE CEILING. SUSPEND UNIT FROM STRUCTURE. PROVIDE DRAIN PAN AND CONDENSATE PUMP. INSTALL UNIT SUCH THAT ALL MAINTENANCE PANELS ARE IN AN ACCESSIBLE LOCATION. MAINTAIN MANUFACTURER'S CLEARANCE REQUIREMENTS. SEE PLUMBING PLANS FOR CONDENSATE ROUTING. VERIFY ADEQUATE CLEARANCE REQUIREMENTS.
5. WALL MOUNTED DUCTLESS FAN COIL UNIT (FCU-5). COORDINATE ACTUAL INSTALLATION LOCATION IN FIELD WITH OWNER. INSTALL CONDENSATE PUMP ON WALL ABOVE DROP CEILING AS CLOSE AS POSSIBLE TO FAN COIL. SEE PLUMBING DRAWINGS FOR CONDENSATE PIPE ROUTING.
6. RUN REFRIGERANT SUCTION AND LIQUID LINES IN PROVIDED RISER LOCATION TO REMOTE ROOF MOUNTED CONDENSING UNITS (CU-1, CU-2, CU-3, CU-4, CU-5). ROUTE LINES ABOVE ROOF AS STRAIGHT AS POSSIBLE. PROVIDE WITH MINIMUM 1" THICK INSULATION. CONTRACTOR TO COORDINATE EXACT REFRIGERANT PIPE ROUTING WITH LANDLORD PRIOR TO COMMENCING WORK.
7. CONTRACTOR TO INSTALL NEW STANDARD DAINTREE 5-WIRE WIF-I COMMUNICATING THERMOSTAT. THERMOSTAT SHALL BE WIRED FOR CONTROL OF FCU-1,2,3,4 WITH REMOTE SENSOR INPUT. MOUNT ON WALL 48" ABOVE FINISHED FLOOR AND COORDINATE EXACT LOCATION WITH ARCHITECT/OWNER. REFER TO HVAC CONTROLS TABLE ON SHEET M2.0 FOR ADDITIONAL INFORMATION.
8. CONTRACTOR TO CONNECT NEW 10x10 OUTSIDE AIR DUCT TO DISCHARGE AT NEW LOUVER. SIMILAR TO GREENHECK ESD-635X OR SIMILAR. CONNECT TO LOUVER WITH INSULATED PLENUM BOX. COORDINATE INSTALLATION WITH EXISTING CONSTRUCTION.
9. PROVIDE AND INSTALL NEW IN-LINE SUPPLY FAN SF-1 IN OUTSIDE AIR DUCTWORK. FIELD VERIFY EXACT LOCATION TO ENSURE NO CONFLICT WITH EQUIPMENT AND ENSURE LOCATION PROVIDES ADEQUATE SPACE FOR SERVICING.
10. PROVIDE AND INSTALL NEW IN-LINE EXHAUST FAN EF-1 IN EXHAUST DUCTWORK. FIELD VERIFY EXACT LOCATION TO ENSURE NO CONFLICT WITH EQUIPMENT AND ENSURE LOCATION PROVIDES ADEQUATE SPACE FOR SERVICING.
11. CONTRACTOR TO PROVIDE AND INSTALL SOUND ATTENUATION RETURN BOOT ON RETURN GRILLE. REFER TO DETAIL ON SHEET M3.0 FOR MORE INFORMATION. DUCT SIZE SHALL MATCH SIZE INDICATION ON DIFFUSER TAG.
12. CONTRACTOR TO PROVIDE AND INSTALL FILTER BOX ON FAN COIL UNIT. EXTEND FULL SIZE RETURN PLENUM AND CONNECT WITH OUTSIDE AIR.
13. PROVIDE MOTORIZED DAMPER SIMILAR TO GREENHECK MODEL VCD-40 WITH BELIMO 1F824-S ACTUATOR. INTERLOCK WITH ASSOCIATED FAN TO OPEN WHEN FAN IS INITIATED. SEE SEQUENCE OF OPERATION ON SHEET M2.0 FOR ADDITIONAL INFORMATION.
14. CONTRACTOR TO PROVIDE AND INSTALL FULL-LENGTH LINEAR SLOT DIFFUSER. PROVIDE PLENUM BOX FOR ACTIVE SECTIONS SHOWN ON PLANS. INSTALL BLANK-OFF PLATES ON ALL UNUSED SECTIONS OF LINEAR SLOT DIFFUSER.

CHASE

J.P. MORGAN CHASE  
CAROLINA SQUARE  
133 W FRANKLIN STREET SUITE 160  
CHAPEL HILL, NC 27516  
CHASE OVP# 38100P313014

CORE STATES

GROUP  
CORE STATES, INC.

1700 Industrial Drive  
Suite B  
Rogers, AR 72756  
479.984.4400  
www.core-eng.com

ENGINEER OF RECORD



THESE DRAWINGS ARE NOT COMPLETE WITHOUT THE SEPARATE TYPE WRITTEN SPECIFICATIONS MANUAL WHICH ARE PART OF THE CONTRACT DOCUMENTS.

ISSUE	DATE	DESCRIPTION
	2018.11.26	PERMIT/ BID SET
1	2018.12.14	BID DESIGN CHANGES

PROJECT INFORMATION

PROJECT NO:	JPM.25244
DATE:	11/26/2018
PROTOTYPE:	18.3
DRAWN BY:	M. LAFFERTY
CHECKED BY:	S. VAZ
VERSION:	1.00

SHEET TITLE

MECHANICAL  
FLOOR PLAN

SHEET NUMBER

M1.0

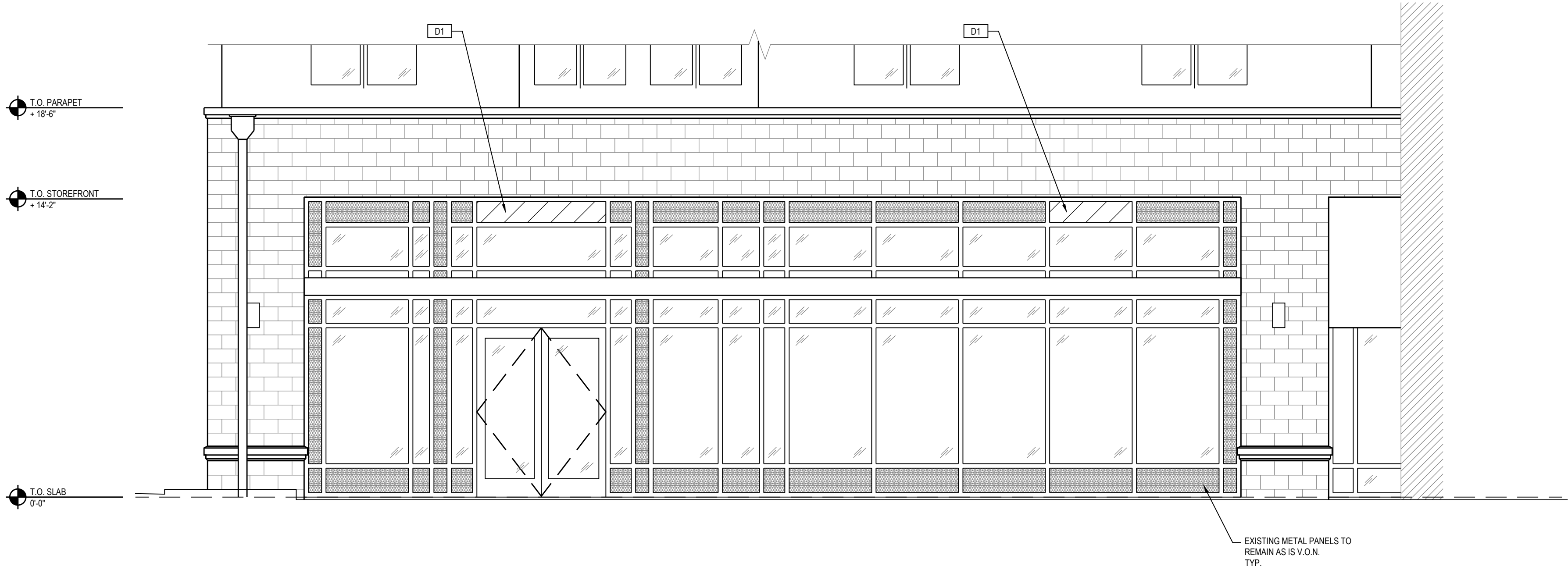
MECHANICAL FLOOR PLAN

SCALE  
1/4"=1'-0"

1



DEMO KEYNOTES	
D1	EXISTING METAL PANEL TO BE REMOVED. PREPARE OPENING FOR NEW LOUVER. STOREFRONT FRAMING TO REMAIN AS IS.



2  
D.1 NORTH ELEVATION (EXISTING)  
1/4" = 1'-0"



1  
D.1 EAST ELEVATION (EXSTING TO REMAIN AS IS)  
1/4" = 1'-0"

**CHASE**  
J.P. MORGAN CHASE  
CAROLINA SQUARE  
133 W FRANKLIN STREET SUITE 160  
CHAPEL HILL, NC 27516  
CHASE OVP# 38100P313014

**CORE STATES**  
GROUP  
CORESTATES, INC.  
201 S. Maple Avenue  
Suite 300  
Arling, PA 19002  
215.809.2125  
www.core-erg.com

ARCHITECT OF RECORD



THESE DRAWINGS ARE NOT COMPLETE WITHOUT THE SEPARATE TYPE WRITTEN SPECIFICATIONS MANUAL WHICH ARE PART OF THE CONTRACT DOCUMENTS.

ISSUE	DATE	DESCRIPTION

PROJECT INFORMATION	
PROJECT NO:	JPM.25244
DATE:	12/27/2018
PROTOTYPE:	18.3
DRAWN BY:	A. KLINKE
CHECKED BY:	V. ALVAREZ
VERSION:	1.00

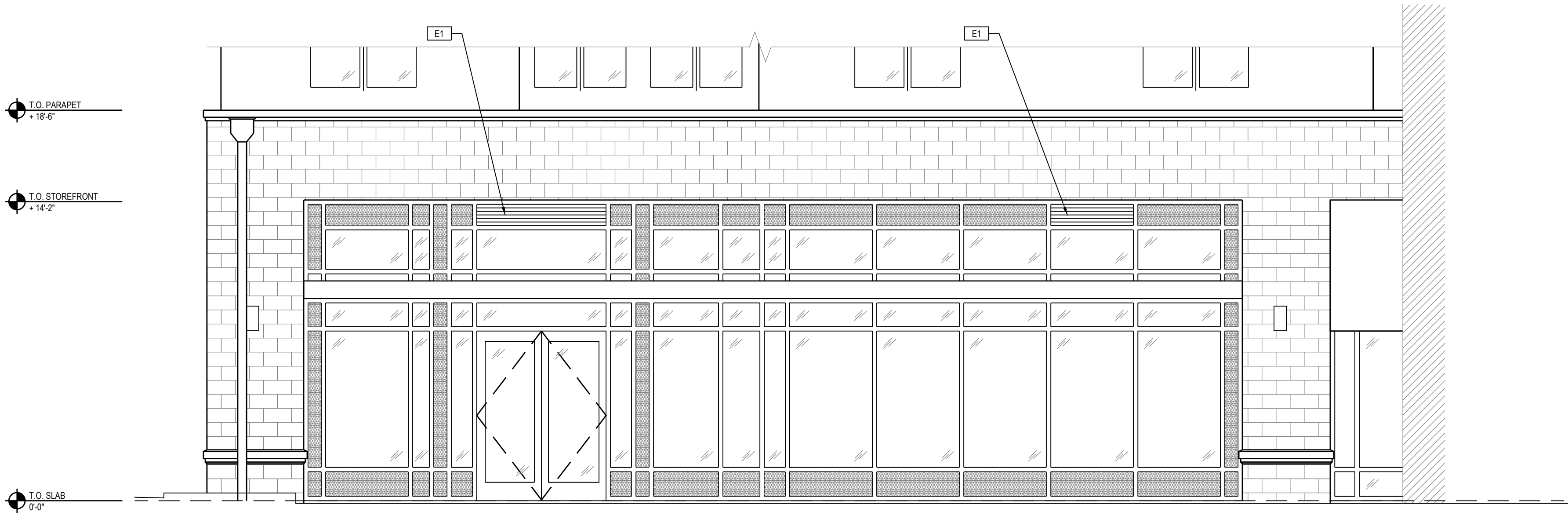
SHEET TITLE

EXISTING  
ELEVATIONS

SHEET NUMBER

D.1

DEMO KEYNOTES	
E1	NEW LOUVER, SIMILAR TO GREENHECK ESD-635X OR EQUAL. REFER TO MECHANICAL DRAWINGS



1 NORTH ELEVATION (PROPOSED)  
A.2 1/4" = 1'-0"

**CHASE**  
J.P. MORGAN CHASE  
CAROLINA SQUARE  
133 W FRANKLIN STREET SUITE 160  
CHAPEL HILL, NC 27516  
CHASE OVP# 38100P313014

**CORE STATES**  
GROUP  
201 S. Maple Avenue  
Suite 300  
Arling, PA 19002  
215.809.2125  
www.core-eng.com

ARCHITECT OF RECORD



THESE DRAWINGS ARE NOT COMPLETE WITHOUT THE SEPARATE TYPE WRITTEN SPECIFICATIONS MANUAL WHICH ARE PART OF THE CONTRACT DOCUMENTS.

ISSUE	DATE	DESCRIPTION

PROJECT INFORMATION	
PROJECT NO:	JPM.25244
DATE:	12/27/2018
PROTOTYPE:	18.3
DRAWN BY:	A. KLINKE
CHECKED BY:	V. ALVAREZ
VERSION:	1.00

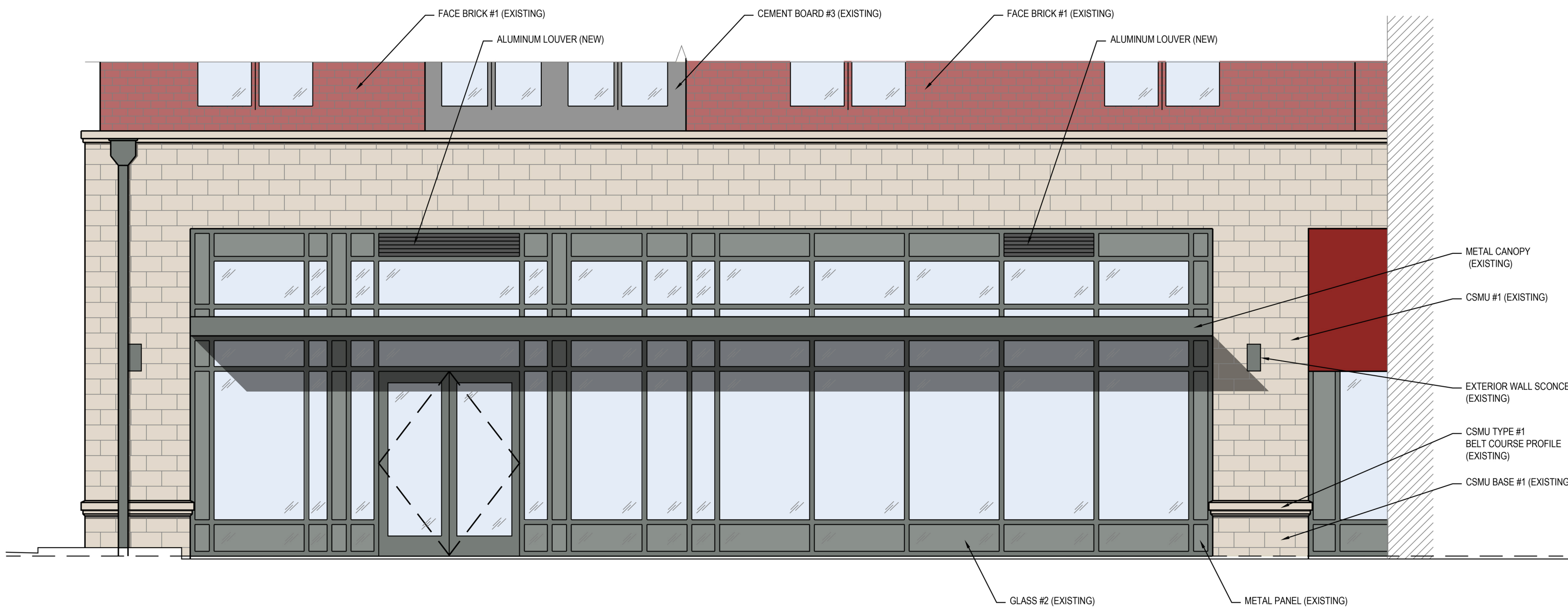
SHEET TITLE

PROPOSED  
ELEVATIONS

SHEET NUMBER

A.2





FACE BRICK #1  
LEE #60 PINEHURST  
MORTAR: COOSA FROSTY

CSMU #1  
SANDCASTLE  
MORTAR: COOSA  
ANTIQUE BUFF

CEMENT BRD PAINT #3  
BM 979 STAMPEDE

GLASS #2  
PAINTED ALUMINUM WINDOW  
WALL WITH PPG SOLARBAN 72  
CLEAR GLASS

ALUMINUM LOUVER GREENHECK  
ESD-635X OR EQUAL

- NOTE:
1. MATERIALS SPECIFIED FOR AVAILABILITY OR APPROVED EQUAL
  2. REFER TO MATERIAL MANUFACTURER SAMPLER FOR ACTUAL TEXTURE AND FINISH

1 NORTH ELEVATION (PROPOSED)  
A2.1 1/4" = 1'-0"




CHASE

J.P. MORGAN CHASE

CAROLINA SQUARE

133 W FRANKLIN STREET SUITE 160  
CHAPEL HILL, NC 27516  
CHASE OVP# 38100P313014



CORE STATES

GROUP

CORESTATES, INC.

201 S. Maple Avenue  
Suite 300  
Amble, PA 19002  
215.809.2125  
www.core-eng.com

ARCHITECT OF RECORD

THESE DRAWINGS ARE NOT COMPLETE WITHOUT THE SEPARATE TYPE WRITTEN SPECIFICATIONS MANUAL WHICH ARE PART OF THE CONTRACT DOCUMENTS.

ISSUE	DATE	DESCRIPTION

PROJECT INFORMATION	
PROJECT NO:	JPM.25244
DATE:	12/27/2018
PROTOTYPE:	18.3
DRAWN BY:	A. KLINKE
CHECKED BY:	V. ALVAREZ
VERSION:	1.00

SHEET TITLE

PROPOSED  
COLORED  
ELEVATIONS

SHEET NUMBER

A2.1