

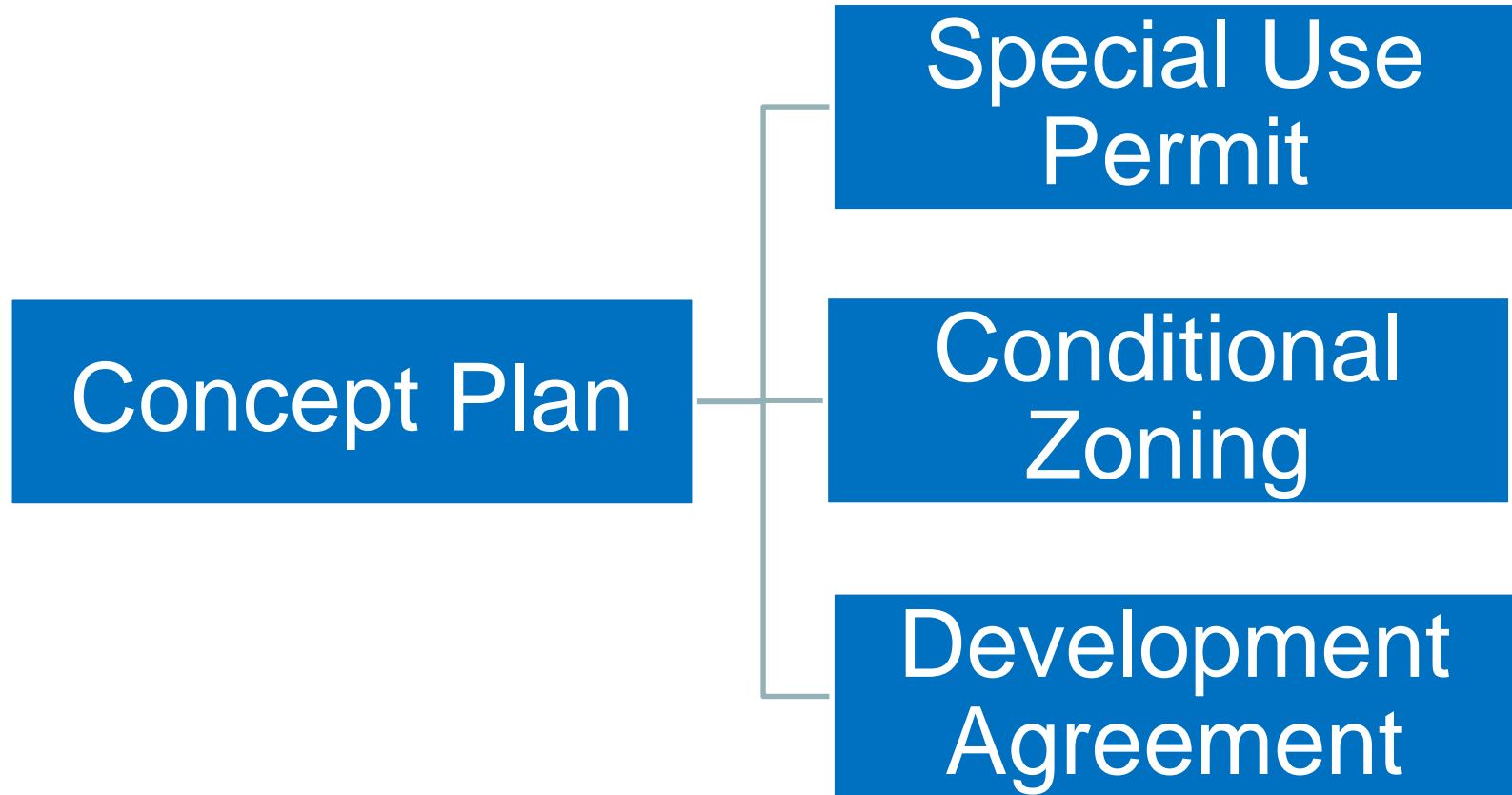


# Habitat/Carol Woods Community Concept Plan

Housing Advisory Board

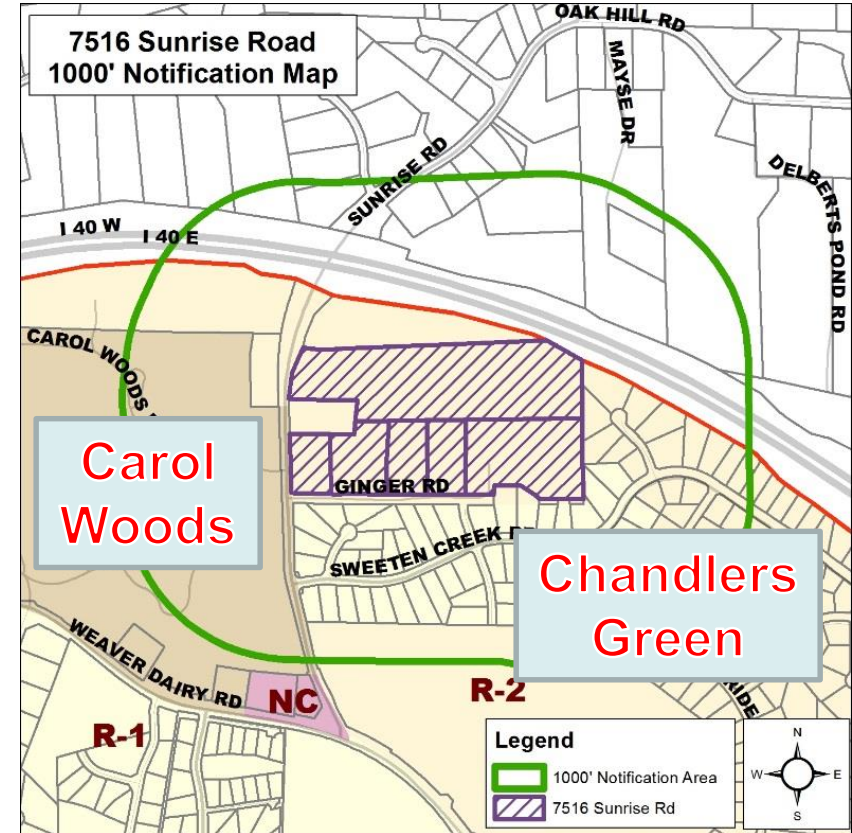
November 13, 2018



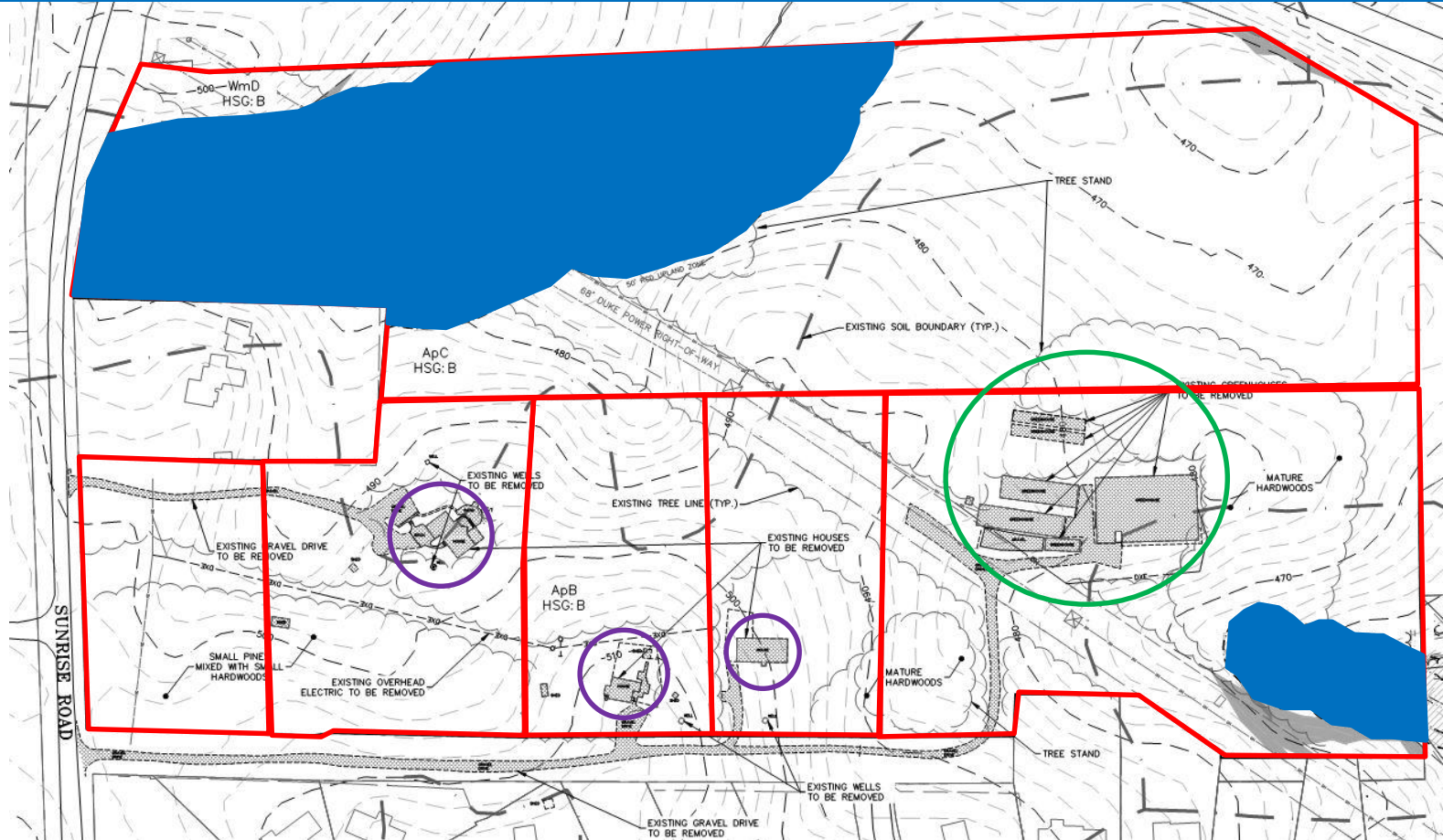


# Habitat/Carol Woods – Project Summary

- 223 multifamily dwelling units
- 95 affordable units (42%)
- 33.8 acre site



# Habitat/Carol Woods – Existing Conditions





ID	# Units	Description	Unit Type	Enrollment	Grass freelance Area	Unit Cost	# of Floors	Carroll Amount	Initial	Notes
001	14	001	001	001	001	001	1	001		
002	14	002	002	002	002	002	1	002		
003	14	003	003	003	003	003	1	003		
004	14	004	004	004	004	004	1	004		
005	14	005	005	005	005	005	1	005		
006	14	006	006	006	006	006	1	006		
007	14	007	007	007	007	007	1	007		
008	14	008	008	008	008	008	1	008		
009	14	009	009	009	009	009	1	009		
010	14	010	010	010	010	010	1	010		
011	14	011	011	011	011	011	1	011		
012	14	012	012	012	012	012	1	012		
013	14	013	013	013	013	013	1	013		
014	14	014	014	014	014	014	1	014		
015	14	015	015	015	015	015	1	015		
016	14	016	016	016	016	016	1	016		
017	14	017	017	017	017	017	1	017		
018	14	018	018	018	018	018	1	018		
019	14	019	019	019	019	019	1	019		
020	14	020	020	020	020	020	1	020		
021	14	021	021	021	021	021	1	021		
022	14	022	022	022	022	022	1	022		
023	14	023	023	023	023	023	1	023		
024	14	024	024	024	024	024	1	024		
025	14	025	025	025	025	025	1	025		
026	14	026	026	026	026	026	1	026		
027	14	027	027	027	027	027	1	027		
028	14	028	028	028	028	028	1	028		
029	14	029	029	029	029	029	1	029		
030	14	030	030	030	030	030	1	030		
031	14	031	031	031	031	031	1	031		
032	14	032	032	032	032	032	1	032		
033	14	033	033	033	033	033	1	033		
034	14	034	034	034	034	034	1	034		
035	14	035	035	035	035	035	1	035		
036	14	036	036	036	036	036	1	036		
037	14	037	037	037	037	037	1	037		
038	14	038	038	038	038	038	1	038		
039	14	039	039	039	039	039	1	039		
040	14	040	040	040	040	040	1	040		
041	14	041	041	041	041	041	1	041		
042	14	042	042	042	042	042	1	042		
043	14	043	043	043	043	043	1	043		
044	14	044	044	044	044	044	1	044		
045	14	045	045	045	045	045	1	045		
046	14	046	046	046	046	046	1	046		
047	14	047	047	047	047	047	1	047		
048	14	048	048	048	048	048	1	048		
049</										



## HAB Charge

- Assist the Town Council in promoting and developing a full spectrum of housing opportunities that meet the needs of the Chapel Hill community.

# General Guiding Questions

- How well does this application advance the Town's housing goals?
- What feedback would you like the applicant and Council to consider?
- Factors to consider:
  - Target population to be served
  - Size of the units
  - Density level
  - Bedroom mix
  - Placement of affordable units