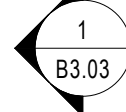
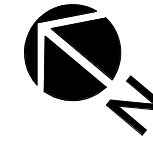

$$1/16'' = 1'-0''$$

2


$$1/16'' = 1'-0''$$

PLAN

1/16" = 1'-0"



© 2015 JDAVIS ARCHITECT'S EXPRESSLY RESERVES ITS COMMON LAW COPYRIGHT AND OTHER PROPERTY RIGHTS IN THESE PLANS. THESE PLANS ARE NOT TO BE REPRODUCED, CHANGED OR COPIED IN ANY FORM OR MANNER WHATSOEVER, NOR ARE THEY TO BE ASSIGNED TO ANY THIRD PARTY WITHOUT FIRST OBTAINING THE EXPRESSED WRITTEN PERMISSION AND CONSENT OF JDAVIS ARCHITECTS, PLLC.

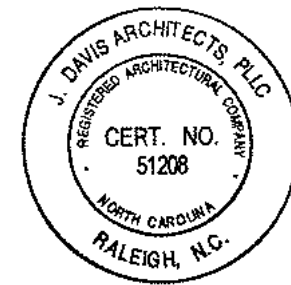
Author

Checker

FIRST & SECOND FLOOR PLANS

B2.01

FOR
REVIEW
ONLY



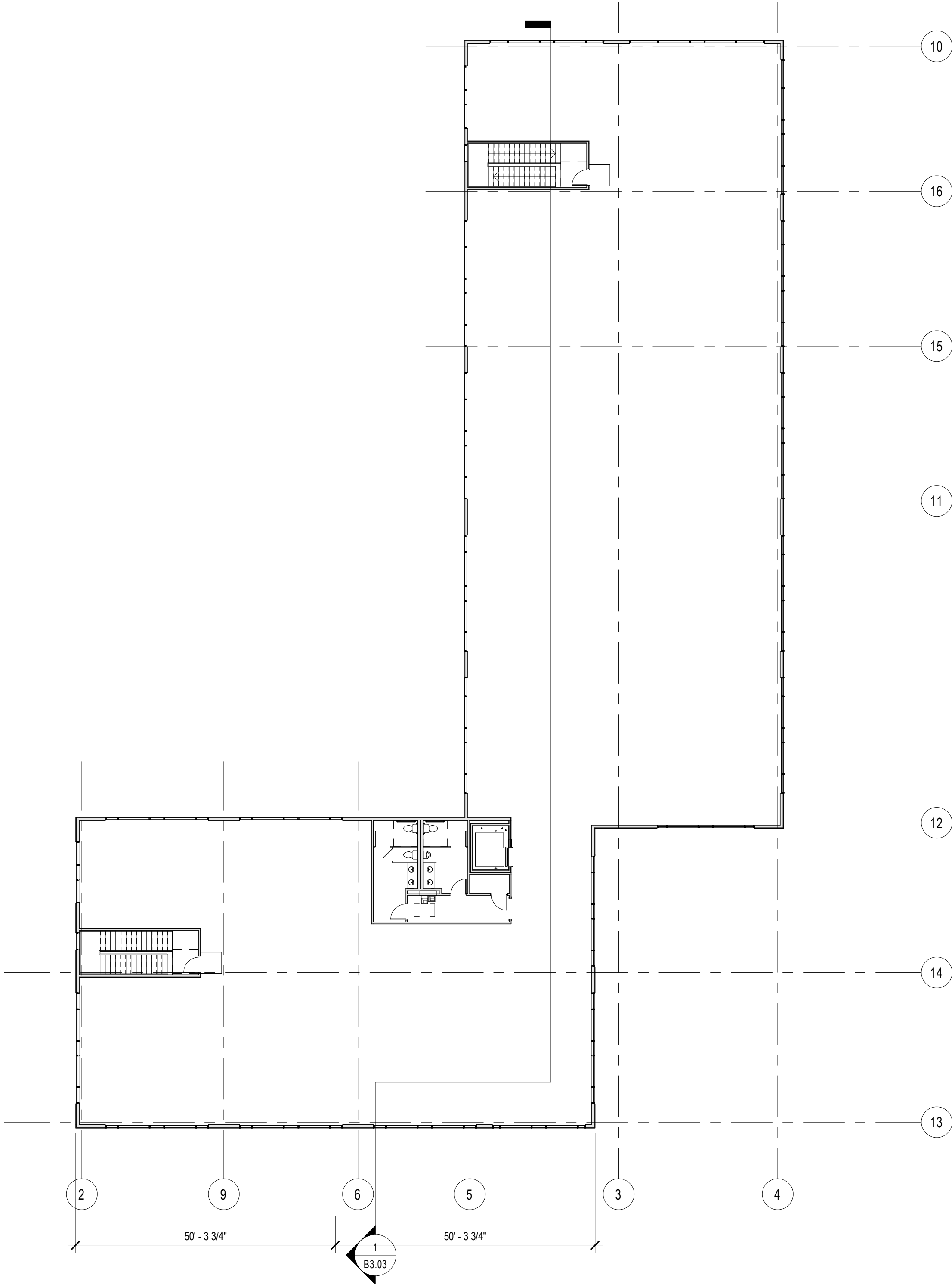
Tarheel Lodging, LLC & Unicorn Group Fifteen, LLC

Tarheel Lodging Redevelopment

Chapel Hill

J DAVIS & ASSOCIATES

510 South Wilmington St. | Raleigh, NC 27601 | tel 919.835.1500
1518 Walnut St., Suite 1308 | Philadelphia, PA 19102 | tel 215.545.0121



THIRD FLOOR PLAN

1

1/16" = 1'-0"

© 2015 J.DAVIS ARCHITECTS EXPRESSLY RESERVES ITS COMMON LAW COPYRIGHT AND OTHER PROPERTY RIGHTS IN THESE PLANS. THESE PLANS ARE NOT TO BE REPRODUCED, CHANGED OR COPIED IN ANY FORM OR MANNER WHATSOEVER, NOR ARE THEY TO BE ASSIGNED TO ANY THIRD PARTY WITHOUT FIRST OBTAINING THE EXPRESSED WRITTEN PERMISSION AND CONSENT OF J.DAVIS ARCHITECTS, PLLC.

Tarheel Lodging, LLC & Unicorn Group Fifteen, LLC
Tarheel Lodging Redevelopment
Chapel Hill

FOR
REVIEW
ONLY



PROJECT:		18030	DATE
ISSUE:		CDC SET	07.20.2018
REVISIONS:			
DRAWN BY:		Author	
CHECKED BY:		Checker	
CONTENT:		THIRD FLOOR PLAN	

B2.02



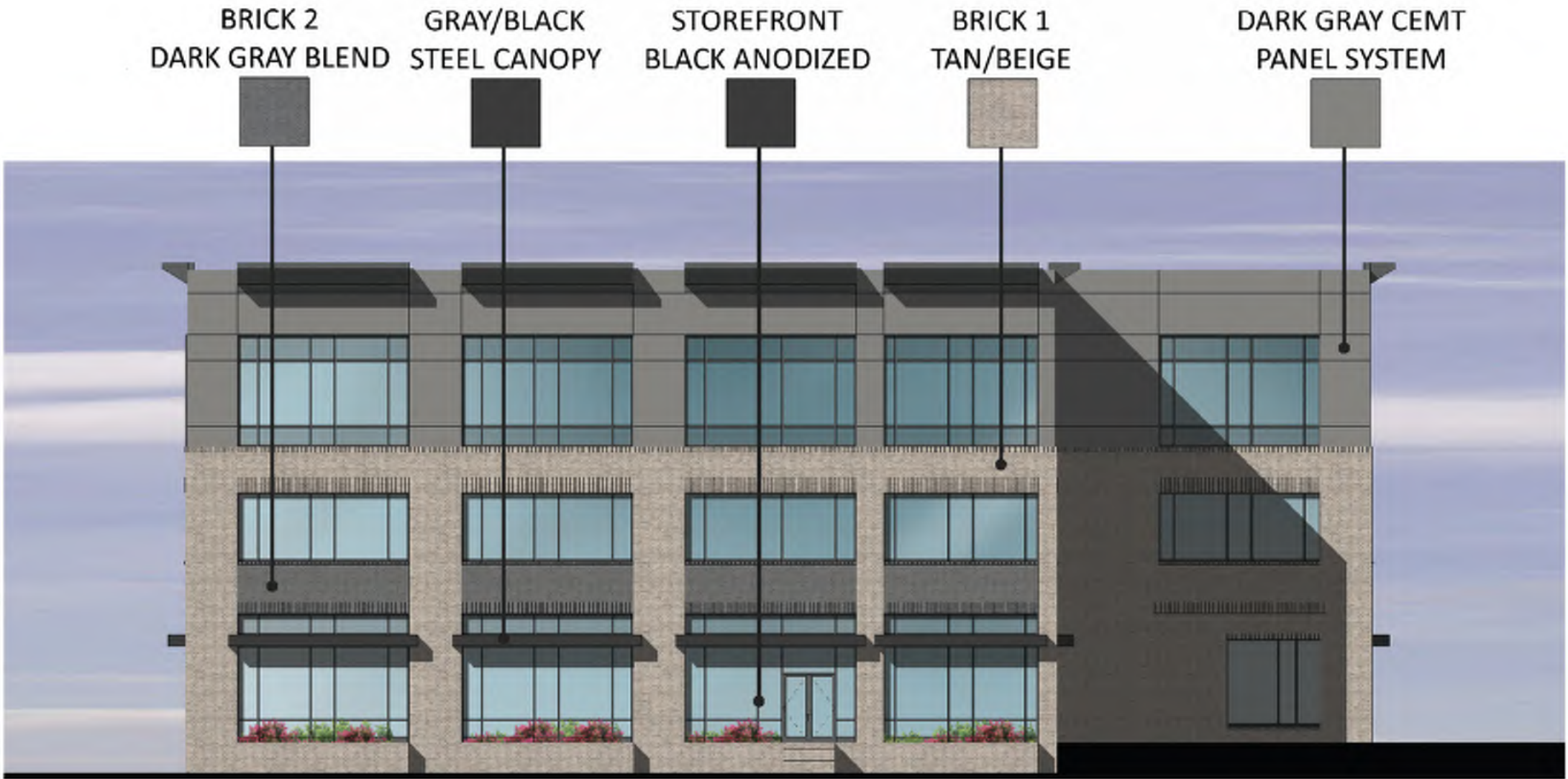
510 South Waverly St. | Raleigh, NC 27601 | Tel 919.835.1500
1518 Walnut St. Suite 1308 | Philadelphia, PA 19102 | Tel 215.546.0121



GLAZING	42.29%
CEMENTITIOUS SIDING	0%
CEMENTITIOUS PANEL	22.50%
BRICK	44.51%

BUILDING 2 ELEVATIONS - STREET 1

2



GLAZING	46.15%
CEMENTITIOUS SIDING	0.00%
CEMENTITIOUS PANEL	21.12%
BRICK	31.22%

BUILDING 2 ELEVATIONS - NOVUS LANE

1

© 2015 J.DAVIS ARCHITECTS EXPRESSLY RESERVES ITS COMMON LAW COPYRIGHT AND OTHER PROPERTY RIGHTS IN THESE PLANS. THESE PLANS ARE NOT TO BE REPRODUCED, CHANGED OR COPIED IN ANY FORM OR MANNER WHATSOEVER, NOR ARE THEY TO BE ASSIGNED TO ANY THIRD PARTY WITHOUT FIRST OBTAINING THE EXPRESSED WRITTEN PERMISSION AND CONSENT OF J.DAVIS ARCHITECTS, PLLC.

Tarheel Lodging, LLC & Unicorn Group Fifteen, LLC
Tarheel Lodging Redevelopment
Chapel Hill

FOR
REVIEW
ONLY



DATE

PROJECT:	18030	
ISSUE:	CDC SET	07.20.2018

REVISIONS:

DRAWN BY:

CHECKED BY:

CONTENT:

EXTERIOR ELEVATIONS

B3.01

J.DAVIS

510 South Wilmington St. | Raleigh, NC 27601 | tel 919.835.1500
1518 Walnut St. Suite 1308 | Philadelphia, PA 19102 | tel 215.546.0121

7/19/2018 4:55:03 PM P:\18030\18030_Tarheel_Lodging_Redevelopment\4a_ARCHITECTURE\Revit\18030_Tarheel Lodging Office Bldg.rvt



BUILDING 2 ELEVATION - NW PARKING ELEVATION

1/16" = 1'-0"

4



BUILDING 2 ELEVATION - NOVUS LANE

1/16" = 1'-0"

3



BUILDING 2 ELEVATION - NE PARKING ELEVATION

1/16" = 1'-0"

2



BUILDING 2 ELEVATION - STREET 1

1/16" = 1'-0"

1

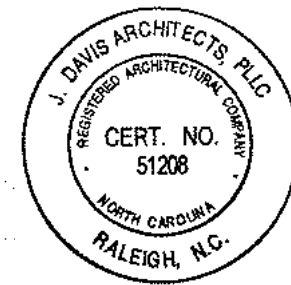
© 2015 J.DAVIS ARCHITECTS EXPRESSLY RESERVES ITS COMMON LAW COPYRIGHT AND OTHER PROPERTY RIGHTS IN THESE PLANS. THESE PLANS ARE NOT TO BE REPRODUCED, CHANGED OR COPIED IN ANY FORM OR MANNER WHATSOEVER, NOR ARE THEY TO BE ASSIGNED TO ANY THIRD PARTY WITHOUT FIRST OBTAINING THE EXPRESSED WRITTEN PERMISSION AND CONSENT OF J.DAVIS ARCHITECTS, PLLC.

Tarheel Lodging, LLC & Unicorn Group Fifteen, LLC

Tarheel Lodging Redevelopment

Chapel Hill

FOR
REVIEW
ONLY



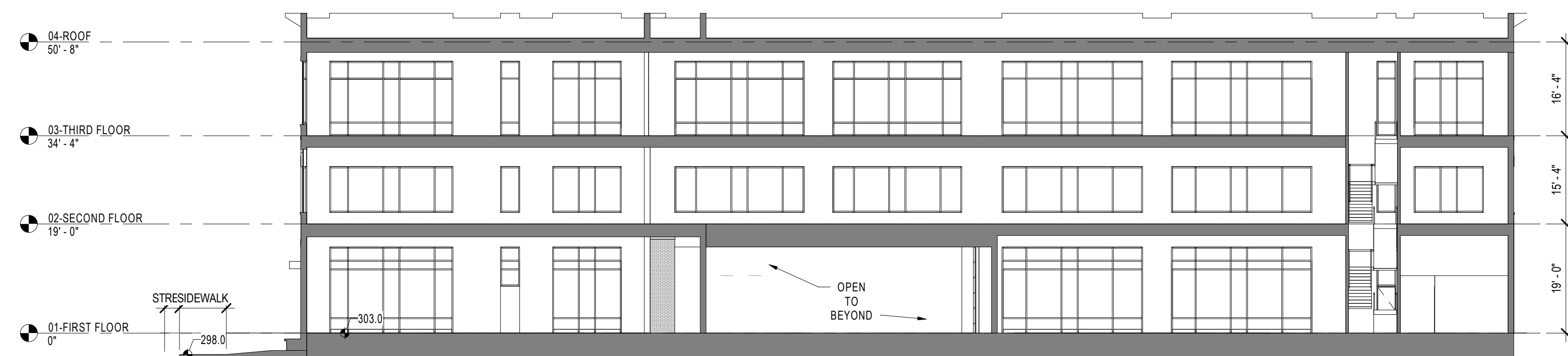
PROJECT:		18030	DATE
ISSUE:		CDC SET	07.20.2018
REVISIONS:			
DRAWN BY:		Author	
CHECKED BY:		Checker	
CONTENT:		EXTERIOR ELEVATIONS	

B3.02

JDAVIS>

510 South Winterset St. | Raleigh, NC 27601 | Tel: 919.835.1500

1518 Walnut St. Suite 1308 | Philadelphia, PA 19102 | Tel: 215.546.0121

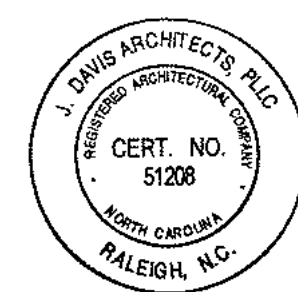


BUILDING SECTION

$$1/16'' = 1'-0''$$

1

FOR
REVIEW
ONLY



DATE _____

PROJECT:	18030	
ISSUE:	CDC SET	07.20.2018
REVISIONS:		
DRAWN BY:	Author	
CHECKED BY:	Checker	
CONTENT:		
	BUILDING SECTION	

B3.03

Tarheel Lodging, LLC & Unicorn Group Fifteen, LLC

Tarheel Lodging Redevelopment

Chapel Hill

JDAVIS &

510 South Wilmington St. | Raleigh, NC 27601 | tel 919.835.1500
1518 Walnut St., Suite 1308 | Philadelphia, PA 19102 | tel 215.545.0121

