

An Introduction to the Durham-Orange Light Rail Project



Council Work Session

Presentation by

Bergen Watterson, Transportation Planning Manager

Ben Hitchings, Planning & Development Services Director

(September 12, 2018)



TOWN OF CHAPEL HILL

Meeting Agenda

1) System Development

- Presentation
- Discussion

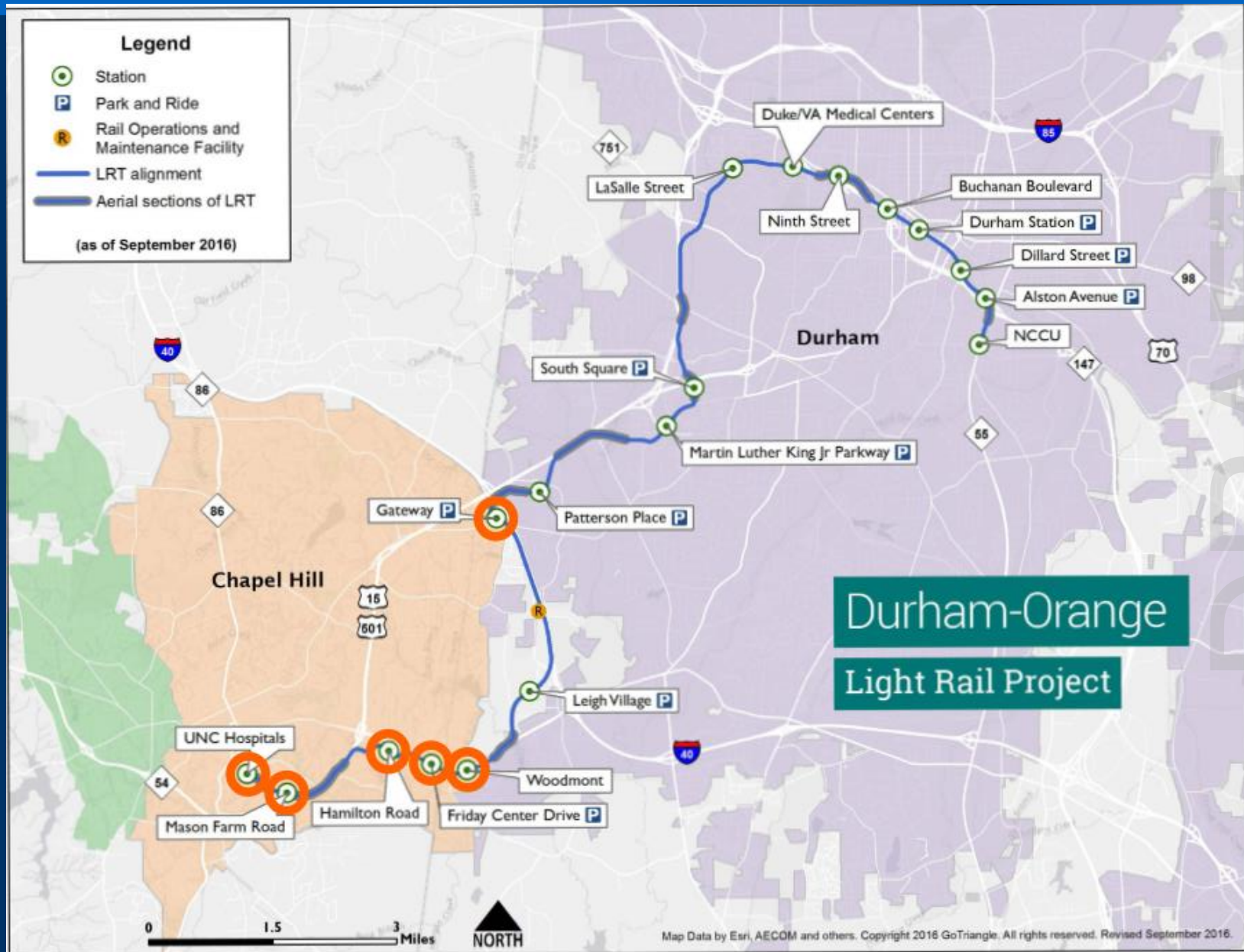
2) Station Area Planning

- Presentation
- Discussion

DRAFT

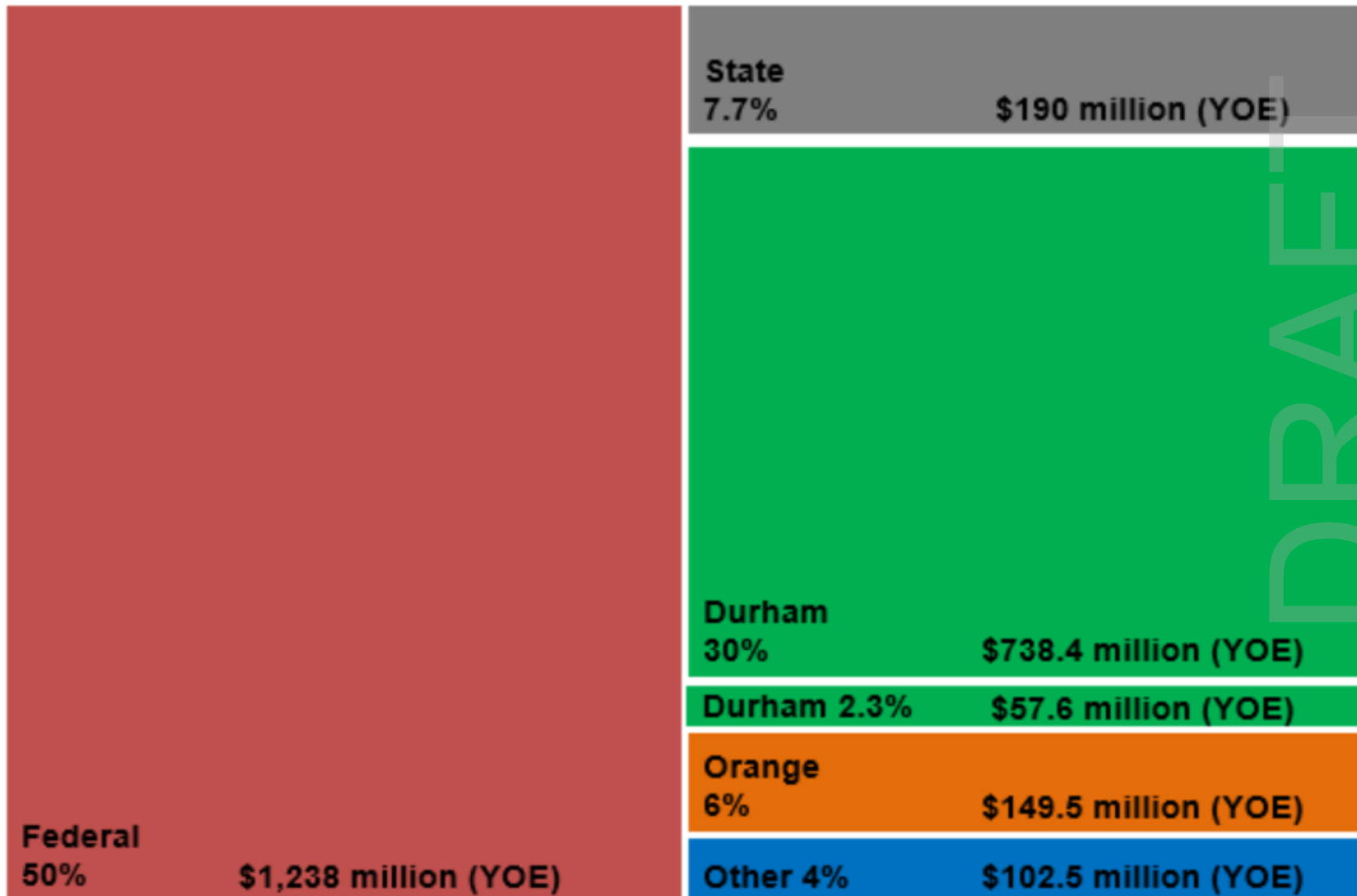


System Overview



Funding Plan

D-O LRT Project: \$190 million cap funding plan / updated



Timeline

Durham-Orange Light Rail Transit Project Timeline

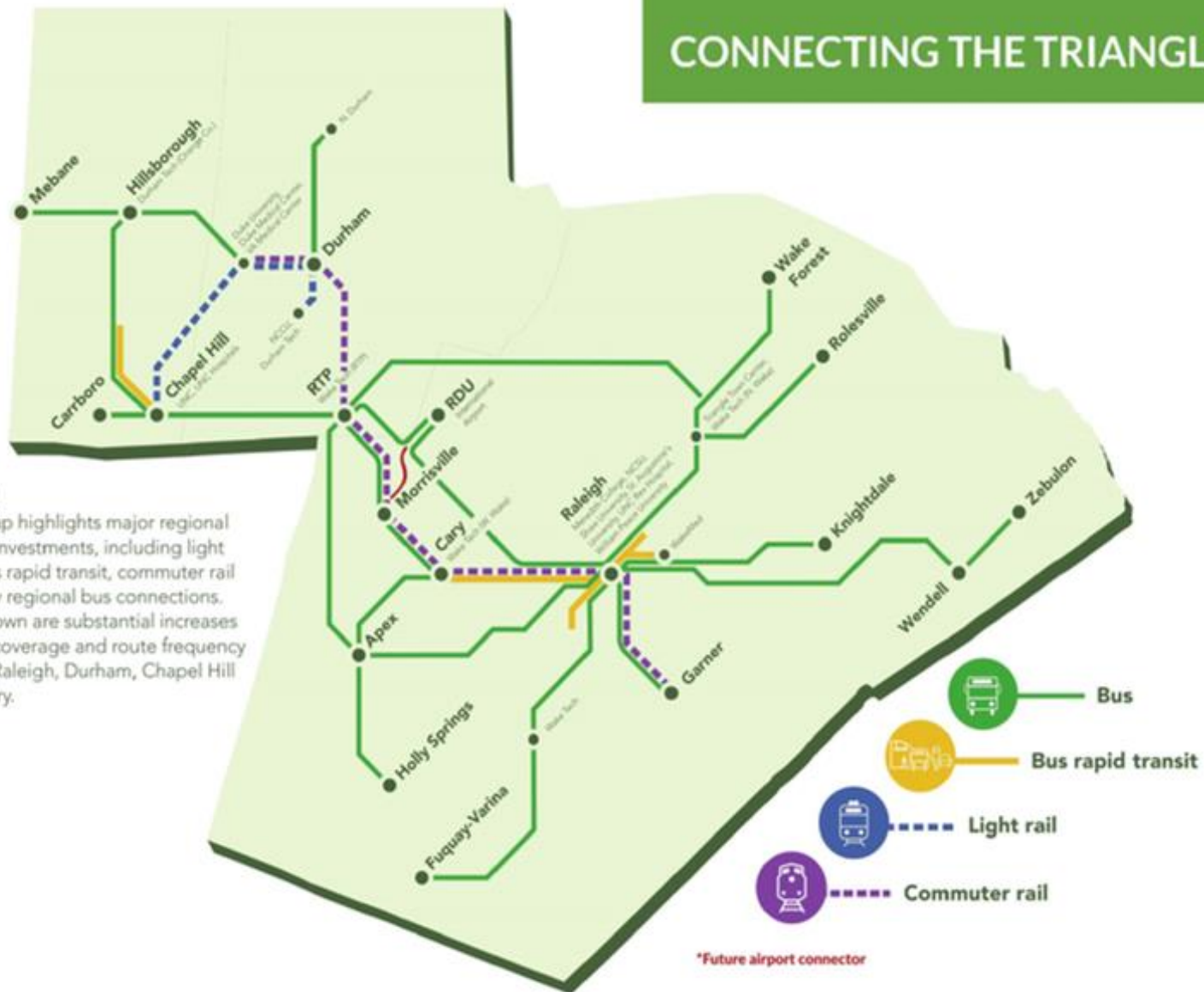


Part of a Regional System

CONNECTING THE TRIANGLE

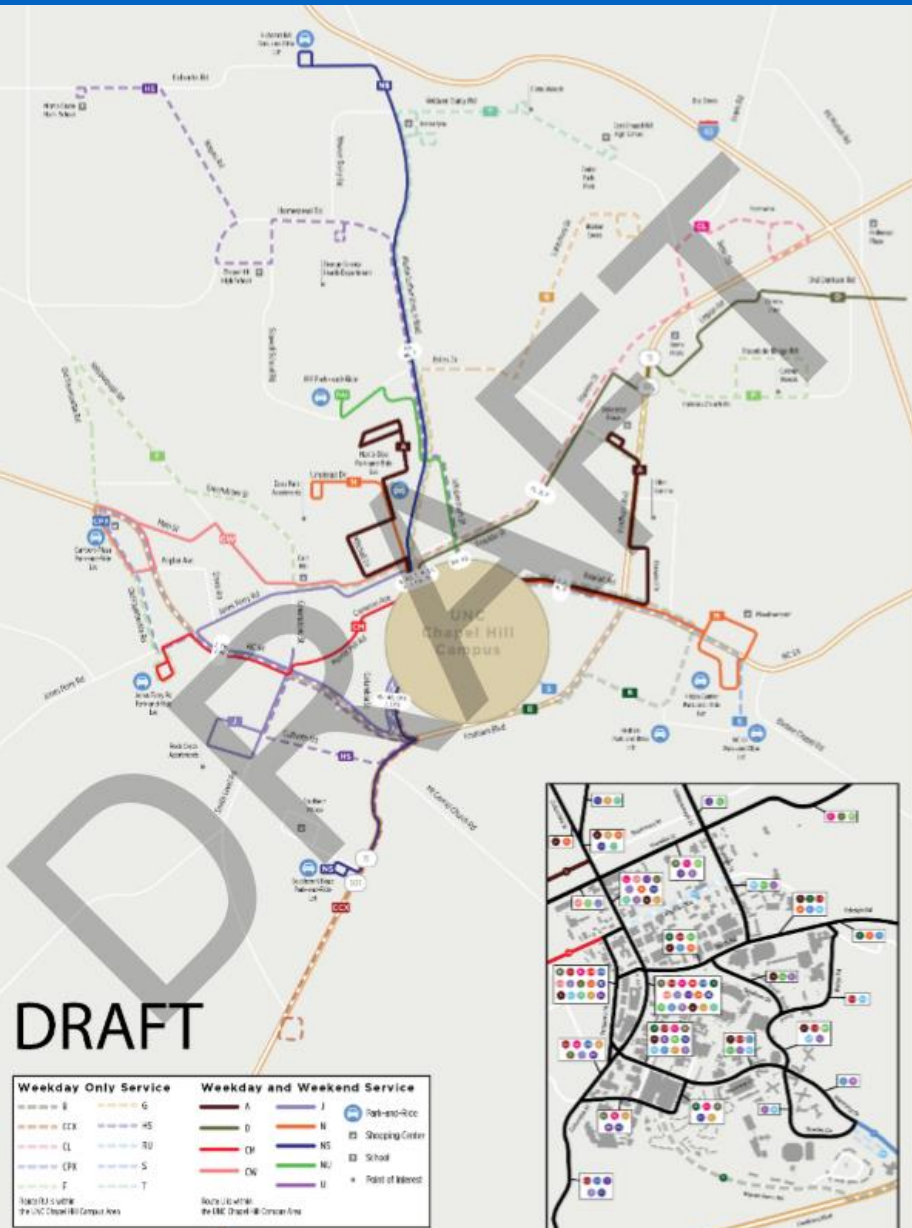
NOTE:

This map highlights major regional transit investments, including light rail, bus rapid transit, commuter rail and key regional bus connections. Not shown are substantial increases in bus coverage and route frequency within Raleigh, Durham, Chapel Hill and Cary.



DRAFT

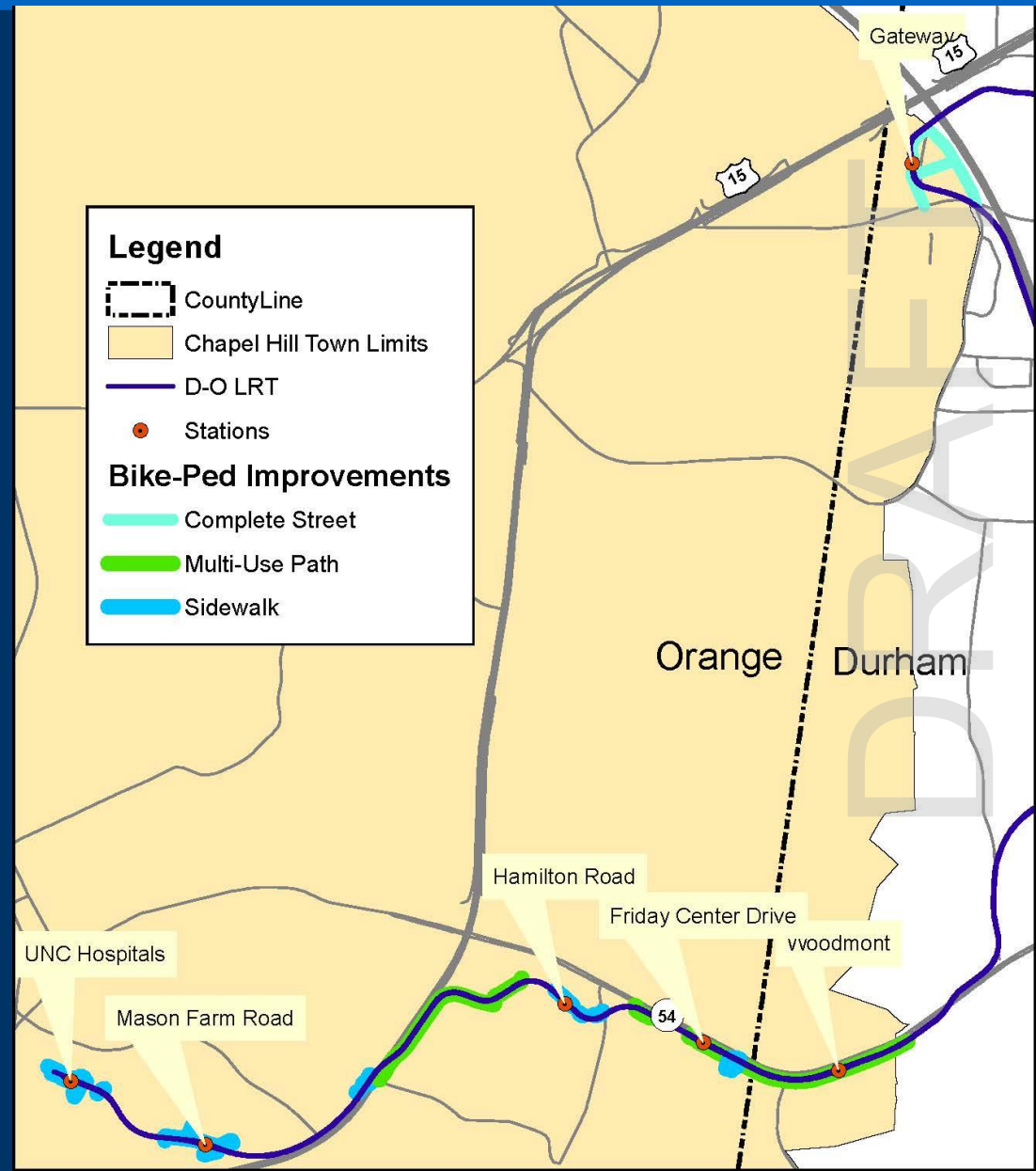
Bus-Rail Integration



- Initial planning with Short Range Transit Plans
- Stations will include bus transfer areas where applicable
- Real planning will begin 2-3 years before light rail starts running

Bike-Ped Access

- 20+ locations under study or included in design
- Expand transportation choices and access to stations
- Leverage LRT construction to complete planned projects



Station Area Planning



TOWN OF CHAPEL HILL

Station Area Planning



If transit investment is made, have opportunity to maximize benefits for community

Are working to leverage project to deliver important community benefits



Planning Goals



Create a Place
For Everyone



Community
Prosperity &
Engagement



Facilitate Getting
Around



Nurture Our
Community



Good Places,
New Spaces



Town/Gown
Collaboration



TOWN OF CHAPEL HILL

Station Area Planning



TOWN OF CHAPEL HILL

Walkable Centers



**Have opportunity to
create vibrant,
walkable centers**



TOWN OF CHAPEL HILL

Three Zones

CORE



Bush Central Station - Richardson, TX

Sites closest to the light rail station and major intersections

GENERAL



Trinity Lakes Campus Commercial - Fort Worth, TX

Majority of the station area development pattern

Transitions from Core to Edge

EDGE



Trinity Lakes Residential Court- Fort Worth, TX

Interface between station area and existing neighborhoods

DRAFT



TOWN OF CHAPEL HILL

Community Benefits



Have opportunity to leverage investment to help provide valued community benefits



TOWN OF CHAPEL HILL

Sample Community Benefits

- **Affordable housing and a range of housing**
- **Public plazas and green spaces**
- **Pedestrian and bicycle connections**
- **Recreational amenities**
- **Public art**
- **Green building practices**

DRAFT



Station Area Planning

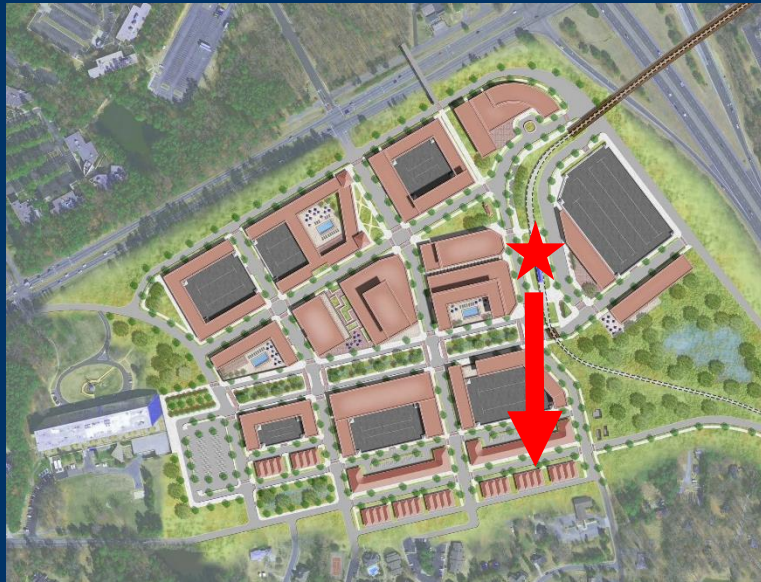


DRAFT



TOWN OF CHAPEL HILL

Three Zones



CORE



Bush Central Station - Richardson, TX

Sites closest to the light rail station and major intersections

GENERAL



Trinity Lakes Campus Commercial - Fort Worth, TX

Majority of the station area development pattern

Transitions from Core to Edge

EDGE



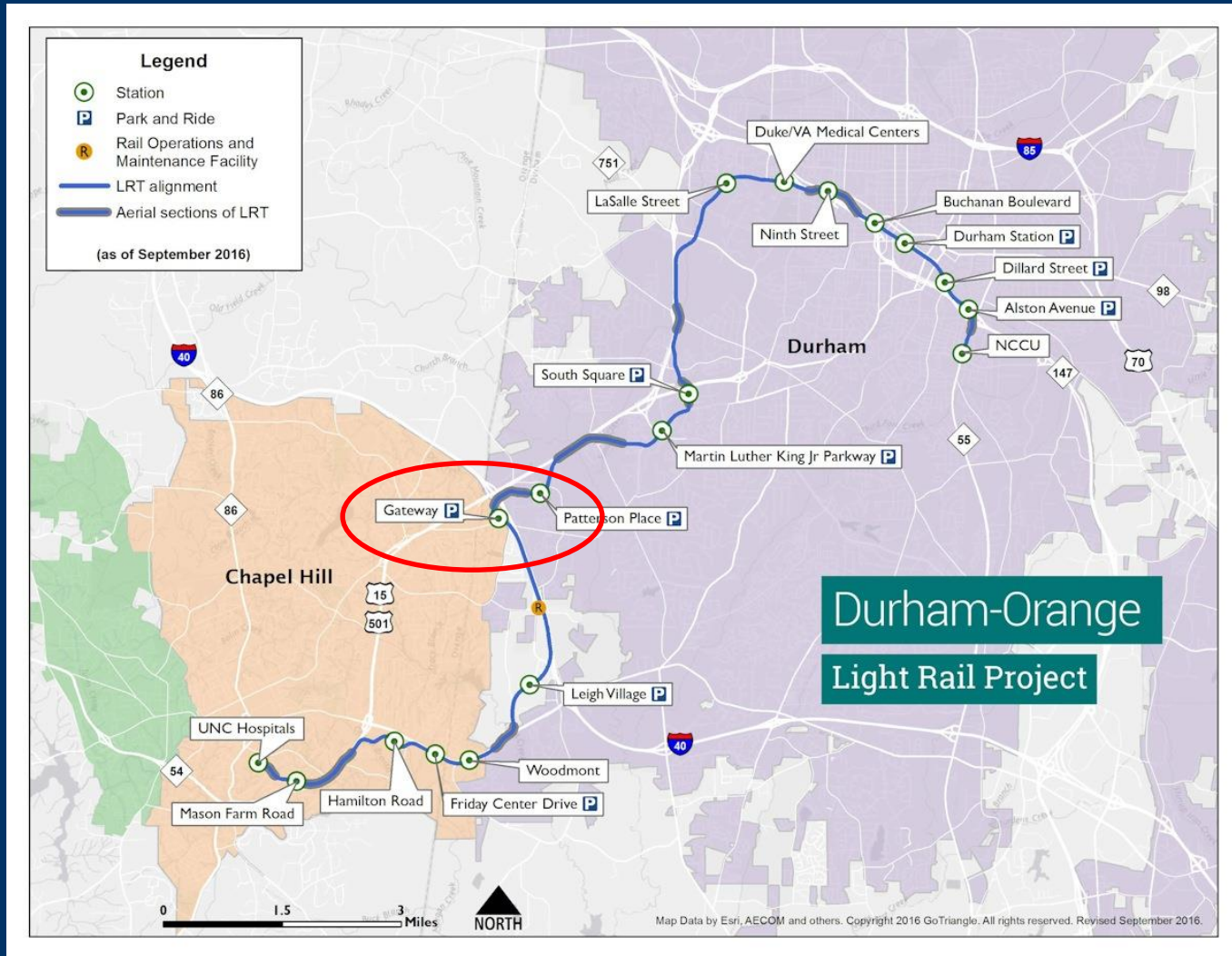
Trinity Lakes Residential Court- Fort Worth, TX

Interface between station area and existing neighborhoods



TOWN OF CHAPEL HILL

Gateway Station Area

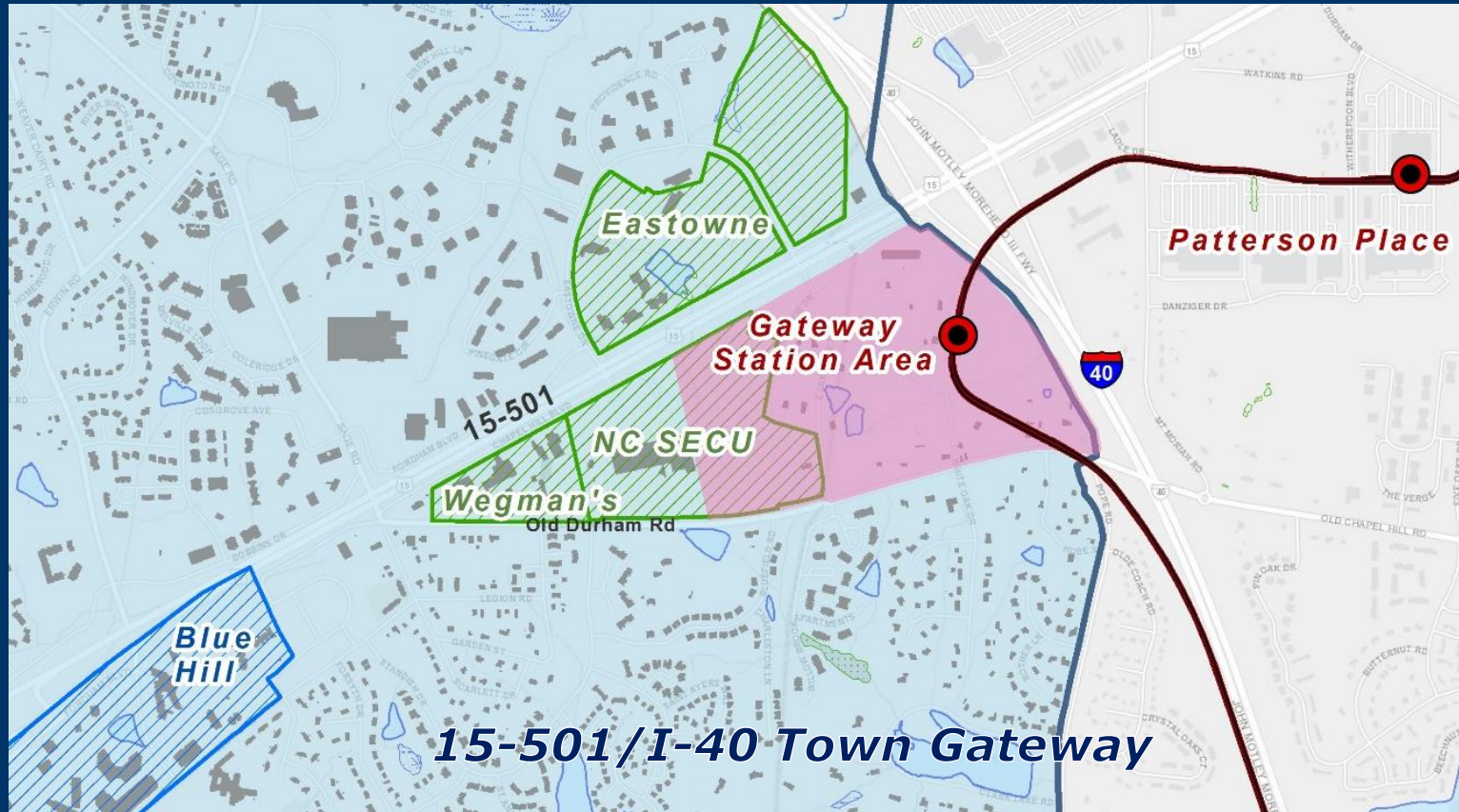


DRAFT



TOWN OF CHAPEL HILL

Gateway Station Area

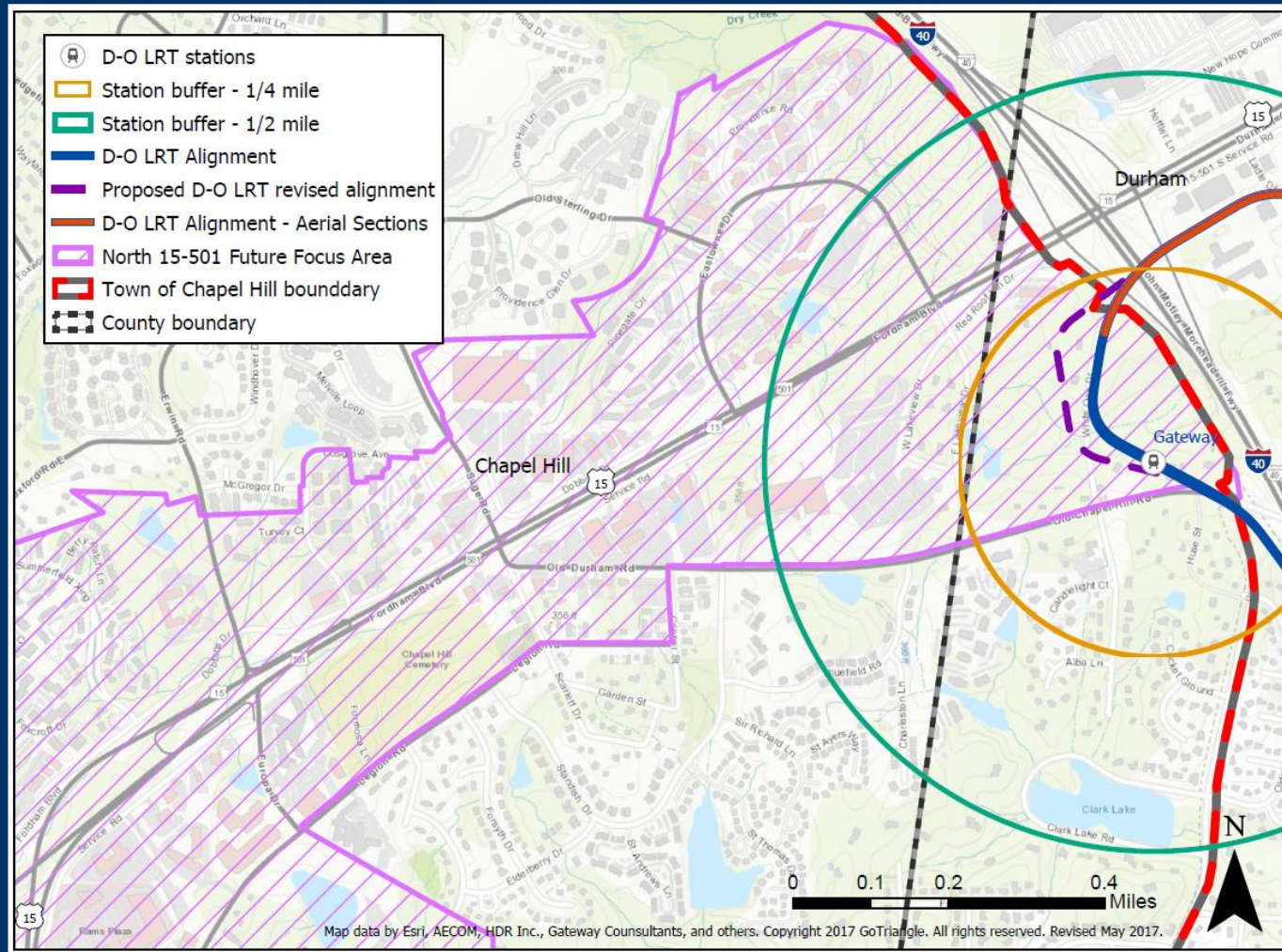


- Important gateway to Chapel Hill
- Mid point on Tobacco Road
- Close to Patterson Place



TOWN OF CHAPEL HILL

Gateway Station Area



DRAFT



TOWN OF CHAPEL HILL

Next Steps

GoTriangle and Gateway Consultants

- Will provide TOD Guidebook (this fall)

Town of Chapel Hill

- Will continue receiving public input through Charting Our Future project
- Will create appropriate TOD zoning districts through LUMO Re-write



Next Steps

Council and Commissioners

- Authorize Town Manager and County Manager to bring back options for continued input and collaboration moving forward

DRAFT



Question & Answer



TOWN OF CHAPEL HILL