

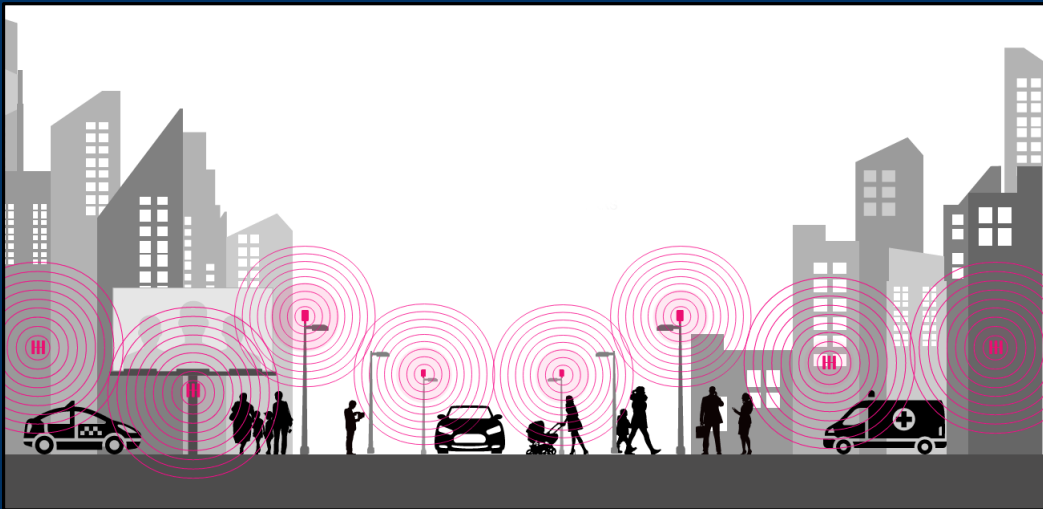
# Wireless Communications Initiative



**Council Public Hearing**  
**WCI Master Plan and Ordinance**  
April 18, 2018

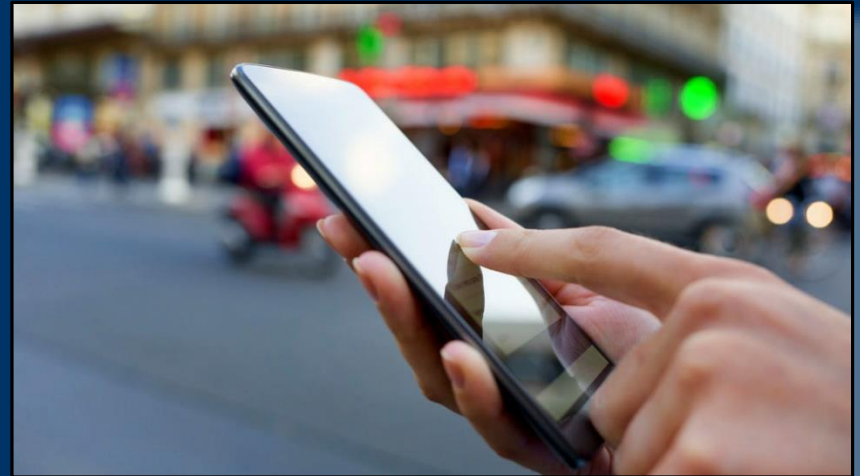
# Purpose

- Position the Town to benefit from coming improvements to wireless communications and minimize impacts
  - Develop a Wireless Master Plan, and
  - Amend LUMO with corresponding regulations

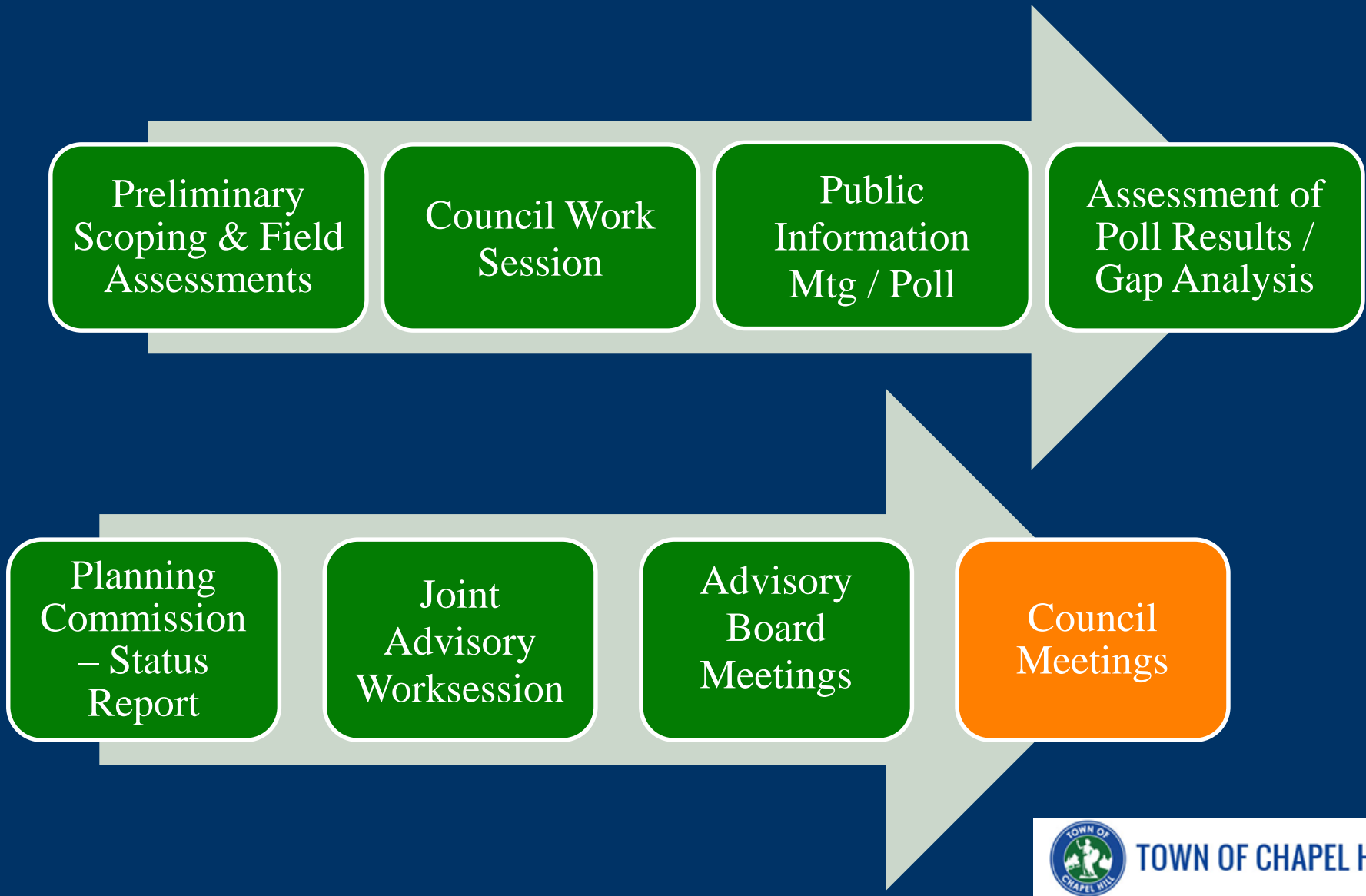


# Key Outcomes

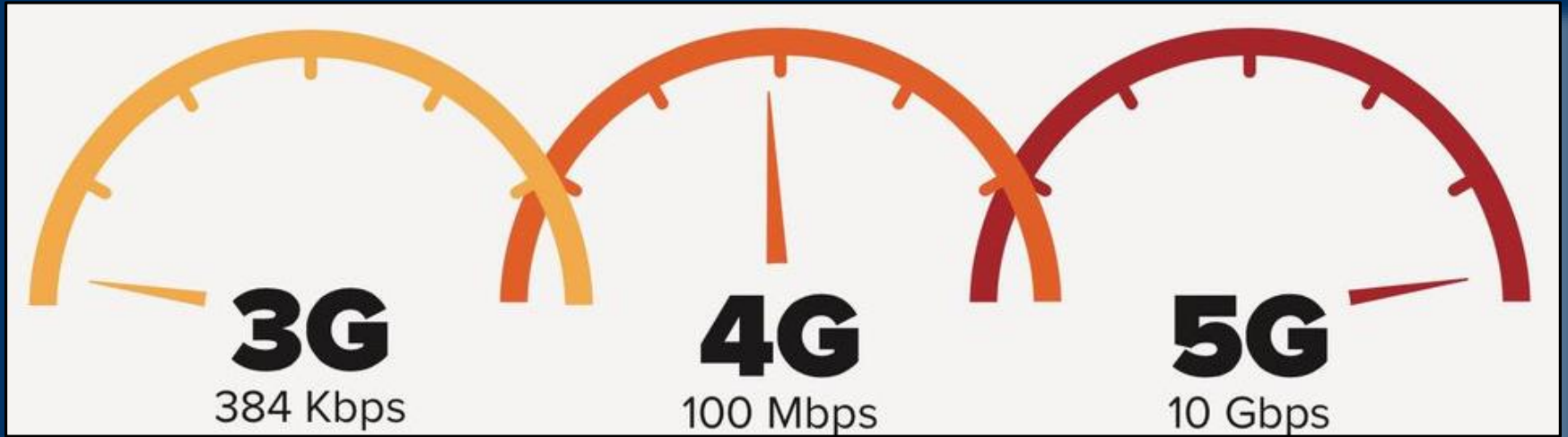
- Better Wireless Service for Community
- More Predictable Permitting for WCF Types
  - Special Use Permits for larger-scale towers
  - Administrative approvals for smaller-scale facilities
  - Rules for Types and Locations of WCFs for Visual Impacts
- Congruence with Federal and State Laws



# Process



# Is a Master Plan & Ordinance Needed?



TOWN OF CHAPEL HILL

[illegible]

# 3X

61%



TOWN OF CHAPEL HILL

# Meeting The Demands

## Towers

Best for low-density populations.

## Small cells

Good complement for dense areas with high capacity needs.

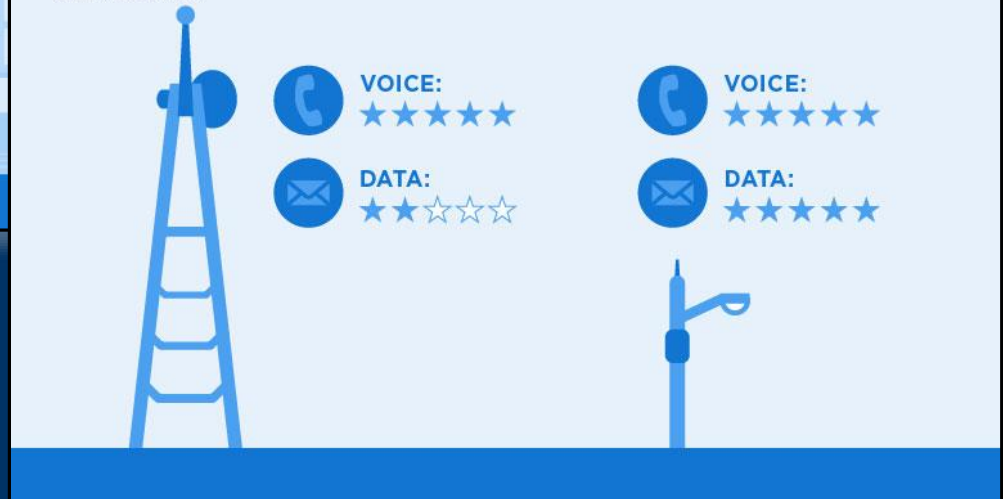


## Towers

Good for voice. Data signal can degrade over distance.

## Small cells

Good for voice and data.



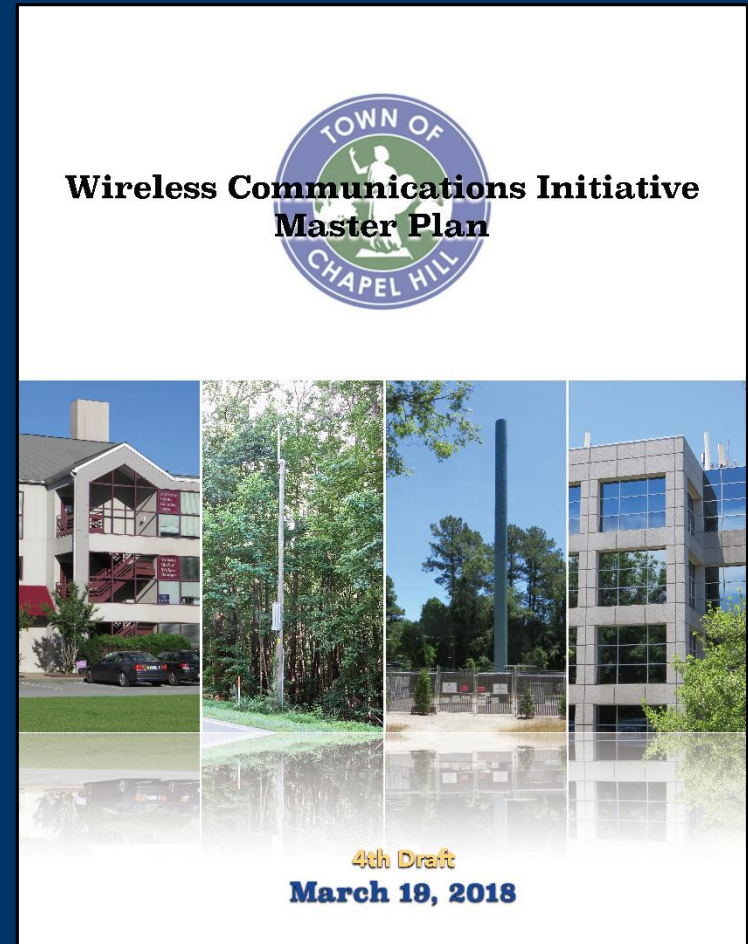
TOWN OF CHAPEL HILL



# Wireless Communications Initiative

## Wireless Master Plan

- Identifies existing wireless infrastructure
- Identifies theoretical network gaps and
- Estimates general location and frequency of needed future infrastructure



TOWN OF CHAPEL HILL



# Wireless Communications Initiative

## Wireless Ordinance

- Regulatory framework for future infrastructure
- Guided by the 2020 Comprehensive Plan, federal & state regulations, and public participation

### ORDINANCE A

(Enacting the Land Use Management Ordinance Text Amendment proposal)

#### AN ORDINANCE AMENDING THE CHAPEL HILL LAND USE MANAGEMENT ORDINANCE, TO CHANGE PROVISIONS PERTAINING TO WIRELESS COMMUNICATIONS FACILITIES (2018-\_\_-\_\_/O- )

WHEREAS, the Council of the Town of Chapel Hill has considered the proposed text amendments to the Land Use Management Ordinance to change provisions pertaining to wireless communications facilities and finds that the amendments are necessary to comply with enabling legislation and are consistent with the goals of the Chapel Hill 2020 Comprehensive Plan.

NOW, THEREFORE BE IT ORDAINED by the Council of the Town of Chapel Hill as follows:

**Section 1. That Article 3, Section 3.7, Use Groups table 3.7-1, the *Use Matrix*, and Appendix A - is hereby revised as follows.**

~~Radio, television or wireless transmitting and/or receiving antenna~~

Collocation on existing tower or base station

New concealed base station

New non-concealed rooftop base station

New concealed dual-purpose tower

New non-concealed base station

New non-concealed tower

**Section 2. That Article 3, Section 3.8.3(b)(3) - Exceptions to Setback and Height Regulations as follows.**

(3) Spires, smokestacks, water tanks, windmills, ~~radio-and-television-transmitting-towers; or-relay-towers~~, provided such structures do not exceed in height the horizontal distance therefrom to the nearest lot line.

**Section 3. That Article 3, Section 3.8.3(b)(4) - Exceptions to Setback and Height Regulations as follows.**

(4) Utility transmission poles, towers, and cables.

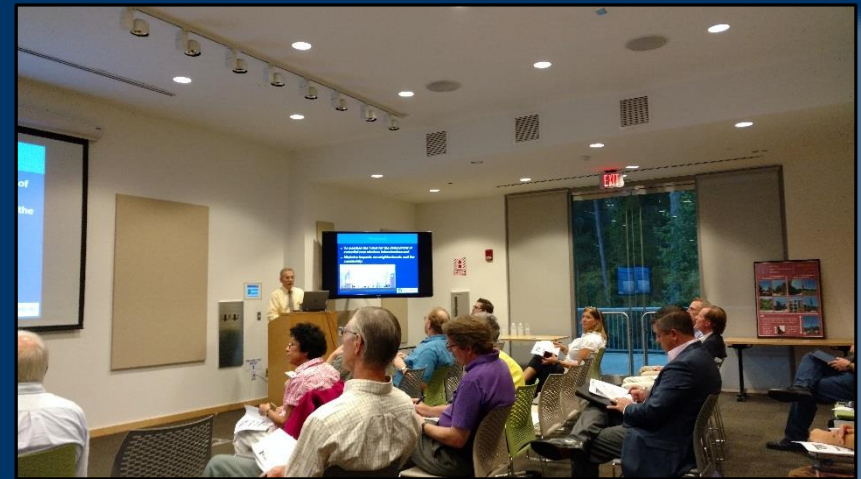
**Section 4. That Article 6, Section 6.11- Radio, television or wireless transmitting and/or receiving facility as follows.**



TOWN OF CHAPEL HILL

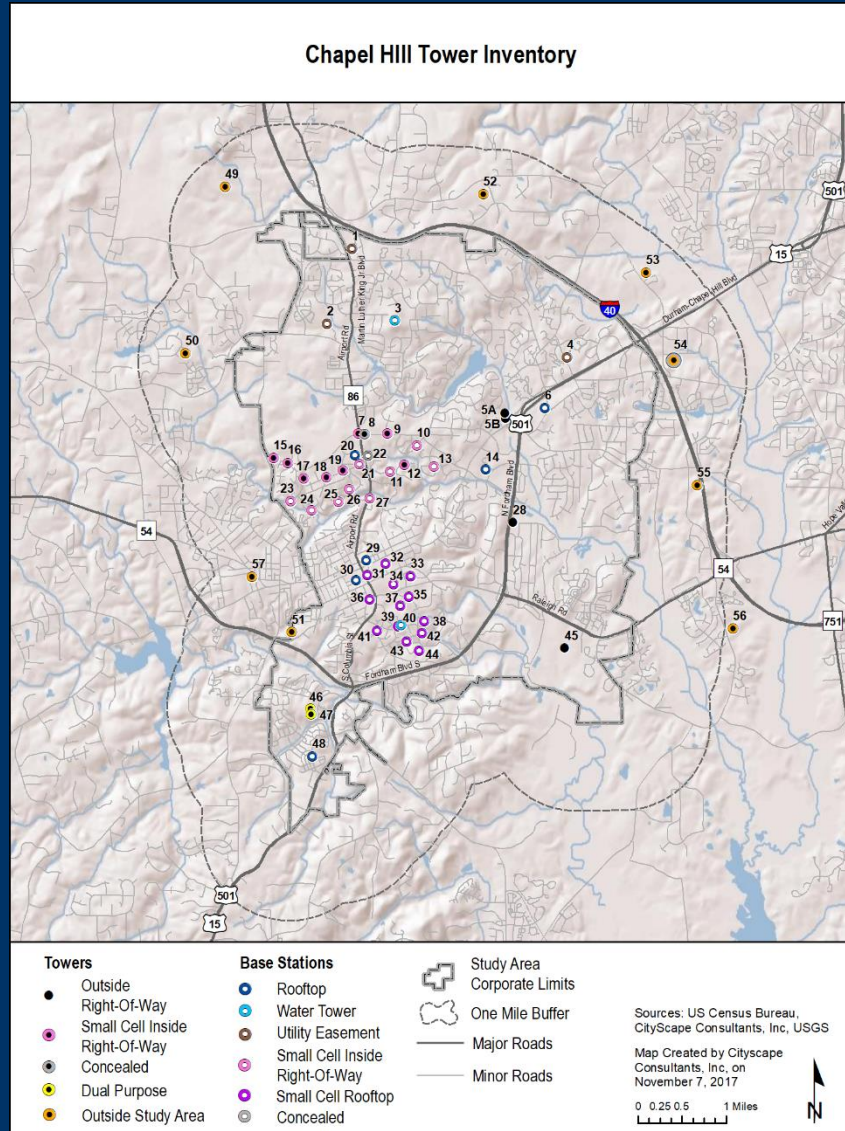
# Poll Results & Public Meetings

- 87% Quality of wireless service is important
- 71% Rely on mobile device to great extent
- 36% Poor coverage where they live
- Overall preference for minimizing visual impacts



TOWN OF CHAPEL HILL

# Wireless Communications Inventory



- 58 Total Facilities
  - 49 within Town limits
  - 9 outside Town limits
- More base stations than towers
- Blend of macro and small cell sites

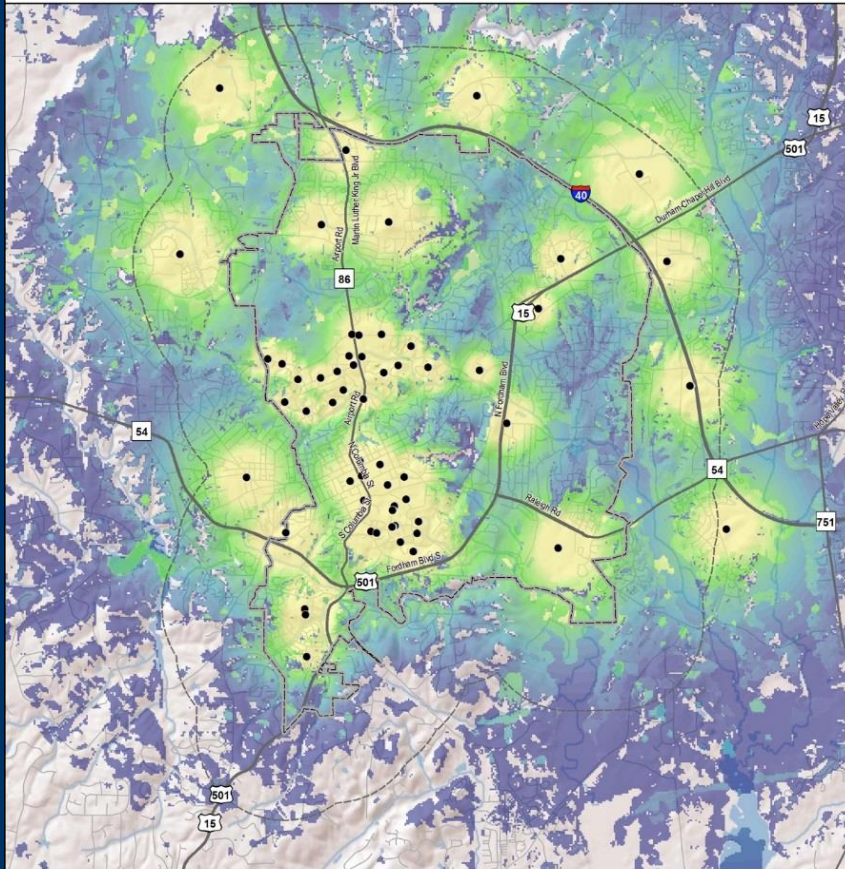


TOWN OF CHAPEL HILL



# Gap Analysis

Theoretical High Frequency Coverage From All Potential Identified Sites Considering Topography, Vegetative Cover and Population Density



Existing Sites  
• Tower or Base Station

Approximate Coverage  
Indoor  
In Vehicle  
Outdoor

Study Area Corporate Limits  
One Mile Buffer  
Major Roads  
Minor Roads

Sources: US Census Bureau, Chapel Hill GIS, CityScape Consultants, Inc, USGS

Map Created by CityScape Consultants, Inc, on November 8, 2017

0 0.25 0.5 1 Miles



## High Frequency Signal Coverage

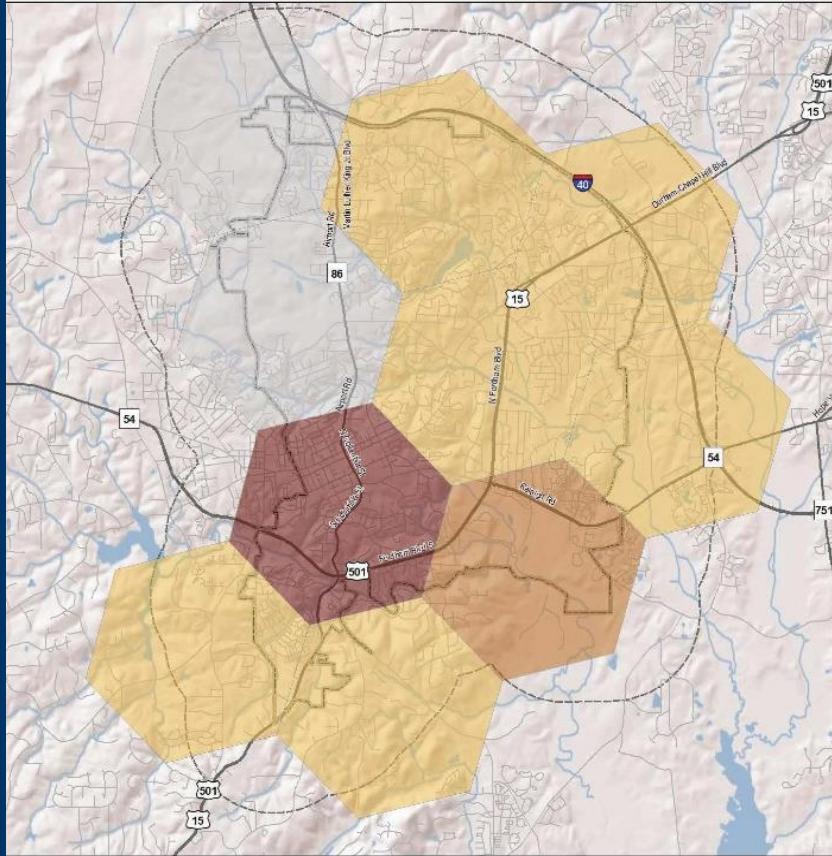
- Light Areas – Strongest Signal
- Dark Areas – Weakest Signal



TOWN OF CHAPEL HILL


# Predicted Infrastructure Needs

Approximate Additional Macro Sites Needed for All Providers  
to Accommodate Capacity at Peak using 4G,  
10 Year Projection



Number of Macro  
Sites Needed



 = 2.5 miles  
across



Study Area  
Corporate Limits



One Mile Buffer

Major Roads

Minor Roads

Sources: US Census Bureau,  
CityScape Consultants, Inc., USGS

Map Created by Cityscape  
Consultants, Inc. on  
November 28, 2017

0 0.25 0.5 1 Miles



## Macro-Tower WCFs Ten-Year Prediction

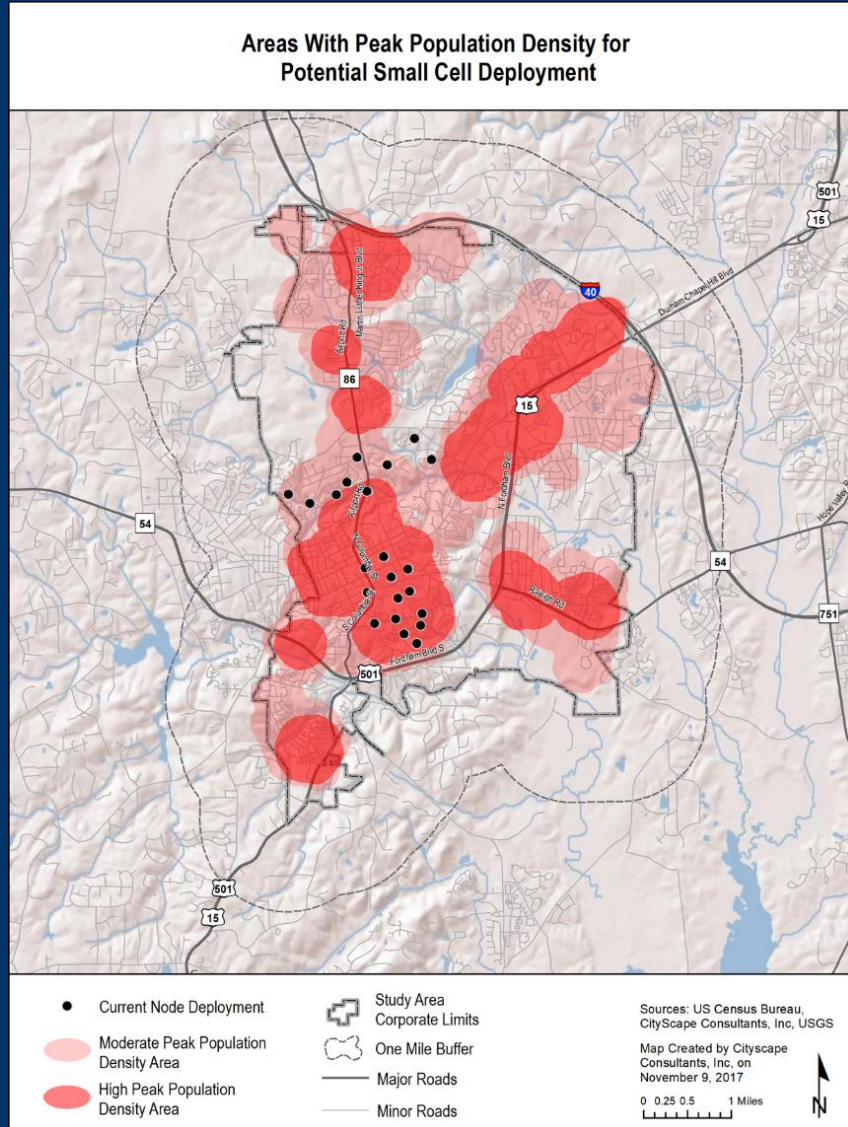
- Light Hexagons – 1 Tower
- Med. Hexagon – 2 Towers
- Dark Hexagon – 3 Towers



TOWN OF CHAPEL HILL



# Predicted Infrastructure Needs



## Small-Cell WCFs Key Deployment Areas

- Lighter Areas – Lesser Demand
- Darker Areas – Greater Demand



TOWN OF CHAPEL HILL



# Managing Visual Impacts

## Small-Cell WCF Examples



TOWN OF CHAPEL HILL

# Hierarchy of Preferences - WCFs

## 1. Collocate on *Existing* Tower or Base Station



TOWN OF CHAPEL HILL

# Hierarchy of Preferences - WCFs

## 2. New Concealed Base Station



TOWN OF CHAPEL HILL



# Hierarchy of Preferences - WCFs

## 3. New Non-Concealed Roof-top Base Station



TOWN OF CHAPEL HILL

# Hierarchy of Preferences - WCFs

## 4. New Concealed Dual- Purpose Tower



TOWN OF CHAPEL HILL

# Hierarchy of Preferences - WCFs

## 5. New Non-Concealed Base Station



TOWN OF CHAPEL HILL



# Hierarchy of Preferences - WCFs

## 6. New Non-Concealed Tower



TOWN OF CHAPEL HILL

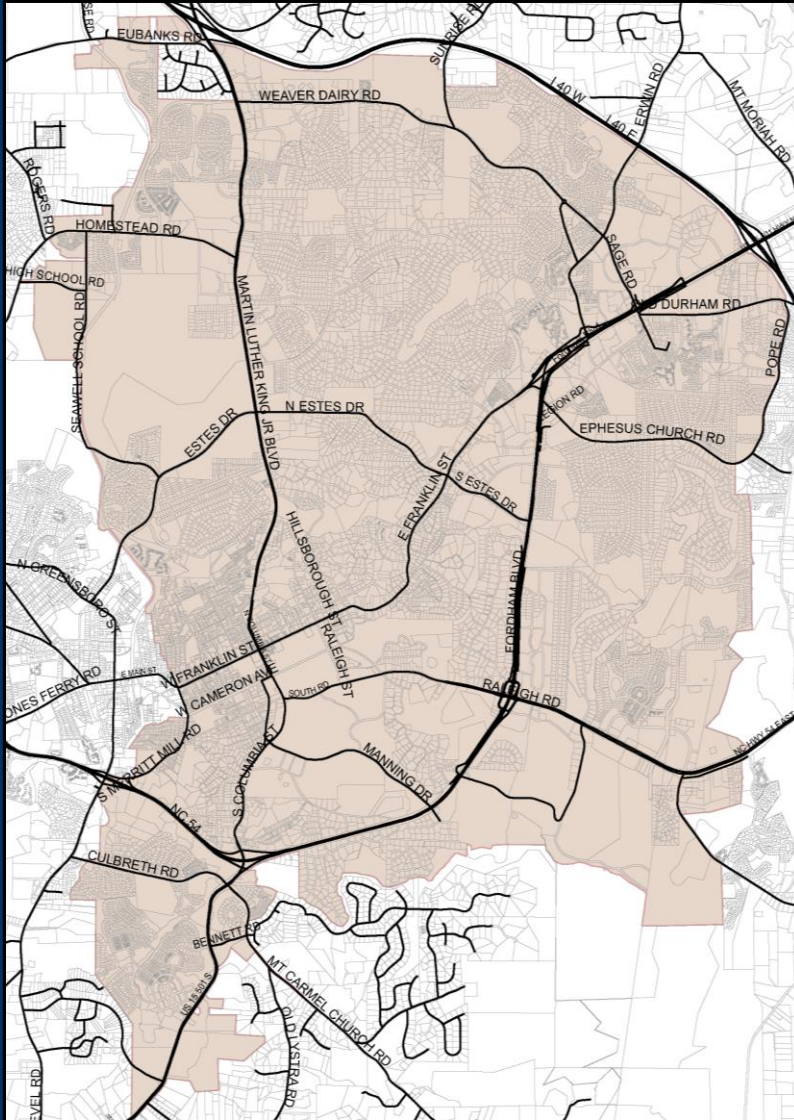
# Location Preferences

## Future Wireless Infrastructure

- A. Town-owned land
  - B. Other publicly owned land
  - C. Private property
  - D. In rights-of-way
- 
- 1. Non-residential districts
  - 2. Multi-family districts (where permitted)
  - 3. Single-family residential districts (where permitted)



# Approval Control



## Rights-of-Way

- Small-Cell WCFs: NCDOT Approves\* in Their ROWs
- Small-Cell WCFs: Town Approves in Their ROWs

## Outside Rights-of-Way

- Small-Scale: Town Staff Administrative Approvals
- Large-Scale WCFs – Council SUP Approvals

\*Town Courtesy Review



TOWN OF CHAPEL HILL

# Key Advisory Board Changes

- ✓ Simplify Permitted Use List
- ✓ Add Landscape Buffer Requirement
- ✓ Conceal Auxiliary Equipment
- ✓ That Town Inventory Existing Utility Poles



# Industry Comments

- ✓ Involved Industry Throughout Process
- ✓ Incorporated a Number of Comments
- ✓ Draft Ordinance - Balance of Community Protection and Efficient Deployment



# Next Steps

Continuation of Public Hearing: May 23, 2018

## Wireless Communications Initiative

- Adoption of Master Plan Resolution
- Adoption of Resolution of Consistency with the 2020 Comprehensive Plan
- Enactment of Land Use Management Ordinance Text Amendment





# Recommendation



TOWN OF CHAPEL HILL

