



# **11SIXTY5 Weaver Dairy Road**

## **Special Use Permit 1165 Weaver Dairy Road**

**Council Public Hearing  
April 2018**

DRAFT

# Special Use Permit Process – 11SIXTY5 Weaver Dairy

**Concept Plan  
Review -**



**Staff Review**



**Advisory Board  
Review**



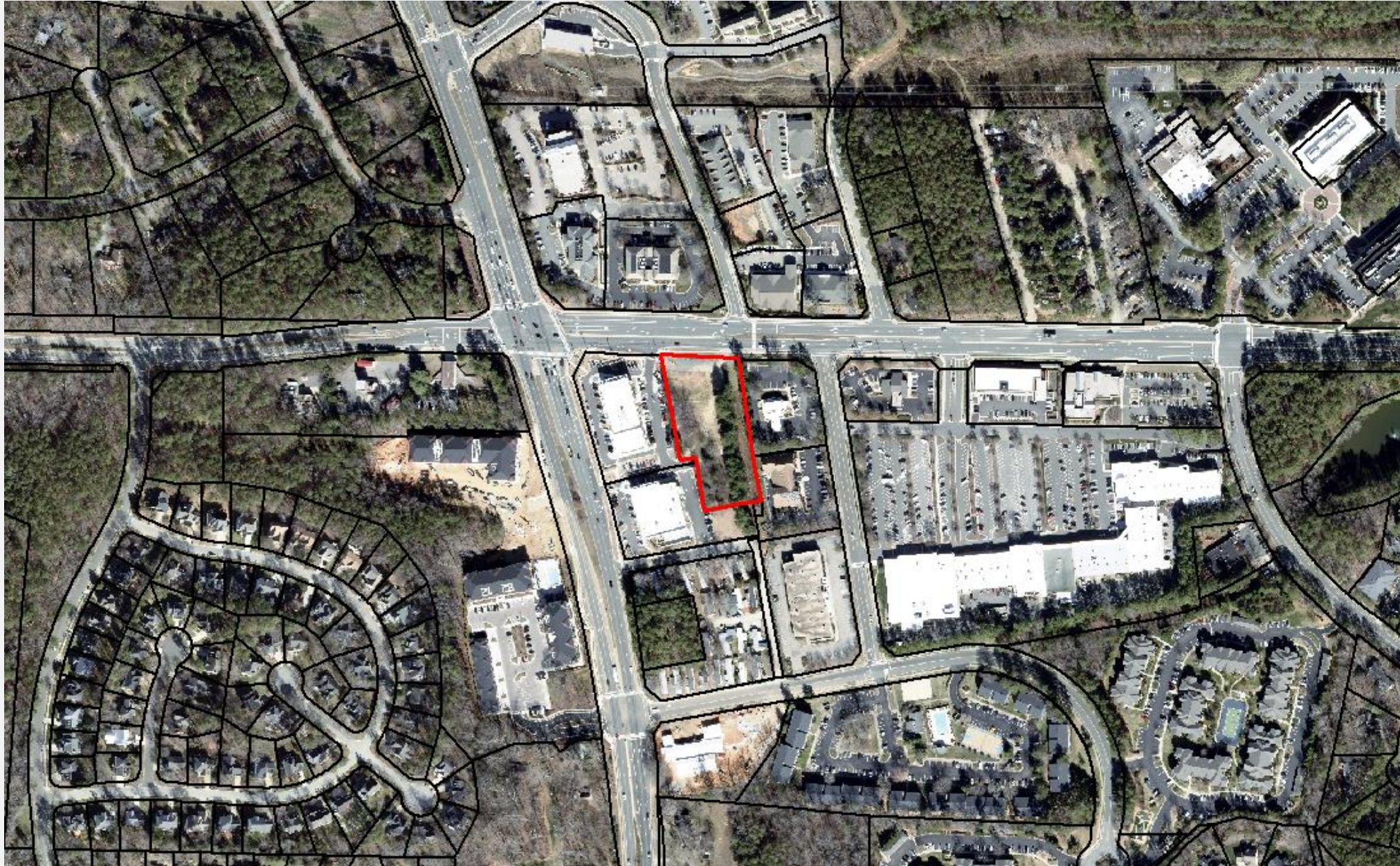
**Council Public  
Hearing**



**Council Action**



# Special Use Permit – 11SIXTY5 Weaver Dairy



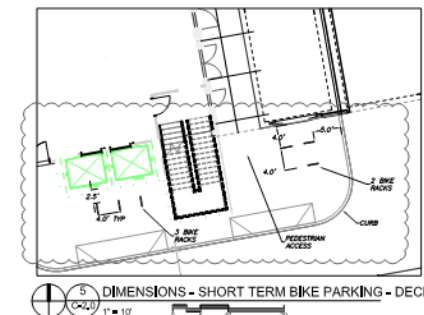
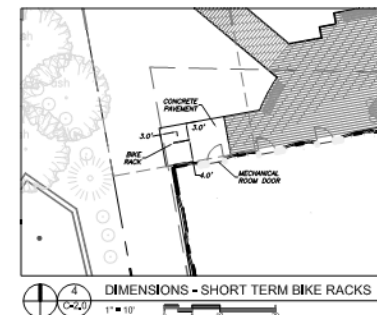
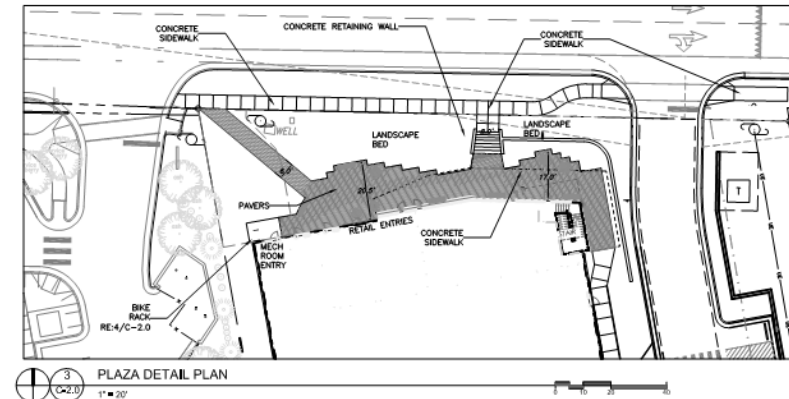
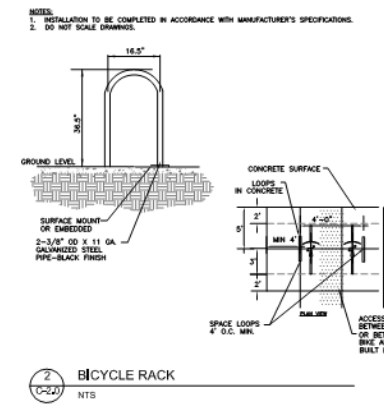
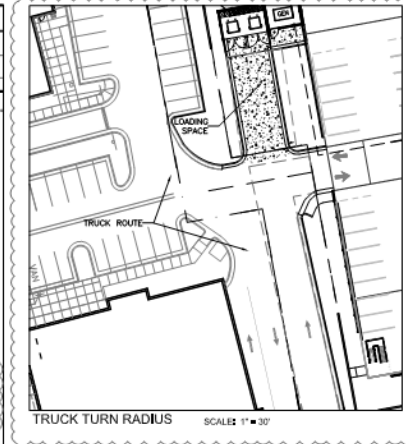
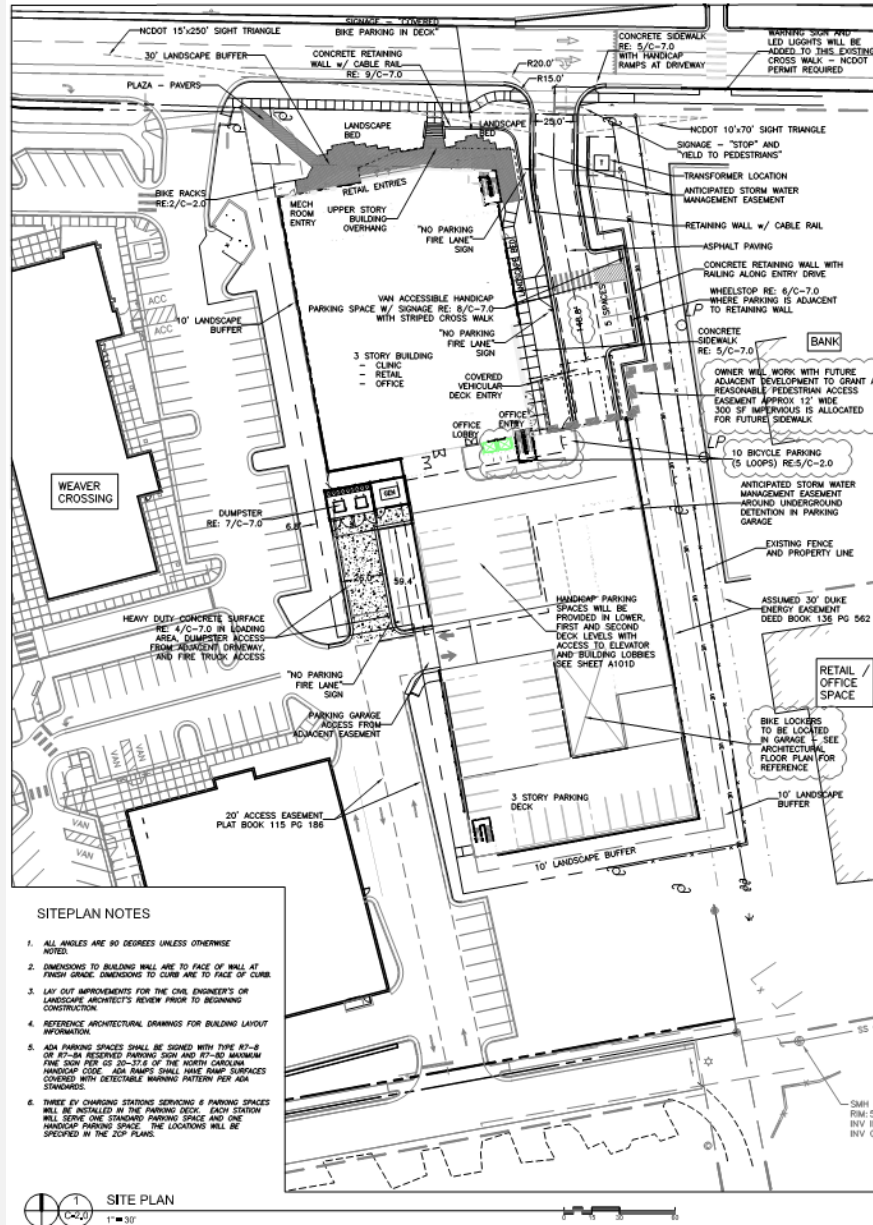
DRAFT



- 1) Proposed 3-story building**
- 2) Office, retail, and medical clinic uses**
- 3) Attached 231 space parking deck**
- 4) Rezoning to Office/Institutional - 3**

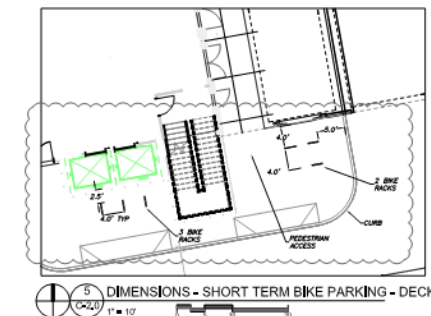
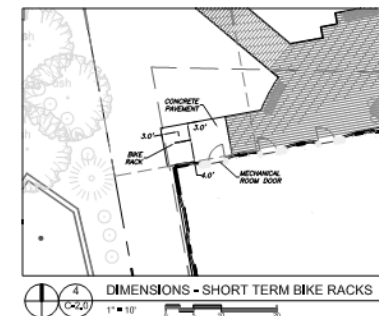
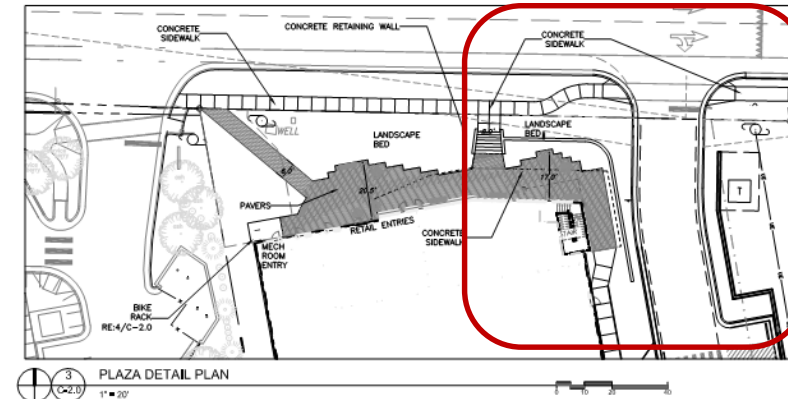
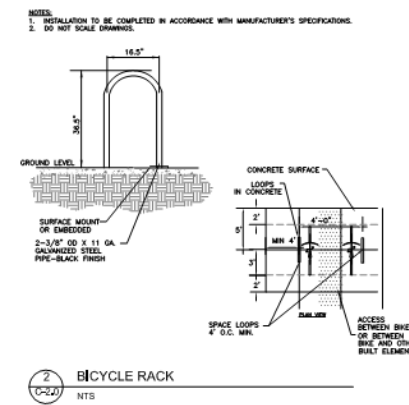
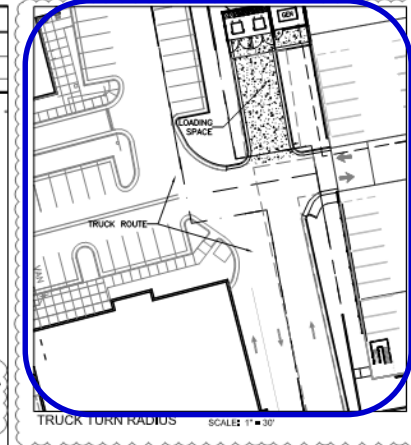
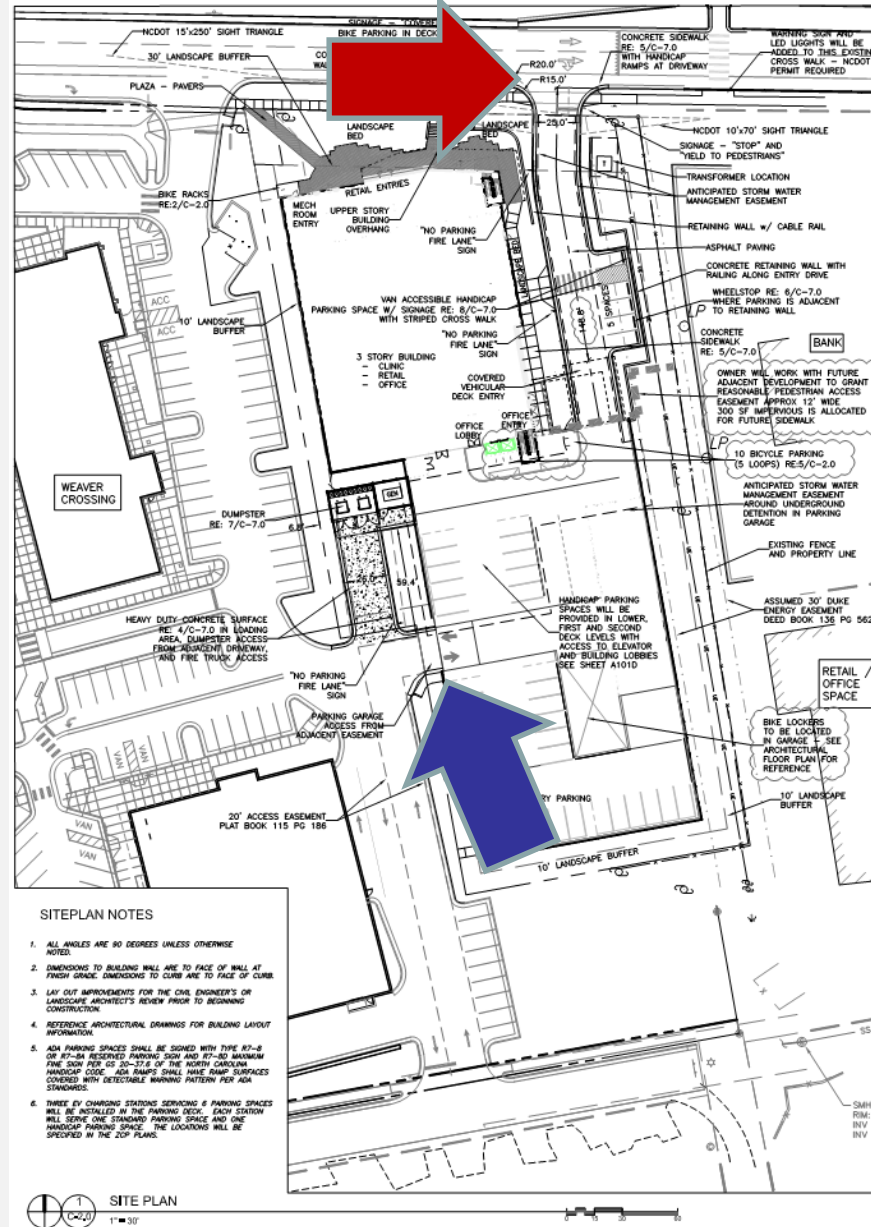
DRAFT

# Project Description – 11SIXTY5 Weaver Dairy



DRAFT

# Access – 11SIXTY5 Weaver Dairy



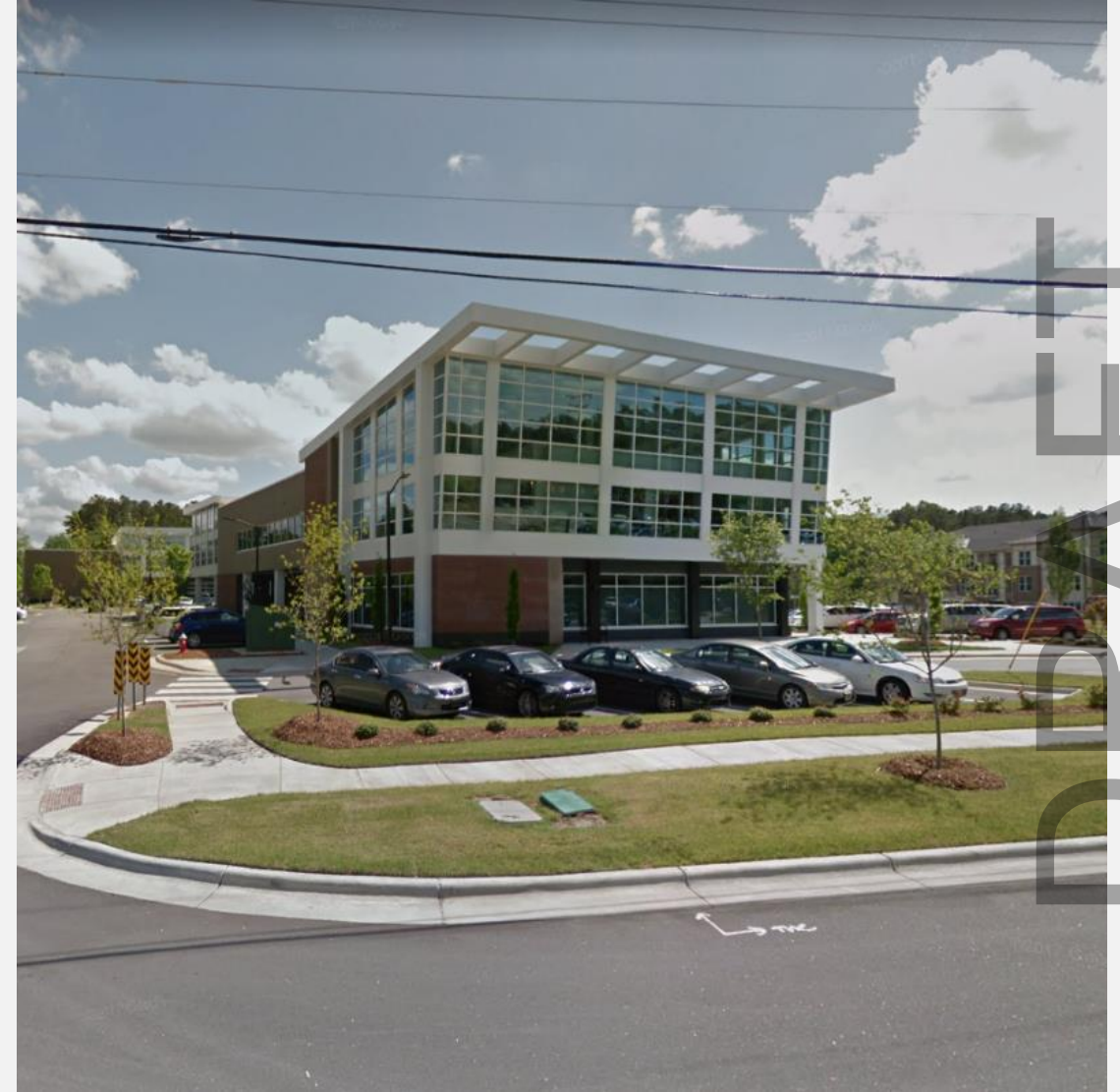
DRAFT



# Adjacent Conditions – 11SIXTY5 Weaver Dairy



East



West

# Modifications – 11SIXTY5 Weaver Dairy

<b>North buffer</b>	<b>30' External Type D</b>	Tree allocations
<b>East buffer</b>	<b>10' Internal Type B</b>	Tree allocations
<b>West buffer</b>	<b>10' Internal Type B</b>	Tree allocations
<b>Steep Slopes</b>	<b>More than 25% disturbed</b>	~5,200 Sq. Ft.



# Advisory Board Recommendations

## Board/Commission

Planning

Community Design

Approval

Environmental Stewardship

Approval

Transportation and  
Connectivity

Approval

DRAFT

# Recommendation – 11SIXTY5 Weaver Dairy



That the Council

- open the Public Hearing;
- receive evidence; and
- recess the Public Hearing to June 13, 2018.