



**Authorize the Town Manager to  
Enter into a Supplemental  
Municipal Agreement with NCDOT  
to Proceed with Additional Design  
Services and Project Construction  
of Variable Message Signs Project**

**Date: 02/21/2018**

# Recommendations

- That the Council receive the presentation;
- That the Council authorize the Town Manager to enter into the Supplemental Municipal Agreement with NC Department of Transportation for additional design services and project construction; and
- That the Council enact the project ordinance amendment and budget ordinance amendment to accept the federal funds and University of North Carolina at Chapel Hill funds for the additional design services and project construction.

DRAFT

# Process

Stakeholders	
Chapel Hill Fire Department	NCDOT Traffic Systems Operations Unit
Chapel Hill Planning and Sustainability	UNC Facilities Services
Chapel Hill Police	UNC Health Care
Chapel Hill Traffic Engineering	UNC Parking
NCDOT Division 7	UNC Public Safety
NCDOT ITS Section	UNC Transportation

- Design Consultant: Kimley-Horn & Associates Inc.
- Monthly Meetings

# Project Phase

- ***System Design***: Identification and documentation of needs and priorities for a comprehensive VMS implementation plan that consists of ten sign installations including location, direction, and estimated cost (Completed)
- ***Preliminary Design***: Preliminary design for the VMS system to determine applicable sign technologies and size, electrical and communication connections for each location, and the operational components of managing the system (Completed)
- ***Detailed Design***: Development of engineering plans, specifications, and estimate package (PS&E) for the VMS system that will be released for bid by the Town (70% Completed)

# 45 MPH Approach

- 3 lines
- 10 characters per line
- 18" character height
- Single post, butterfly mount
- Black/Green





# 35 MPH Approach

- 3 lines
- 10 characters per line
- 12" character height
- Double posts
- Black/Green

DRAFT

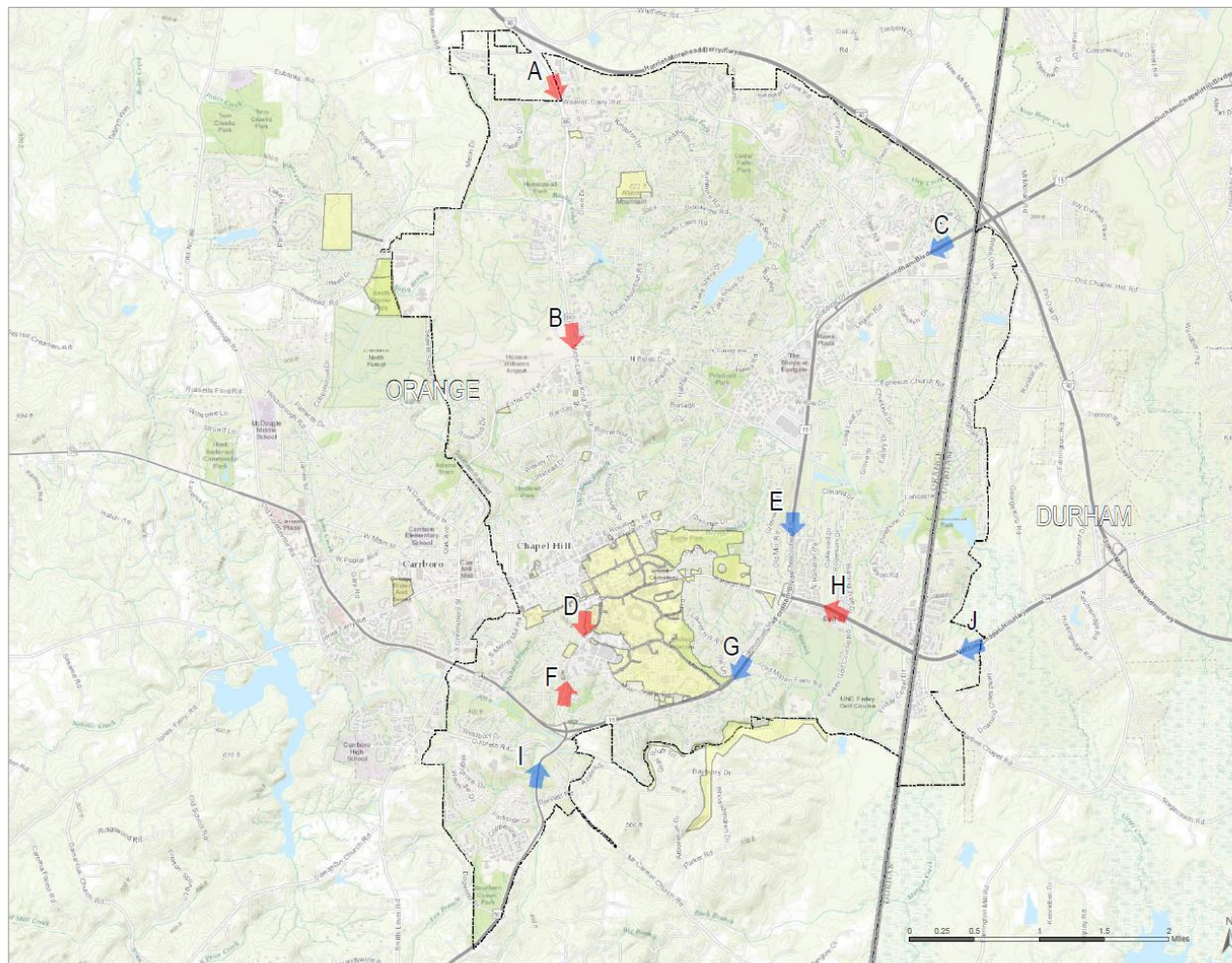


DRAFT

# Figure 1: Priority VMS Locations

Chapel Hill  
Variable Message Sign Project

- ▶ VMS Approach (Medium Sign)
- ▶ VMS Approach (Small Sign)
- UNC Chapel Hill Campus
- Chapel Hill Municipal Limits
- County Boundaries



Service Layer Credits: Sources: Esri, HERE, DeLorme, Intermap, increment P Corp., GEBCO, USGS, FAO, NPS, NRCAN, GeBCo, IGN, Kadaster NL, Ordnance Survey, Esri Japan, METI, Esri China (Hong Kong), Swisstopo, MapmyIndia, © OpenStreetMap contributors, and the GIS User Community

October 2016



Kimley **Horn**

DRAFT

# Fiscal Impacts/Resources

Fund Source	Federal Funds Amount	Reimbursement Rate	Non-Federal Match \$	Non-Federal Match Rate
STBG-DA (New supplemental agreement)	\$819,200	80%	\$204,800 (University: \$194,500 Town: \$10,300)	20%
Total Estimated Cost: \$1,024,000				

# Recommendations

- a) Authorize Town Manager to enter into the Supplemental Municipal Agreement with NCDOT for Additional Design and Construction
- b) Enact the Project Ordinance Amendment and Budget Ordinance Amendment to Accept Additional Design and Construction Funds