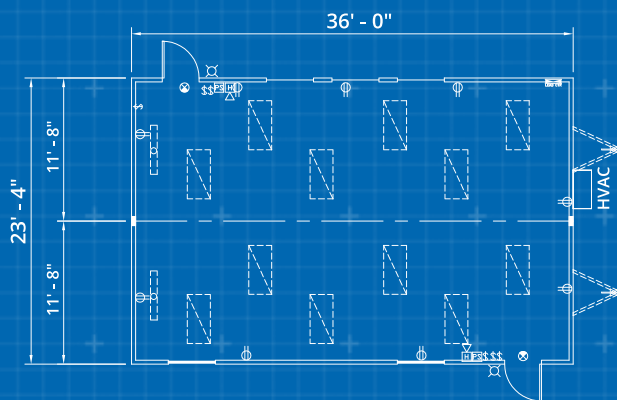


40' x 24' CLASSROOM



In addition to your instructional solution, we can provide additional products and services that complete your space- creating a more productive, comfortable, and safe learning environment.



CUSTOMIZATION

- Steps & Ramps
- Furniture & Appliances
- Technology
- Loss Protection

Dimensions

- 40' Long (including hitch)
- 36' Box size
- 24' Wide
- 8' Ceiling height

Exterior Finish

- Aluminum or wood siding
- I-Beam Frame
- Standard drip rail gutters

Interior Finish

- Vinyl covered gypsum walls
- Carpet or vinyl floors
- Gypsum ceiling

Electric

- Fluorescent ceiling lights
- Breaker panel

Heating/Cooling

- Central HVAC

Windows/Doors

- Horizontal slider windows
- Vision panel doors with standard locks

Other

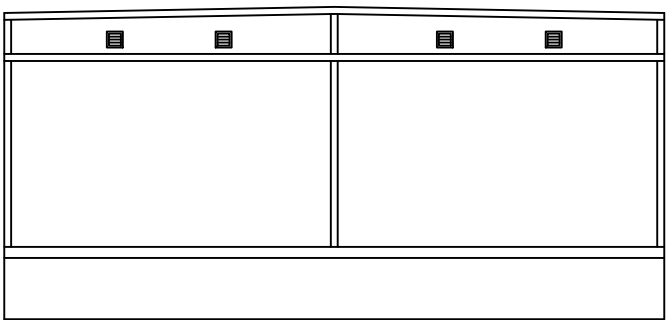
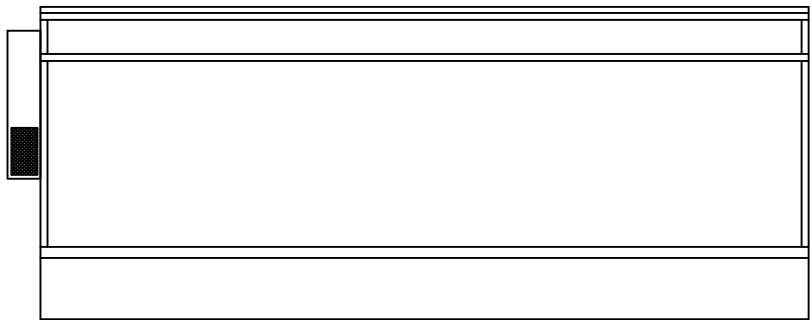
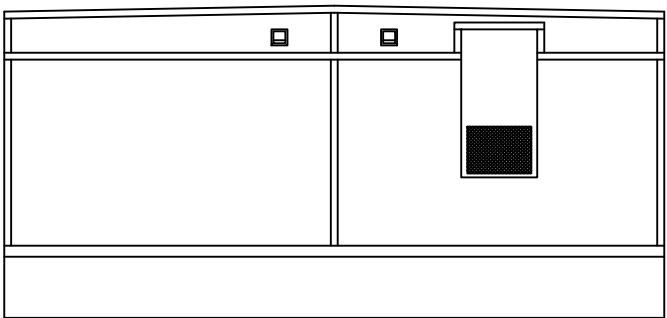
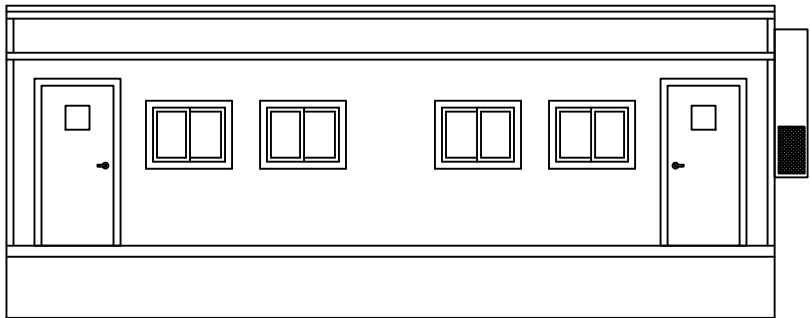
- Chalk boards, dry-erase boards and tack boards available
- Wide open shells available
- Optional restroom



800.782.1500
www.willscot.com

CL4024

CLASSROOM
FLOOR PLAN



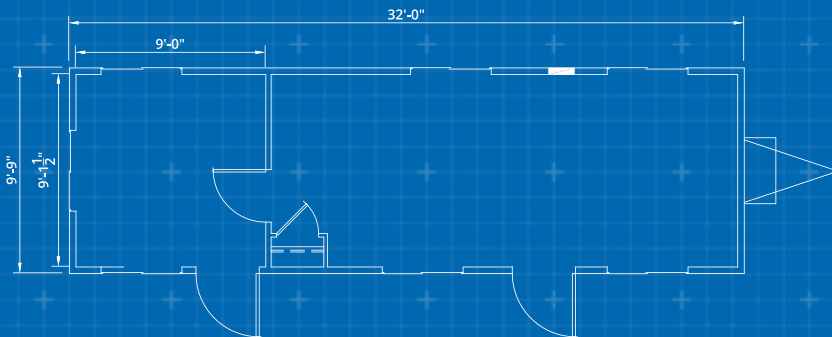
CAD FILE:	DWG #	REV#	REP:	APPROVAL:
	A-1	0	.	
SCALE:	SERIAL#:	DATE	DWN BY:	APVL DATE:
1/8"=1'				

THE USE OF THIS DRAWING FOR ANY MEANS OTHER THAT
INTENDED IS STRICTLY PROHIBITED WITHOUT THE PRIOR
WRITTEN CONSENT OF AN AUTHORIZED WILLIAMS
SCOTSMAN REPRESENTATIVE.
Williams Scotsman, Inc. All Rights Reserved.

36' x 10' OFFICE TRAILER



In addition to your office solution, we can provide additional products and services that complete your space- creating a more productive, comfortable, and safe work environment.



CUSTOMIZATION

- Steps & Ramps
- Furniture & Appliances
- Technology
- Site Services
- Loss Protection

Dimensions

36' Long (including hitch)
32' Box size
10' Wide
8' Ceiling height

Exterior Finish

Aluminum or wood siding
I-Beam Frame
Standard drip rail gutters

Interior Finish

Paneled walls
Carpet or vinyl tile floor
Gypsum or T-grid suspended ceiling

Electric

Fluorescent ceiling lights
Breaker panel

Heating/Cooling

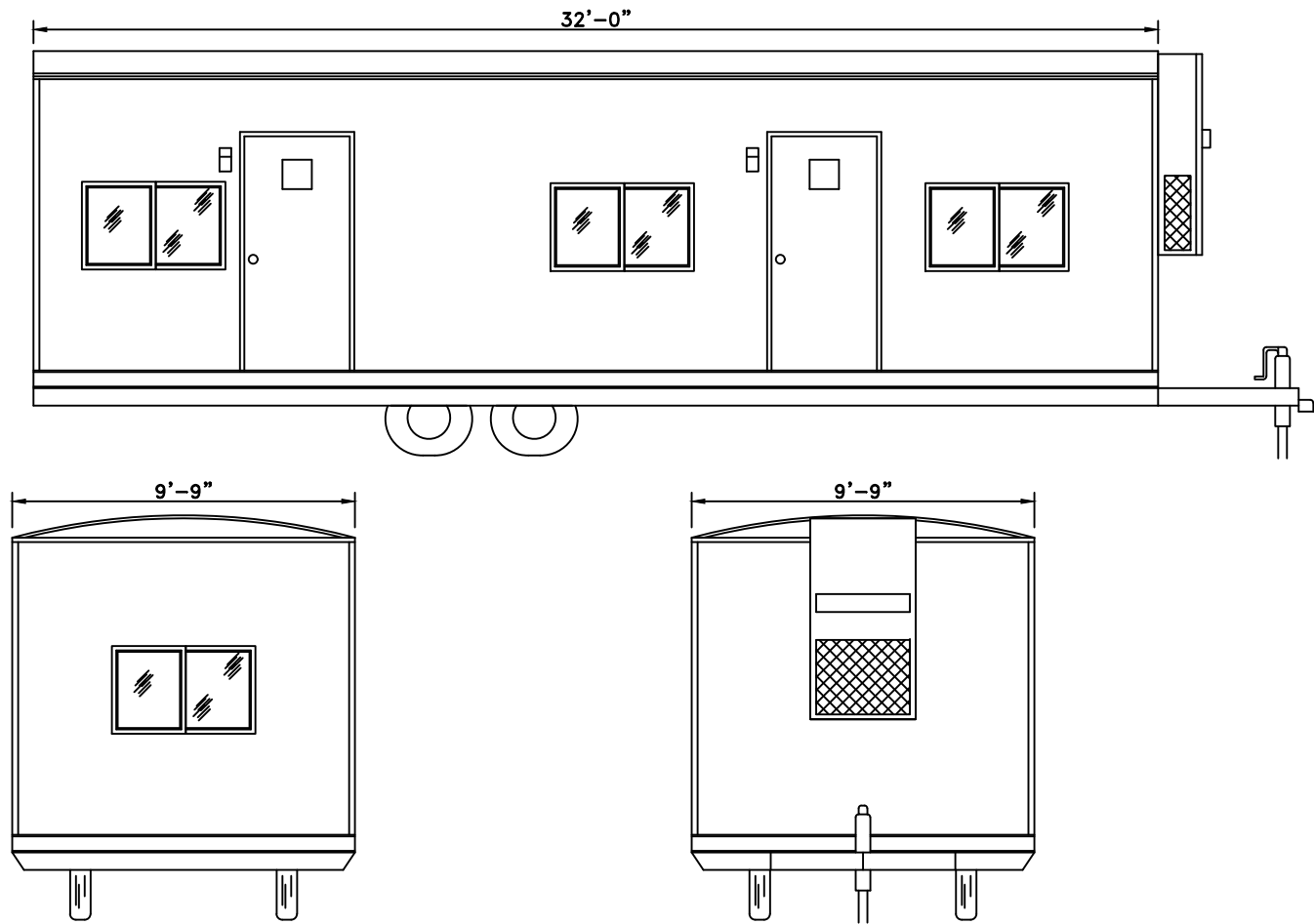
Electric baseboard heat and thru-wall AC unit or central HVAC

Windows/Doors

Horizontal slider windows
(2) Vision panel doors with standard locks or (2) steel doors with dead bolt lock

Other

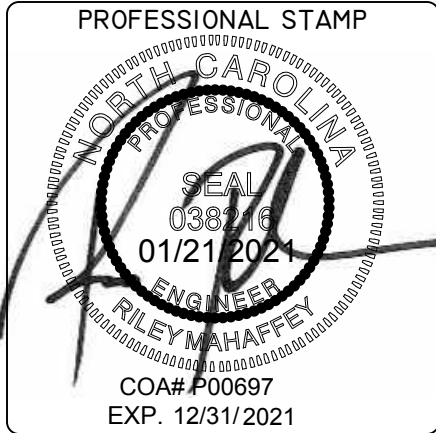
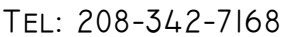
Private office(s)
Optional restroom



AD FILE:	DWG #	REV#	REP:	APPROVAL:
	A-1	0	.	
SCALE:	SERIAL#:	DATE	DWN BY:	APVL DATE:
1/16"=1'				

THE USE OF THIS DRAWING FOR ANY MEANS OTHER THAN INTENDED IS STRICTLY PROHIBITED WITHOUT THE PRIOR WRITTEN CONSENT OF AN AUTHORIZED WILLIAMS SCOTSMAN REPRESENTATIVE.

Williams Scotsman, Inc. All Rights Reserved.



PROJECT TITLE / SITE ADDRESS

5325 Old Oxford Rd
Durham, NC. 27712

SHEET TITLE

PLANS

SHEET SIZE 22"x17" (C)

REF NO./PROJECT NO.

DRAWN BY
CODY K.

CHECKED BY

1/15/2021

SHEET NO.

A 2.0

NOTE
RAMPS CAN BE INSTALLED IN BOTH DIRECTIONS