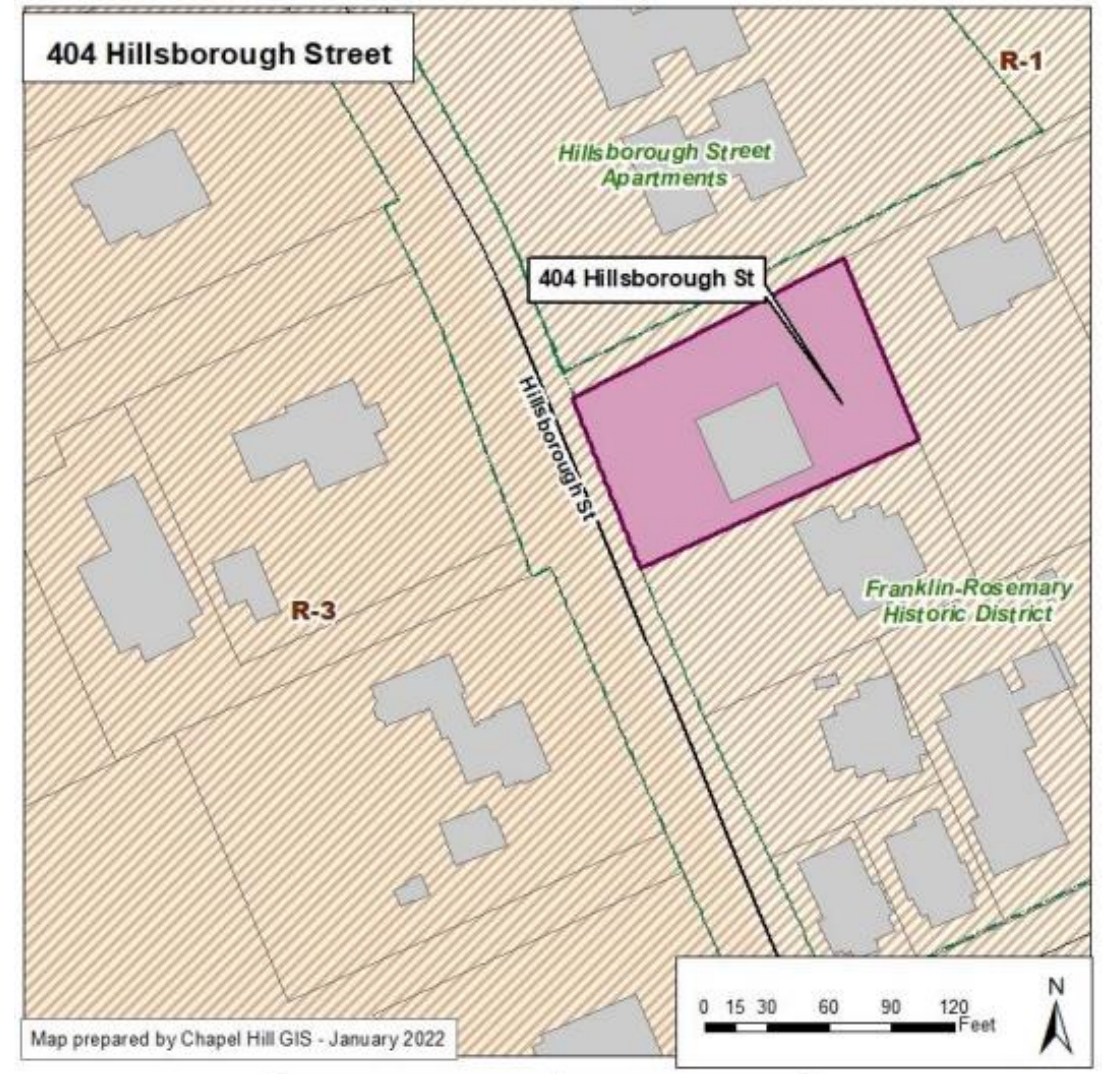
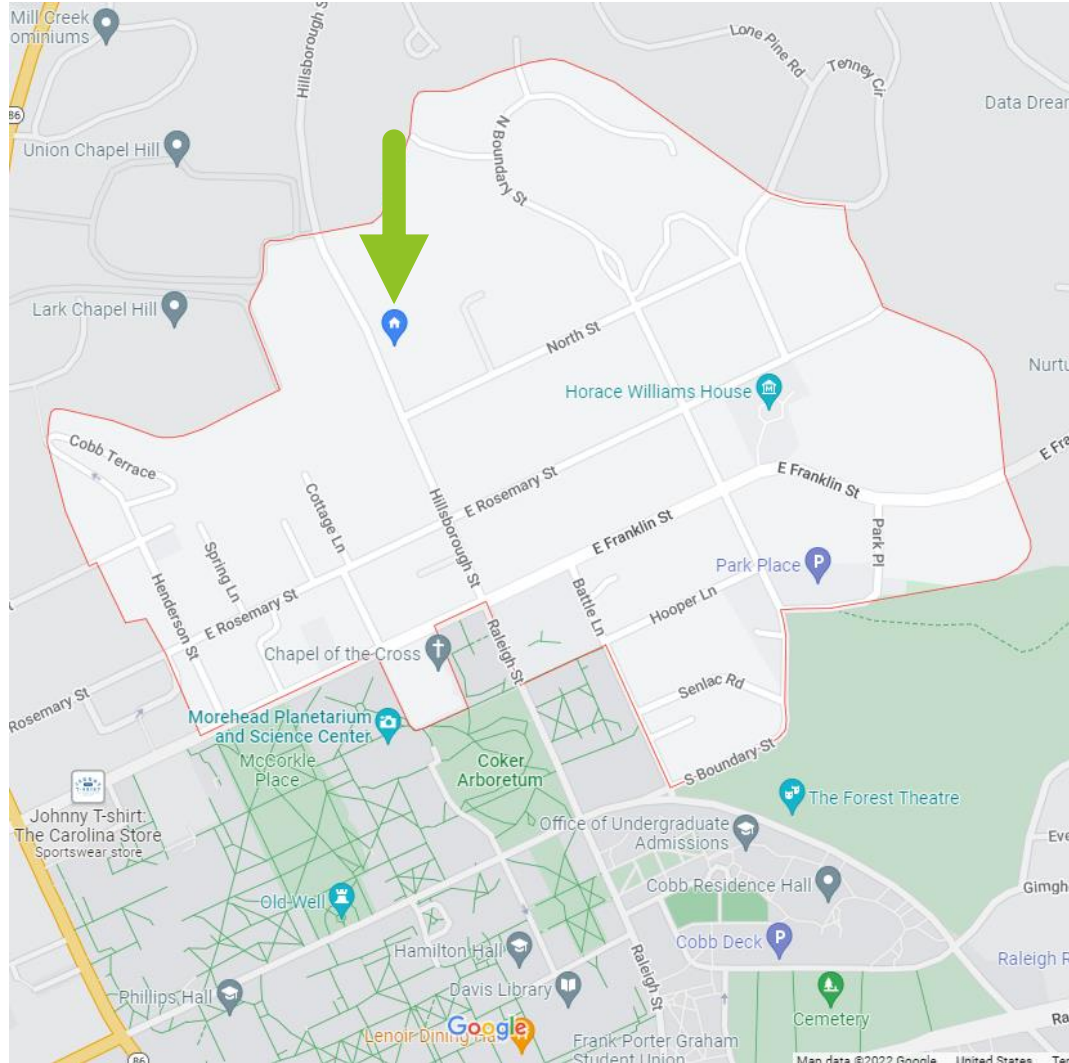


The background features abstract, overlapping green geometric shapes, primarily triangles and polygons, in various shades of green, creating a modern, layered effect. The text is centered in a clean, sans-serif font.

Application for Certificate of Appropriateness 404 Hillsborough Street

Location - 404 Hillsborough Street



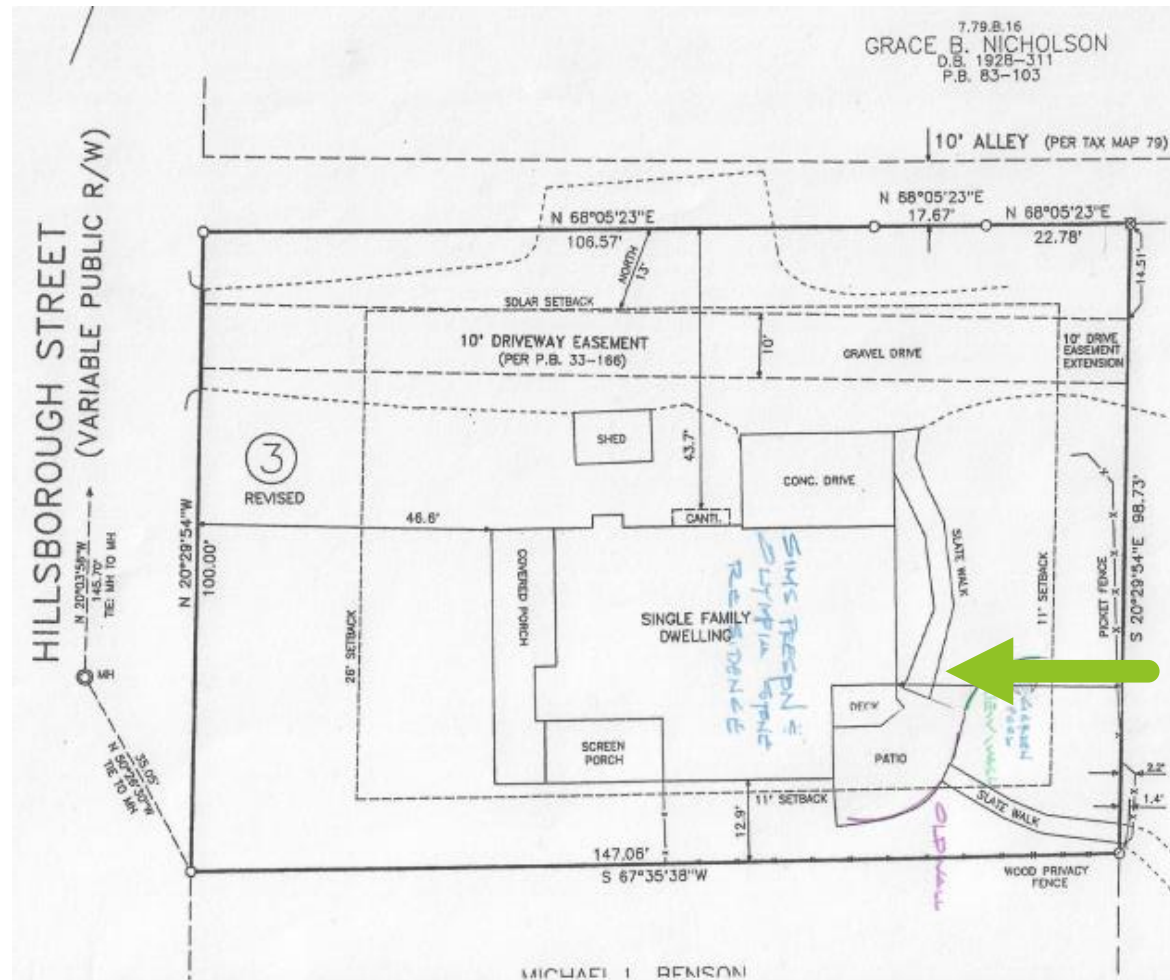
Location - 404 Hillsborough Street

- Built - 2000
- Not included in any list of historic resources
- Located on .34 acres
- 3,656 finished sf
- Quality Grade B+10
- Condition average
- Exterior walls frame
- 96 sf shed



Project Description

Back yard extension of fieldstone retaining wall
and construction of small garden pool



Project Description



extension
begins

19 ft extension of retaining wall

- ▶ Dimensions and materials match existing wall
- ▶ Tennessee/Pennsylvania weathered fieldstone and Portland cement/sand mortar
- ▶ 18 inches high, 13.5 inches deep

Project Description



Small circular pool

- ▶ Shallow, approx. 12 inches deep
- ▶ 48 inches in diameter
- ▶ Rigid liner manufactured by MacCort
- ▶ 13-inch weathered fieldstone cap matches retaining wall

Design standards in staff memo are met

1.3.7. Construct new walls using traditional materials and designs that are compatible in configuration, height, material, scale, and detail with the character of the building, site, and district.

- a. Walls in front and side yards should generally not exceed 30” and should be constructed of red brick or fieldstone.
 - ▶ In back yard
 - ▶ Less than 30”
 - ▶ Fieldstone
- b. Walls constructed of cut stone, bare concrete block, or with thin stone veneers applied to concrete or other structural block are not appropriate in locations visible from the street.
 - ▶ Solid fieldstone, not cut stone, concrete block, or veneer
 - ▶ Not visible from the street

Design standards in staff memo are met

1.3.6. Site new walls and fences in configurations and locations that are compatible with the character of the building, site, and district and consistent with the location and height of other walls and fences in the district.

- ▶ Similarly sized fieldstone walls throughout neighborhood. Less than 5 minutes walk



North St



Hillsborough St



North St

Design standards in staff memo are met

1.1.7. Introduce new site features to be compatible in scale, design, and materials with the overall historic character of the site and district. Utilize traditional materials in the construction of benches, terraces, gazebos, trellises, fences, and walls.

- ▶ Garden pool capped with weathered fieldstone and mortar; matching materials used throughout neighborhood
- ▶ Follows pre-existing pool in neighborhood



517 North St



404 Hillsborough St

Design standards in staff memo are met

1.1.8. Introduce contemporary site features—including playground equipment and swimming pools—in locations that do not diminish or compromise the overall character of the site and district, typically in rear yards or other locations not visible from the street.

- ▶ Pool and wall are in the back yard.
- ▶ Not visible from the street or from neighbors



View from street
(looking east)



View into backyard
(looking south)

Design standards in staff memo are met

1.1.8. Introduce contemporary site features—including playground equipment and swimming pools—in locations that do not diminish or compromise the overall character of the site and district, typically in rear yards or other locations not visible from the street.

- ▶ Pool and wall are in the back yard.
- ▶ Not visible from the street or from neighbors



View into backyard
(looking west)



View into backyard
(looking north)

Design standards in staff memo are met

1.1.8. Introduce contemporary site features—including playground equipment and swimming pools—in locations that do not diminish or compromise the overall character of the site and district, typically in rear yards or other locations not visible from the street.

- ▶ Pool and wall are in the back yard.
- ▶ Not visible from the street or from neighbors



In backyard
(looking north)



In backyard
(looking south)

Thank you