



# 214 GLENBURNIE

COA APPLICATION for REVISIONS: Renovation & Addition  
MAY 11, 2022 (REVISED)





1 southeast elevation - APPROVED

1/8" = 1'-0"



2 southeast elevation - proposed

1/8" = 1'-0"



2 northeast elevation - APPROVED

1/8" = 1'-0"



3 northeast elevation - proposed

1/8" = 1'-0"



5

northwest elevation - APPROVED

1/8" = 1'-0"



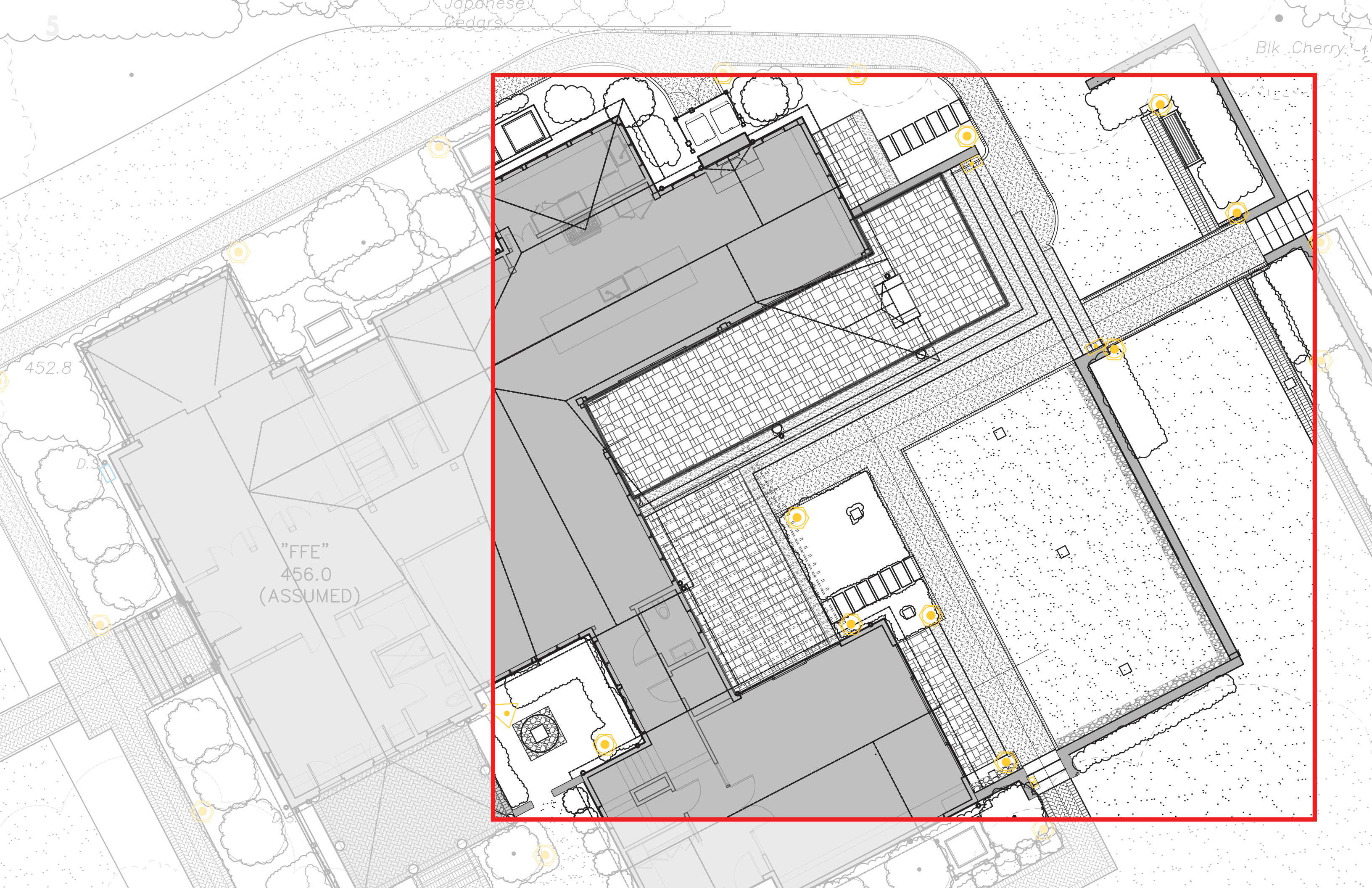
6

northwest elevation - proposed

generator - screened w/  
evergreen landscaping

1/8" = 1'-0"





452.8

"FFE"  
456.0  
(ASSUMED)