




Chapel Hill Transit Facility Expansion

Katy Fontaine, Project Manager



Overview

- Chapel Hill Transit continues to improve its services to support the Town of Chapel Hill, Town of Carrboro, and University of North Carolina at Chapel Hill.
- The North South Bus Rapid Transit (NSBRT) will allow for more frequent buses, shorter travel times, and more reliable service.
- In 2020, we debuted our first three (3) battery electric buses and have an additional eight (8) buses on order.

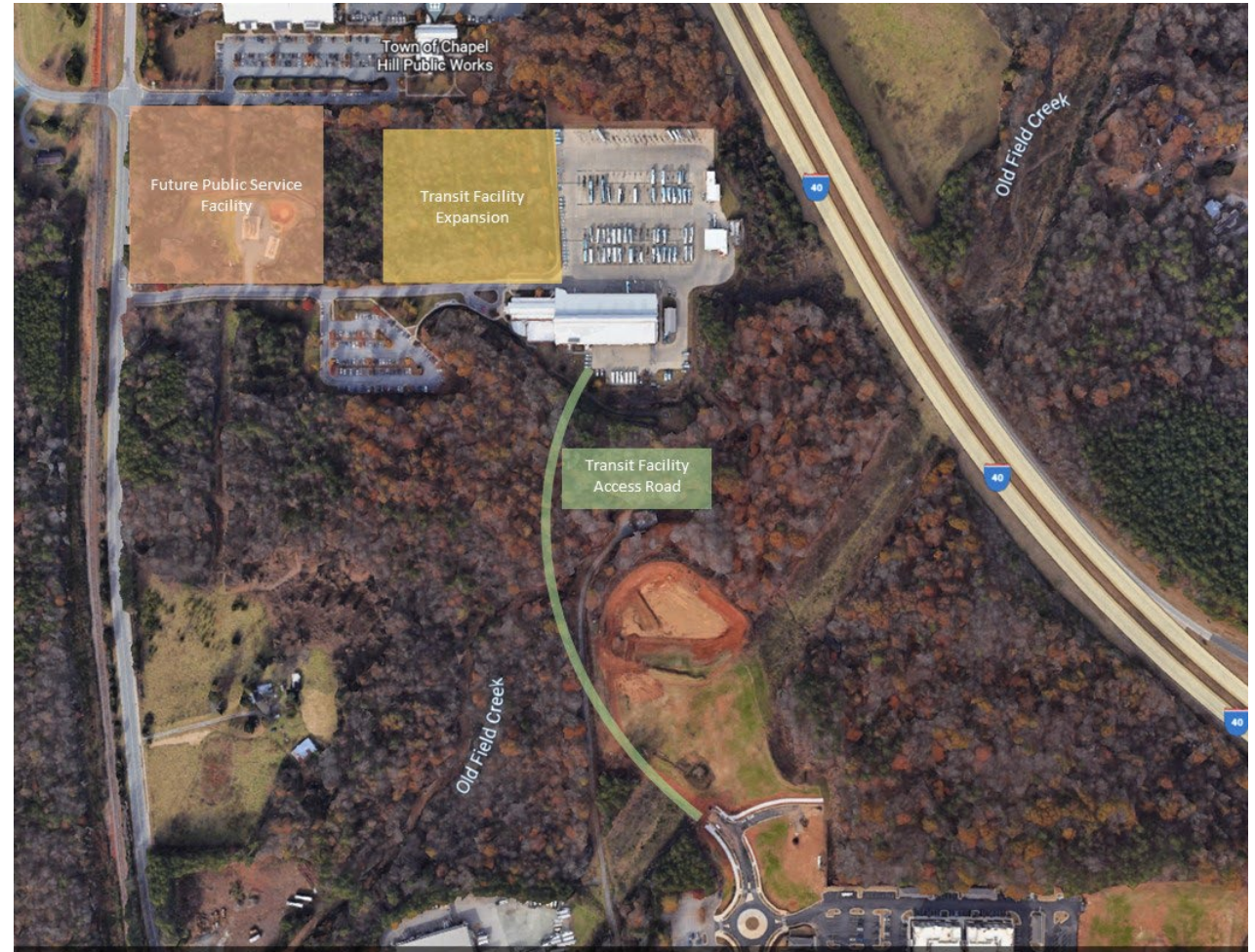


Future Needs

- Current facility does not have the infrastructure to support the future zero emission vehicles.
- Current bus lot does not have the space to support the additional vehicles needed to operate the NSBRT.
- Current operations and maintenance center does not have the space to support our future day-to-day functions.
- Current facility only has one (1) access point, which would cause issues if blocked or inaccessible for some reason.

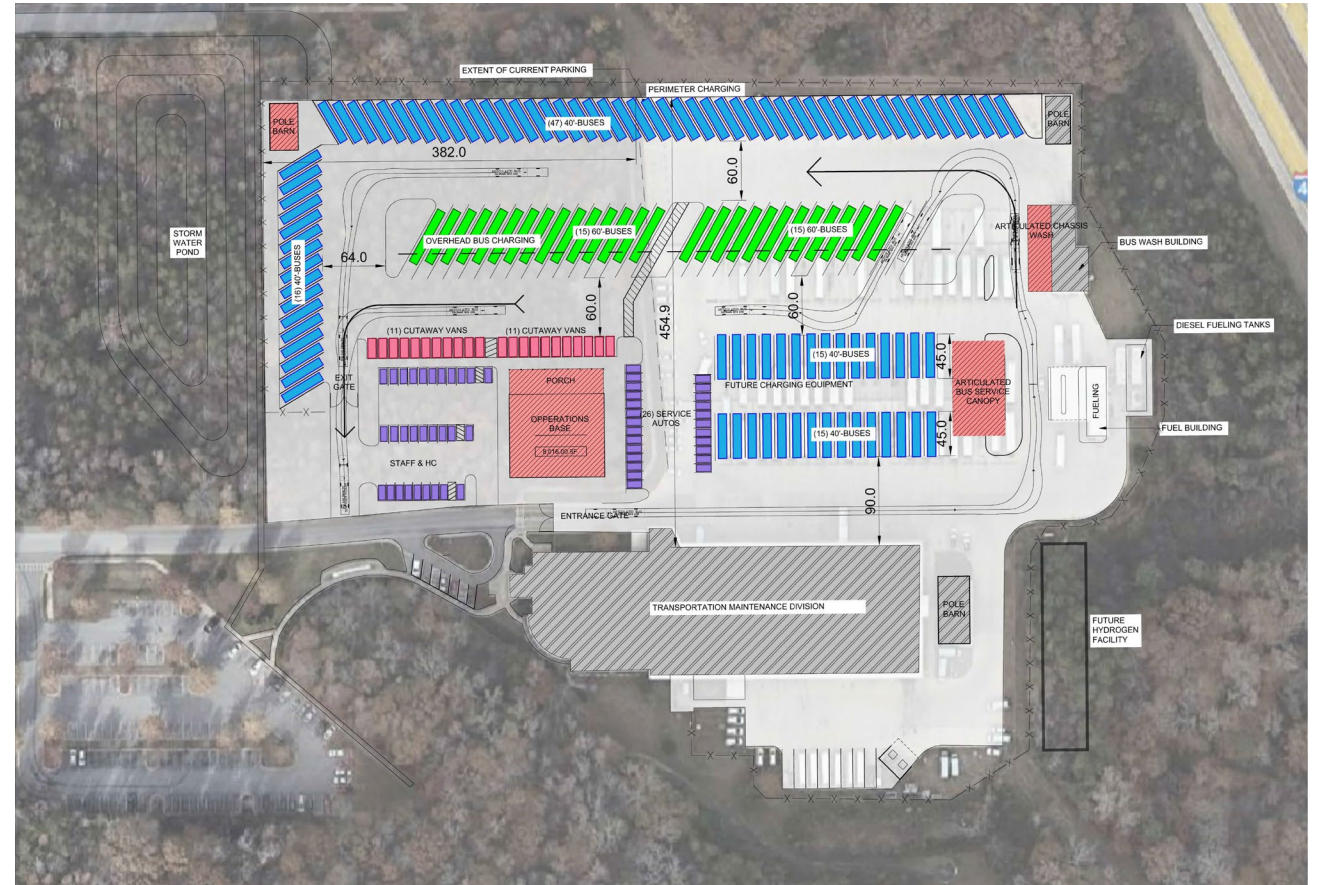
Chapel Hill Transit Facility Expansion

- Phase One: Transit Bus Yard Expansion
- Phase Two: Transit Operations & Maintenance Center
- Phase Three: Transit Access Road
- Phase Four: Town Public Service Facilities



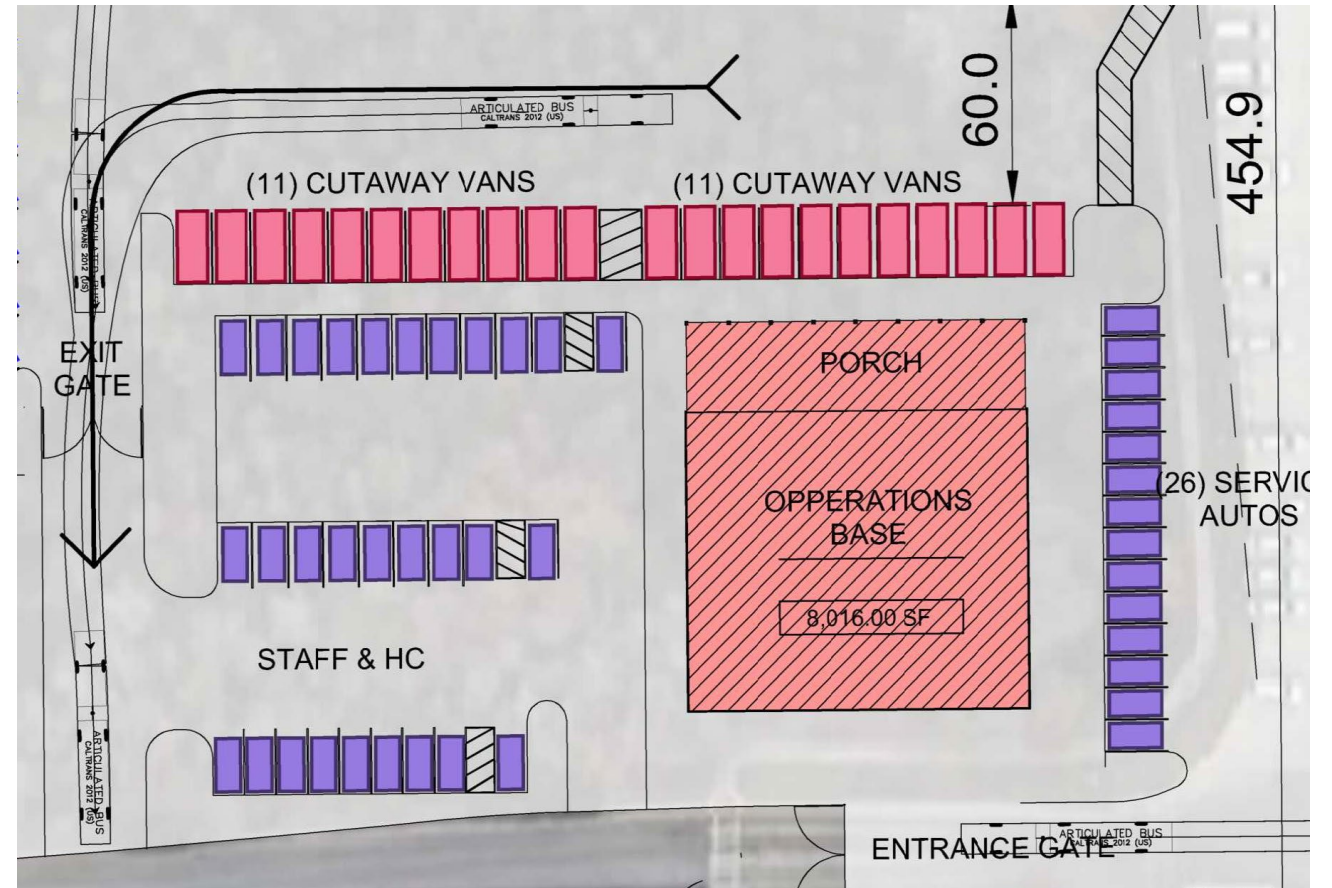
Phase One: Transit Bus Yard Expansion

- Fleet parking for approximately 30 60' buses and additional support vehicles
- Operator Skills Training Area
- Zero-Emissions Infrastructure



Phase Two: Transit Operations & Maintenance Center

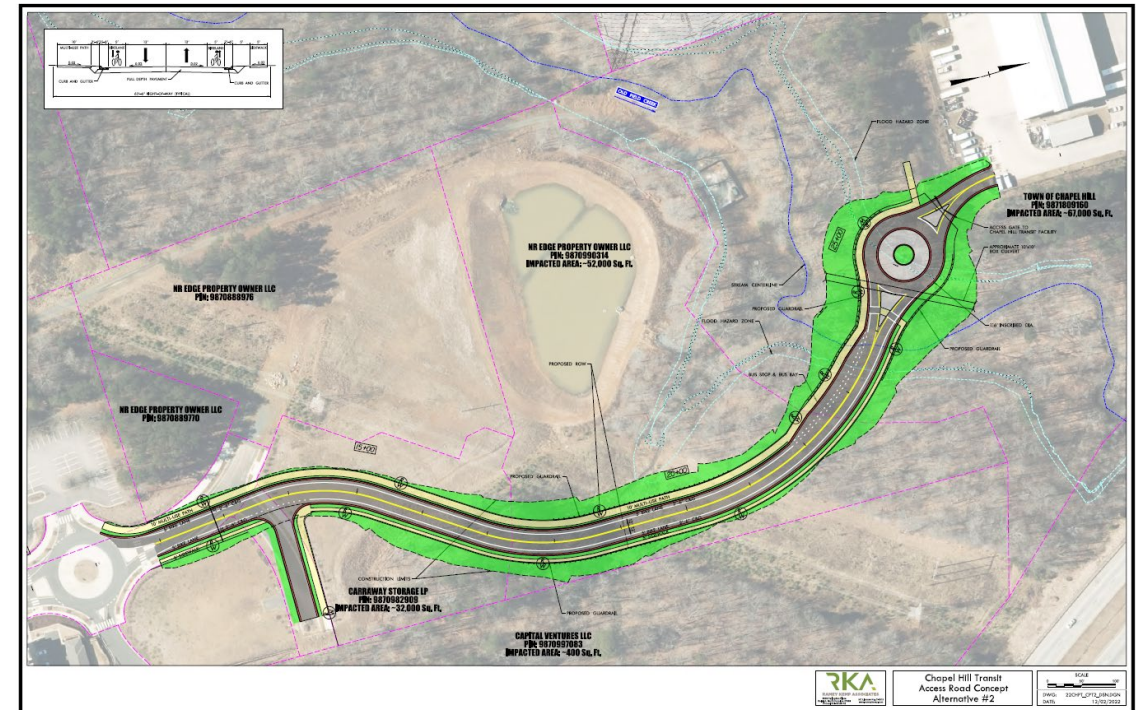
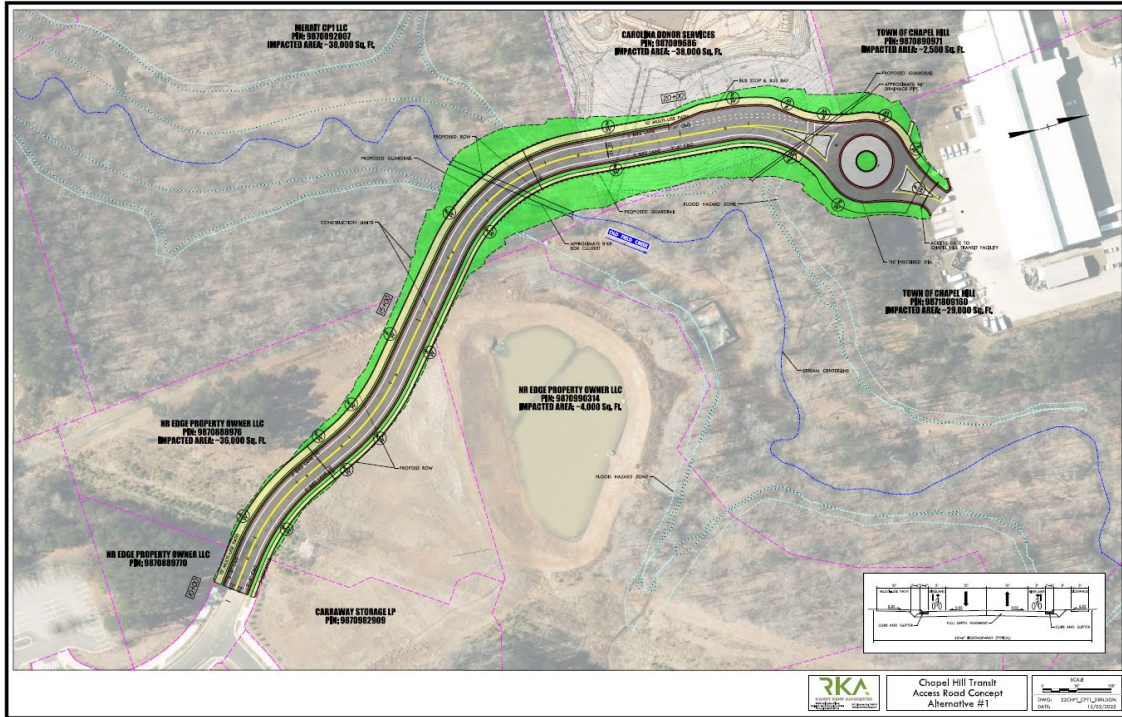
- Two-story Operations Facility
- Maintenance Bays
- Outdoor Space
- Connections to local greenways & trails
- Solar storage area



Phase Three: Transit Access Road

- Secondary entrance to Transit Facility
- Used for:
 - NSBRT
 - Deliveries
 - Local service to Transit Facility, Carolina Donor Services, and Carolina Flex Park





Access Road Alternatives

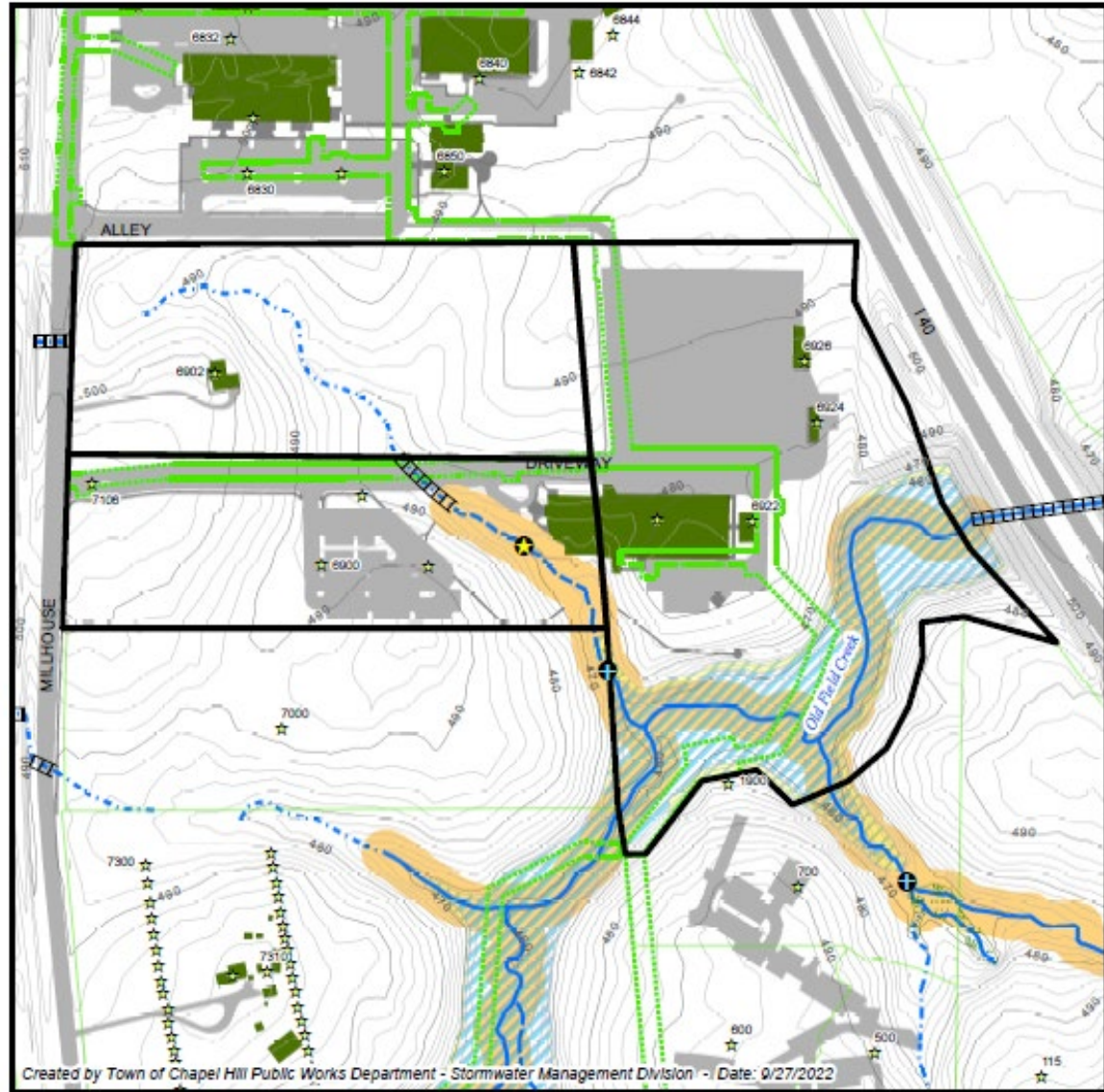
Community Design Commission

- Proposed building details:
 - Approximately 8,016 square feet
 - Two-story facility, with porch and outdoor space
- Will be located next to current facility, set back from the road.
- Landscape buffers will be designed in accordance with the design manual.
- Interested in creating outdoor space for Team Members and connecting to the existing trail network.



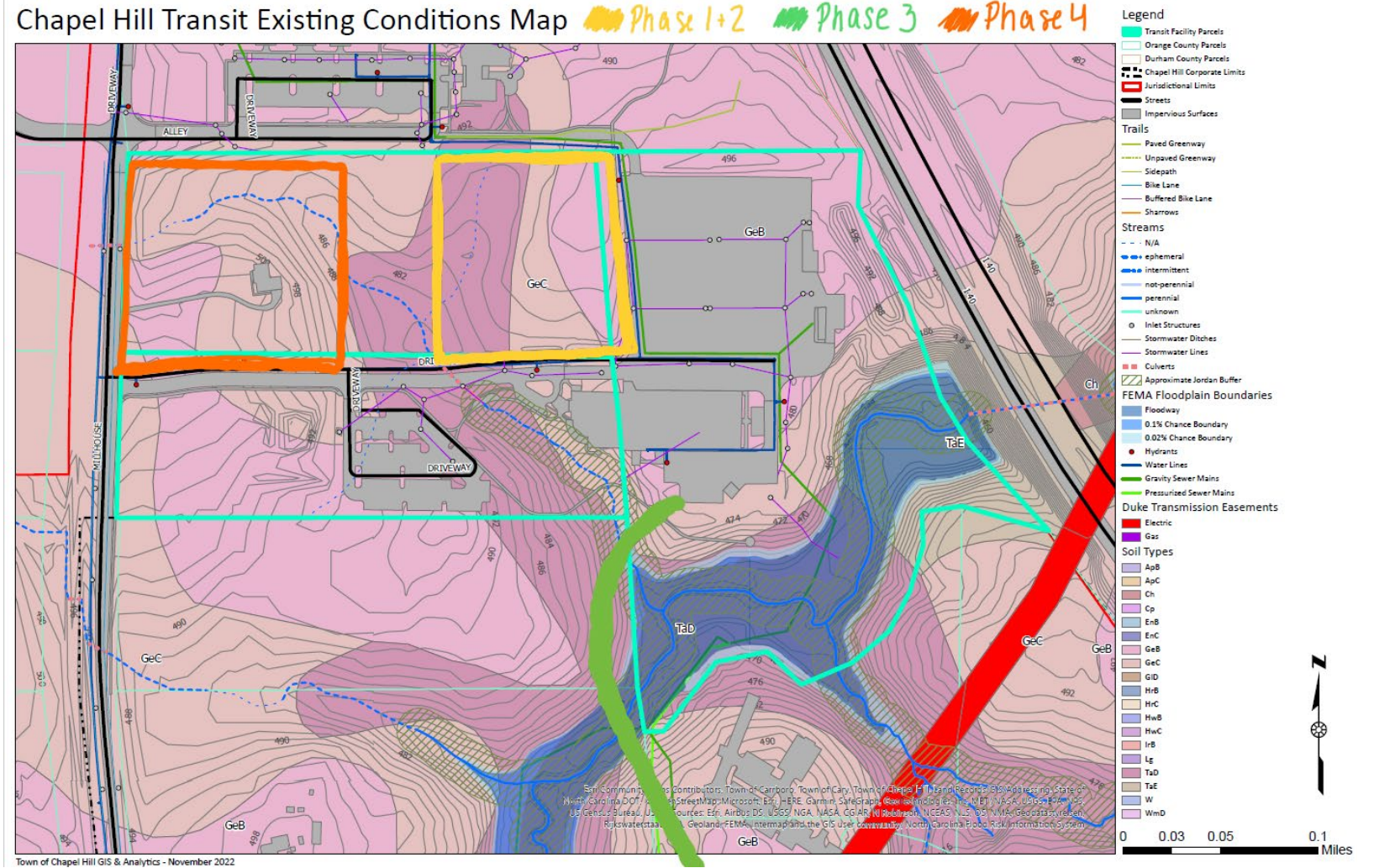
Stormwater Management

- Completed stream determination in September 2022
- Found the following to the south of facility:
 - Old Field Creek with floodway
 - Three main features – one intermittent stream and two perennial streams
- Initial access road plans have identified a bridge to help avoid potential issues
- Additional facilities, water, sewer and other utilities will be provided in accordance with applicable guidelines, standards and regulations.



Stormwater Management

- Existing Conditions Map created in November 2022
- Identifies:
 - Impervious Surfaces
 - Trails
 - Streams
 - FEMA Floodplain Boundaries
 - Duke Transmission Easements
 - Soil Types



A blue-tinted photograph of a bus stop. A bus is stopped at the curb, with its destination sign reading "NS SOUTHERN VILLAGE". Two people are standing at the bus stop. The background shows trees and a building.

Contact

Katy Fontaine, Project Manager
kfontaine@townofchapelhill.org
919-969-4957