



Orange County  
Partnership to  
End Homelessness

Chapel Hill Town Council

---

March 8, 2023

Draft


What do housing crises look like?

Drift

**Unstable Housing**  
*(2+ weeks of secured housing)*



**At risk of homelessness**  
*(Less than 2 weeks of stable housing OR less than 2 weeks experiencing homelessness)*



**Experiencing homelessness**  
*(2+ weeks of homelessness or not diverted)*



**Financial Assistance**  
Eviction and homelessness prevention via Emergency Housing Assistance (EHA)



**Legal help with evictions**



**Fair housing/ Discrimination**





**Other Resources**




**Homelessness Diversion**

Flexible funding available  
Structured conversation  
20% find other places to stay

**Emergency Response**



In-County Shelter  
Out of County shelter  
Fleeing Domestic Violence/ Sexual Assault  
Cold Weather Cots during winter months

**Permanent Housing Referrals**



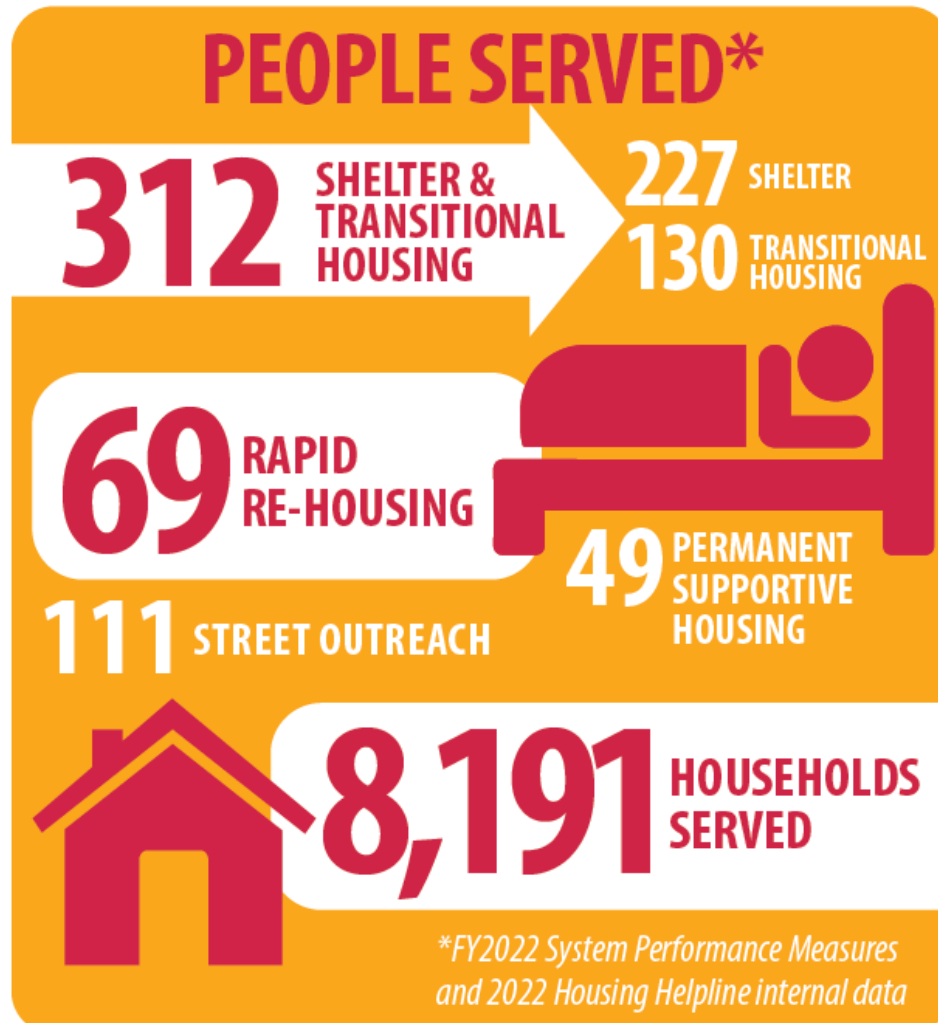
**HOME committee by name list**

Housing Choice Vouchers  
Permanent Supportive Housing  
Rapid Re-housing  
Veterans programs  
Supportive services

**Stable Housing**



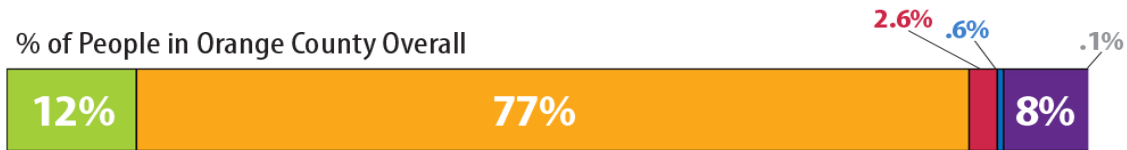
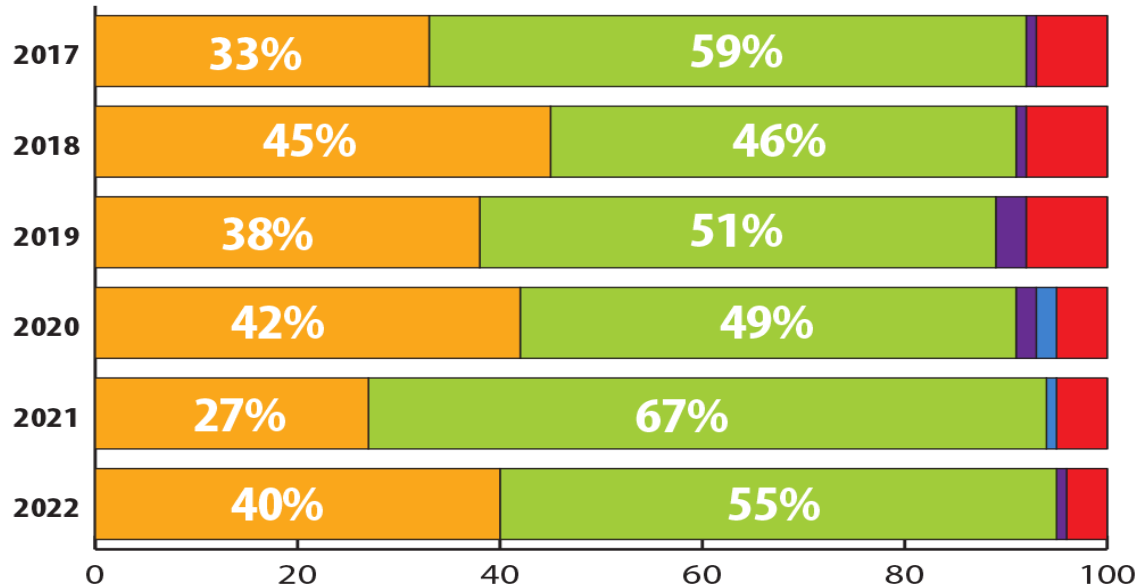
# Orange County Homeless Service System



Draft

# Racial disparity continues – Who's experiencing homelessness in Orange County?

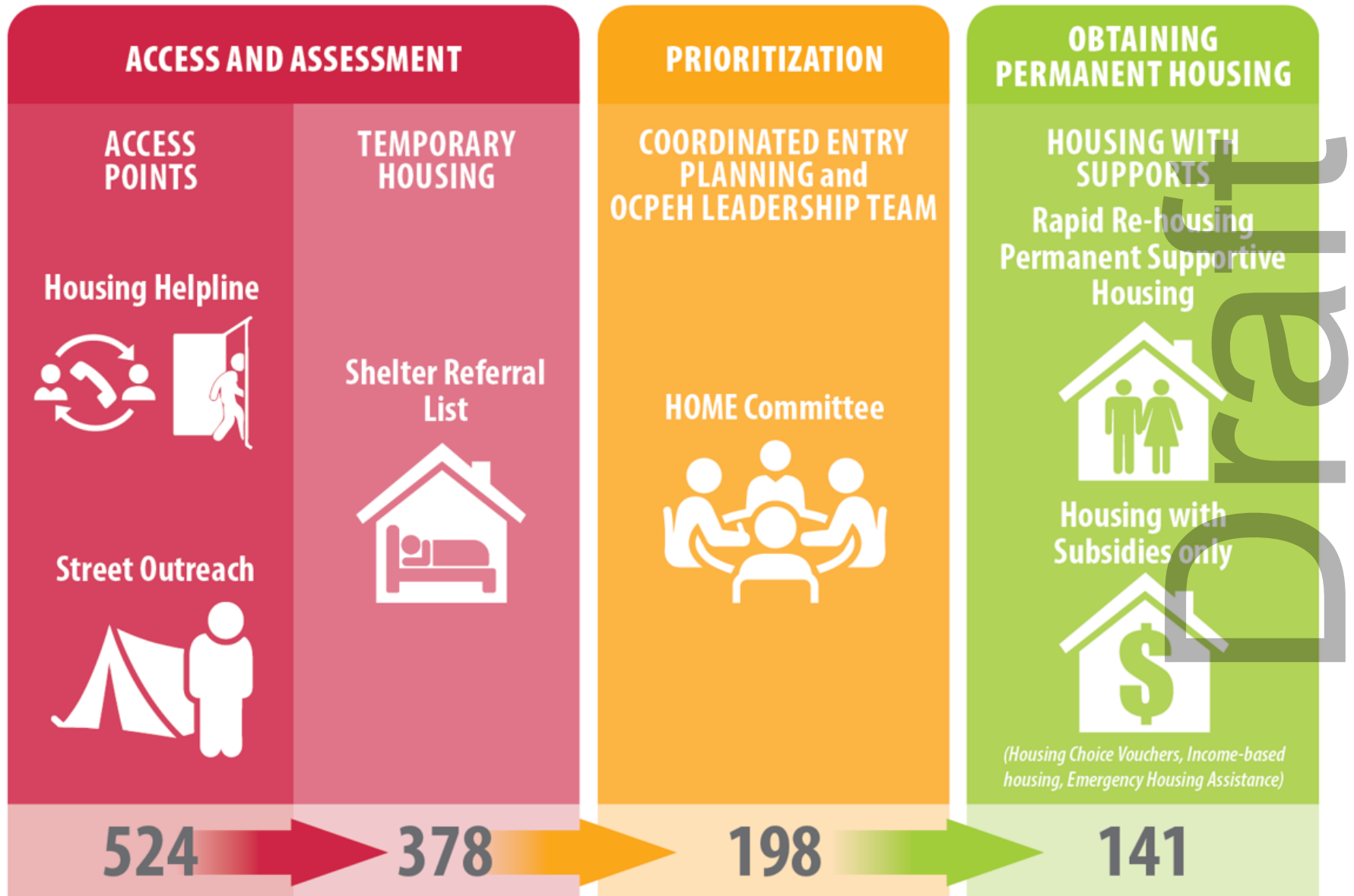
## RACE



■ Black or African-American 
 ■ White 
 ■ Multiple Races 
 ■ American Indian or Alaska Native 
 ■ Asian 
 ■ Native Hawaiian or Other Pacific Islander

Draft

# Pathways into Housing



# Everyone has a Role

- **Street Outreach**

- Served 124 people
- 64% male-identified; 34% female-identified
- 50% Black/AA; 35% white
- 48% living with MH; 36% Physical disability
- 31% earn \$1000+ monthly



# Everyone has a Role

- **Rapid Re-housing**

- Served 45 Households
- 61% male-identified; 39% female-identified
- 59% Black/AA; 33% white
- 64% living with 1+ health conditions (MH, Physical, Chronic health)
- 50% have no income at entry





# Everyone has a Role

- **Permanent Supportive Housing**
  - Served 19 Households
  - 50% male-identified; 50% female-identified
  - 40% Black/AA; 40% white
  - 70% living with 1+ health conditions (MH, Physical, Chronic health)
  - 41% have no income at entry



Orange

# Successes

Draft

# Increasing Access

- Adding access sites
- Adding Street Outreach staff
- Coordinating across sectors



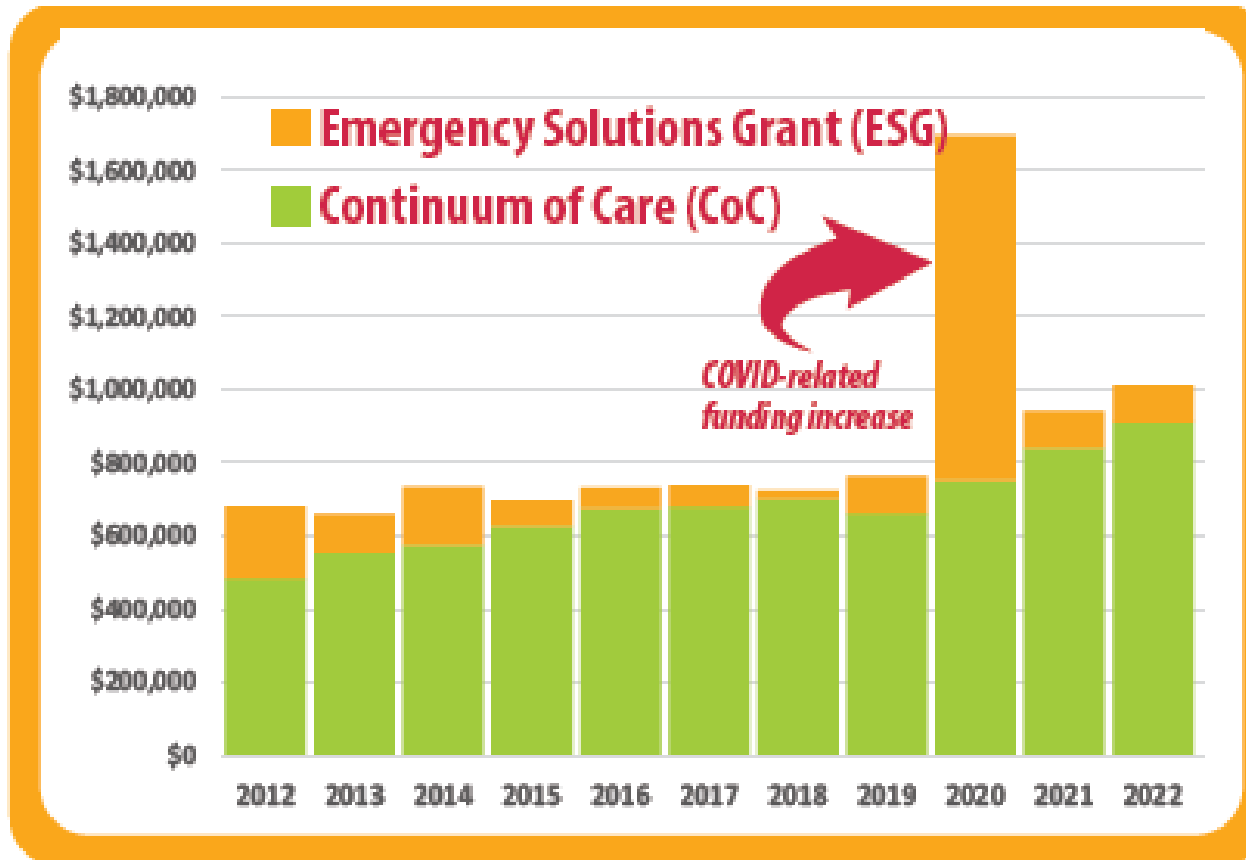
# Increasing Collaboration

- Bringing more partners to the table
- Improved processes for feedback from People With Lived Experience
- Cross-CoC pilot to improve Housing First programs



Draft

# Increasing resources – Applied for over \$1 million in HUD homeless funds in 2022



Draft

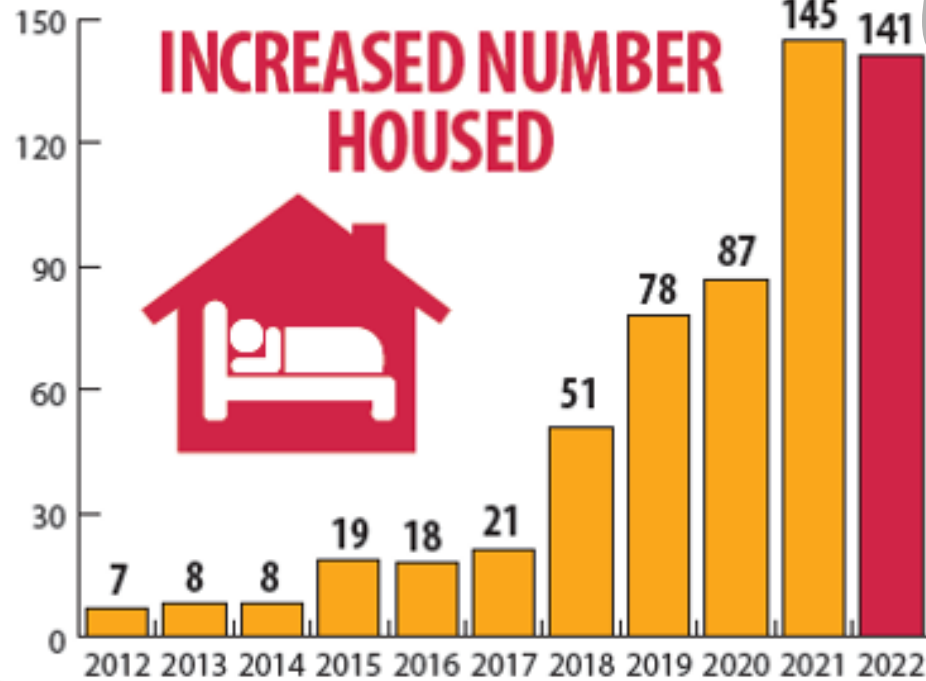
# Increasing Housing

**141**

VULNERABLE  
HOUSEHOLDS  
HOUSED IN 2022

**583**

HOUSED  
SINCE 2012

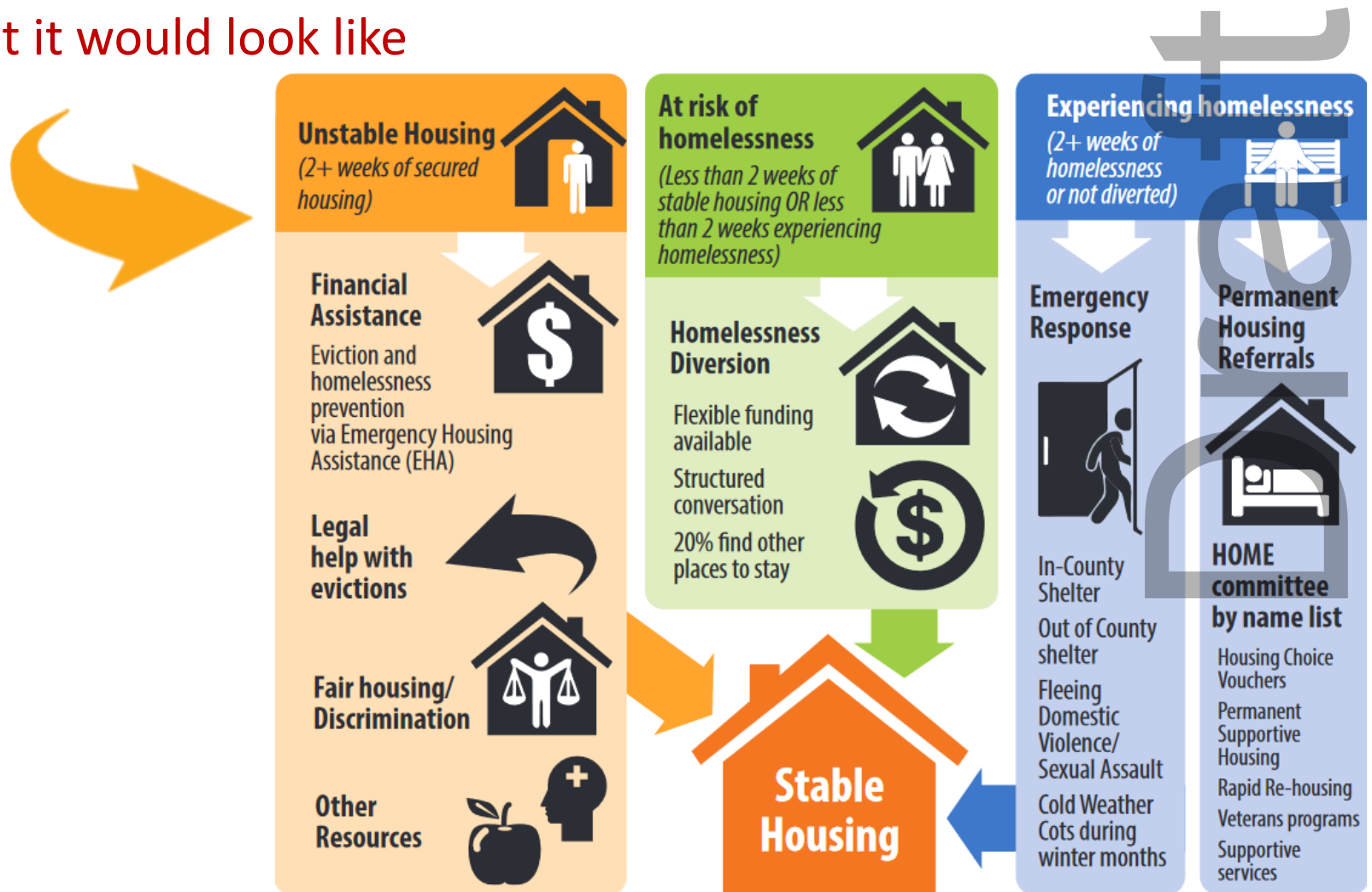


# The Path Forward

Draft

# We can end homelessness in Orange County

- Other communities are doing this/have done it
- What it would look like





# We can end homelessness by filling the homeless system gaps



We can end homelessness by closing the 15 current system gaps.

## GAPS

	<b>HOUSING</b>	Income-Based Rental Units Housing Locator Furniture and Household goods Rapid Re-Housing Landlord Incentives Youth Housing Permanent Supportive Housing
	<b>SERVICES – TEMP. HOUSING</b>	Accessible, housing-focused shelter Medical Respite Beds Bridge Housing
	<b>SERVICES – CONNECTIONS</b>	Housing Helpline staffing Integrated Service Center Crisis/Diversion Facility
	<b>SERVICES – DIGNITY</b>	24 hour bathrooms Memorial Service Funding

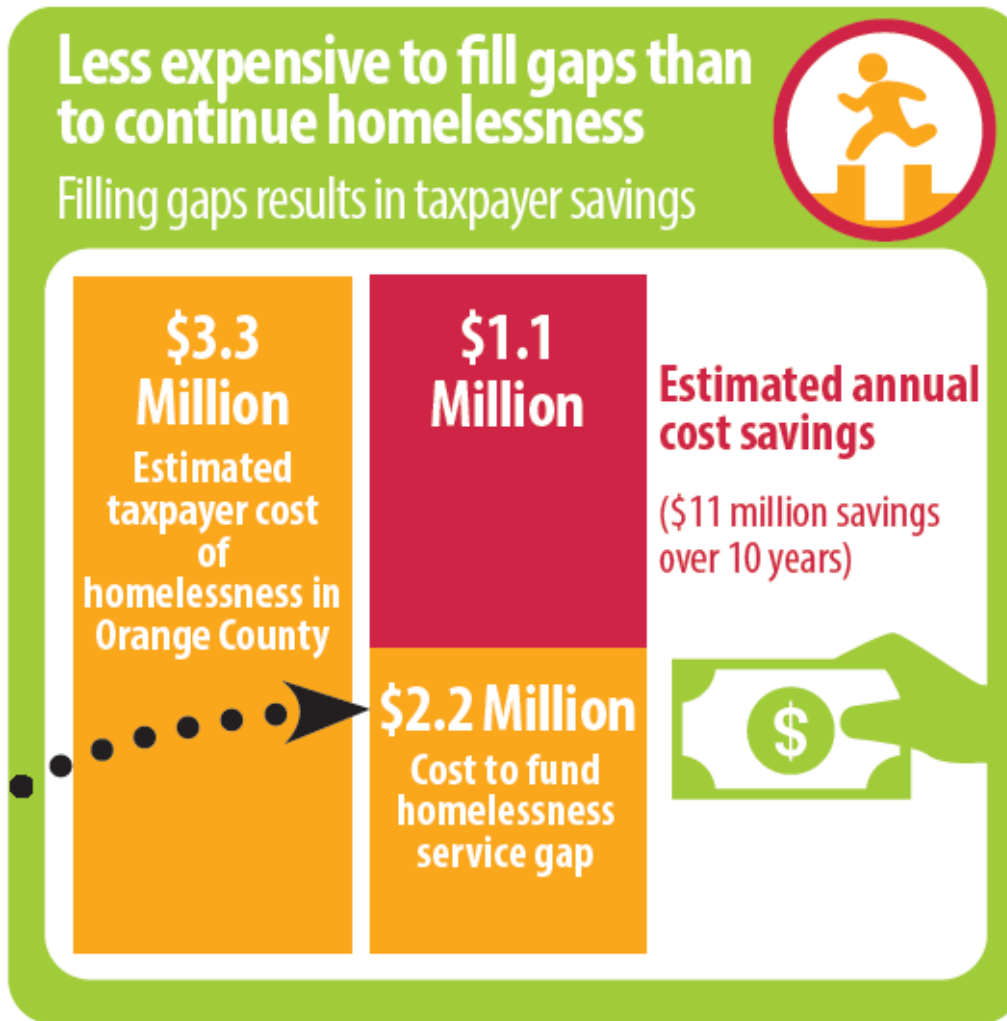
An additional \$2.2 million needed annually for gap funding

Draft



Orange County  
Partnership to  
End Homelessness

# It is less expensive to fill gaps than to continue homelessness



Draft

# Please let me know how I can help

- Rachel Waltz
- [rwaltz@orangecountync.gov](mailto:rwaltz@orangecountync.gov)
- 919.245.2496

Draft