

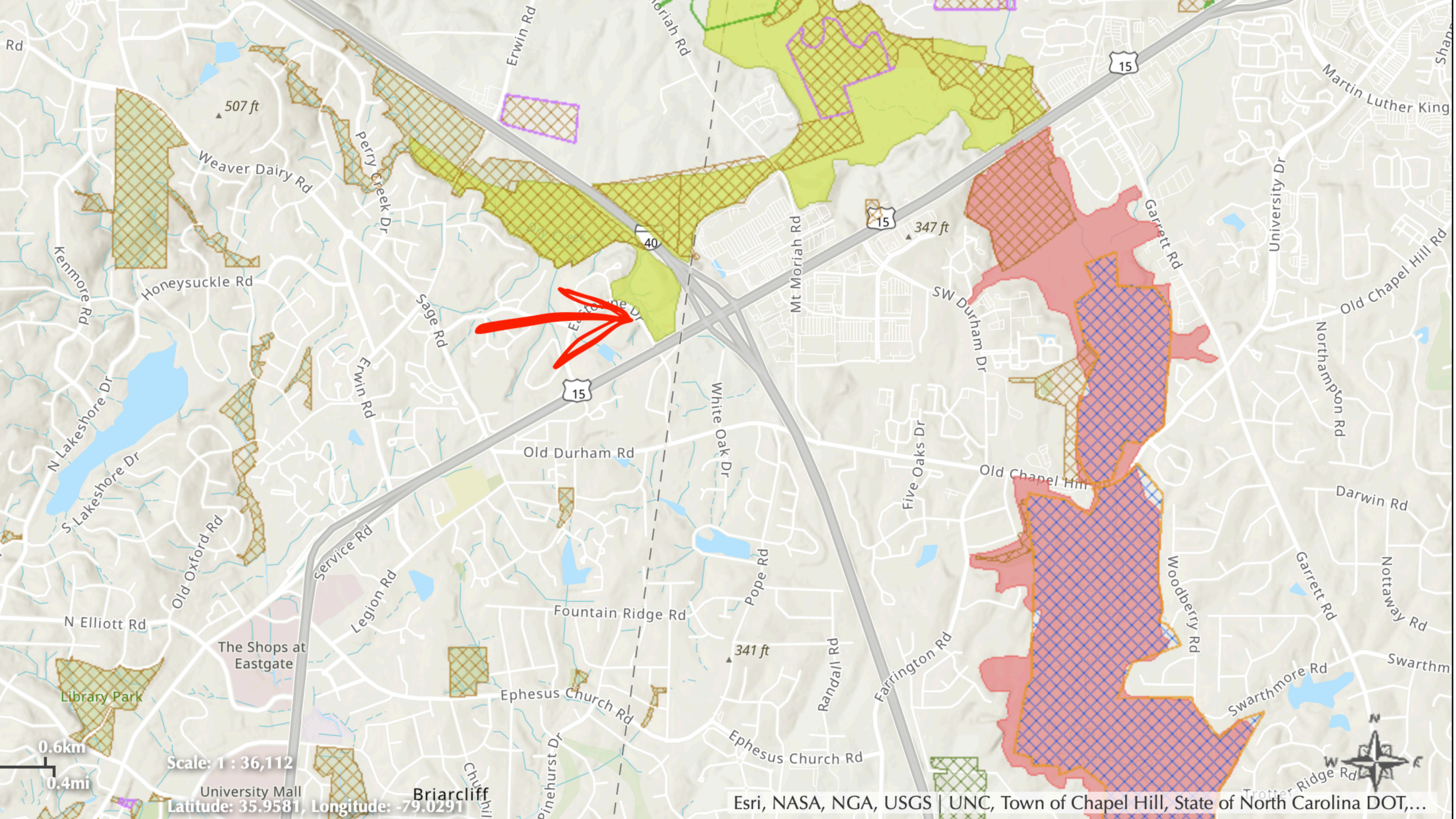
# Eastowne Woods

Natural Conservation Area Effort



# Background

- ◆ Unusually mature old-growth Hickory and Oak Forest.
- ◆ Part of the Dry Creek and Mount Moriah Bottomland natural area, which is the last link remaining between Jordan Lake and Duke Forest. (Critical wildlife corridor)

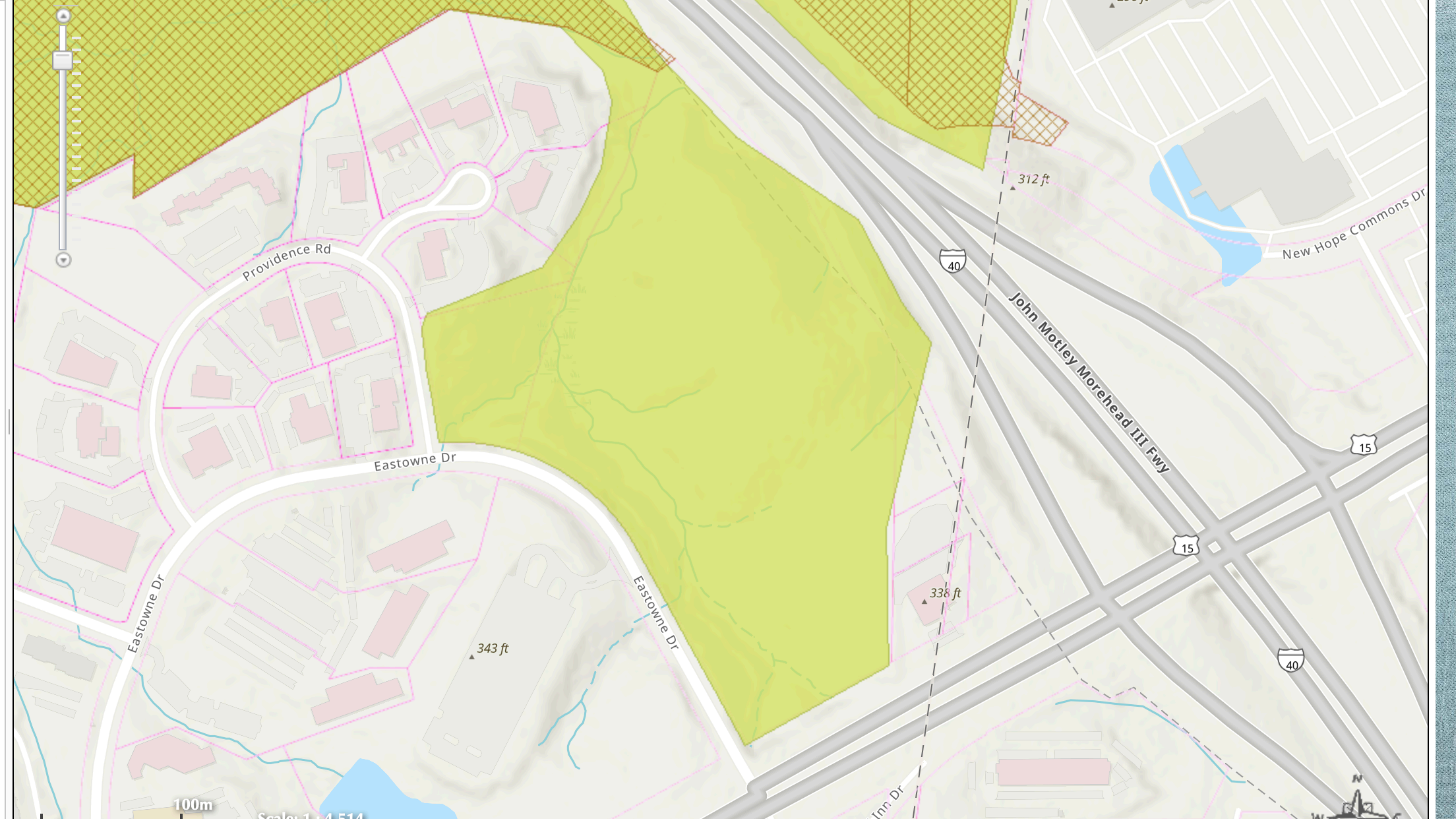


Scale: 1 : 36,112

University Mall  
Latitude: 35.9581, Longitude: -79.0291

Briarcliff

Esri, NASA, NGA, USGS | UNC, Town of Chapel Hill, State of North Carolina DOT,...



Providence Rd

Eastowne Dr

John Motley Morehead III Fwy

New Hope Commons Dr

312 ft

40

15

15

40

338 ft

343 ft

Eastowne Dr

Eastowne Dr

100m

Scale: 1 : 4,514

N



Old Stearns Drive  
Eastowne Drive

Eastowne Drive

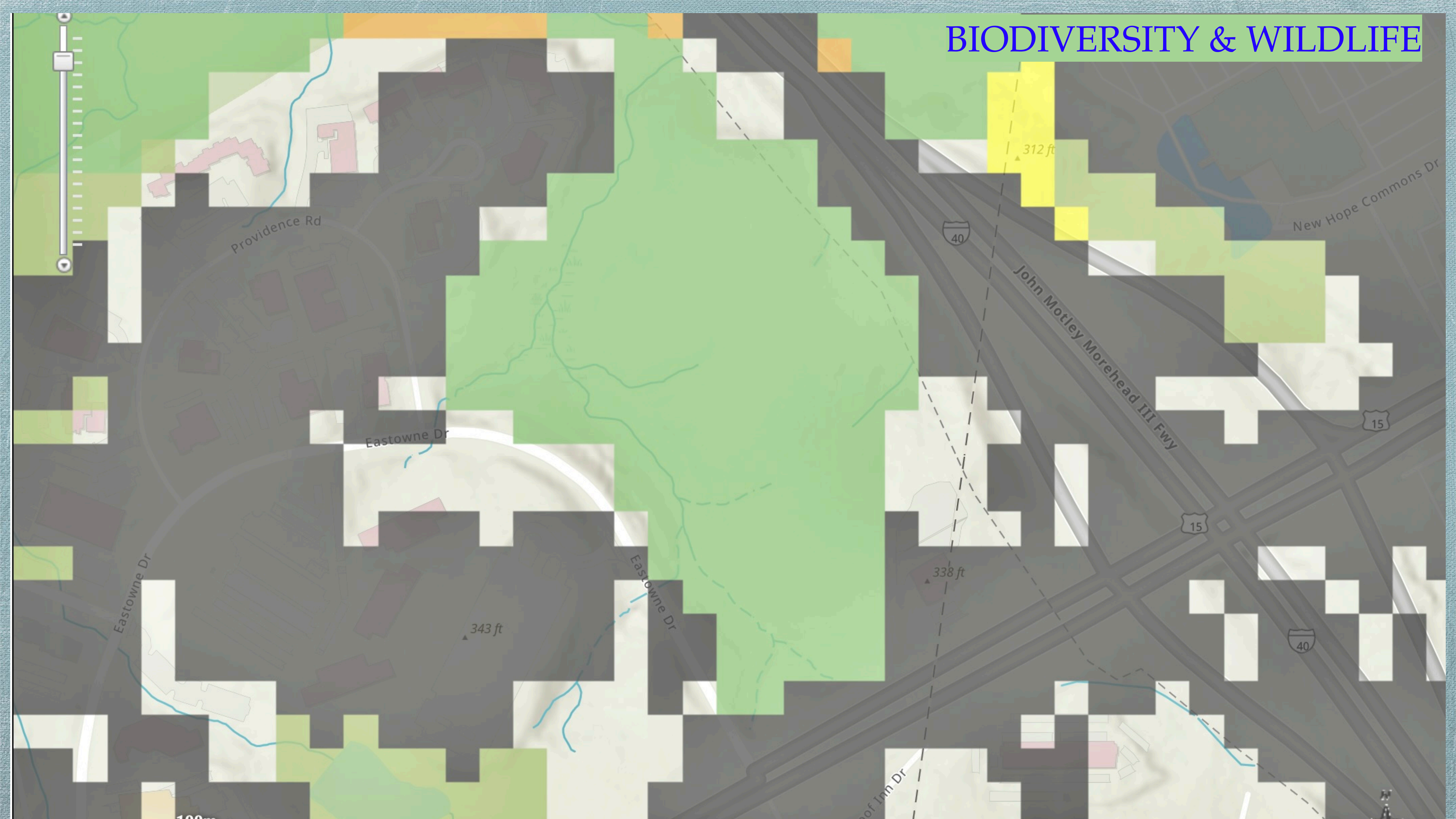
I-40

15-501

# Background

- ◆ Town of Chapel Hill requested a site survey that was conducted August 7, 2019
- ◆ Determined that : “This tract is worthy of protection in its natural condition, through whatever means are feasible. The tract adjoins conservation lands owned by the Town of Chapel Hill ... to a larger network of conservation lands”

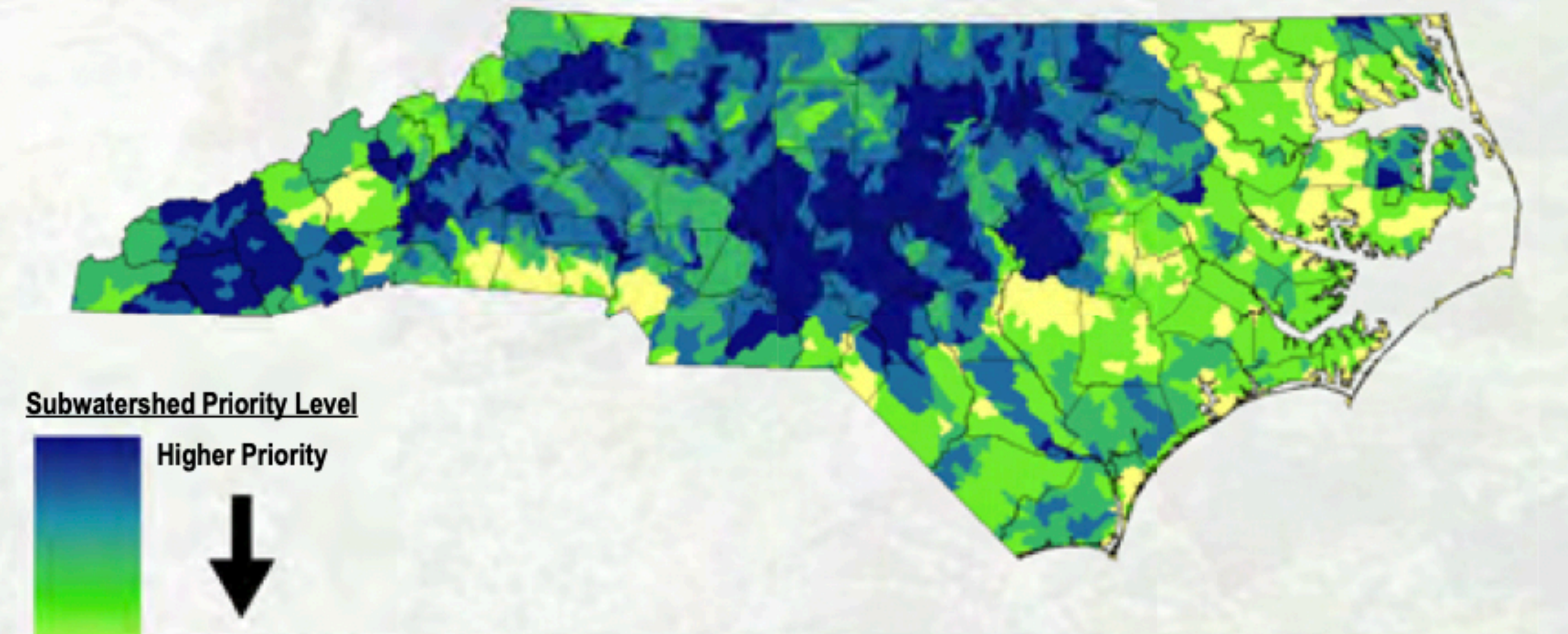
# BIODIVERSITY & WILDLIFE



## Priority Forest Watersheds for Water Quality & Quantity

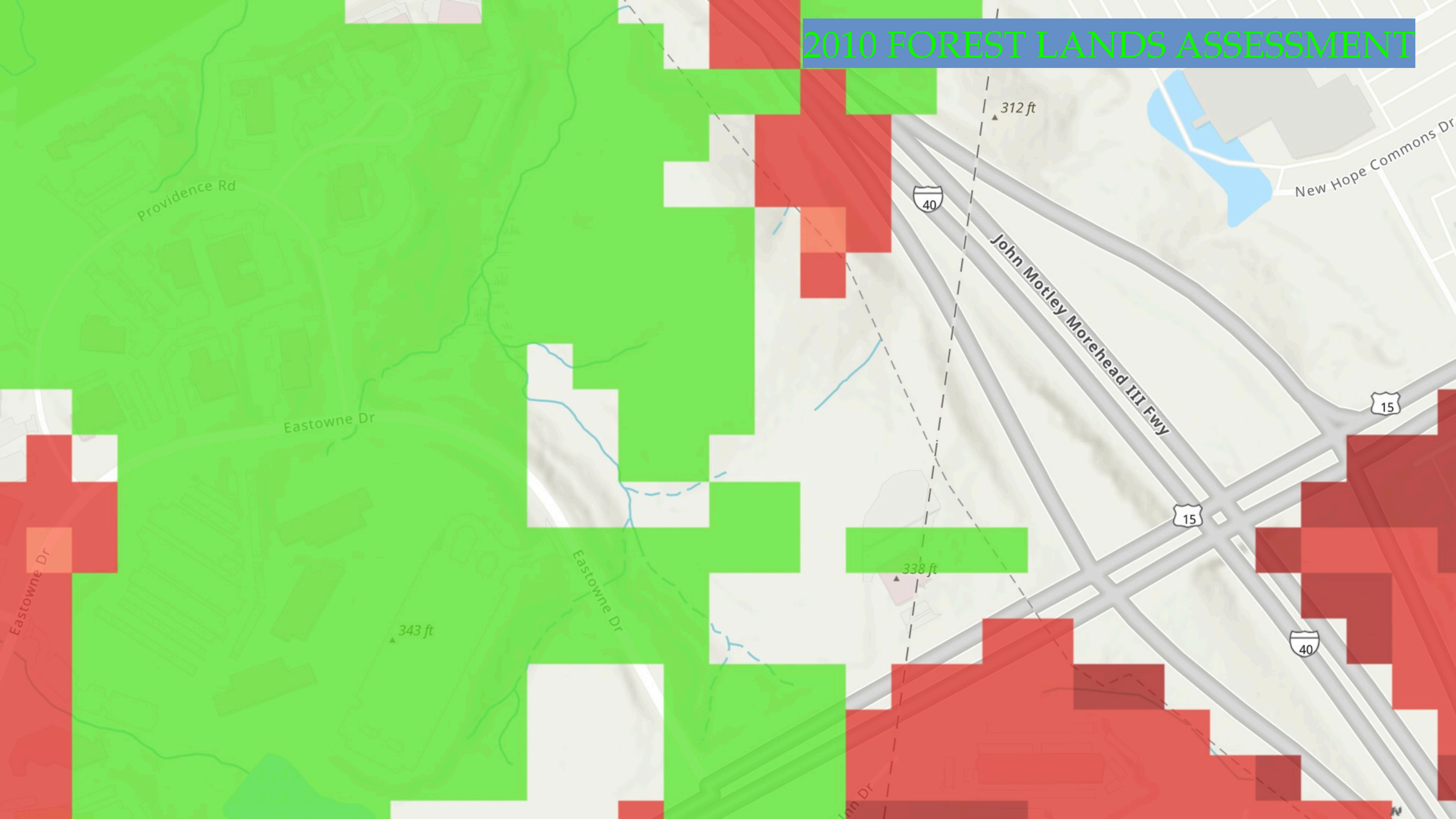
The NCFS conducted a spatial analysis to *identify watersheds where forest conservation and management are important to the future supply of clean municipal drinking water, or where restoration or protection activities will improve or restore a critical water source*. This analysis used five existing datasets combined through a weighted overlay. The five datasets used are listed below, ranked in order of their weighting:

1. N.C. Conservation Planning Tool – Water Service Assessment
2. N.C. Rural Economic Development Center – Forecasted Water Demand
3. Southern Forest Lands Assessment – Forestland Layer
4. N.C. Source Water Assessment and Protection Areas
5. Southern Forest Lands Assessment – Development Layer

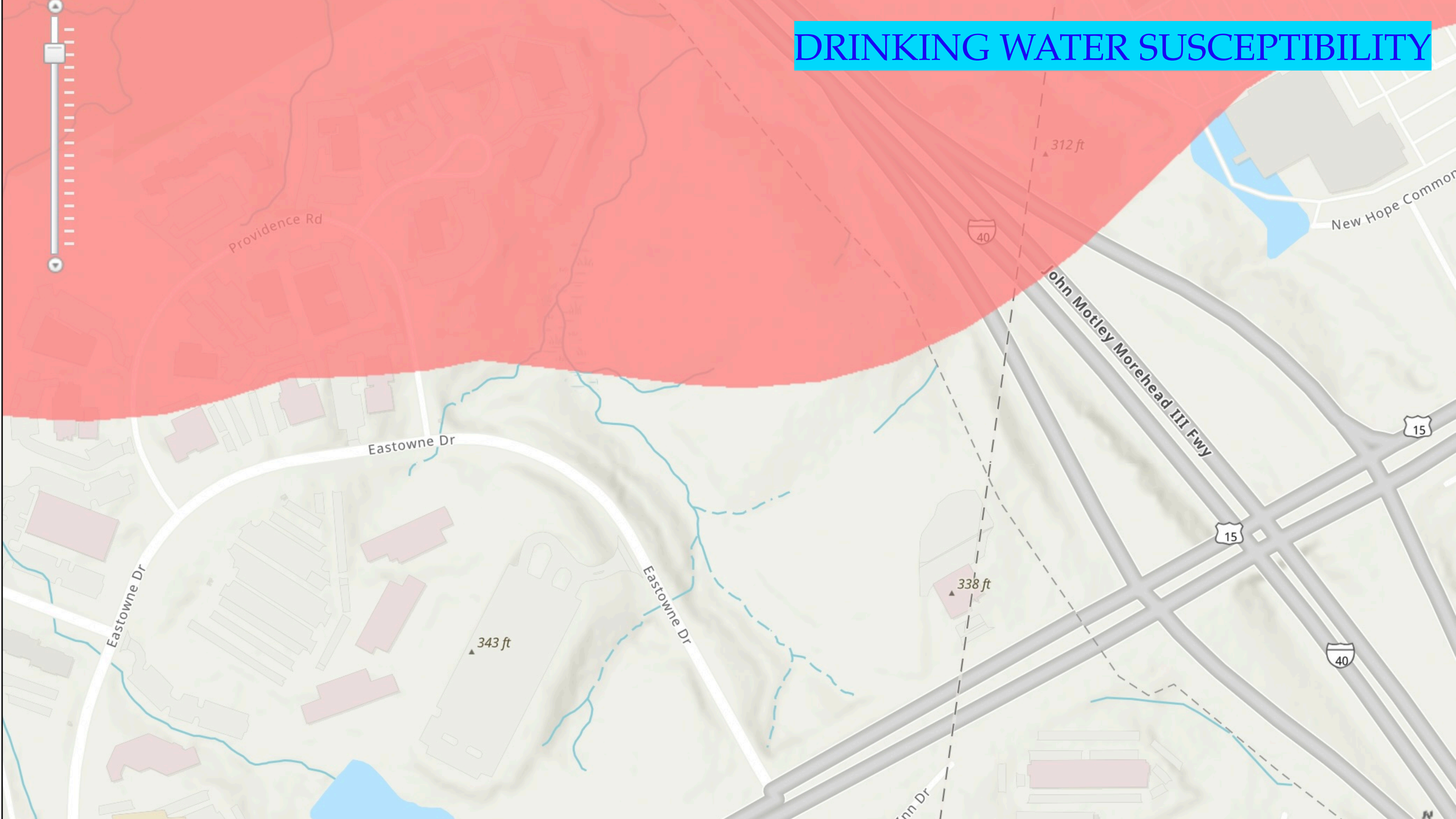




# 2010 FOREST LANDS ASSESSMENT



# DRINKING WATER SUSCEPTIBILITY





CONSTRUCTION AREA  
DO NOT ENTER  
SEEK AN ALTERNATE  
ROUTE AT ALL TIMES

UNC

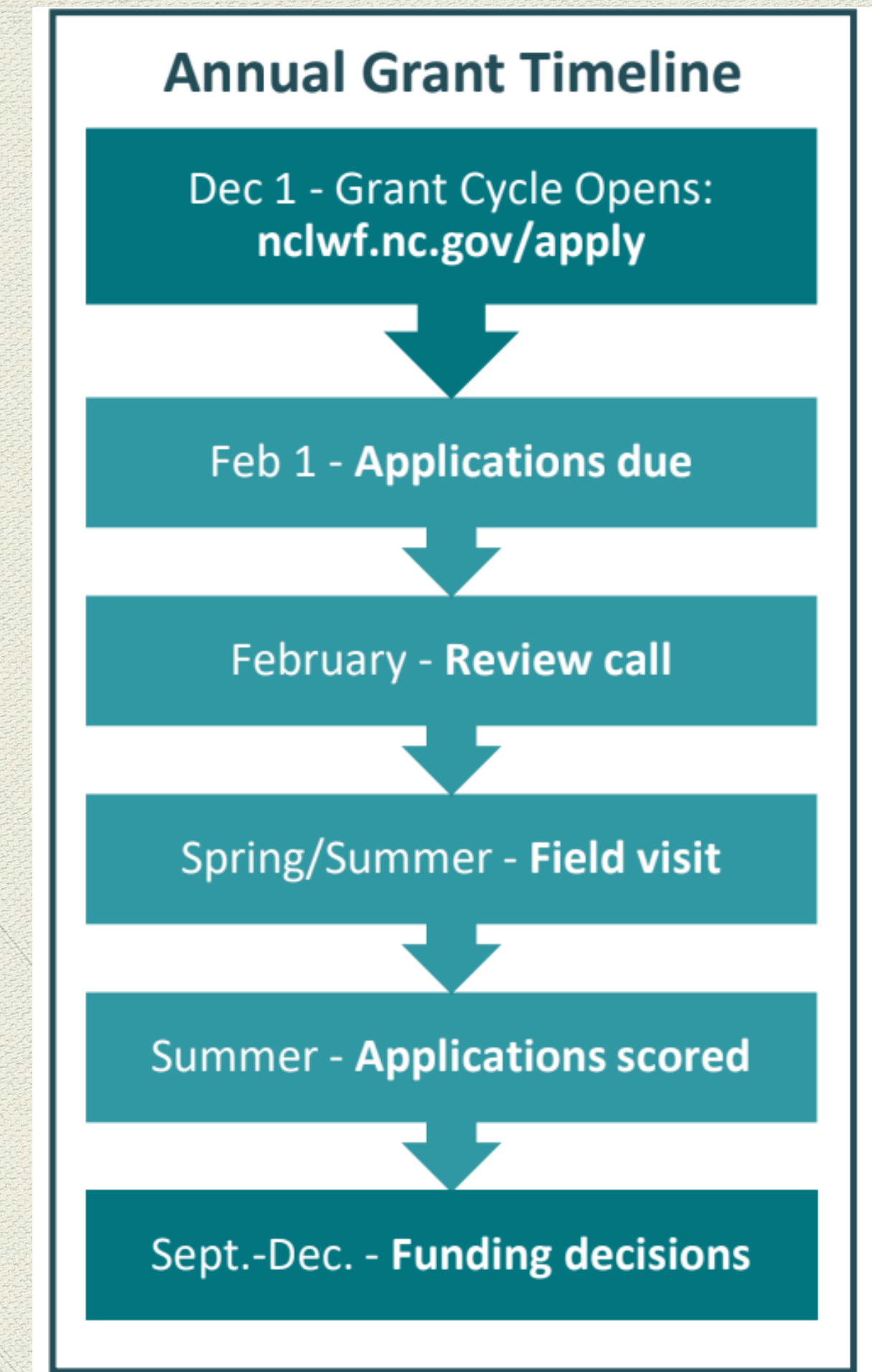


# ESAB RESPONSIBILITIES

- ◆ Sec 2. -174. Duties and Powers
  - ◆ 1. Make recommendations to council regarding development plans
  - ◆ 4. Advocate for managing environmental resources in a way that reflects the community's values
  - ◆ 6. Maintain and improve current environmental protections
  - ◆ 7. Identify Chapel Hill resources for further protection (i.e. natural heritage areas)

# NC Land and Water Fund

- ◆ ESAB Resolution to Town Council:
- ◆ Partner with UNC Health Care to apply for the North Carolina Land and Water Fund Acquisition Grant
- ◆ Establish the Hickory-Oak Forest as a Conservation Area



## LAND ACQUISITION

Land acquisition projects for Riparian Greenways, Riparian Buffers, Natural Heritage Communities, Military Buffers, and Cultural/Historic Sites are intended to: acquire land for riparian buffers to protect surface waters; establish a network of riparian greenways; provide buffers beneficial to the military mission; acquire land that represents the ecological diversity of North Carolina as mapped by the Natural Heritage Program; and, to conserve lands that protect historic or cultural sites of significant importance. It is required that a permanent conservation agreement will be recorded on property purchased using NCLWF funds and on property used as match. Agreements on property purchased with NCLWF funds are typically held by the state. Agreements on matching tracts are typically held by conservation non-profits or local governments.

<b>Resource significance</b>	<b>58%</b>
<b>Military buffers</b>	5%
<b>Other public benefits</b>	7%
<b>Readiness</b>	10%
<b>Match value</b>	20%