

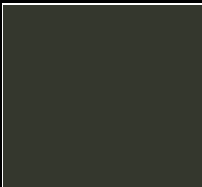


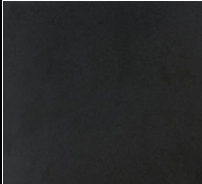


**TOWN OF CHAPEL HILL**  
COMMUNITY DESIGN COMMISSION SUBMITTAL

**P O S T I N O**

# DETAILED BUILDING ELEVATIONS

a.

TAG NUMBER	LOCATION	DESCRIPTION	MANUFACTURER	IMAGE
<b>MASONRY</b>				
CO-02	PATIO SLAB	PENETRATING STAIN COLOR: BLACK  CLEAR SEAL - 20% UVR	SURKCOAT	 Black
WD-1	HORIZONTAL WOOD VENEER	<b>EXISTING</b>  PRODEX PHENOLIC PANEL COLOR: RUSTIK	PRODEMA	
MP-2	METAL PANEL SYSTEM	<b>EXISTING</b>  PAINTED ALUMINUM SYSTEM COLOR: MATTE BLACK	IMETCO	
PT-01	WALL PAINT	<b>EXISTING BRICK VENEER</b>  IRON ORE 7069 FLAT	SHERWIN WILLIAMS	
PT-02	WALL PRIMER MURAL	MULTI-PURPOSE EXTERIOR LATEX PRIMER/SEALER	SHERWIN WILLIAMS	
MT-1	STOREFRONT	CHARCOAL	ARCADIA	

# DETAILED BUILDING ELEVATIONS

b.



NORTH FACADE ELEVATION

N.T.S.



EAST FACADE ELEVATION

N.T.S.

# DETAILED BUILDING ELEVATIONS

C.



FRONT



PATIO



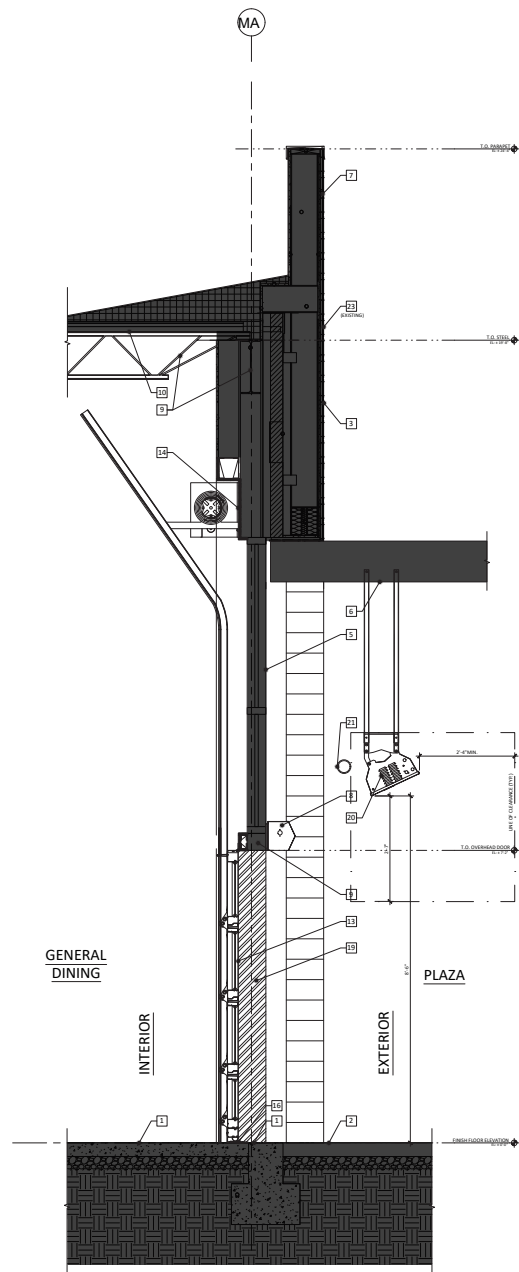
CORNER



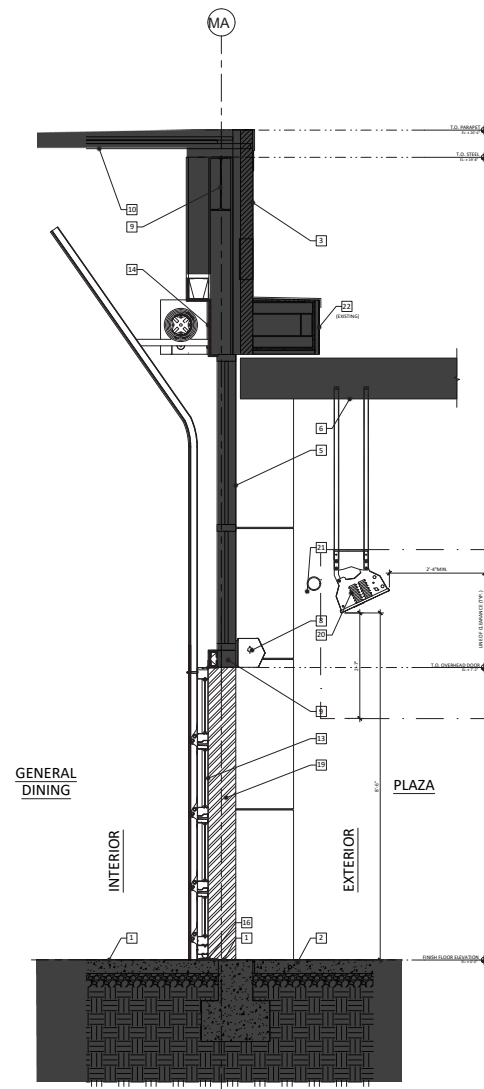
PATIO

# DETAILED BUILDING ELEVATIONS

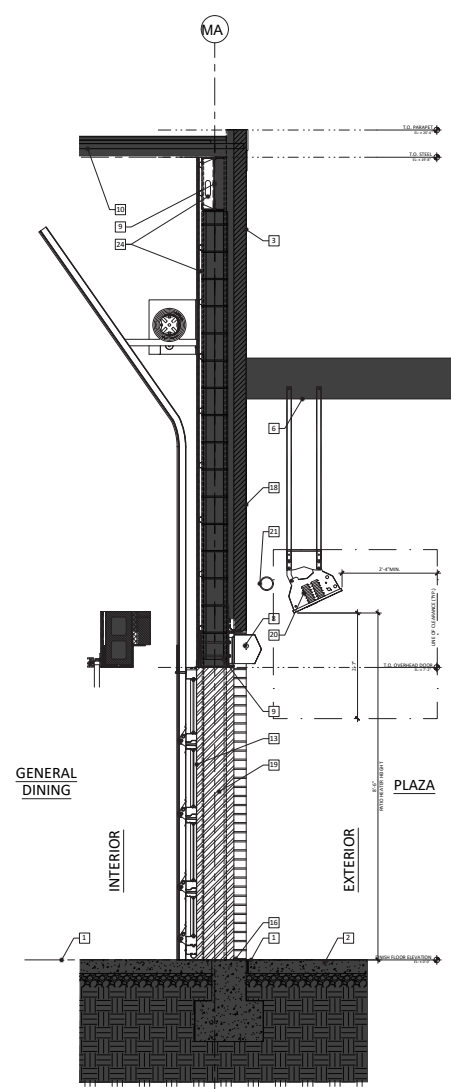
d.



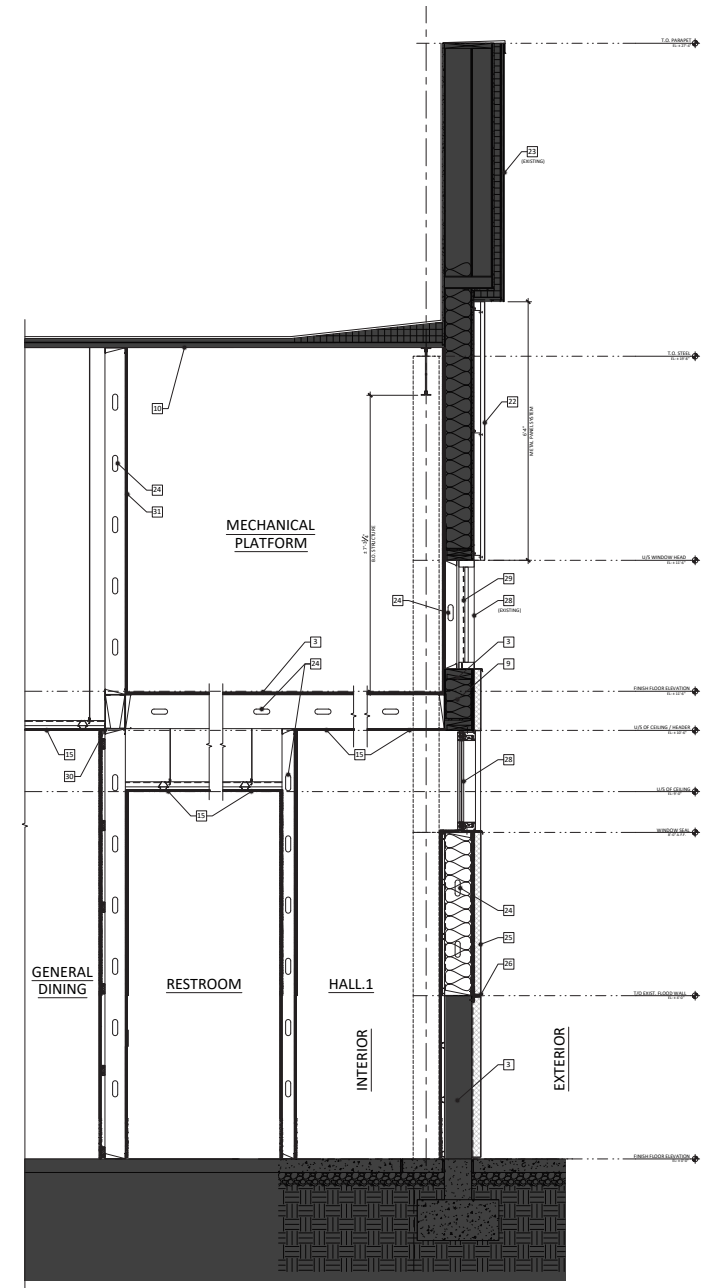
1 WALL SECTION @ SUITE C6  
SCALE: 3/4" = 1'-0"



2 WALL SECTION @ SUITE C6  
SCALE: 3/4" = 1'-0"



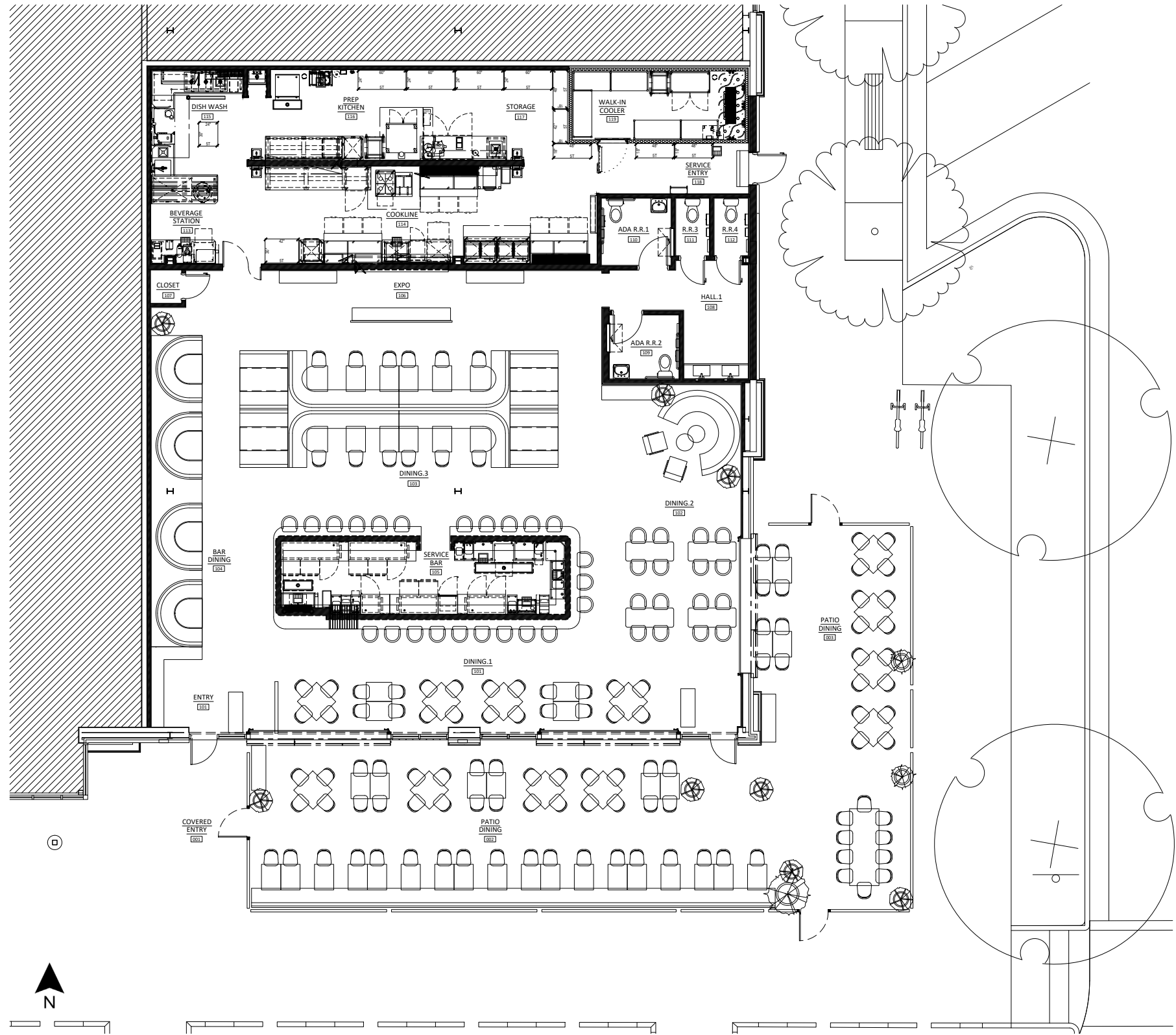
1 WALL SECTION @ SUITE C6  
SCALE: 3/4" = 1'-0"



2 WALL SECTION @ SUITE C6  
SCALE: 3/4" = 1'-0"

# DETAILED BUILDING ELEVATIONS

e.

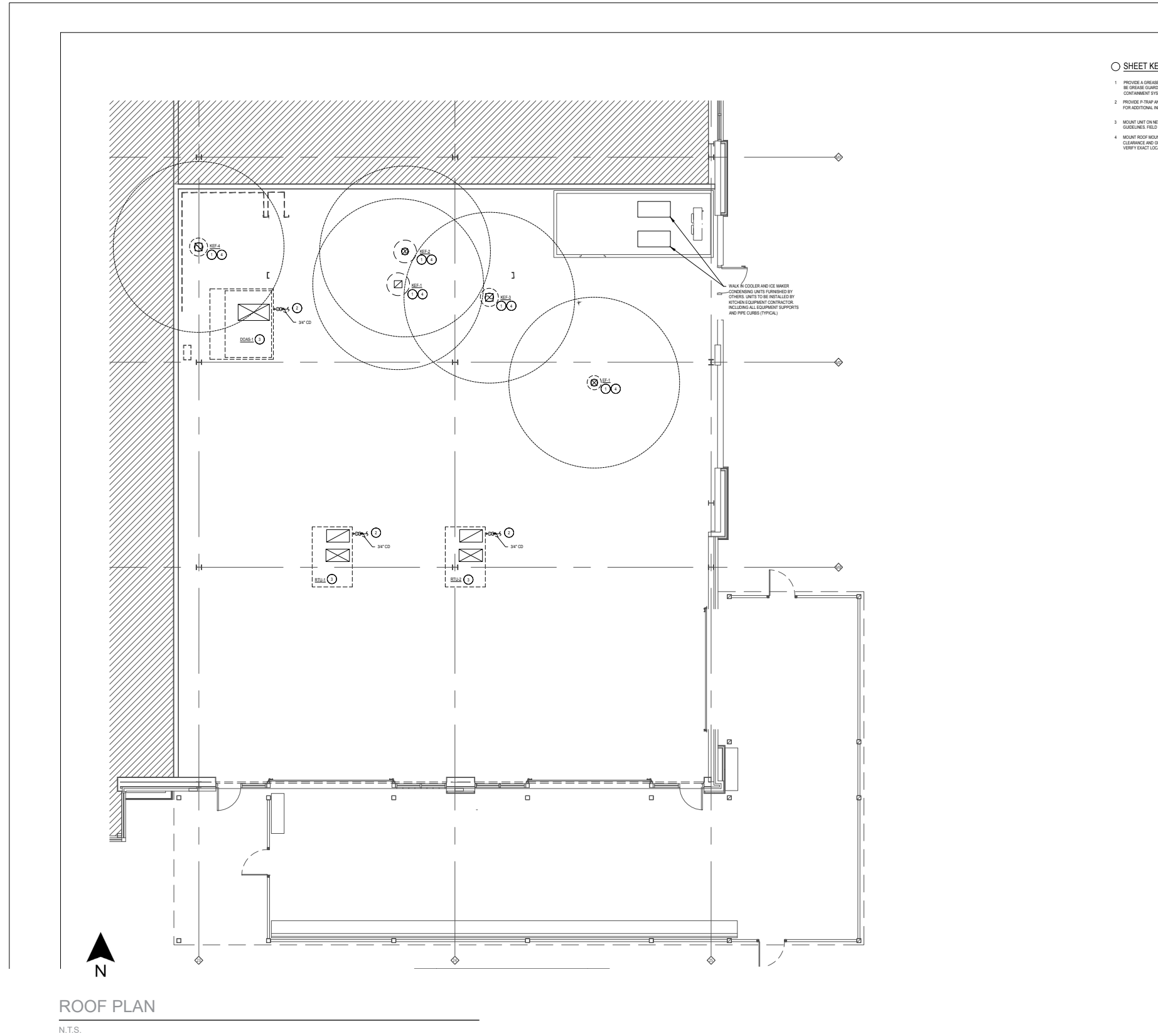


FLOOR PLAN

N.T.S.

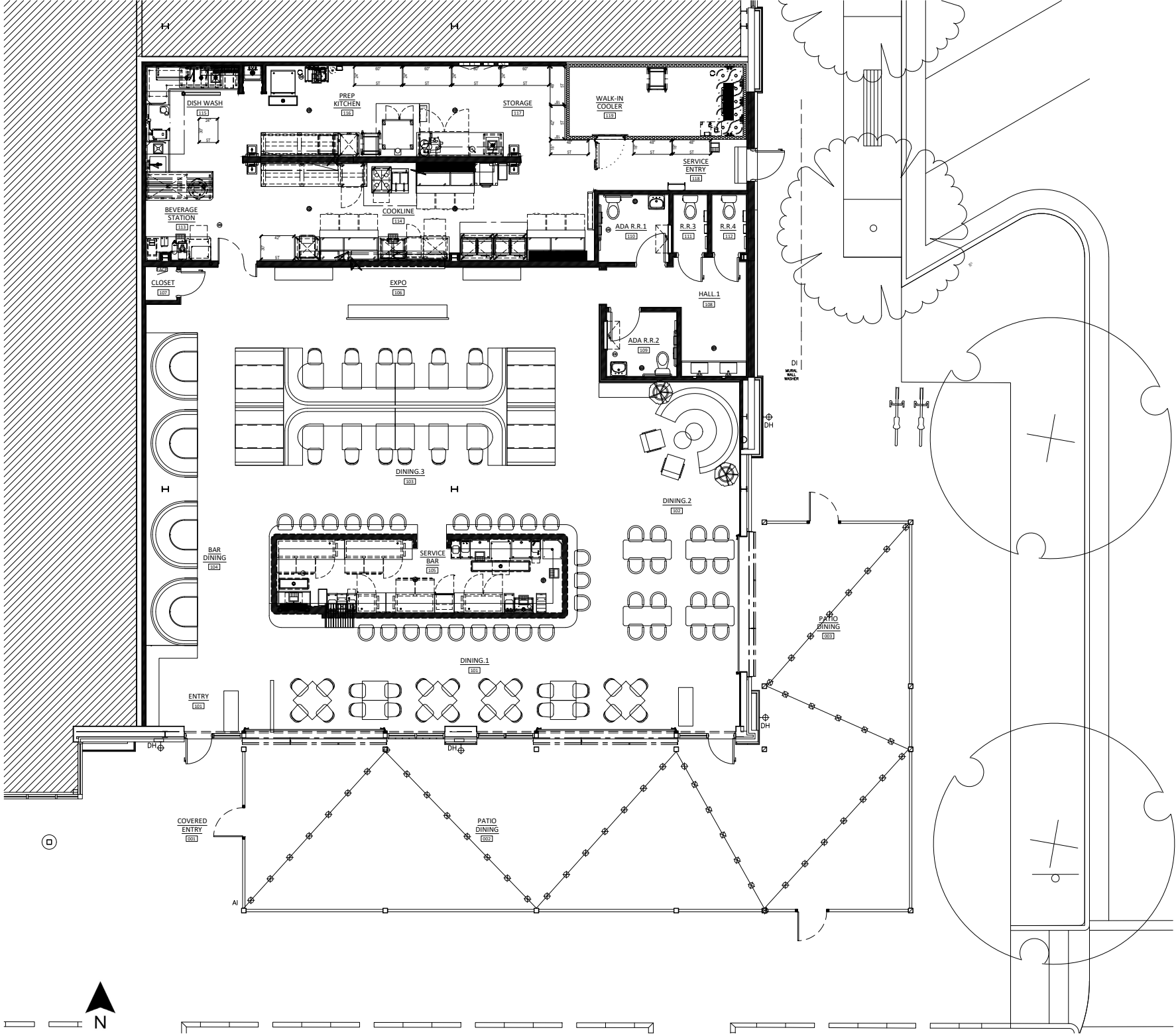
# DETAILED BUILDING ELEVATIONS

f.



# SITE LIGHTING PLAN

a.






EXTERIOR LIGHTING PLAN

N.T.S.



# SITE LIGHTING PLAN

b.

SPEC NUMBER	LOCATION	DESCRIPTION	MANUFACTURER	QTY. OF FIXTURE	IMAGE	MOUNTING HEIGHT
LT-AI	FESTOON LIGHTING PATIO	COMMERCIAL GRADE E26   LS2-M-24-48-BK & LS-M-24-100-BK   LS-CABLE-60, LS-CABLE-110, LS-LOCK-4, LS-TT	AMERICAN LIGHTING	REFER TO ARCHITECTURAL RCP & ELECTRICAL LIGHTING PLAN		SUSPENDED FROM CANOPY STRUCTURE
LT-DH	EXTERIOR WALL SCONCE	PERI LED OUTDOOR WALL SCONCE	KUZCO LIGHTING	4		6'-0" AFF
LT-DI	WALL WASHER MURAL	MICRO SERIES LOW PROFILE 48" LED WALL WASHER (36W)  WARM WHITE SKU: AL-WW-M-48	ASPECT LED	7 (48" STRIPS)		MOUNTED TO EXISTING CANOPY

