



1 FRONT "SOUTH" ELEVATION (ENTRANCE/PARKING/DROP-OFF FACADE)
A1 1/4" = 1'-0"

MATERIALS:

- ① DARK GREY E.I.F.S
- ② LIGHT GREY ALUMINUM HVAC LOUVER SCREENING PTAC
- ③ SIMULATED WOOD PANEL
- ④ GREY ALUMINUM WINDOW WITHOUT LOUVER
- ⑤ LIGHT GREY ALUMINUM STOREFRONT WINDOW
- ⑥ GREY ALUMINUM WINDOW WITH INTEGRAL HVAC LOUVER SCREENING PTAC
- ⑦ LIGHT GREY ALUMINUM COPING
- ⑧ MEDIUM LIGHT GREY E.I.F.S
- ⑨ MEDIUM DARK GREY E.I.F.S
- ⑩ MODULAR RED / BROWN BRICK VENEER
- ⑪ DARK GREY ALUMINUM COPING
- ⑫ OFF WHITE E.I.F.S
- ⑬ DARK GREY ALUMINUM CANOPY

MATERIAL CALCULATIONS:

- GLAZING / OPENINGS - 34%
- DARK GREY E.I.F.S - 15%
- MEDIUM LIGHT GREY E.I.F.S - 14%
- MEDIUM DARK GREY E.I.F.S - 6%
- MODULAR BRICK VENEER - 16%
- OFF WHITE E.I.F.S - 15%

PRELIMINARY
SCHEMATIC DESIGN

OWNER SET #0
FRANCHISE SET #0
BID SET #0
BUILDING DEPT #0
FIRE MARSHAL #0
HEALTH DEPT #0

ISSUE DATE: 09.29.17

Fordham Blvd,
Chapel hill, North Carolina

REVISION		DATE
NO.	DATE	COMMENTS
1		
2		
3		
4		
5		
6		
7		

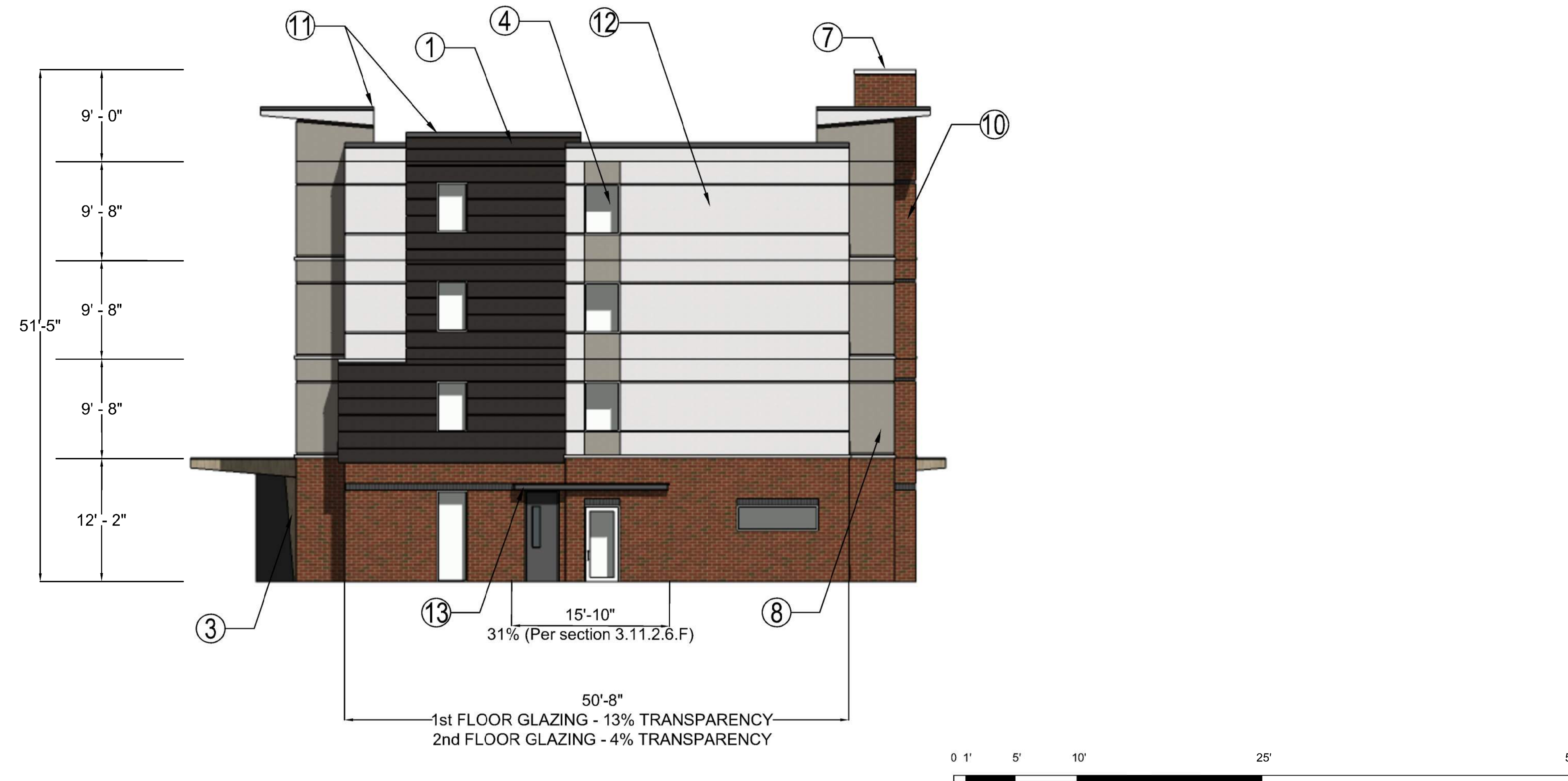
DRAWN BY

CHECKED BY

PROJECT DATE

PROJECT NUMBER

TRU by Hilton
Design Alternate - 8



1 SIDE "EAST" ELEVATION
A2 1/4" = 1'-0"

MATERIALS:

- ① DARK GREY E.I.F.S
- ② LIGHT GREY ALUMINUM HVAC LOUVER SCREENING PTAC
- ③ SIMULATED WOOD PANEL
- ④ GREY ALUMINUM WINDOW WITHOUT LOUVER
- ⑤ LIGHT GREY ALUMINUM STOREFRONT WINDOW
- ⑥ GREY ALUMINUM WINDOW WITH INTEGRAL HVAC LOUVER SCREENING PTAC
- ⑦ LIGHT GREY ALUMINUM COPING
- ⑧ MEDIUM LIGHT GREY E.I.F.S
- ⑨ MEDIUM DARK GREY E.I.F.S
- ⑩ MODULAR RED / BROWN BRICK VENEER
- ⑪ DARK GREY ALUMINUM COPING
- ⑫ OFF WHITE E.I.F.S
- ⑬ DARK GREY ALUMINUM CANOPY

MATERIAL CALCULATIONS:

- GLAZING / OPENINGS - 7%
- DARK GREY E.I.F.S - 20%
- MEDIUM LIGHT GREY E.I.F.S - 14%
- MEDIUM DARK GREY E.I.F.S - 0%
- MODULAR BRICK VENEER - 27%
- OFF WHITE E.I.F.S - 32%

PRELIMINARY
SCHEMATIC DESIGN

OWNER SET #0
FRANCHISE SET #0
BID SET #0
BUILDING DEPT #0
FIRE MARSHAL #0
HEALTH DEPT #0

ISSUE DATE: 09.29.17

Fordham Blvd,
Chapel hill, North Carolina

REVISION		DATE
NO.	DATE	COMMENTS
1		
2		
3		
4		
5		
6		
7		

DRAWN BY
CHECKED BY
PROJECT DATE
PROJECT NUMBER

TRU by Hilton
Design Alternate - 8



1 REAR "NORTH" ELEVATION (FORDHAM BLVD. FACADE)
A3 1/4" = 1'-0"

MATERIALS:

- ① DARK GREY E.I.F.S
- ② LIGHT GREY ALUMINUM HVAC LOUVER SCREENING PTAC
- ③ SIMULATED WOOD PANEL
- ④ GREY ALUMINUM WINDOW WITHOUT LOUVER
- ⑤ LIGHT GREY ALUMINUM STOREFRONT WINDOW
- ⑥ GREY ALUMINUM WINDOW WITH INTEGRAL HVAC LOUVER SCREENING PTAC
- ⑦ LIGHT GREY ALUMINUM COPING
- ⑧ MEDIUM LIGHT GREY E.I.F.S
- ⑨ MEDIUM DARK GREY E.I.F.S
- ⑩ MODULAR RED / BROWN BRICK VENEER
- ⑪ DARK GREY ALUMINUM COPING
- ⑫ OFF WHITE E.I.F.S
- ⑬ DARK GREY ALUMINUM CANOPY

MATERIAL CALCULATIONS:

- GLAZING / OPENINGS - 37%
- DARK GREY E.I.F.S - 5%
- MEDIUM LIGHT GREY E.I.F.S - 16%
- MEDIUM DARK GREY E.I.F.S - 4%
- MODULAR BRICK VENEER - 23%
- OFF WHITE E.I.F.S - 15%

PRELIMINARY
SCHEMATIC DESIGN

OWNER SET #0
FRANCHISE SET #0
BID SET #0
BUILDING DEPT #0
FIRE MARSHAL #0
HEALTH DEPT #0

ISSUE DATE: 09.29.17

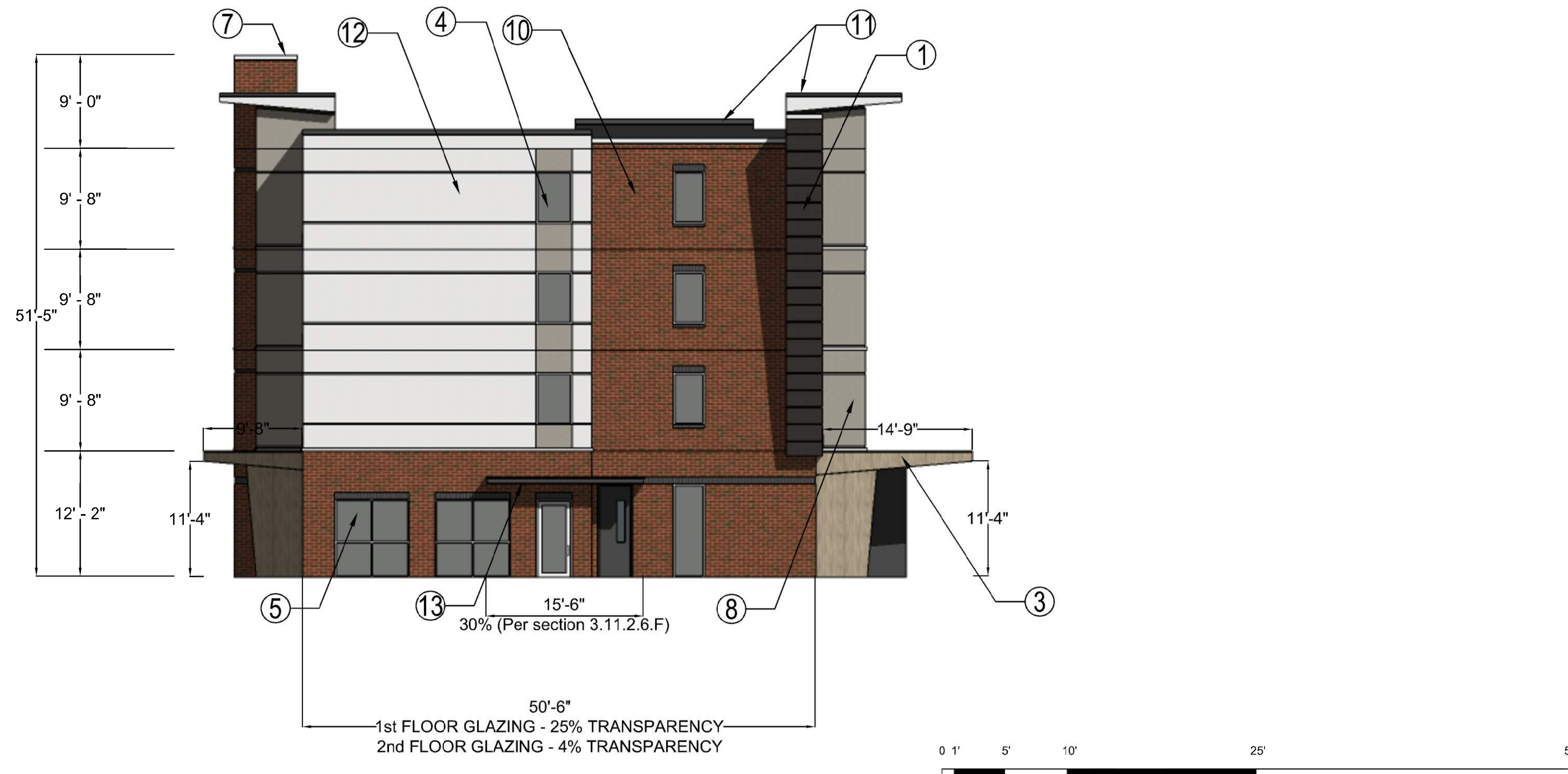
Fordham Blvd,
Chapel hill, North Carolina

REVISION NO.	DATE	COMMENTS	DATE
1			
2			
3			
4			
5			
6			
7			

DRAWN BY
CHECKED BY
PROJECT DATE
PROJECT NUMBER

TRU by Hilton
Design Alternate - 8

ALL DESIGNS, DRAWINGS AND SPECIFICATIONS DEPICTED ON THIS SHEET ARE THE PROPERTY OF THE R B A GROUP, INC. ANY UNAUTHORIZED USE OR REPRODUCTION IS SUBJECT TO LEGAL PROSECUTION. POSSESSION IN ANY FORM CONSTITUTES ACCEPTANCE OF THESE CONDITIONS. COPYRIGHT 2016



1 SIDE "WEST" ELEVATION (HILLSTONE STREET FACADE)
A4 1/4" = 1'-0"

MATERIALS:

- ① DARK GREY E.I.F.S
- ② LIGHT GREY ALUMINUM HVAC LOUVER SCREENING PTAC
- ③ SIMULATED WOOD PANEL
- ④ GREY ALUMINUM WINDOW WITHOUT LOUVER
- ⑤ LIGHT GREY ALUMINUM STOREFRONT WINDOW
- ⑥ GREY ALUMINUM WINDOW WITH INTEGRAL HVAC LOUVER SCREENING PTAC
- ⑦ LIGHT GREY ALUMINUM COPING
- ⑧ MEDIUM LIGHT GREY E.I.F.S
- ⑨ MEDIUM DARK GREY E.I.F.S
- ⑩ MODULAR RED / BROWN BRICK VENEER
- ⑪ DARK GREY ALUMINUM COPING
- ⑫ OFF WHITE E.I.F.S
- ⑬ DARK GREY ALUMINUM CANOPY

MATERIAL CALCULATIONS:

- GLAZING / OPENINGS - 11%
- DARK GREY E.I.F.S - 5%
- MEDIUM LIGHT GREY E.I.F.S - 14%
- MEDIUM DARK GREY E.I.F.S - 0%
- MODULAR BRICK VENEER - 41%
- OFF WHITE E.I.F.S - 29%

PRELIMINARY
SCHEMATIC DESIGN

OWNER SET #0
FRANCHISE SET #0
BID SET #0
BUILDING DEPT #0
FIRE MARSHAL #0
HEALTH DEPT #0

ISSUE DATE: 09.29.17

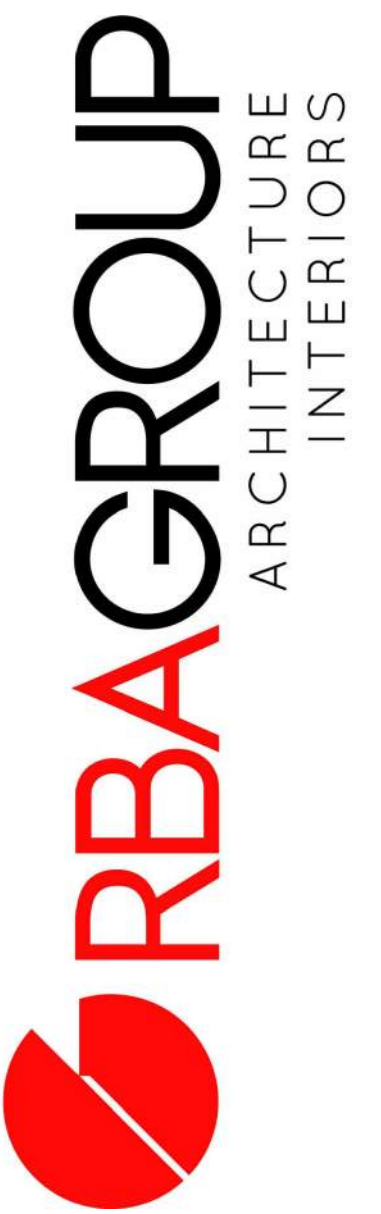
Fordham Blvd,
Chapel hill, North Carolina

REVISION		DATE
NO.	DATE	COMMENTS
1		
2		
3		
4		
5		
6		
7		

DRAWN BY
CHECKED BY
PROJECT DATE
PROJECT NUMBER

TRU by Hilton
Design Alternate - 8

ALL DESIGNS, DRAWINGS AND SPECIFICATIONS DEPICTED ON THIS SHEET ARE THE PROPERTY OF THE R B A GROUP, INC. ANY UNAUTHORIZED USE OR REPRODUCTION IS SUBJECT TO LEGAL PROSECUTION. POSSESSION IN ANY FORM CONSTITUTES ACCEPTANCE OF THESE CONDITIONS. COPYRIGHT 2016



122 - B W. BLAND ST
CHARLOTTE, NC 28203
TEL :: 704 . 344 . 9098

PRELIMINARY SCHEMATIC DESIGN

- OWNER SET #0
- FRANCHISE SET #0
- BID SET #0
- BUILDING DEPT #0
- FIRE MARSHAL #0
- HEALTH DEPT #0

ISSUE DATE: 09.29.17

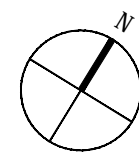
Fordham Blvd,
Chapel hill, North Carolina

REVISION NO.	DATE	COMMENTS	DATE
1			
2			
3			
4			
5			
6			
7			

DRAWN BY
CHECKED BY
PROJECT DATE
PROJECT NUMBER

TRU by Hilton
Design Alternate - 8

1 FORDHAM BLVD. FACADE RENDERED VIEW
A5 1/4" = 1'-0"



ALL DESIGNS, DRAWINGS AND SPECIFICATIONS DEPICTED ON THIS SHEET ARE THE PROPERTY OF THE RBA GROUP, INC. ANY UNAUTHORIZED USE OR REPRODUCTION IS SUBJECT TO LEGAL PROSECUTION. POSSESSION IN ANY FORM CONSTITUTES ACCEPTANCE OF THESE CONDITIONS. COPYRIGHT 2016



1 STREET PLAZA RENDERED VIEW
A6 1/4" = 1'-0"

PRELIMINARY
SCHEMATIC DESIGN

OWNER SET #0
FRANCHISE SET #0
BID SET #0
BUILDING DEPT #0
FIRE MARSHAL #0
HEALTH DEPT #0

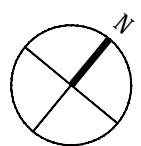
ISSUE DATE: 09.29.17

Fordham Blvd,
Chapel hill, North Carolina

REVISION NO.	DATE	COMMENTS	DATE
1			
2			
3			
4			
5			
6			
7			

DRAWN BY
CHECKED BY
PROJECT DATE
PROJECT NUMBER

TRU by Hilton
Design Alternate - 8



ALL DESIGNS, DRAWINGS AND SPECIFICATIONS DEPICTED ON THIS SHEET ARE THE PROPERTY OF THE R B A GROUP, INC. ANY UNAUTHORIZED USE OR REPRODUCTION IS SUBJECT TO LEGAL PROSECUTION. POSSESSION IN ANY FORM CONSTITUTES ACCEPTANCE OF THESE CONDITIONS. COPYRIGHT 2016



PRELIMINARY
SCHEMATIC DESIGN

OWNER SET #0
FRANCHISE SET #0
BID SET #0
BUILDING DEPT #0
FIRE MARSHAL #0
HEALTH DEPT #0

ISSUE DATE: 09.29.17

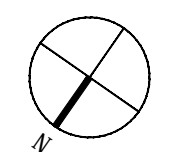
Fordham Blvd,
Chapel hill, North Carolina

REVISION		DATE
NO.	DATE	COMMENTS
1		
2		
3		
4		
5		
6		
7		

DRAWN BY
CHECKED BY
PROJECT DATE
PROJECT NUMBER

TRU by Hilton
Design Alternate - 8

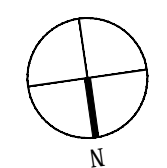
1 FRONT ELEVATION RENDERED VIEW
A7 1/4" = 1'-0"



ALL DESIGNS, DRAWINGS AND SPECIFICATIONS DEPICTED ON THIS SHEET ARE THE PROPERTY OF THE R B A GROUP, INC. ANY UNAUTHORIZED USE OR REPRODUCTION IS SUBJECT TO LEGAL PROSECUTION. POSSESSION IN ANY FORM CONSTITUTES ACCEPTANCE OF THESE CONDITIONS. COPYRIGHT 2016



1 AMENITY RENDERED VIEW
A8 1/4" = 1'-0"



PRELIMINARY
SCHEMATIC DESIGN

OWNER SET #0
FRANCHISE SET #0
BID SET #0
BUILDING DEPT #0
FIRE MARSHAL #0
HEALTH DEPT #0

ISSUE DATE: 09.29.17

Fordham Blvd,
Chapel hill, North Carolina

REVISION NO.	DATE	COMMENTS	DATE
1			
2			
3			
4			
5			
6			
7			

DRAWN BY
CHECKED BY
PROJECT DATE
PROJECT NUMBER

TRU by Hilton
Design Alternate - 8

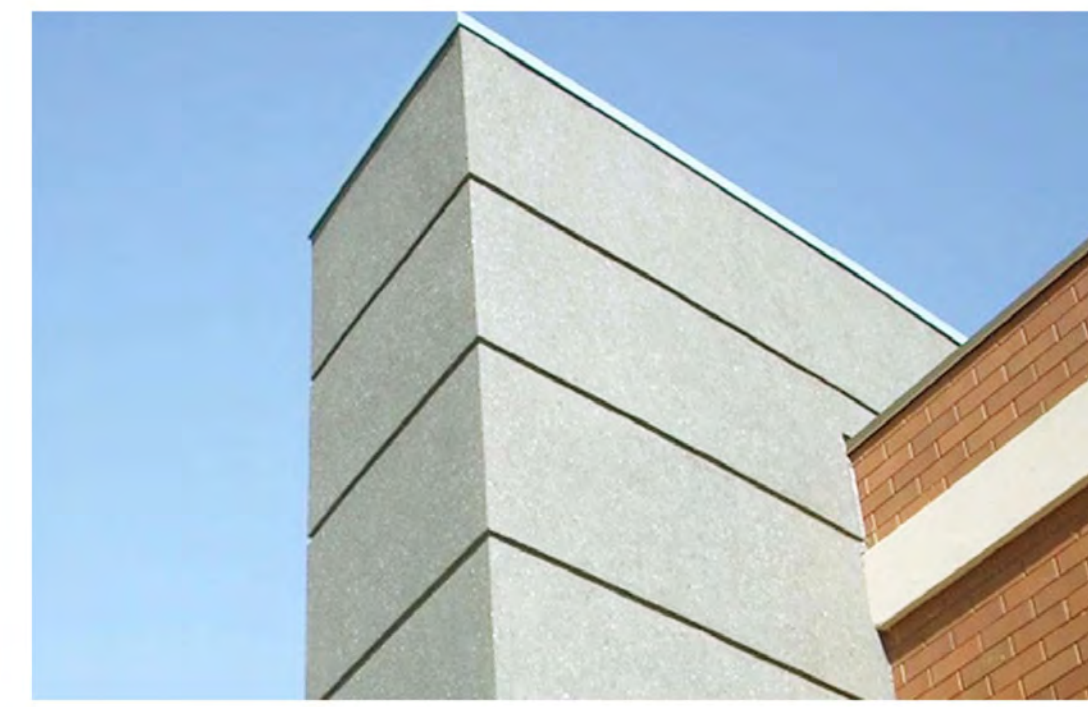
ALL DESIGNS, DRAWINGS AND SPECIFICATIONS DEPICTED ON THIS SHEET ARE THE PROPERTY OF THE RBA GROUP, INC. ANY UNAUTHORIZED USE OR REPRODUCTION IS SUBJECT TO LEGAL PROSECUTION. POSSESSION IN ANY FORM CONSTITUTES ACCEPTANCE OF THESE CONDITIONS. COPYRIGHT 2016



DARK GREY EIFS



MEDIUM DARK GREY EIFS



MEDIUM LIGHT GREY EIFS



SIMULATED WOOD PANEL



GREY ALUMINUM WINDOW W/O LOUVER



DARK GREY ALUMINUM CANOPY

1 MATERIAL STUDY
A9 1/4" = 1'-0"

PRELIMINARY
SCHEMATIC DESIGN

OWNER SET #0
FRANCHISE SET #0
BID SET #0
BUILDING DEPT #0
FIRE MARSHAL #0
HEALTH DEPT #0

ISSUE DATE: 09.29.17

Fordham Blvd,
Chapel hill, North Carolina

REVISION NO.	DATE	COMMENTS	DATE
1			
2			
3			
4			
5			
6			
7			

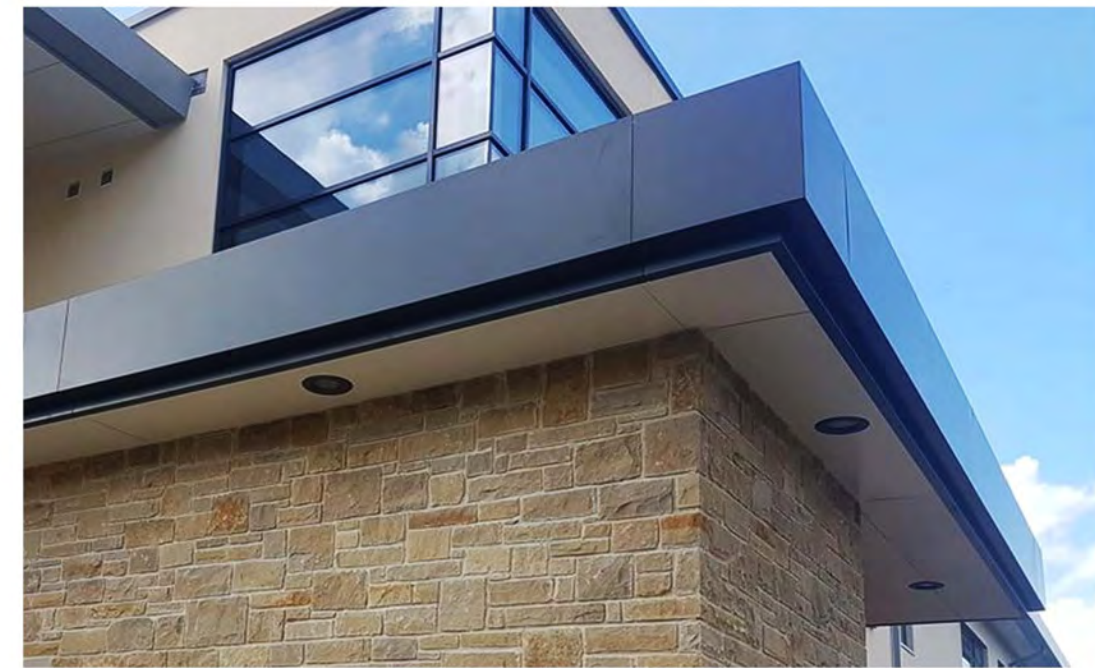
DRAWN BY
CHECKED BY
PROJECT DATE
PROJECT NUMBER

TRU by Hilton
Design Alternate - 8

ALL DESIGNS, DRAWINGS AND SPECIFICATIONS DEPICTED ON THIS SHEET ARE THE PROPERTY OF THE R B A GROUP, INC. ANY UNAUTHORIZED USE OR REPRODUCTION IS SUBJECT TO LEGAL PROSECUTION. POSSESSION IN ANY FORM CONSTITUTES ACCEPTANCE OF THESE CONDITIONS. COPYRIGHT 2016



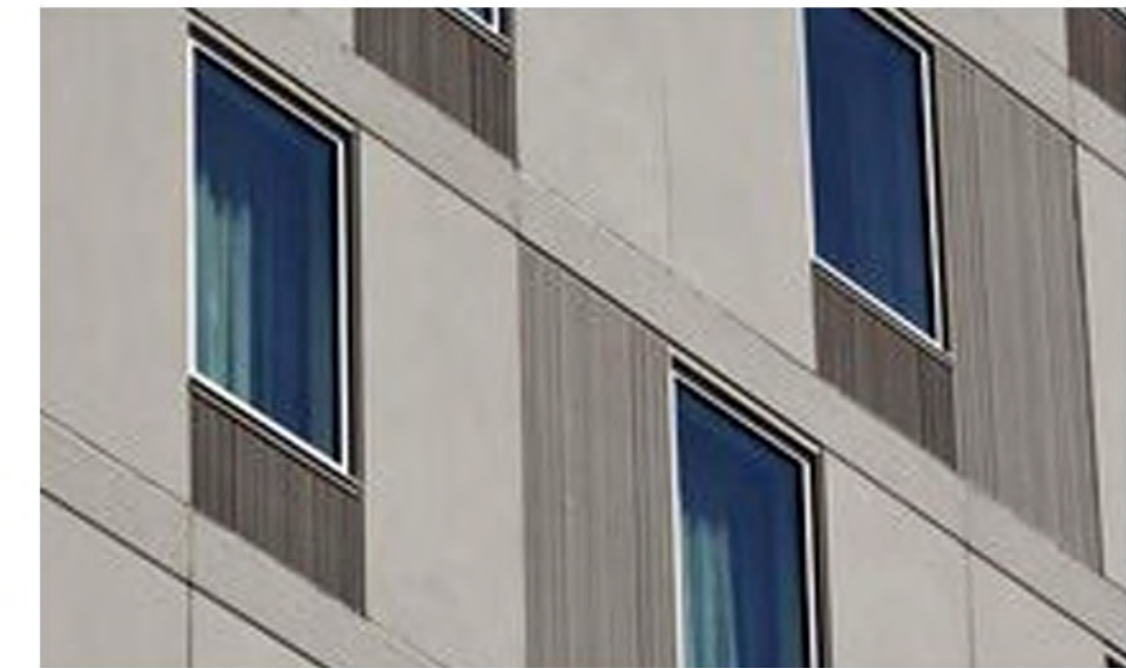
OFF WHITE EFIS



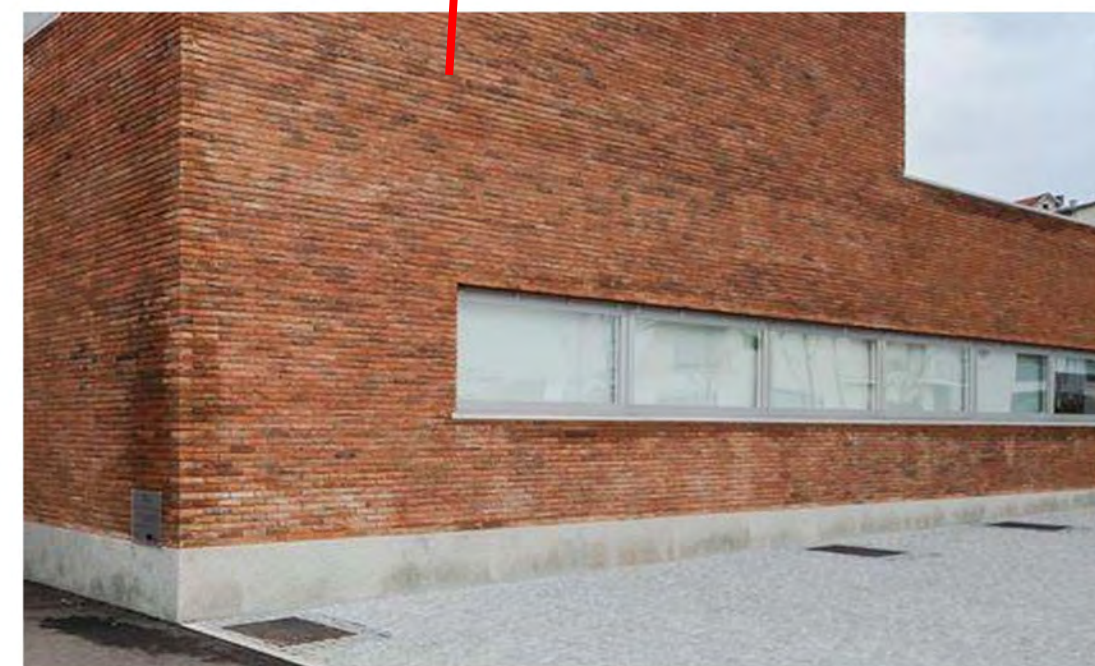
DARK GREY ALUMINUM COPING



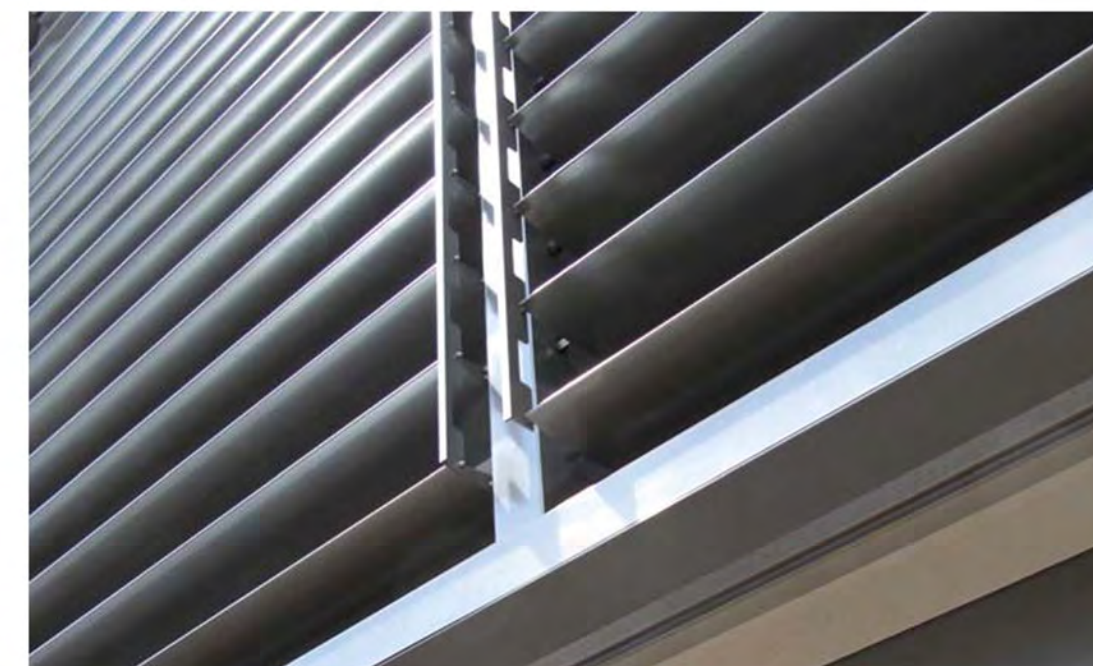
LIGHT GREY ALUMINUM COPING



GREY ALUMINUM WINDOW W/ INTEGRAL HVAC LOUVER



MODULAR RED/BROWN BRICK VENEER



LIGHT GREY ALUMINUM HVAC LOUVER



LIGHT GREY ALUMINUM STOREFRONT WINDOW

1 MATERIAL STUDY
A10 1/4" = 1'-0"

PRELIMINARY
SCHEMATIC DESIGN

OWNER SET #0
FRANCHISE SET #0
BID SET #0
BUILDING DEPT #0
FIRE MARSHAL #0
HEALTH DEPT #0

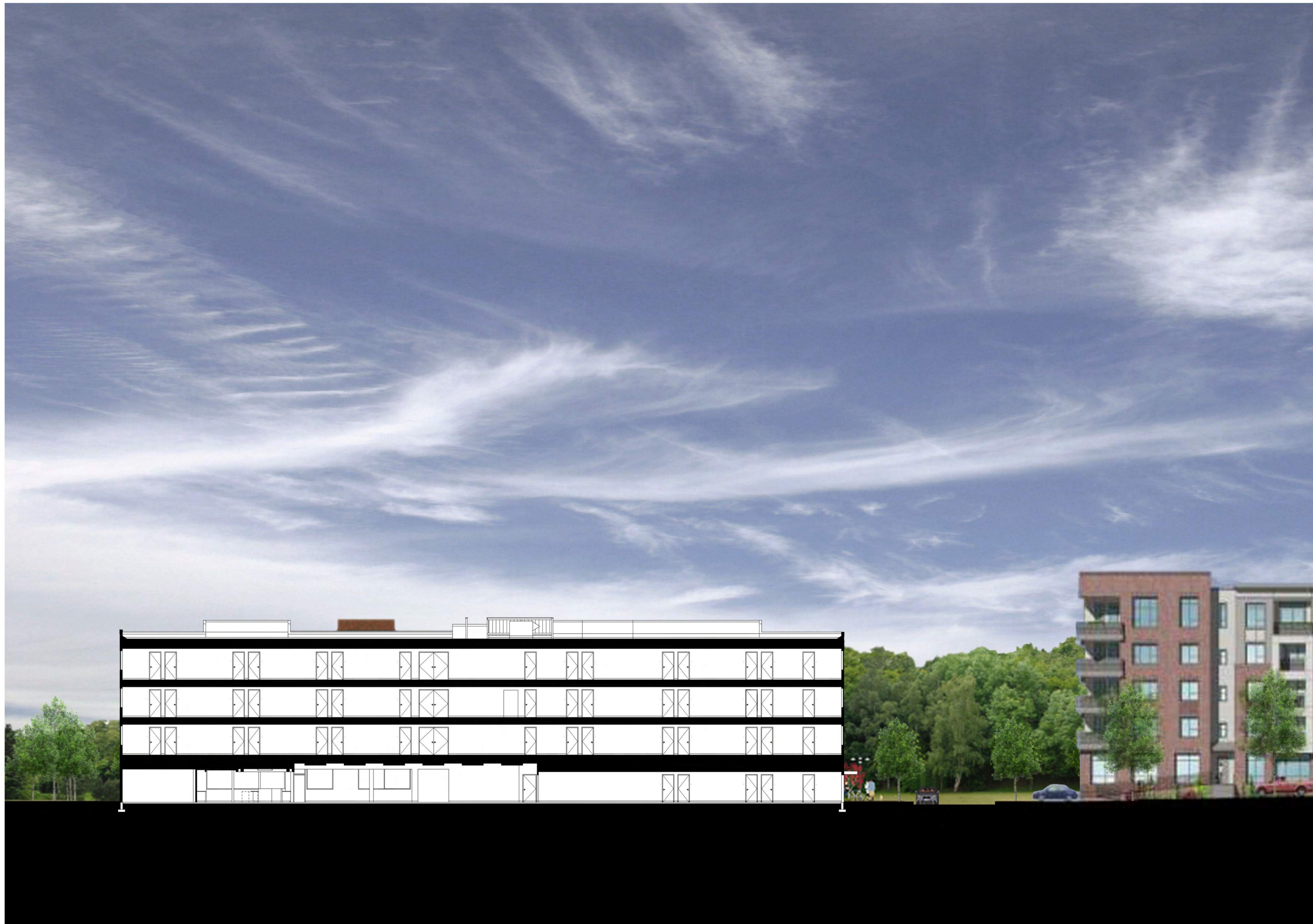
ISSUE DATE: 09.29.17

Fordham Blvd,
Chapel hill, North Carolina

REVISION NO.	DATE	COMMENTS	DATE
1			
2			
3			
4			
5			
6			
7			

DRAWN BY
CHECKED BY
PROJECT DATE
PROJECT NUMBER

TRU by Hilton
Design Alternate - 8



0' 5' 10' 25' 50'

1 CROSS SITE SECTION
A11

PRELIMINARY
SCHEMATIC DESIGN

OWNER SET #0
FRANCHISE SET #0
BID SET #0
BUILDING DEPT #0
FIRE MARSHAL #0
HEALTH DEPT #0

ISSUE DATE: 09.29.17

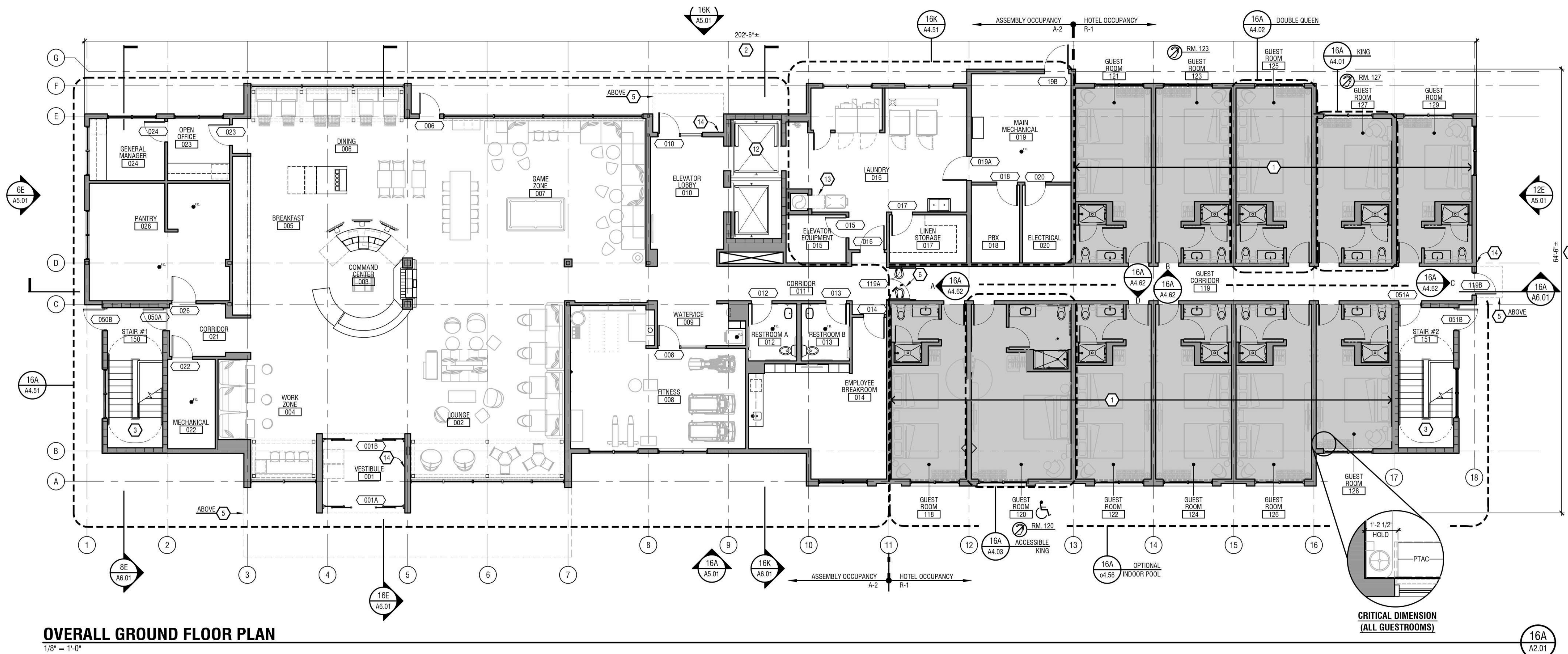
Fordham Blvd,
Chapel hill, North Carolina

REVISION		DATE
NO.	DATE	COMMENTS
1		
2		
3		
4		
5		
6		
7		

DRAWN BY
CHECKED BY
PROJECT DATE
PROJECT NUMBER

TRU by Hilton
Design Alternate - 8

ALL DESIGNS, DRAWINGS AND SPECIFICATIONS DEPICTED ON THIS SHEET ARE THE PROPERTY OF THE R.B.A. GROUP, INC. ANY UNAUTHORIZED USE OR REPRODUCTION IS SUBJECT TO LEGAL PROSECUTION. POSSESSION IN ANY FORM CONSTITUTES ACCEPTANCE OF THESE CONDITIONS. COPYRIGHT 2016



OVERALL GROUND FLOOR PLAN
1/8" = 1'-0"

1
A12
1/4" = 1'-0"

PRELIMINARY
SCHEMATIC DESIGN

- OWNER SET #0
- FRANCHISE SET #0
- BID SET #0
- BUILDING DEPT #0
- FIRE MARSHAL #0
- HEALTH DEPT #0

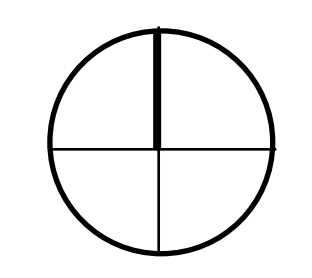
ISSUE DATE: 09.29.17

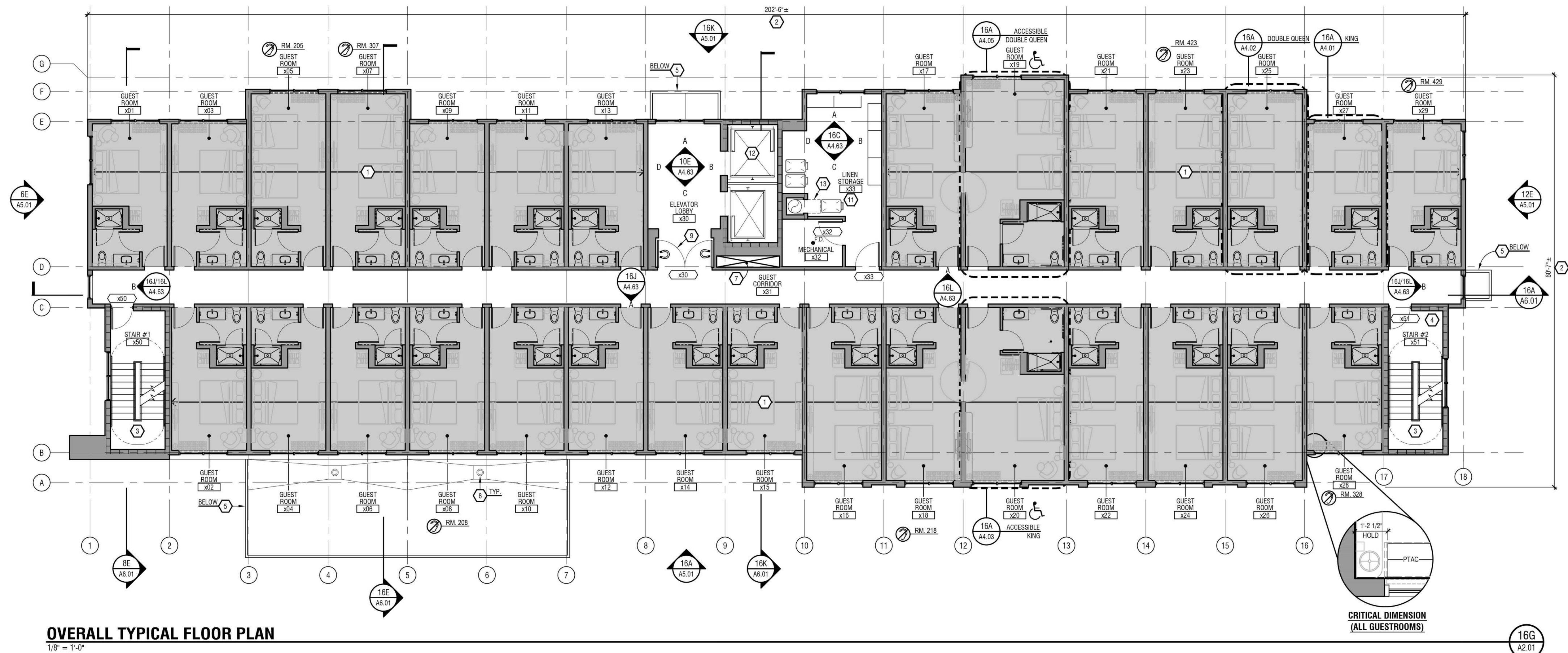
Fordham Blvd,
Chapel hill, North Carolina

REVISION NO.	DATE	COMMENTS	DATE
1			
2			
3			
4			
5			
6			
7			

DRAWN BY
CHECKED BY
PROJECT DATE
PROJECT NUMBER

TRU by Hilton
Design Alternate - 8





OVERALL TYPICAL FLOOR PLAN

1/8" = 1'-0"

1 **PROTOTYPICAL FLOOR PLANS**

A13 1/4" = 1'-0"

PRELIMINARY
SCHEMATIC DESIGN

OWNER SET #0
FRANCHISE SET #0
BID SET #0
BUILDING DEPT #0
FIRE MARSHAL #0
HEALTH DEPT #0

ISSUE DATE: 09.29.17

Fordham Blvd,
Chapel hill, North Carolina

REVISION NO.	DATE	COMMENTS	DATE
1			
2			
3			
4			
5			
6			
7			

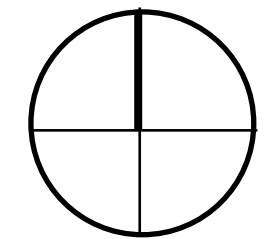
DRAWN BY
CHECKED BY
PROJECT DATE
PROJECT NUMBER

TRU by Hilton
Design Alternate - 8

ALL DESIGNS, DRAWINGS AND SPECIFICATIONS DEPICTED ON THIS SHEET ARE THE PROPERTY OF THE R B A GROUP, INC. ANY UNAUTHORIZED USE OR REPRODUCTION IS SUBJECT TO LEGAL PROSECUTION. POSSESSION IN ANY FORM CONSTITUTES ACCEPTANCE OF THESE CONDITIONS. COPYRIGHT 2016



1 CROSS SITE ELEVATION
A14



PRELIMINARY
SCHEMATIC DESIGN

OWNER SET #0
FRANCHISE SET #0
BID SET #0
BUILDING DEPT #0
FIRE MARSHAL #0
HEALTH DEPT #0

ISSUE DATE: 09.29.17

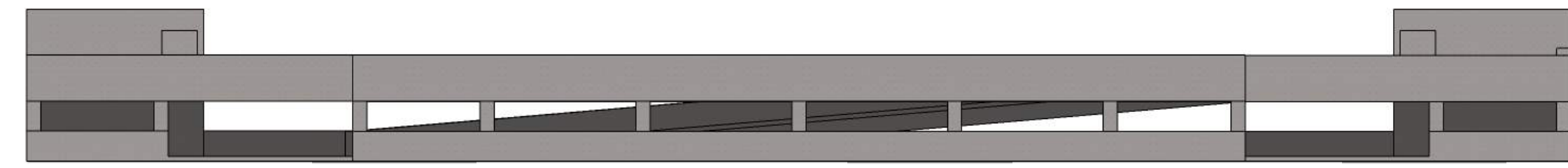
Fordham Blvd,
Chapel hill, North Carolina

REVISION		DATE
NO.	DATE	COMMENTS
1		
2		
3		
4		
5		
6		
7		

DRAWN BY
CHECKED BY
PROJECT DATE
PROJECT NUMBER

TRU by Hilton
Design Alternate - 8

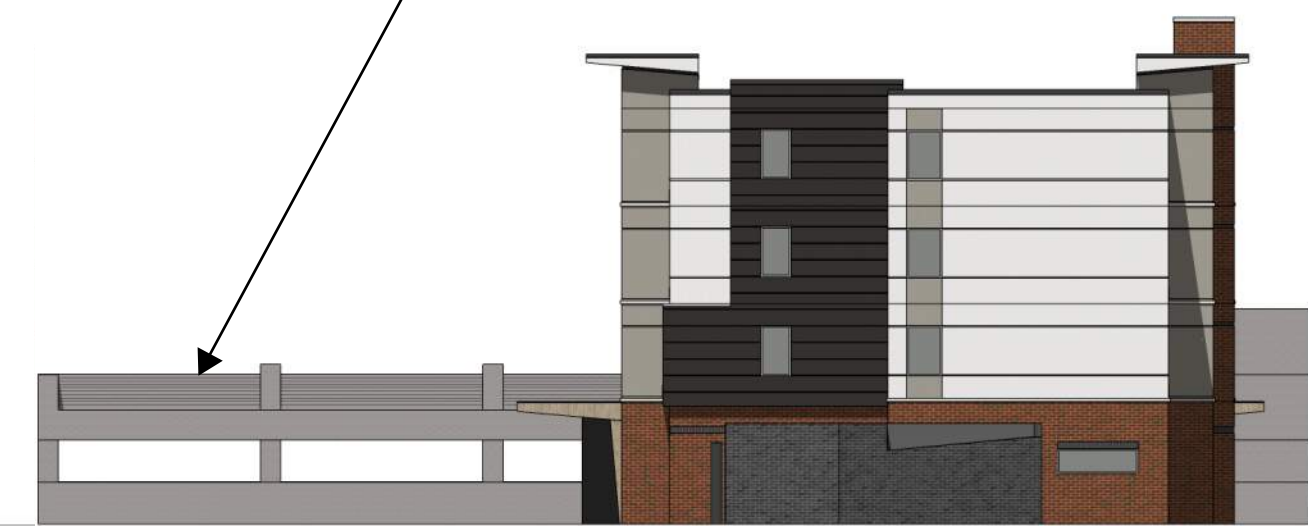
ALL DESIGNS, DRAWINGS AND SPECIFICATIONS DEPICTED ON THIS SHEET ARE THE PROPERTY OF THE RBA GROUP, INC. ANY UNAUTHORIZED USE OR REPRODUCTION IS SUBJECT TO LEGAL PROSECUTION. POSSESSION IN ANY FORM CONSTITUTES ACCEPTANCE OF THESE CONDITIONS. COPYRIGHT 2016



SOUTH

EXAMPLE CONCRETE PARKING GARAGE; PLACED ON NOVUS LANE NEXT TO HOTEL.

SIMPLE CABLE BARRIER ON HOTEL FACING SIDE ONLY.



EAST



DUMPSTER ROOM ENCLOSURE COLORED TO MATCH DARK GREY EFIS AND BLACK BRICK.

GATE MATERIAL - DARK GREY METAL; ENCLOSURE WALLS - BLACK BRICK.



NORTH



WEST

NOTE: 2-STORY PARKING DECK IS PROPOSED AS AN ALTERNATE. OWNER MAY OPT TO ELIMINATE THE SECOND STORY DECK (74 SPACES) SUBJECT TO THE APPROVAL OF THE TOWN MANAGER FOR A PARKING REDUCTION FOR SHARED PARKING WITH THE MULTI-FAMILY PARKING DECK.

01' 5' 10' 25' 50' 100'

1 BUILDING, DUMPSTER ENCLOSURE, AND PARKING GARAGE ELEVATIONS
A15

PRELIMINARY
SCHEMATIC DESIGN

OWNER SET #0
FRANCHISE SET #0
BID SET #0
BUILDING DEPT #0
FIRE MARSHAL #0
HEALTH DEPT #0

ISSUE DATE: 09.29.17

Fordham Blvd,
Chapel Hill, North Carolina

REVISION		DATE
NO.	DATE	COMMENTS
1		
2		
3		
4		
5		
6		
7		

DRAWN BY
CHECKED BY
PROJECT DATE
PROJECT NUMBER

TRU by Hilton
Design Alternate - 8