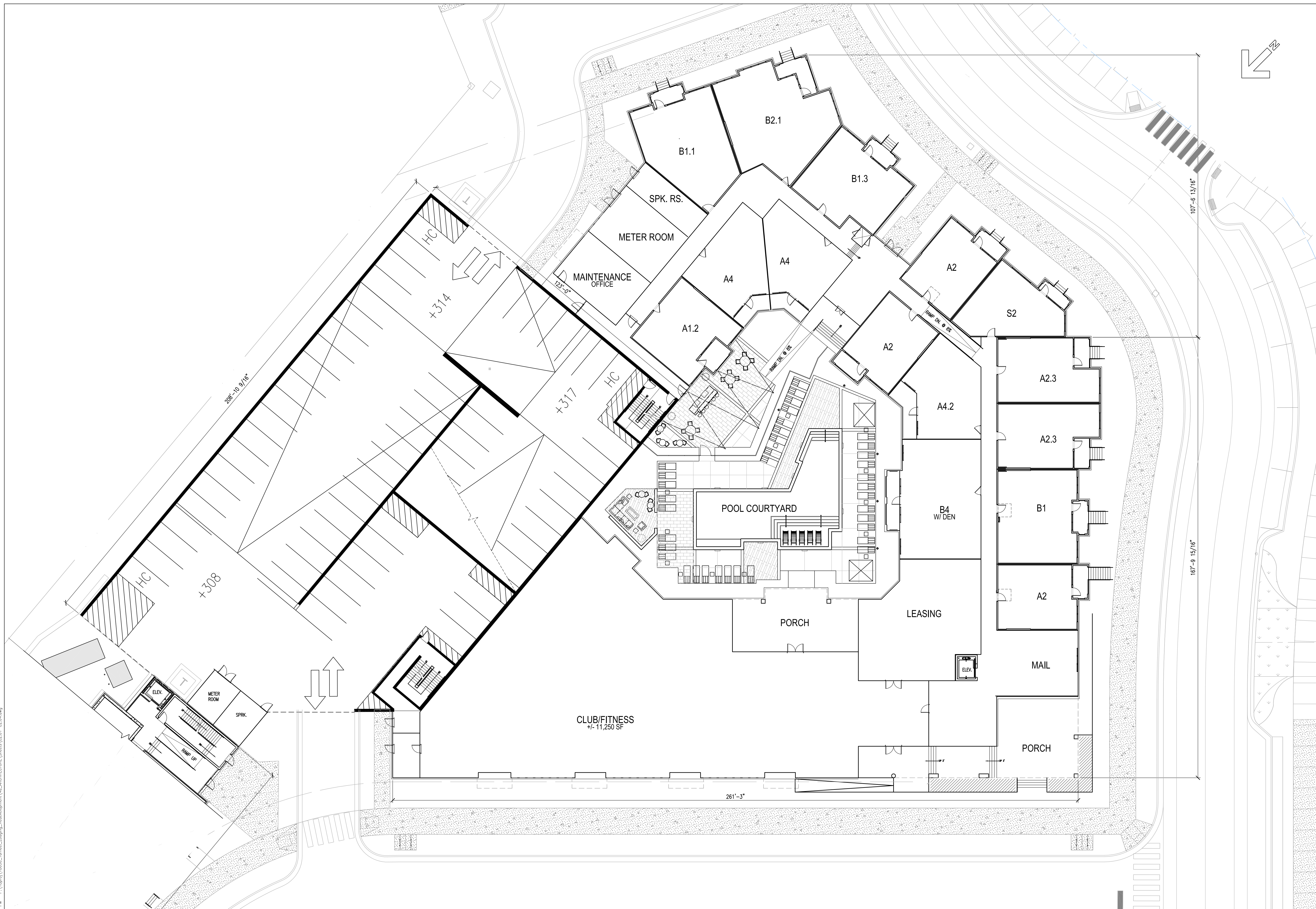


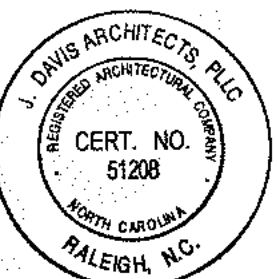
7/19/2018 5:43 PM F:\18pro\18030\_Tarheel\_Lodging\_Redevelopment\AIA\_ARCHITECTURE\_Sheets\C2.01-C2.04.dwg



**BUILDING 3 - LEVEL 1**  
 SCALE: 1/16" = 1'-0"

1

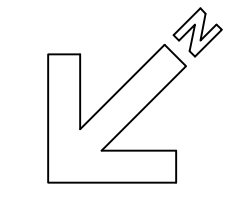
FOR  
 REVIEW  
 ONLY



PROJECT:	18030	DATE
ISSUE:	CDC SET	07.20.2018
REVISIONS:		
DRAWN BY:		
CHECKED BY:		
CONTENT:	BUILDING PLAN	

©2018 JDAVIS ARCHITECTS EXPRESSLY RESERVES ITS COMMON LAW COPYRIGHT AND OTHER PROPERTY RIGHTS IN THESE PLANS. THESE PLANS ARE NOT TO BE REPRODUCED, CHANGED OR COPIED IN ANY FORM OR MANNER WHATSOEVER, NOR ARE THEY TO BE ASSIGNED TO ANY THIRD PARTY WITHOUT FIRST OBTAINING THE EXPRESSED WRITTEN PERMISSION AND CONSENT OF JDAVIS ARCHITECTS, PLLC.

7/19/2018 5:44 PM P:\18pro\18030\_Tarheel\_Lodging\_Redevelopment\AIA\_ARCHITECTURE\_Sheets\C2.01-C2.04.dwg

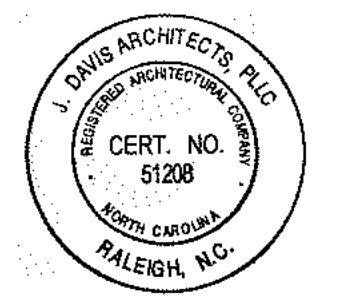


**BUILDING 3 - LEVEL 2-5**  
 SCALE: 1/16" = 1'-0"

1

Tarheel Lodging, LLC & Unicorn Group Fifteen, LLC  
**Tarheel Lodging Redevelopment**  
 Chapel Hill, NC

FOR  
 REVIEW  
 ONLY



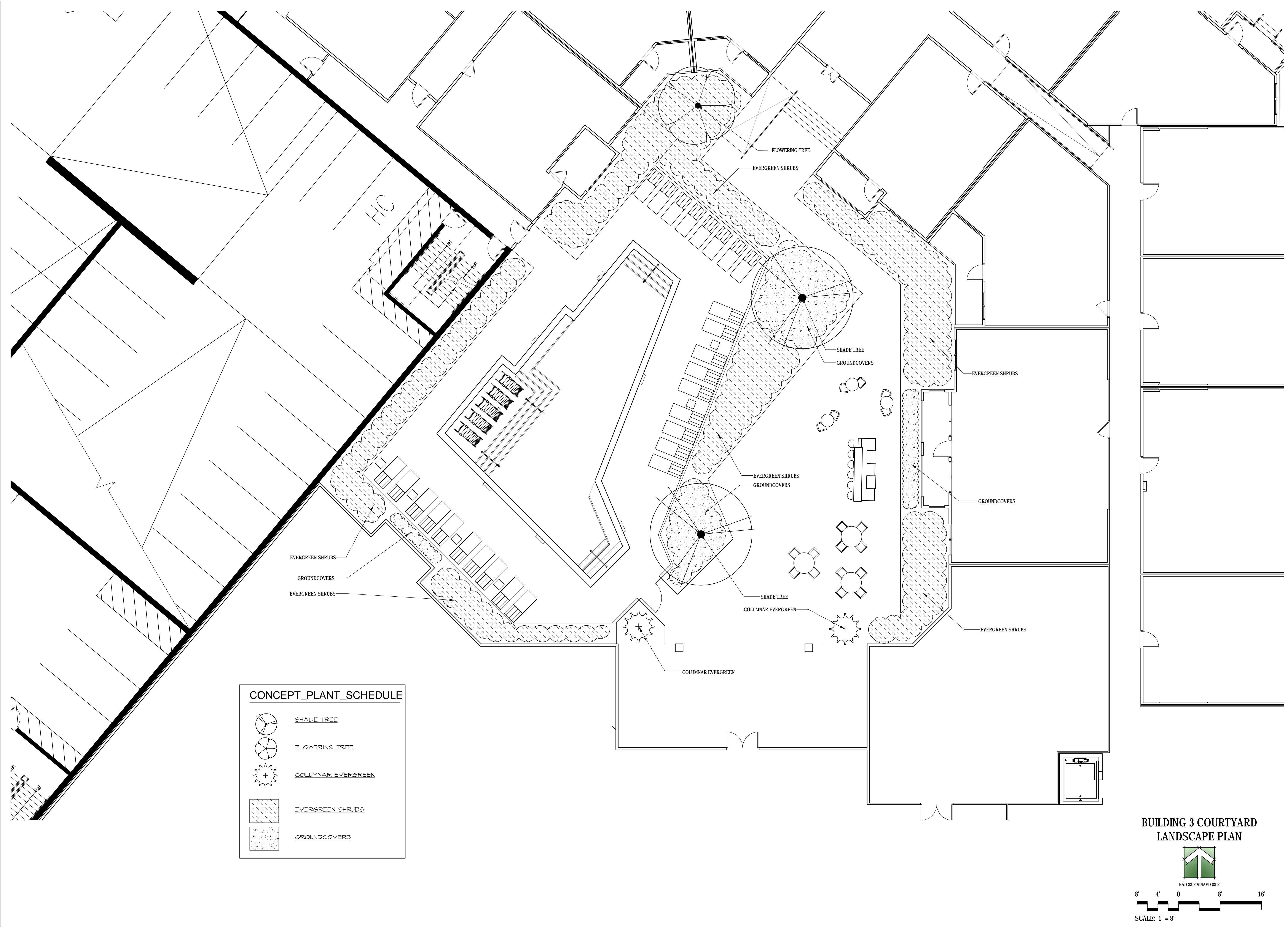
PROJECT:	18030	DATE
ISSUE:	CDC SET	07.20.2018
REVISIONS:		
DRAWN BY:		
CHECKED BY:		
CONTENT:	BUILDING PLAN	

C2.02

©2018 J. DAVIS ARCHITECTS RESERVES ITS COMMON LAW COPYRIGHT AND OTHER PROPERTY RIGHTS IN THESE PLANS. THESE PLANS ARE NOT TO BE REPRODUCED, CHANGED OR COPIED IN ANY FORM OR MANNER WHATSOEVER, NOR ARE THEY TO BE ASSIGNED TO ANY THIRD PARTY WITHOUT FIRST OBTAINING THE EXPRESSED WRITTEN PERMISSION AND CONSENT OF J. DAVIS ARCHITECTS, PLLC.

**JDAVIS**  
 510 South Wilmington St., Raleigh, NC 27601 | tel 919.835.1500  
 1518 Walnut St. Suite 1308 | Philadelphia, PA 19102 | tel 215.545.0121

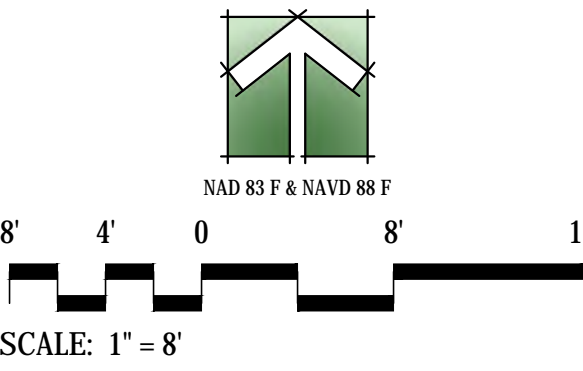
7/18/2018 11:10 AM I:\8pro\18030\_TarheelLodging\_Redevelopment\4c\_LAND\dwg-LA\CDC\_Pool\_Courtyard.dwg



**CONCEPT\_PLANT\_SCHEDULE**

	SHADE TREE
	FLOWERING TREE
	COLUMNAR EVERGREEN
	EVERGREEN SHRUBS
	GROUNDCOVERS

**BUILDING 3 COURTYARD  
LANDSCAPE PLAN**



©2018 J. DAVIS ARCHITECTS EXPRESSLY RESERVES ITS COMMON LAW COPYRIGHT AND OTHER PROPERTY RIGHTS IN THESE PLANS. THESE PLANS ARE NOT TO BE REPRODUCED, CHANGED OR COPIED IN ANY FORM OR MANNER WHATSOEVER, NOR ARE THEY TO BE ASSIGNED TO ANY THIRD PARTY WITHOUT FIRST OBTAINING THE EXPRESSED WRITTEN PERMISSION AND CONSENT OF J. DAVIS ARCHITECTS, PLLC.

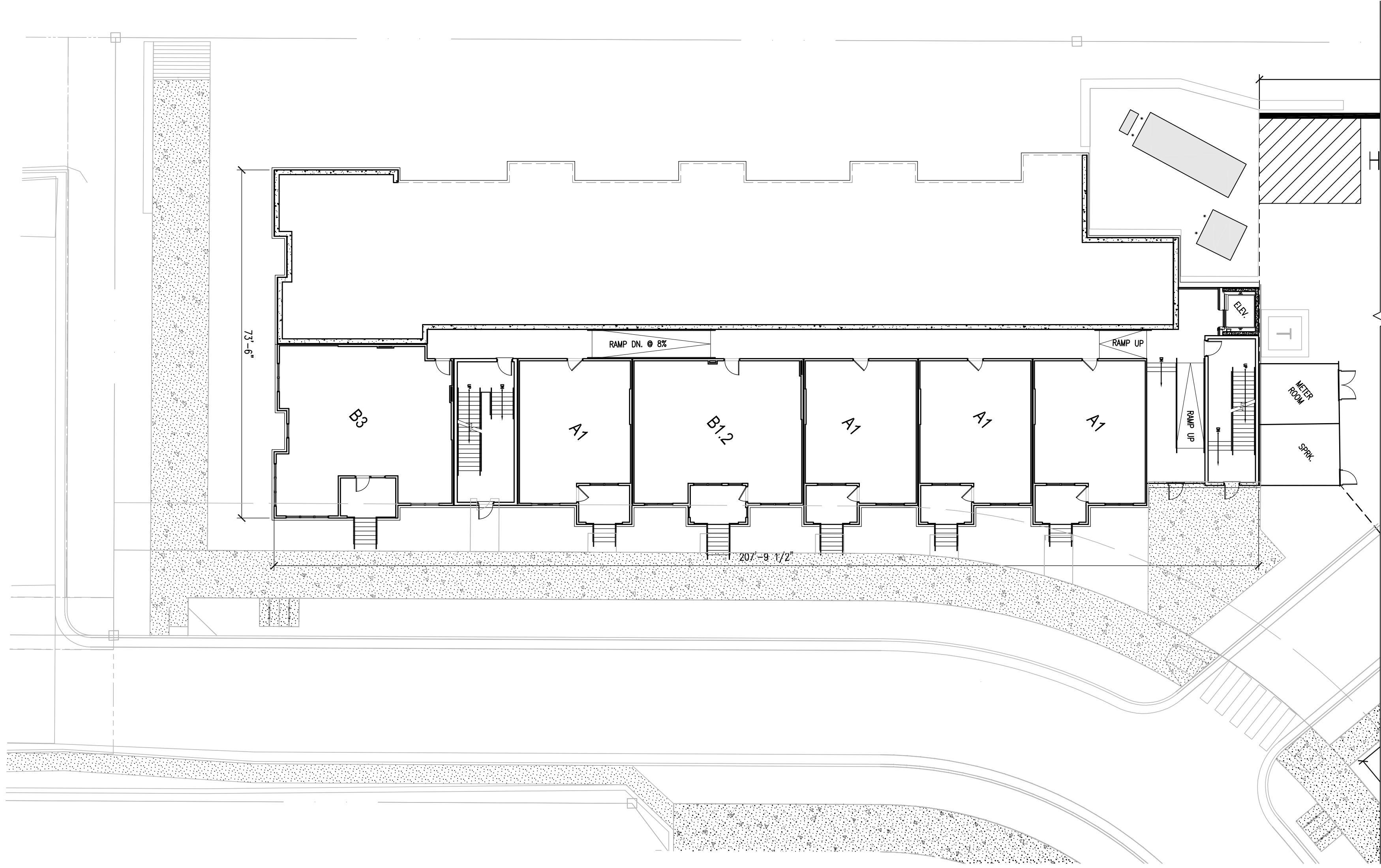


**Tarheel Lodging, LLC & Unicom Group Fifteen, LLC  
Tarheel Lodging Redevelopment  
Chapel Hill, NC**

FOR  
REVIEW  
ONLY



PROJECT:	18030	DATE
ISSUE:	CDC SET	07.20.2018
REVISIONS:		
DRAWN BY:		
CHECKED BY:		
CONTENT:		



**BUILDING 4 - LEVEL 1**  
 SCALE: 1/16" = 1'-0"

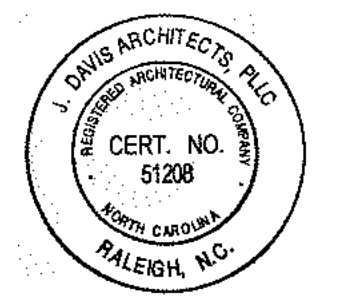
1

©2018 J. DAVIS ARCHITECTS RESERVES ITS COMMON LAW COPYRIGHT AND OTHER PROPERTY RIGHTS IN THESE PLANS. THESE PLANS ARE NOT TO BE REPRODUCED, CHANGED OR COPIED IN ANY FORM OR MANNER WHATSOEVER, NOR ARE THEY TO BE ASSIGNED TO ANY THIRD PARTY WITHOUT FIRST OBTAINING THE EXPRESSED WRITTEN PERMISSION AND CONSENT OF J. DAVIS ARCHITECTS, PLLC.

PROJECT:	18030	DATE
ISSUE:	CDC SET	07.20.2018
REVISIONS:		
DRAWN BY:		
CHECKED BY:		
CONTENT:	BUILDING PLAN	

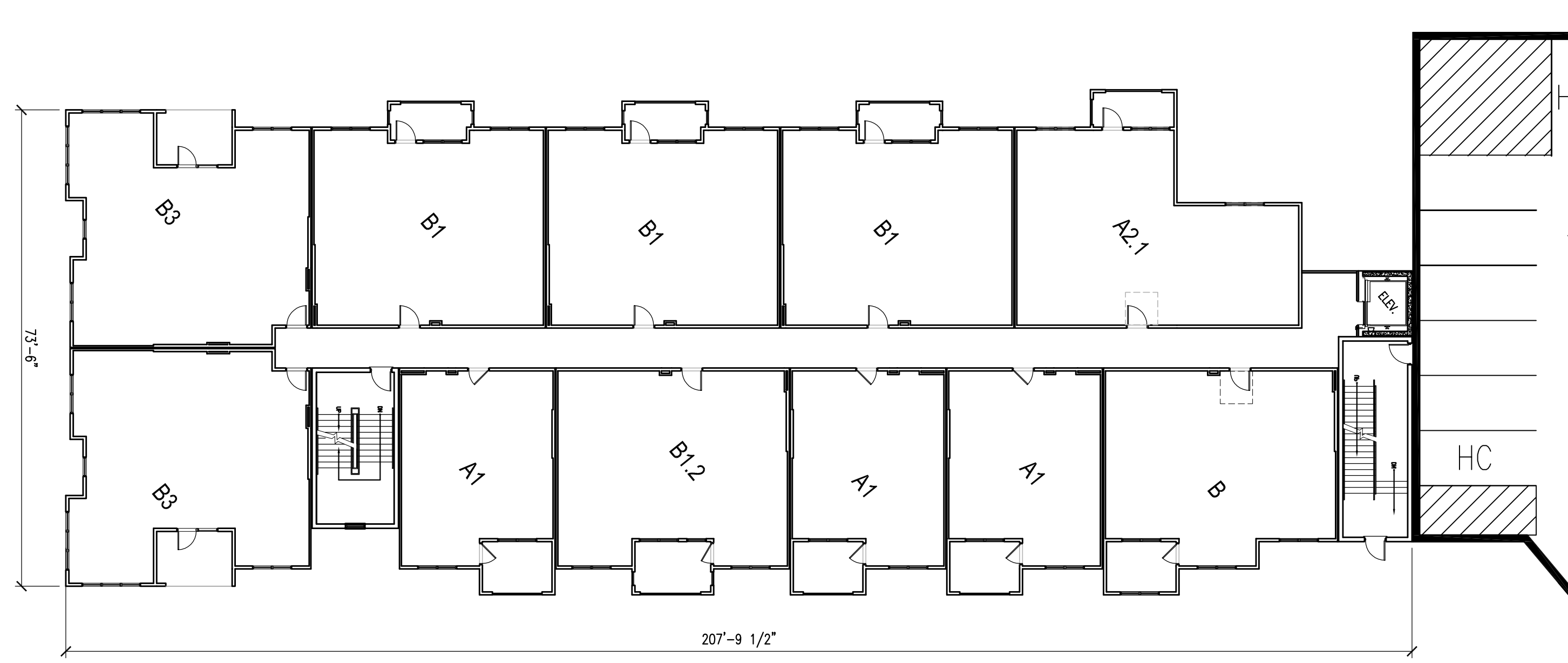
**C2.04**

FOR  
REVIEW  
ONLY



Tarheel Lodging, LLC & Unicorn Group Fifteen, LLC  
**Tarheel Lodging Redevelopment**  
 Chapel Hill, NC





BUILDING 4 - LEVEL 5  
SCALE: 1/16" = 1'-0"

2

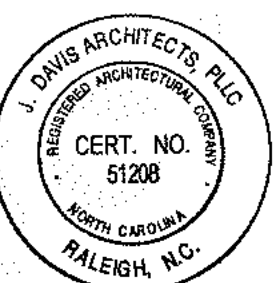


BUILDING 4 - LEVELS 2-4  
SCALE: 1/16" = 1'-0"

1

Tarheel Lodging, LLC & Unicorn Group Fifteen, LLC  
Tarheel Lodging Redevelopment  
Chapel Hill, NC

FOR  
REVIEW  
ONLY



PROJECT:	18030	DATE
ISSUE:	CDC SET	07.20.2018
REVISIONS:		
DRAWN BY:		
CHECKED BY:		
CONTENT:	BUILDING PLANS	

C2.05

7/18/2018 5:46 PM I:\proj\18030\_Tarheel\_Lodging\_Redevelopment\4a\_ARCHITECTURE\_Sheets\C2.06.dwg



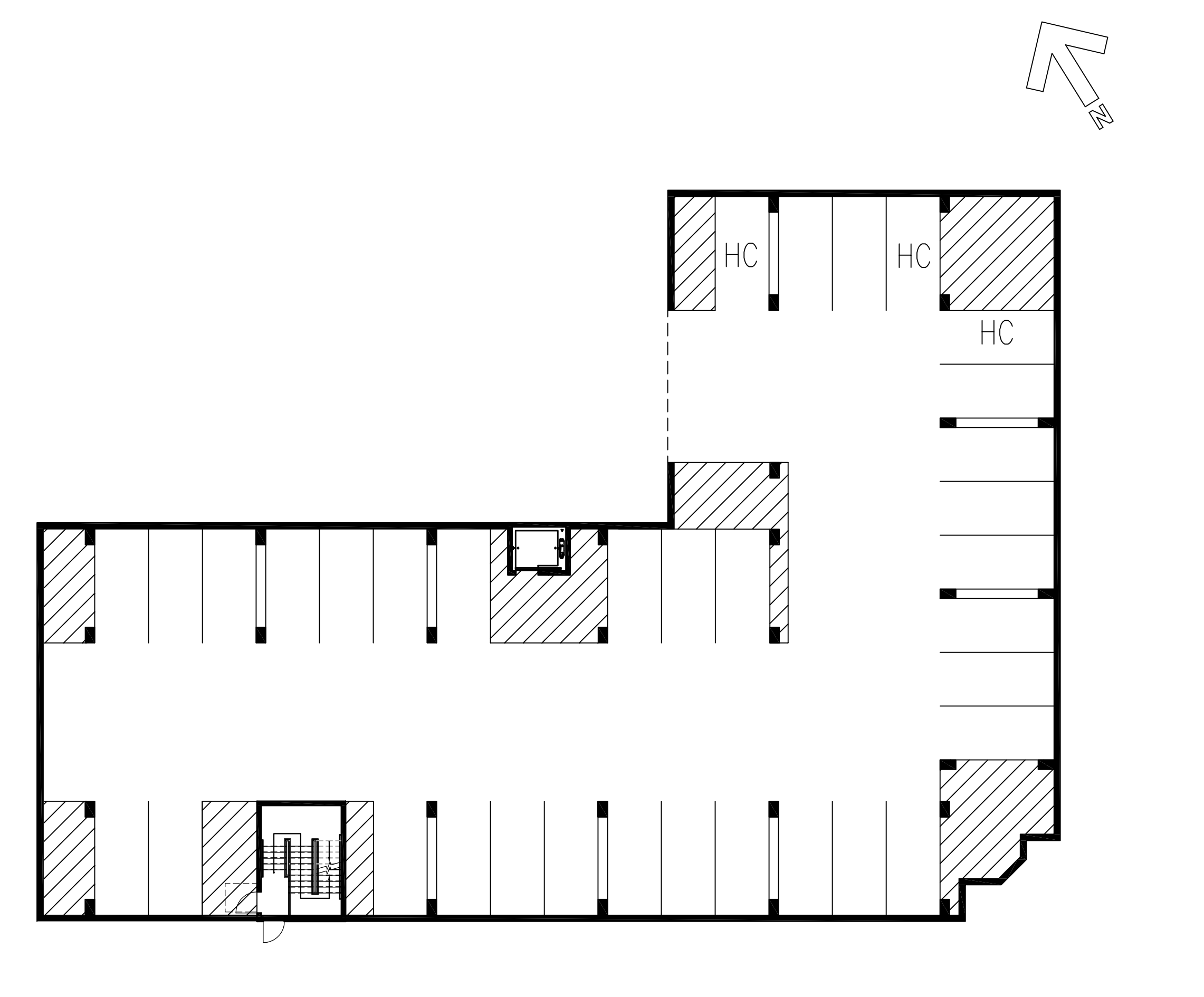
**BUILDING 5 - LEVEL 2**  
SCALE: 1/16" = 1'-0"

2



**BUILDING 5 - LEVELS 3-4**  
SCALE: 1/16" = 1'-0"

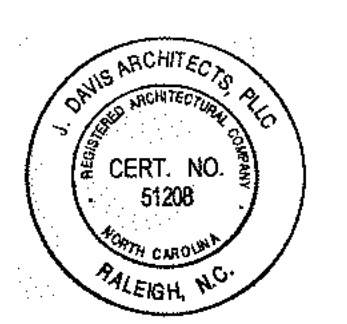
3



**BUILDING 5 - LEVEL 1**  
SCALE: 1/16" = 1'-0"

1

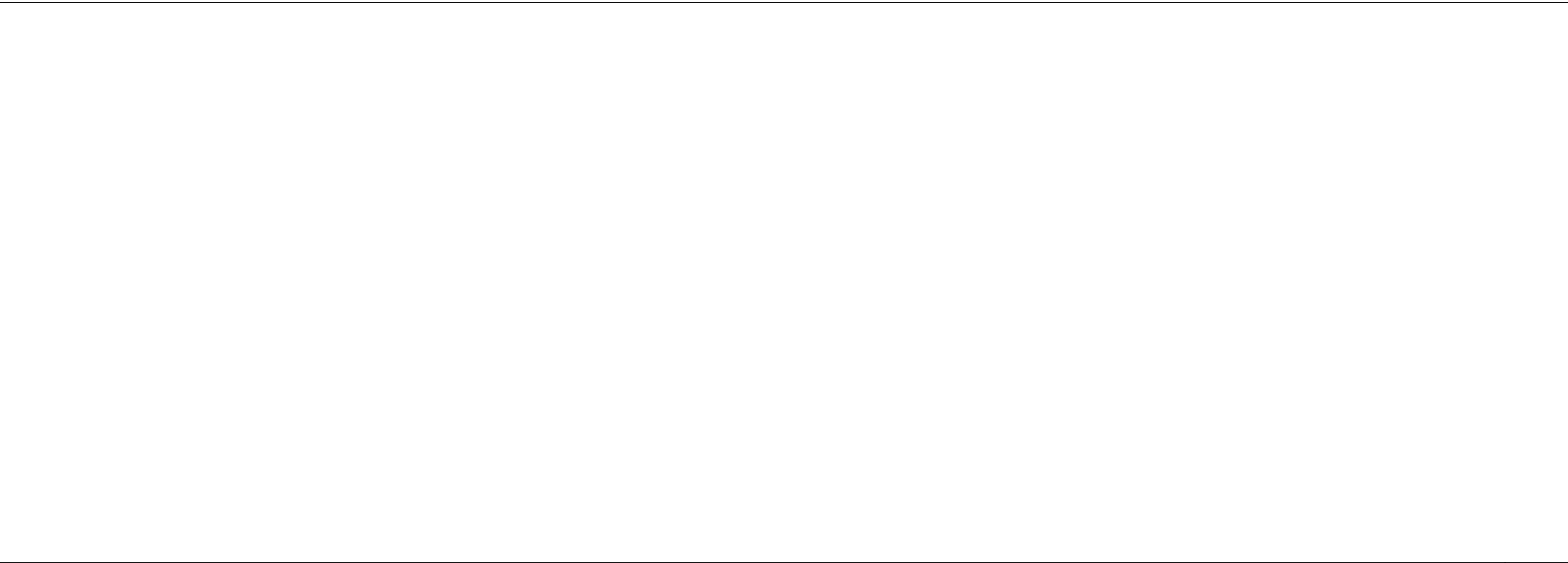
FOR REVIEW ONLY



PROJECT:	18030	DATE
ISSUE:	CDC SET	07.09.2018
REVISIONS:		
DRAWN BY:		
CHECKED BY:		
CONTENT:	BUILDING PLANS	

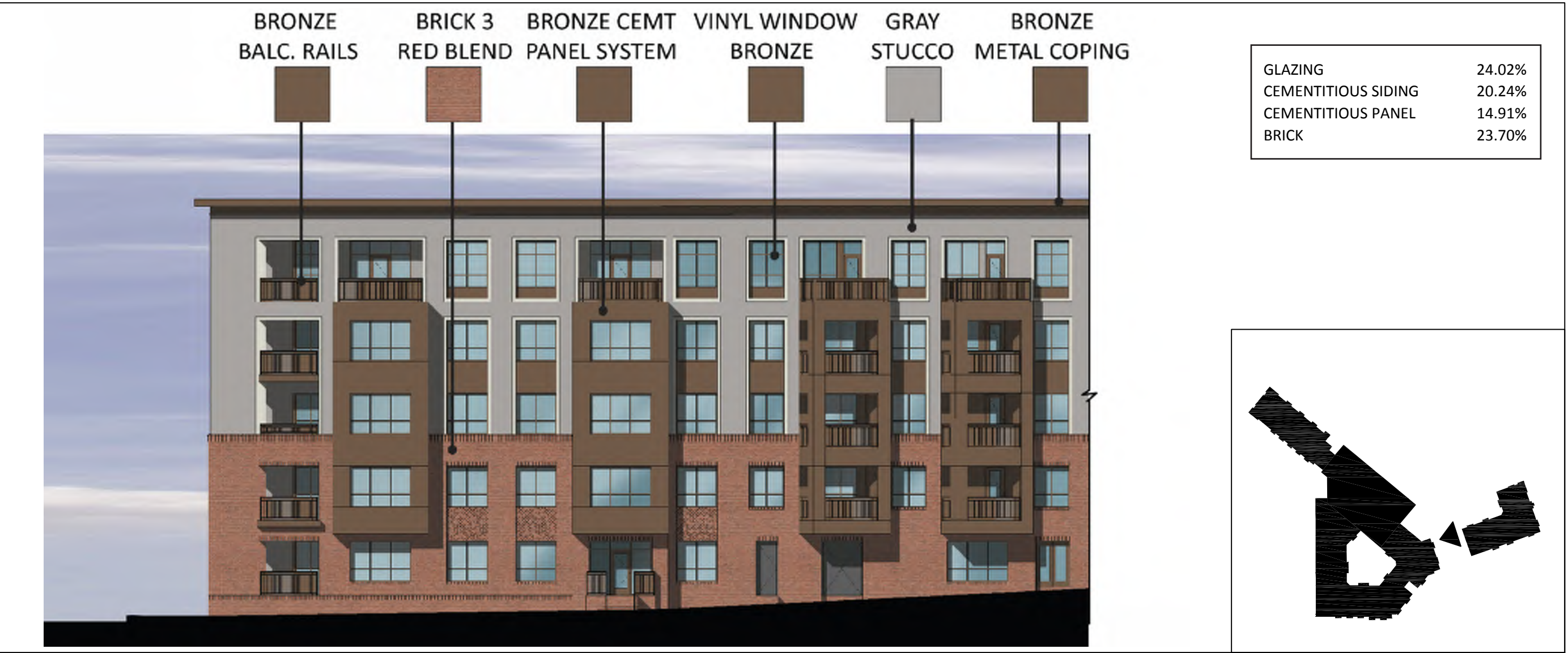
©2018 JDAVIS ARCHITECTS EXPRESSLY RESERVES ITS COMMON LAW COPYRIGHT AND OTHER PROPERTY RIGHTS IN THESE PLANS. THESE PLANS ARE NOT TO BE REPRODUCED, CHANGED OR COPIED IN ANY FORM OR MANNER WHATSOEVER, NOR ARE THEY TO BE ASSIGNED TO ANY THIRD PARTY WITHOUT FIRST OBTAINING THE EXPRESSED WRITTEN PERMISSION AND CONSENT OF JDAVIS ARCHITECTS, PLLC

7/19/2018 10:11 AM T:\Bros\18030\_Tarheel\_Lodging\_Redevelopment\4a\_ARCHITECTURE\_Sheets\C3.01-C3.02.dwg



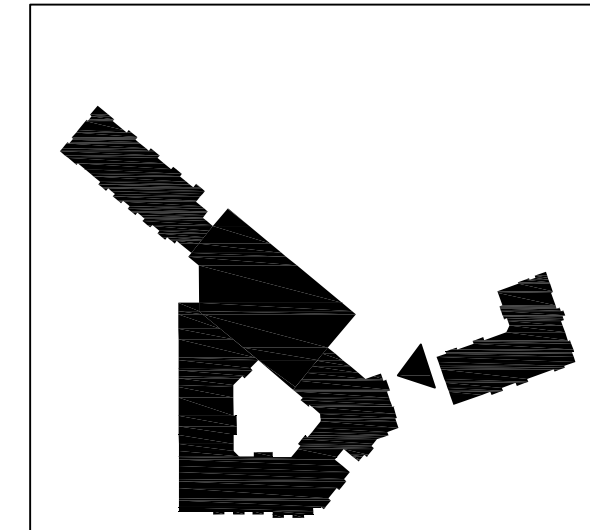
GLAZING	27.67%
CEMENTITIOUS SIDING	11.10%
CEMENTITIOUS PANEL	15.90%
BRICK	32.59%

DARK GRAY CEMENT PANEL SYSTEM  
 VINYL WINDOW GRAY/BLACK  
 GRAY/BLACK BALC. RAILS  
 WOOD GRAIN CEMENT SIDING  
 GRAY/BLACK METAL COPING  
 BRICK 1 TAN/BEIGE  
 BRICK 2 DARK GRAY BLEND



GLAZING	24.02%
CEMENTITIOUS SIDING	20.24%
CEMENTITIOUS PANEL	14.91%
BRICK	23.70%

BRONZE BALC. RAILS  
 BRICK 3 RED BLEND  
 BRONZE CEMENT PANEL SYSTEM  
 VINYL WINDOW BRONZE  
 GRAY STUCCO  
 BRONZE METAL COPING

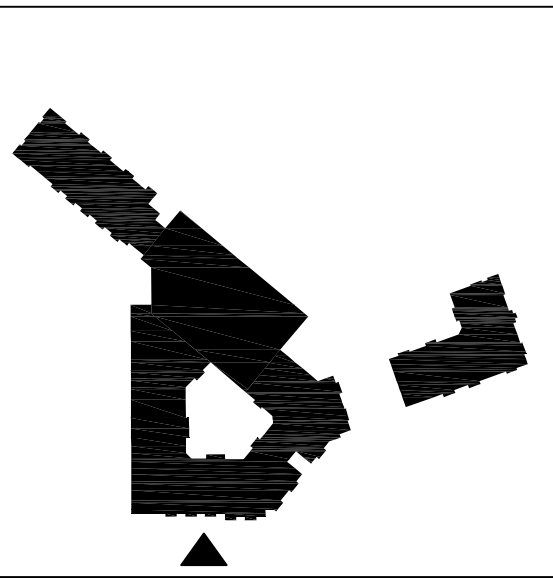


BUILDING 3 ELEVATION - STREET 2  
 SCALE: 1/16" = 1'-0"

NOT USED  
 SCALE: N.T.S.

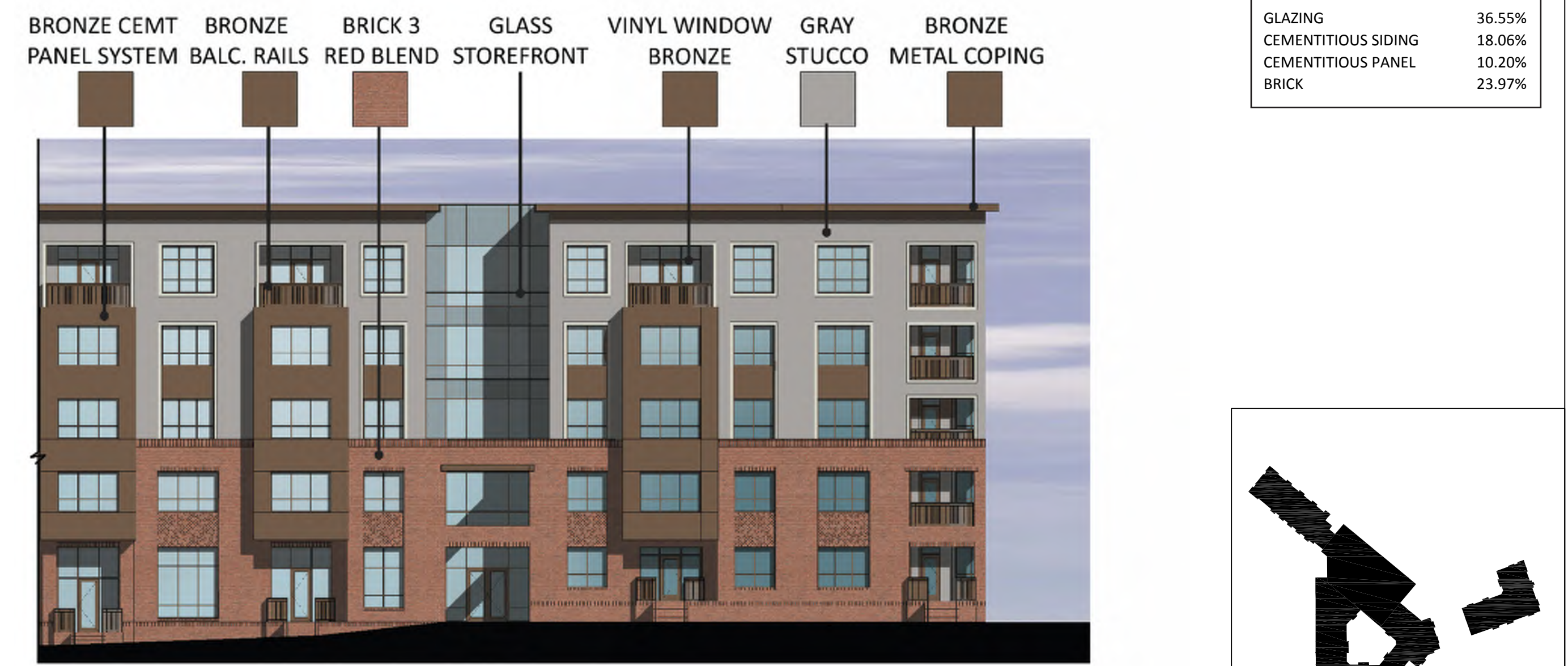
5

4



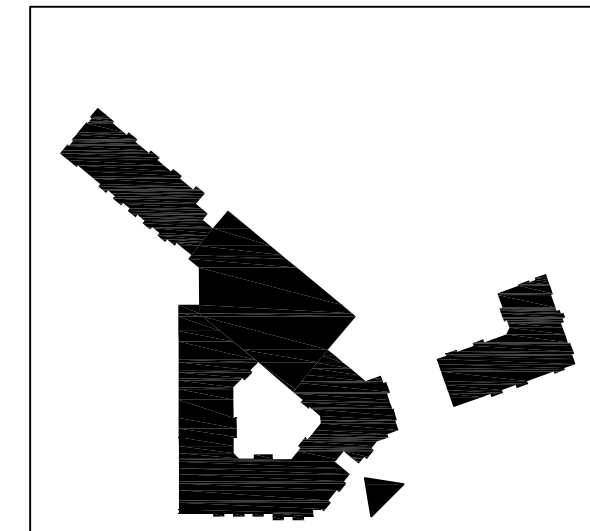
BUILDING 3 ELEVATION A - NOVUS LANE  
 SCALE: 1/16" = 1'-0"

3



GLAZING	36.55%
CEMENTITIOUS SIDING	18.06%
CEMENTITIOUS PANEL	10.20%
BRICK	23.97%

BRONZE CEMENT PANEL SYSTEM  
 BRONZE BALC. RAILS  
 BRICK 3 RED BLEND  
 GLASS STOREFRONT  
 VINYL WINDOW BRONZE  
 GRAY STUCCO  
 BRONZE METAL COPING



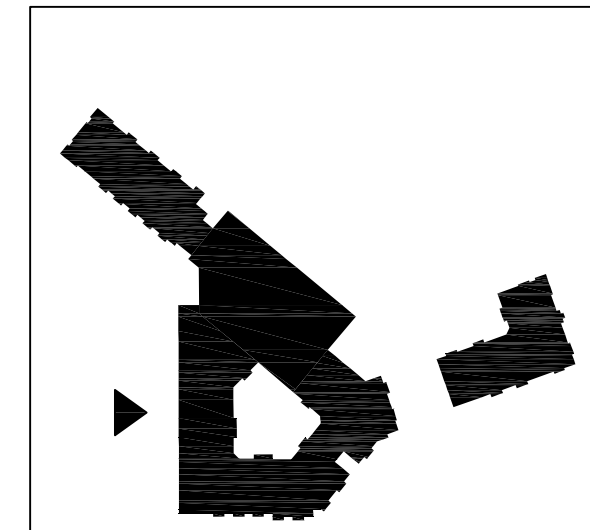
BUILDING 3 ELEVATION B - NOVUS LANE  
 SCALE: 1/16" = 1'-0"

2



GLAZING	25.11%
CEMENTITIOUS SIDING	8.81%
CEMENTITIOUS PANEL	10.52%
BRICK	17.55%

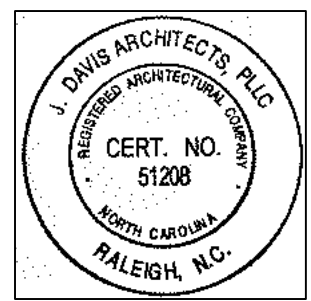
SCULPTURAL OR GRAPHIC PUBLIC ART  
 STOREFRONT BLACK ANODIZED  
 GRAY/BLACK STEEL LINTEL  
 VINYL WINDOW GRAY/BLACK  
 BRICK 2 DARK GRAY BLEND  
 WOOD GRAIN CEMENT SIDING  
 GRAY/BLACK BALC. RAILS  
 BRICK 1 TAN/BEIGE  
 DARK GRAY CEMENT PANEL SYSTEM  
 PUBLIC ART MURAL



BUILDING 3 ELEVATION - STREET 1  
 SCALE: 1/16" = 1'-0"

1

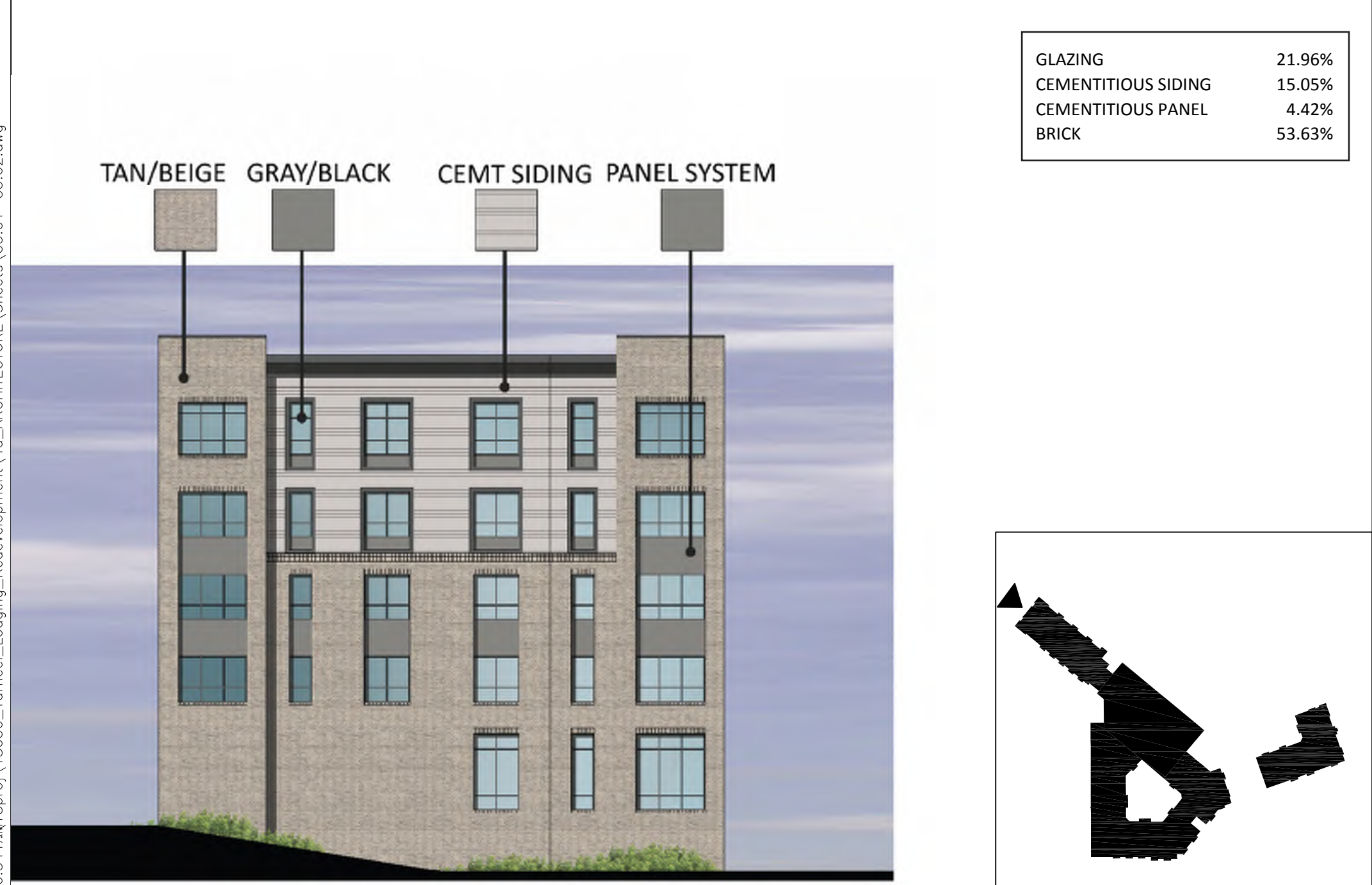
FOR REVIEW ONLY



©2018 JDAVIS ARCHITECTS EXPRESSLY RESERVES ITS COMMON LAW COPYRIGHT AND OTHER PROPERTY RIGHTS IN THESE PLANS. THESE PLANS ARE NOT TO BE REPRODUCED, CHANGED OR COPIED IN ANY FORM OR MANNER WHATSOEVER, NOR ARE THEY TO BE ASSIGNED TO ANY THIRD PARTY WITHOUT FIRST OBTAINING THE EXPRESSED WRITTEN PERMISSION AND CONSENT OF JDAVIS ARCHITECTS, P.L.L.C.

PROJECT:	18030	Start Date	
ISSUE:	CDC SET	07.20.2018	
REVISIONS:			
DRAWN BY:			
CHECKED BY:			
CONTENT:			

7/19/2018 10:34 AM I:\proj\18030\_Tarheel\_Lodging\_Redevelopment\4\_ARCHITECTURE\_Sheets\C3.01-C3.02.dwg



**BUILDING 4 ELEVATION - NORTHWEST**  
SCALE: 1/16" = 1'-0" **2**

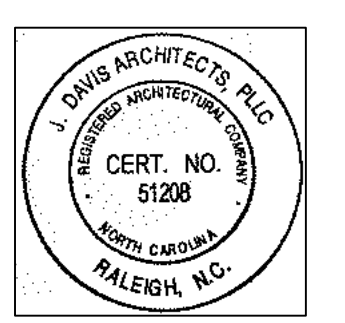
NOT USED  
SCALE: N.T.S. **4**



**BUILDING 4 ELEVATION - STREET 1**  
SCALE: 1/16" = 1'-0" **1**

NOT USED  
SCALE: N.T.S. **3**

FOR REVIEW ONLY



PROJECT:	18030	Start Date
ISSUE:	CDC SET	07.20.2018
REVISIONS:		
DRAWN BY:		
CHECKED BY:		
CONTENT:		

©2018 J. DAVIS ARCHITECTS EXPRESSLY RESERVES ITS COMMON LAW COPYRIGHT AND OTHER PROPERTY RIGHTS IN THESE PLANS. THESE PLANS ARE NOT TO BE REPRODUCED, CHANGED OR COPIED IN ANY FORM OR MANNER WHATSOEVER, NOR ARE THEY TO BE ASSIGNED TO ANY THIRD PARTY WITHOUT FIRST OBTAINING THE EXPRESSED WRITTEN PERMISSION AND CONSENT OF J. DAVIS ARCHITECTS, PLLC.

Tarheel Lodging, LLC & Unicorn Group Fifteen, LLC  
**Tarheel Lodging Redevelopment**  
Chapel Hill, NC





7/19/2018 11:13 AM J:\18030\_Torheel\_Lodging\_Redevelopment\4a\_ARCHITECTURE\_Sheets\C3.01-C3.02.dwg



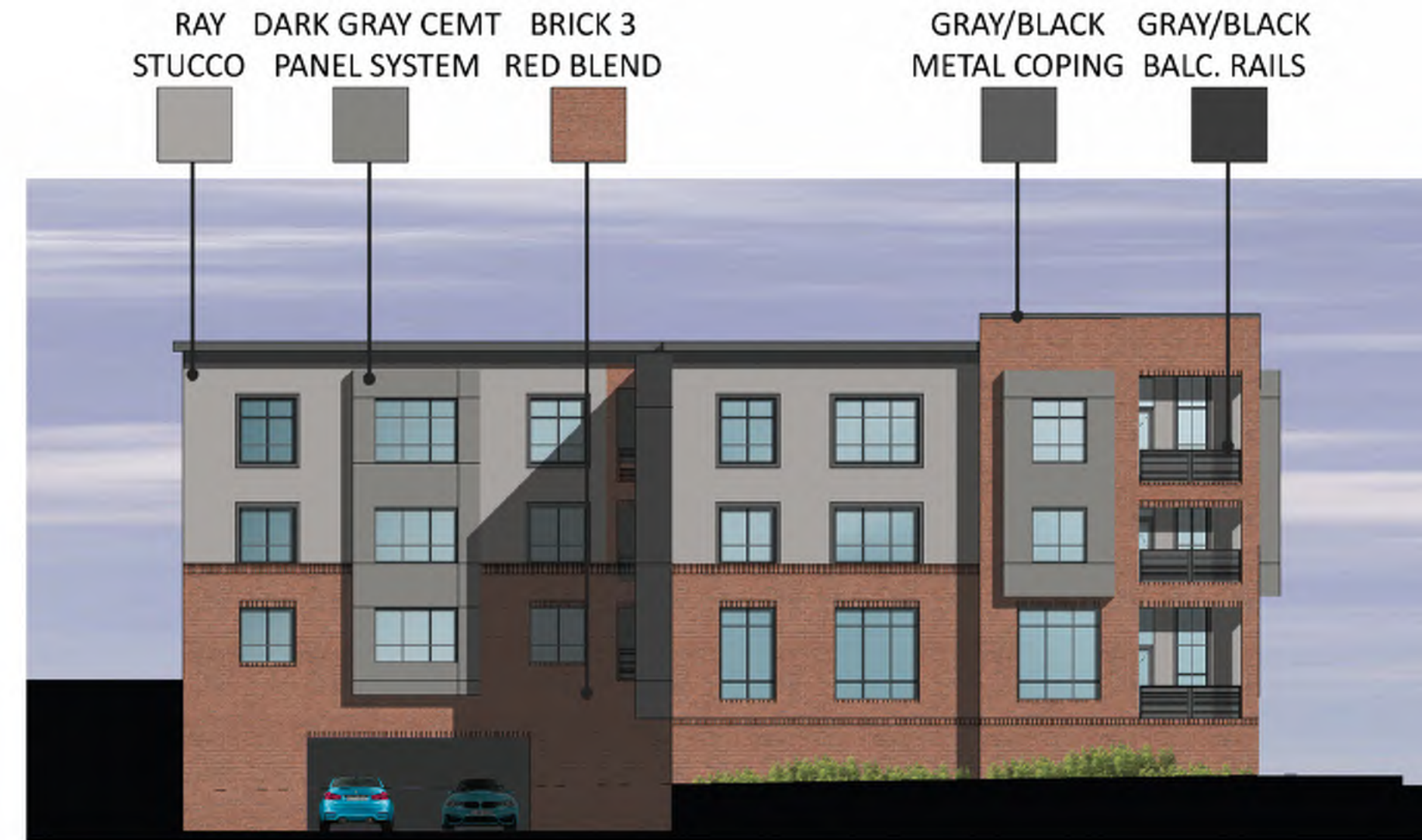
GLAZING	28.08%
CEMENTITIOUS SIDING	9.48%
CEMENTITIOUS PANEL	8.35%
BRICK	47.69%

**BUILDING 5 ELEVATION - NOVUS LANE**  
SCALE: 1/16" = 1'-0" 2



GLAZING	27.72%
CEMENTITIOUS SIDING	9.09%
CEMENTITIOUS PANEL	13.77%
BRICK	53.74%

**BUILDING 5 ELEVATION - LEGION ROAD**  
SCALE: 1/16" = 1'-0" 1

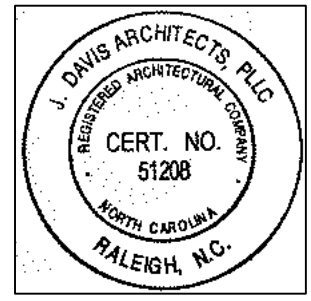


GLAZING	17.65%
CEMENTITIOUS SIDING	16.87%
CEMENTITIOUS PANEL	7.62%
BRICK	45.20%

**BUILDING 5 ELEVATION - STREET 2**  
SCALE: 1/16" = 1'-0" 3

NOT USED  
SCALE: N.T.S. 5

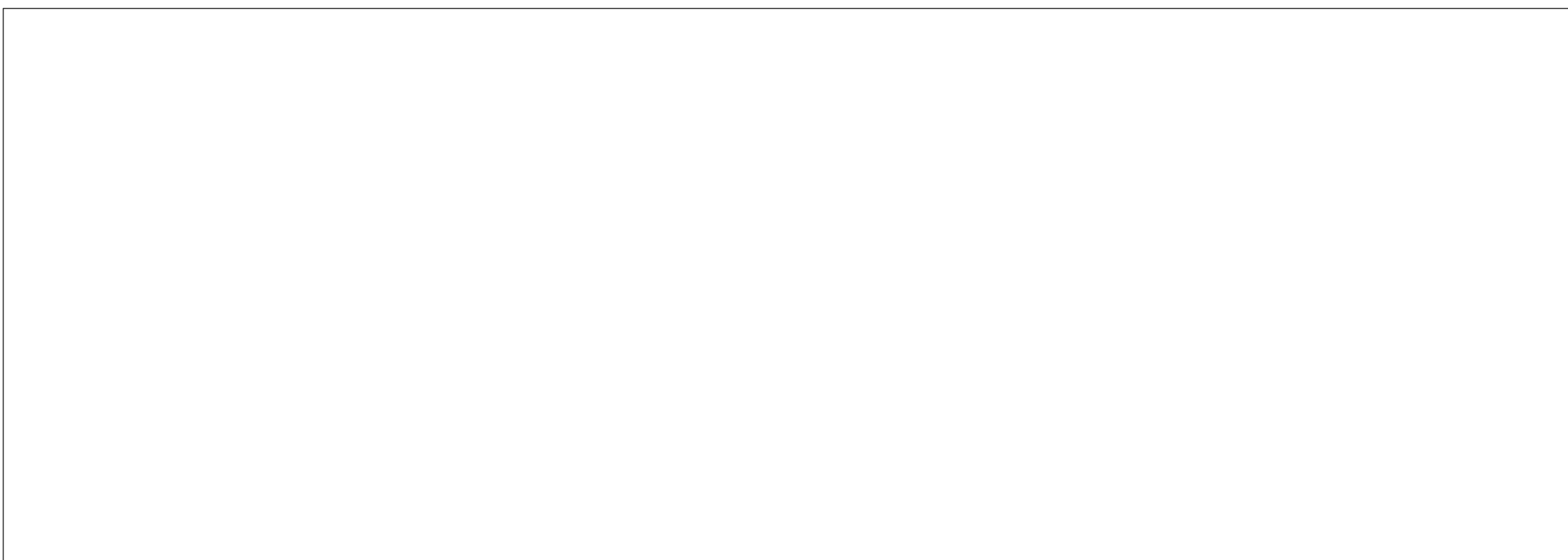
FOR REVIEW ONLY



©2018 J. DAVIS ARCHITECTS EXPRESSLY RESERVES ITS COMMON LAW COPYRIGHT AND OTHER PROPERTY RIGHTS IN THESE PLANS. THESE PLANS ARE NOT TO BE REPRODUCED, CHANGED OR COPIED IN ANY FORM OR MANNER WHATSOEVER, NOR ARE THEY TO BE ASSIGNED TO ANY THIRD PARTY WITHOUT FIRST OBTAINING THE EXPRESSED WRITTEN PERMISSION AND CONSENT OF J. DAVIS ARCHITECTS, P.L.L.C.

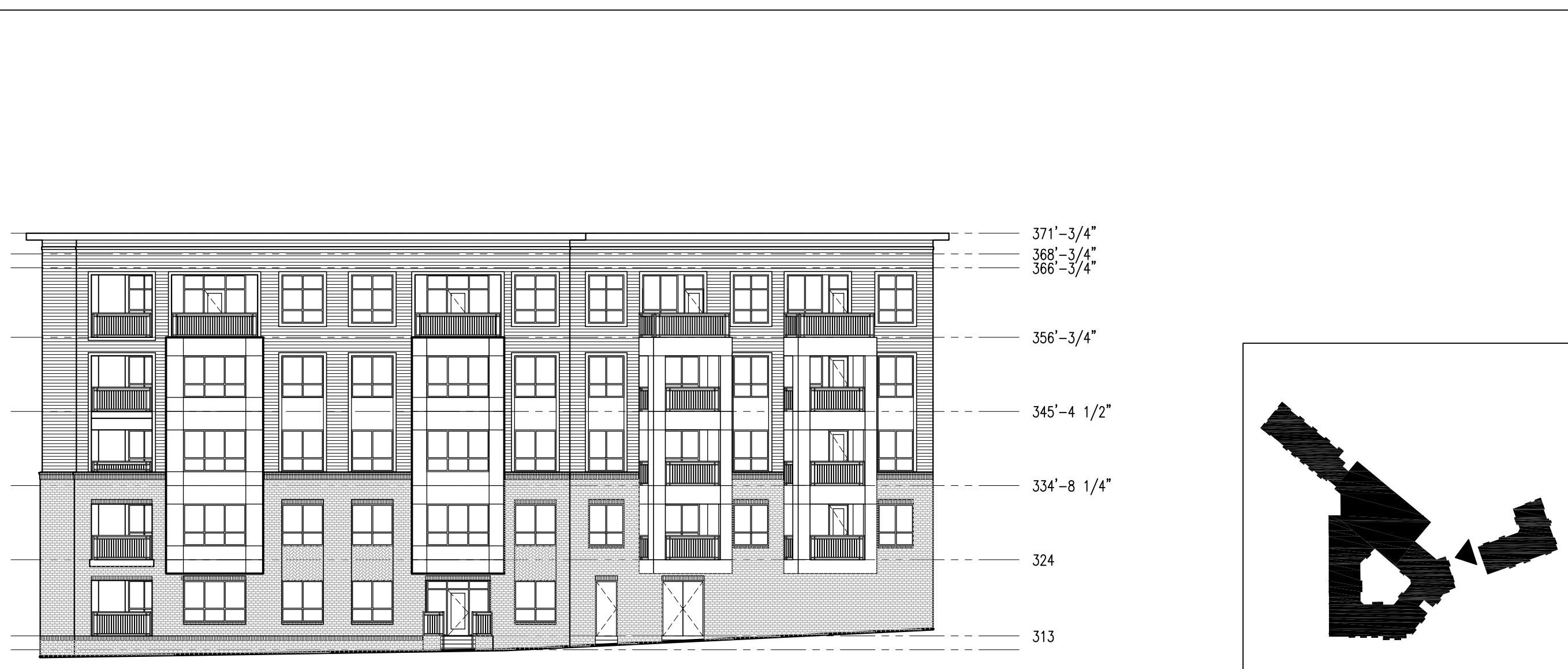
PROJECT:	18030	Start Date
ISSUE:	CDC SET	07.20.2018
REVISIONS:		
DRAWN BY:		
CHECKED BY:		
CONTENT:		

7/19/2018 4:18 PM J:\Bproj\18030\_Tarheel\_Lodging\_Redevelopment\40\_ARCHITECTURE\_Sheets\C3.01-C3.04.dwg



NOT USED  
SCALE: N.T.S.

5



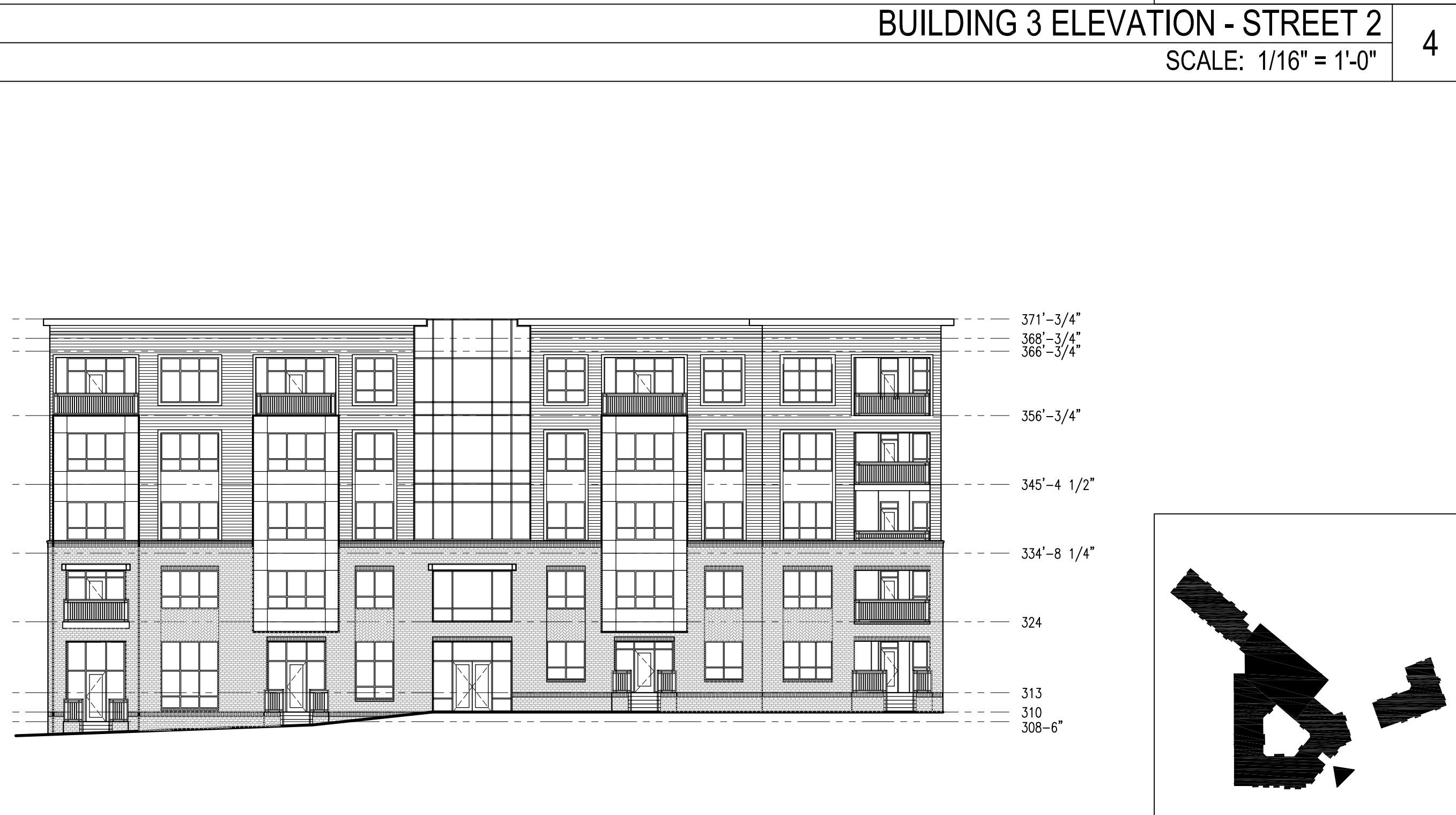
BUILDING 3 ELEVATION - STREET 2  
SCALE: 1/16" = 1'-0"

4



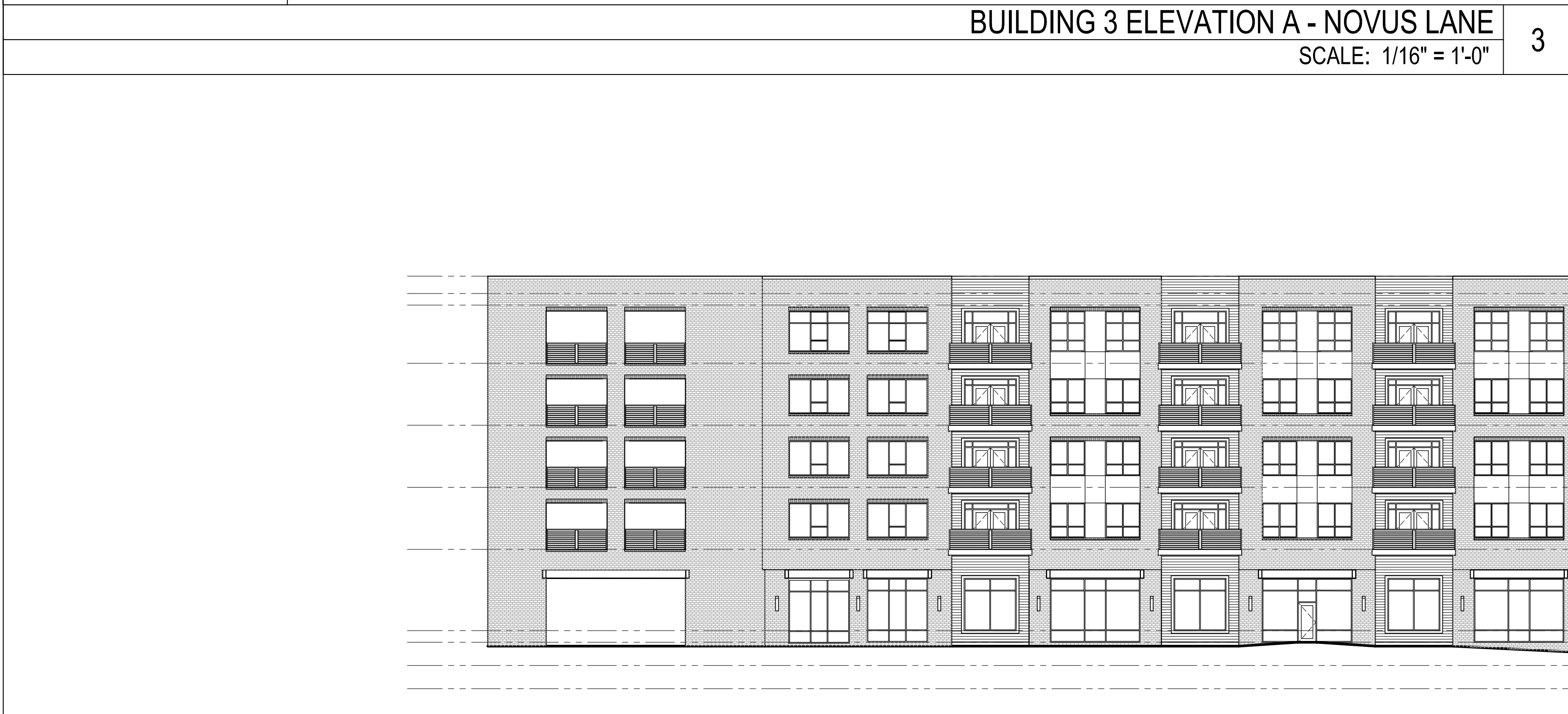
BUILDING 3 ELEVATION A - NOVUS LANE  
SCALE: 1/16" = 1'-0"

3



BUILDING 3 ELEVATION B - NOVUS LANE  
SCALE: 1/16" = 1'-0"

2



BUILDING 3 ELEVATION - STREET 1  
SCALE: 1/16" = 1'-0"

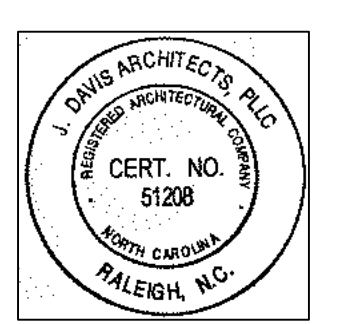
1

©2018 DAVIS ARCHITECTS EXPRESSLY RESERVES ITS COMMON LAW COPYRIGHT AND OTHER PROPERTY RIGHTS IN THESE PLANS. THESE PLANS ARE NOT TO BE REPRODUCED, CHANGED OR COPIED IN ANY FORM OR MANNER WHATSOEVER, NOR ARE THEY TO BE ASSIGNED TO ANY THIRD PARTY WITHOUT FIRST OBTAINING THE EXPRESSED WRITTEN PERMISSION AND CONSENT OF DAVIS ARCHITECTS, PLLC

**JDAVIS**  
510 South Wilmington St., Raleigh, NC 27601 | tel 919.835.1500  
1518 Walnut St. Suite 1308 | Philadelphia, PA 19102 | tel 215.545.0121

Tarheel Lodging, LLC & Unicorn Group Fifteen, LLC  
**Tarheel Lodging Redevelopment**  
Chapel Hill, NC

FOR  
REVIEW  
ONLY



PROJECT:	18030	DATE
ISSUE:	CDC SET	07.20.2018
REVISIONS:		
DRAWN BY:		
CHECKED BY:		
CONTENT:		

C3.04

7/19/2018 12:05 PM Bproj\18030\_Tarheel\_Lodging\_Redevelopment\40\_ARCHITECTURE\Sheets\C3.01-C3.02.dwg



**BUILDING 4 ELEVATION - NORTHWEST**  
SCALE: 1/16" = 1'-0"

2

NOT USED  
SCALE: N.T.S.

4



**BUILDING 4 ELEVATION - STREET 1**  
SCALE: 1/16" = 1'-0"

1

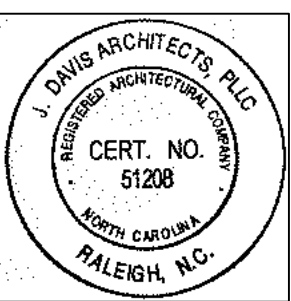


**BUILDING 4 ELEVATION - REAR**  
SCALE: 1/16" = 1'-0"

3

C3.05

FOR  
REVIEW  
ONLY



PROJECT:	18030	DATE
ISSUE:	CDC SET	07.20.2018
REVISIONS:		
DRAWN BY:		
CHECKED BY:		
CONTENT:		

Tarheel Lodging, LLC & Unicorn Group Fifteen, LLC  
**Tarheel Lodging Redevelopment**  
Chapel Hill, NC

**JDAVIS**  
510 South Wilmington St. | Raleigh, NC 27601 | tel 919.835.1500  
1518 Walnut St. Suite 1308 | Philadelphia, PA 19102 | tel 215.545.0121

©2018 J. DAVIS ARCHITECTS EXPRESSLY RESERVES ITS COMMON LAW COPYRIGHT AND OTHER PROPERTY RIGHTS IN THESE PLANS. THESE PLANS ARE NOT TO BE REPRODUCED, CHANGED OR COPIED IN ANY FORM OR MANNER WHATSOEVER, NOR ARE THEY TO BE ASSIGNED TO ANY THIRD PARTY WITHOUT FIRST OBTAINING THE EXPRESSED WRITTEN PERMISSION AND CONSENT OF J. DAVIS ARCHITECTS, PLLC.

7/19/2018 12:07 PM B:\proj\18030\_Tarheel\_Lodging\_Redevelopment\4a\_ARCHITECTURE\Sheets\C3.01-C3.02.dwg



NOT USED  
SCALE: N.T.S.

6



BUILDING 5 ELEVATION - REAR  
SCALE: N.T.S.

4



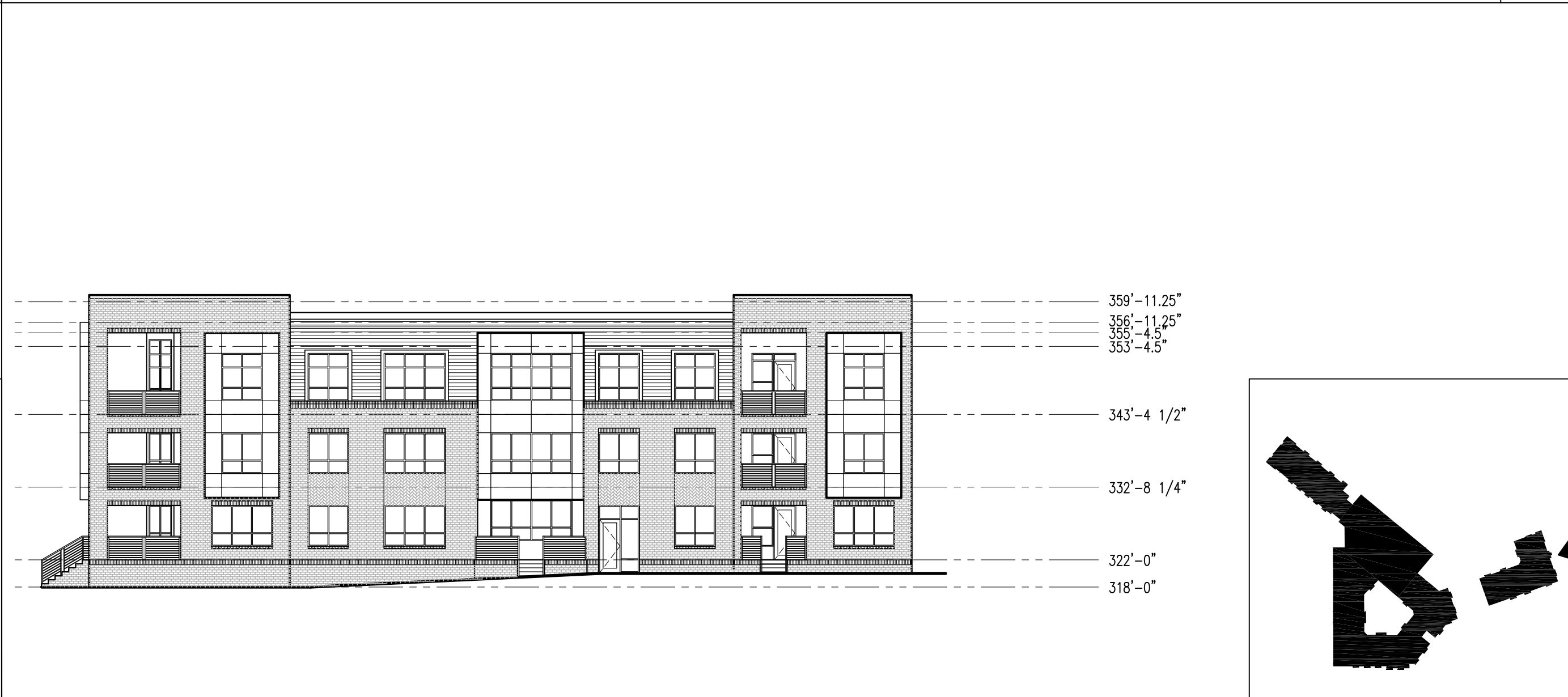
BUILDING 5 ELEVATION - STREET 2  
SCALE: 1/16" = 1'-0"

3



BUILDING 5 ELEVATION - NOVUS LANE  
SCALE: 1/16" = 1'-0"

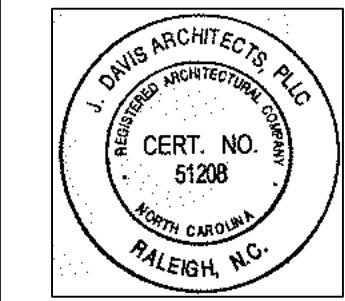
2



BUILDING 5 ELEVATION - LEGION ROAD  
SCALE: 1/16" = 1'-0"

1

FOR REVIEW ONLY



PROJECT:	18030	DATE
ISSUE:	CDC SET	07.20.2018
REVISIONS:		
DRAWN BY:		
CHECKED BY:		
CONTENT:		

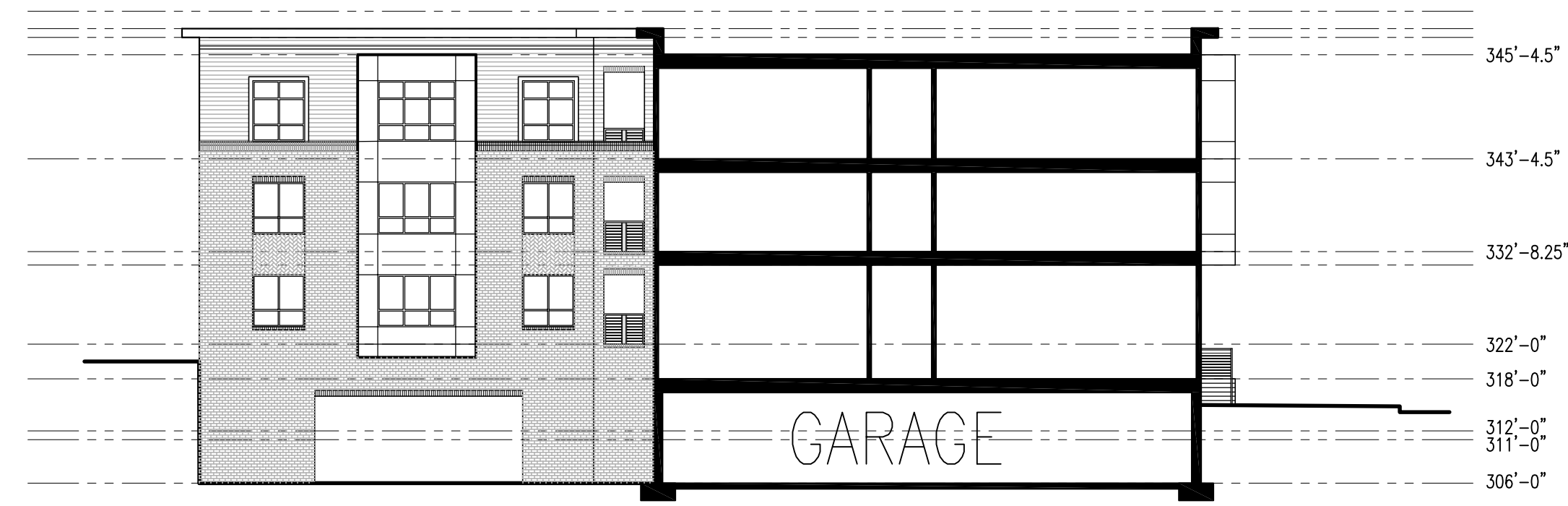
C3.06

Tarheel Lodging, LLC & Unicorn Group Fifteen, LLC  
Tarheel Lodging Redevelopment  
Chapel Hill, NC

**JDAVIS**  
510 South Wilmington St., Raleigh, NC 27601 | tel 919.835.1500  
1518 Walnut St. Suite 1308 | Philadelphia, PA 19102 | tel 215.545.0121

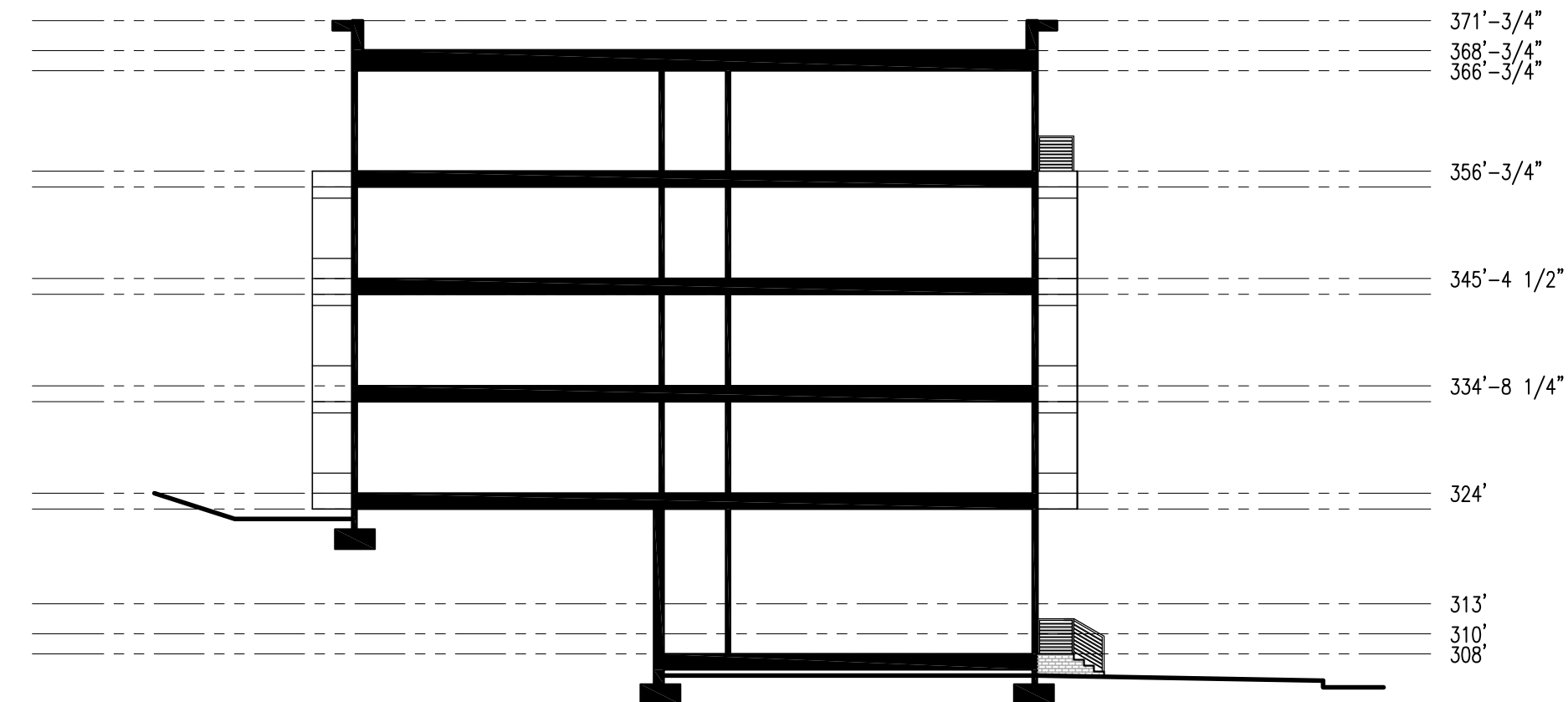
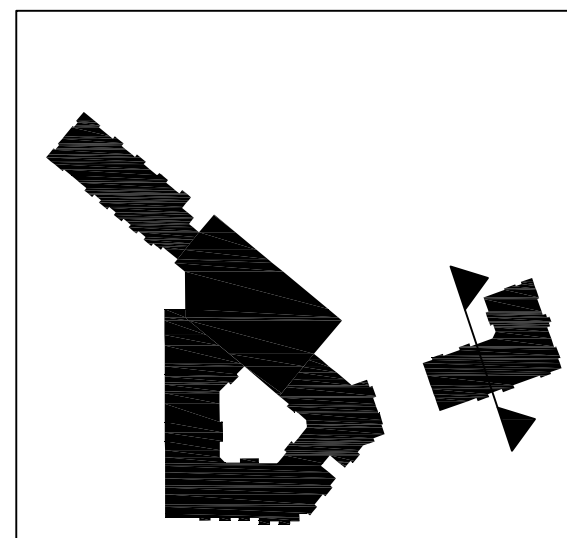
©2018 J. DAVIS ARCHITECTS EXPRESSLY RESERVES ITS COMMON LAW COPYRIGHT AND OTHER PROPERTY RIGHTS IN THESE PLANS. THESE PLANS ARE NOT TO BE REPRODUCED, CHANGED OR COPIED IN ANY FORM OR MANNER WHATSOEVER, NOR ARE THEY TO BE ASSIGNED TO ANY THIRD PARTY WITHOUT FIRST OBTAINING THE EXPRESSED WRITTEN PERMISSION AND CONSENT OF J. DAVIS ARCHITECTS, PLLC.

7/19/2018 12:03 PM (Bproj)\8030\_Tarheel\_Lodging\_Redevelopment\4a\_ARCHITECTURE\Sheets\C3.07.dwg



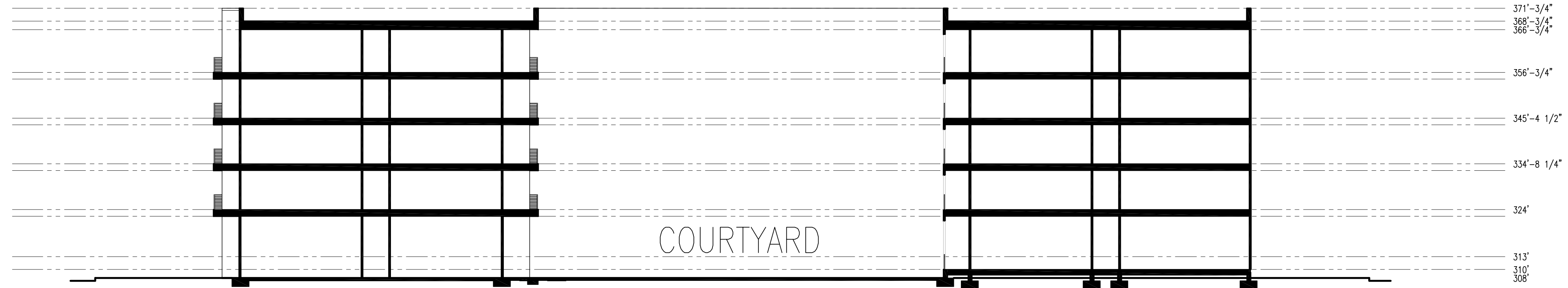
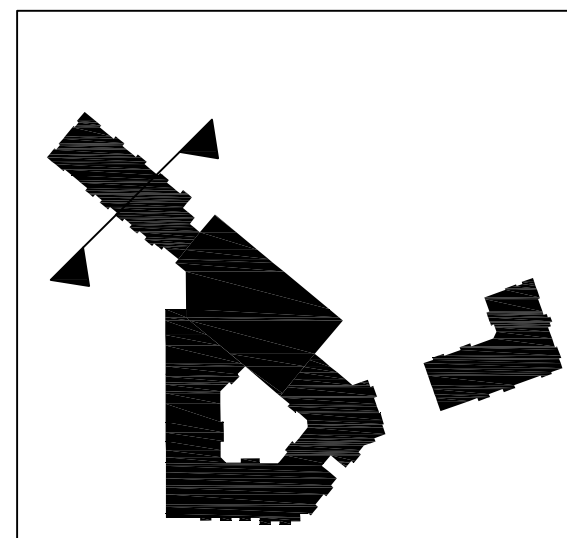
**BUILDING 5 - BUILDING SECTION**  
SCALE: 1/16" = 1'-0"

3



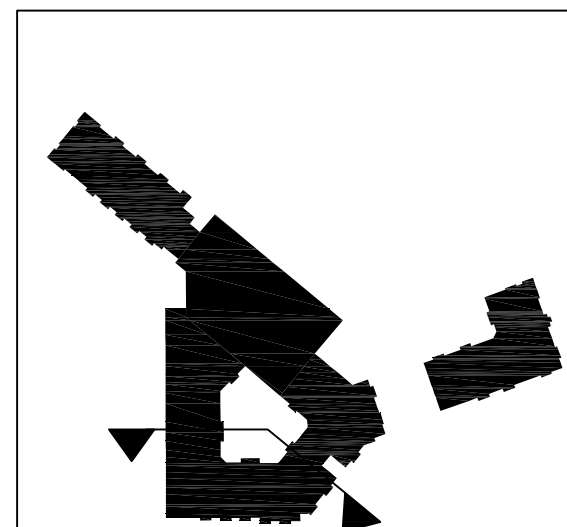
**BUILDING 4 - BUILDING SECTION**  
SCALE: 1/16" = 1'-0"

2



**BUILDING 3 - BUILDING SECTION**  
SCALE: 1/16" = 1'-0"

1



NOT USED  
SCALE: N.T.S.

4

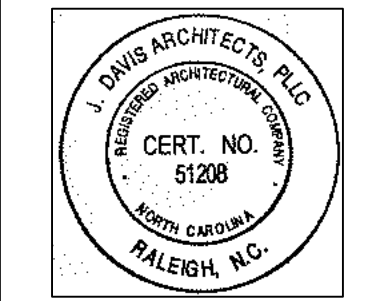
©2018 J.DAVIS ARCHITECTS RESERVES ITS COMMON LAW COPYRIGHT AND OTHER PROPERTY RIGHTS IN THESE PLANS. THESE PLANS ARE NOT TO BE REPRODUCED, CHANGED OR COPIED IN ANY FORM OR MANNER WHATSOEVER, NOR ARE THEY TO BE ASSIGNED TO ANY THIRD PARTY WITHOUT FIRST OBTAINING THE EXPRESSED WRITTEN PERMISSION AND CONSENT OF J.DAVIS ARCHITECTS, PLLC

C3.07

DRAWN BY:  
CHECKED BY:  
CONTENT:

REVISIONS:

PROJECT: 18030 Start Date  
ISSUE: CDC SET 07.20.2018



FOR REVIEW ONLY

Tarheel Lodging, LLC & Unicorn Group Fifteen, LLC  
Tarheel Lodging Redevelopment  
Chapel Hill, NC

**JDAVIS**  
510 South Wilmington St., Raleigh, NC 27601 | tel 919.835.1500  
1518 Walnut St. Suite 1308 | Philadelphia, PA 19102 | tel 215.545.0121