



THE CEDARS
OF CHAPEL HILL

A Life Plan Community

CHAPEL HILL, NC



CJMW ARCHITECTURE

Overlook Condominiums
July 22, 2025

Rendering



STREET PERSPECTIVE

Rendered Elevation



STREET ELEVATION

Site Plan

NOTE: NO PERIMETER BUFFERS ARE REQUIRED FOR THIS SITE.

NOTE: All plants specified on this sheet shall meet or exceed the Town of Chapel Hill's minimum requirements as noted below. Where plant sizes specified are not available, a smaller size may be substituted subject to approval by the landscape architect provided the minimum sizes noted below are met.

3.3 LANDSCAPE INSTALLATION AND MAINTENANCE SPECIFICATIONS

3.3.1 Materials Requirements

(a) Plant Materials:

The American Standard for Nursery Stock published by the American Society of Nurserymen should be used for determining caliper, heights, widths and ball sizes, for all plants.

Plant material should be free of any diseases, funguses or insect infestations.

Town standard minimum planting sizes are listed below. Larger sizes may be required, however, for specific landscape applications including parking lot screening.

Ground Cover: 2" pots

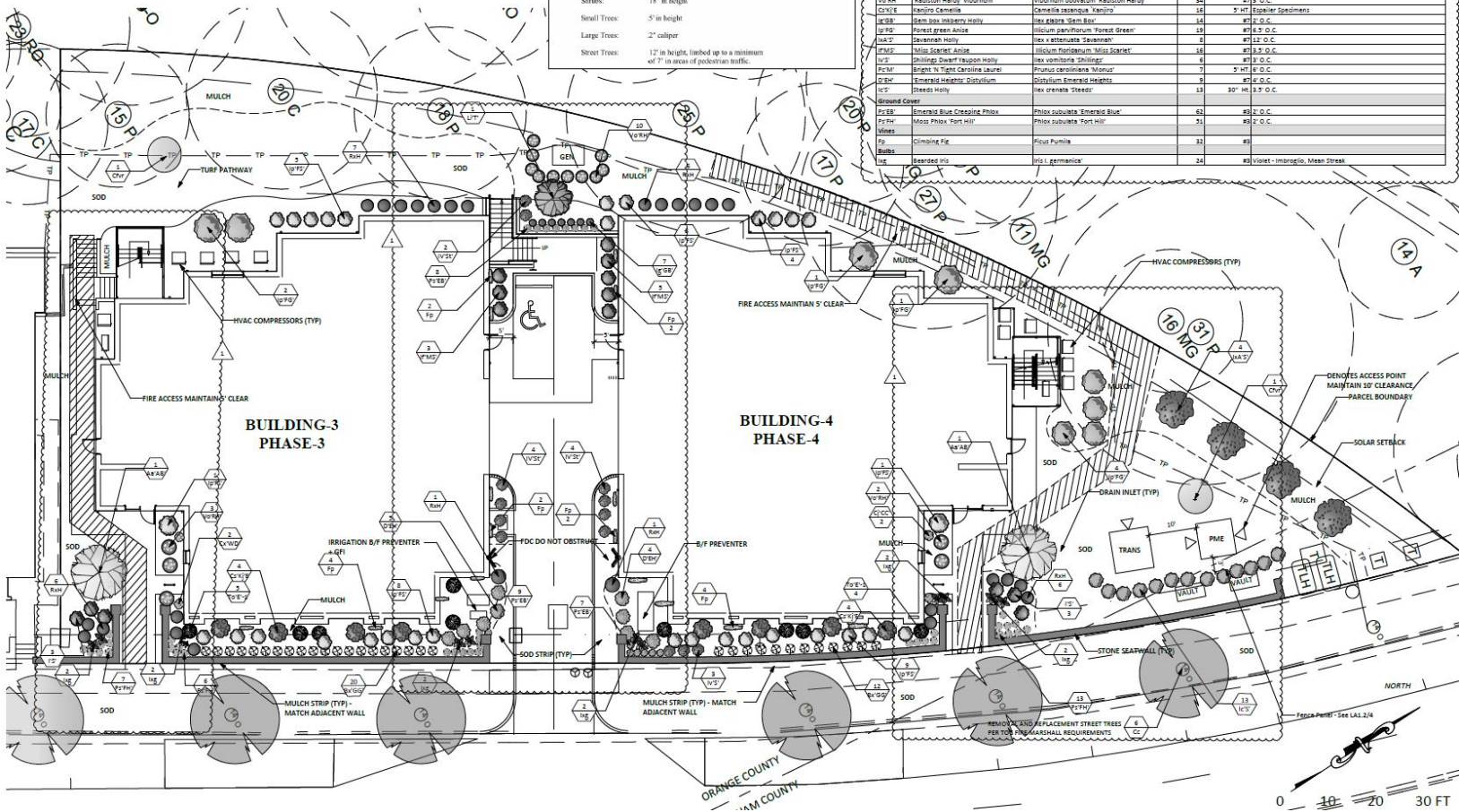
Shrubs: 18" in height

Small Trees: 5' in height

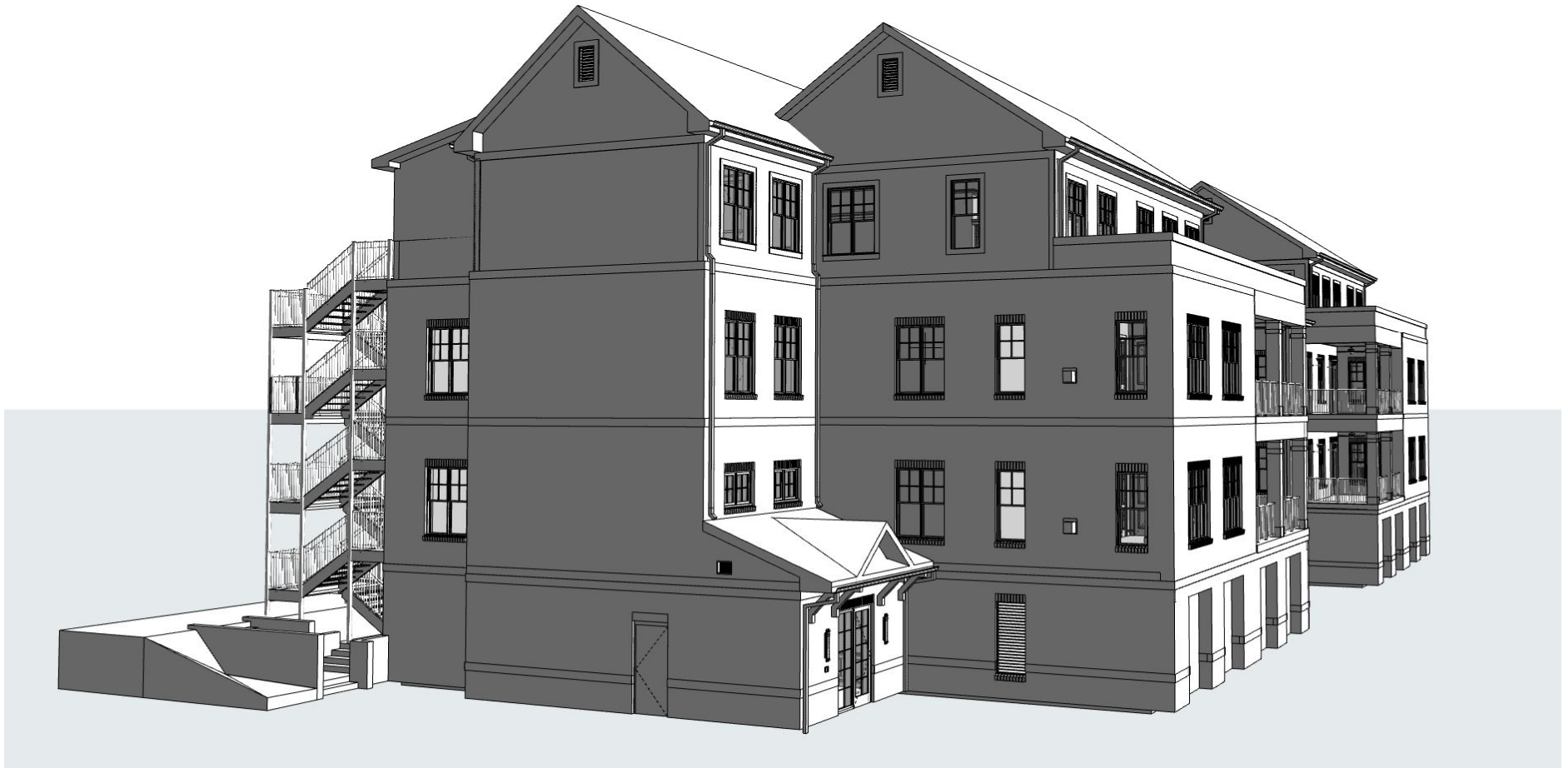
Large Trees: 2" caliper

Street Trees: 12" in height, linked up to a minimum of 7' in areas of pedestrian traffic.

Plant List					
ID	Common Name	Botanical Name	Qty	Scheduled Size	Remarks & Spacing
Trees					
JA AB	Autumn Brilliance Serviceberry	Amelanchier x grandiflora Autumn Brilliance	2	3" Cal.	Single Stem
LT T	Tussock Crane Myrtle	Myrica cerifolia x 'Tussock'	4	10'-12" in 9-Stem	
CH	Wink Redwing Dogwood	Cornus florida var. 'Wink'	2	2.5" Cal.	
CC	American Hornbeam, Ironwood	Opulus caroliniana	6	4" Cal.	Single-Stem, Space As Shown and 10' Min. to Streetlights
Shrubs					
GR SD	Green Gem Boxwood	Buxus x 'Green Gem' ('Winter Gem')	60	4" 2.5" O.C.	
TR E-L	Emerald Green Arborvitae	Thuja occidentalis 'Emerald'	18	6" HT	
CR WD	Winter's Dream Camellia - Eggplant	Camellia x 'Winter's Dream'	4	10 SA	
CC CC	Charles Cozoo Camellia - Eggplant	Camellia japonica 'Charles Cozoo'	4	10 SA	
FL SP	Florida Sunshine Anise	Illicium parviflorum 'Florida Sunshine'	30	41/2 3" O.C.	
RAH	Hybrid Tea Rose	Rosa x hybrid	34	4" 3" O.C.	
CT	Georgia Anise	Illicium Scutellaria	18	4" 3" O.C.	
VC SC	Shades Dwarf 'Vigorous Holly	Ilex vomitoria 'Shades'	32	4" 3" O.C.	
VR HR	Raustonia Hardy Viburnum	Viburnum coccineum 'Raustonia Hardy'	34	4" 3" O.C.	
CT VE	Virginia Camellia	Camellia japonica 'Virginia'	18	3" HT	Eggplant Specimens
CR SD	Green Gem Boxwood	Buxus x 'Green Gem'	18	4" 3" O.C.	
FL SP	Florida Sunshine Anise	Illicium parviflorum 'Florida Sunshine'	18	4" 3" O.C.	
RAH T	Seaspray Holly	Ilex x attenuata 'Seaspray'	8	4" 12" O.C.	
FL SP	Florida Sunshine Anise	Illicium parviflorum 'Florida Sunshine'	18	4" 3" O.C.	
VC SC	Shades Dwarf 'Vigorous Holly	Ilex vomitoria 'Shades'	8	4" 3" O.C.	
CT VE	Bright to Tight Carolina Laurel	Prunus caroliniana 'Manor'	7	3" HT	6" O.C.
CR SD	Emerald Green Boxwood	Buxus sempervirens 'Emerald'	8	4" 3" O.C.	
CC CC	Charles Cozoo Camellia	Camellia japonica 'Charles Cozoo'	13	30" HT	3" O.C.
Ground Cover					
CR SD	Emerald Blue Creeping Phlox	Phlox subulata 'Emerald Blue'	60	4" 2" O.C.	
VC SC	Wink Redwing Dogwood	Cornus florida 'Wink'	11	4" 2" O.C.	
FL SP	Climbing Fig	Ficus Pumila	32	8"	
RAH	Seaspray Holly	Ilex x attenuata 'Seaspray'	24	4" 3" O.C.	4" 3" O.C. - Improprio, Mean Street



3-D Model Building 3



3-D Model Building 3



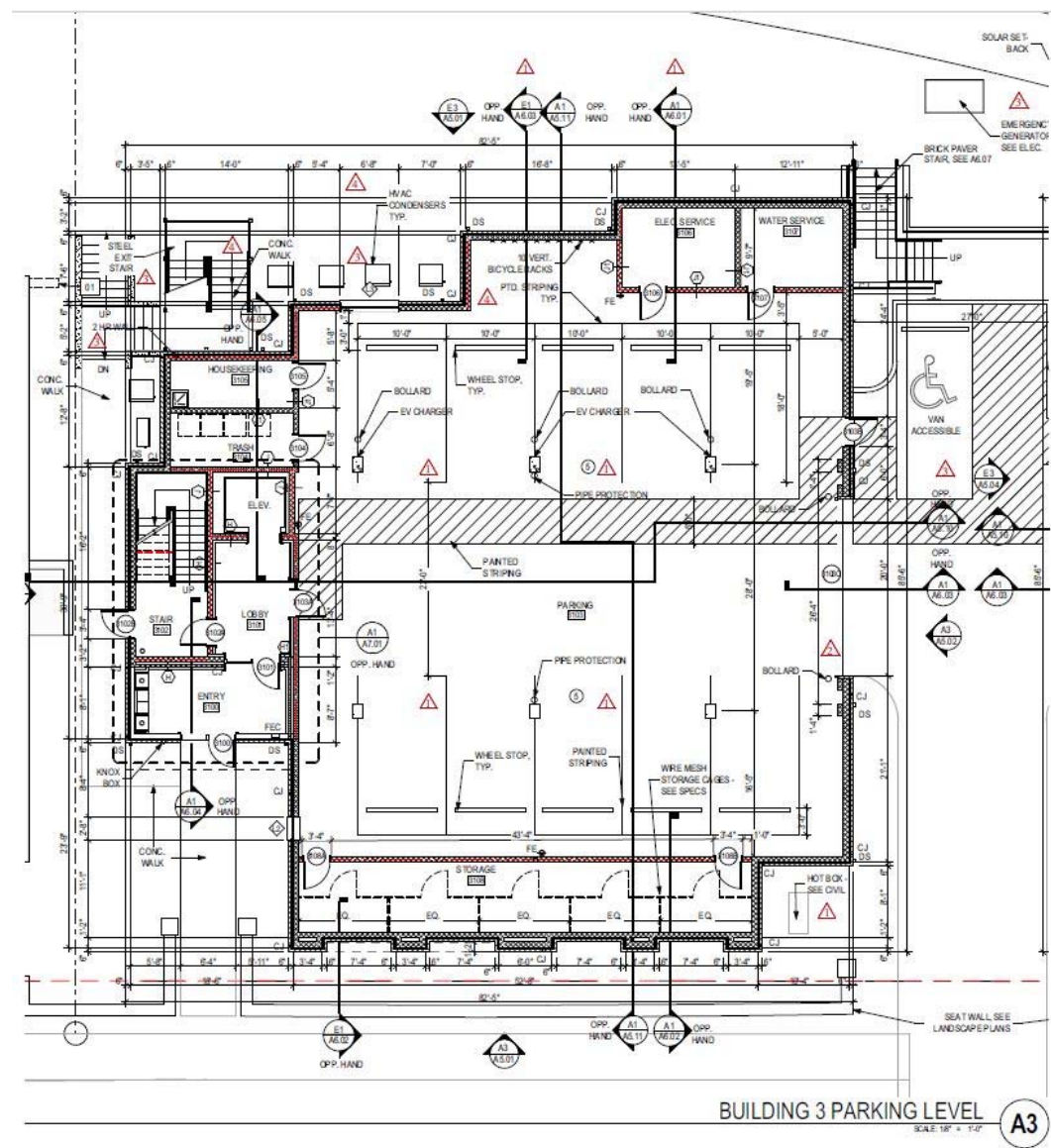
3-D Model Building 4



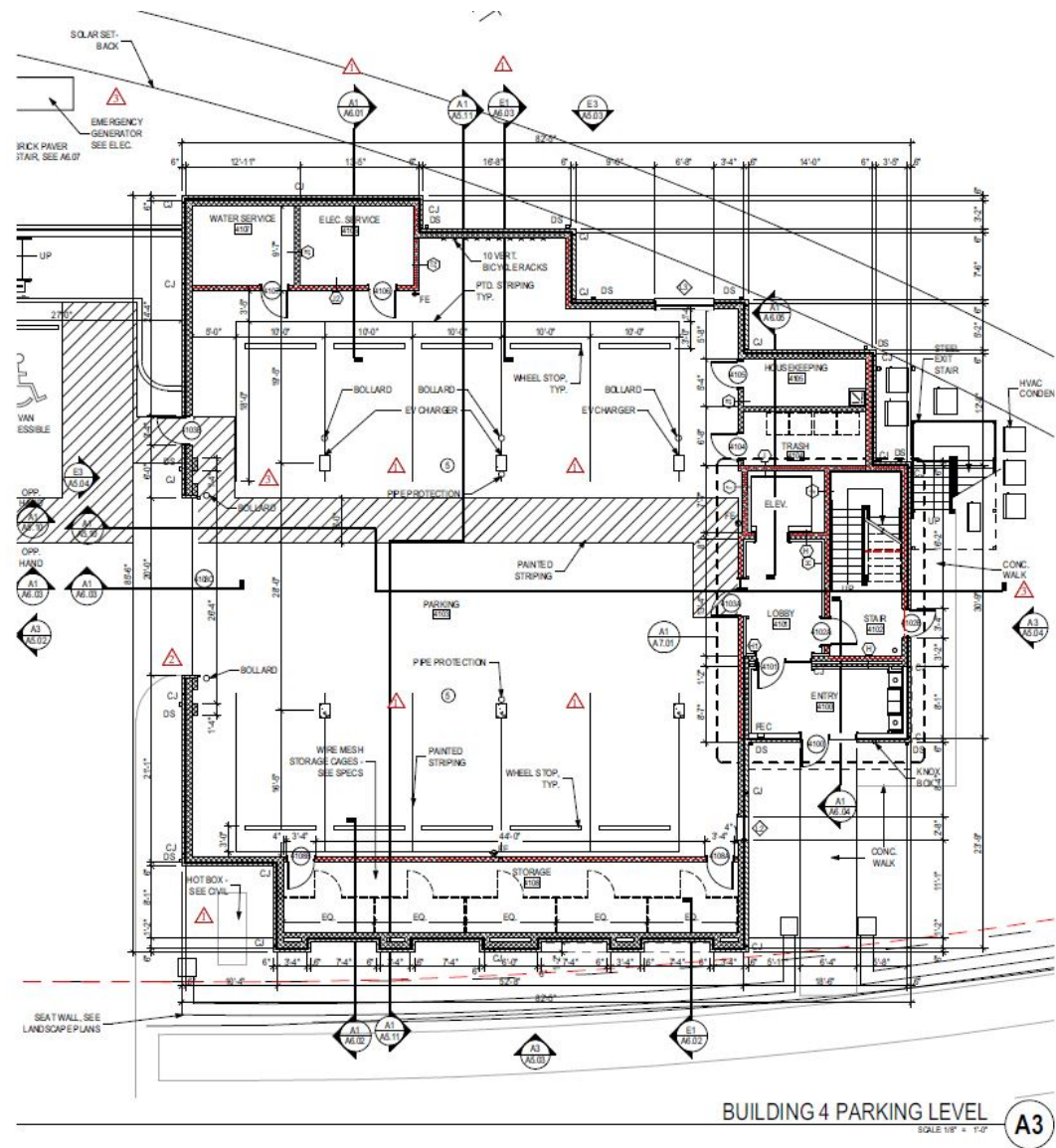
3-D Model Building 4



Building 3 Parking Level Floor Plan

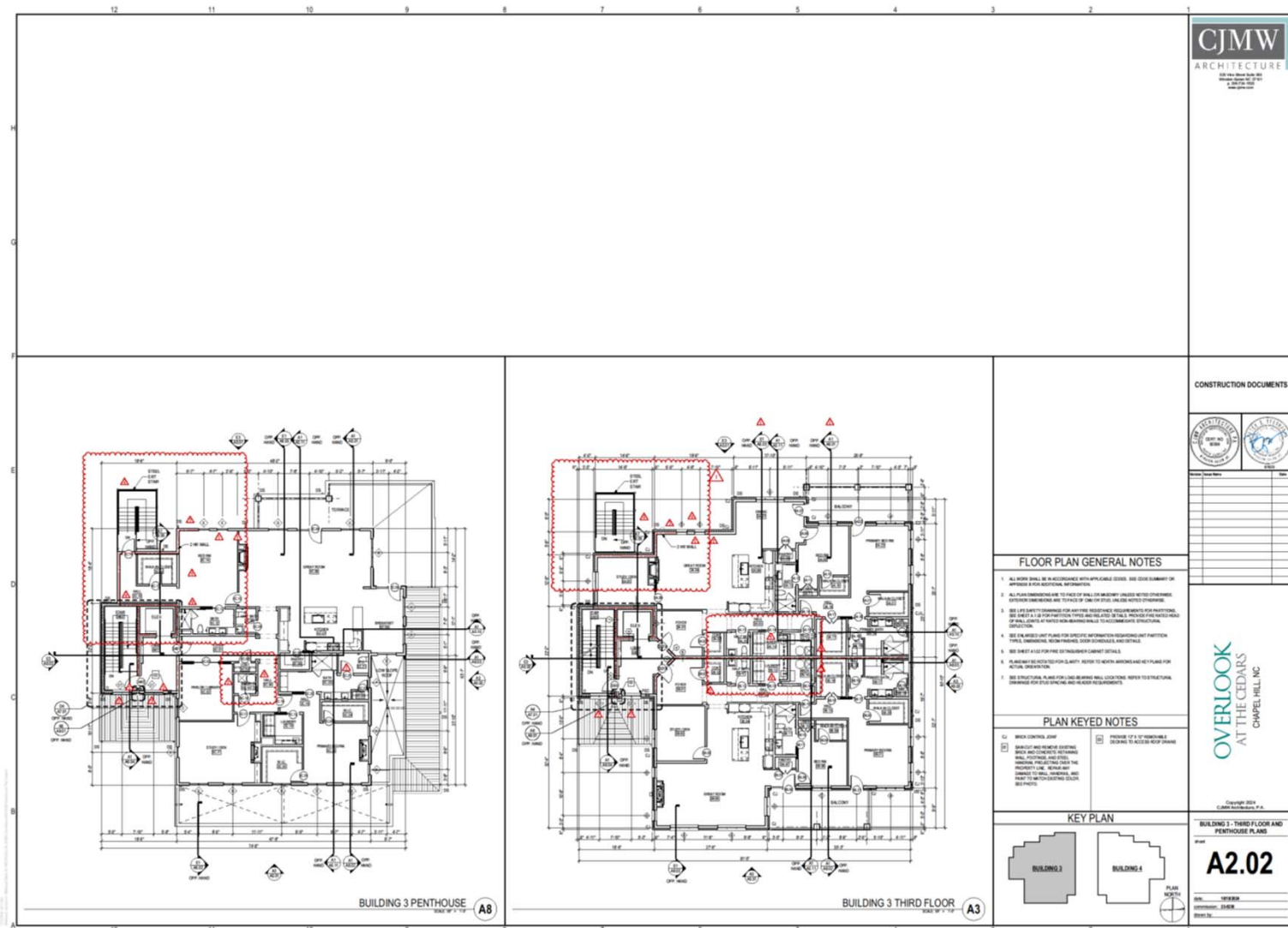


Building 4 Parking Level Floor Plan

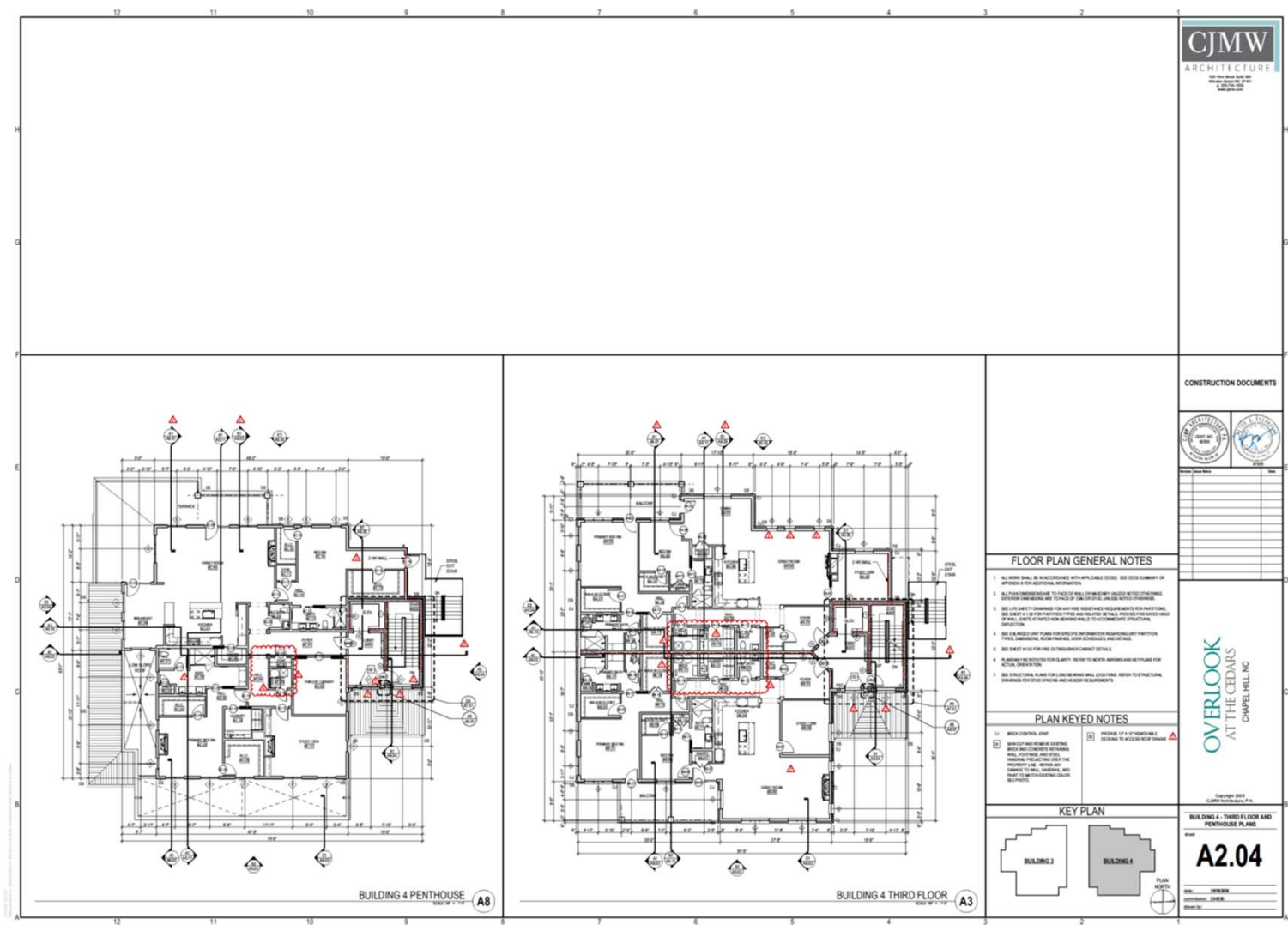


CJMW ARCHITECTURE

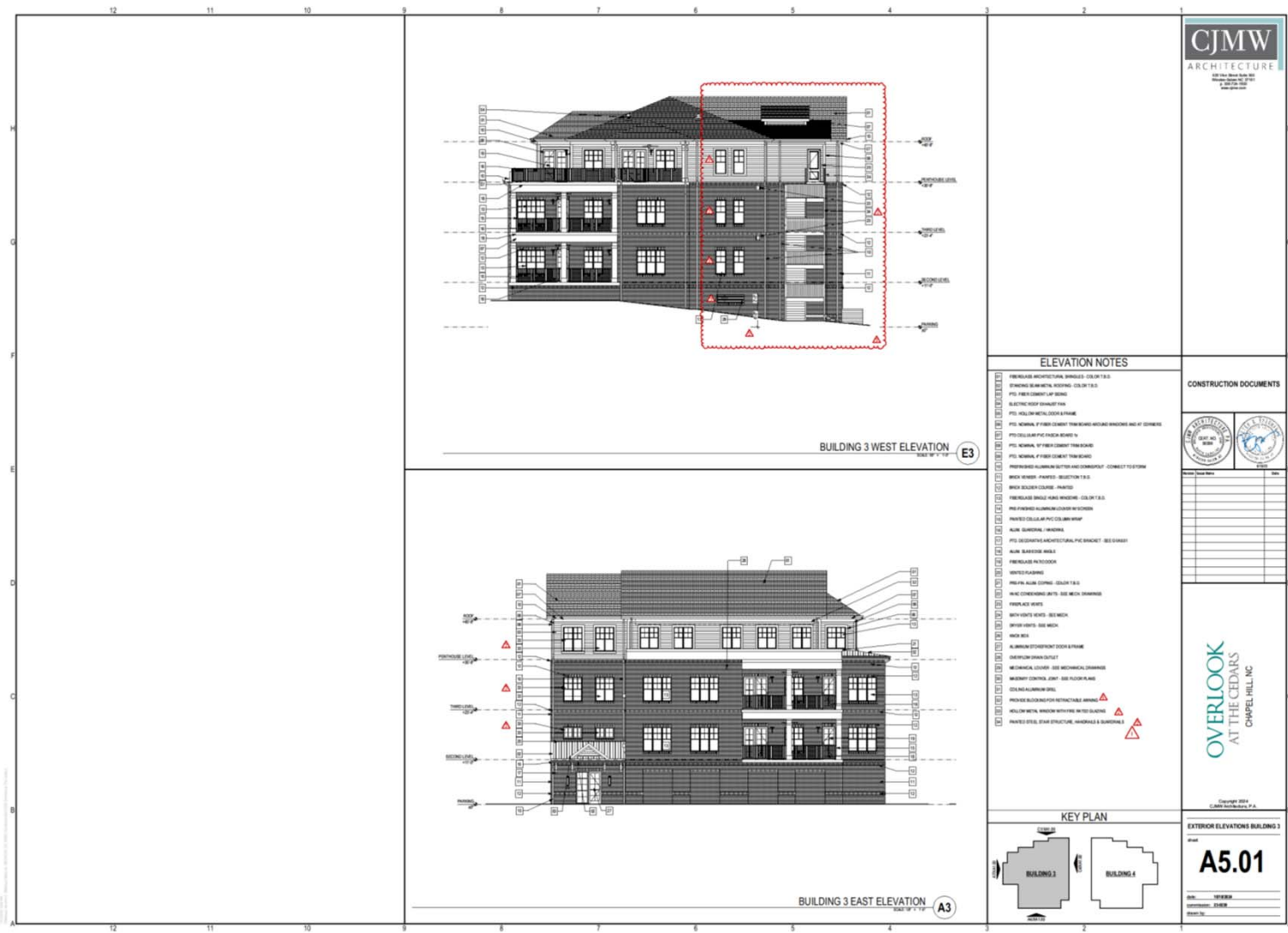
11



Building 4 Third & Fourth Level Floor Plans



Building 3 Exterior Elevations

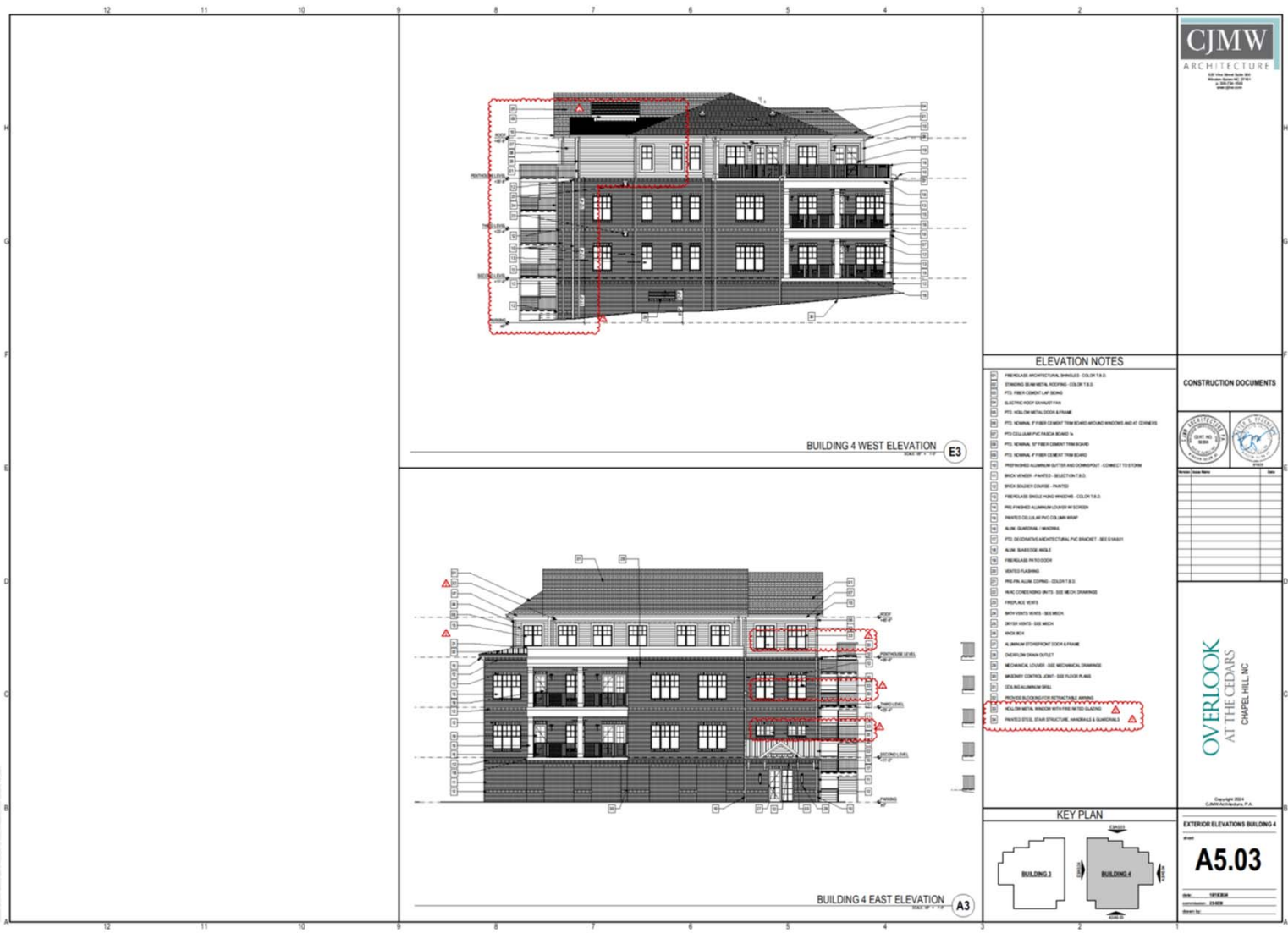


CJMW ARCHITECTURE

14

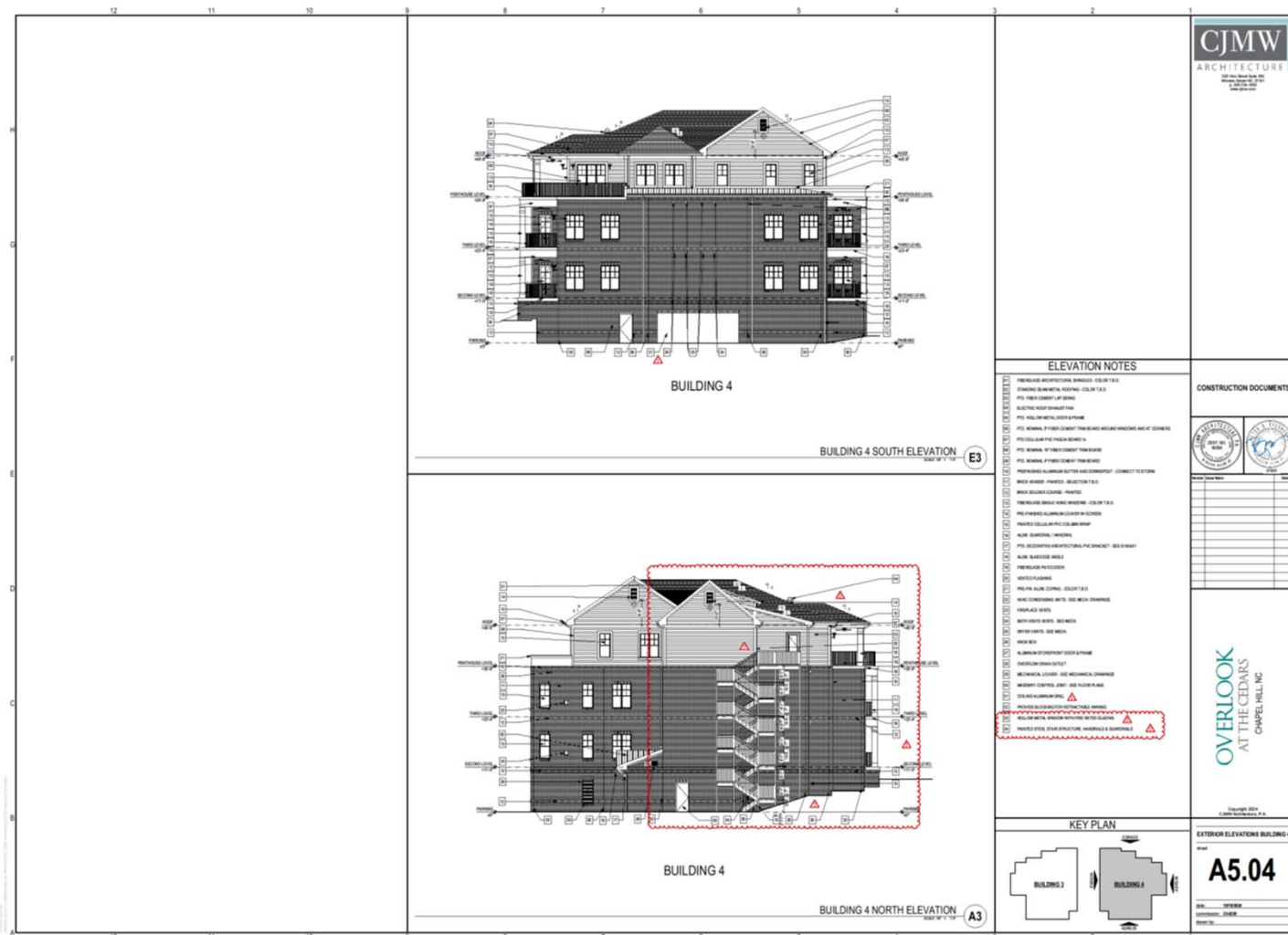


Building 4 Exterior Elevations



CJMW ARCHITECTURE

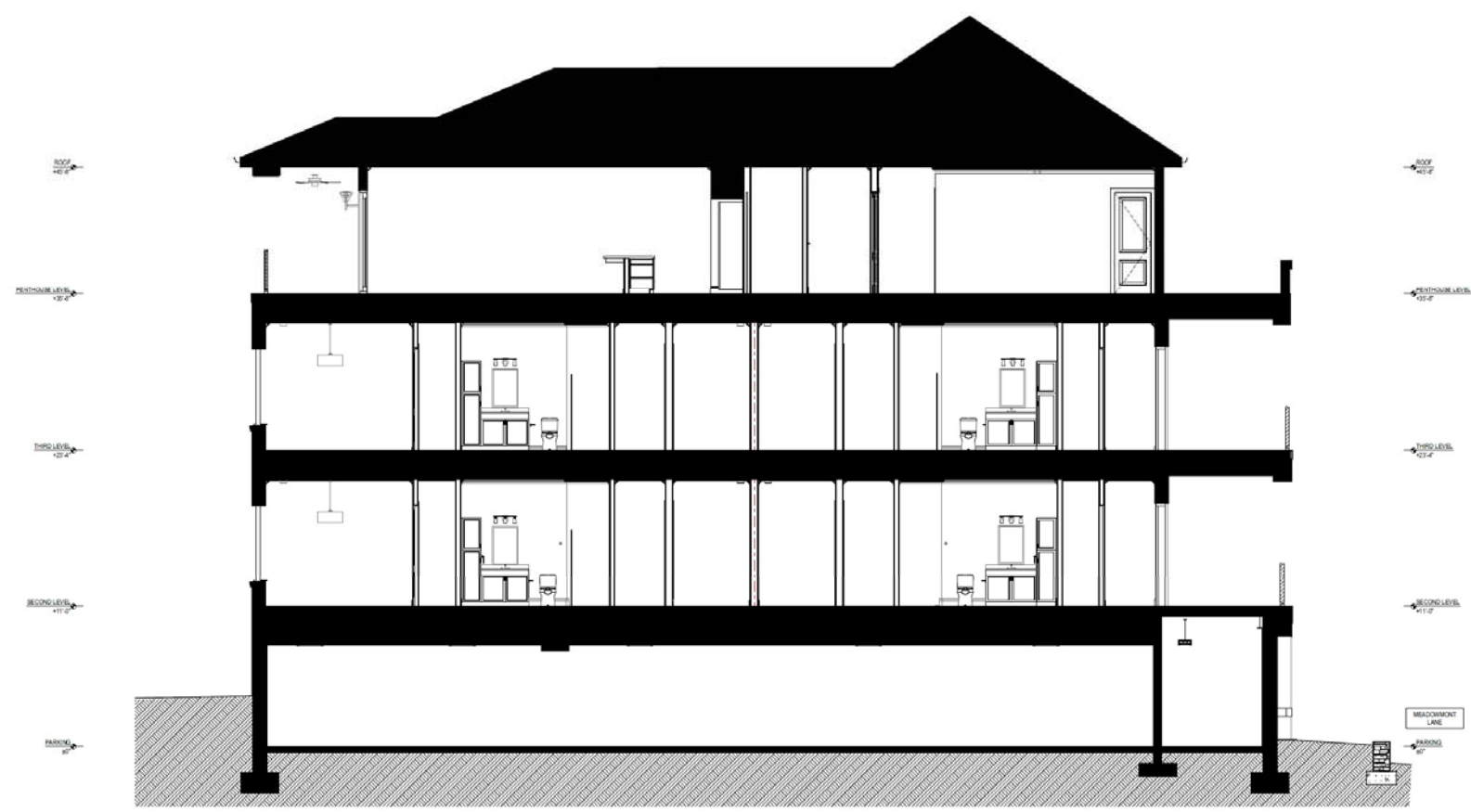
16



CJMw ARCHITECTURE The Cedars of Chapel Hill Overlook Condominium July, 2025



Building Section



BUILDING SECTION
SCALE 1/4" = 1'-0" **A1**

CJMw ARCHITECTURE The Cedars of Chapel Hill Overlook Condominium July, 2025

20

Exterior Lighting

[illegible]

CJMW ARCHITECTURE

The Cedars of Chapel Hill Overlook Condominium July, 2025



CJMw ARCHITECTURE The Cedars of Chapel Hill Overlook Condominium July, 2025

W ARCHITECTURE The Cedars of Chapel Hill Overlook Condominium July, 2025

CJMW ARCHITECTURE

The Cedars of Chapel Hill Overlook Condominium July, 2025



THANK YOU



THE CEDARS
OF CHAPEL HILL

A Life Plan Community