

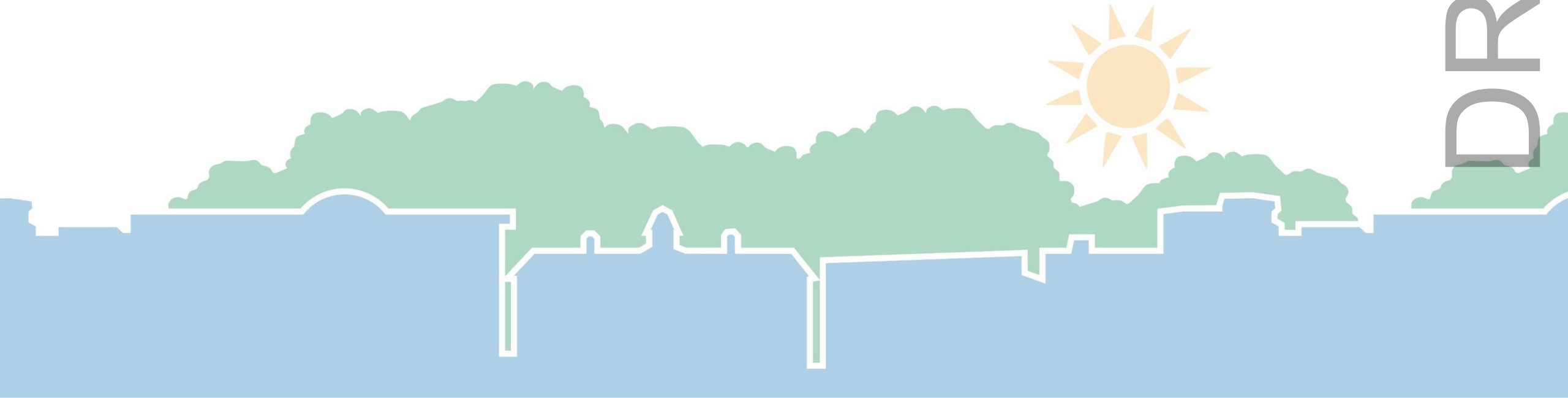
Town Council

Update on Engagement Efforts and Consideration of Revisions to the Draft Focus Area Maps & Principles

October 2, 2019



DRAFT



Recommendation:

That the Council:

- Receive an update on the ongoing engagement efforts on the draft Focus Area Maps and Principles
- Adopt the Resolution authorizing the Town Manager to:
 - Either remove Glenn Heights from South Martin Luther King Jr. Blvd. Focus Area or develop a new Character Type;
 - Investigate and return to Council with options for less prescriptive Character Types; and,
 - Add parcels, adjacent to Meadowmont & Southern Village, to the appropriate Focus Area Maps.

Key Issues:



- Should the Glenn Heights neighborhood be removed from the South Martin Luther King Jr. Focus Area?
- Should parcels adjacent to Meadowmont and Southern Village be added to the appropriate Focus Area Maps to facilitate conversation about the desired futures for these parcels?
- Should staff be directed to investigate redefining the Character Types & return to Council with options for less prescriptive Character Types?

DRAFT





Engagement Opportunities

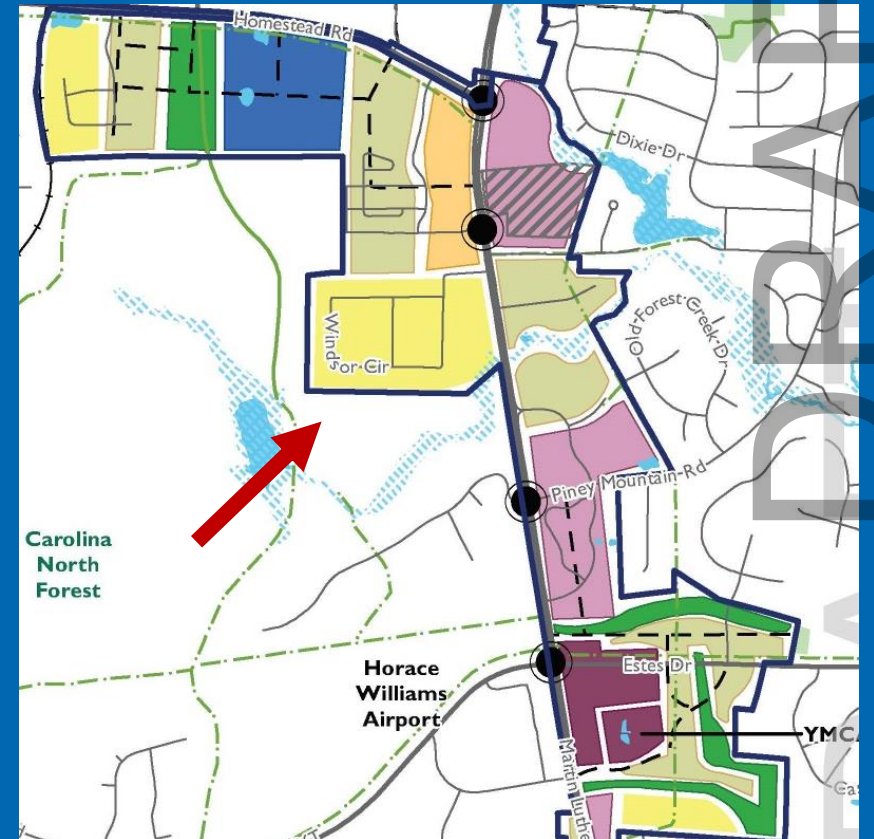
- Attendance at events such as Latin American Festival
- Public Meeting & Focus Groups
- Drop In Studio
- Drop In Meetings for Town Boards & Commission
- FLUM Sub-committee of Planning Commission
- Online Engagement





Initial Feedback – Glenn Heights

Residents of the Glenn Heights neighborhood have petitioned to be removed from the South Martin Luther King, Jr. Blvd. Focus Area





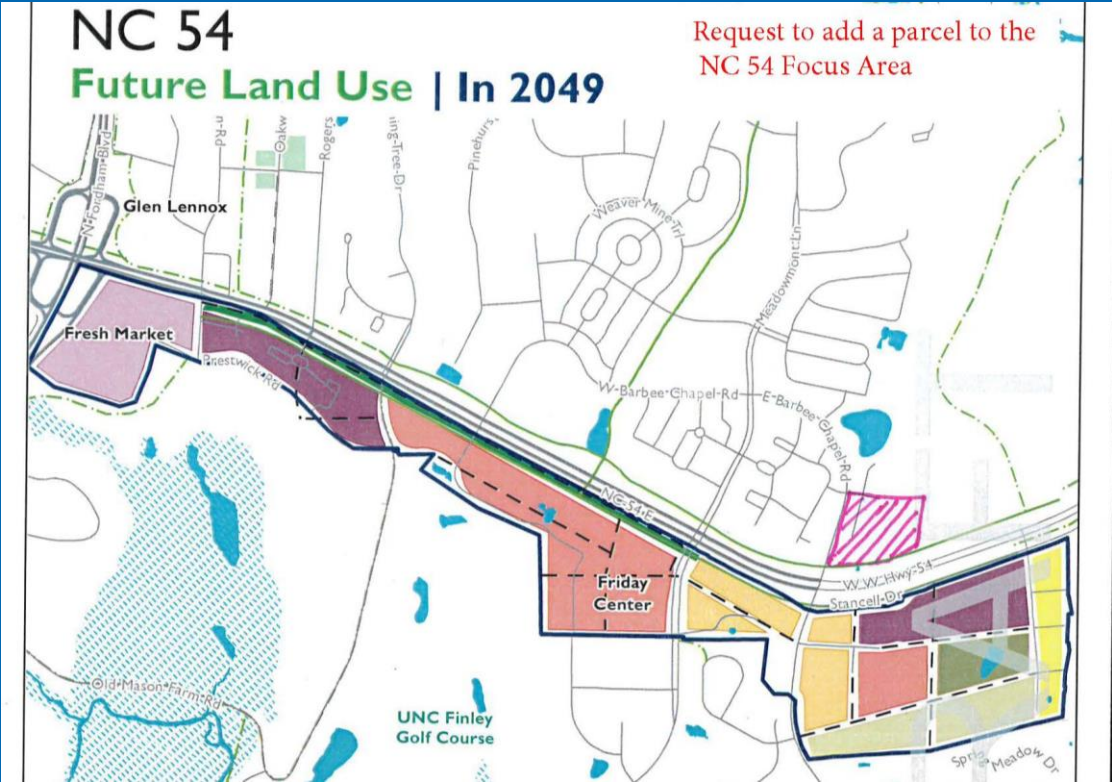
Initial Feedback

- Less Prescriptive Character Types
- Conflicting Versions of the Town's Future Remain



Initial Feedback

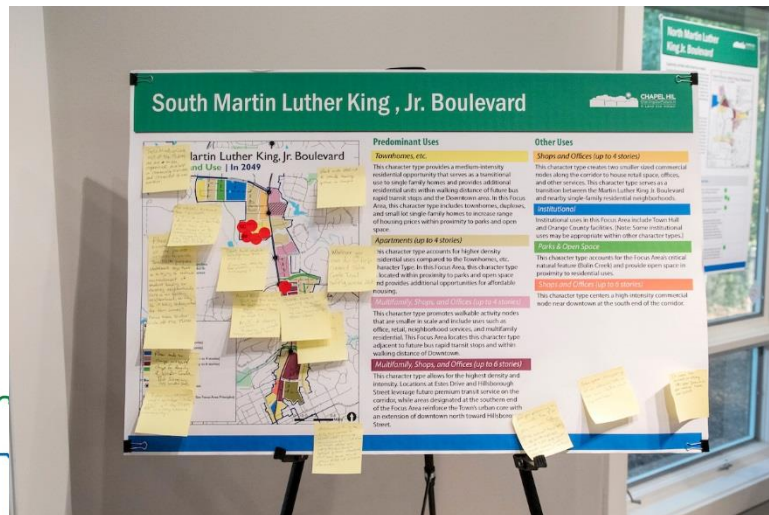
Request to add two properties to the Focus Area Maps



Next Steps

- Additional engagement Opportunities
- Return to Council before the end of the calendar year with complete results of engagement

DRAFT



Recommendation:

That the Council:

- Adopt the Resolution authorizing the Town Manager to:
 - Either remove Glenn Heights from South Martin Luther King Jr. Blvd. Focus Area or develop a new Character Type;
 - Investigate and return to Council with options for less prescriptive Character Types; and,
 - Add parcels, adjacent to Meadowmont & Southern Village, to the appropriate Focus Area Maps.