

Presentation to:
The Town of Chapel Hill
Historic District Commission
May 13, 2021

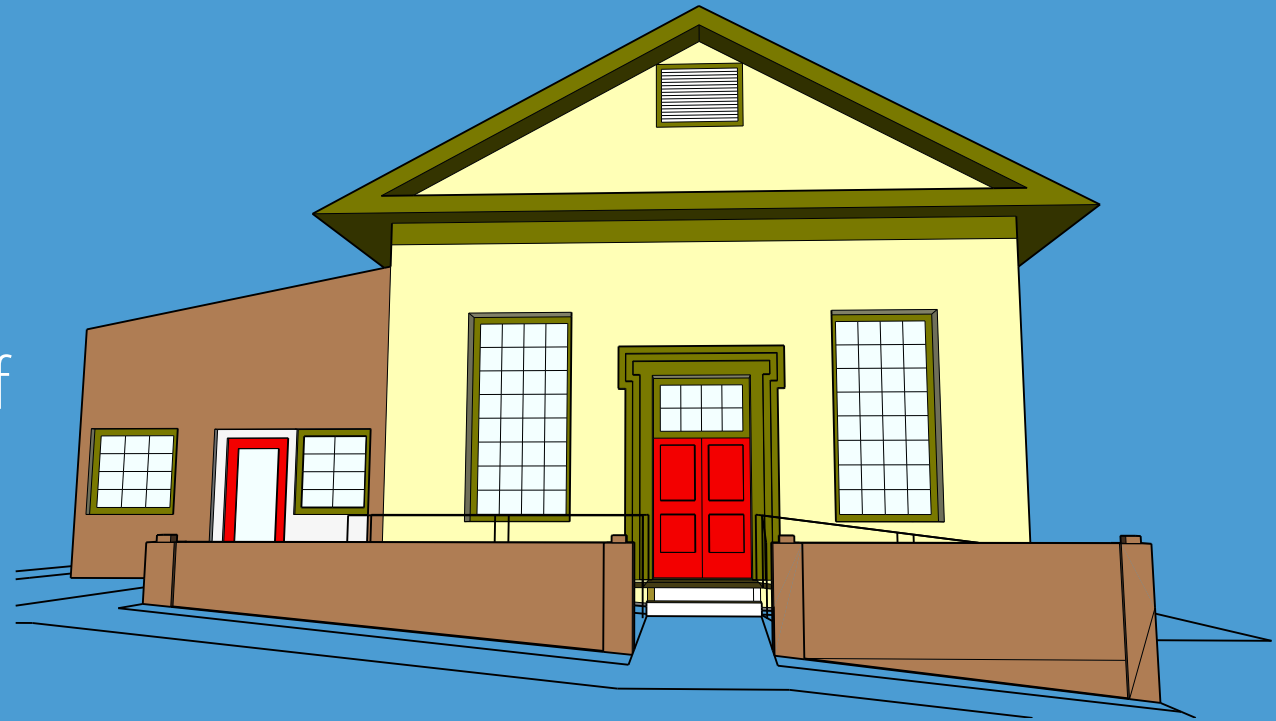
Certificate of Appropriateness
Application #21-026

Rev. Ryan G. Spurrier
Campus Minister & Executive Director



Scope of the Project

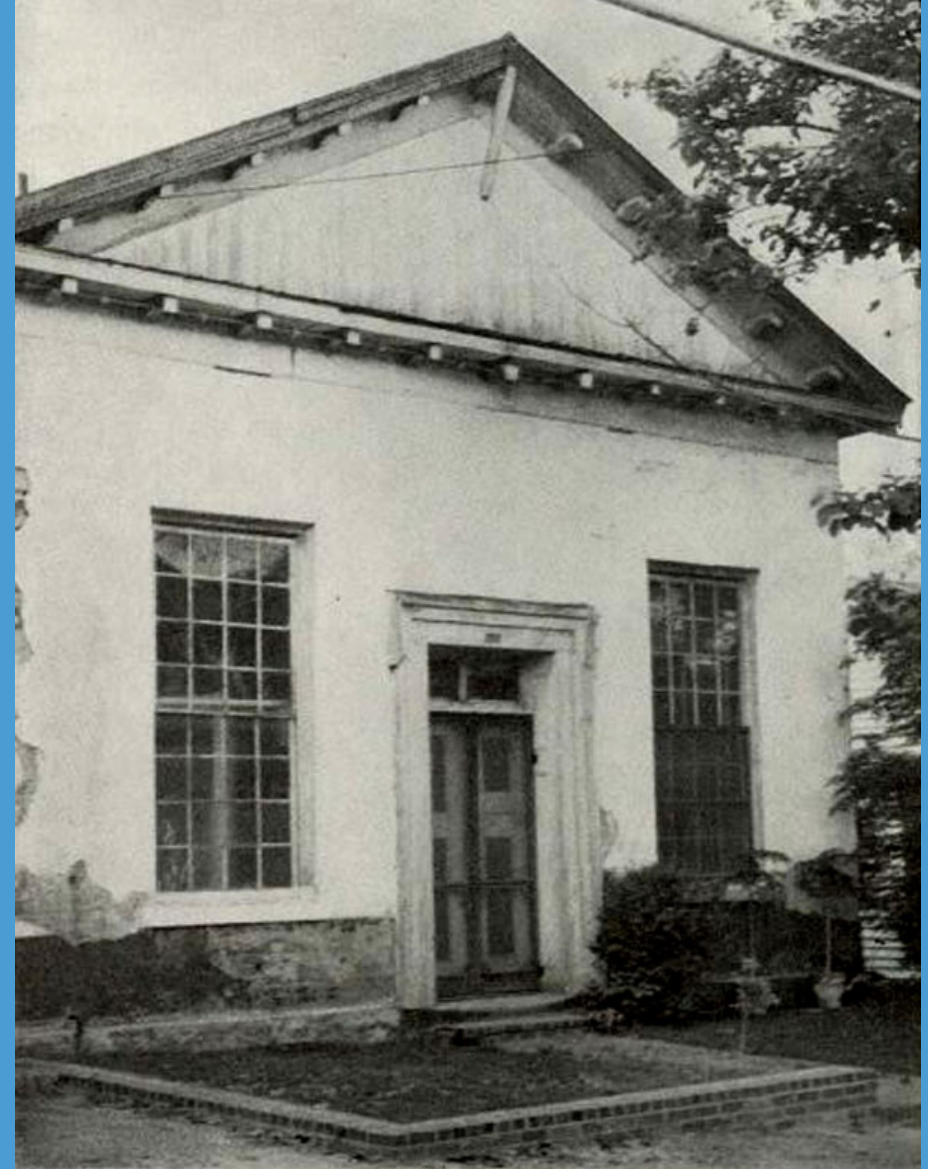
- 1) Adding a handicap accessible ramp to the Rosemary St. Entrance with a push-plate door opener
- 2) Adding a wood cantilevered ground sign immediately in front of the building.
- 3) Adding an identification sign (removable vinyl logo and letters) and mail slot to doors of Rosemary St. Entrance



Location: 201 E. Rosemary Street



Photos from the early to mid
20th Century from
universitymc.church and
openorangenc.org



Location: 201 E. Rosemary Street



May 1959
(Photo from UNC Archives)



1973
(Photo from NC State University Archives)

Location: 201 E. Rosemary Street



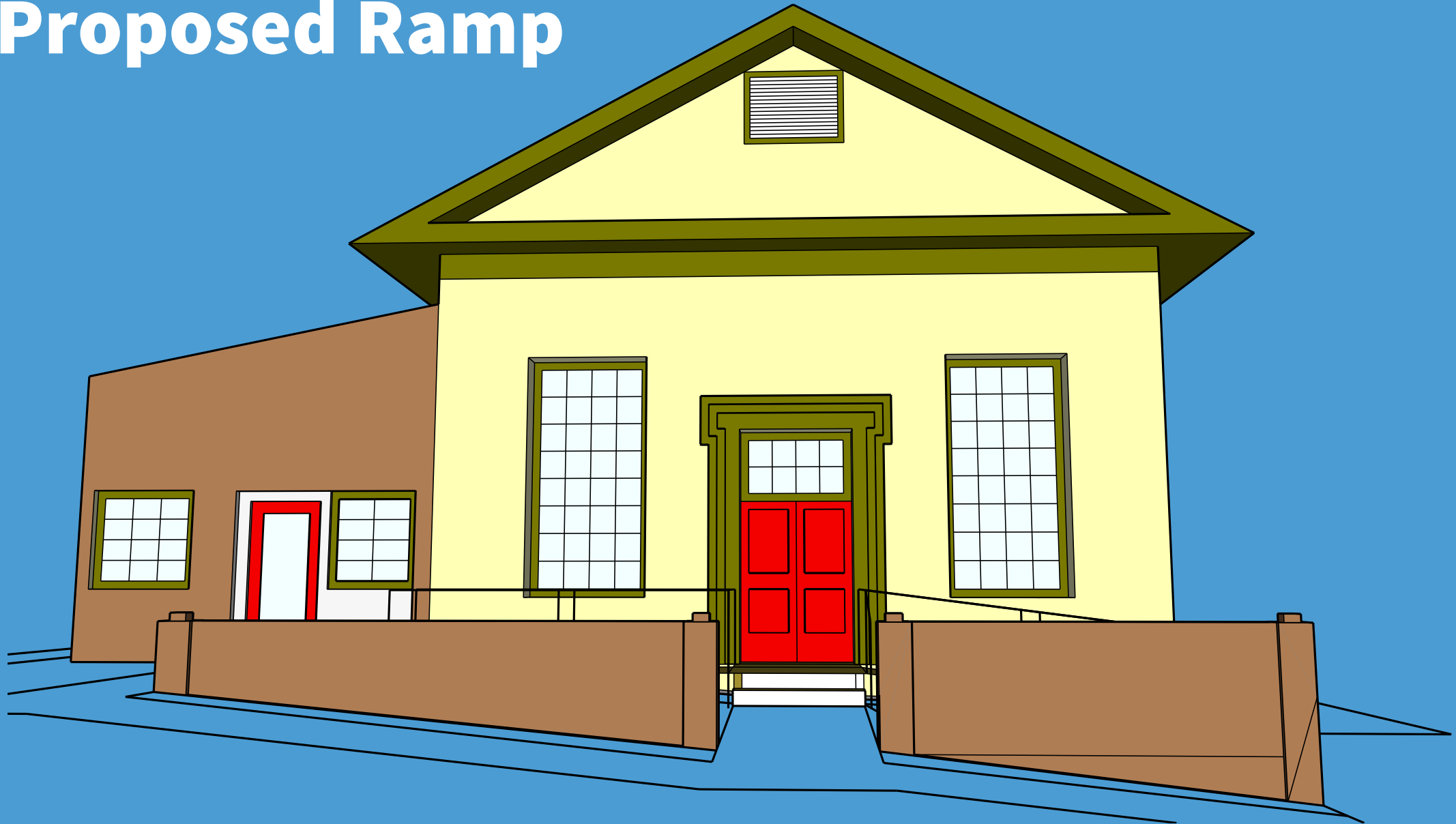
ca. 2006

(Photo from M. Ruth Little's *The Town and Gown Architecture of Chapel Hill*, 2006.)

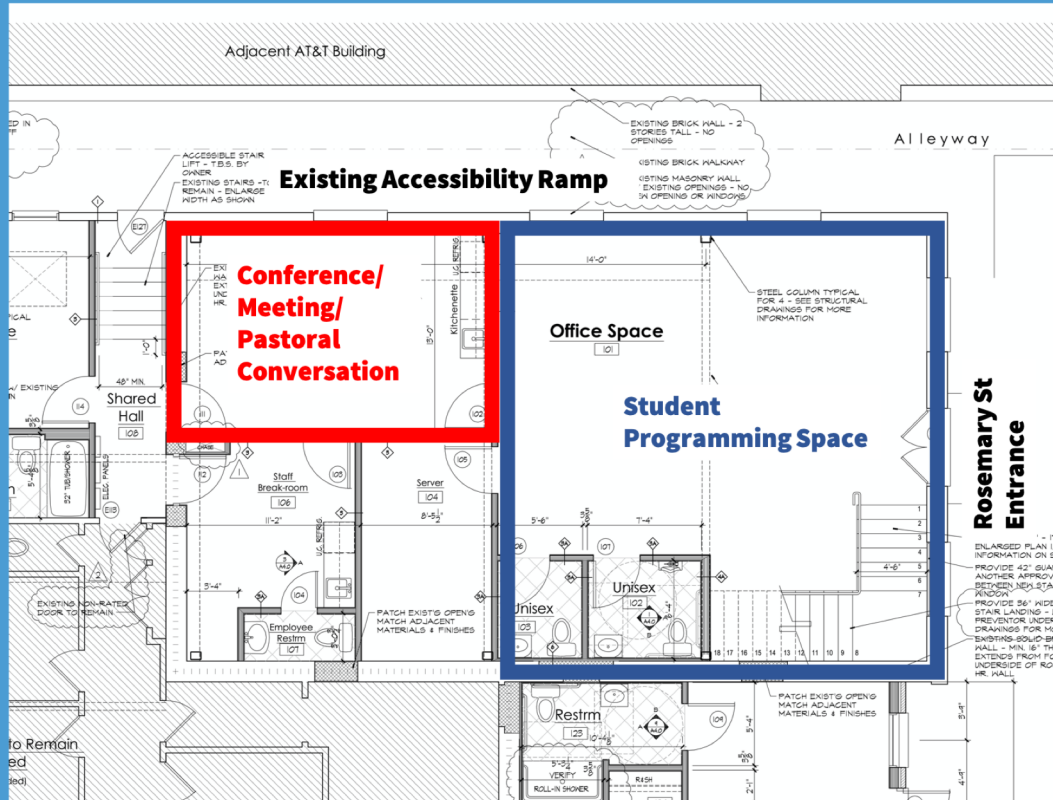


Present Day

Proposed Ramp



Proposed Ramp (Rationale)



The existing accessible entrance:

- Requires a student with a disability to navigate 3 doors, including 2 keypad controlled automatic door openers, to access the student programming space.
- Requires a student with a disability to access the space through an alleyway without a line of sight to the end of the alley.

Southeast Corner of 201 E. Rosemary



Southeast Corner of 201 E. Rosemary

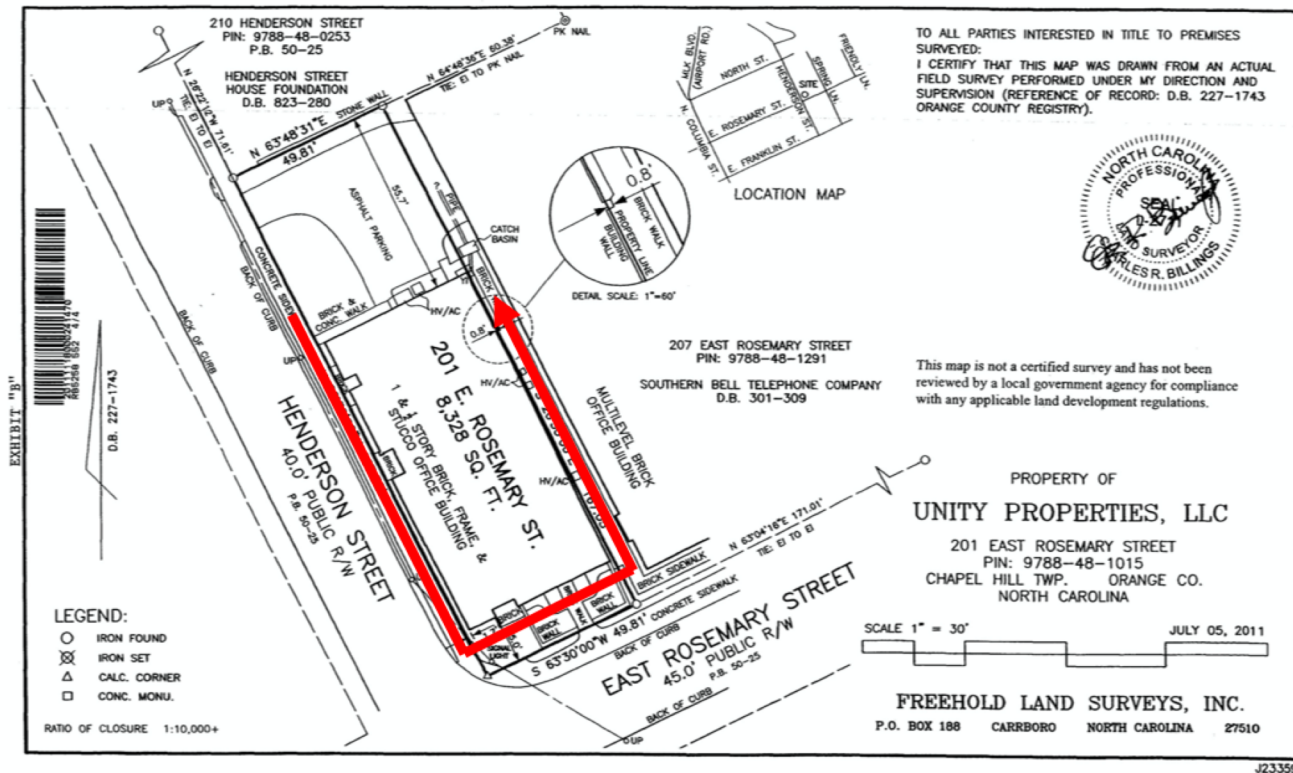


Accessible Route

On April 24, 2021, we met with Tom DiBenedetto, Town of Chapel Hill Building Inspections to clarify Town Code and ADA requirements for Ramps

- In order to not require a handrail, a ramp's rise must be no more than 6" between landings.
- Since our entire proposed ramp is lower than 30" in height, guardrails and pickets/balusters are not required.
- Architectural drawings/elevations are not required for building permits for ramps; sketches suffice.

Accessible Route



To remain the accessible route, this path must retain a slope under 1:20, else sections that are more than 6' in length or have a rise of more than 6" must have a handrail of their own.

Accessible Route

Thus, to avoid a handrail, a new ramp must have:

1. A rise of no more than 6"
2. A horizontal projection of no more than 72" (or 6')
3. Not create a new slope more than 1:20 along the succeeding section of the accessible route, which would then require a handrail of its own.

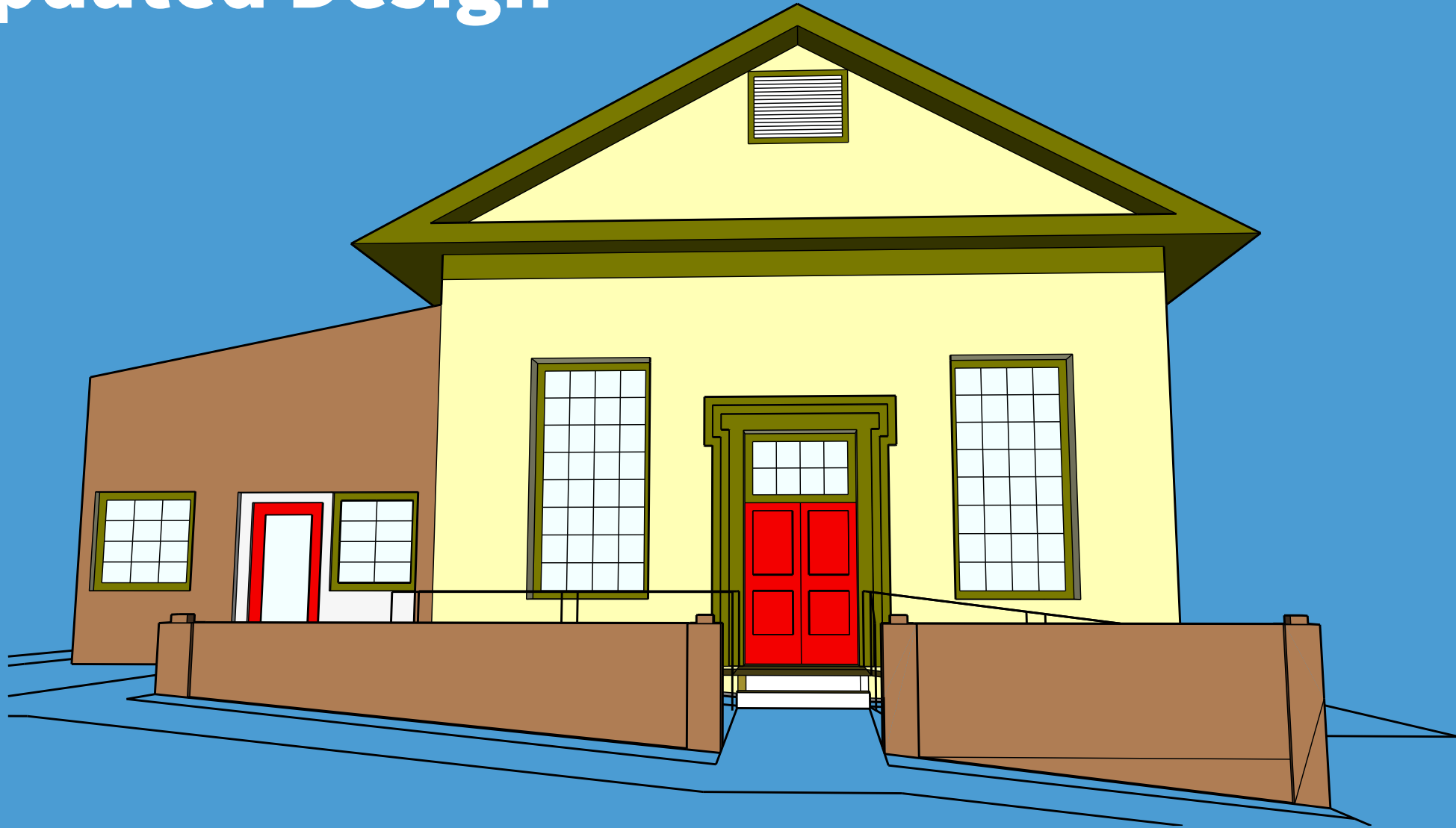
Accessible Route

Thus, to avoid a handrail, a new ramp must have:

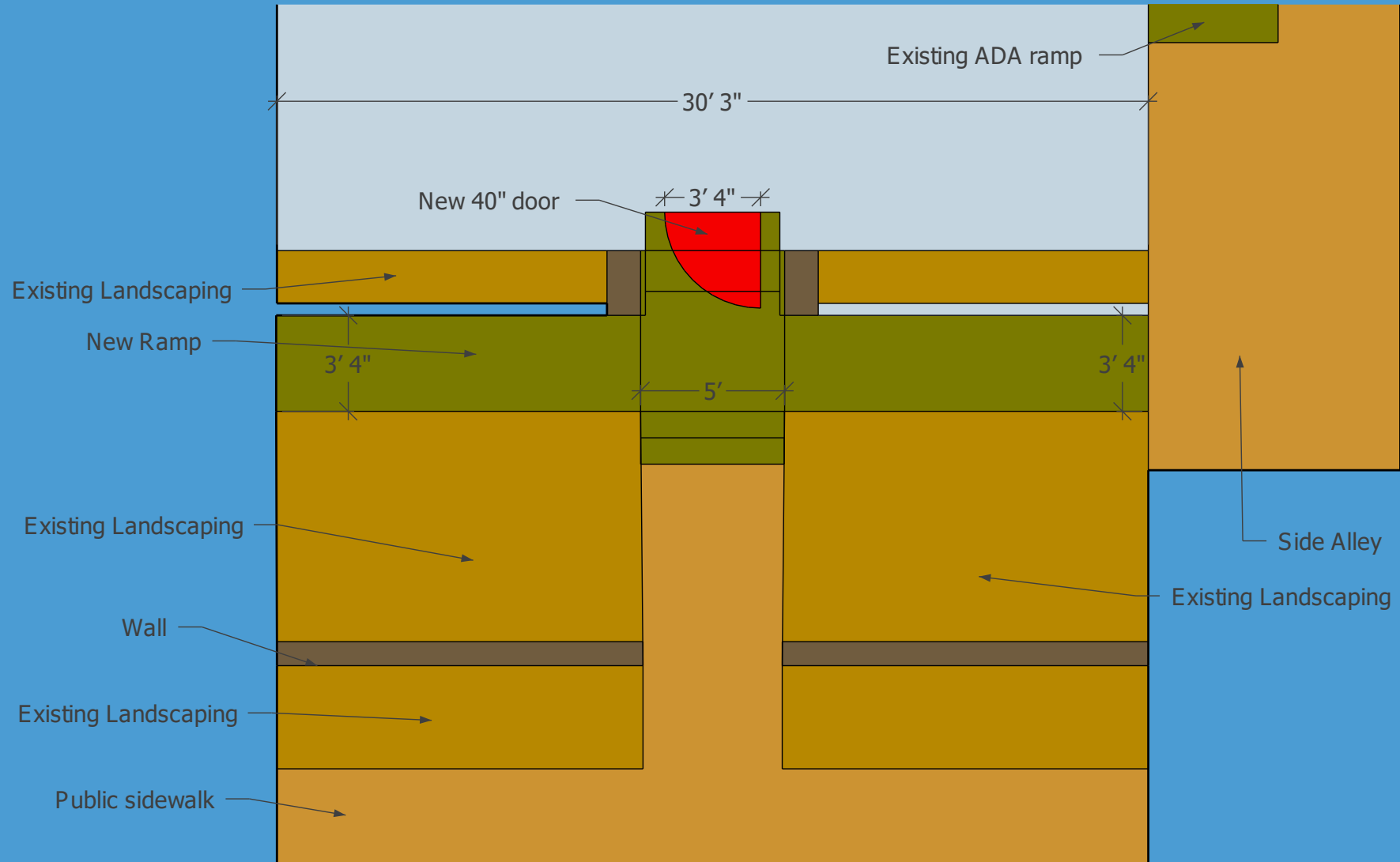
1. A rise of no more than 6"
2. A horizontal projection of no more than 72" (or 6')
3. Not create a new slope more than 1:20 along the succeeding section of the accessible route, which would then require a handrail of its own.



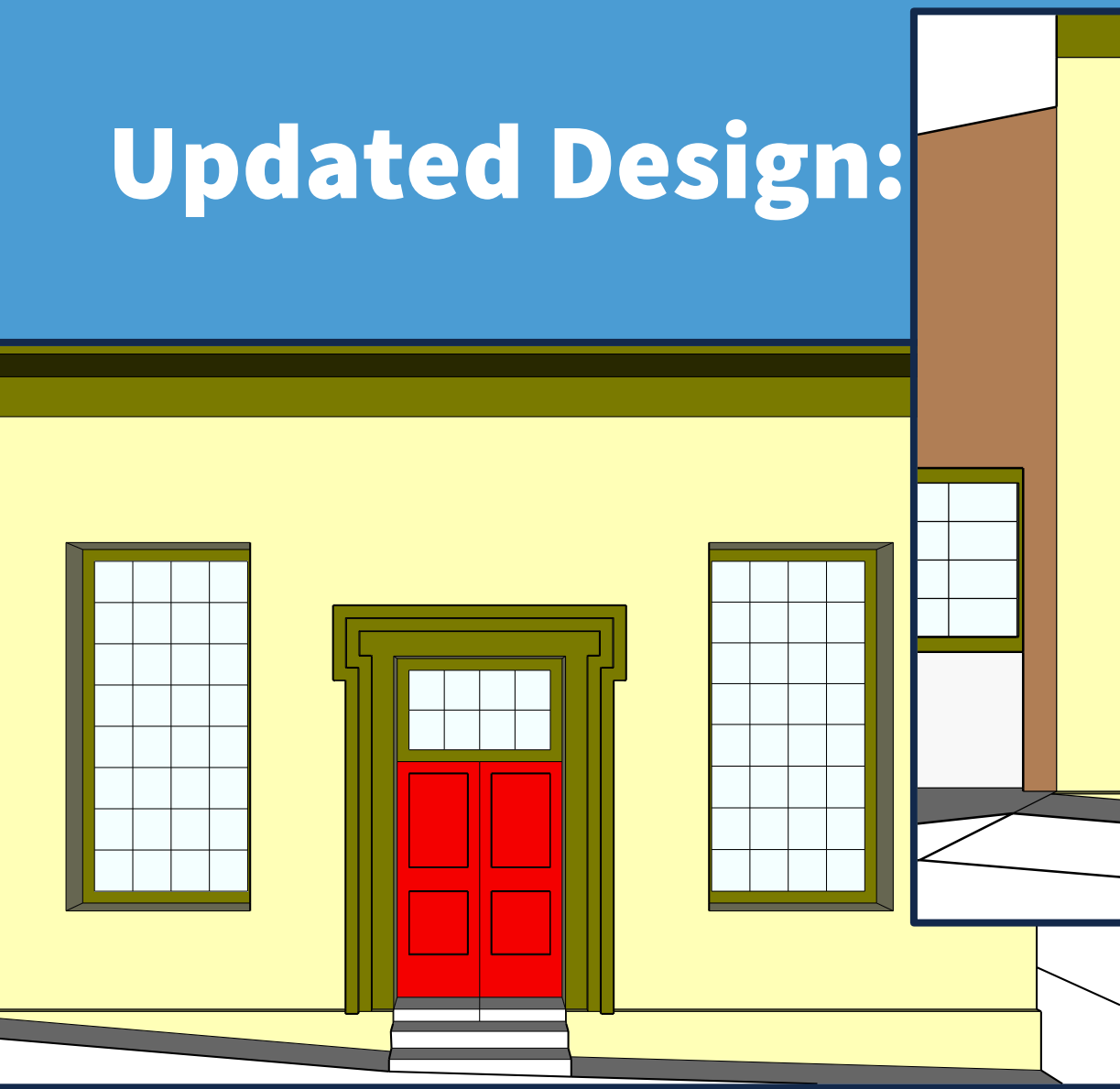
Updated Design



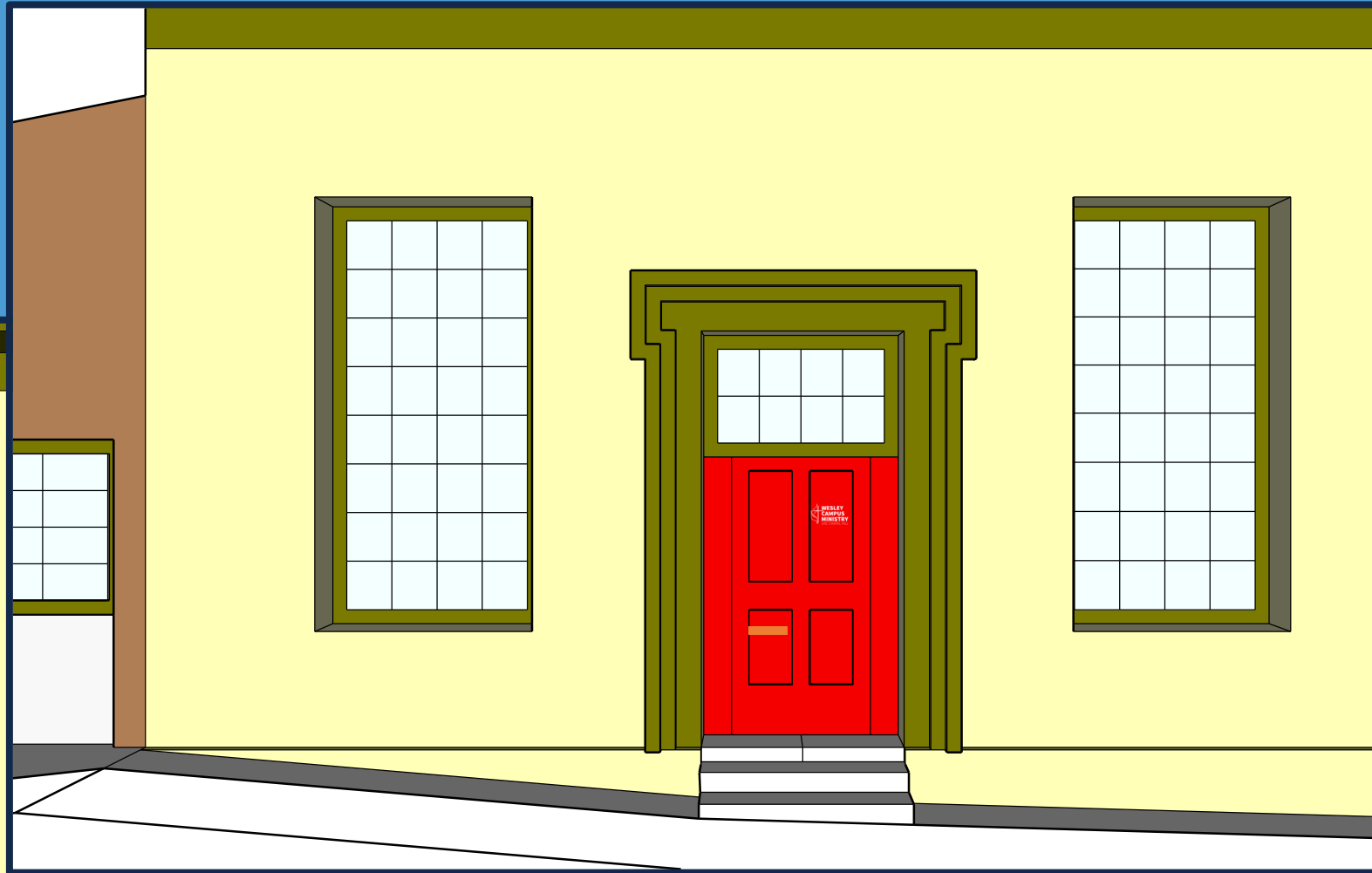
Updated Design:



Updated Design:



Existing



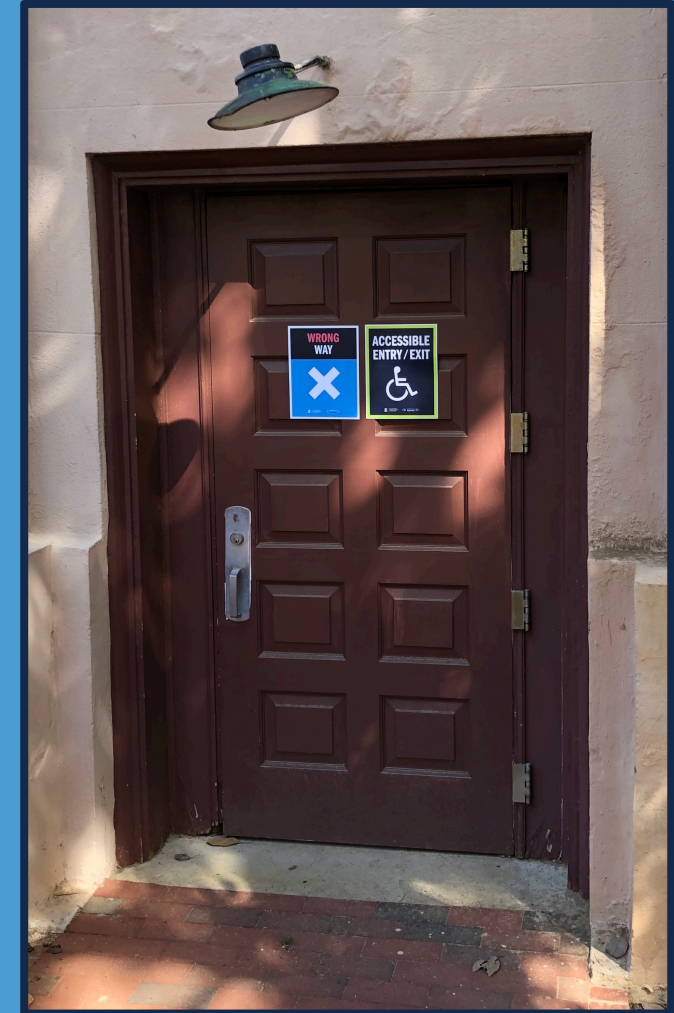
Proposed

- 40" Out-Swing Wooden Door
- Centered Between (2) 6" Panels
- Trimmed to Match Existing

Proposed Door (Historic Playmakers)



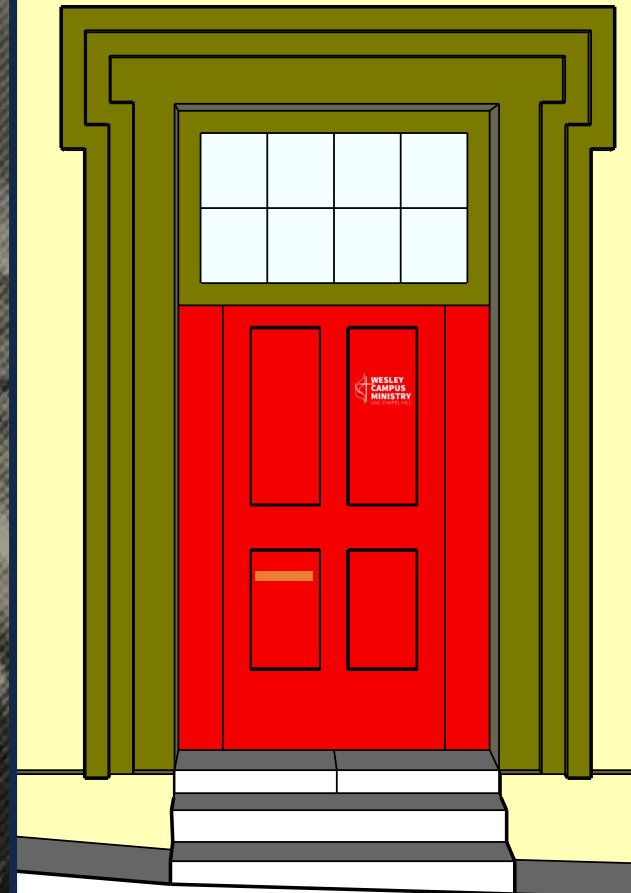
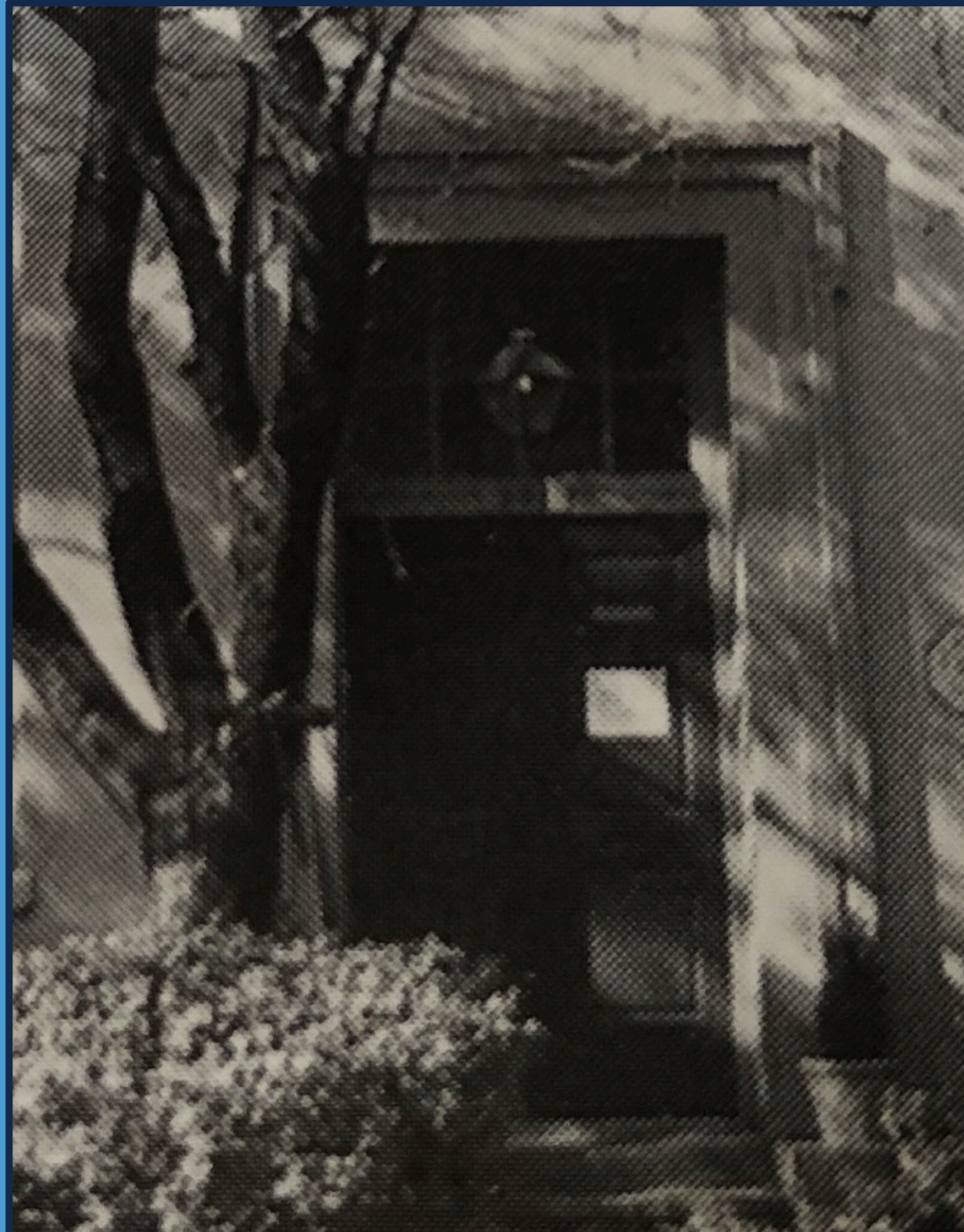
Non-Accessible
Entrance



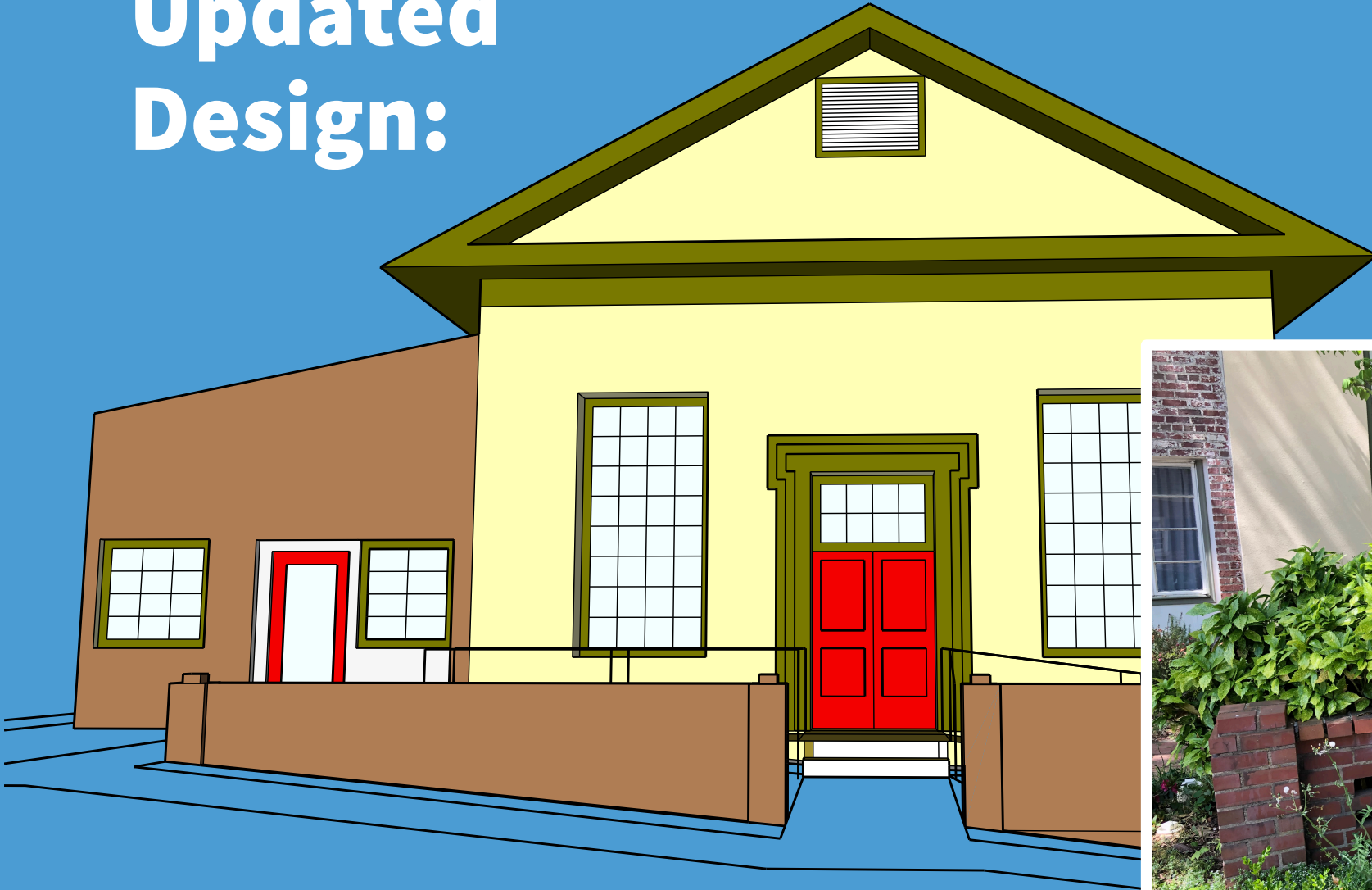
Accessible
Entrance

There has been no change in our proposed identification sign (removable vinyl letters) and mail slot.

The ca. 2006 picture from Ruth Little's Town and Gown Architecture shows that an identification sign was previously located in our proposed position.



Updated Design:



Design Principles and Standards

3.8.3. Meet accessibility and life safety code requirements in ways that do not compromise the historic character or significant architectural features of the building.

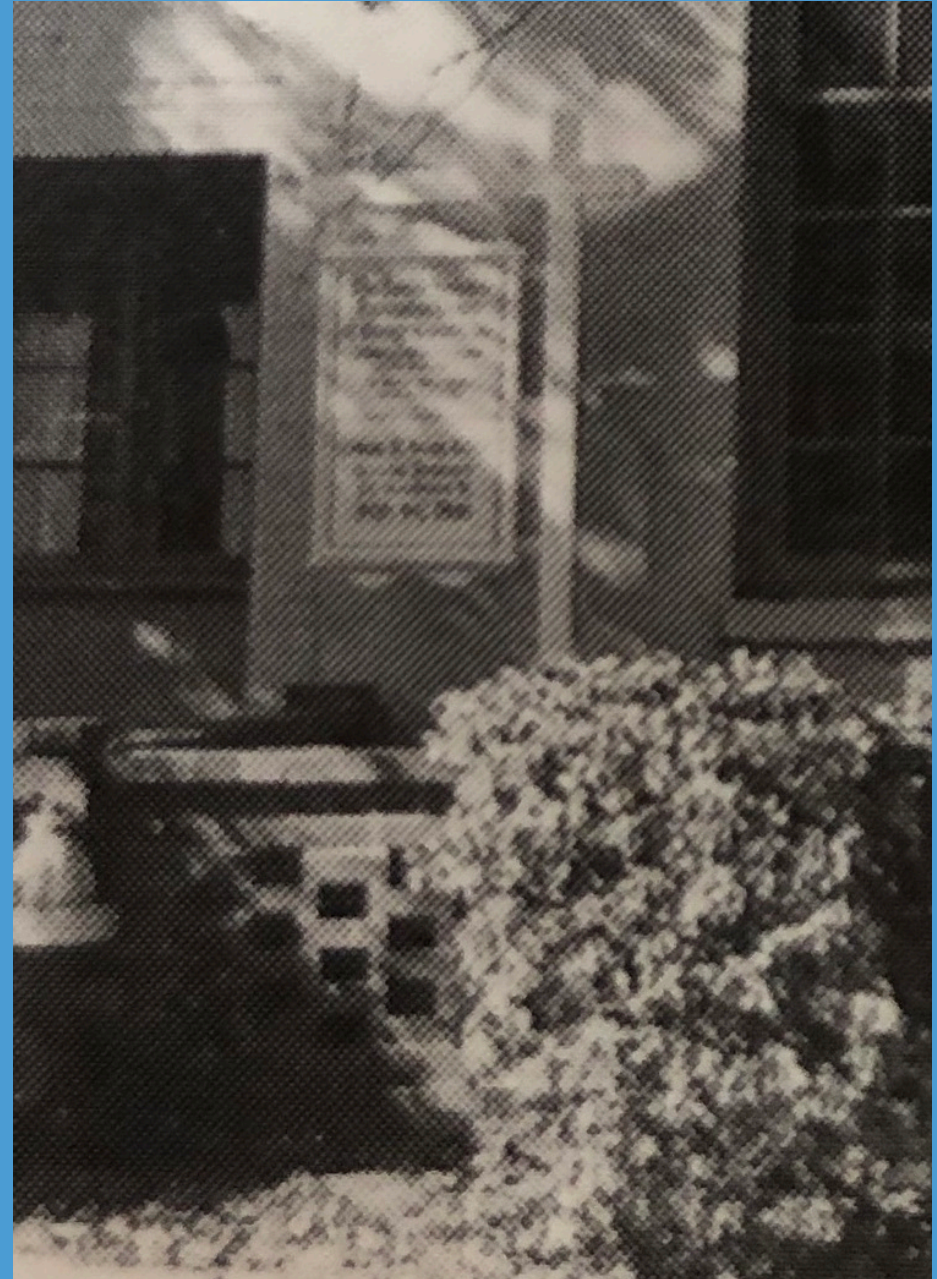
3.8.4. Introduce new or alternate means of access and new life safety features, as needed, in ways that are reversible and do not compromise the historic materials, features, or character of the building.

3.8.5. Locate new or alternative means of access-such as ramps, handrails, and mechanical lifts-on side or rear elevations where they are minimally visible from the street. Design accessibility features so they are compatible with the historic building in design, scale, materials, and finish. Consider using vegetation to screen the features and minimize their visual impact.

Proposed Sign

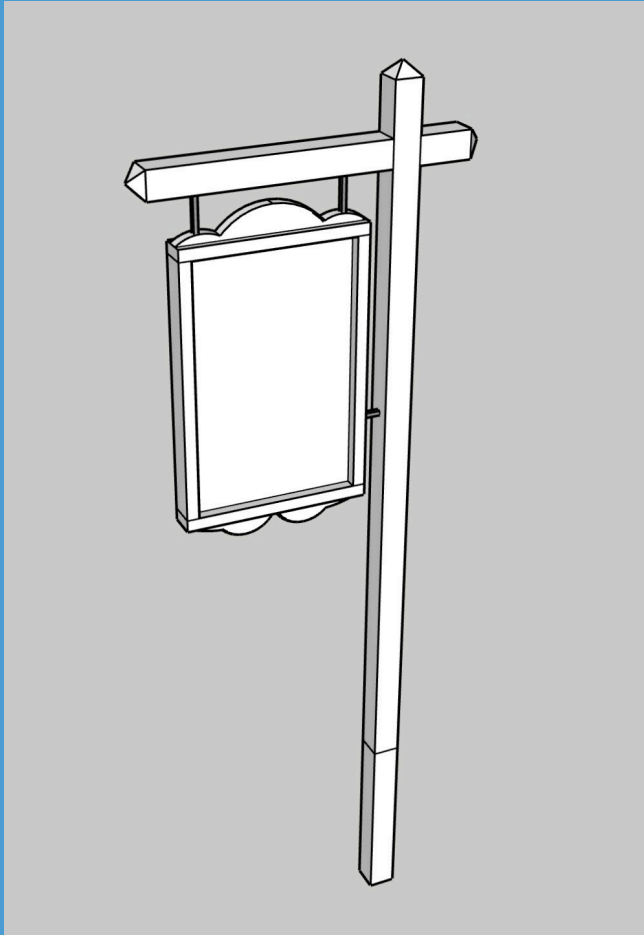


1973



ca. 2006

Proposed Sign



Sign Design



(919)942-2152
uncwesley.org

201

E. Rosemary St.

Sign Content

The sign and support will be constructed of wood and painted white.

The sign board will be attached with metal chain, eye-hooks, and s-hooks.

The top of the sign support will be approximately 8' above grade.

The sign board will be 2' x 3', exclusive of top and bottom decorative trim.

The cross bar will be approximately 44" wide.

Dimensions of sign board and support are based off scale-calculations made from the 2006 photograph and conform to Chapel Hill Sign Code.

Design Principles and Standards

1.7.4. If a historic sign is missing or too deteriorated to repair, replace the sign with one that matches the original in material, design, dimension, pattern, detail, and texture. Or, replace it with a new sign that is compatible in design, scale, material, and finish with the overall historic character of the building, site and district.

1.7.5. Introduce new signage with care so that the overall historic character of the building, site, and district is not compromised or diminished. Select and site new signs so their location, orientation, height, scale, design, and finish are compatible with the historic district and its human scale.

UNC Wesley Campus Ministry

- Founded in 1945 out of University UMC
- Ministry of the North Carolina Conference of the United Methodist Church
- Registered Student Organization of UNC Chapel Hill
- Purpose is to form and shape Christian leaders



Rationale for the Project

Membership and participation in the organization must be open to all students without regard to age, race, color, national origin, disability, religious status or historic religious affiliation, veteran status, sexual orientation, gender identity, or gender expression. Membership and participation in the organization must also be open without regard to gender, unless exempt under Title IX.

--UNC Guidelines for Student Organizations

The United Methodist Church is an inclusive society without regard to ethnic origin, economic condition, gender, age, or the disabilities of its constituents.

--Book of Discipline
of the United Methodist Church

Proposed Sign (Comparison)



Proposed Door



Existing Doorway



Existing Doors

Existing doors are
26" wide by 80" tall

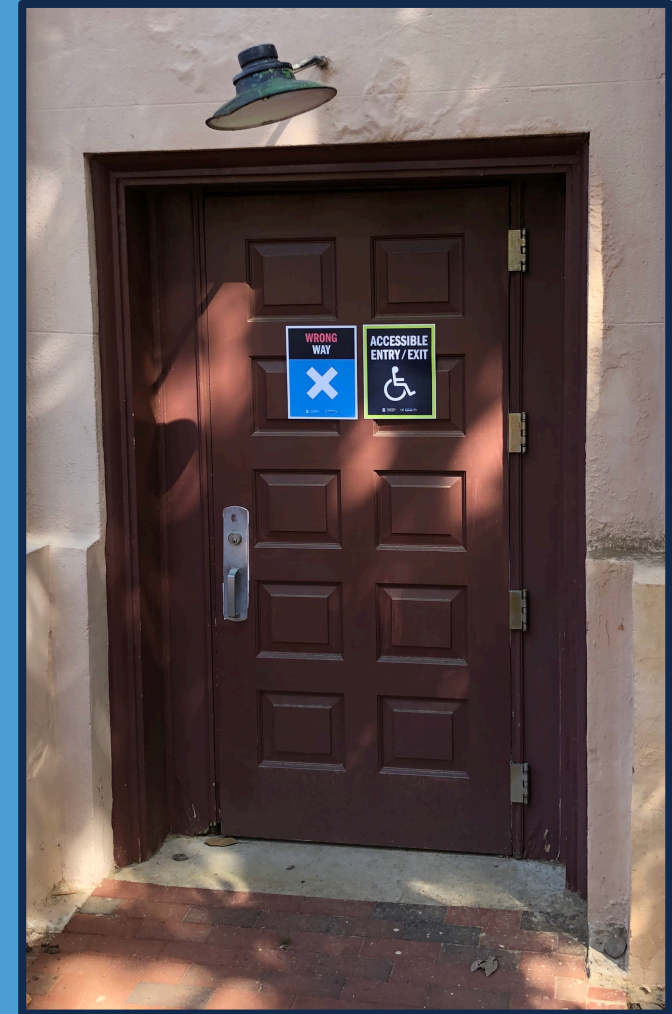
Electronic door openers
require a minimum width
of 28"

Consulted with Grant
Quertermous, Curator
and Director of
Collections, and Dr.
Jeffrey E. Klee, VP &
Senior Director of
Architecture at Classical
American Homes
Preservation Trust

Proposed Door (Historic Playmakers)



Non-Accessible
Entrance



Accessible
Entrance

Proposed Door (Comparison)



New West



Person Hall

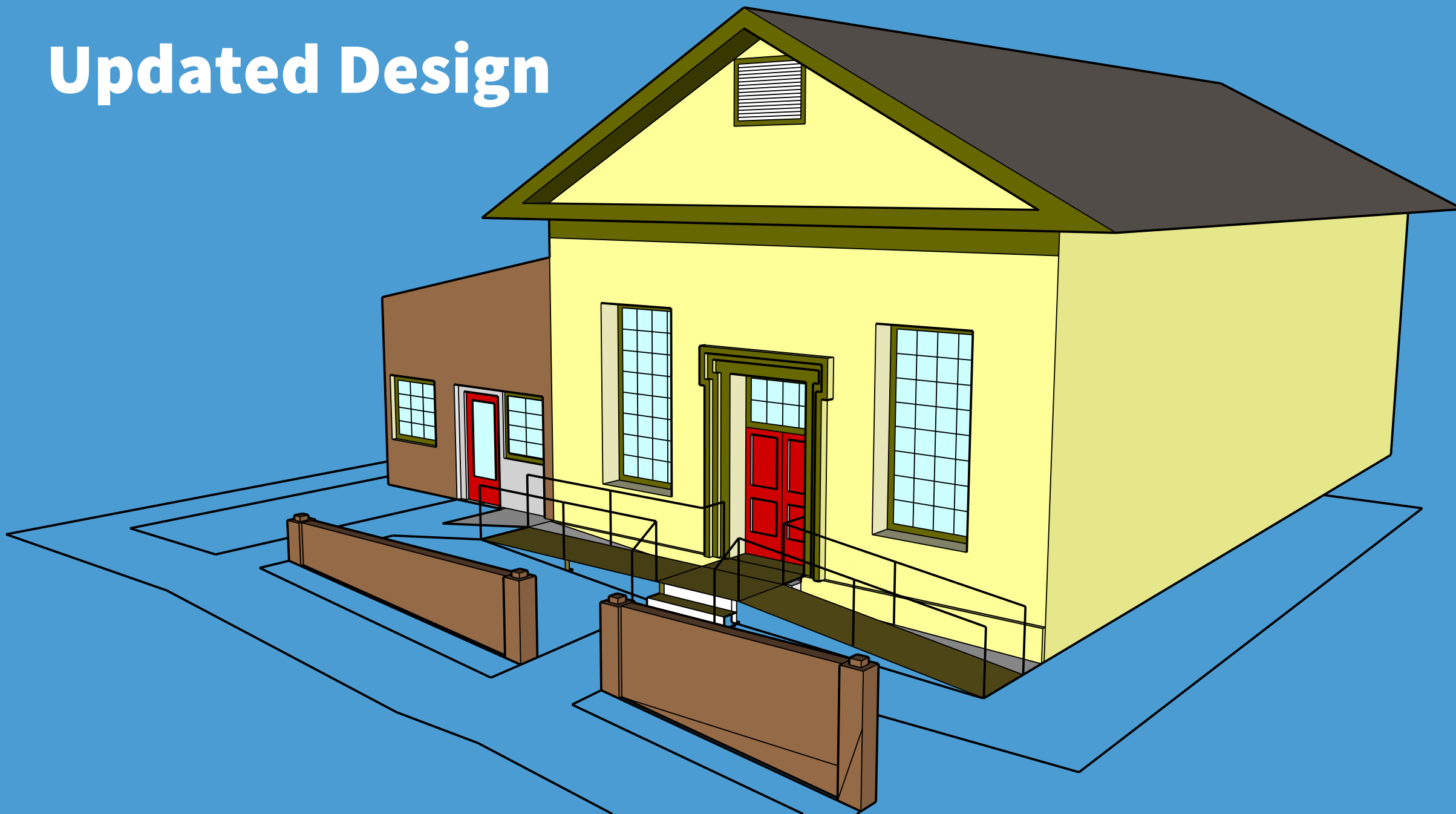


Old East

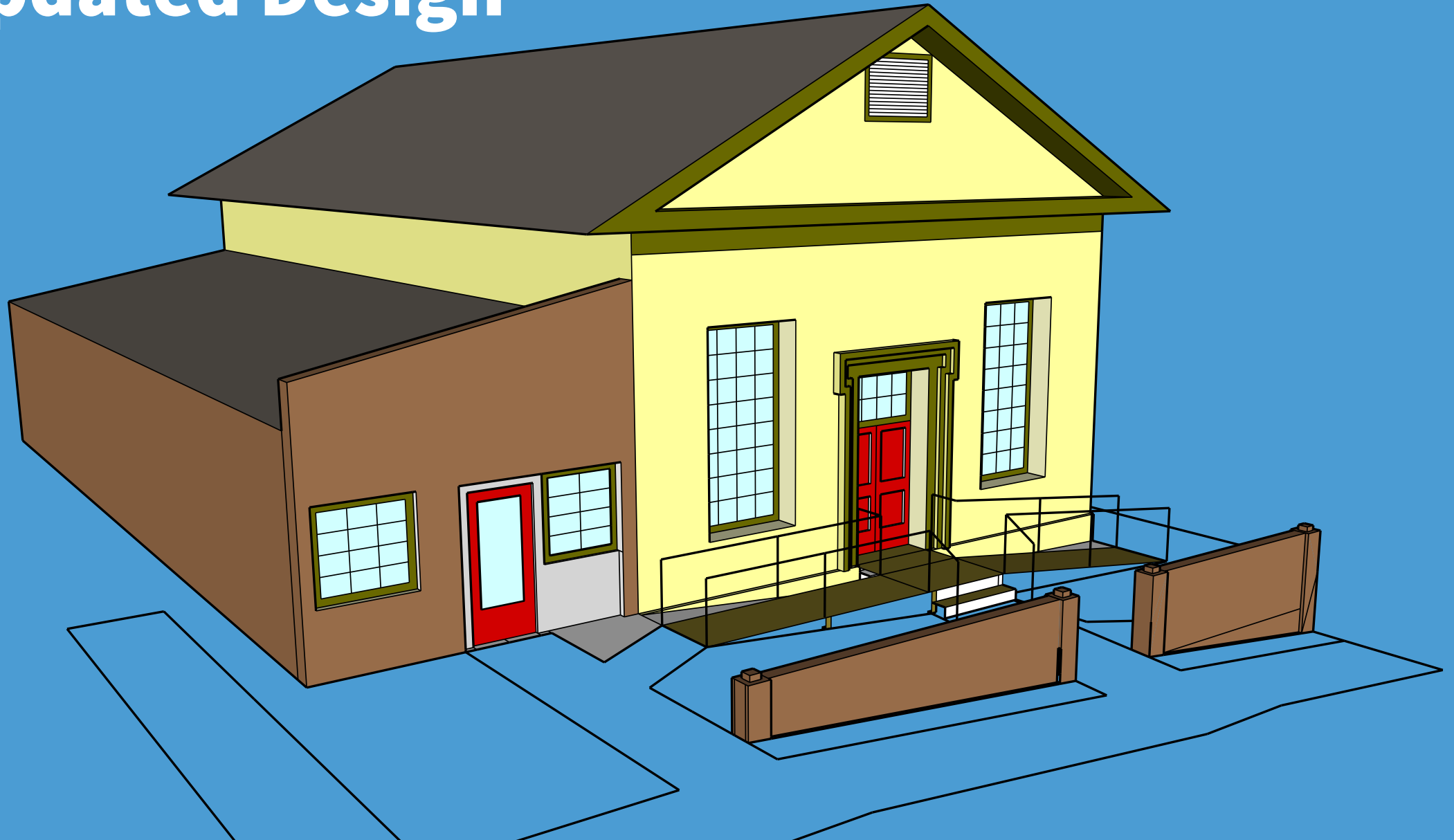


Graham Memorial

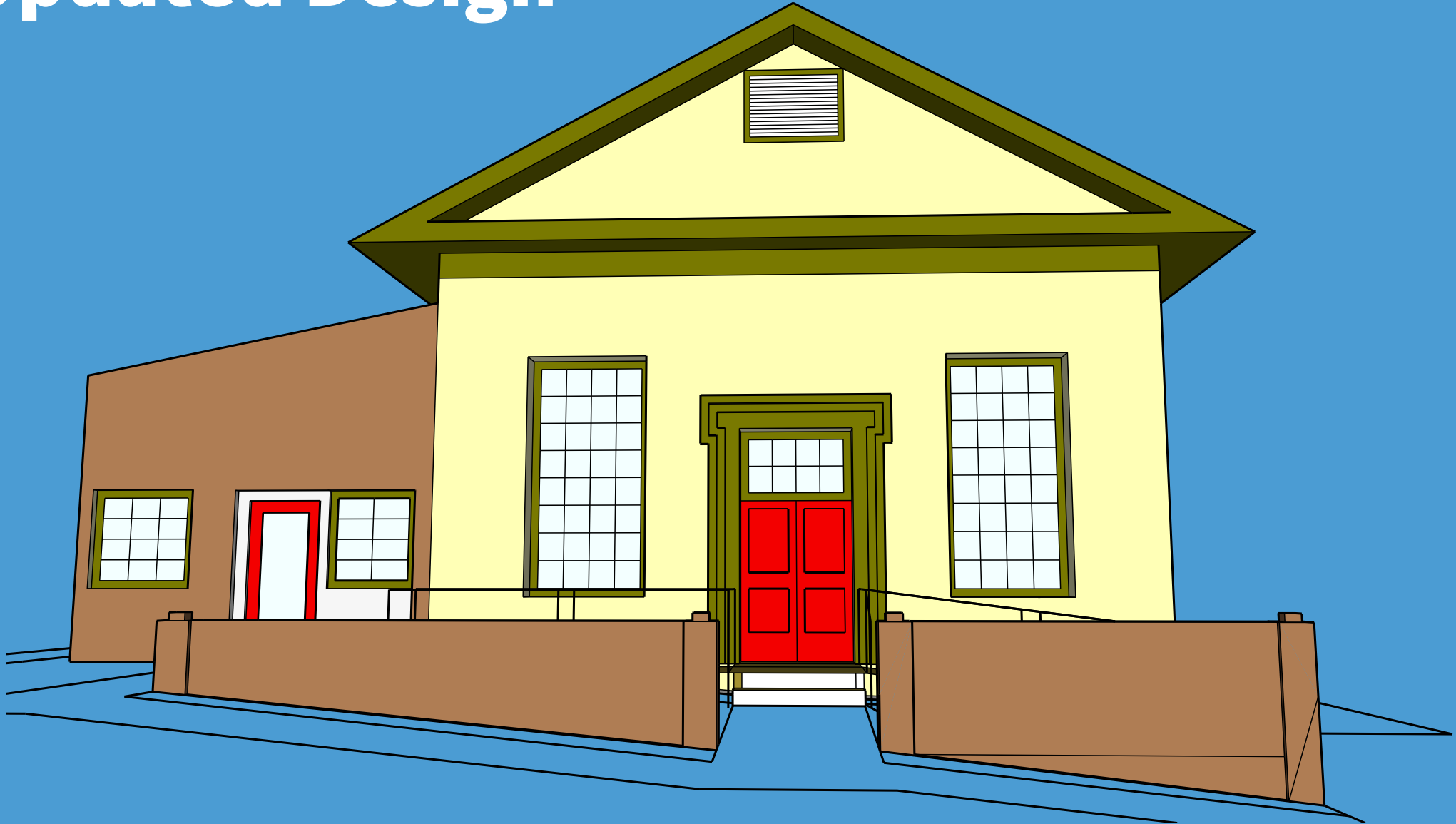
Updated Design



Updated Design



Updated Design



Updated Design

