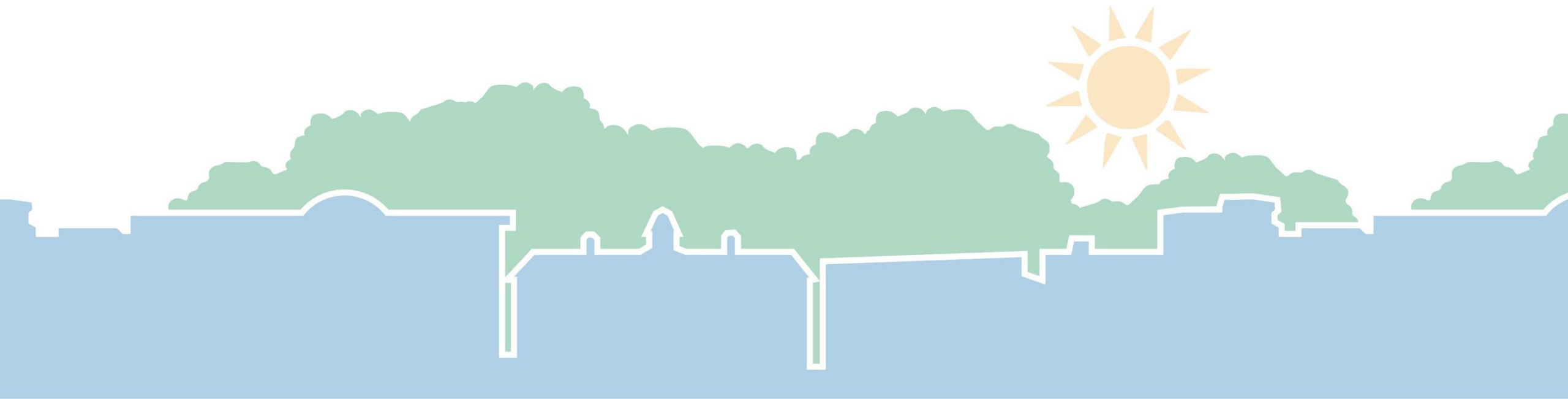


Town Council

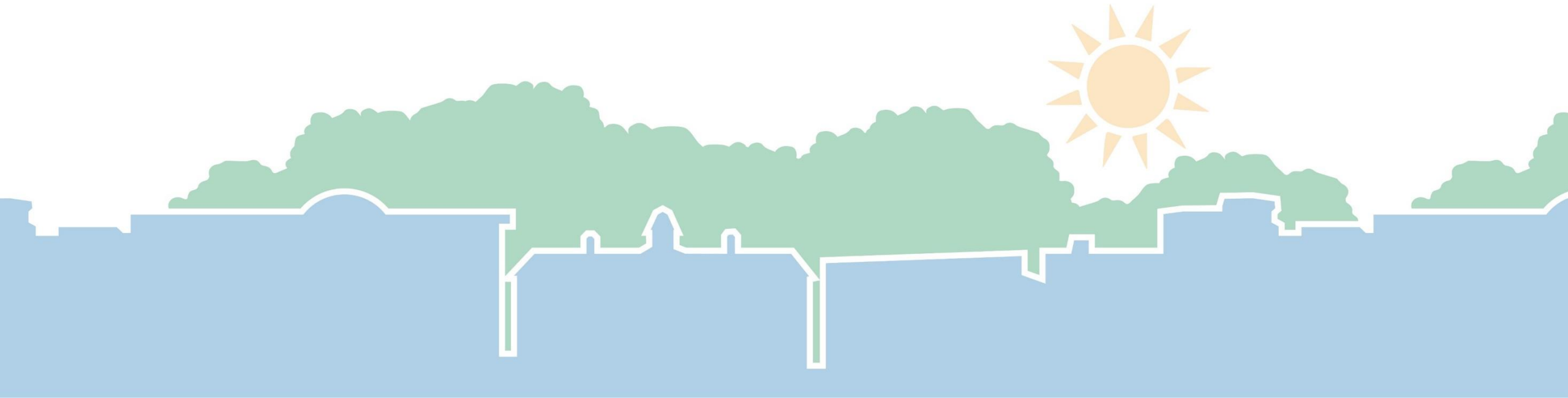
Update to Council on the Complete FLUM

May 6, 2020



Staff Recommendation:

Informational Update to Council on the Complete FLUM & Revised Engagement Plans

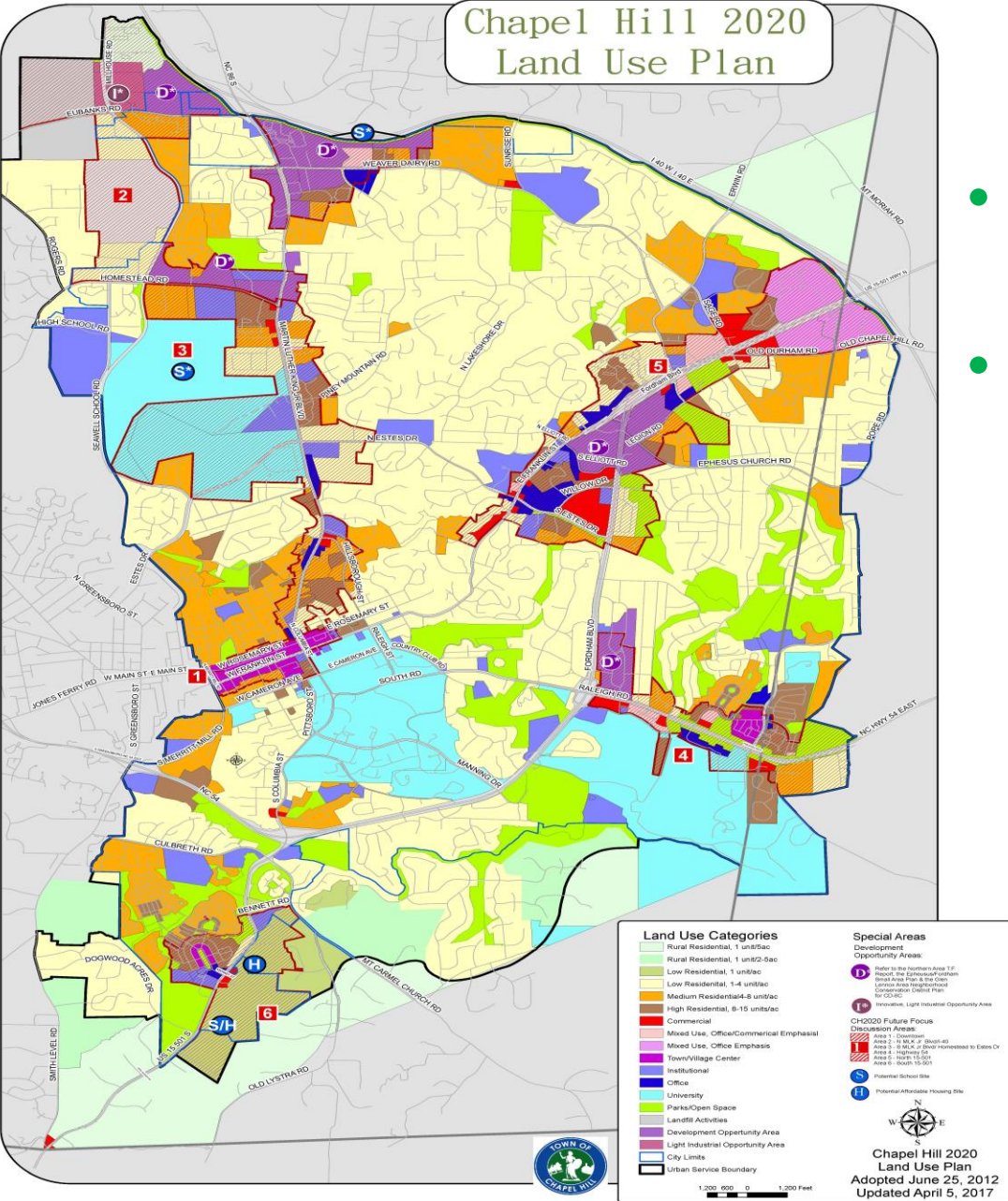




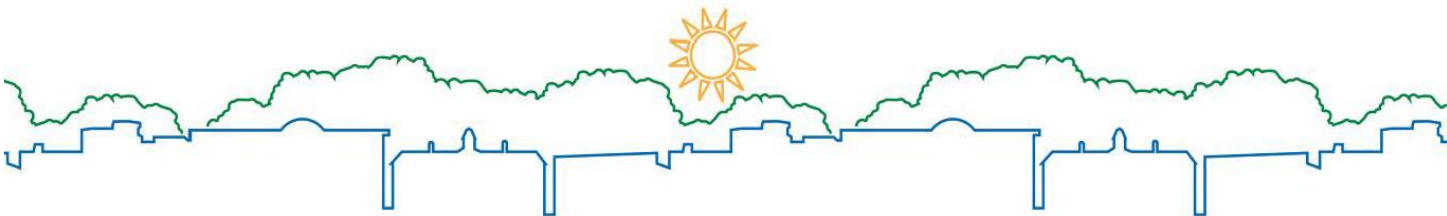
Components of the Future Land Use Map

- Explanation of the Future Land Use Map & Its Components
- Guiding Statements
- Town-wide Future Land Use Map
- Map Book
 - Resiliency Assessment Maps (Flooding & Extreme Heat)
 - Long Term Network Facilities Map (Chapel Hill Mobility & Connectivity Plan)
- Individual Focus Area Maps with Focus Area Principles

Changes from the Land Use Plan



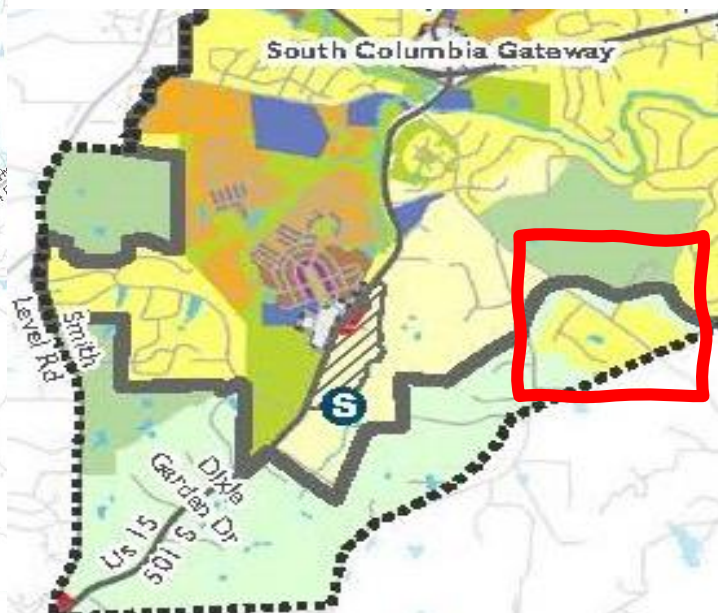
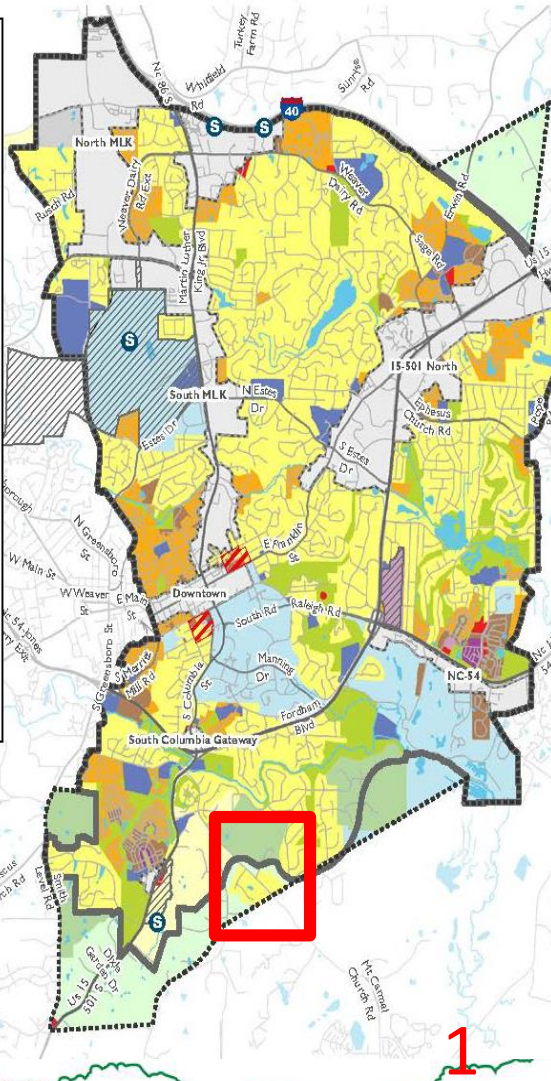
- Definitions for Land Use Categories with photos
- Changes to Land Use Plan from *CH 2020*
 - Eliminated & combined some Land Use Categories
 - Corrected inconsistencies with the Zoning Atlas
 - Replaced Rural Residential 1 unit/2-5 acres with Rural Residential 1 unit/acre
 - Corrected errors on the Land Use Plan



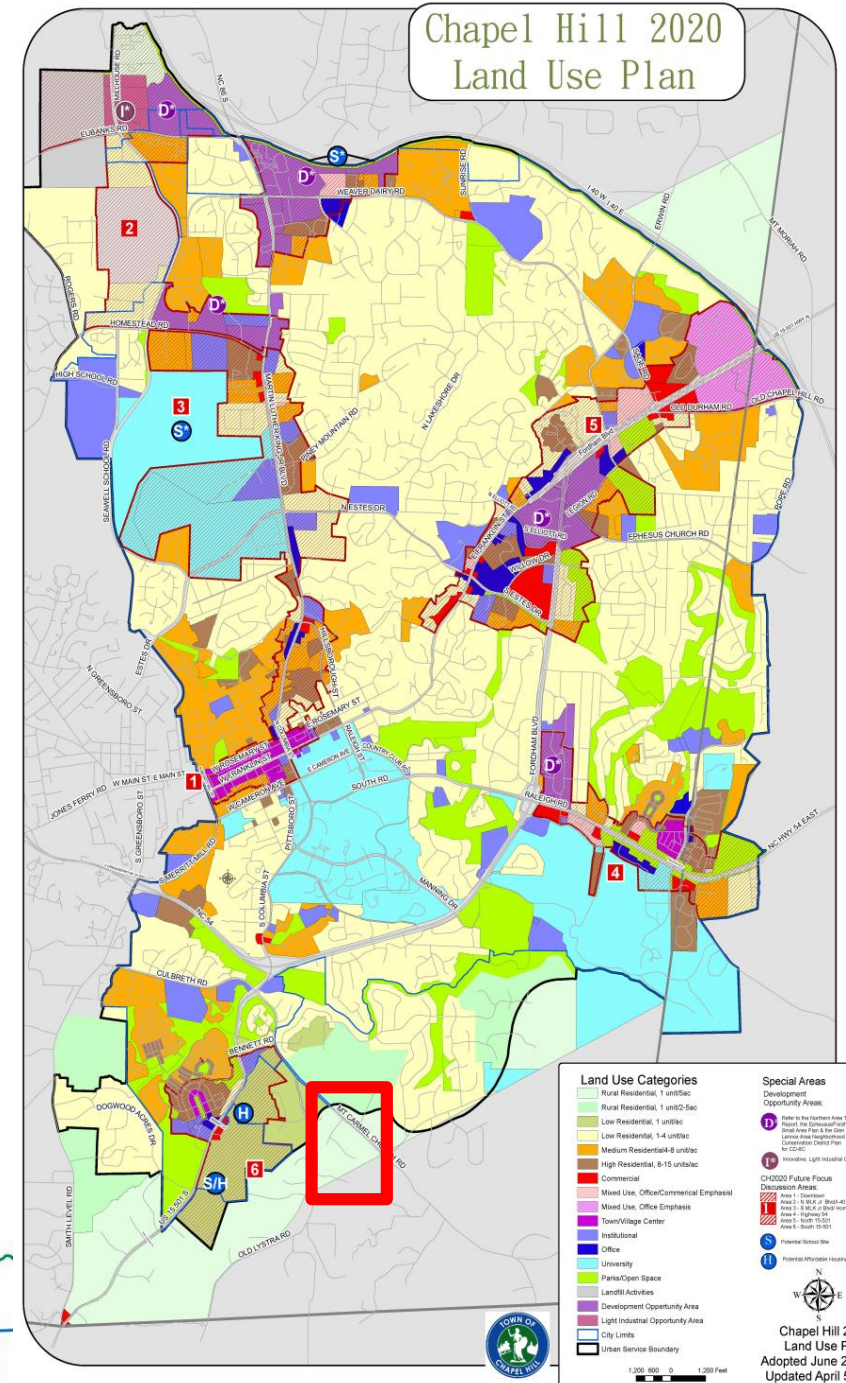
Changes from the Land Use Plan

Future Land Use Map

- Chapel Hill Future Land Use Map (2049)**
- Rural Residential, 1 unit / 5 acres
 - Rural Residential, 1 unit / acre
 - Very low residential, 1 unit / acre
 - Low Residential, 1-4 units / acre
 - Medium Residential, 4-8 units / acre
 - High Residential, 8-15 units / acre
 - Commercial / Office
 - Mixed Use
 - Village Center
 - Institutional
 - University
 - Parks/Open Space
 - Landfill Activities
 - Subject to Development Agreement
 - Traditional University Supportive Uses
 - Jurisdictional Limits
 - Urban Service Area
 - Focus Area - See Focus Area Map
 - S Potential School Site

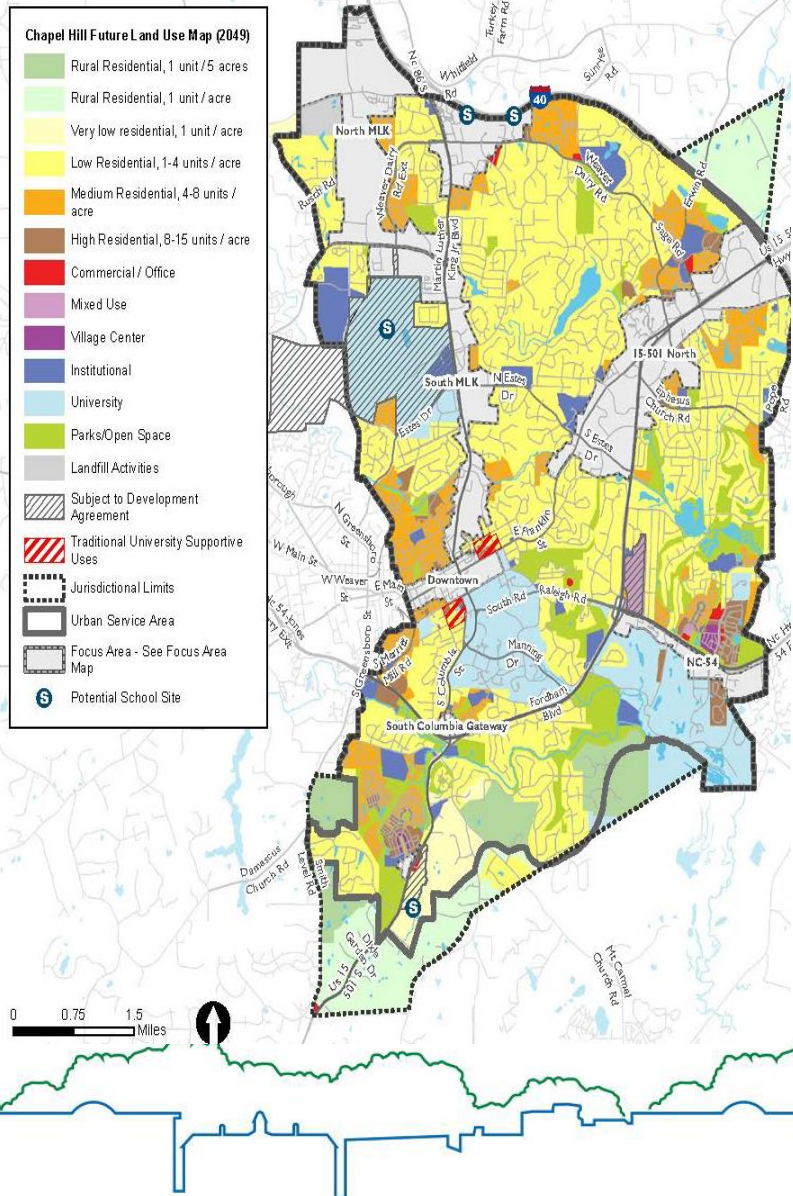


Changed from RR 1 DU/5 acre to Low Residential

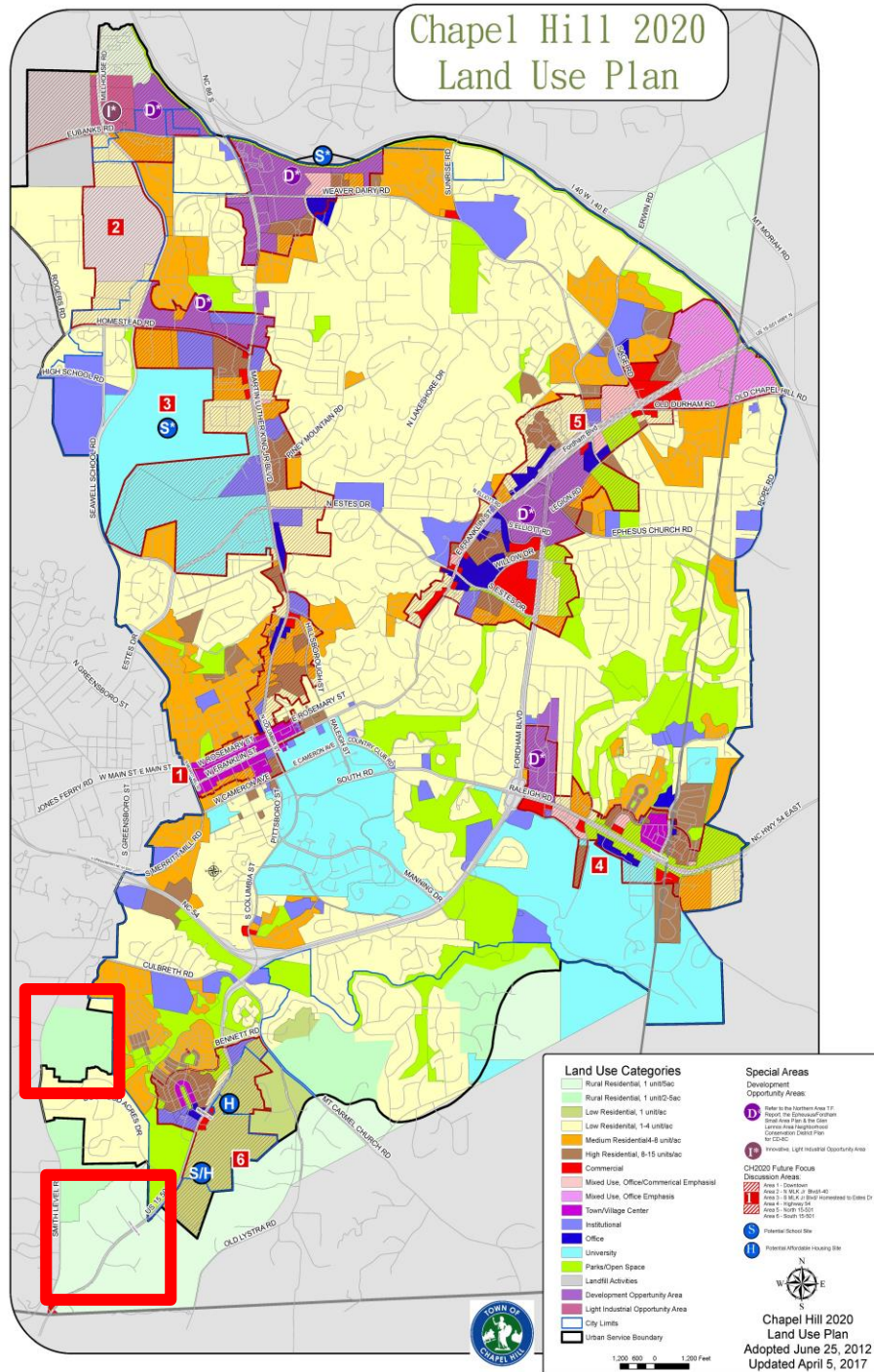
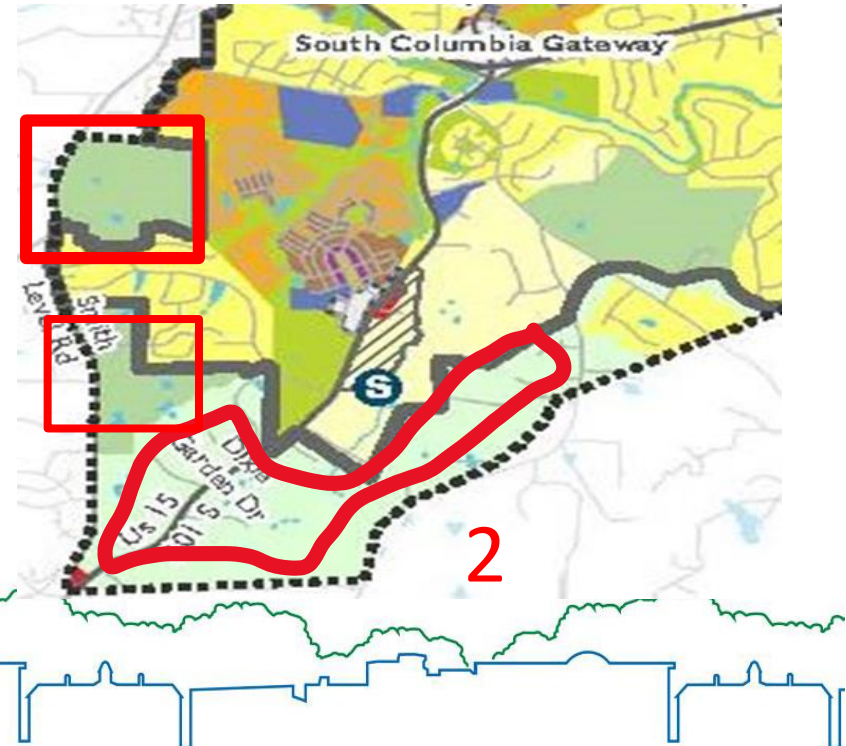


Changes from the Land Use Plan

Future Land Use Map



- Correct error to align these areas with existing zoning
- 1 DU/acre & 1 DU/5 acres



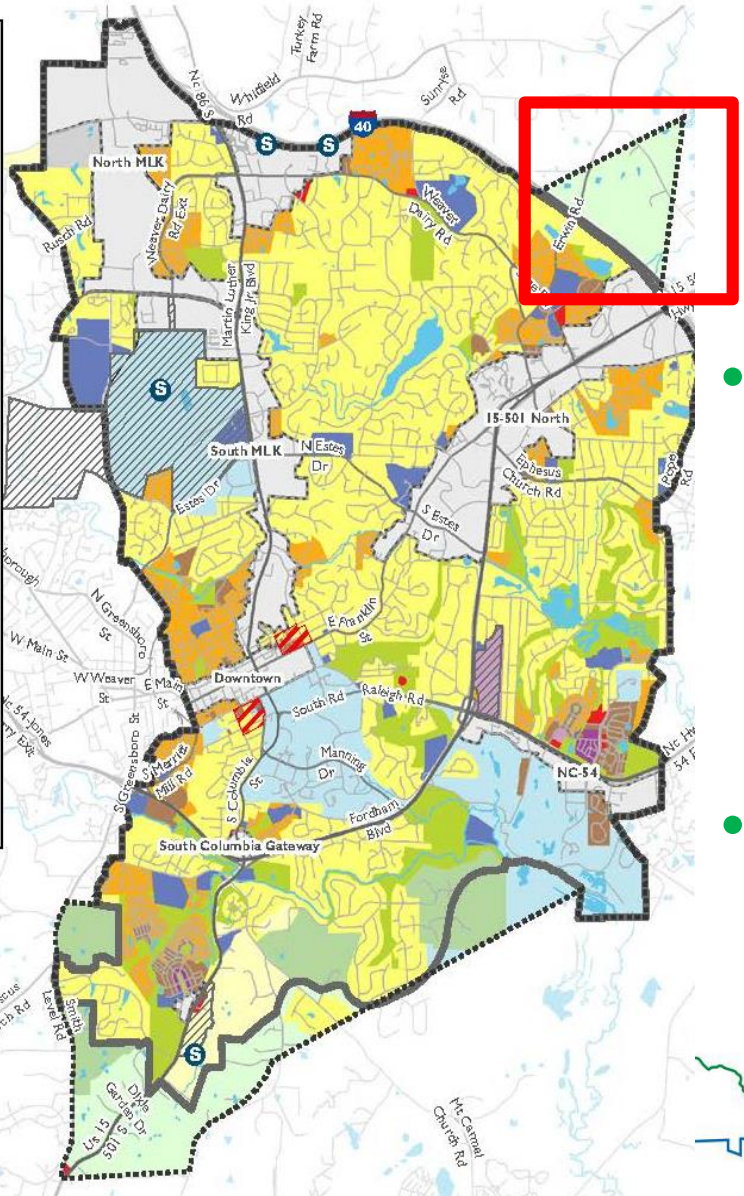
Changes from the Land Use Plan



Future Land Use Map

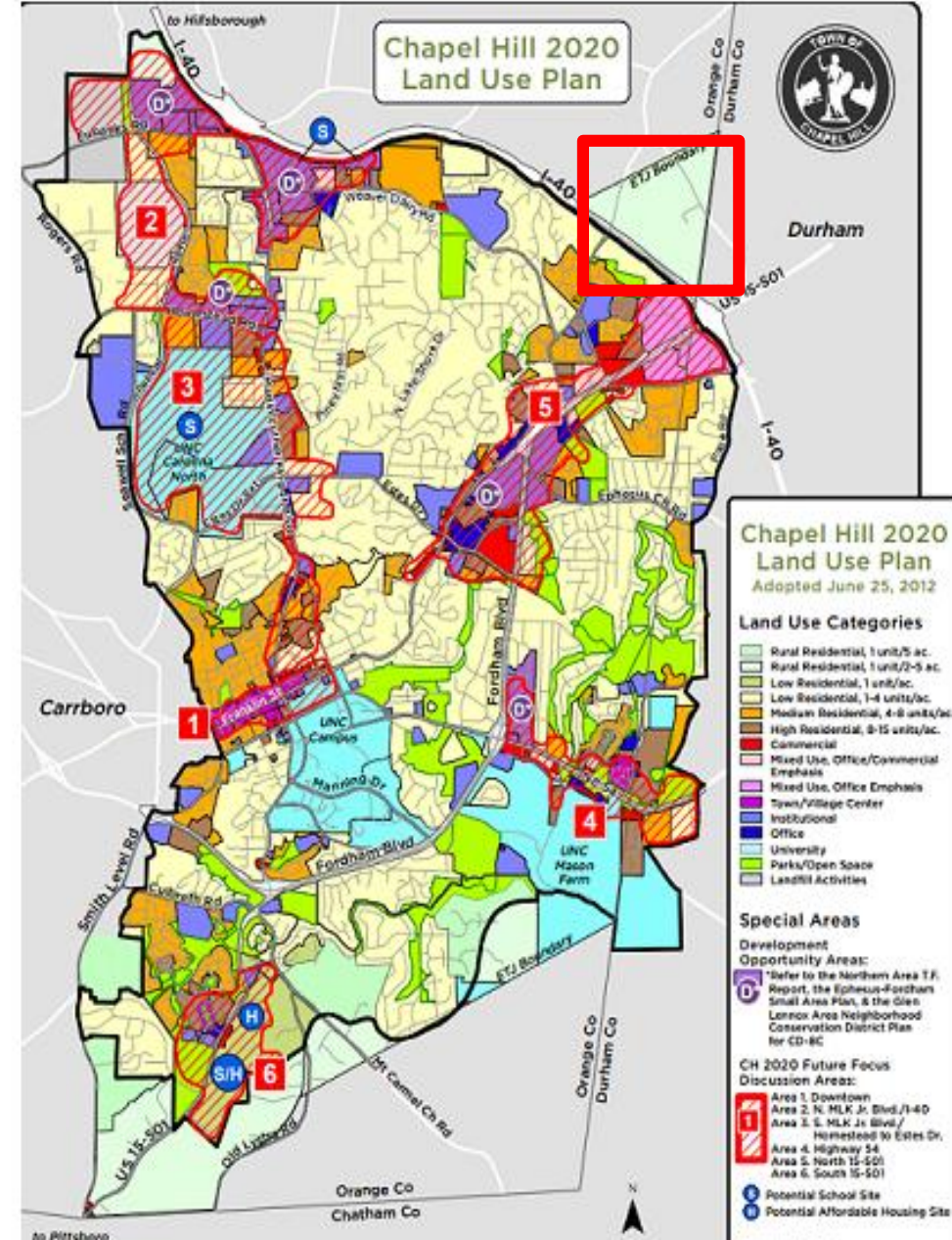
Chapel Hill Future Land Use Map (2049)

- Rural Residential, 1 unit / 5 acres
- Rural Residential, 1 unit / acre
- Very low residential, 1 unit / acre
- Low Residential, 1-4 units / acre
- Medium Residential, 4-8 units / acre
- High Residential, 8-15 units / acre
- Commercial / Office
- Mixed Use
- Village Center
- Institutional
- University
- Parks/Open Space
- Landfill Activities
- Subject to Development Agreement
- Traditional University Supportive Uses
- Jurisdictional Limits
- Urban Service Area
- Focus Area - See Focus Area Map
- Potential School Site



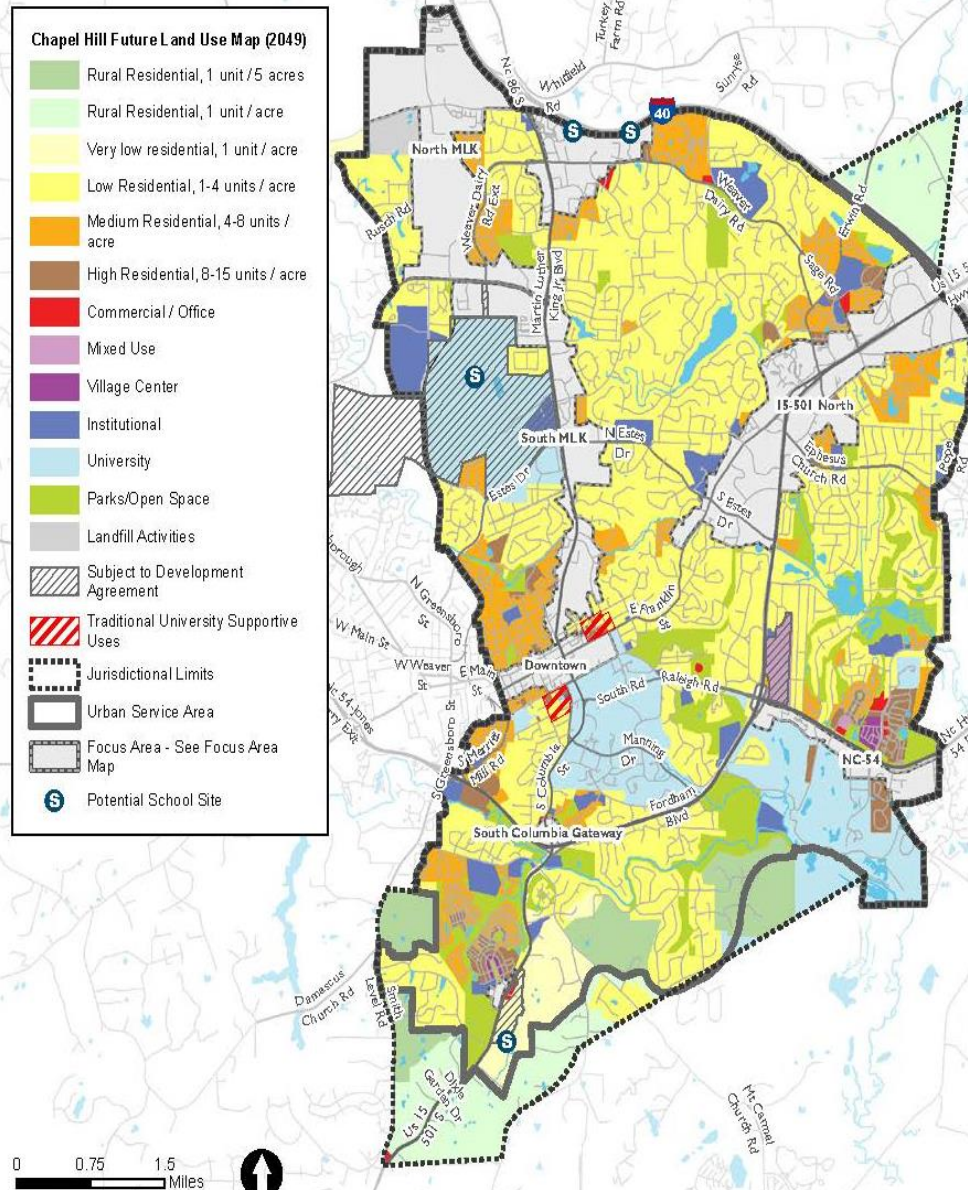
4

- Align better with existing zoning & parcel size
- 1 DU/acre on FLUM

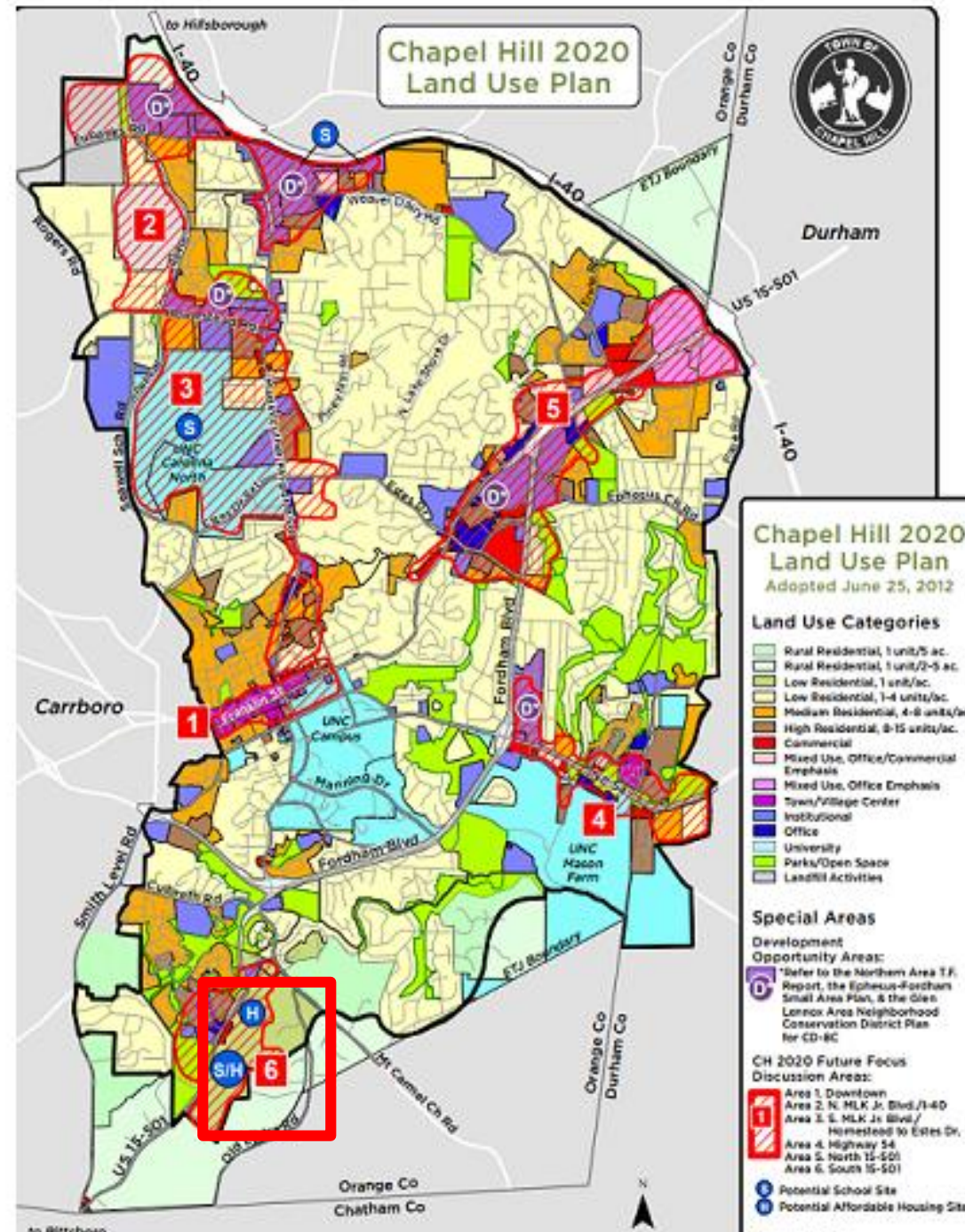


Changes from the Land Use Pla

Future Land Use Map



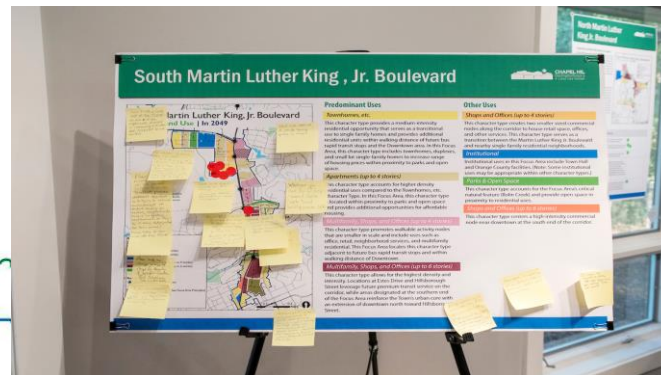
Removed "H" for Potential Affordable Housing Sites



Revised Engagement

❖ Council Engagement

- Individual electronic review of Future Land Use Map
- Online presentations regarding the Precedent Images, urban design, & the proposed changes to the Land Use Plan
- Council's individual comments placed on Project website

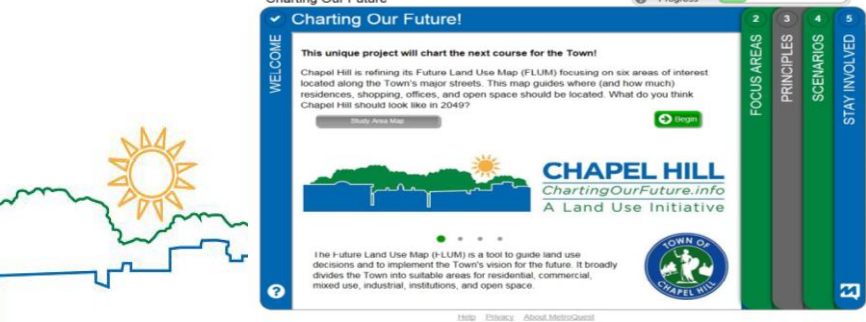
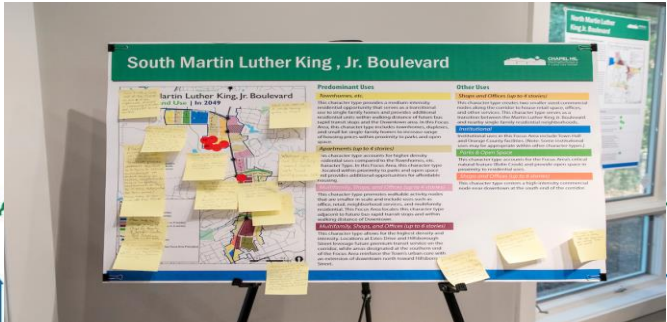


Revised Engagement



❖ Board & Commission Electronic Review of Future Land Use Map

❖ Community Input via Online Platform (Konveio)



Next Steps for Charting Our Future

- ❖ Adoption prior to Council's summer break in the schedule of meetings, if possible. If not, fall of 2020

- ❖ Issue RFP for LUMO Rewrite

Staff Recommendation:

Informational Update to Council on the Complete FLUM & Revised Engagement Plans

