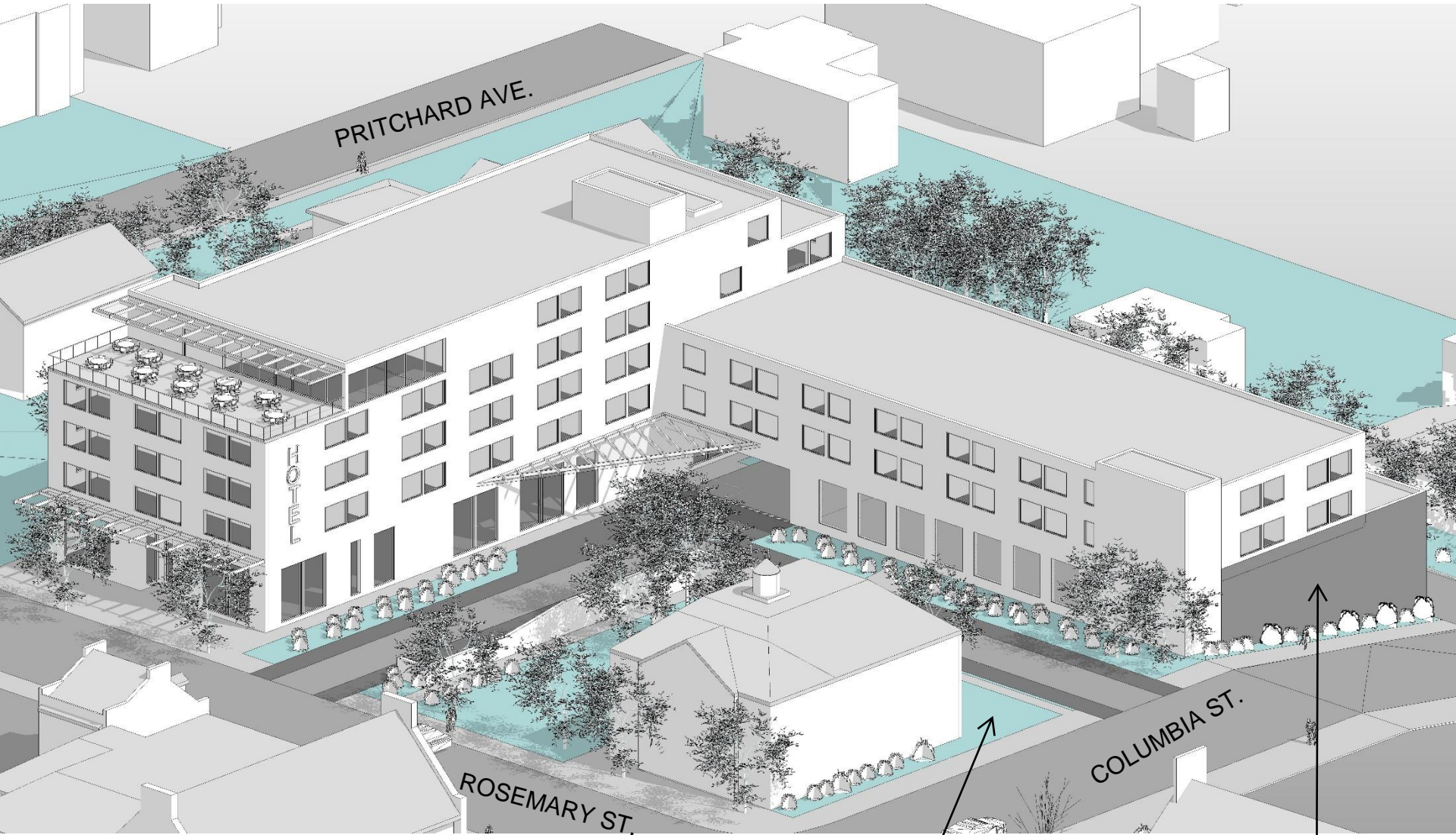


# W. Rosemary St. Hotel - Revisions from CDC Concept Options

- Height
  - Was 7/4 stories; now 5/4/3 stories
  - Revised option is within solar overlay except for single story penetration on Rosemary wing
- Massing - West Rosemary Guide
  - Maintain 20' building setback at Rosemary St.
  - Step down to 4 stories at north adjacent to residential
  - Step down at Columbia entry view
  - Ground floor use encourages pedestrian activity
- Concealed parking and service functions
  - Structured parking / valet solution
  - Refuse under roof
- Place-making improvements around Historic Town Hall
  - 2 parking /park options for consideration
    - Option 1: Provide more Town parking
    - Option 2: Provide more pocket park

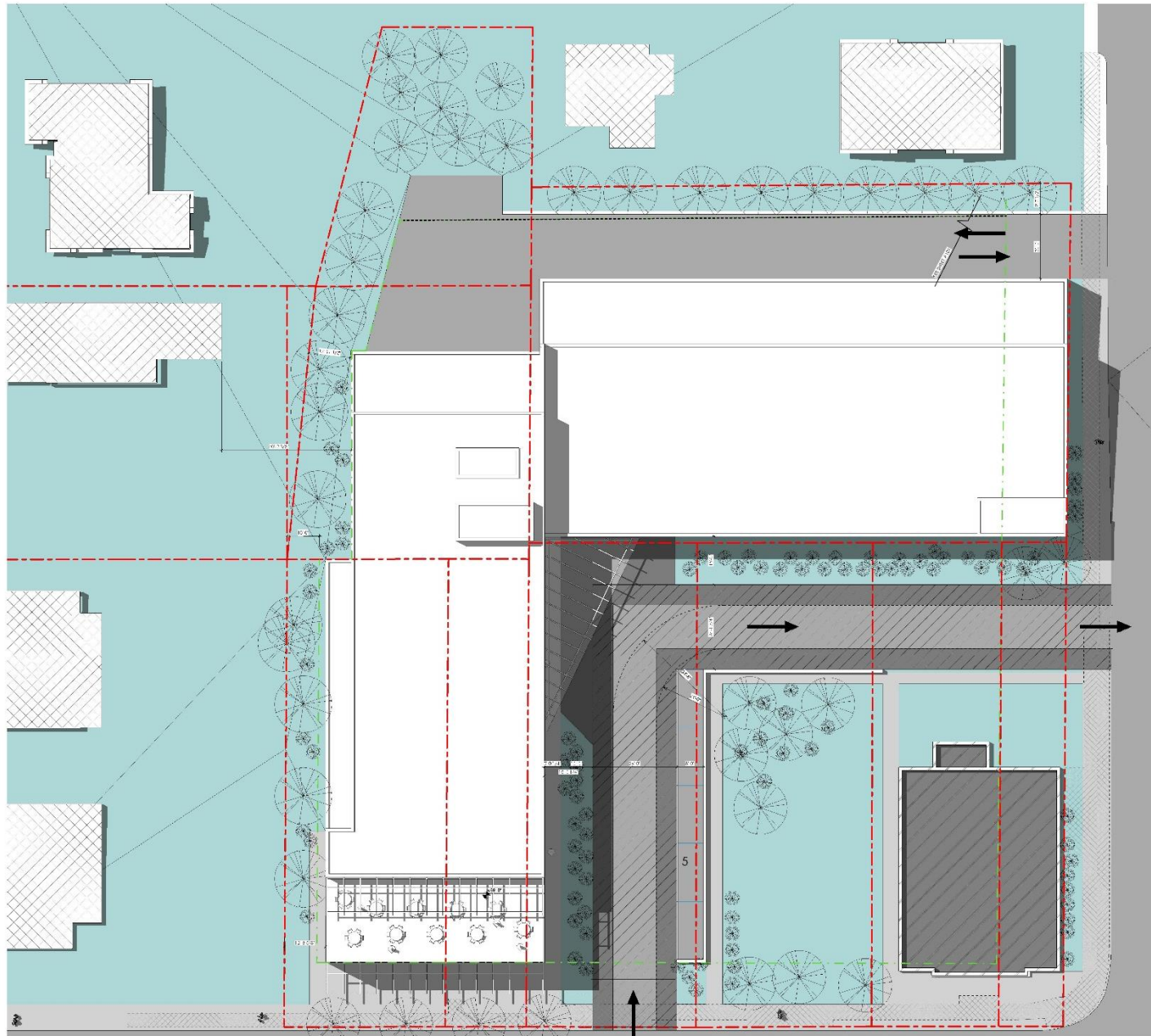
# Concept Plan - Current Height and Massing



PARK OPTION 1  
SHOWN

GATEWAY MURAL  
SHOWN

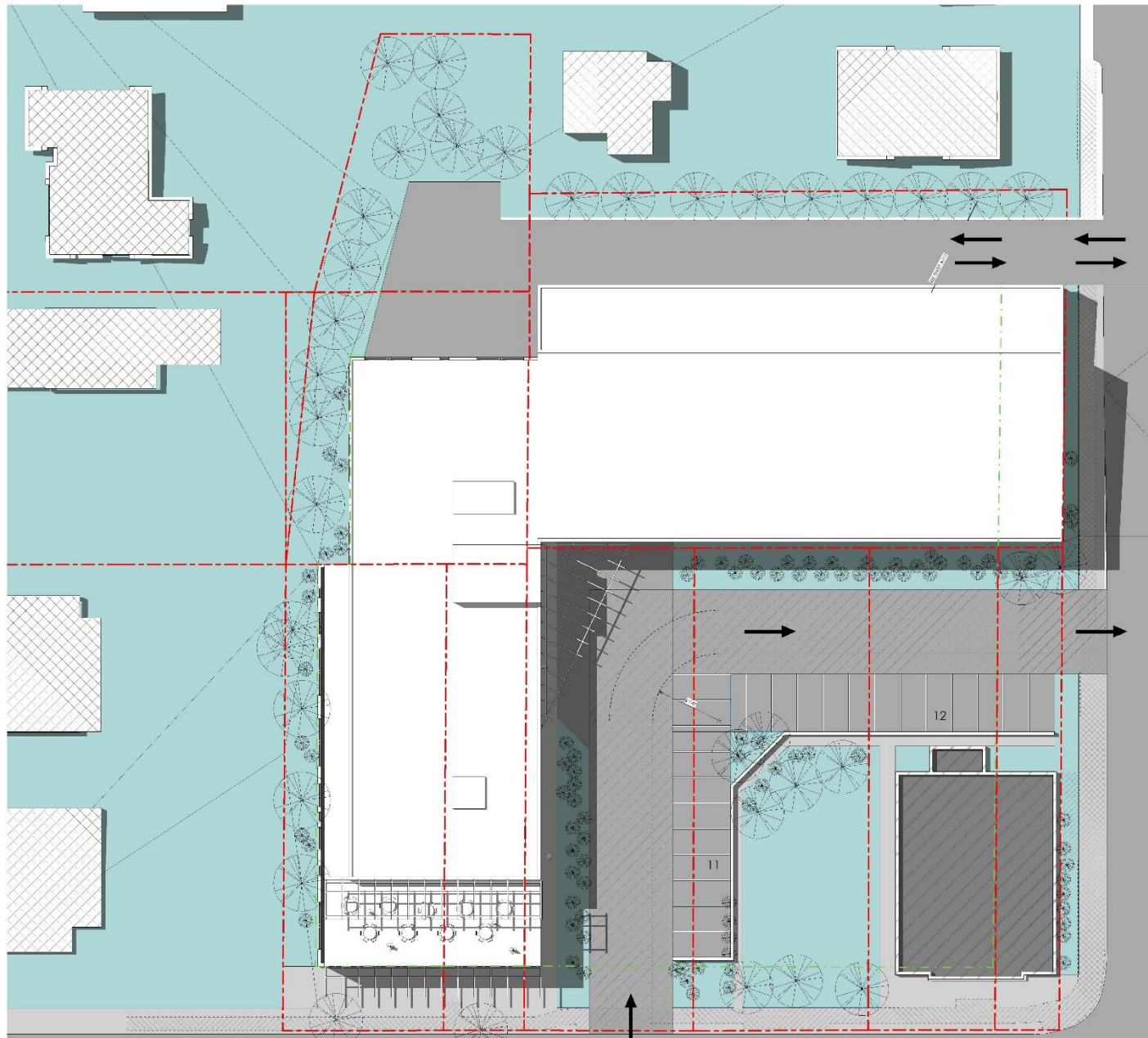
# Concept Plan - Park and Parking Option 1



Rosemary St.

Columbia St.

# Concept Plan - Park and Parking Option 2



Rosemary St.

Columbia St.