

# Greenfield Commons



Chapel Hill, North Carolina



Certificate of Appropriateness Application

March 10, 2017



125 N. Harrington St.  
Raleigh, NC 27603  
919/833-6413  
919/836-1280 FAX  
ClineDesignAssoc.co  
m

DHIC  
**Greenfield Commons**  
Chapel Hill, North Carolina

NOT FOR  
CONSTRUCTION

CERTIFICATE  
OF  
APPROPRIATENESS  
APPLICATION

PROJECT: 015224  
DATE: 03.10.17  
REVISIONS: DATE

SHEET NUMBER	SHEET NAME
A0.01	COVER
A0.02	ILLUSTRATIVE SITE PLAN
A1.11	EXTERIOR ELEVATIONS
A1.12	BUILDING PLANS
A1.13	BUILDING PLANS
A1.14	EXTERIOR BUILDING MATERIALS

DRAWN BY: Author  
CHECKED BY: Checker

COVER

A0.01



ALL RIGHTS RESERVED. No part of this publication may be reproduced, stored in a retrieval system, or transmitted, in any form or by any means, electronic, mechanical, photocopying, recording, or by any information storage and retrieval system, without the prior written permission of the publisher.

NOT FOR CONSTRUCTION

CERTIFICATE OF APPROPRIATENESS APPLICATION

PROJECT: 015224  
 DATE: 03.10.17  
 REVISIONS: DATE

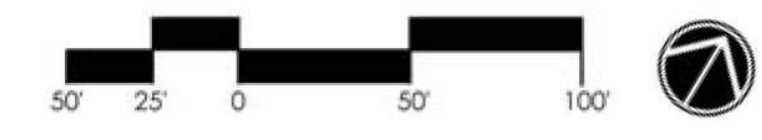
DRAWN BY: Author  
 CHECKED BY: Checker

ILLUSTRATIVE SITE PLAN



Site Data	
Zoning	Ephesus Church/ Fordham Form District
Site Area	± 3.70 Acres
Density	± 21.6 Units per Acre
Parking	± 80 Proposed Spaces

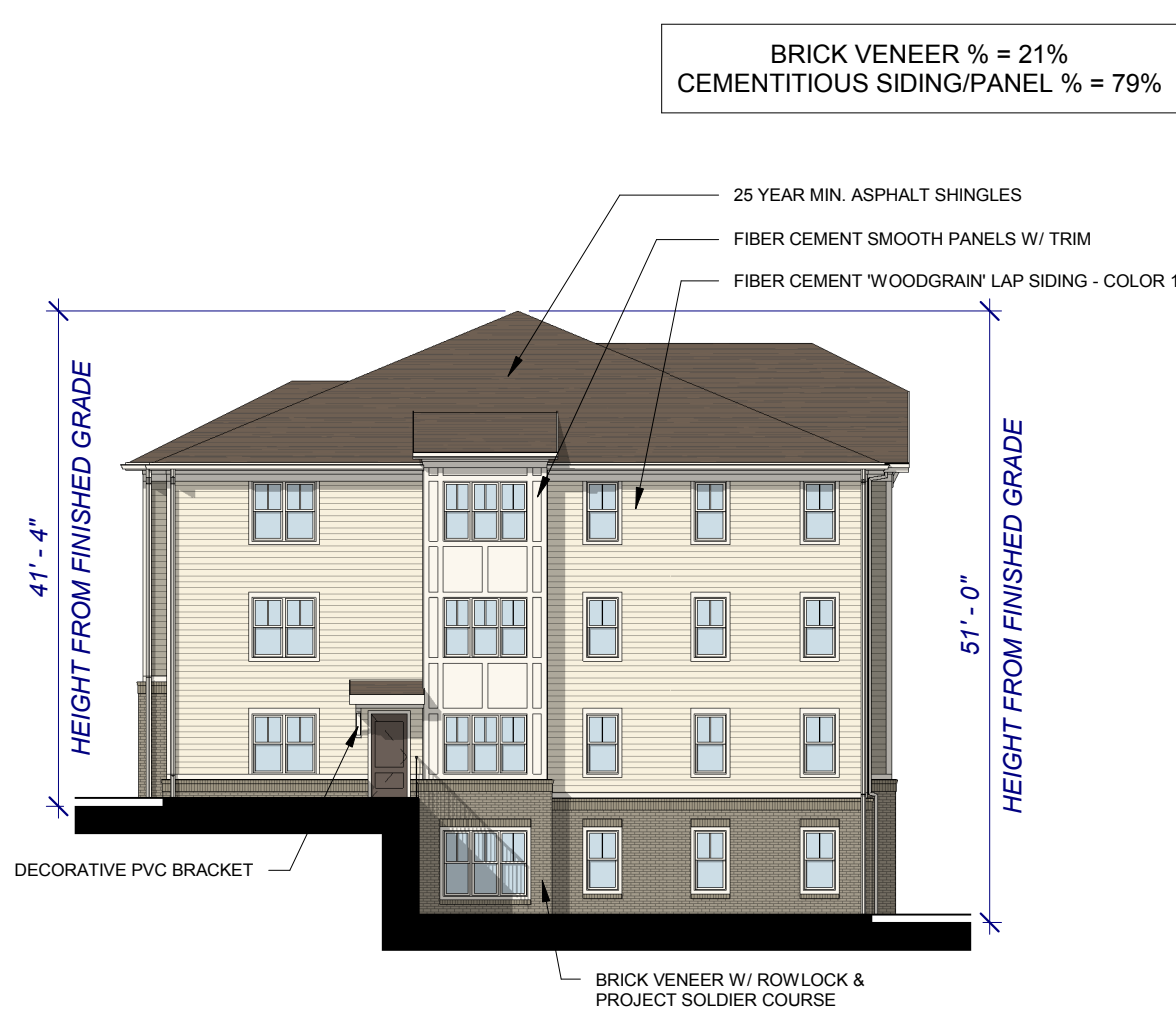
- Site Amenities**
- Indoor or Outdoor Sitting Areas (min. 3 Locations)
  - Multi-Purpose Room (250 sf)
  - Tenant Storage Areas
  - Covered Drive-Thru / Drop-Off
  - Exercise Room
  - Resident Computer Center (with 2 Computers)



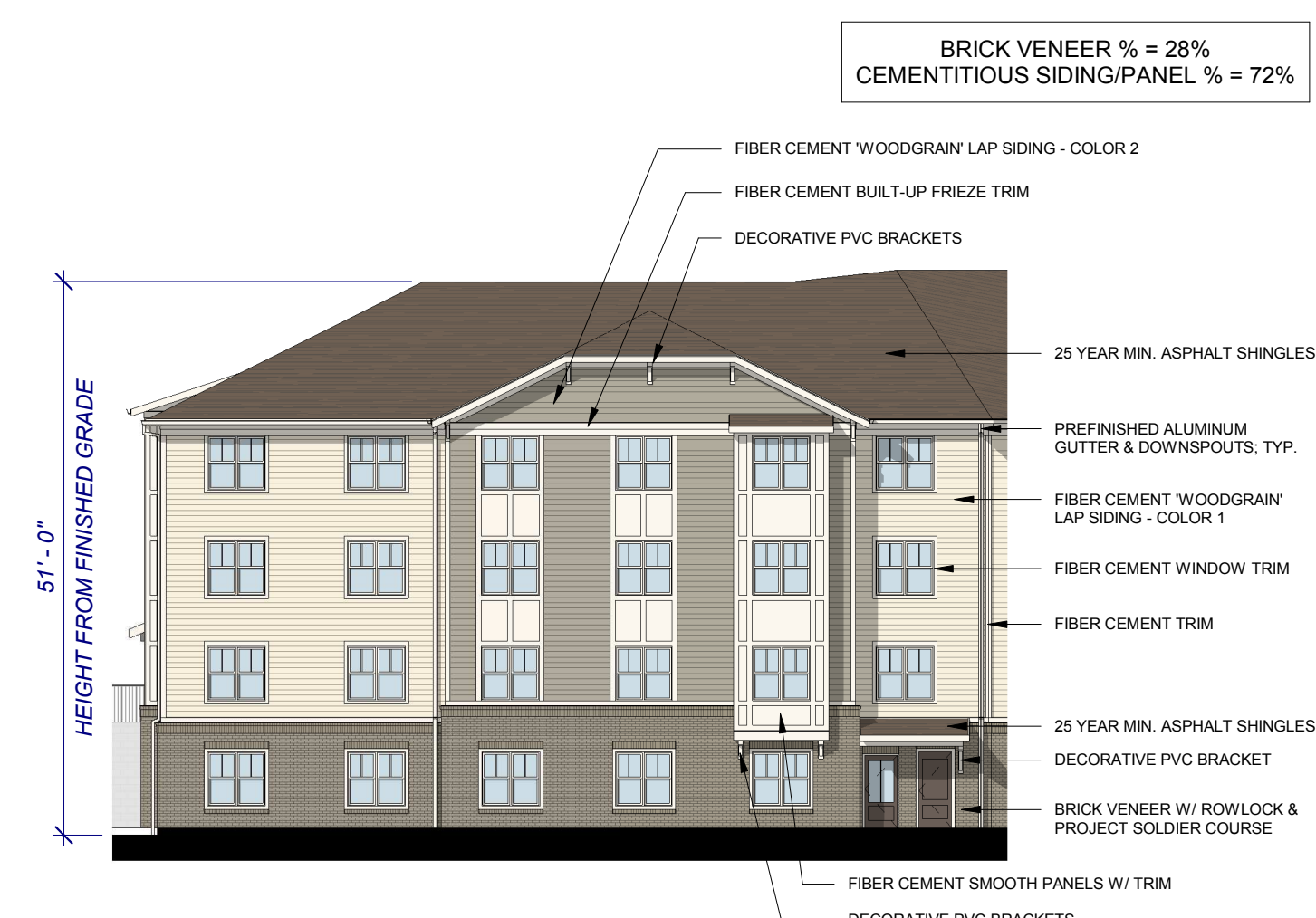
2017.03.10.2017 PM C:\Users\kshah\OneDrive\Documents\Greenfield Commons\Greenfield Commons\_C02\_017\_001.dwg



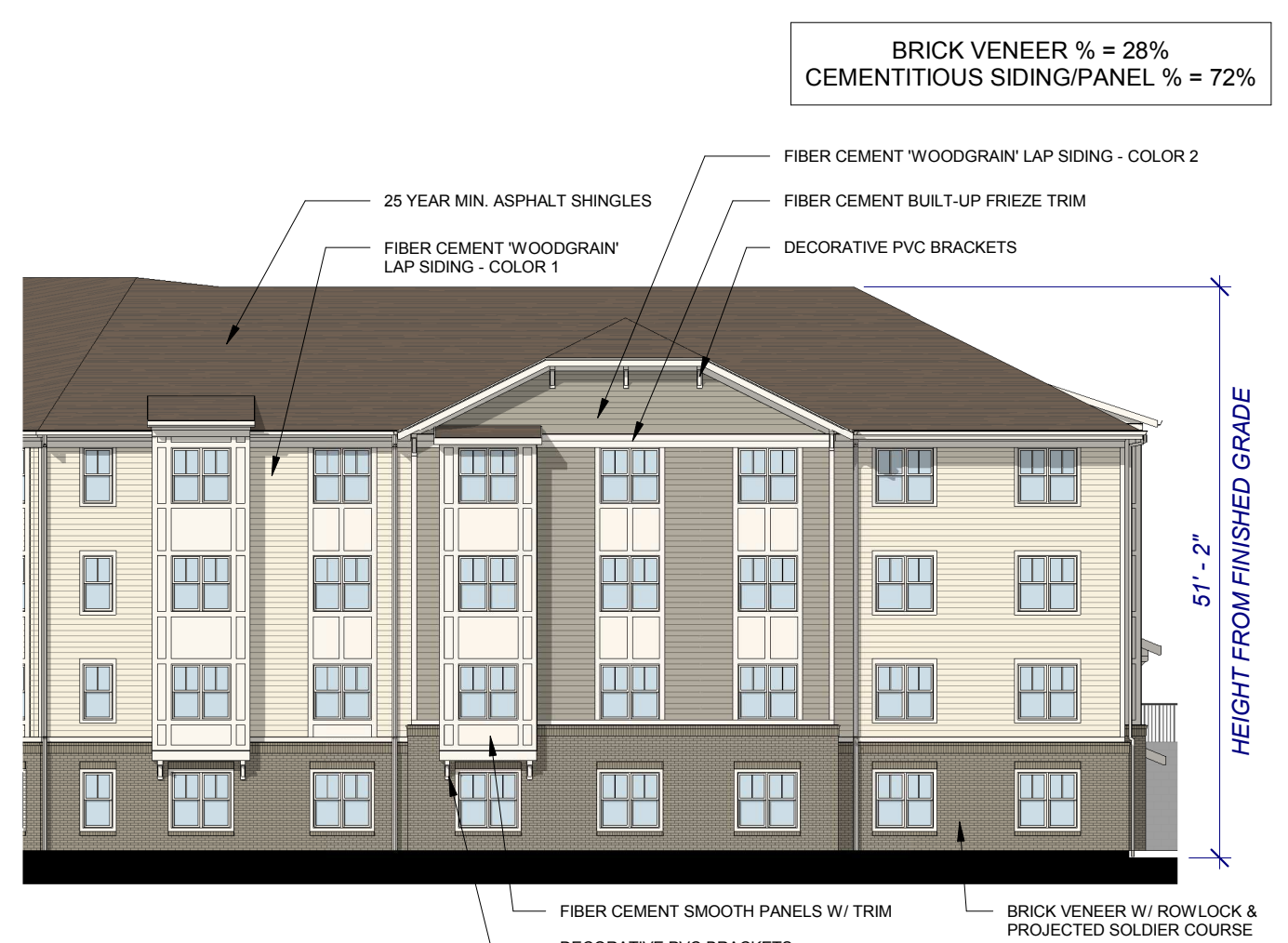
NOTE: A red outline will remove the message. See the keywords property for the PDF for more information.



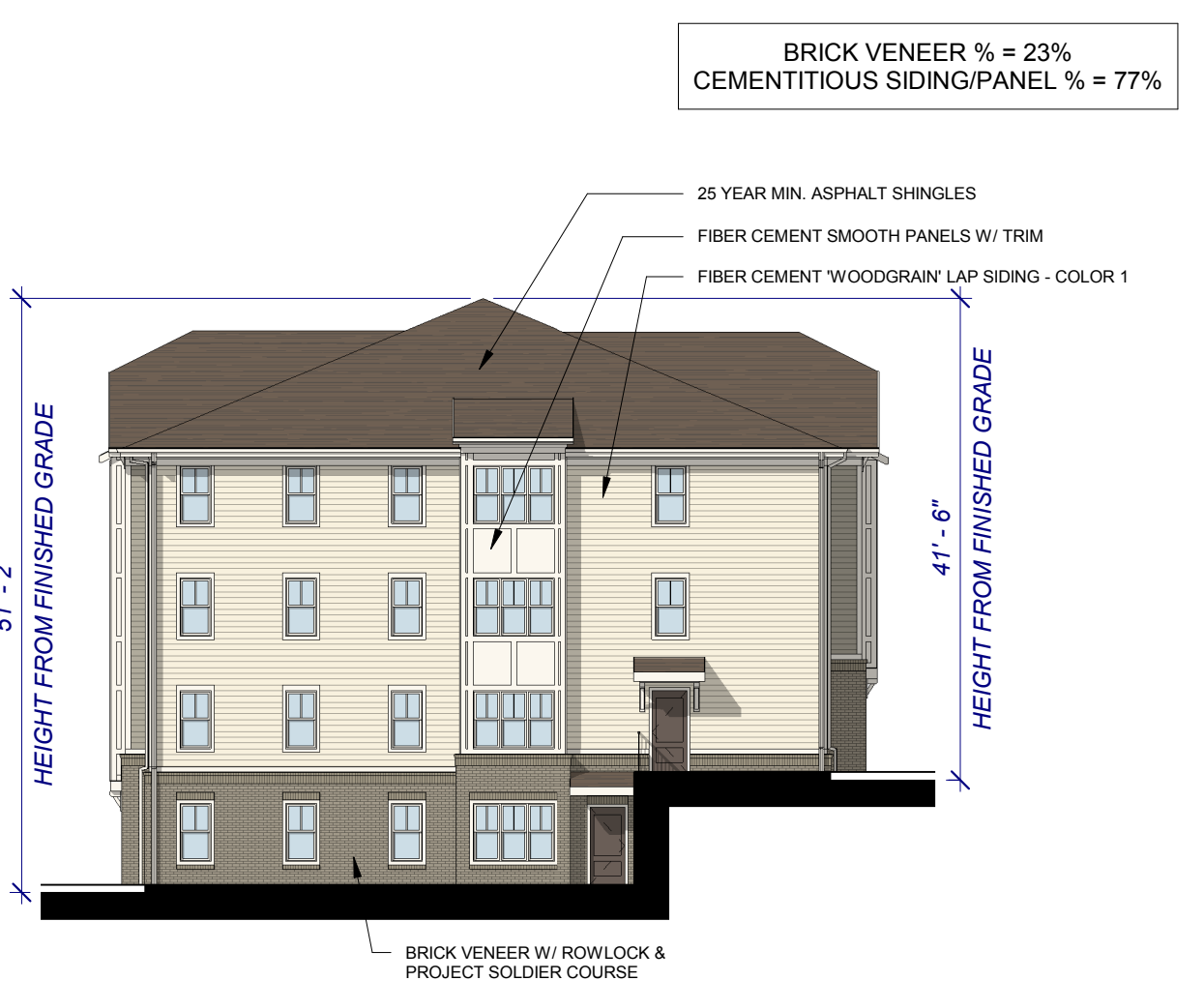
**RIGHT SIDE ELEVATION** 8  
1/16" = 1'-0"



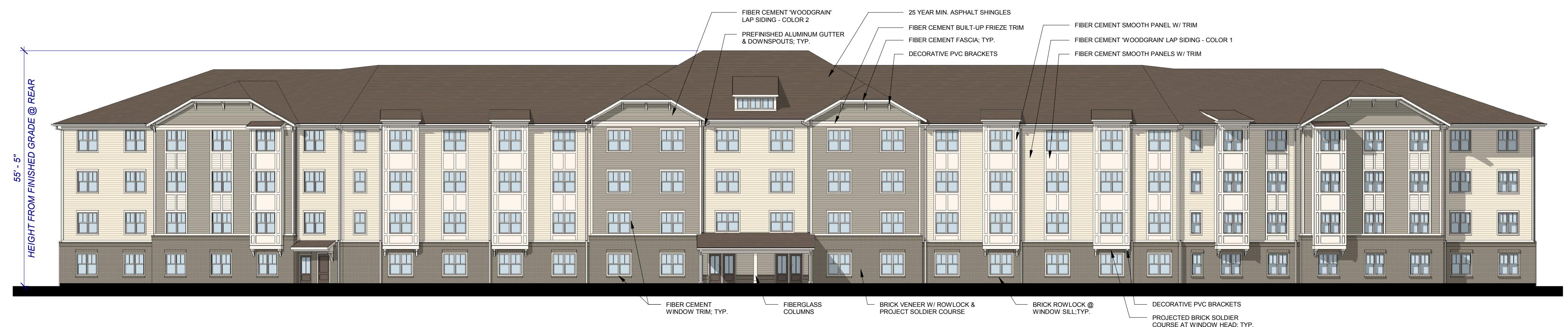
**REAR ELEVATION (LEFT END)** 7  
1/16" = 1'-0"



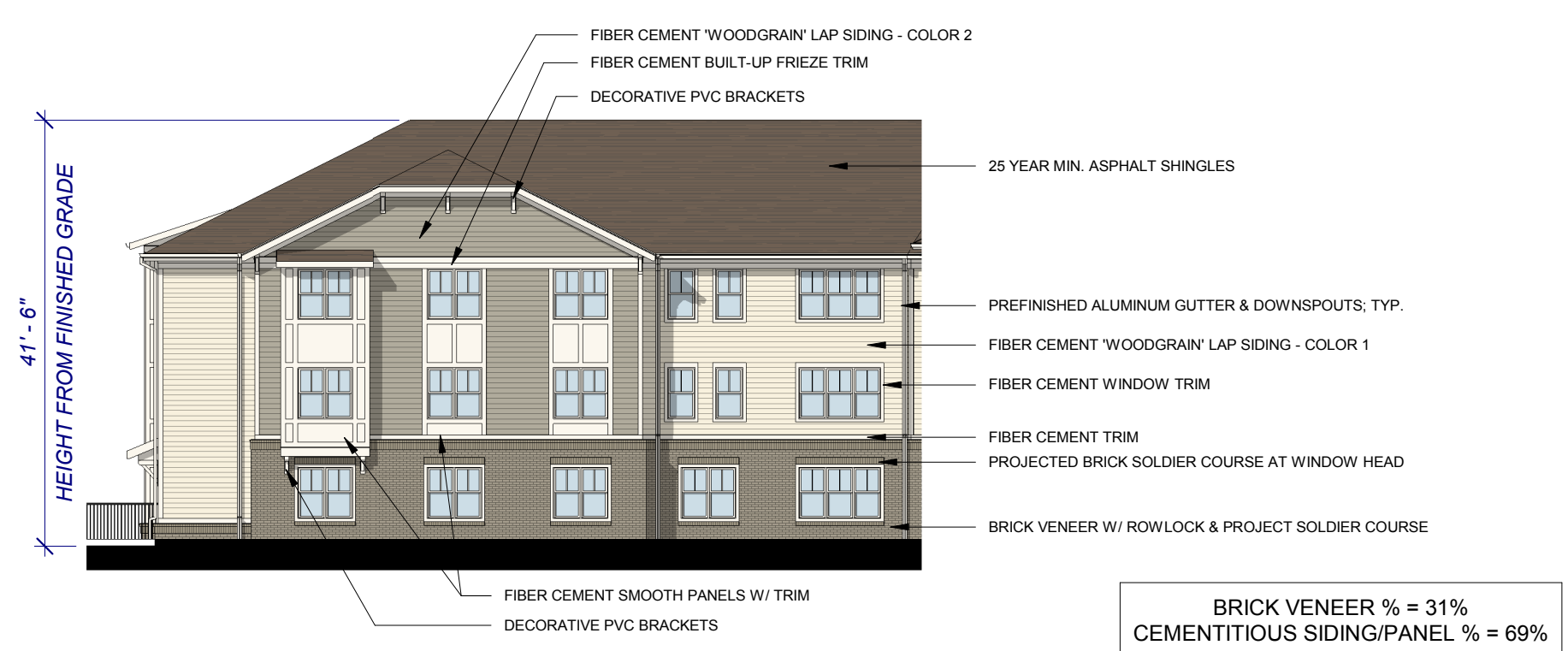
**REAR ELEVATION (RIGHT END)** 6  
1/16" = 1'-0"



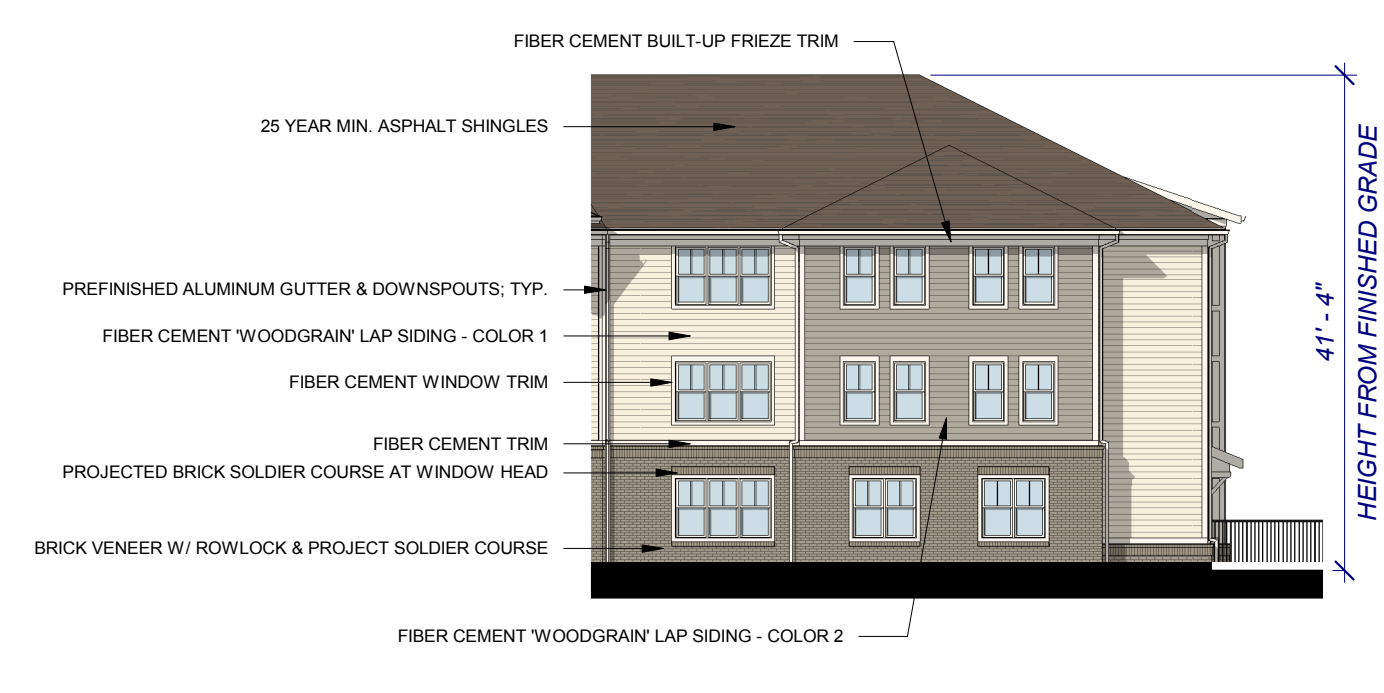
**LEFT SIDE ELEVATION** 5  
1/16" = 1'-0"



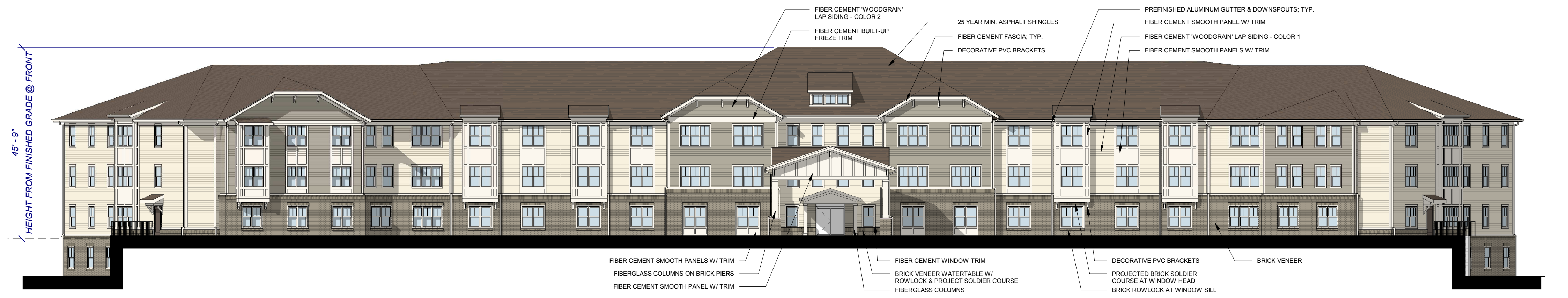
**REAR ELEVATION** 4  
1/16" = 1'-0"



**FRONT ELVATION (LEFT END)** 3  
1/16" = 1'-0"



**FRONT ELEVATION (RIGHT END)** 2  
1/16" = 1'-0"



**FRONT ELEVATION** 1  
1/16" = 1'-0"



125 N. Harrington St.  
Raleigh, NC 27603  
919/833-6413  
919/836-1280 FAX  
ClineDesignAssoc.co  
m

**Greenfield Commons**  
Chapel Hill, North Carolina

DHIC

NOT FOR CONSTRUCTION

FORM DISTRICT PERMIT APPLICATION

PROJECT: 015224  
DATE: 03.10.17  
REVISIONS: DATE

DRAWN BY: Author  
CHECKED BY: Checker

EXTERIOR ELEVATIONS

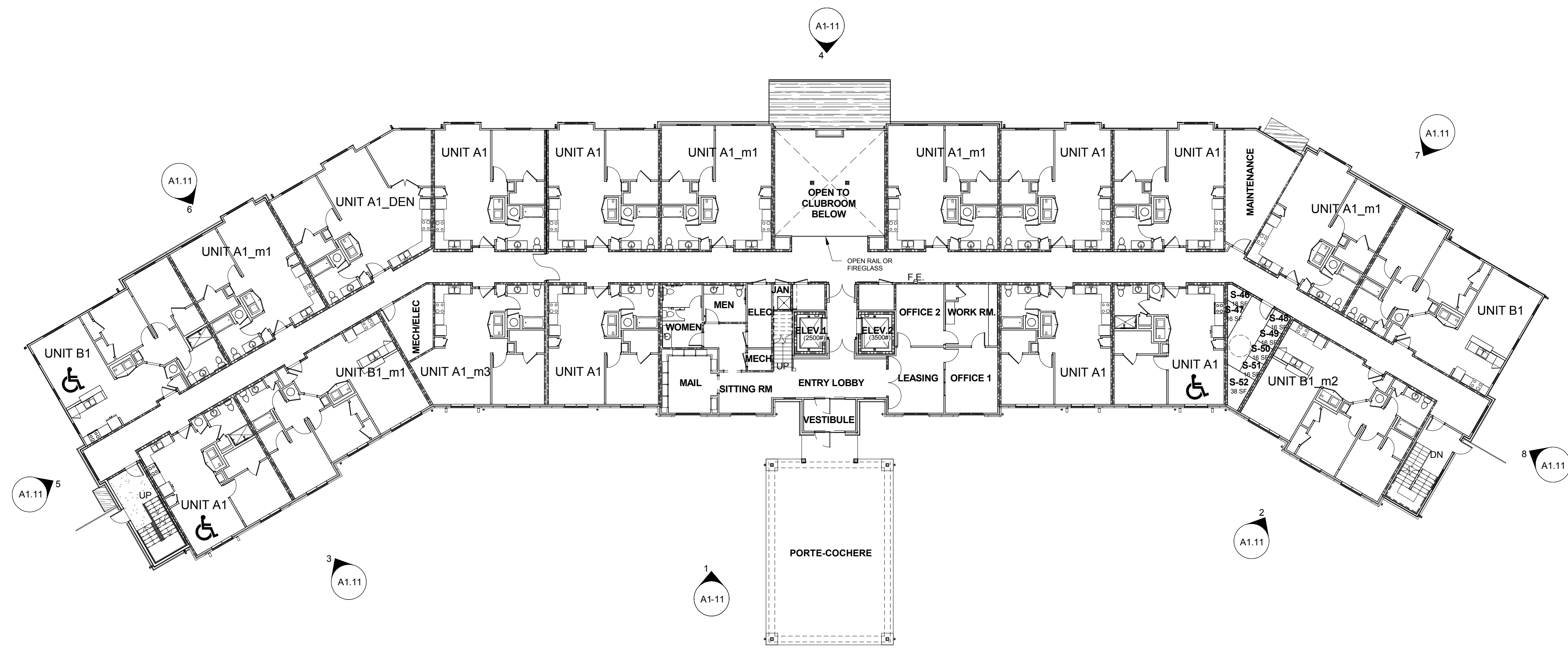
A1.11

2020/07/23 10:41:11 PM C:\Users\Alyson\Desktop\015224 - Greenfield Commons\015224 - Greenfield Commons - 0322 - 017 - 01.dwg

© 2014 CLINE DESIGN ASSOCIATES, P.A. EXPRESSLY RESERVES ITS COMMON LAW COPYRIGHT AND OTHER PROPERTY RIGHTS IN THESE PLANS. THESE PLANS ARE NOT TO BE REPRODUCED, CHANGED OR COPIED IN ANY FORM OR MANNER WHATSOEVER, NOR ARE THEY TO BE ASSIGNED TO ANY THIRD PARTY WITHOUT FIRST OBTAINING THE EXPRESSED WRITTEN PERMISSION AND CONSENT OF CLINE DESIGN ASSOCIATES, P.A.



A1.12 - a valid license will remove this message. See the keywords property for the PDF for more information.



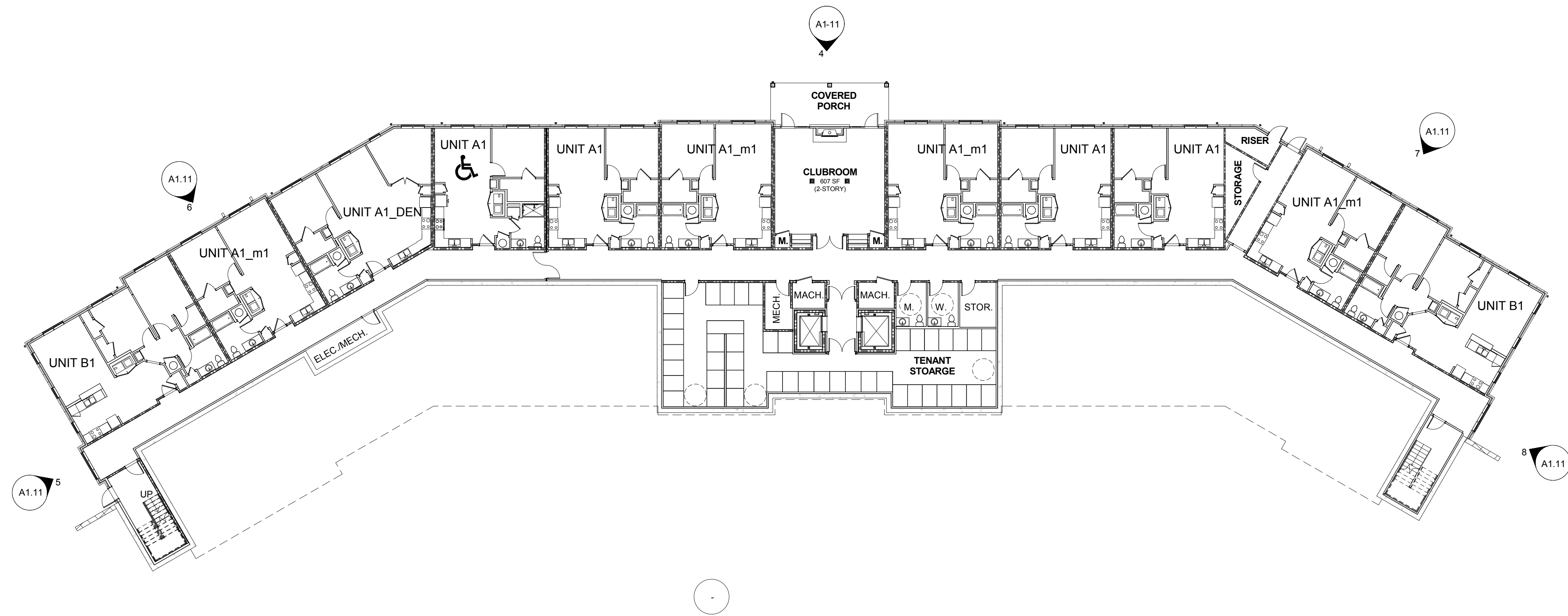
**Greenfield Commons - (3/4 Split)**

Unit Type	Unit Name	Description	Unit HSF <sup>1</sup>	Unit Net SF <sup>2</sup>	# of Units	Unit Totals
1 Bedroom	A1	1 bed/1 bath	872	714	7	55
	A1 Bay	1 bed/1 bath	880	725	17	
	A1_m1	1 bed/1 bath	887	739	10	
	A1_m1 Bay	1 bed/1 bath	705	750	6	
	A1_m2	1 bed/1 bath	728	765	2	
	A1_m3	1 bed/1 bath	712	754	1	
	A1_m3 Bay	1 bed/1 bath	720	765	2	
	A1_Den	1 bed/1 bath/den	915	911	1	
	A1_Den Bay	1 bed/1 bath/den	823	872	3	
	A1 - TYPE A Bay	1 bed/1 bath	860	725	3	
2 Bedroom	B1	2 bed/1 bath	994	1,041	6	14
	B1_m1	2 bed/1 bath	920	977	3	
	B1_m2	2 bed/1 bath	845	901	3	
	B1 - TYPE A	2 bed/1 bath	964	1,041	2	
<b>SF Totals</b>			<b>48,156</b>	<b>50,953</b>	<b>69</b>	

Unit Net SF Total	Building Net SF	Common Space/ Core Net SF
50,953	77,775	26,822

1- Heated SF (HSF) is measured to interior face of GWB to exterior face of GWB and does not include exterior wall SF.  
 2- Net SF includes exterior wall SF of all conditioned (heated/cooled) space.

**FIRST FLOOR BUILDING PLAN** 2  
1/16" = 1'-0"



**BASEMENT FLOOR BUILDING PLAN** 1  
1/16" = 1'-0"



125 N. Harrington St.  
 Raleigh, NC 27603  
 919/836-6413  
 919/836-1280 FAX  
 ClineDesignAssoc.com

DHIC  
**Greenfield Commons**  
 Chapel Hill, North Carolina

NOT FOR CONSTRUCTION

FORM DISTRICT PERMIT APPLICATION

PROJECT: 015224  
 DATE: 03.10.17  
 REVISIONS: DATE

DRAWN BY: Author  
 CHECKED BY: Checker

**BUILDING PLANS**

**A1.12**

C:\Users\kshah\OneDrive\Documents\015224 - Greenfield Commons\015224 - Greenfield Commons\_C022 - 017 - 017.dwg



A1.13 - a valid license will remove this message. See the keywords property of the PDF for more information.



125 N. Harrington St.  
 Raleigh, NC 27603  
 919/836-6413  
 919/836-1280 FAX  
 ClineDesignAssoc.com

DHIC  
**Greenfield Commons**  
 Chapel Hill, North Carolina

NOT FOR  
 CONSTRUCTION

FORM DISTRICT  
 PERMIT  
 APPLICATION

PROJECT: 015224  
 DATE: 03.10.17  
 REVISIONS: DATE

DRAWN BY: Author  
 CHECKED BY: Checker

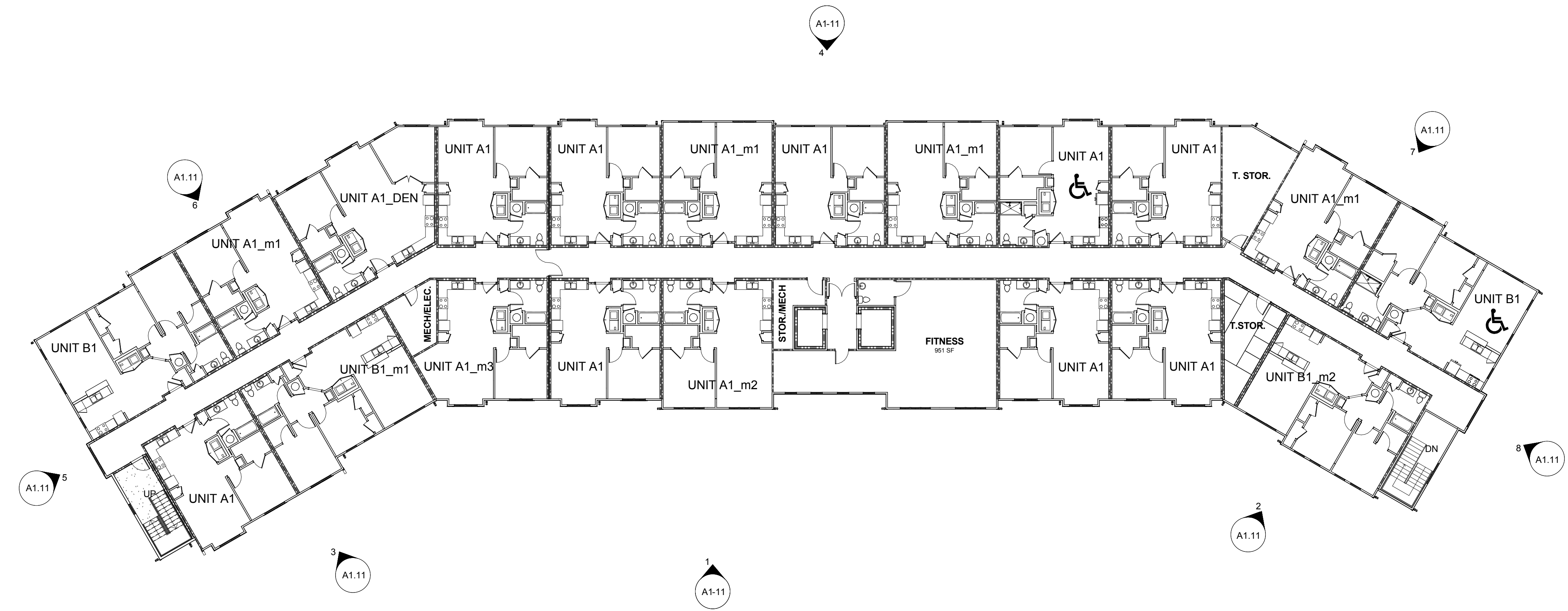
**BUILDING PLANS**

A1.13

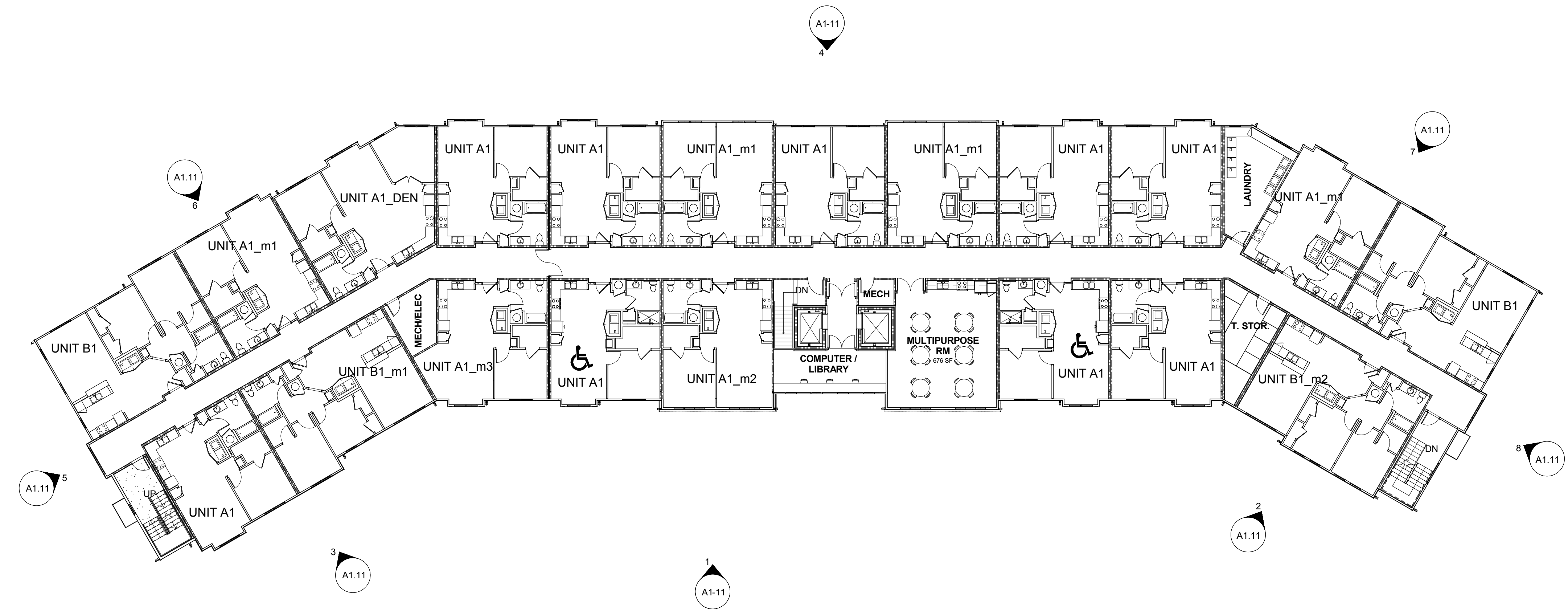
Greenfield Commons - (3/4 Split)						
Unit Type	Unit Name	Description	Unit HSF	Unit Net SF	# of Units	Unit Totals
1 Bedroom	A1	1 bed/1 bath	672	714	7	55
	A1 Bay	1 bed/1 bath	660	725	17	
	A1_m1	1 bed/1 bath	667	739	10	
	A1_m1 Bay	1 bed/1 bath	705	760	6	
	A1_m2	1 bed/1 bath	726	765	2	
	A1_m3	1 bed/1 bath	712	754	1	
	A1_m3 Bay	1 bed/1 bath	720	765	2	
	A1_Den	1 bed/1 bath/den	915	991	1	
	A1_Den Bay	1 bed/1 bath/den	623	672	3	
	A1 - TYPE A Bay	1 bed/1 bath	660	725	3	
2 Bedroom	B1	2 bed/1 bath	894	1,041	6	14
	B1_m1	2 bed/1 bath	820	877	3	
	B1_m2	2 bed/1 bath	845	901	3	
	B1 - TYPE A	2 bed/1 bath	864	1,041	2	
<b>SF Totals</b>			<b>48,156</b>	<b>50,953</b>	<b>69</b>	

Unit Net SF Total	Building Net SF	Common Space/ Core Net SF
50,953	77,775	26,822

1- Heated SF (HSF) is measured to interior face of GWB to exterior face of GWB and does not include exterior wall SF.  
 2- Net SF includes exterior wall SF of all conditioned (heated/cooled) space.



**THIRD FLOOR BUILDING PLAN**  
 1/16" = 1'-0" 2



**SECOND FLOOR BUILDING PLAN**  
 1/16" = 1'-0" 1

C:\Users\Alyson\Desktop\015224 - Greenfield Commons\015224 - Greenfield Commons\_C02 - 217 - 217.dwg, 03/10/17 11:43:17 AM



1375 LED - a valid license will remove the message. See the keywords property of the PDF for more information.

# 1375 LED

## STANDARD SPECIFICATIONS

### FRAME

The injection molded styrene compound is noted for its durability and strength. The frame walls are 0.080" thick, and the color is uniform throughout.

### DIFFUSER

Translucent, UV stabilized white acrylic, injection molded to the shape of its frame. The diffuser is installed in the frame with hardware.

### PAN

Formed aluminum design, finished in a powder coat high reflectance white paint.

### LED PERFORMANCE - 3500K STANDARD

120-277V - 3500K, 82 CRI - L80 rating - 60,000 hrs - L70 rating (projected) - 100,000 hrs  
 Source lumens noted. Amperage rated @ 110V input  
 Operating ambient temperature: -20°C / -4°F - 40°C / 104°F

B6LED - 6W nominal, .05 A input - 711 lm - 119 lm/W  
 B12LED - 12W nominal, .10 A input - 1422 lm - 120 lm/W  
 C9LED - 9W nominal, .10 A input - 1009 lm - 121 lm/W  
 C17LED - 17W nominal, .15 A input - 1829 lm - 111 lm/W  
 C24LED - 24W nominal, .20 A input - 2438 lm - 100 lm/W

### MOUNTING

Directly to j-box (by others). Mounting hardware included.

### FINISH

The 1375 series is available in standard molded nickel tone or bronze. Optional finishes include all Brownlee paints.

### WARRANTY

5 year limited warranty on this LED product. Consult factory for details.

### ORDERING INFORMATION

**1375** - 2. - 3. - 4. (if required)  
 Model

#### 2. FINISH

**STANDARD**  
**NT** Nickel Tone

**OPTIONAL**  
**AG** Antique Gold  
**BL** Black  
**BR** Brick  
**BZ** Bronze  
**DS** Desert Stone  
**GM** Gun Metal  
**MB** Metallic Bronze  
**OL** Oak Leaf  
**PL** Platinum  
**RB** Rustic Bronze  
**RC** Rustic Copper  
**WH** White

**CUSTOM**  
 Provide color sample or RAL code to match

#### 3. WATTAGE

**B6LED** 1-B Series board  
**B12LED** 2-B Series boards

**C9LED** 1-C Series board  
**C17LED** 2-C Series boards  
**C24LED** 2-C Series boards

#### 4. AVAILABLE OPTIONS

**27K** 2700K color temperature  
 B6LED - 634 lm - 106 lm/W  
 B12LED - 1266 lm - 107 lm/W  
 C9LED - 900 lm - 108 lm/W  
 C17LED - 1547 lm - 94 lm/W  
 C24LED - 2062 lm - 84 lm/W

**30K** 3000K color temperature  
 B6LED - 689 lm - 115 lm/W  
 B12LED - 1376 lm - 116 lm/W  
 C9LED - 977 lm - 117 lm/W  
 C17LED - 1763 lm - 107 lm/W  
 C24LED - 2351 lm - 96 lm/W

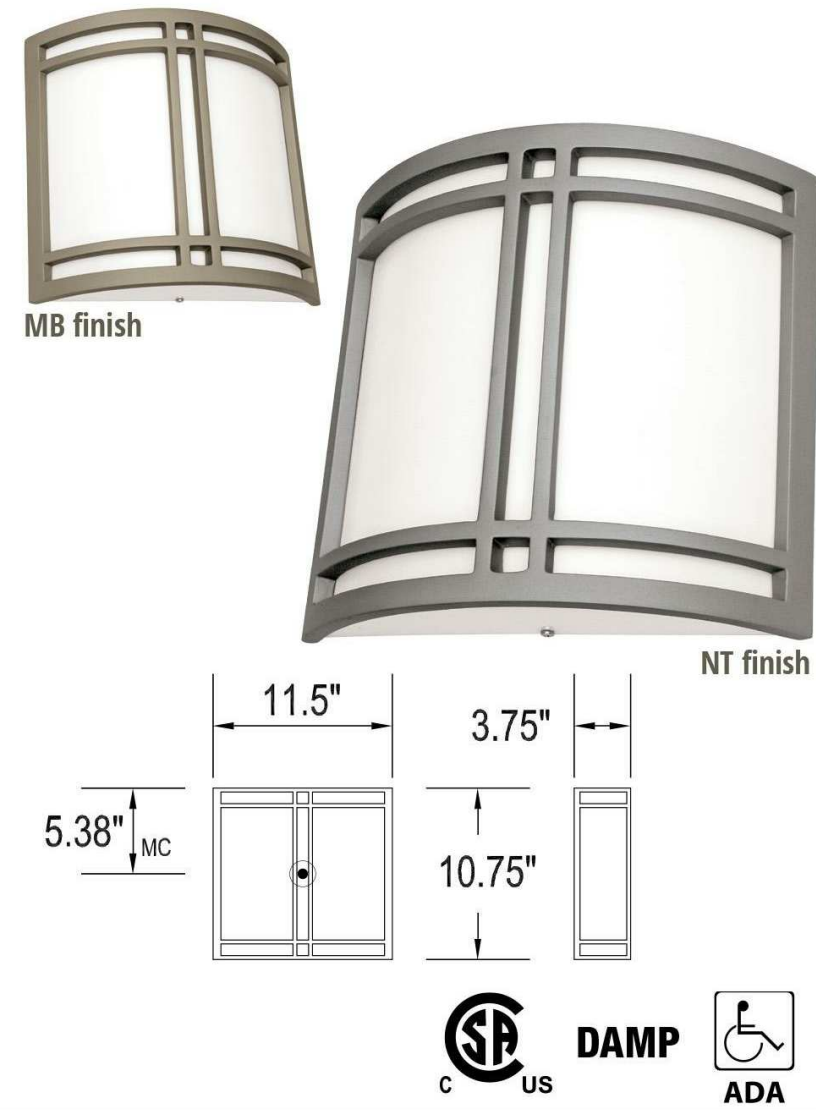
**40K** 4000K color temperature  
 B6LED - 710 lm - 119 lm/W  
 B12LED - 1421 lm - 120 lm/W  
 C9LED - 1010 lm - 121 lm/W  
 C17LED - 1862 lm - 113 lm/W  
 C24LED - 2482 lm - 101 lm/W

**BAC** Buy American Compliant  
**DALI** DALI Compatible (0-10v dimming included)  
 (C17LED & C24LED only)

**DIM** Dimming driver (120-277V)(All except B6LED)  
 (0-10V dimming control required)

**ES** ENERGY STAR® (All except B6LED)

PROJECT: \_\_\_\_\_  
 MODEL #: \_\_\_\_\_  
 FIXTURE TYPE: \_\_\_\_\_



Specifications and dimensions subject to change without notice.  
 Consult your Brownlee Lighting representative for availability and ordering information.



REVISED  
 2/25/15

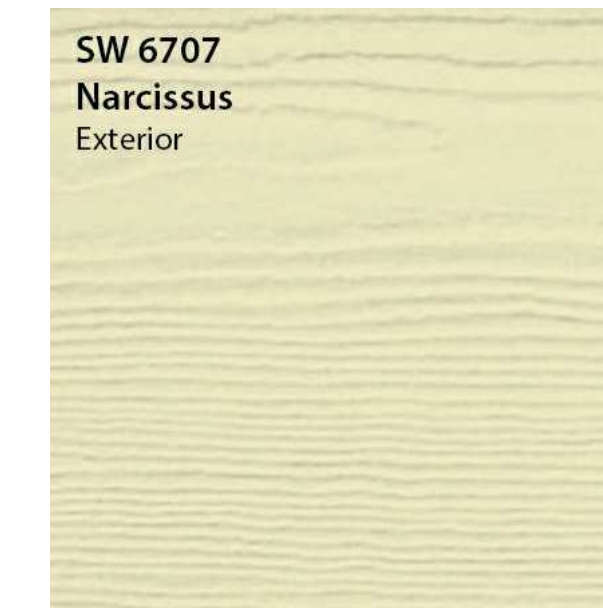
**ROOFING: 30 YR. ASPHALT SHINGLES**  
**COLOR: WEATHERED WOOD**



**FIBER CEMENT SMOOTH TRIM AND PANELS:**



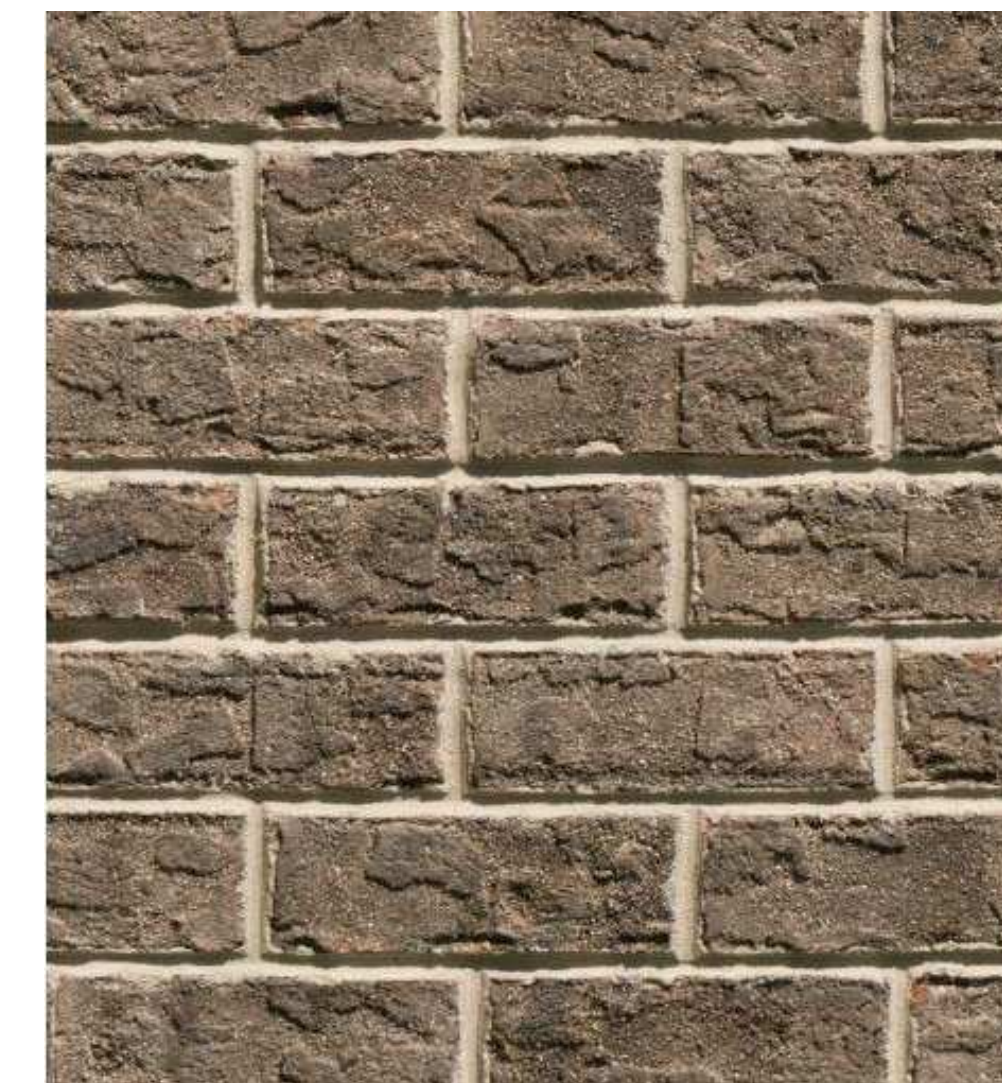
**FIBER CEMENT 'WOODGRAIN' LAP SIDING COLOR 1:**



**FIBER CEMENT 'WOODGRAIN' LAP SIDING COLOR 2:**



**BRICK VENEER**  
**COLOR: CHESAPEAKE GREY**



**WINDOWS: VINYL**  
**COLOR: WHITE**



\*COLORS SHOWN ARE APPROXIMATE AND ARE SUBJECT TO ADJUST FOLLOWING FIELD TESTS.



125 N. Harrington St.  
 Raleigh, NC 27603  
 919/833-6413  
 919/836-1280 FAX  
 ClineDesignAssoc.co  
 m

DHIC  
**Greenfield Commons**  
 Chapel Hill, North Carolina

NOT FOR CONSTRUCTION

FORM DISTRICT PERMIT APPLICATION

PROJECT: 015224  
 DATE: 03.10.17  
 REVISIONS: DATE

DRAWN BY: Author  
 CHECKED BY: Checker

EXTERIOR BUILDING MATERIALS

© 2014 CLINE DESIGN ASSOCIATES, PA. EXPRESSLY RESERVES ITS COMMON LAW COPYRIGHT AND OTHER PROPERTY RIGHTS IN THESE PLANS. THESE PLANS ARE NOT TO BE REPRODUCED, CHANGED OR COPIED IN ANY FORM OR MANNER WHATSOEVER, NOR ARE THEY TO BE ASSIGNED TO ANY THIRD PARTY WITHOUT FIRST OBTAINING THE EXPRESSED WRITTEN PERMISSION AND CONSENT OF CLINE DESIGN ASSOCIATES, PA.