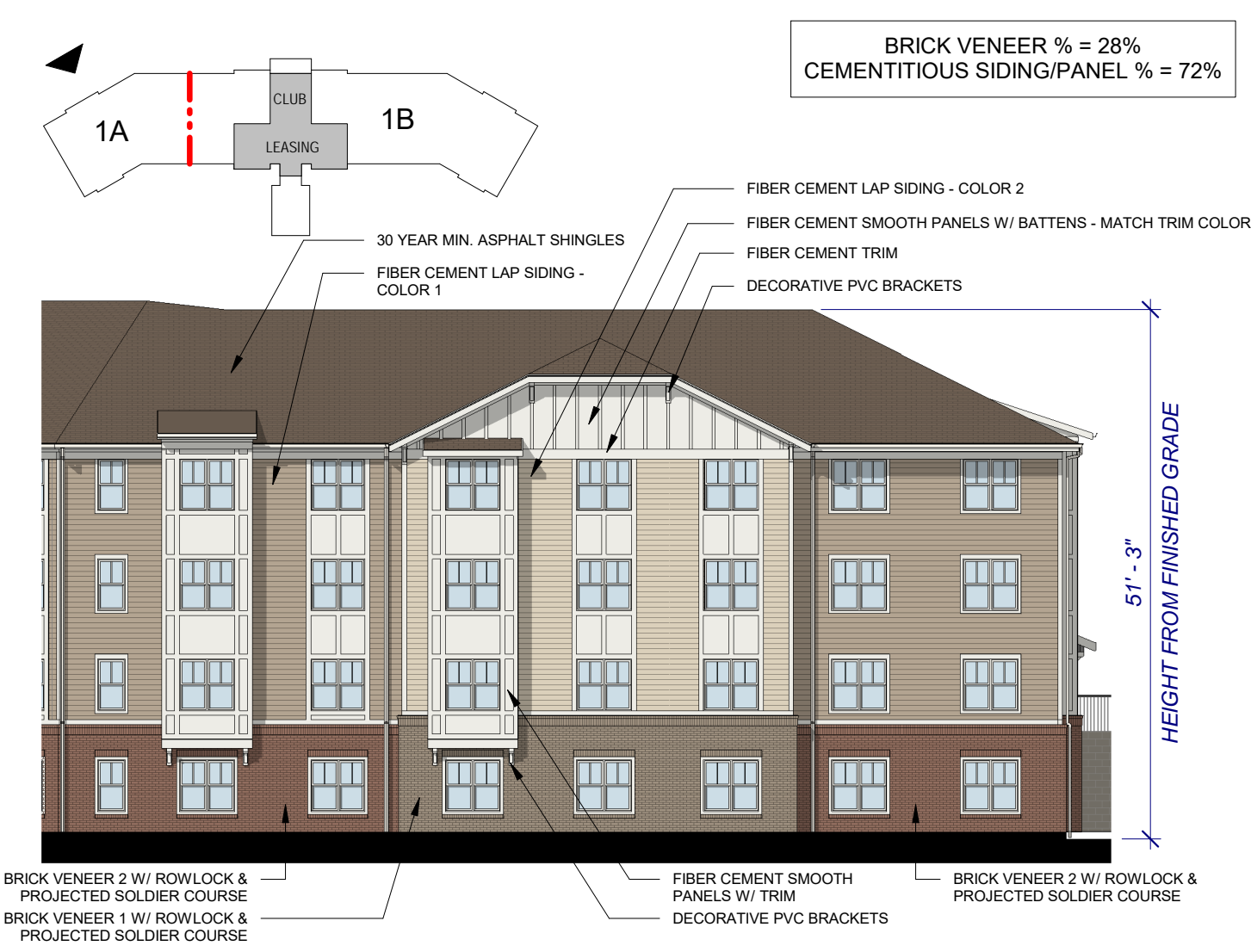
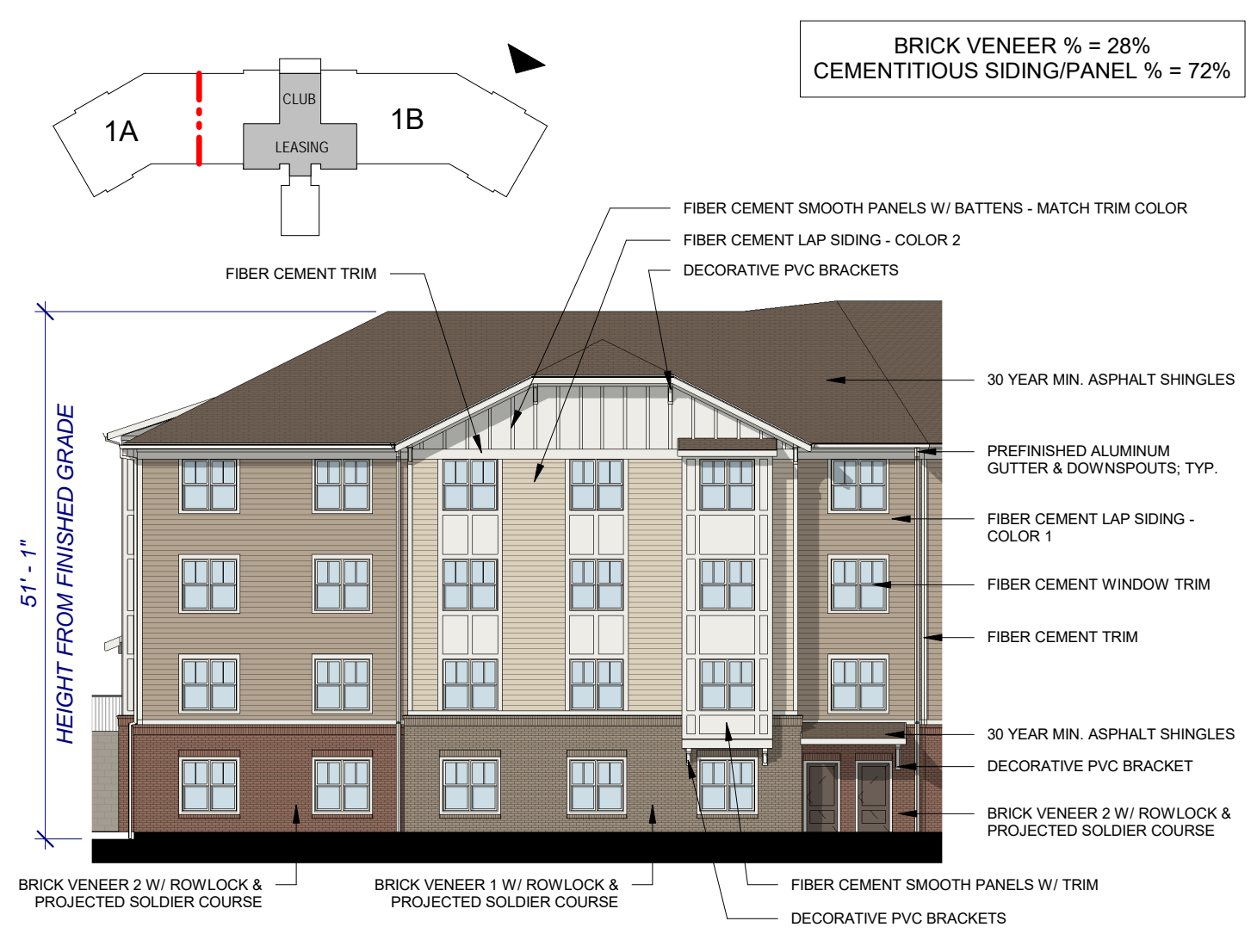


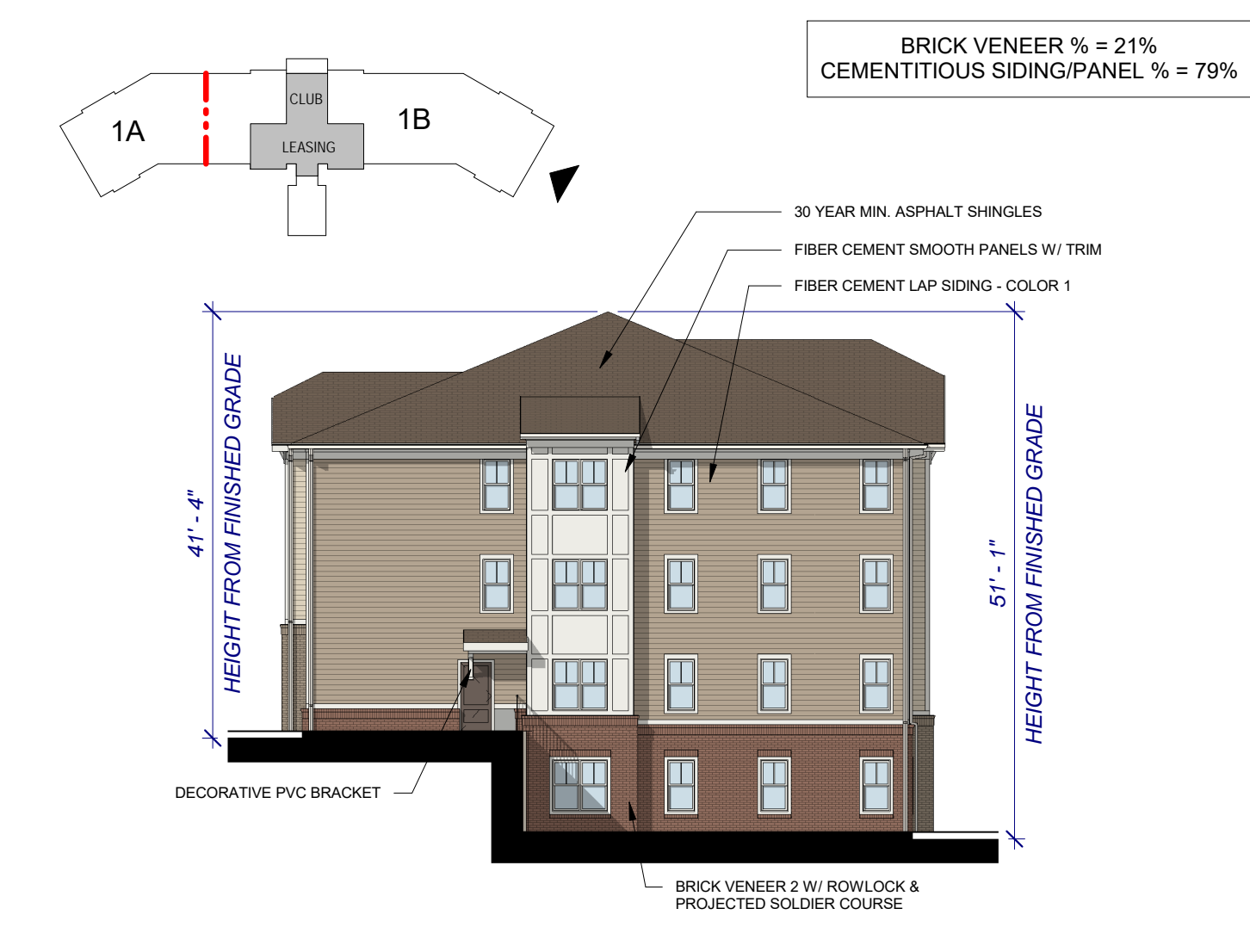
LEFT SIDE ELEVATION 5
1/16" = 1'-0"



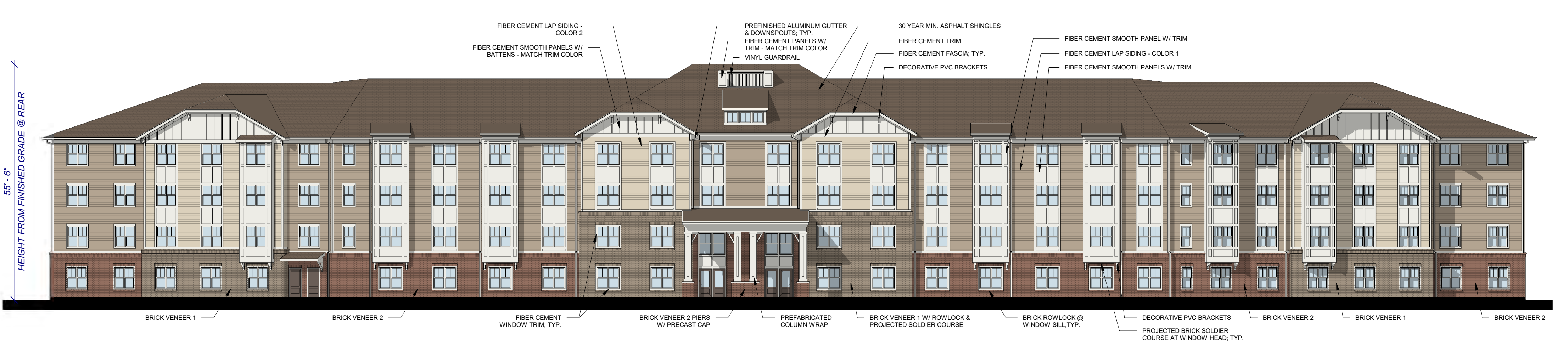
REAR ELEVATION (RIGHT END) 6
1/16" = 1'-0"



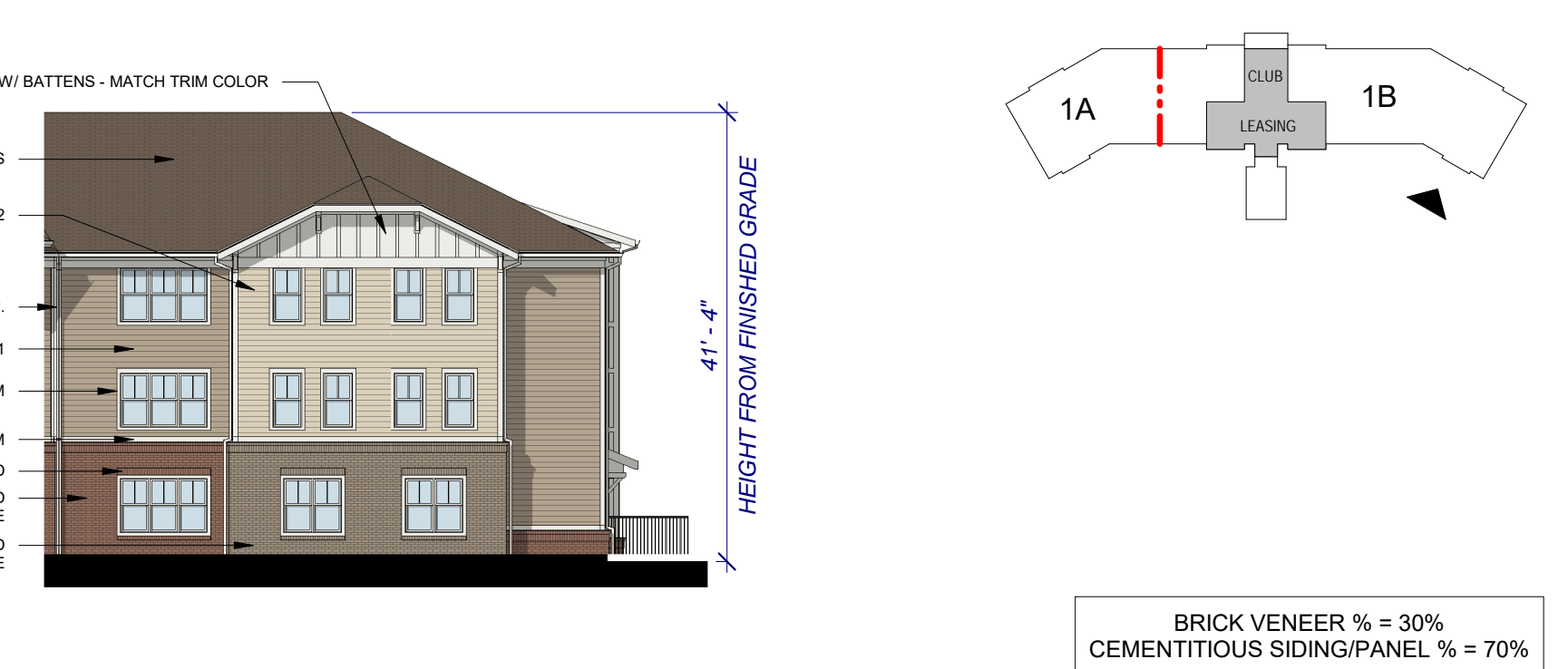
REAR ELEVATION (LEFT END) 7
1/16" = 1'-0"



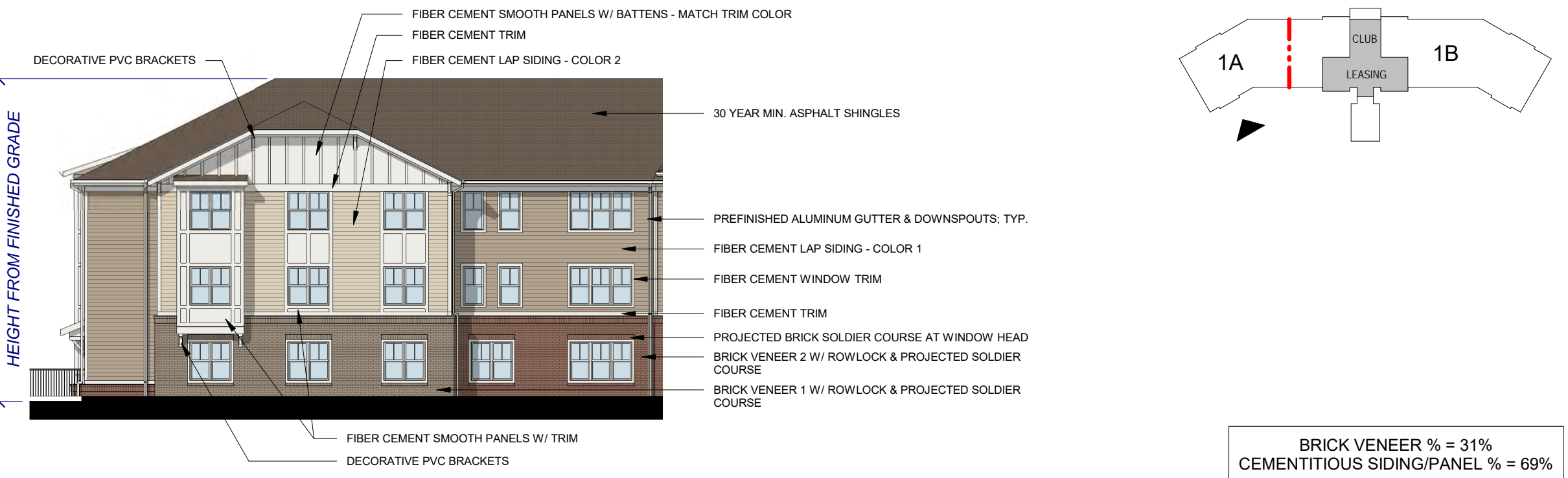
RIGHT SIDE ELEVATION 8
1/16" = 1'-0"



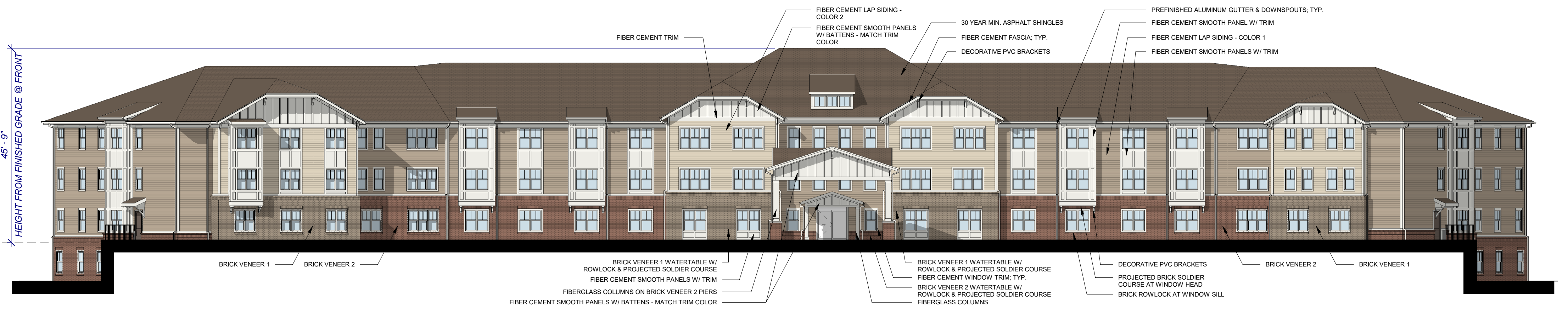
REAR ELEVATION 4
1/16" = 1'-0"



FRONT ELEVATION (RIGHT END) 2
1/16" = 1'-0"



FRONT ELVATION (LEFT END) 3
1/16" = 1'-0"



FRONT ELEVATION 1
1/16" = 1'-0"

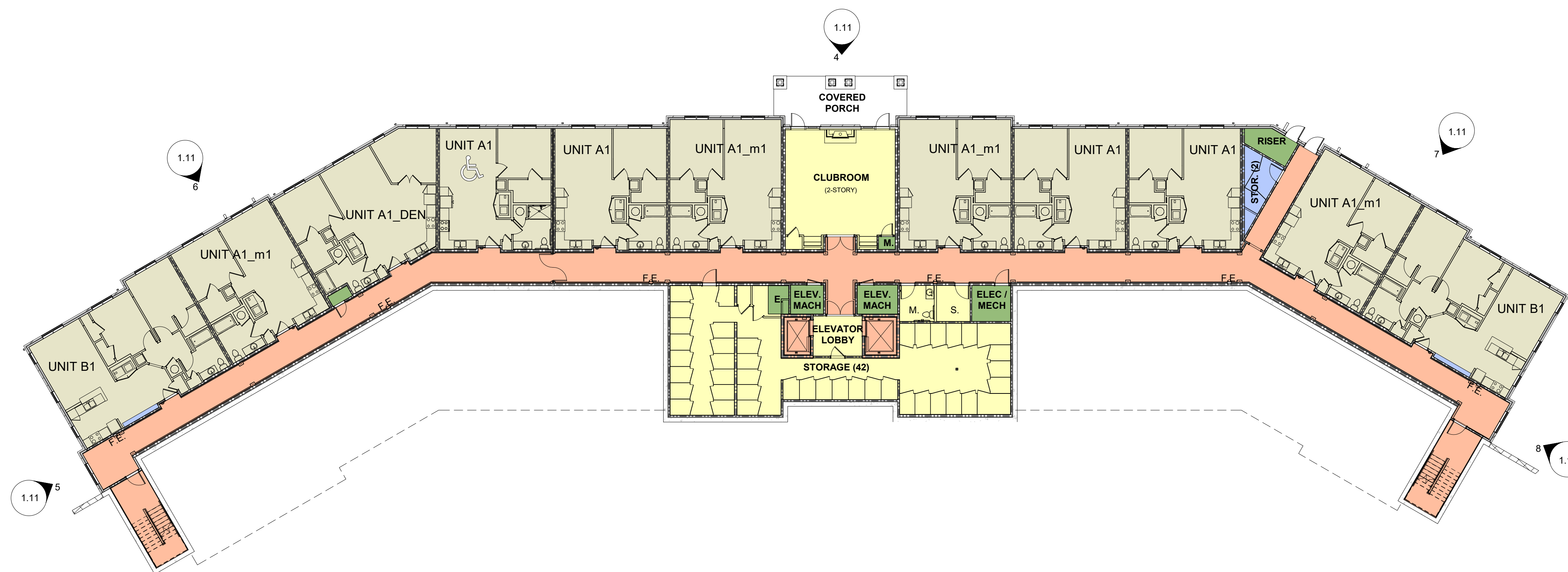
01/13/2019 11:45:05 AM C:\Users\Avalon\Documents\015224 - Greenfield Commons - R13 - CD - REV.2 - 2019.rvt

© 2019 CLINE DESIGN ASSOCIATES, P.A. EXPRESSLY RESERVES ITS COMMON LAW COPYRIGHT AND OTHER PROPERTY RIGHTS IN THESE PLANS. THESE PLANS ARE NOT TO BE REPRODUCED, CHANGED OR COPIED IN ANY FORM OR MANNER WHATSOEVER, NOR ARE THEY TO BE ASSIGNED TO ANY THIRD PARTY WITHOUT FIRST OBTAINING THE EXPRESSED WRITTEN PERMISSION AND CONSENT OF CLINE DESIGN ASSOCIATES, P.A.



- RESIDENTIAL UNITS
- RESIDENTIAL AMENITIES, LEASING, STORAGE, ETC.
- CIRCULATION
- MECHANICAL, ELECTRICAL, MACHINE ROOMS, ETC.
- BIKE STORAGE LOCATIONS

FIRST FLOOR BUILDING PLAN 2
1/16" = 1'-0"



- RESIDENTIAL UNITS
- RESIDENTIAL AMENITIES, LEASING, STORAGE, ETC.
- CIRCULATION
- MECHANICAL, ELECTRICAL, MACHINE ROOMS, ETC.
- BIKE STORAGE LOCATIONS

BASEMENT FLOOR BUILDING PLAN 1
1/16" = 1'-0"

DHIC

CERTIFICATE
OF
APPROPRIATENESS
APPLICATION

PROJECT: 015224
DATE: 05.13.2019
REVISIONS: DATE

DRAWN BY: ART
CHECKED BY: JSL

BUILDING PLANS

05/13/2019 11:00:05 PM C:\Users\jwheeler\Desktop\015224 - Greenfield Commons_R13_C1_REV2.dwg

© 2019 CLINE DESIGN ASSOCIATES, P.A. EXPRESSLY RESERVES ITS COMMON LAW COPYRIGHT AND OTHER PROPERTY RIGHTS IN THESE PLANS. THESE PLANS ARE NOT TO BE REPRODUCED, CHANGED OR COPIED IN ANY FORM OR MANNER WHATSOEVER, NOR ARE THEY TO BE ASSIGNED TO ANY THIRD PARTY WITHOUT FIRST OBTAINING THE EXPRESSED WRITTEN PERMISSION AND CONSENT OF CLINE DESIGN ASSOCIATES, P.A.



THIRD FLOOR BUILDING PLAN 2
1/16" = 1'-0"



SECOND FLOOR BUILDING PLAN 1
1/16" = 1'-0"

DHIC

CERTIFICATE
OF
APPROPRIATENESS
APPLICATION

PROJECT: 015224
DATE: 05.13.2019
REVISIONS: DATE

DRAWN BY: ART
CHECKED BY: JSL

BUILDING PLANS

© 2019 CLINE DESIGN ASSOCIATES, PA. EXPRESSLY RESERVES ITS COMMON LAW COPYRIGHT AND OTHER PROPERTY RIGHTS IN THESE PLANS. THESE PLANS ARE NOT TO BE REPRODUCED, CHANGED OR COPIED IN ANY FORM OR MANNER WHATSOEVER, NOR ARE THEY TO BE ASSIGNED TO ANY THIRD PARTY WITHOUT FIRST OBTAINING THE EXPRESSED WRITTEN PERMISSION AND CONSENT OF CLINE DESIGN ASSOCIATES, PA.



RESIDENTIAL BIKE STORAGE

3

1375 LED

STANDARD SPECIFICATIONS

FRAME
The injection molded styrene compound is noted for its durability and strength. The frame walls are 0.080" thick, and the color is uniform throughout.

DIFFUSER
Translucent, UV stabilized white acrylic, injection molded to the shape of its frame. The diffuser is installed in the frame with hardware.

PAN
Formed aluminum design, finished in a powder coat high reflectance white paint.

LED PERFORMANCE - 3500K STANDARD
120-277V - 3500K, 82 CRI - L80 rating - 60,000 hrs - L70 rating (projected) - 100,000 hrs
Source lumens noted. Amperage rated @ 110V input
Operating ambient temperature: -20°C / -4°F - 40°C / 104°F

B6LED - 6W nominal, .05 A input - 711 lm - 119 lm/W
B12LED - 12W nominal, .10 A input - 1422 lm - 120 lm/W
C9LED - 9W nominal, .10 A input - 1009 lm - 121 lm/W
C17LED - 17W nominal, .15 A input - 1829 lm - 111 lm/W
C24LED - 24W nominal, .20 A input - 2438 lm - 100 lm/W

MOUNTING
Directly to joist (by others). Mounting hardware included.

FINISH
The 1375 series is available in standard molded nickel tone or bronze. Optional finishes include all Brownlee paints.

WARRANTY
5 year limited warranty on this LED product. Consult factory for details.

ORDERING INFORMATION

1375 Model 2, 3, 4 (if required)

2. FINISH

STANDARD
NT Nickel Tone

OPTIONAL

AG Antique Gold
BL Black
BR Brick
BZ Bronze
DS Desert Stone
GM Gun Metal
MB Metallic Bronze
OL Oak Leaf
PL Platinum
RB Rustic Bronze
RC Rustic Copper
WH White

CUSTOM

Provide color sample or RAL code to match

3. WATTAGE

B6LED 1-B Series board
B12LED 2-B Series boards

C9LED 1-C Series board
C17LED 2-C Series boards
C24LED 2-C Series boards

4. AVAILABLE OPTIONS

27K 2700K color temperature
B6LED - 624 lm - 106 lm/W
B12LED - 1266 lm - 107 lm/W
C9LED - 900 lm - 108 lm/W
C17LED - 1547 lm - 94 lm/W
C24LED - 2062 lm - 84 lm/W

30K 3000K color temperature
B6LED - 689 lm - 115 lm/W
B12LED - 1376 lm - 116 lm/W
C9LED - 977 lm - 117 lm/W
C17LED - 1763 lm - 107 lm/W
C24LED - 2351 lm - 96 lm/W

40K 4000K color temperature
B6LED - 710 lm - 119 lm/W
B12LED - 1421 lm - 120 lm/W
C9LED - 1010 lm - 121 lm/W
C17LED - 1862 lm - 113 lm/W
C24LED - 2482 lm - 101 lm/W

BAC Buy American Compliant

DALI DALI Compatible (0-10v dimming included) (C17LED & C24LED only)

DIM Dimming driver (120-277V) (All except B6LED) (0-10V dimming control required)

ES ENERGY STAR® (All except B6LED)

PROJECT: _____
MODEL #: _____
FIXTURE TYPE: _____



REVISED 2015.12.15

Specifications and dimensions subject to change without notice. Consult your Brownlee Lighting representative for availability and ordering information.

EXTERIOR LIGHTING AT RESIDENTIAL BUILDINGS

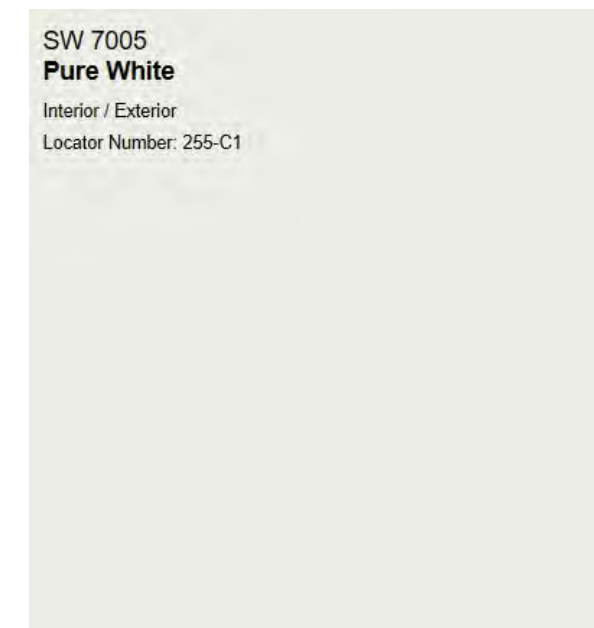
2

ROOFING: 30 YR. ASPHALT SHINGLES
COLOR: WEATHERED WOOD



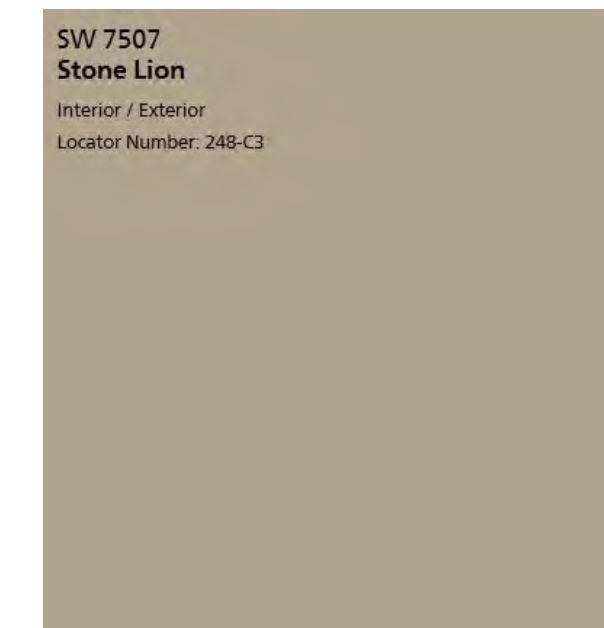
FIBER CEMENT
SMOOTH TRIM
AND PANELS:

SW 7005
Pure White
Interior / Exterior
Locator Number: 255-C1



FIBER CEMENT
LAP SIDING
COLOR 1:

SW 7507
Stone Lion
Interior / Exterior
Locator Number: 248-C3



FIBER CEMENT
LAP SIDING
COLOR 2:

SW 7565
Oyster Bar
Interior / Exterior
Locator Number: 286-C1



BRICK VENEER 1
MANUFACTURER: MERIDIAN BRICK
COLOR: NEW SWAN QUARTER
SIZE: QUEEN



BRICK VENEER 2
MANUFACTURER: TRIANGLE BRICK
COLOR: NORTHAMPTON
SIZE: MODULAR



WINDOWS: VINYL
COLOR: WHITE



*COLORS SHOWN ARE APPROXIMATE AND ARE SUBJECT TO ADJUST FOLLOWING FIELD TESTS.

EXTERIOR COLOR/MATERIAL SAMPLES

1

CLINE
DESIGN

125 N. Harrington St.
Raleigh, NC 27603
919/833-6413
919/836-1280 FAX
ClineDesignAssoc.com

DHIC
Greenfield Commons
Chapel Hill, North Carolina

CERTIFICATE
OF
APPROPRIATENESS
APPLICATION

PROJECT: 015224

DATE: 05.13.2019

REVISIONS: DATE

DRAWN BY: ART

CHECKED BY: JSL

EXTERIOR BUILDING
MATERIALS & BIKE
STORAGE

1.14

Greenfield Commons
Chapel Hill, North Carolina

DHIC

CERTIFICATE
OF
APPROPRIATENESS
APPLICATION

PROJECT: 015224
DATE: 05.13.2019
REVISIONS: DATE

DRAWN BY: ART
CHECKED BY: JSL

**EXTERIOR
PERSPECTIVES**



FRONT ENTRY/PORTE-COCHERE PERSPECTIVE

1



REAR PERSPECTIVE

2

1.15