

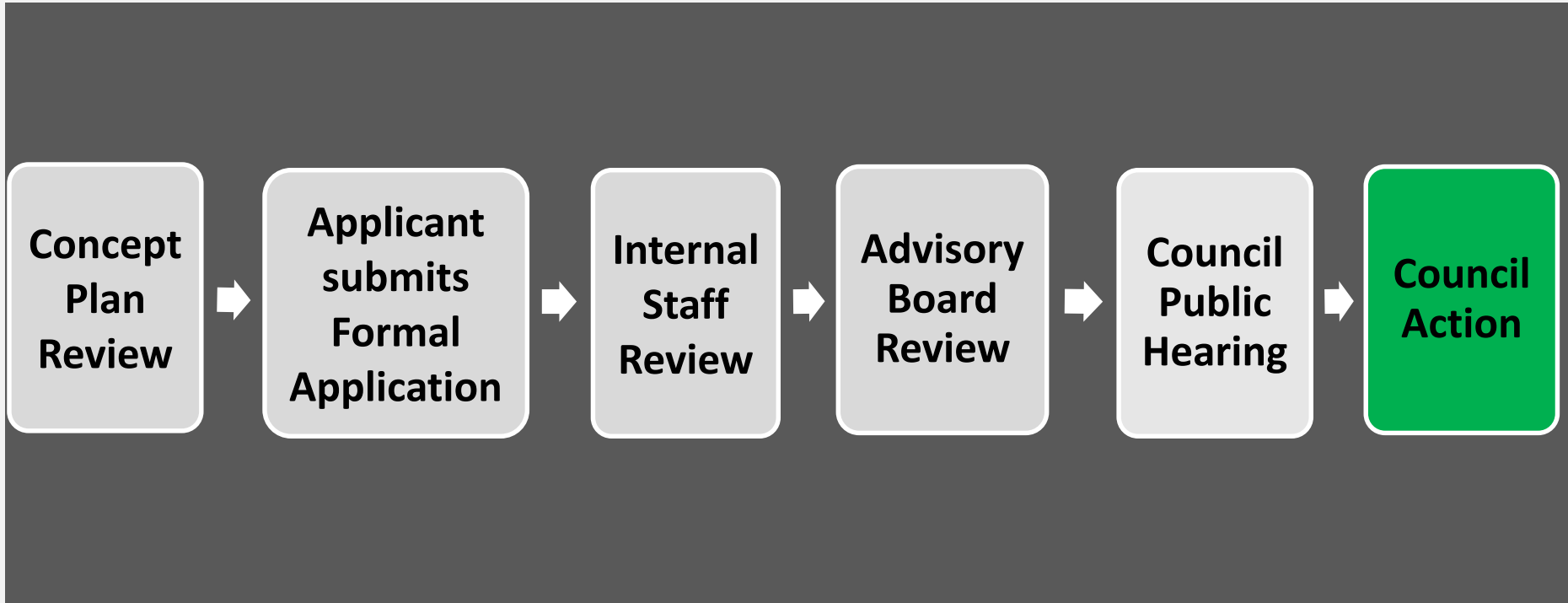


Montessori Community School Expansion

Special Use Permit Modification

**Business Meeting
January 24, 2018**

Where is this in the process?



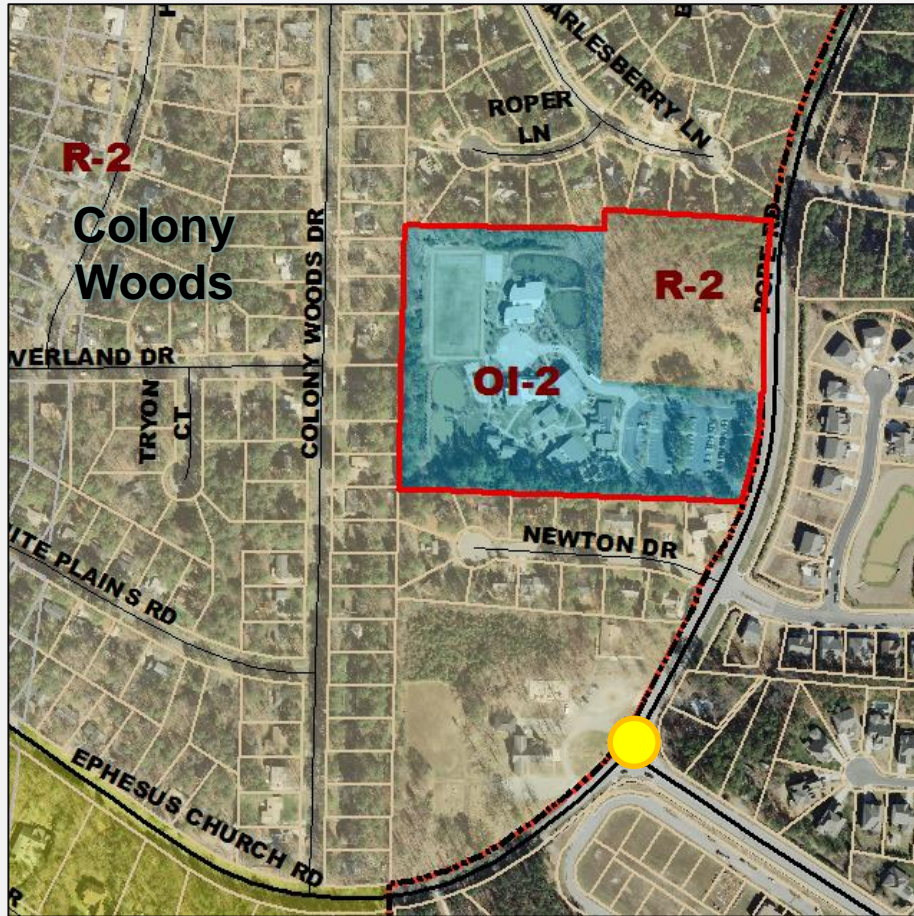
Recommendation - Montessori

That the Council:

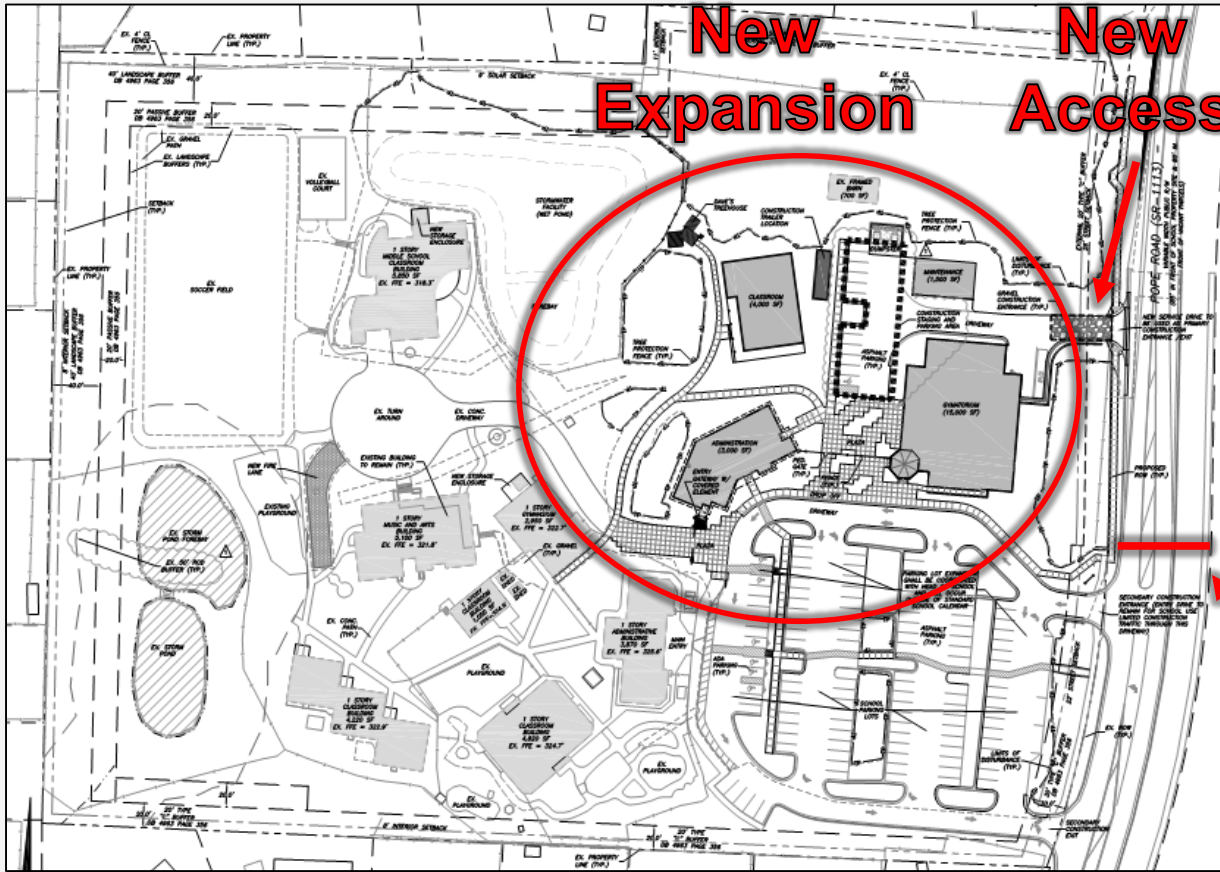
- Close the public hearing from Nov. 15
- Approve the Application



Aerial Map - Montessori



Proposal - Montessori



New Expansion **New Access**

Proposal

- New service drive
- Four new buildings
- Parking increase to 122
- 30 new bicycle parking spaces

Pedestrian Crossing

Modification to Regulations

Modifications:

- 1) Eastern Landscape Buffer to Maintain Existing Buffer
(30' Type D to a 30' and 20' Type C)
- 2) Increase Parking Spaces From 84 to 122.

Revisions

Sidewalk

- Applicant has agreed to construct sidewalk for entirety of Pope Road property frontage.

Lighting

- Applicant will notify nearby residents of lighting plan review.

Recommendation

- Close the Public Hearing
- Approve Resolution 2018-01-24/R-12, approving the Special Use Permit.

