

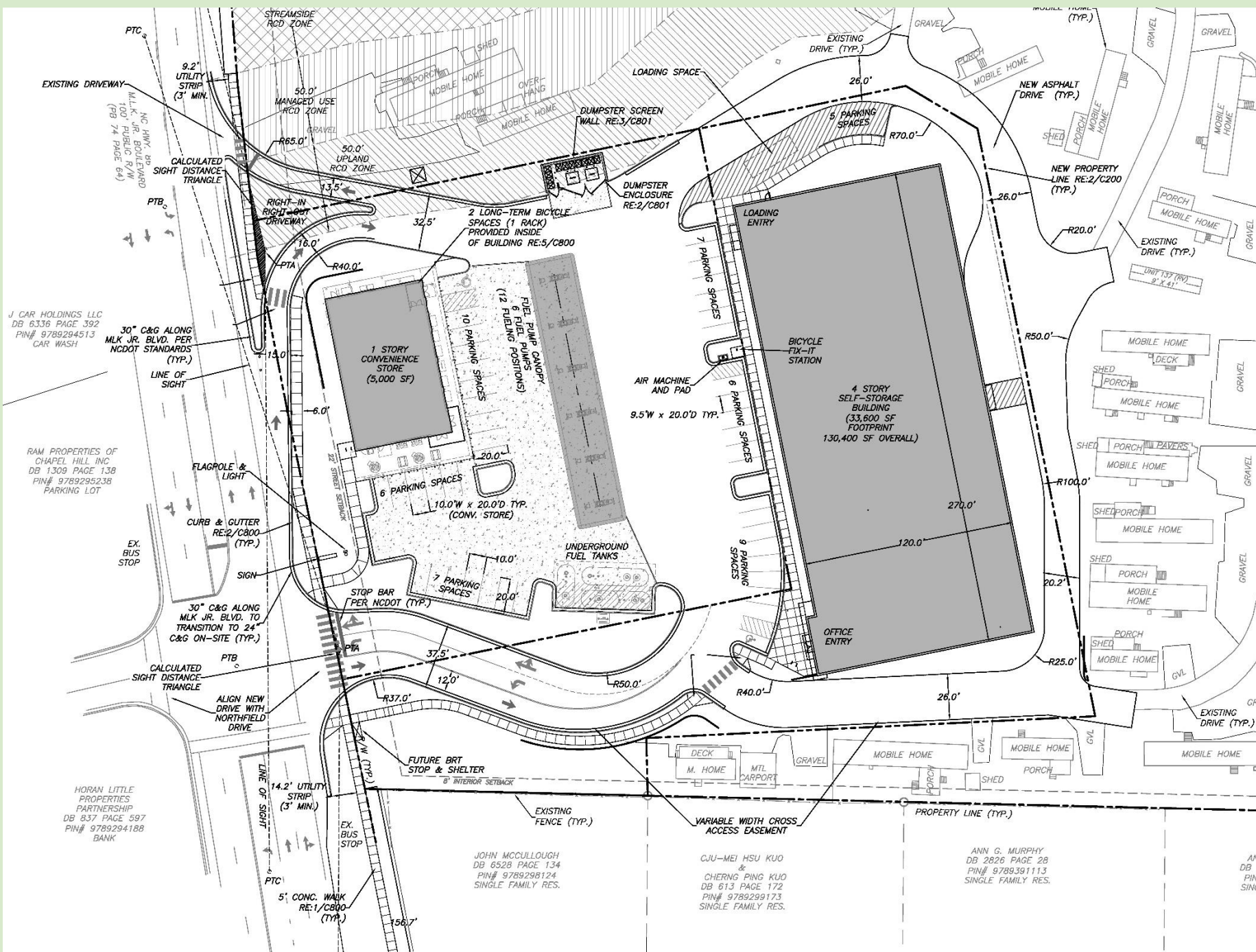
1200 MLK Boulevard

Advisory Board Meeting
(Conditional Zoning)











- **RETAIN/RELOCATE AS MANY HOMES AS POSSIBLE ONSITE**
- **REALIGN DRIVEWAY WITH NORTHFIELD DRIVE AT SIGNAL. REWORKED BOTH DRIVEWAYS**
- **SELF STORAGE BUILDING IS +250' FROM MLK**
- **PRESERVATION OF RCD ZONE**
- **PROPOSED STORMWATER MANAGEMENT**
- **NEW STREETScape WITH TREES AND SIDEWALKS**
- **ROTATED LAYOUT SO THAT PUMPS ARE BEHIND STORE**