

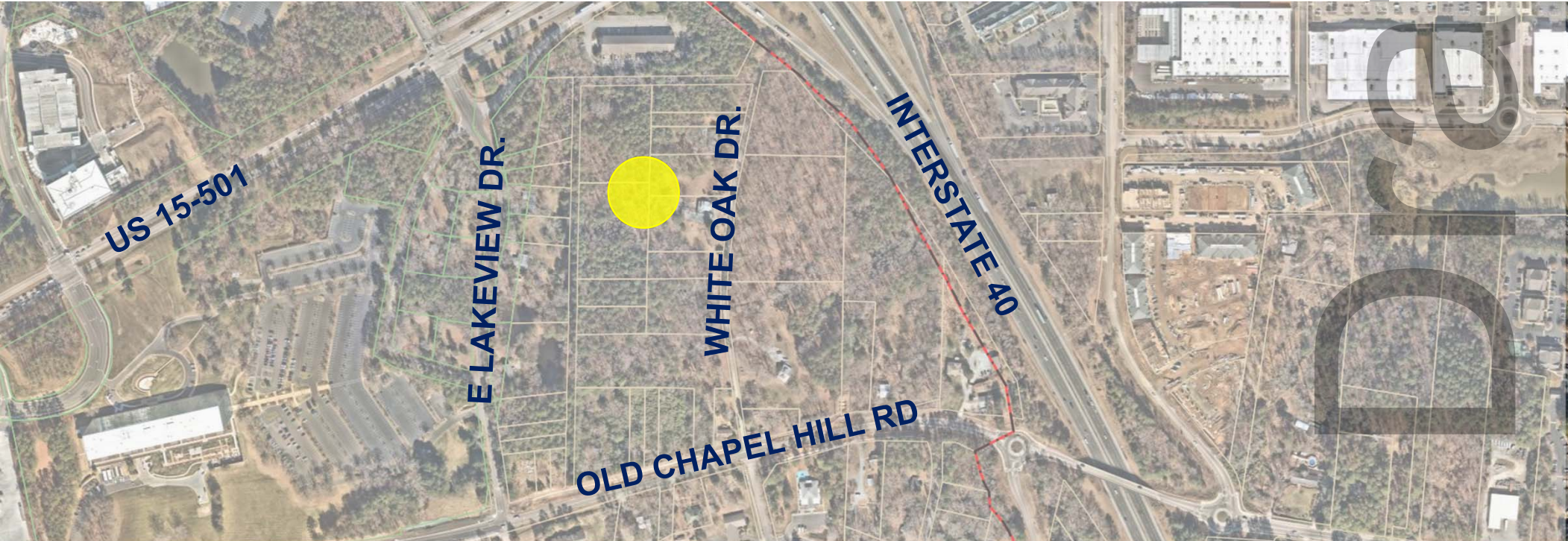


# COUNCIL MEETING

# CONCEPT PLAN

Gateway

September 14, 2022





# Recommendation

- ❑ Adopt a Resolution, transmitting comments to the Applicant regarding the proposed development (*R-#*)





# Concept Plans

- No Decision; Feedback Only
- Applicant provides a rough sketch
- Staff does not conduct a formal review
- Advisory Board preliminary feedback
- Discussion of next steps







# Project Summary

- ❑ Existing Zoning: R-1
- ❑ 380 dwelling units
- ❑ Surface parking
- ❑ 16-acre site





# Advisory Board Comments

---

## Community Design Commission

- Reduce extent of surface parking
- More internal connectivity
- More green space
- Integrate affordable units throughout

## Housing Advisory Board

- Discussion at 9/13 Meeting

## Stormwater Management Utility Advisory Board

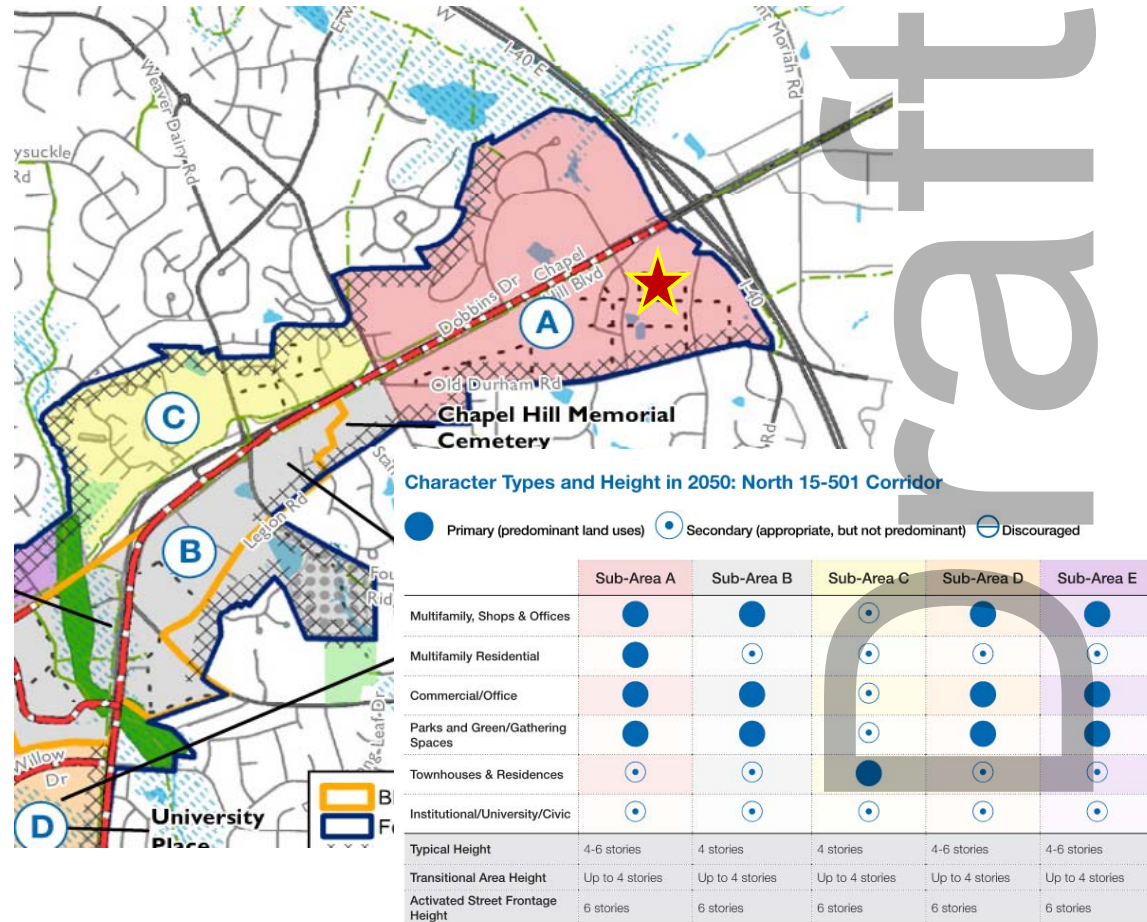
Draft



# Long Range Evaluation

## □ N 15-501 Focus Area

- *Sub Area A*
- *Multifamily residential is a Primary land use*
- *Typical Height 4-6 stories*







# Recommendation

- ❑ Adopt a Resolution, transmitting comments to the Applicant regarding the proposed development (*R-#*)

