

## Residence Inn and Summit Place Townhomes 101-111 Erwin Road. Chapel Hill, NC .





# RECOMMENDATION

- ❑ Recess the public hearing to October 13, 2021







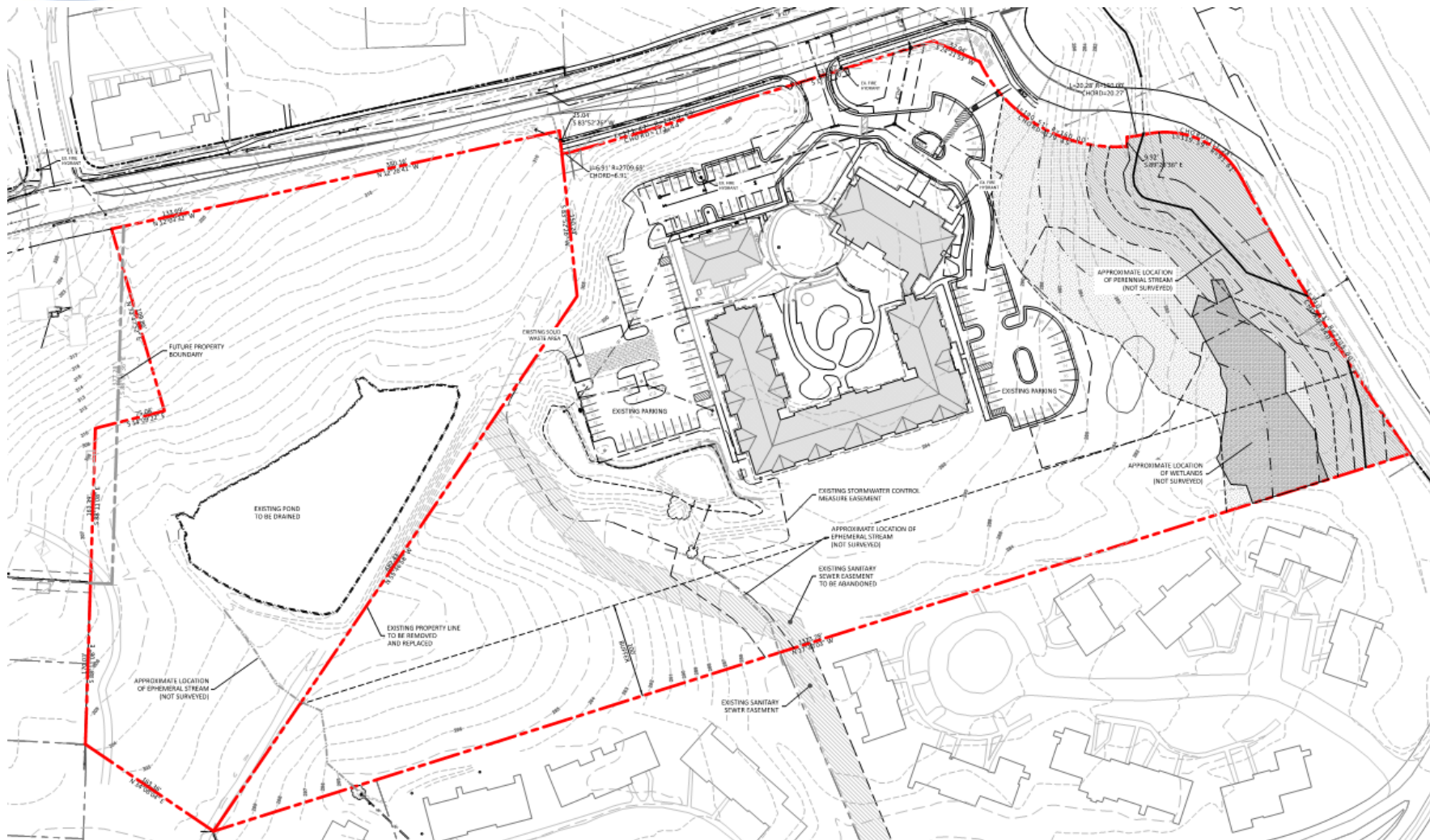
# PROJECT SUMMARY

- ❑ 17.7 acre site
- ❑ Conditional Zoning
- ❑ Currently R-3-CZD and R-2
- ❑ Proposing MU-V-CZD
- ❑ Existing Residence Inn
- ❑ Construct additional 54 hotel rooms and 52 condominiums





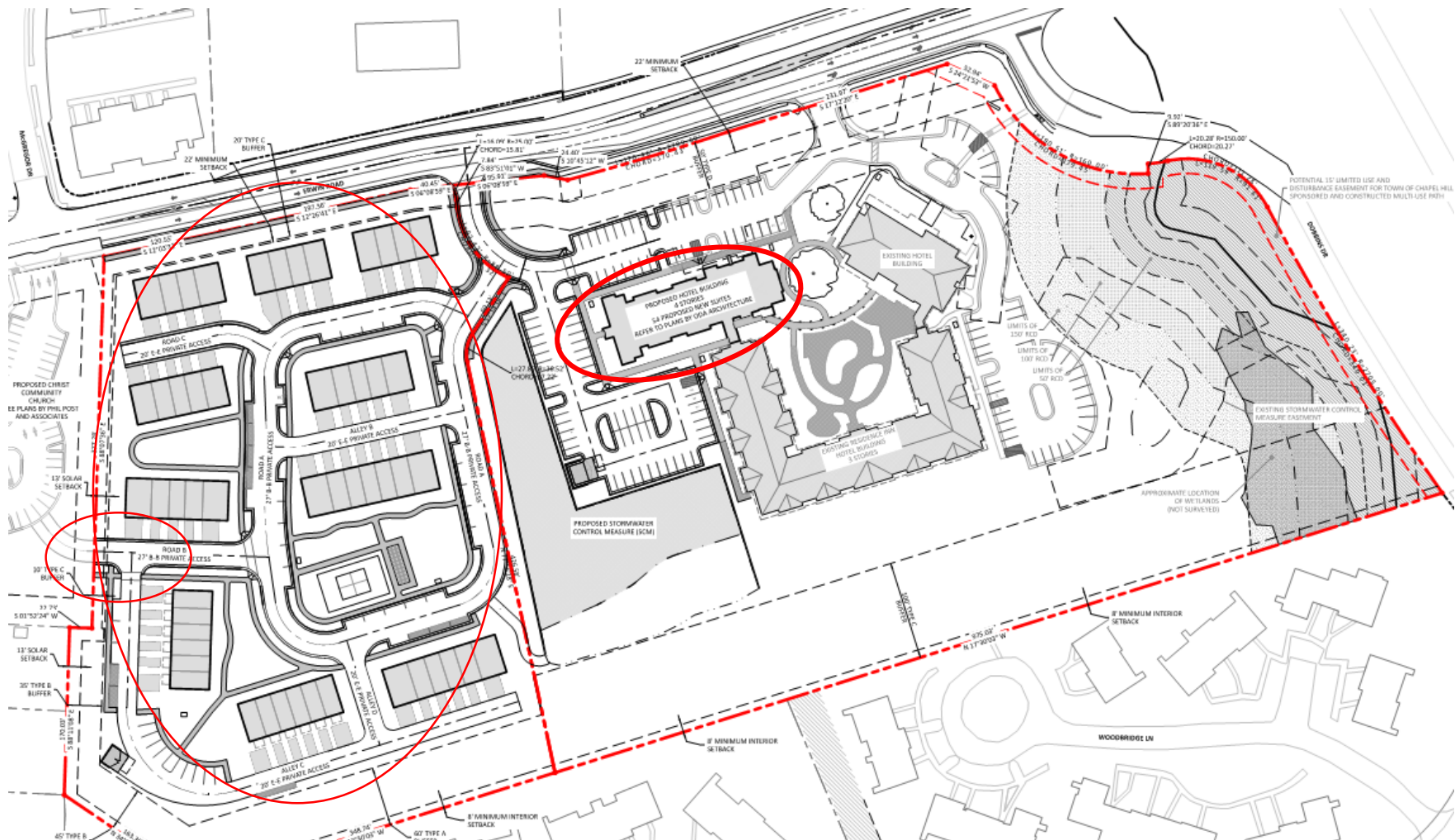
# EXISTING CONDITIONS







# SITE PLAN





# PROPOSED MODIFICATIONS

---

The applicant is requesting modifications to regulations:

- Modify maximum parking spaces from 101 to 117 spaces
- Increased disturbance of steep slopes



# UPDATES SINCE PUBLIC HEARING

---

- Increased buffer between hotel and Summerfield Crossing
- No modification requested for recreation area
- Stormwater device increased in storage capacity
- Tree and topographic survey completed
- Additional reduction in some impacts



# RECOMMENDATION

- ❑ Recess the public hearing to October 13, 2021

