

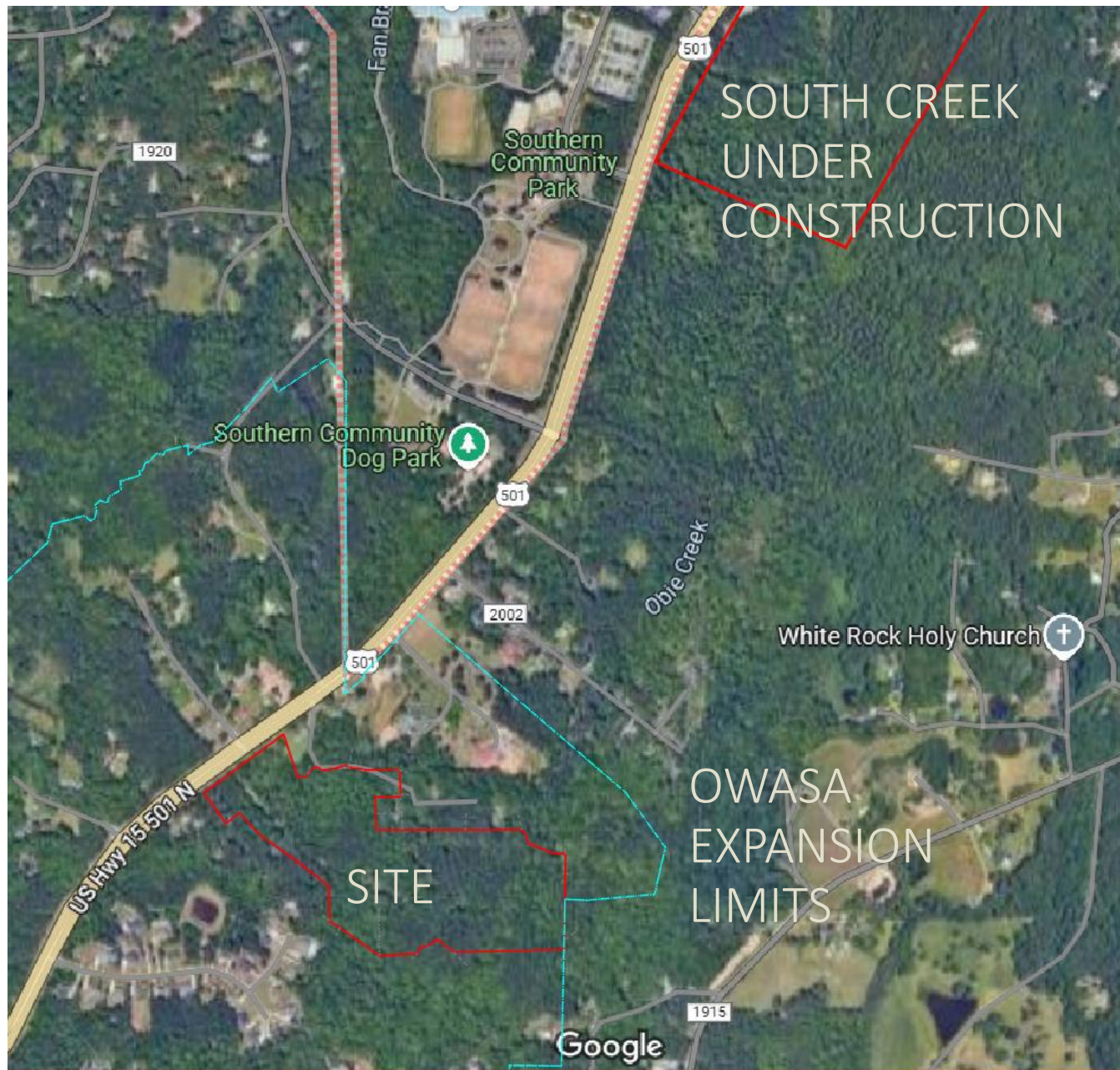
FLINTROCK RESIDENTIAL

Concept Plan

DRAFT

Chapel Hill Town Council
14 January 2025

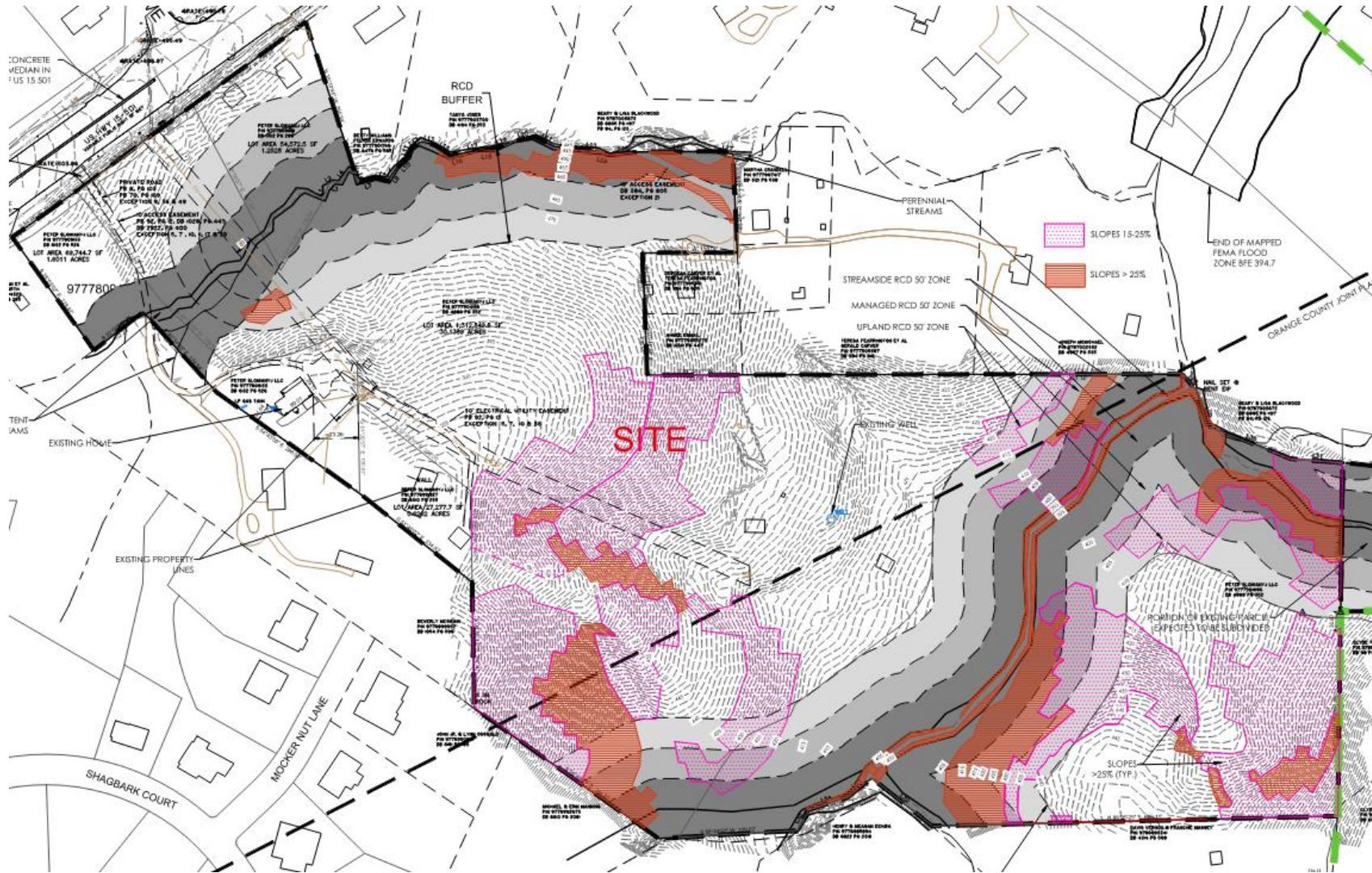




Area Map
Flintrock Residential

DRAFT





Development will be concentrated in the area between the two streams.

Development will cross streams – a single crossing for each stream.

Large areas of slopes 15-25%, and over 25%.

Proposed development in the RCD zones will be for stormwater mitigation, utility extension, and greenway trail.

Use existing break in 15/501 median for the main project vehicular entry.

Existing Conditions Flintrock Residential

- 155 TOWNHOME UNITS
- SMALL NON-RESIDENTIAL ON 15/501 FRONTAGE
- SANITARY SEWER EXTENSION
- GREENWAY TRAIL CONSTRUCTION



DRAFT

Concept Layout Plan
Flintrock Residential

