



# COUNCIL MEETING

ORDINANCE TEXT CHANGES  
5.04.2022







# Overview



## Traffic Code Changes

- Dooring Ordinance
- Town-wide Speed Limit
- Speed Limit Changes to Piney Mountain Road and Legion Road
- School Zones
- Neighborhood Slow Zones



# Dooring Ordinance



- “Dooring”: Opening a door of a motor vehicle onto another road user
- 40 states have dooring laws ([Bike League, 2015](#))
- NC nor Chapel Hill has one
  - Raleigh
  - Washington, D.C.
  - Virginia
- Assists with the incident reporting, citing, and insurance

*Update Traffic Code to include Dooring Ordinance*



Source: Toronto Star



# Speeds Ordinance



- Vision Zero Resolution (2021-10-13/R-2) commits to eliminating traffic fatalities and serious injuries
- Vision Zero is proactive, not reactive
- Higher speeds correspond to worse injuries/fatalities
- 35 MPH crash >50% chance of pedestrian death

When struck by a vehicle travelling at...



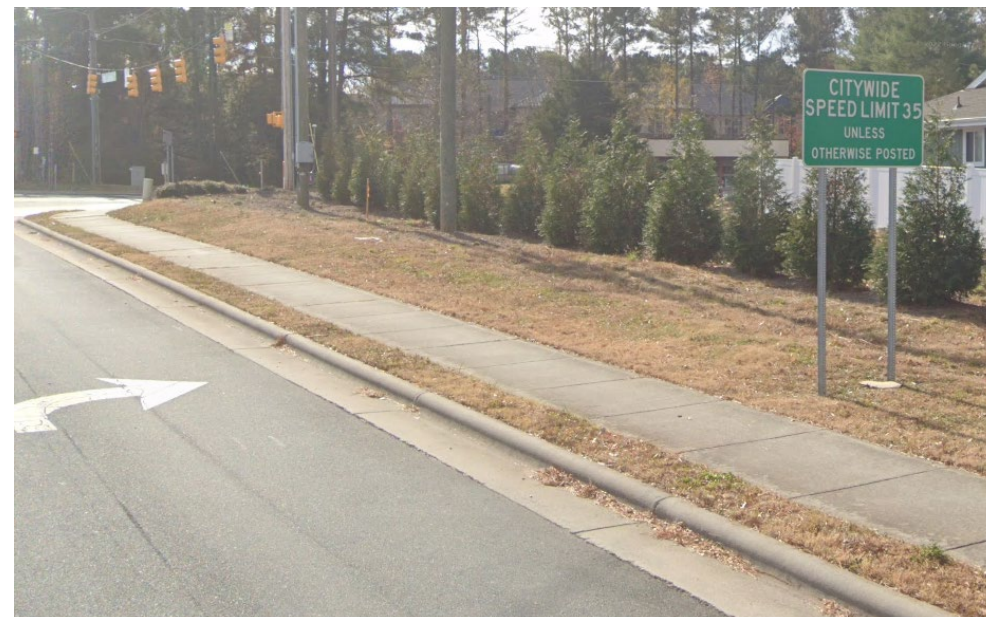


# Speeds Ordinance



## Town-wide Speed Limit

- NC law sets municipal speed limits at 35 MPH
- With two (2) exceptions, Town-owned streets are 25 MPH
- “Citywide speed limit 35” signs on MLK, NC-54, and Old Durham Rd.
- The traffic code outlines the speed limit on every street



Source: Google Maps

*Update Town-wide speed limit, except on state-owned roads, and except as otherwise noted, to 25 MPH*





# Speeds Ordinance



## Lower Speeds Limits on Piney Mountain Rd and Legion Rd

- Two (2) Town-maintained streets that are currently 35 MPH
- Posted speed of a street informs what infrastructure and safety elements can be included or added
- Studies show that sign changes with nothing else **can** still impact average driver speeds



Source: Google Maps

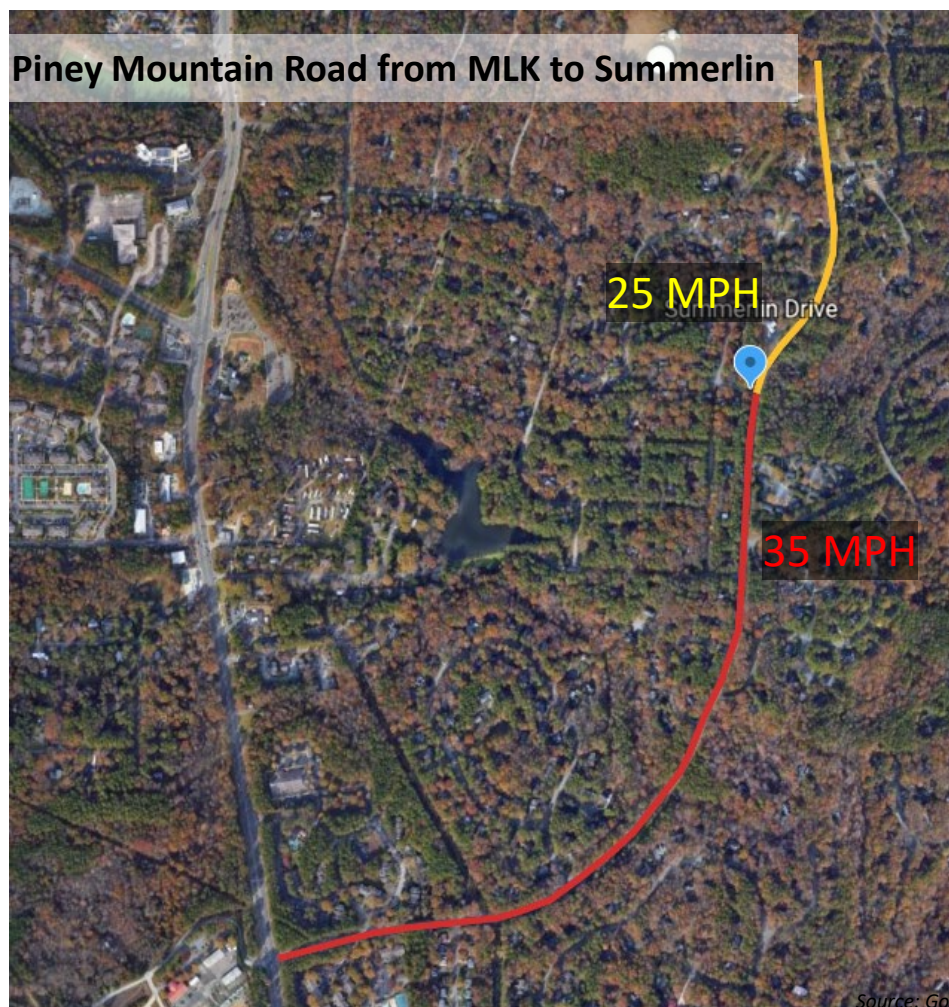




# Speeds Ordinance



**Change speed limit from 35 MPH to 25 MPH on Piney Mountain Rd and Legion Rd.**



Source: Google Maps





# Speeds Ordinance



## School Zones

- NC law sets school zone speed limits at 25 MPH on state-owned roads
- NC law restricts school zone speed limits to 20MPH on any road
- Many Chapel Hill schools are not currently written into code for school zone
  - Rashkis
  - Glenwood
  - Northside
  - Scroggs

*Update School Zone code to include all CHCCS schools in Chapel Hill corporate limits.*



Source: Google Maps



## Neighborhood Slow Zone

- “Specifically designated areas with slower speeds than otherwise similar streets in the same jurisdiction”. ” ([NACTO](#))
- “Neighborhood-scale or site-specific zones are useful for addressing high priority areas” ([NACTO](#))
- Instead of responding to complaints and installing traffic calming one block at a time, Neighborhood Slow Zones Program applies **community-driven traffic calming** in an entire zone of residential streets.

*Authorize Town Manager to establish Neighborhood Slow Zones as a traffic calming method.*



THE GATEWAY OF A NEIGHBORHOOD SLOW ZONE IN THE CLAREMONT SECTION OF THE BRONX.

Source: patch.com



# Commission and Advisory Board Feedback



## Engagement and Education

- Transportation and Connectivity Advisory Board (TCAB) and Planning Commission both stressed the importance of education and engagement efforts in coordination with the Text Amendments, specifically with regard to the Dooring Ordinance and the Neighborhood Slow Zones

## Data-Informed Decision-making

- Vision Zero decisions (like Neighborhood Slow Zone implementation) is a combination of data-driven decisions and community-centered planning

## Dooring

- TCAB and Planning Commission stressed the importance of determining the appropriate offense for Dooring. CHPD and Planning have worked closely on this





# RECOMMENDATION

---

- Enact the Code of Ordinances amendments related to:
  - Town-wide speed limit
  - Piney Mountain Road and Legion Road speed changes
  - Dooring
  - School zone
  - Neighborhood Slow Zone authorization