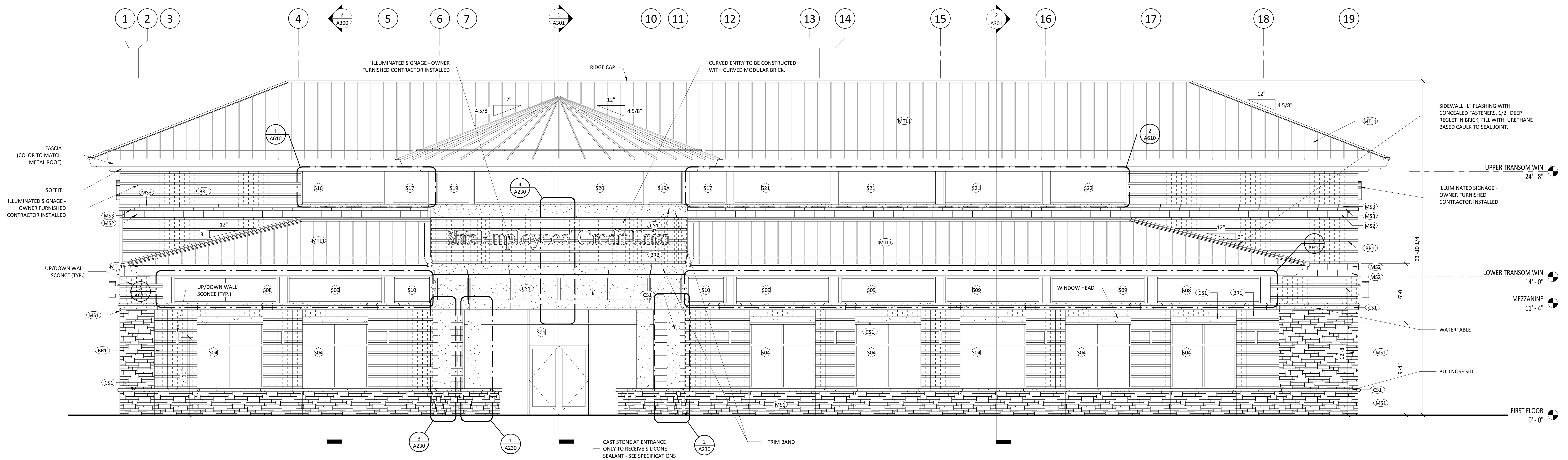
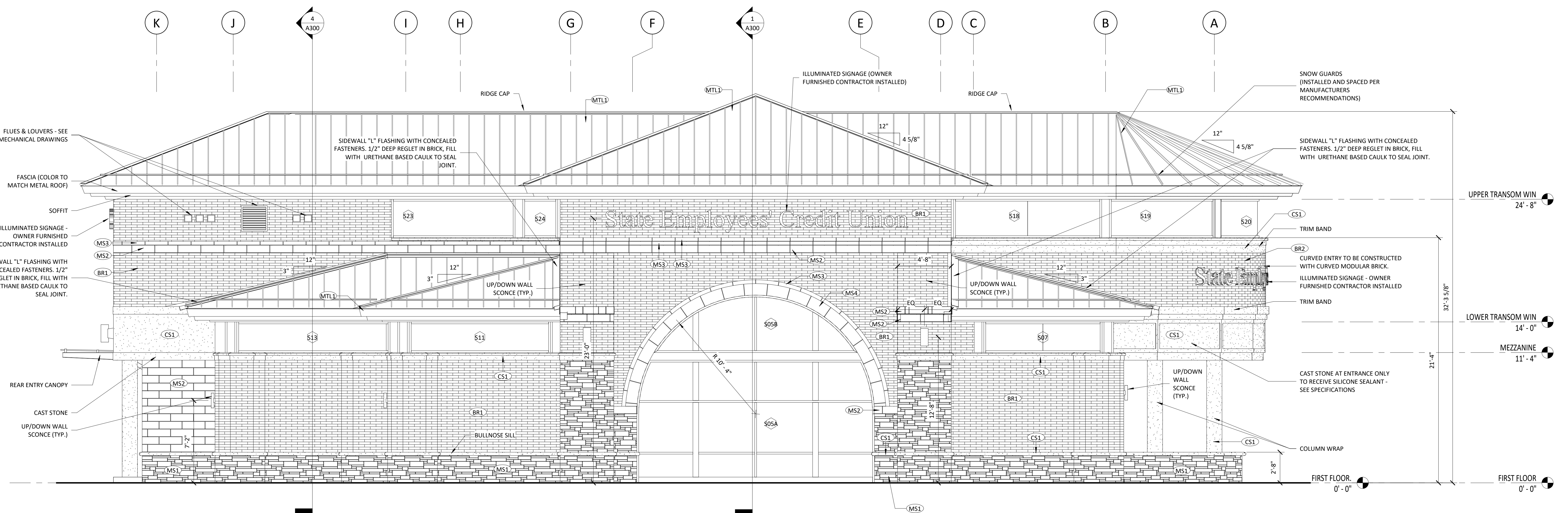


| EXTERIOR FINISH SCHEDULE |                          |            |                 |            |   |
|--------------------------|--------------------------|------------|-----------------|------------|---|
| KEY                      | MATERIAL                 | MNFR.      | ID              | FINISH     | COMMENTS                                |
| BR1                      | BRICK                    | LEE        | #608            | BEAUFORT   | NORMAN SIZE                             |
| BR2                      | BRICK                    | LEE        | #608            | BEAUFORT   | CURVED MODULAR SIZE                     |
| CS1                      | CAST STONE               | ARRISCRAFT | ARRISCRAFT      | CAFE       |   |
| MS1                      | FULL WIDTH MASONRY STONE | ARRISCRAFT | SHADOW STONE    | JASPER     |   |
| MS2                      | FULL WIDTH MASONRY STONE | ARRISCRAFT | 8" RENAISSANCE  | CAFE       |   |
| MS3                      | FULL WIDTH MASONRY STONE | ARRISCRAFT | 4" RENAISSANCE  | CAFE       |   |
| MS4                      | FULL WIDTH MASONRY STONE | ARRISCRAFT | 12" RENAISSANCE | CAFE       |   |
| MTL1                     | STANDING SEAM METAL ROOF | SEE SPEC'S | SEE SPEC'S      | SEE SPEC'S | CUSTOM COLOR MATCH TO IMETCO'S CHARCOAL |

- GENERAL NOTES**
- ALL TRIM AND FLASHING TO MATCH ADJACENT SURFACE (UNO).
  - REFER TO SHEETS A220 FOR EXPANSION JOISTS LAYOUTS.
  - EXTERIOR SEALANT AT ALL PENETRATIONS TO MAINTAIN WATER TIGHT SEAL.



**1 FRONT ELEVATION**  
1/4" = 1'-0"



**2 LEFT ELEVATION**  
1/4" = 1'-0"

| NO. | DATE       | BY  | REVISIONS         |
|-----|------------|-----|-------------------|
| 1   | 03/22/2019 | MSC | ISSUED FOR PERMIT |