

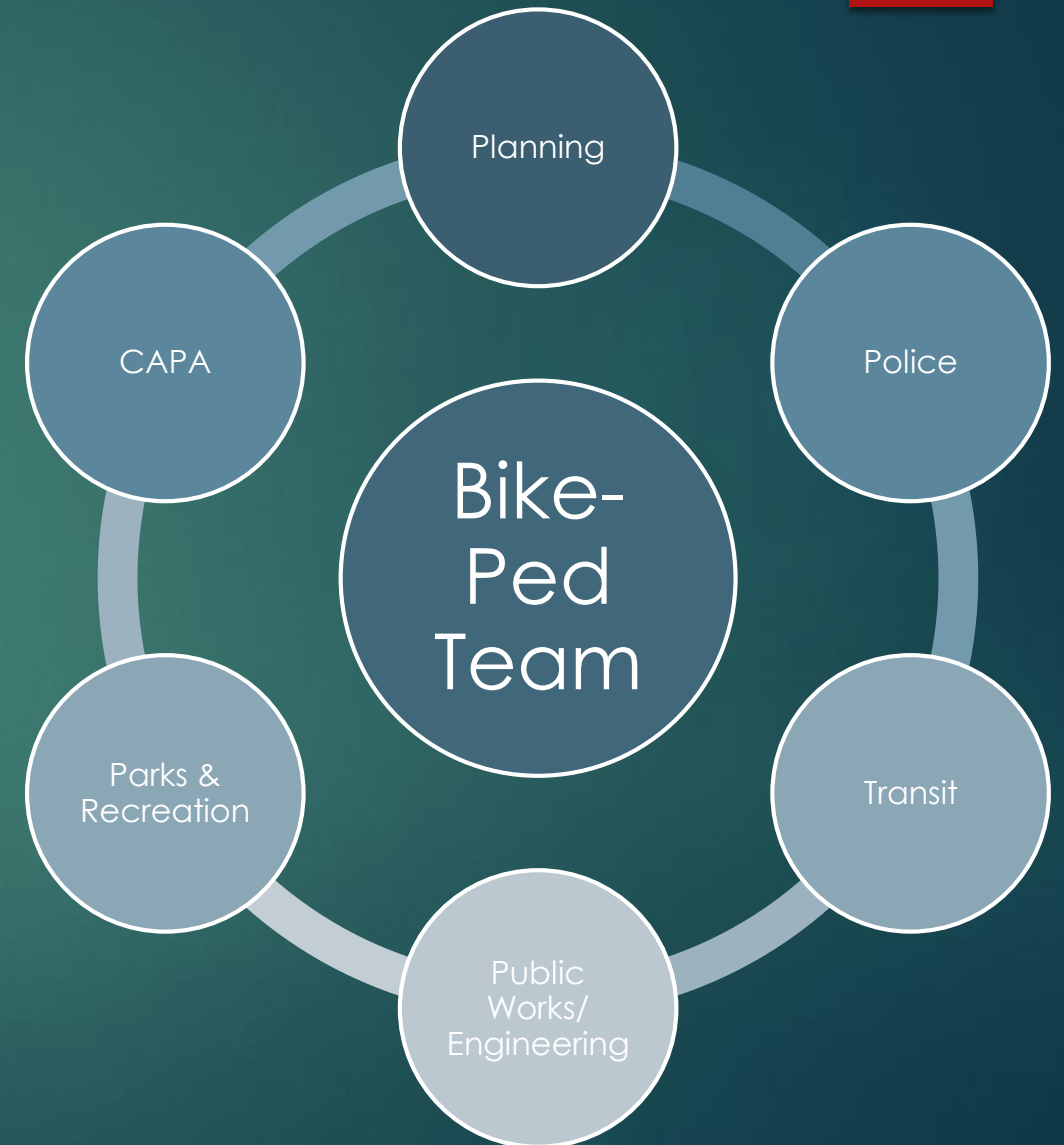
Connected Communities

Town of Chapel Hill

**COUNCIL BUDGET
WORK SESSION
MAY 30, 2018**



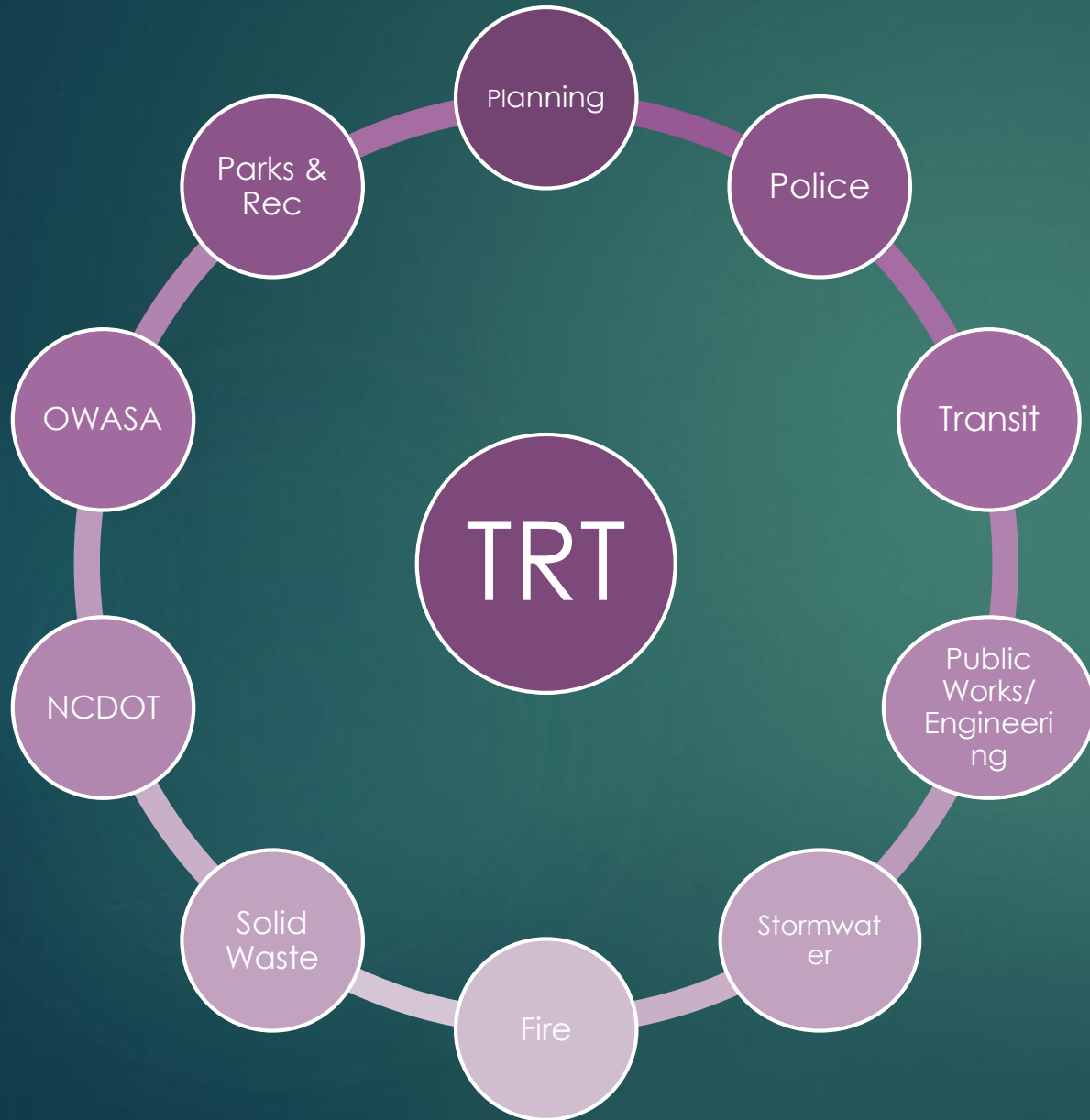
Bike-Ped Team



Roads Team



Technical Review Team



Key Priorities



Chapel Hill Downtown 2020 Work Plan

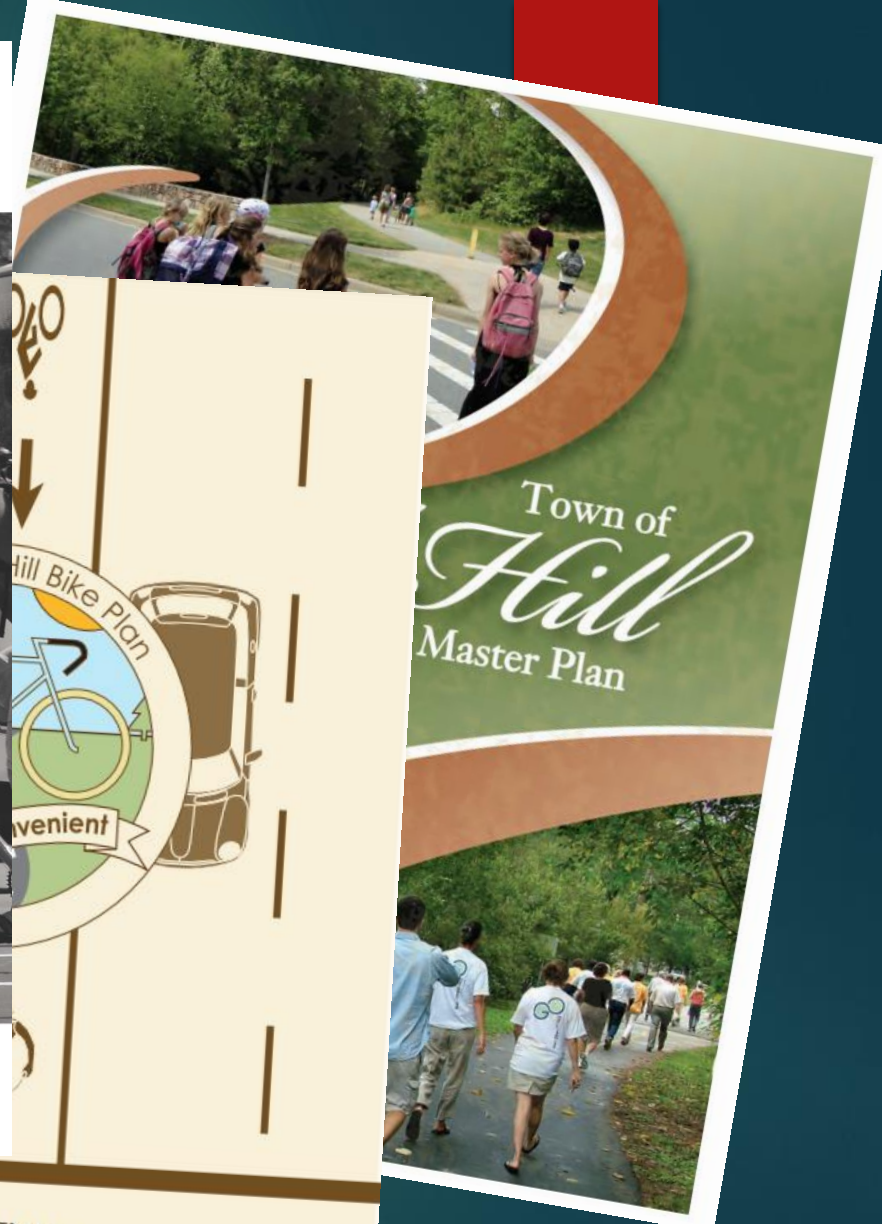
The Downtown 2020 Work Plan transforms ideas into action starting in FY 17 and working toward FY 20.

		Phase One (FY 17)	Phase Two
Development Patterns 	Harmonize new buildings with the old, so that mid-rises do not tower over houses. Encourage a greater variety of housing and mixed-use courtyard development with room for start-ups.	<ul style="list-style-type: none"> Create additional guidelines and regulations for Rosemary Street regarding commercial development and land use that are consistent with the vision statement of the Northside Neighborhood Conservation District. 	<ul style="list-style-type: none"> Work to develop to develop continuing housing campus protection surrounding development. Create that address standard development.
Access 	Improve access for the physically and visually-impaired, parking, way-finding, biking, pedestrian crossings, through-block connections, and traffic flow past Columbia Street.	<ul style="list-style-type: none"> Conduct a holistic study of downtown parking and circulation that informs decision making about street infrastructure. Identify alternative models for parking management and metering. Increase lighting on alleyways. 	<ul style="list-style-type: none"> Restriping and circulation. Construction of crossing infrastructure. Consideration from City.
Variety 	A trip downtown should involve surprise and delight—the exploration and discovery of new places and the sound and motion of public performance.	<ul style="list-style-type: none"> Increase exploration on informal and formal pathways with creative pedestrian level wayfinding signage. Recruit artistic programming and small events to increase vibrancy and year round activity. 	<ul style="list-style-type: none"> Consistent programming increases.
Public Realm 	Create active public gathering spaces and make the sidewalks a better place to sit and socialize.	<ul style="list-style-type: none"> Research, test and evaluate ideas for activating public realm and green space (ITS Plaza, 140 West, and others). Reduce regulatory barriers to sidewalk dining and support façade improvements that activate and beautify the street. 	<ul style="list-style-type: none"> Evaluate and remove excess hardware from sitting areas between street and sidewalk. Consider removal of regulatory barriers to small business and entrepreneurial start-up activity.
Economic Development 	Chapel Hill is the home of choice for innovators, start-ups and entrepreneurs.	<ul style="list-style-type: none"> Identify co-working and Stage II space for companies. Increase the economics of downtown through strategic drivers. 	<ul style="list-style-type: none"> Identify co-working and Stage II space for companies. Increase the economics of downtown through strategic drivers.

TOWN OF CHAPEL HILL MOBILITY AND CONNECTIVITY PLAN



OCTOBER 2017



Plan Vision
Chapel Hill is a community where biking is a safe and convenient everyday choice.



Goals

GOAL: CONNECTED COMMUNITY

To create a highly connected community where bicycling, walking, and transit are convenient, everyday choices for our neighborhoods, businesses, and public spaces.

Strategic Objectives

1. Improve neighborhood parking and traffic issues

FY 19 Actions

- Management of current and expanded parking inventory
- Install and activate Smart City parking technology
- Complete necessary Wallace Deck repairs
- Create Downtown Ambassador Program

2. Expand and link walking, bicycling, and shared use networks, and enhance connections to public transit

FY 19 Actions

- Mobility and Connectivity street and sidewalk infrastructure improvements

3. Foster local and regional transit options that are comfortable, affordable, and efficient for people of all ages and abilities to get around

FY 19 Actions

- Maintain current Chapel Hill Transit services

4. Develop a public transit model that is financially sustainable, in the near-term and long term

FY 19 Actions

- Chapel Hill Transit bus replacement program: 5 demand response vehicles and 3 fixed route buses
- Chapel Hill Transit Service Development Plan
- Chapel Hill Transit Memorandum of Understanding

CONNECTED COMMUNITY FY19 Q1 PROGRESS REPORT

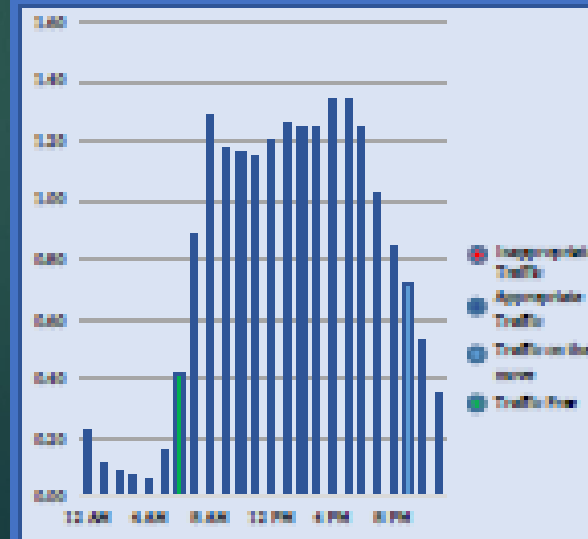
OUR GOAL

To create a highly connected community where bicycling, walking, and transit are convenient, everyday choices for our neighborhoods, businesses, and public spaces.

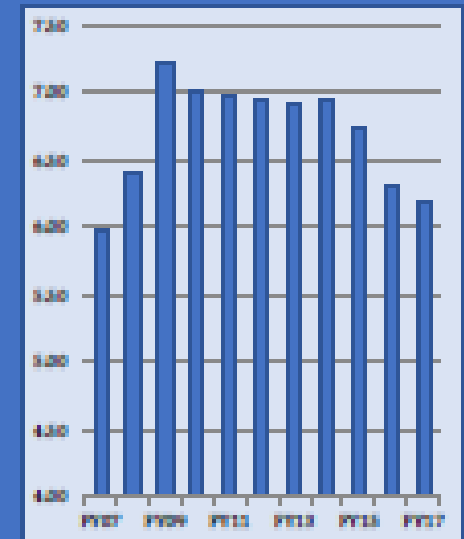
COMMUNITY INDICATORS

29% of residents bike, walk, or use public transit to get to work	20% of street corners is multi-modal	40% of community satisfied with overall flow of traffic	68% of community satisfied with availability of greenways
	36 Walkability Score	59% of community satisfied with street and sidewalk maintenance	84% of Affordable Housing Units within 1/2 mile of a bus stop

Traffic Levels at Major Corridors
(Volume-to-Capacity Ratio)



Chapel Hill Transit Ridership
(in millions)



Goals



Major Expenses



Allocation Impacts



Connected Communities

Town of Chapel Hill

