

7300 MILLHOUSE RD

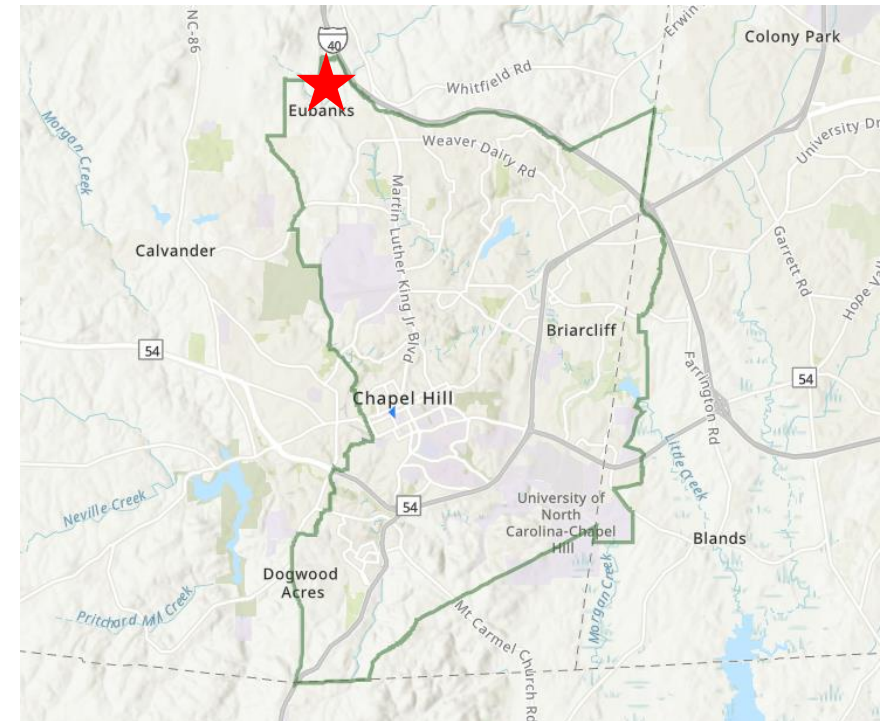
CHAPEL HILL, NORTH CAROLINA
COUNCIL HEARING
JUNE 21, 2023

EXISTING CONDITIONS

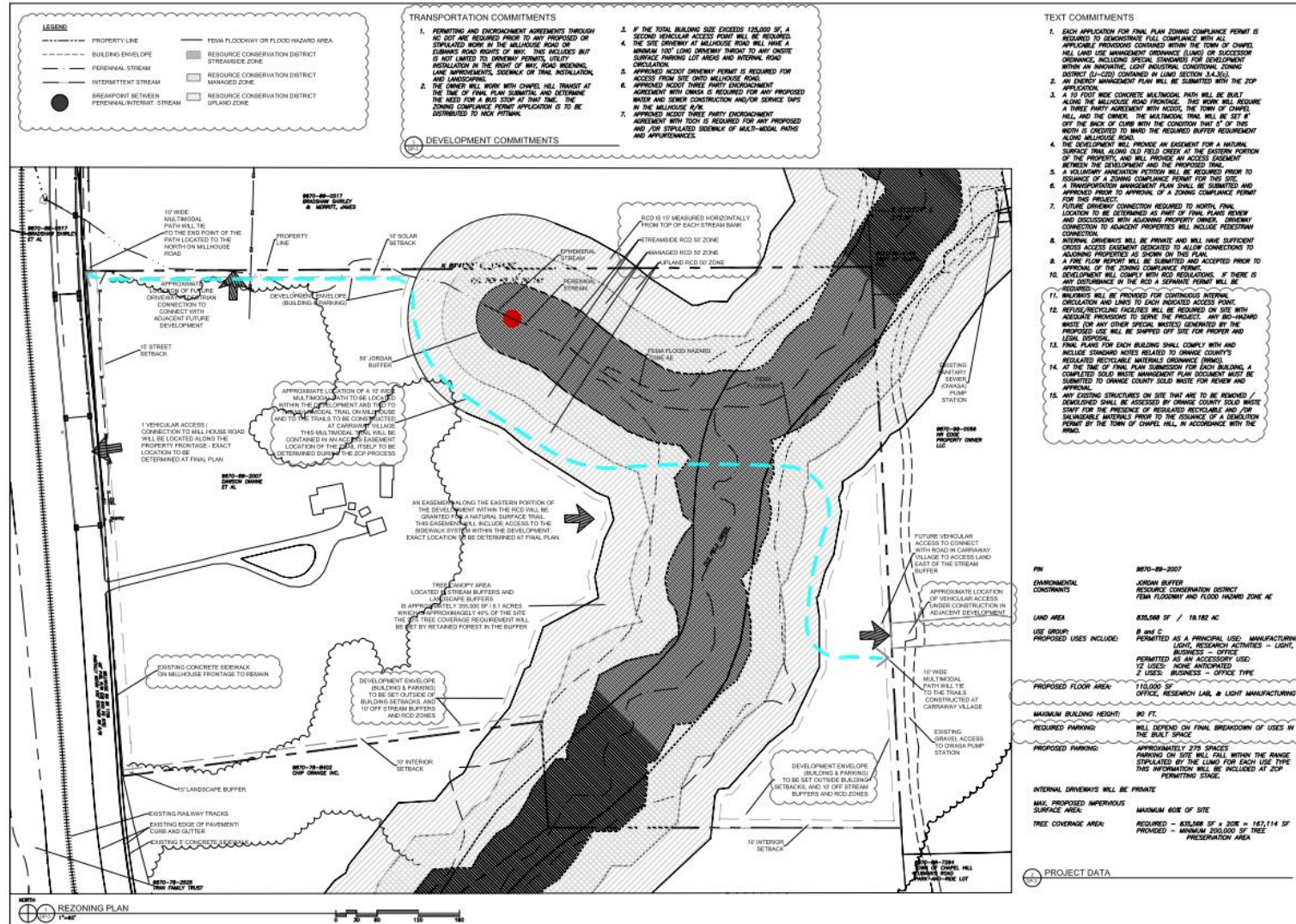
PROJECT LOCATION



- > Located on Millhouse Rd, in northwest Chapel Hill
- > Zoned LI-CZ



CONDITIONAL ZONING PERMIT (CZP)



- > Original rezoning completed in 2018
- > LI-CZ
- > 110,000 square feet of office, research lab, and light manufacturing

PROPOSED PLAN

ZONING AMENDMENT

Additional permitted uses requested:

- Recreation facility
- Public use facility
- Public service facility
- Place of worship
- Place of assembly
- Maintenance/Storage facility
- Child day care
- Supply yard

Signage modification requested:

- Allow for a Development Identification Sign
 - Width: 205 inches
 - Height: 85 inches
 - Area: 212 square feet



** FINAL NUMBERING, FONT AND GRAPHICS BY OTHERS
(MERRITT TO CONFIRM WITH SIGNAGE COMPANY)*