

# TOWN COUNCIL

CONDITIONAL ZONING  
2021.10.13

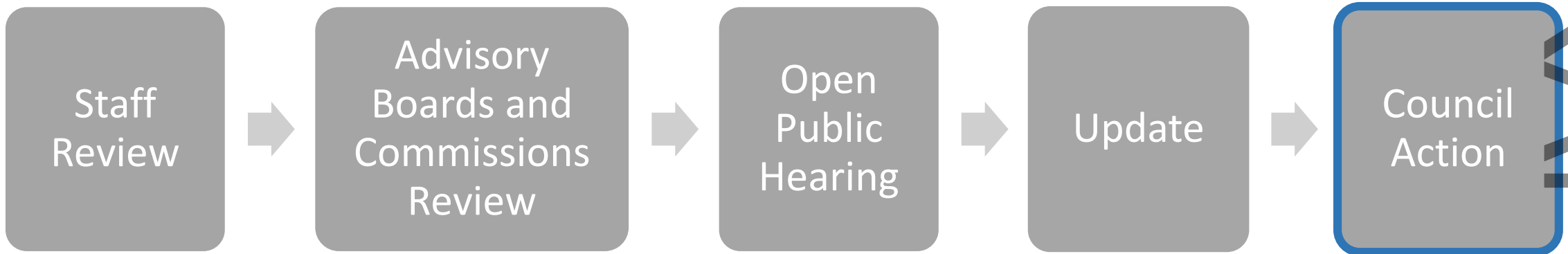
## Residence Inn and Summit Place Townhomes 101-111 Erwin Road. Chapel Hill, NC





# PROCESS

---



DRAFT



# RECOMMENDATION

- Close Legislative Hearing
- Adopt Resolution A (Resolution of Consistency)
- Adopt Resolution B (Revoking Special Use Permit)
- Enact Ordinance A (Approving Conditional Zoning Application)

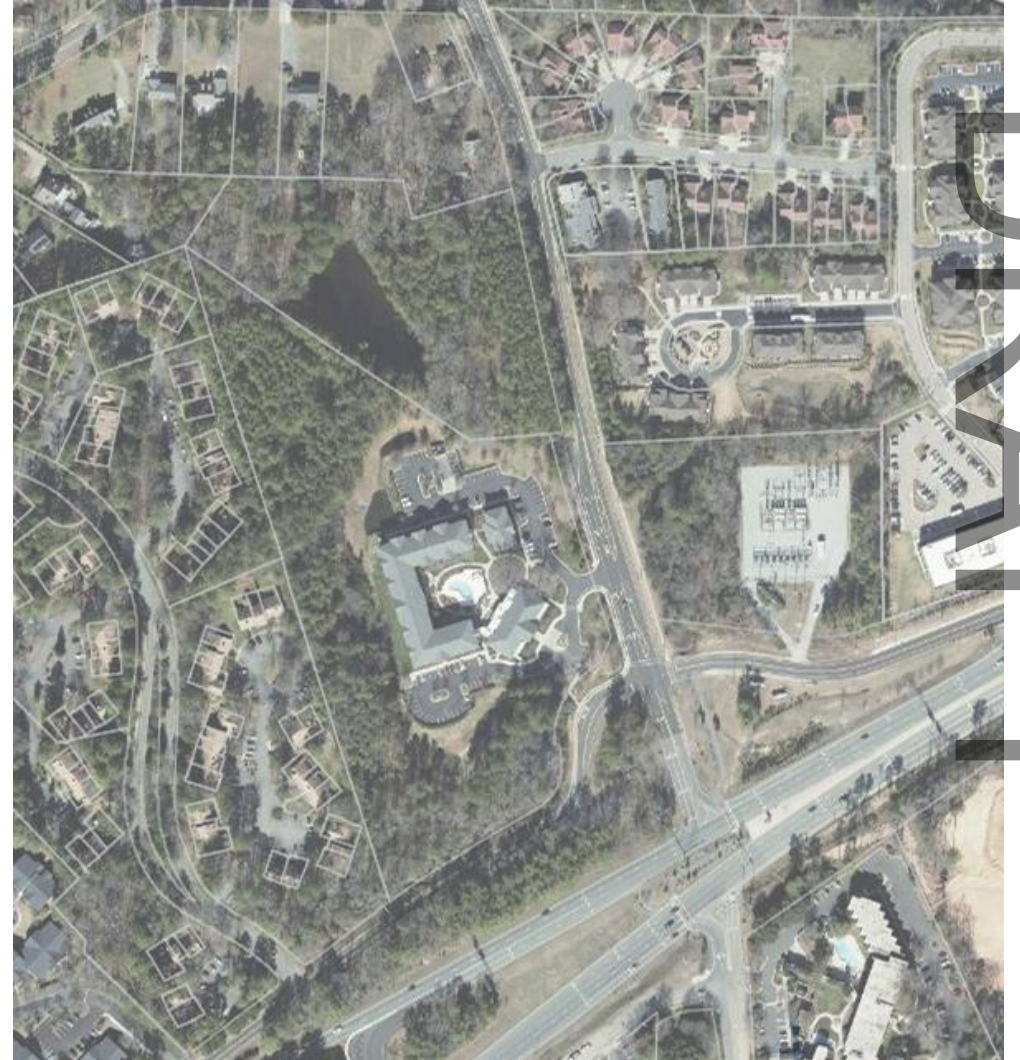


DRAFT



# PROJECT SUMMARY

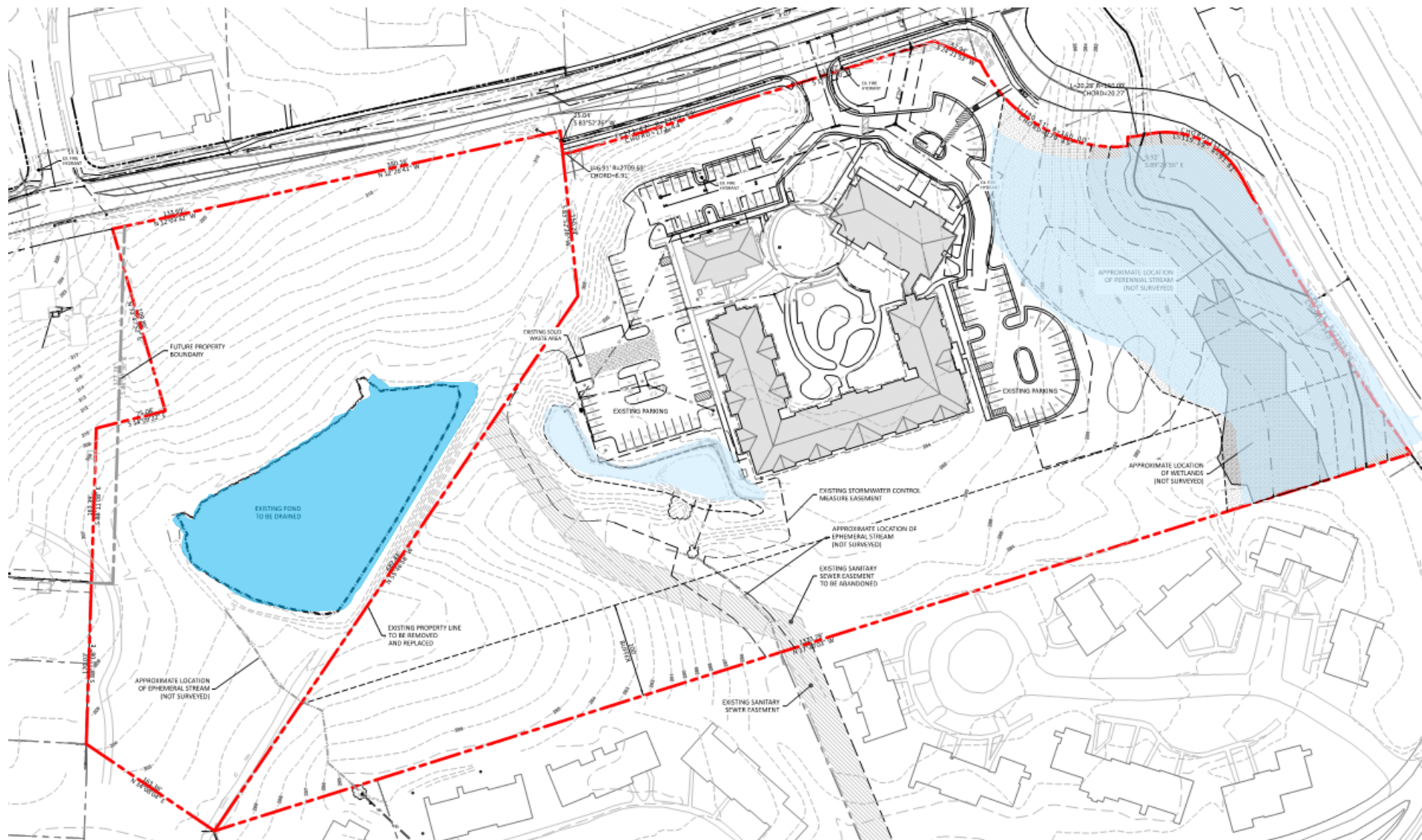
- ❑ 17.7-acre site
- ❑ Conditional Zoning
- ❑ Currently R-3-CZD and R-2
- ❑ Proposing MU-V-CZD
- ❑ Existing Residence Inn
- ❑ Construct additional 54 hotel rooms and 52 townhomes



DRAFT



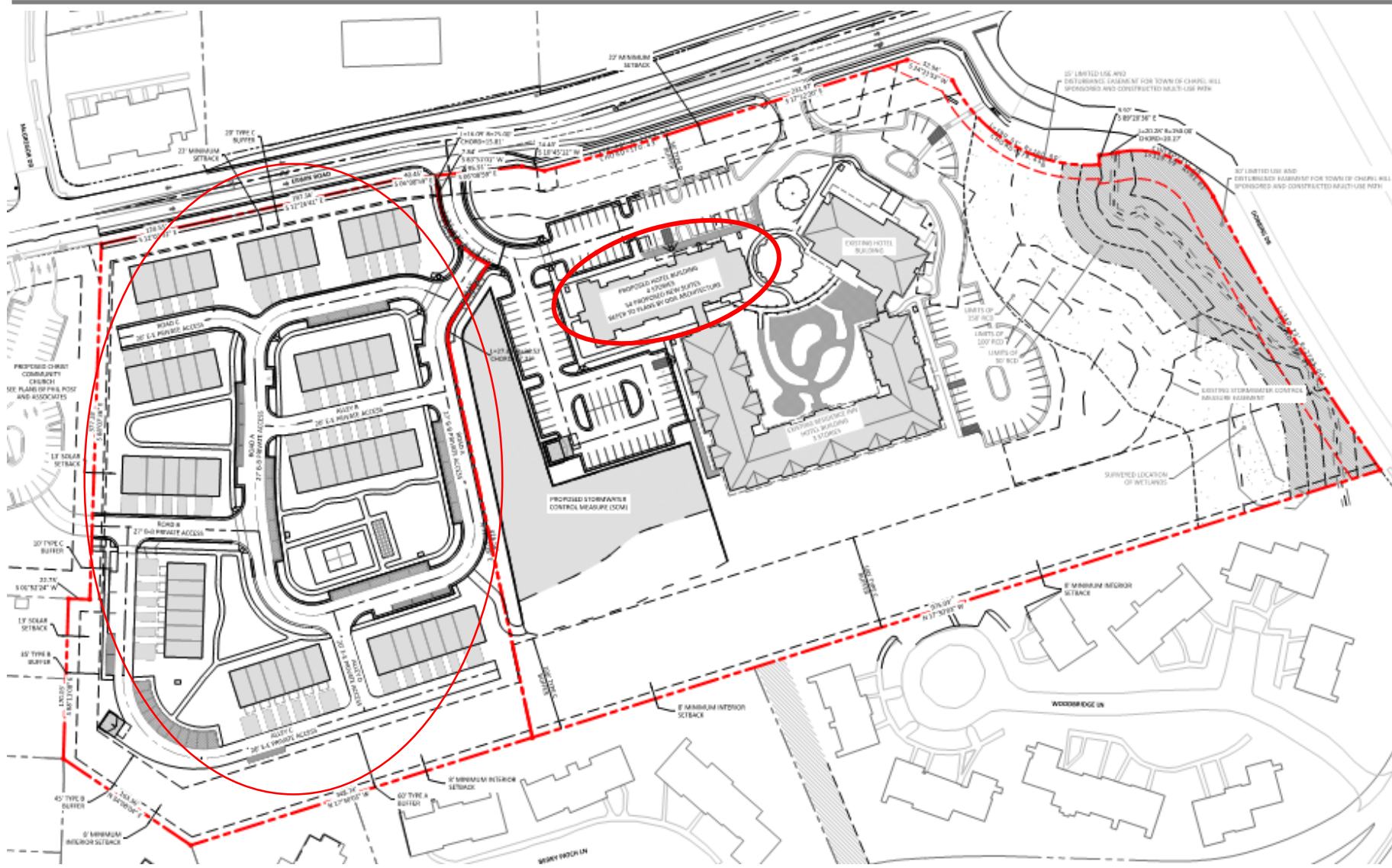
# EXISTING CONDITIONS



DRAFT



# SITE PLAN



DRAFT



# PROPOSED MODIFICATIONS

---

The applicant is requesting modifications to regulations:

- ~~Modify maximum parking spaces from 101 to 117 spaces~~
- Increased disturbance of steep slopes

DRAFT



# UPDATES SINCE SEPTEMBER 1

---

- Additional tree and topographic information provided
- Updated Stormwater Impact Analysis
- Analysis of swale feasibility completed
- Updated easement for multiuse path

DRAFT





# RECOMMENDATION

- Close Legislative Hearing
- Adopt Resolution A (Resolution of Consistency)
- Adopt Resolution B (Revoking Special Use Permit)
- Enact Ordinance A (Approving Conditional Zoning Application)



DRAFT