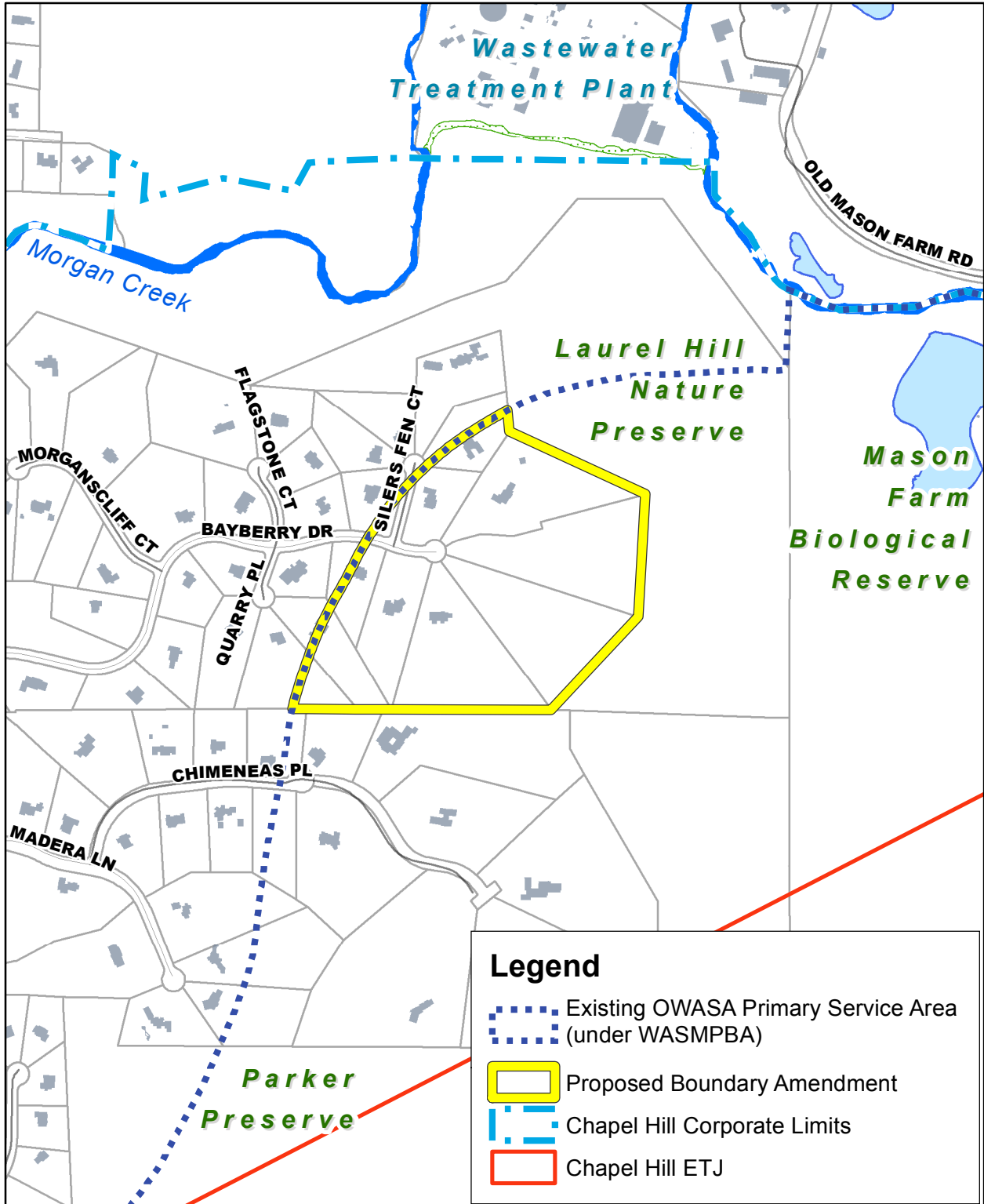






Proposed WASMPBA Boundary Amendment Map

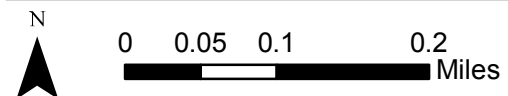


Orange Co. PIN(s):
 9797182425 (portion); 9797184466 (portion); 9797185863 (portion);
 9797187741; 9797196038 (portion); 9797198078; 9797280531;
 9797283600; 9797285945; 9797290337 (portion); 9797293252



Legend

-  Existing OWASA Primary Service Area (under WASMPBA)
-  Proposed Boundary Amendment
-  Chapel Hill Corporate Limits
-  Chapel Hill ETJ



Map Created: 10-07-20
 Planning Department