

CH3 Hargraves Park Retrofit

Chapel Hill, NC

Lighting System

Pole / Fixture Summary						
Pole ID	Pole Height	Mtg Height	Fixture Qty	Luminaire Type	Load	Circuit
P1-P4	50'	50'	1	TLC-LED-600	0.58 kW	A
		50'	2	TLC-LED-900	1.78 kW	A
4			12		9.44 kW	

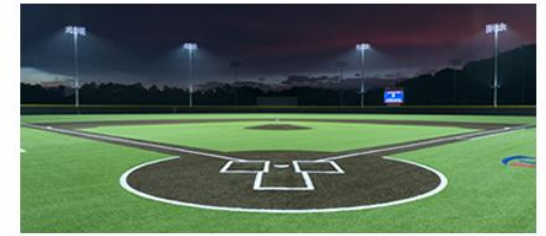
Circuit Summary			
Circuit	Description	Load	Fixture Qty
A	Tennis	9.44 kW	12

Fixture Type Summary							
Type	Source	Wattage	Lumens	L90	L80	L70	Quantity
TLC-LED-900	LED 5700K - 75 CRI	890W	89,600	>120,000	>120,000	>120,000	8
TLC-LED-600	LED 5700K - 75 CRI	580W	65,600	>120,000	>120,000	>120,000	4

Light Level Summary

Calculation Grid Summary								
Grid Name	Calculation Metric	Illumination					Circuits	Fixture Qty
		Ave	Min	Max	Max/Min	Ave/Min		
Spill/Glare - Residential	Horizontal	0	0	0.01	0.00		A	12
Spill/Glare - Residential	Max Candela (by Fixture)	135	0	611	0.00		A	12
Spill/Glare - Residential	Max Vertical Illuminance Metric	0	0	0.01	0.00		A	12
Tennis	Horizontal Illuminance	50.3	39	61	1.56	1.29	A	12

From Hometown to Professional



We Make It Happen.

Not to be reproduced in whole or part without the written consent of Musco Sports Lighting, LLC. ©1981, 2022 Musco Sports Lighting, LLC.

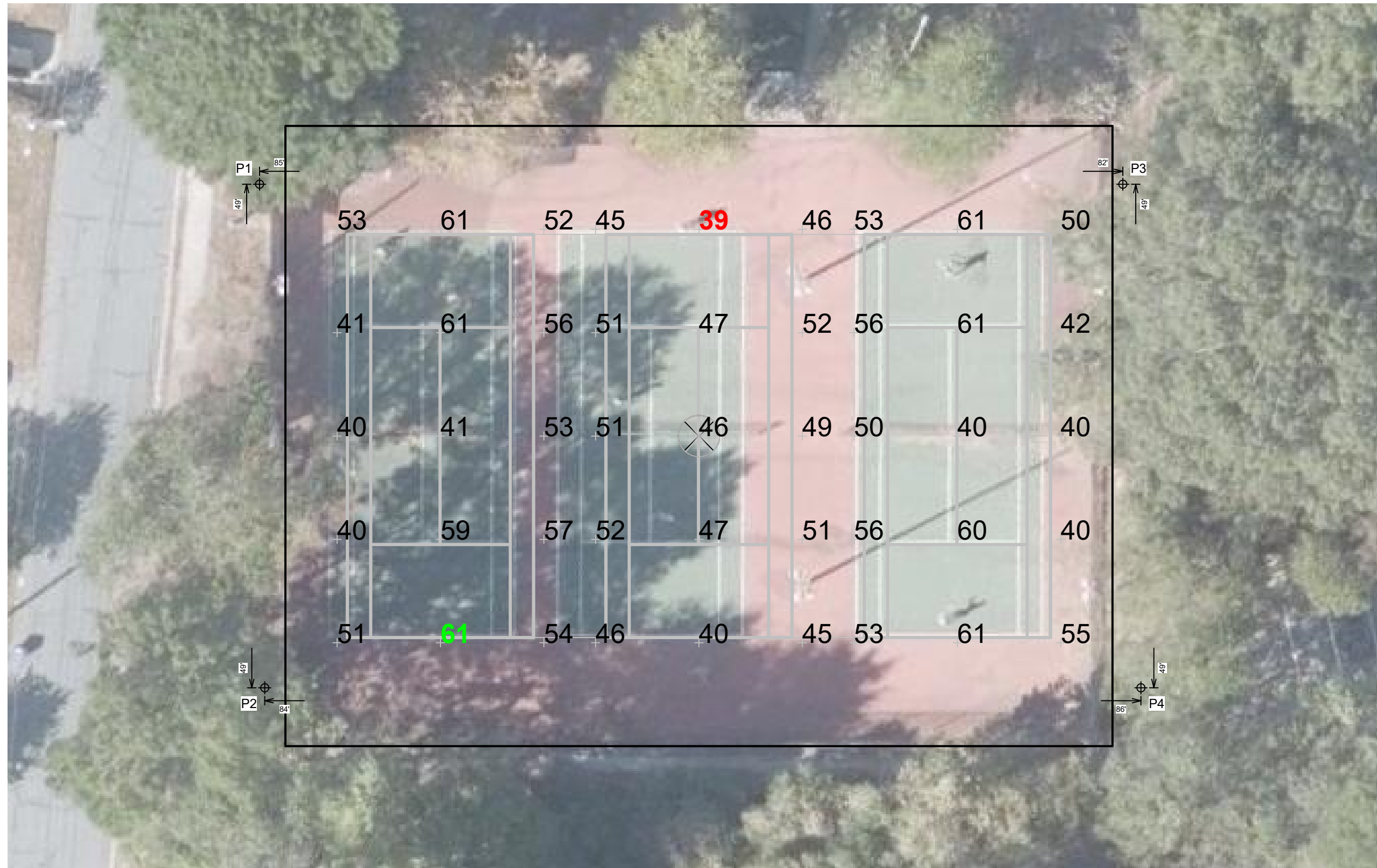
EQUIPMENT LIST FOR AREAS SHOWN								
Pole				Luminaires				
QTY	LOCATION	SIZE	GRADE ELEVATION	MOUNTING HEIGHT	LUMINAIRE TYPE	QTY / POLE	THIS GRID	OTHER GRIDS
4	P1-P4	50'		50'	TLC-LED-600	1	1	0
				50'	TLC-LED-900	2	2	0
4	TOTALS					12	12	0

CH3 Hargraves Park Retrofit

Chapel Hill, NC

GRID SUMMARY	
Name:	Tennis
Size:	3 Court - 14' Spacing
Spacing:	20.0' x 20.0'
Height:	3.0' above grade

ILLUMINATION SUMMARY	
MAINTAINED HORIZONTAL FOOTCANDLES	
Entire Grid	
Guaranteed Average:	50
Scan Average:	50.31
Maximum:	61
Minimum:	39
Avg / Min:	1.28
Guaranteed Max / Min:	2
Max / Min:	1.56
UG (adjacent pts):	0.00
CU:	0.91
No. of Points:	45
LUMINAIRE INFORMATION	
Applied Circuits:	A
No. of Luminaires:	12
Total Load:	9.44 kW



Guaranteed Performance: The ILLUMINATION described above is guaranteed per your Musco Warranty document and includes a 0.95 dirt depreciation factor.

Field Measurements: Individual field measurements may vary from computer-calculated predictions and should be taken in accordance with IESNA RP-6-15.

Electrical System Requirements: Refer to Amperage Draw Chart and/or the "Musco Control System Summary" for electrical sizing.

Installation Requirements: Results assume ± 3% nominal voltage at line side of the driver and structures located within 3 feet (1m) of design locations.



Pole location(s) Ⓧ dimensions are relative to 0,0 reference point(s) ⊗



We Make It Happen.

EQUIPMENT LIST FOR AREAS SHOWN								
Pole			Luminaires					
QTY	LOCATION	SIZE	GRADE ELEVATION	MOUNTING HEIGHT	LUMINAIRE TYPE	QTY / POLE	THIS GRID	OTHER GRIDS
4	P1-P4	50'	-	50'	TLC-LED-600	1	1	0
				50'	TLC-LED-900	2	2	0
4	TOTALS					12	12	0

CH3 Hargraves Park Retrofit

Chapel Hill, NC

GRID SUMMARY	
Name:	Spill/Glare - Residential
Spacing:	30.0'
Height:	3.0' above grade

ILLUMINATION SUMMARY	
HORIZONTAL FOOTCANDLES	
Scan Average:	Entire Grid 0.0015
Maximum:	0.01
Minimum:	0.00
No. of Points:	21
LUMINAIRE INFORMATION	
Applied Circuits:	A
No. of Luminaires:	12
Total Load:	9.44 kW

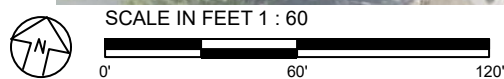


Guaranteed Performance: The ILLUMINATION described above is guaranteed per your Musco Warranty document.

Field Measurements: Individual field measurements may vary from computer-calculated predictions and should be taken in accordance with IESNA RP-6-15.

Electrical System Requirements: Refer to Amperage Draw Chart and/or the "Musco Control System Summary" for electrical sizing.

Installation Requirements: Results assume $\pm 3\%$ nominal voltage at line side of the driver and structures located within 3 feet (1m) of design locations.



Pole location(s) \oplus dimensions are relative to 0,0 reference point(s) \otimes



We Make It Happen.

Not to be reproduced in whole or part without the written consent of Musco Sports Lighting, LLC. ©1981, 2022 Musco Sports Lighting, LLC.

EQUIPMENT LIST FOR AREAS SHOWN								
Pole			Luminaires					
QTY	LOCATION	SIZE	GRADE ELEVATION	MOUNTING HEIGHT	LUMINAIRE TYPE	QTY / POLE	THIS GRID	OTHER GRIDS
4	P1-P4	50'	-	50'	TLC-LED-600	1	1	0
				50'	TLC-LED-900	2	2	0
4	TOTALS					12	12	0

CH3 Hargraves Park Retrofit

Chapel Hill, NC

GRID SUMMARY	
Name:	Spill/Glare - Residential
Spacing:	30.0'
Height:	3.0' above grade

ILLUMINATION SUMMARY	
MAX VERTICAL FOOTCANDLES	
Scan Average:	Entire Grid 0.0046
Maximum:	0.01
Minimum:	0.00
No. of Points:	21
LUMINAIRE INFORMATION	
Applied Circuits:	A
No. of Luminaires:	12
Total Load:	9.44 kW

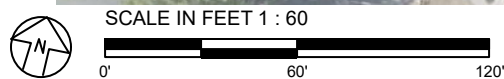


Guaranteed Performance: The ILLUMINATION described above is guaranteed per your Musco Warranty document.

Field Measurements: Individual field measurements may vary from computer-calculated predictions and should be taken in accordance with IESNA RP-6-15.

Electrical System Requirements: Refer to Amperage Draw Chart and/or the "Musco Control System Summary" for electrical sizing.

Installation Requirements: Results assume $\pm 3\%$ nominal voltage at line side of the driver and structures located within 3 feet (1m) of design locations.



Pole location(s) \oplus dimensions are relative to 0,0 reference point(s) \otimes



We Make It Happen.

Not to be reproduced in whole or part without the written consent of Musco Sports Lighting, LLC. ©1981, 2022 Musco Sports Lighting, LLC.

EQUIPMENT LIST FOR AREAS SHOWN								
Pole			Luminaires					
QTY	LOCATION	SIZE	GRADE ELEVATION	MOUNTING HEIGHT	LUMINAIRE TYPE	QTY / POLE	THIS GRID	OTHER GRIDS
4	P1-P4	50'	-	50'	TLC-LED-600	1	1	0
				50'	TLC-LED-900	2	2	0
4	TOTALS					12	12	0

CH3 Hargraves Park Retrofit

Chapel Hill, NC

GRID SUMMARY	
Name:	Spill/Glare - Residential
Spacing:	30.0'
Height:	3.0' above grade

ILLUMINATION SUMMARY	
CANDELA (PER FIXTURE)	
Scan Average:	Entire Grid 134.9698
Maximum:	610.71
Minimum:	0.00
No. of Points:	21
LUMINAIRE INFORMATION	
Applied Circuits:	A
No. of Luminaires:	12
Total Load:	9.44 kW

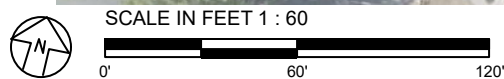


Guaranteed Performance: The ILLUMINATION described above is guaranteed per your Musco Warranty document.

Field Measurements: Individual field measurements may vary from computer-calculated predictions and should be taken in accordance with IESNA RP-6-15.

Electrical System Requirements: Refer to Amperage Draw Chart and/or the "Musco Control System Summary" for electrical sizing.

Installation Requirements: Results assume $\pm 3\%$ nominal voltage at line side of the driver and structures located within 3 feet (1m) of design locations.



Pole location(s) \oplus dimensions are relative to 0,0 reference point(s) \otimes



We Make It Happen.

Not to be reproduced in whole or part without the written consent of Musco Sports Lighting, LLC. ©1981, 2022 Musco Sports Lighting, LLC.

CH3 Hargraves Park Retrofit

Chapel Hill, NC

EQUIPMENT LAYOUT

INCLUDES:

Tennis

Electrical System Requirements: Refer to Amperage Draw Chart and/or the "Musco Control System Summary" for electrical sizing.

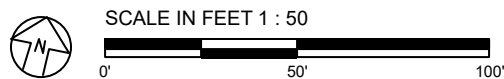
Installation Requirements: Results assume ± 3% nominal voltage at line side of the driver and structures located within 3 feet (1m) of design locations.

EQUIPMENT LIST FOR AREAS SHOWN

QTY	LOCATION	Pole		Luminaires		QTY / POLE
		CLASS	GRADE ELEVATION	MOUNTING HEIGHT	LUMINAIRE TYPE	
4	P1-P4	LSS50AB	-	50'	TLC-LED-600	1
				50'	TLC-LED-900	2
TOTALS						12

SINGLE LUMINAIRE AMPERAGE DRAW CHART

Ballast Specifications (.90 min power factor)	Line Amperage Per Luminaire (max draw)						
	208 (60)	220 (60)	240 (60)	277 (60)	347 (60)	380 (60)	480 (60)
Single Phase Voltage	208 (60)	220 (60)	240 (60)	277 (60)	347 (60)	380 (60)	480 (60)
TLC-LED-900	5.3	5.0	4.6	4.0	3.2	2.9	2.3
TLC-LED-600	3.4	3.2	3.0	2.6	2.0	1.9	1.5



Pole location(s) ⊕ dimensions are relative to 0,0 reference point(s) ⊗



We Make It Happen.

Not to be reproduced in whole or part without the written consent of Musco Sports Lighting, LLC. ©1981, 2022 Musco Sports Lighting, LLC.