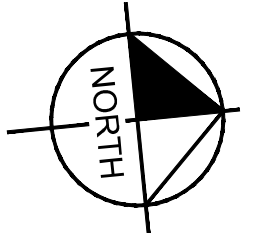
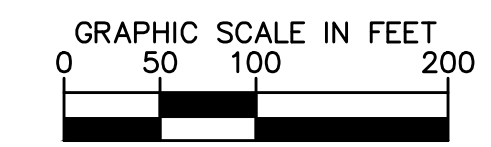
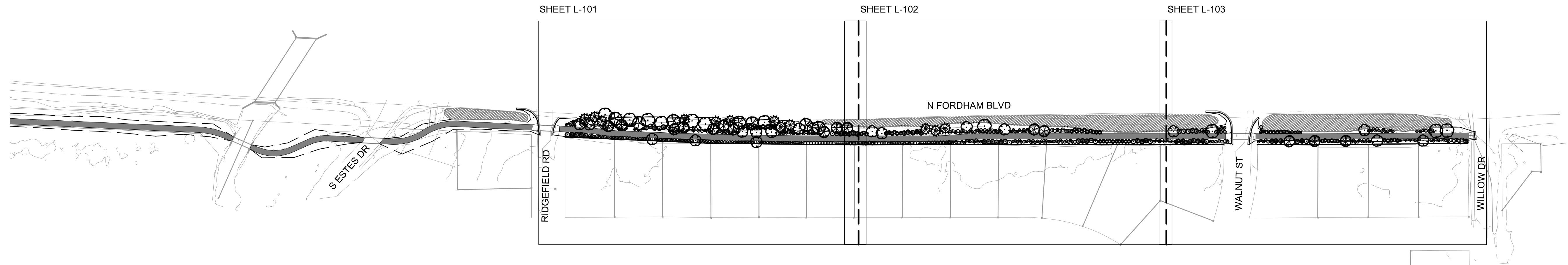


INCOMPLETE PLANS
DO NOT USE FOR R/W ACQUISITION

DOCUMENT NOT CONSIDERED FINAL
UNLESS ALL SIGNATURES COMPLETED

SITE KEY PLAN:



GENERAL LANDSCAPE NOTES:

- THE CONTRACT INCLUDES ALL DEMOLITION REQUIRED TO COMPLETE JOB, AND TO REMOVE AND TO DISPOSE OF ITEMS FROM SITE COMPLETELY IN ACCORDANCE WITH LOCAL LAWS. DO NOT BURN OR BURY ANY DEMOLITION ITEMS ON SITE. CONTRACTOR IS RESPONSIBLE FOR MAKING SITE VISIT TO DETERMINE AND VERIFY ALL DEMOLITION REQUIREMENTS PRIOR TO BIDDING. CONTRACTOR SHALL RECYCLE OR DISPOSE OF WASTE PRODUCTS AND PLANT CONTAINERS OFF-SITE IN A RESPONSIBLE MANNER.
- PERMITS AND FEES REQUIRED FOR WORK MUST BE OBTAINED BY THE CONTRACTOR AT CONTRACTOR'S EXPENSE.
- THE CONTRACTOR SHALL TAKE PROPER PRECAUTIONS NOT TO DAMAGE EXISTING ADJACENT PLANTS, FACILITIES & STRUCTURES THAT ARE TO REMAIN. THE CONTRACTOR SHALL RESTORE DISTURBED AREAS TO THEIR ORIGINAL CONDITION TO THE SATISFACTION OF THE LANDSCAPE ARCHITECT & TOWN OF CHAPEL HILL. ADJACENT STREETS & SIDEWALKS SHALL BE MAINTAINED IN A CLEAN CONDITION, MUD & DUST-FREE.
- EXISTING UTILITIES SHOWN ON LANDSCAPE DRAWINGS ARE FOR CONTRACTOR'S CONVENIENCE ONLY. THE CONTRACTOR MUST LOCATE & VERIFY ALL SUCH INFORMATION, INCLUDING INFORMATION NOT SHOWN ON PLANS, BY CONTACTING THE INDIVIDUAL UTILITY COMPANY & INVESTIGATING THE SITE TO DETERMINE THE EXACT LOCATION OF UTILITY LINES & STRUCTURES. THE CONTRACTOR SHALL BE RESPONSIBLE FOR REPAIRING, AT HIS OWN EXPENSE, AND TO THE SATISFACTION OF THE TOWN & THE UTILITY OWNER, DAMAGE TO ANY UTILITY CAUSED BY HIS WORK. HE SHALL IMMEDIATELY NOTIFY THE TOWN & THE UTILITY OWNER OF ANY DAMAGE TO ANY UTILITY BY HIS OPERATION.
- CONTRACTOR SHALL VERIFY ALL CONDITIONS AND DIMENSIONS AT THE JOB SITE PRIOR TO START OF CONSTRUCTION. IF DISCREPANCIES ARE FOUND, NOTIFY THE LANDSCAPE ARCHITECT IMMEDIATELY FOR CLARIFICATION.
- FOR SIGNAGE INFORMATION, SEE ROADWAY DRAWINGS.

- PLANT SPECIES ARE SELECTED FOR HARDINESS IN LOCAL CLIMATE. PERMANENT IRRIGATION IS NOT PART OF THIS CONTRACT. PLANTS ARE TO BE WATERED BY CONTRACTOR DURING ESTABLISHMENT PERIOD.
- SAFE, CLEARLY MARKED PEDESTRIAN AND VEHICULAR ACCESS TO ALL ADJACENT PROPERTIES MUST BE MAINTAINED THROUGHOUT THE CONSTRUCTION PROCESS. SEE ROADWAY PLANS FOR INFORMATION.

PLANTING NOTES:

- ALL PLANTS PROVIDED BY CONTRACTOR SHALL MEET OR SURPASS THE SPECIFICATIONS GIVEN IN THE PLANT TABLE AND CONFORM TO THE AMERICAN STANDARD FOR NURSERY STOCK, ANSI Z601-1973 IN REGARD TO SIZING, GROWING AND B&B SPECIFICATIONS. PLANTS SHALL BE FULL AND HEAVY, AND IN HEALTHY CONDITION AT THE TIME OF PLANTING. LANDSCAPE ARCHITECT SHALL REJECT ANY PLANT NOT MEETING THESE GUIDELINES BEFORE, DURING OR AFTER INSTALLATION.
- ALL PLANTS ARE TO BE FULLY GUARANTEED (LABOR AND MATERIALS) FOR A PERIOD OF NOT LESS THAN ONE (1) YEAR FROM DATE OF INSTALLATION.
- PLANTING SEASON IS OCT. 15 - MAR. 15 UNLESS OTHERWISE NOTED OR APPROVED BY THE LANDSCAPE ARCHITECT. ALL PLANTS THAT ARE UNABLE TO BE IMMEDIATELY PLANTED SHALL BE STORED IN A PROTECTED AREA OUT OF DIRECT SUN AND WIND. PLANTS SHALL BE EVENLY AND CONSISTENTLY WATERED, AS NEEDED, TO PREVENT DRYING OF ROOTS. ROOT BALLS OF B&B STOCK SHALL BE COVERED WITH AT LEAST 4 INCHES OF HARDWOOD MULCH TO MAINTAIN MOISTURE IN ROOTS.
- THE CONTRACTOR SHALL VERIFY ALL PLANT QUANTITIES SHOWN ON PLANS AND CLARIFY ANY DISCREPANCIES WITH LANDSCAPE ARCHITECT PRIOR TO PURCHASING PLANTS. CONTRACTOR SHALL TAG ALL TREES (AS DESIGNATED IN THE MASTER PLANT LIST) AT THE NURSERY FOR APPROVAL BY THE LANDSCAPE ARCHITECT PRIOR TO PURCHASING PLANTS.
- LANDSCAPE ARCHITECT SHALL BE NOTIFIED IN WRITING OF ANY

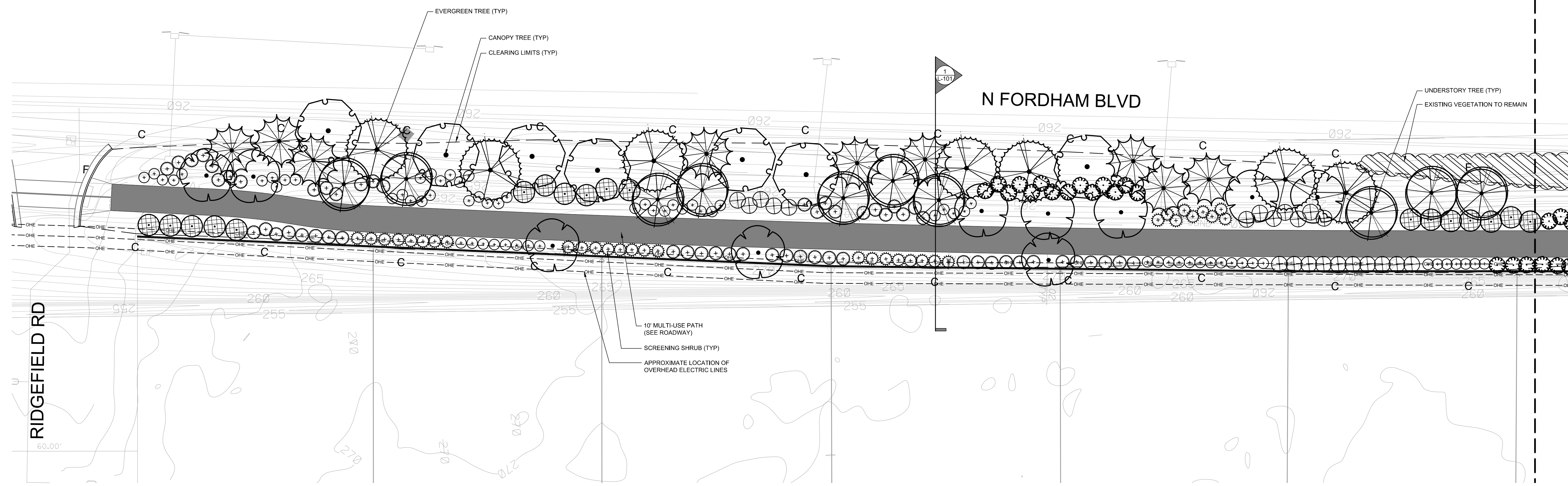
PROPOSED PLANT SUBSTITUTIONS BY THE CONTRACTOR. NO SUBSTITUTIONS SHALL BE MADE UNDER ANY CIRCUMSTANCES WITHOUT PRIOR APPROVAL BY THE LANDSCAPE ARCHITECT.

- ALL PLANTS AND PLANTING BEDS SHALL BE LOCATED BY SCALED DIMENSIONS FROM BUILDINGS, CURBS, PAVEMENTS, ETC. SPECIFIC ATTENTION SHALL BE GIVEN TO ENSURE THAT PLANTS INDIVIDUALLY SHOWN ON THE PLAN ARE ACCURATELY LOCATED. LOCATION OF ALL PLANTS SHALL BE REVIEWED IN THE FIELD BY THE LANDSCAPE ARCHITECT PRIOR TO INSTALLATION. THE CONTRACTOR SHALL PROVIDE 48 HOURS NOTICE FOR REVIEW.
- ALL LANDSCAPE AREAS TO BE GRADED FOR POSITIVE DRAINAGE AND TO ENSURE NO STANDING WATER. SEE GRADING PLAN AND DRAINAGE PLANS FOR SPECIFIC GRADING INFORMATION AND PIPE INVERTS.
- FOR NEW PLANTING AREAS, REMOVE ALL PAVEMENT, GRAVEL, SUB-BASE AND CONSTRUCTION DEBRIS. REMOVE COMPACTED SOIL AND ADD 24 INCHES OF NEW TOPSOIL OR UNCOMPACT AND AMEND THE TOP 24 INCHES OF EXISTING SOIL TO MEET TOPSOIL PLANTING MIX STANDARDS FOR TREES. ESTABLISH AND MAINTAIN TOP OF GRADE BELOW ADJACENT CURBS, WALKWAYS AND OTHER HARDSCAPE AREAS TO ALLOW FOR INSTALLATION OF MULCH.
- ALL SHRUB, GROUND COVER & ANNUAL PLANTING BEDS SHALL BE FILLED WITH MULCH TO A MINIMUM DEPTH OF 3 INCHES. MULCH SHALL BE DARK BROWN, DESIGNER-GRADE, DOUBLE-SHREDDED HARDWOOD. CONTRACTOR TO SUBMIT A SAMPLE FOR APPROVAL BY LANDSCAPE ARCHITECT PRIOR TO PURCHASE AND DELIVERY TO PROJECT SITE.
- FINISH OFF 2' - 4' CLEAR ZONE AROUND TREES WITH A 3" LAYER OF MULCH, BUT DO NOT PLACE UP AGAINST OR MOUND AROUND ROOT FLARE.
- MIXED GROUND COVER AND PLANTS SPECIFIED FOR MASS PLANTINGS SHALL BE PLANTED IN GROUPS OF 3 - 7 AND LOCATED AS REQUIRED TO PROVIDE A GENERAL MIXING OF SPECIES. DO NOT PLANT IN ROWS OR REPETITIVE PATTERNS UNLESS OTHERWISE DIRECTED.
- STREET TREES ADJACENT TO PEDESTRIAN WALKWAYS AND IN

VEHICULAR SITE TRIANGLES SHALL BE UNDER-TRIMMED SUFFICIENTLY TO ALLOW CLEAR SIGHT AND PEDESTRIAN ACCESS UP TO 6 FEET ABOVE SIDEWALK ELEVATION. ALL PRUNING SHALL BE PERFORMED BY A CERTIFIED ARBORIST, AND ADHERE TO THE ANSI A300 PRUNING STANDARD. PRUNING CUTS ARE TO BE DELIBERATE AND TARGETED ONLY TO THE NECESSARY BRANCHES IN ORDER TO SATISFY SIGHT AND CLEARANCE REQUIREMENTS WHILE MAINTAINING THE INTEGRITY OF THE TREES.

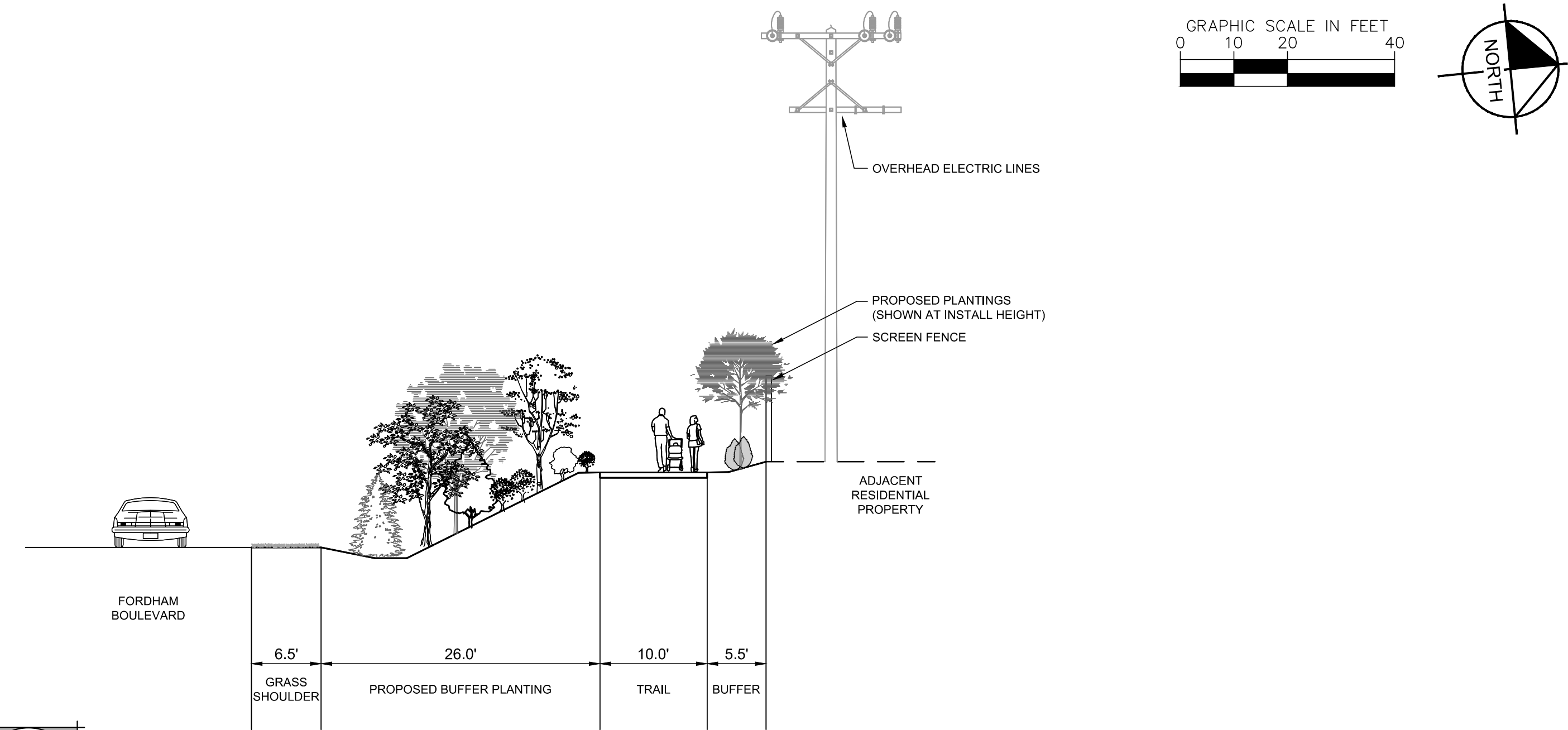
- CONTRACTOR IS RESPONSIBLE FOR FULLY MAINTAINING ALL PLANTING (INCLUDING, BUT NOT LIMITED TO WATERING, MULCHING, SPRAYING, FERTILIZING, ETC.) OF THE PLANTING AREAS UNTIL FINAL ACCEPTANCE.
- ANY PLANT MATERIAL WHICH DIES, TURNS BROWN OR DEFOLIATES PRIOR TO SUBSTANTIAL COMPLETION OF THE WORK SHALL BE PROMPTLY REMOVED FROM THE SITE AND REPLACED WITH MATERIAL OF THE SAME SPECIES IN ACCORDANCE WITH THE APPROPRIATE PLANTING SEASON. QUANTITY AND SIZE ARE TO MEET PLANT SPECIFICATIONS.
- CONTRACTOR SHALL COMPLY WITH ALL APPLICABLE CODES & ORDINANCES REGARDING LANDSCAPING.

REVISIONS



PLANT SCHEDULE SHEET L-101

EVERGREEN TREES	CODE	QTY	BOTANICAL NAME	COMMON NAME	CONT.	CALIPER	
	IO	7	ILEX OPACA	AMERICAN HOLLY	B&B	2.5" CAL	
	IXM	18	ILEX X 'MARY NELL'	MARY NELL HOLLY	CONT.	8' HEIGHT MIN.	
	JVH	17	JUNIPERUS VIRGINIANA 'CUPRESSIFOLIA'	HILLSPIRE JUNIPER	CONT.	8' HEIGHT MIN.	
	MGB	9	MAGNOLIA GRANDIFLORA 'BRACKENS BROWN BEAUTY'	BRACKEN'S SOUTHERN MAGNOLIA	B&B	2.5" CAL	
SHADE TREES	CODE	QTY	BOTANICAL NAME	COMMON NAME	CONT.	CALIPER	
	CCA	7	CARPINUS CAROLINIANA	AMERICAN HORNBEAM	B&B	3" CAL	
UNDERSTORY TREES	CODE	QTY	BOTANICAL NAME	COMMON NAME	CONT.	CALIPER	
	MV	10	MAGNOLIA VIRGINIANA	SWEET BAY	B&B	2.5" CAL	
	SJP	10	STYRAX JAPONICUS 'PINK CHIMES'	JAPANESE PINK SNOWBELL DWARF	B&B	2.5" CAL	
SHRUBS	CODE	QTY	BOTANICAL NAME	COMMON NAME	CONT.	HEIGHT	SPACING
	CSJ	57	CAMELLIA SASANQUA 'JEAN MAY'	JEAN MAY CAMELLIA	CONT.	36" MIN.	60" o.c.
	HOA	22	HYDRANGEA QUERCIFOLIA 'ALICE'	ALICE OAKLEAF HYDRANGEA	CONT.	36" MIN.	72" o.c.
	IG	68	ILEX GLABRA	INKBERRY HOLLY	CONT.	24" MIN.	48" o.c.
	JCM	33	JUNIPERUS CHINENSIS 'MINT JULEP'	MINT JULEP JUNIPER	CONT.	36" MIN.	60" o.c.

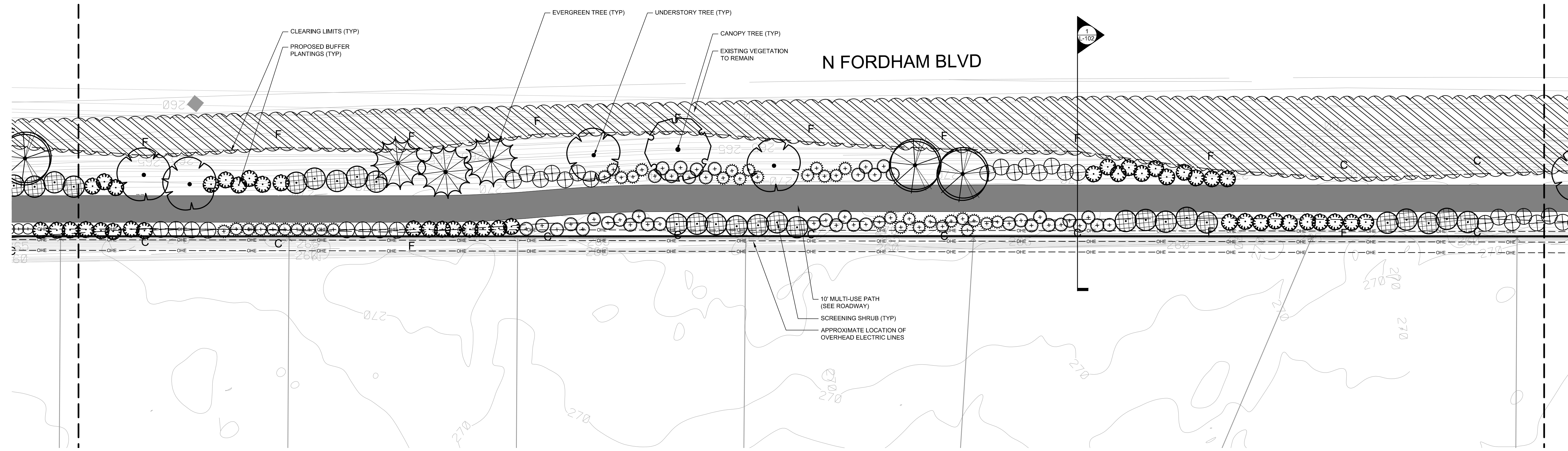


1 LANDSCAPED BUFFER SECTION
L-101 SCALE: 1" = 10'-0"

SECTION

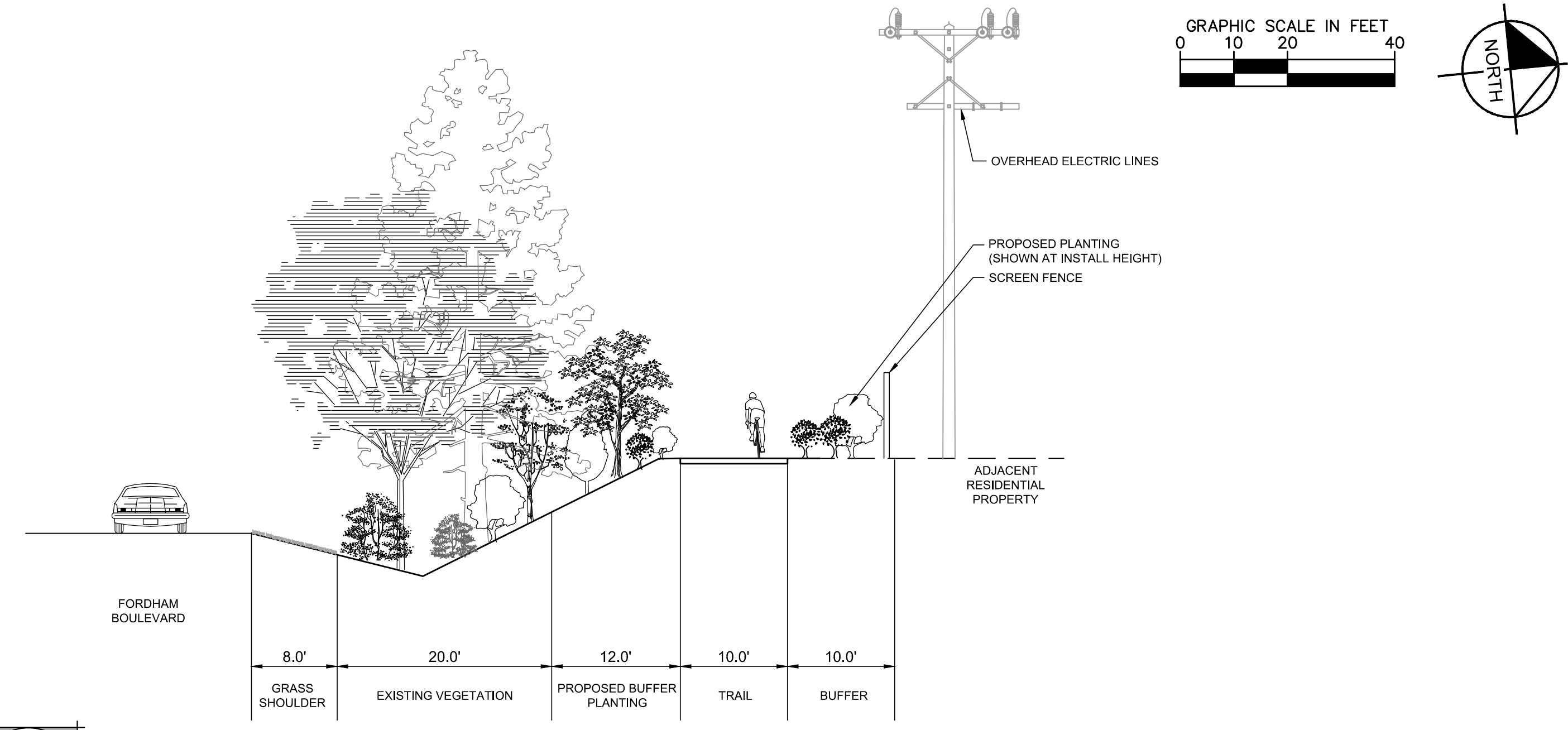
REVISIONS

2/13/2020



PLANT SCHEDULE SHEET L-102

EVERGREEN TREES	CODE	QTY	BOTANICAL NAME	COMMON NAME	CONT.	CALIPER	
	IKM	22	ILEX X 'MARY NELL'	MARY NELL HOLLY	CONT.	8" HEIGHT MIN.	
	JVH	43	JUNIPERUS VIRGINIANA 'CUPRESSIFOLIA'	HILLSPIRE JUNIPER	CONT.	8" HEIGHT MIN.	
	MGB	3	MAGNOLIA GRANDIFLORA 'BRACKENS BROWN BEAUTY'	BRACKEN'S SOUTHERN MAGNOLIA	B&B	2.5" CAL	
SHADE TREES	CODE	QTY	BOTANICAL NAME	COMMON NAME	CONT.	CALIPER	
	CCA	1	CARPINUS CAROLINIANA	AMERICAN HORNBEAM	B&B	3" CAL	
UNDERSTORY TREES	CODE	QTY	BOTANICAL NAME	COMMON NAME	CONT.	CALIPER	
	MV	2	MAGNOLIA VIRGINIANA	SWEET BAY	B&B	2.5" CAL	
	SJP	4	STYRAX JAPONICUS 'PINK CHIMES'	JAPANESE PINK SNOWBELL DWARF	B&B	2.5" CAL	
SHRUBS	CODE	QTY	BOTANICAL NAME	COMMON NAME	CONT.	HEIGHT	SPACING
	CSJ	42	CAMELLIA SASANQUA 'JEAN MAY'	JEAN MAY CAMELLIA	CONT.	36" MIN.	60" o.c.
	HQA	28	HYDRANGEA QUERCIFOLIA 'ALICE'	ALICE OAKLEAF HYDRANGEA	CONT.	36" MIN.	72" o.c.
	JCM	38	JUNIPERUS CHINENSIS 'MINT JULEP'	MINT JULEP JUNIPER	CONT.	36" MIN.	60" o.c.

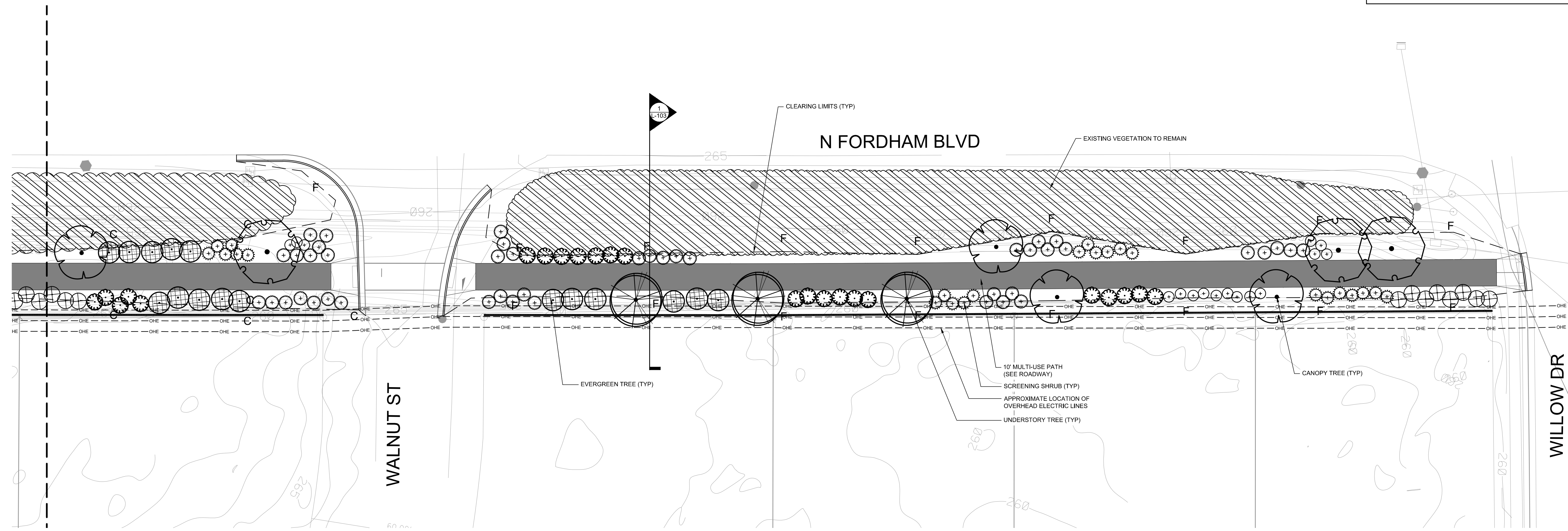


1 LANDSCAPED BUFFER SECTION
L-102 SCALE: 1" = 10'-0"

SECTION

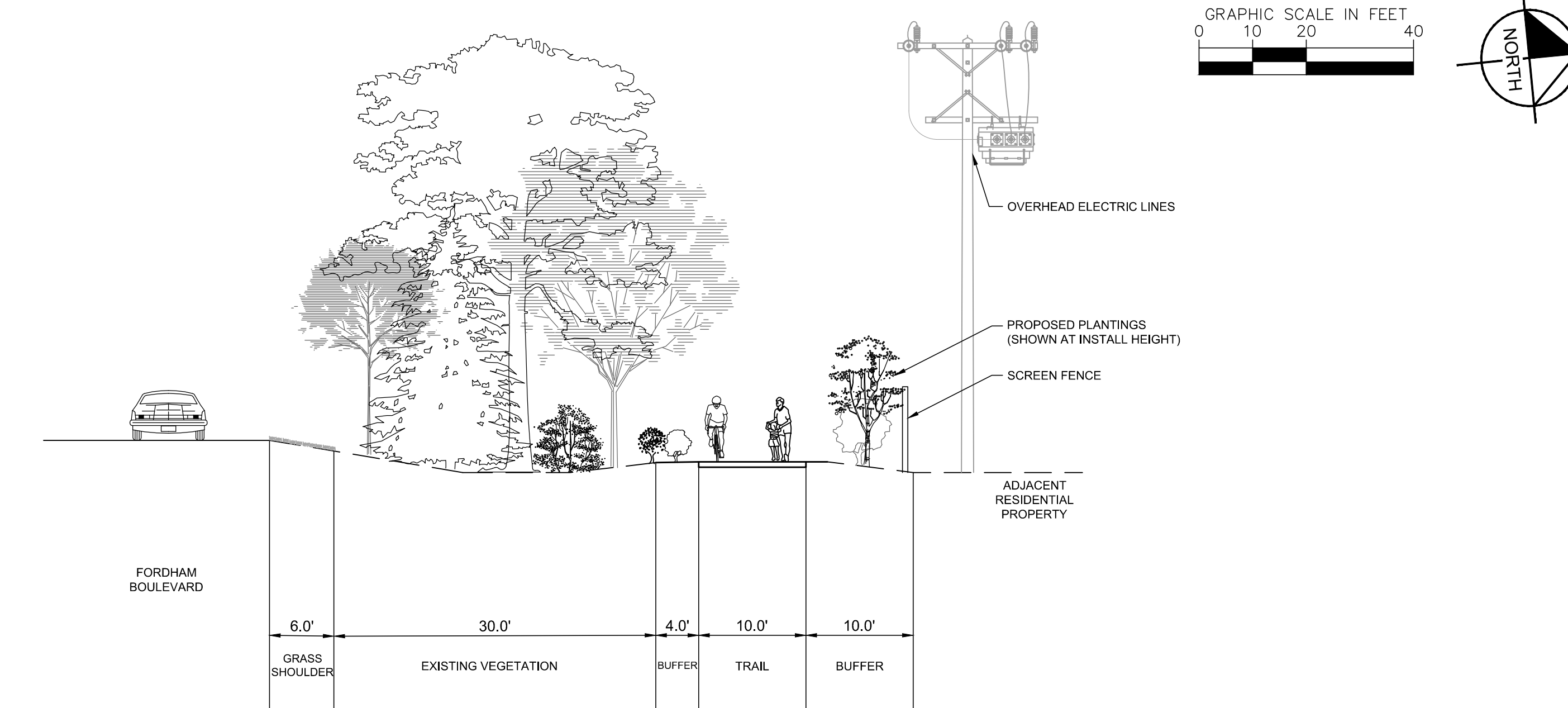
REVISIONS

2/13/2020



PLANT SCHEDULE SHEET L-103

EVERGREEN TREES	CODE	QTY	BOTANICAL NAME	COMMON NAME	CONT.	CALIPER	
	IXM	16	ILEX X 'MARY NELL'	MARY NELL HOLLY	CONT.	8" HEIGHT MIN.	
	JVH	23	JUNIPERUS VIRGINIANA 'CUPRESSIFOLIA'	HILLSPIRE JUNIPER	CONT.	8" HEIGHT MIN.	
SHADE TREES	CODE	QTY	BOTANICAL NAME	COMMON NAME	CONT.	CALIPER	
	CCA	3	CARPINUS CAROLINIANA	AMERICAN HORNBEAM	B&B	3" CAL	
UNDERSTORY TREES	CODE	QTY	BOTANICAL NAME	COMMON NAME	CONT.	CALIPER	
	MV	3	MAGNOLIA VIRGINIANA	SWEET BAY	B&B	2.5" CAL	
	SJP	4	STYRAX JAPONICUS 'PINK CHIMES'	JAPANESE PINK SNOWBELL DWARF	B&B	2.5" CAL	
SHRUBS	CODE	QTY	BOTANICAL NAME	COMMON NAME	CONT.	HEIGHT	SPACING
	CSJ	44	CAMELLIA SASANQUA 'JEAN MAY'	JEAN MAY CAMELLIA	CONT.	36" MIN.	60" o.c.
	HQA	11	HYDRANGAEA QUERCIFOLIA 'ALICE'	ALICE OAKLEAF HYDRANGAEA	CONT.	36" MIN.	72" o.c.
	IG	16	ILEX GLABRA	INKBERRY HOLLY	CONT.	24" MIN.	48" o.c.
	JCM	24	JUNIPERUS CHINENSIS 'MINT JULEP'	MINT JULEP JUNIPER	CONT.	36" MIN.	60" o.c.



1 LANDSCAPED BUFFER SECTION
L-103 SCALE: 1" = 10'-0"

SECTION

REVISIONS

2/13/2020