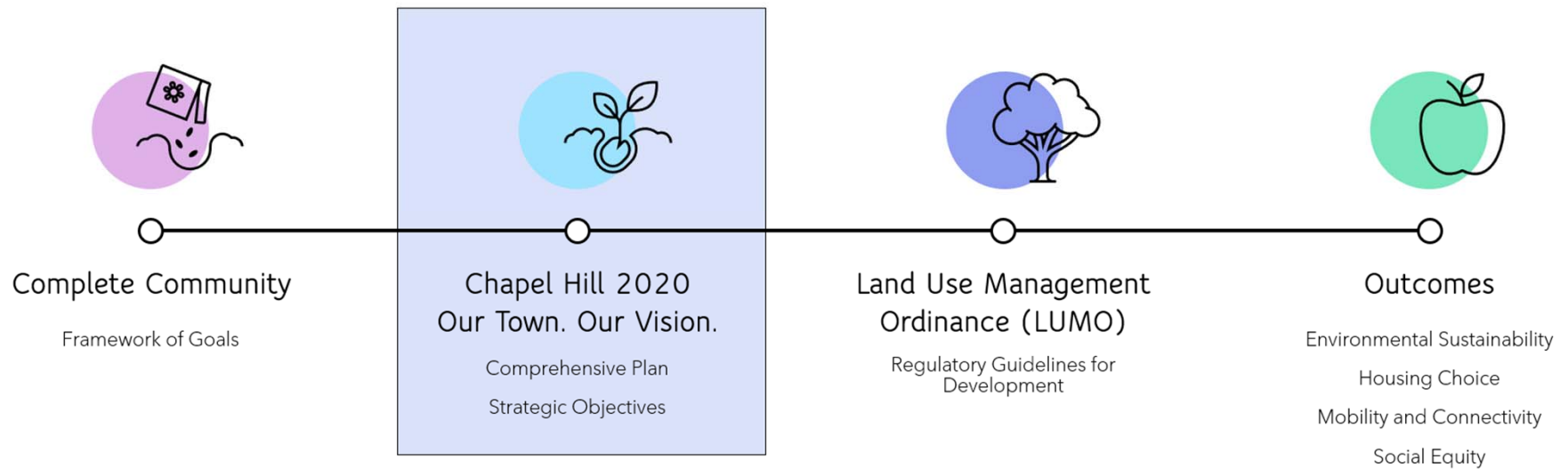


COMPLETE COMMUNITY INTEGRATION



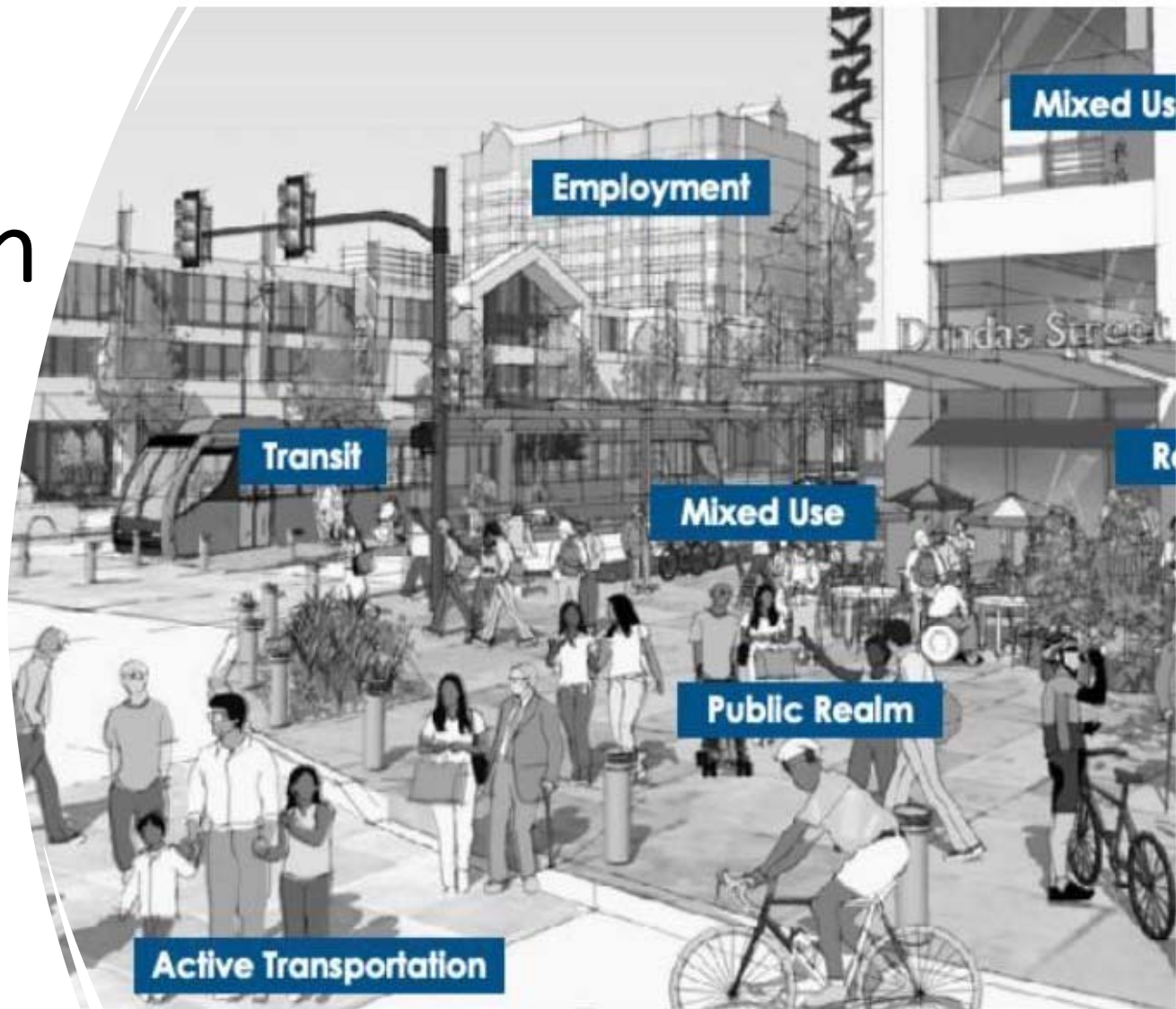


Complete Community Strategy: Amendment to Chapel Hill 2020

Town of Chapel Hill
April 19, 2023

Recommendation

- Open the hearing to update the Town's Comprehensive Plan with *Complete Community Strategy* and its recommendations;
- Receive public comments; and
- Continue the hearing to May 10, 2023.



Timeline



Spring/Fall 2022

- Consultant presents to Council and Council Committee for Economic Sustainability (CCES)
- Stakeholder interview sessions (2 rounds)
- Community Meeting



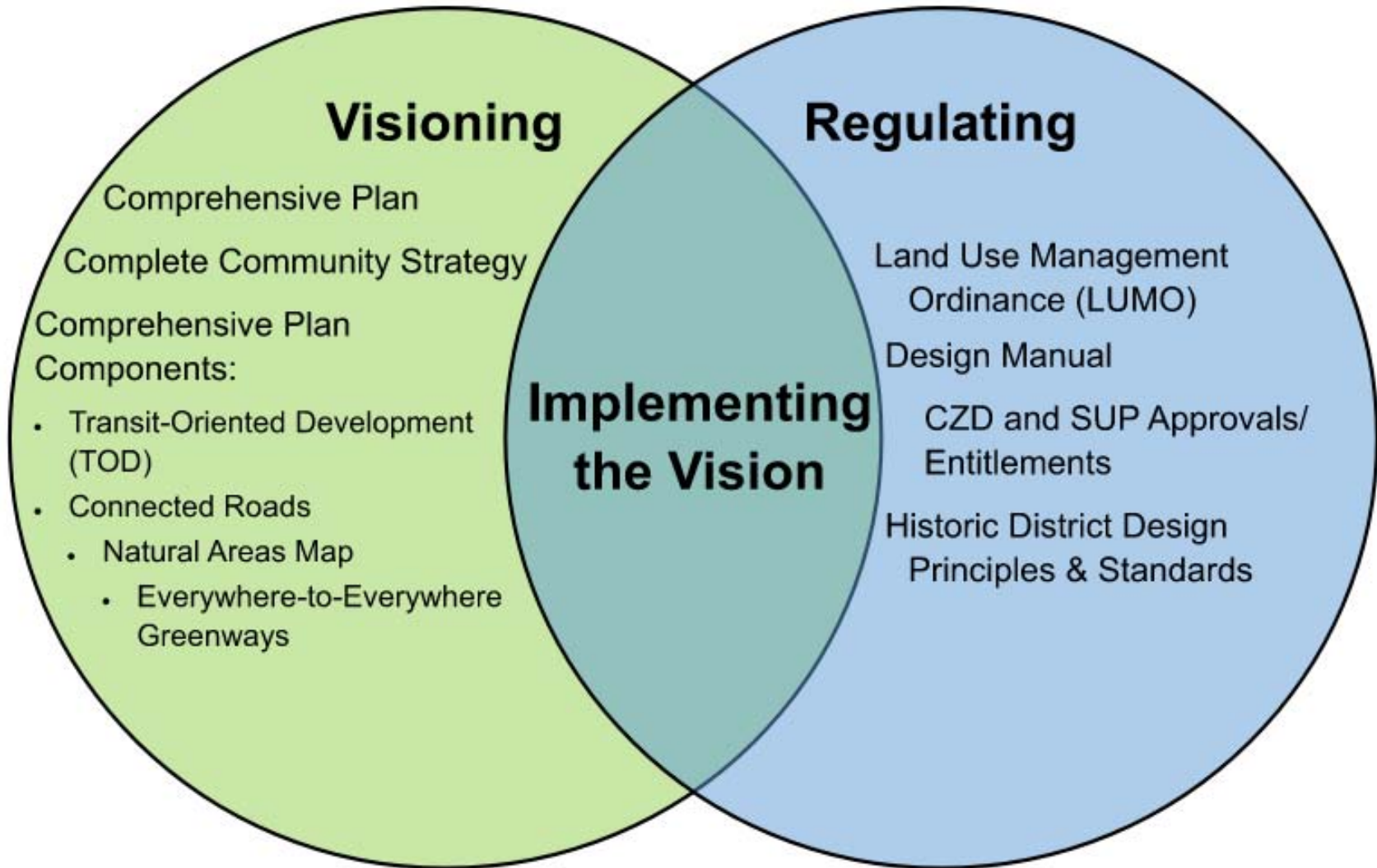
Winter 2022-2023

- Consultant presents to Council and Council Committee for Economic Sustainability (CCES)
- December 7, 2022 Council adopt Complete Community Framework



Spring 2023

- April 4, 2023 Planning Commission Recommendation
- April 19, 2023 Council Hearing
- May 10, 2023 Council Tentative Action



Chapel Hill 2020 Comprehensive Plan



Complete Community Strategy



Components of the Comprehensive Plan

Adopted Additions to the Comprehensive Plan:

- Parks Comprehensive Plan
- Greenways Master Plan
- Central West Small Area Plan
- Chapel Hill Bike Plan
- Stormwater Management Master Plan
- Cultural Arts Plan
- West Rosemary Street Development Guide
- Mobility & Connectivity Plan
- Future Land Use Map (FLUM)
- Climate Action Plan & Response Plan

Proposed Updates to the Comprehensive Plan:

- Transit-Oriented Development (TOD)
- Connected Roads
- Natural Areas Map
- Everywhere-to-Everywhere Greenways

Principles of Placemaking Elements of Complete Communities for Chapel Hill



Complete Community Strategy



Comprehensive Plan Elements

Mobility Plan
Parks Plan
Future Land Use Map



Comprehensive Plan Elements

Mobility Plan
Parks Plan
Future Land Use Map



Future Land Use Map

Comprehensive Plan Elements

Mobility Plan
Parks Plan
Future Land Use Map



Future Land Use Map

Climate Action Plan
Mobility Plan
Future Land Use Map

Comprehensive Plan Elements

Mobility Plan
Parks Plan
Future Land Use Map

Cultural Arts Plan
Parks Plan
Future Land Use Map



Future Land Use Map

Climate Action Plan
Mobility Plan
Future Land Use Map

Comprehensive Plan Elements

Mobility Plan
Parks Plan
Future Land Use Map

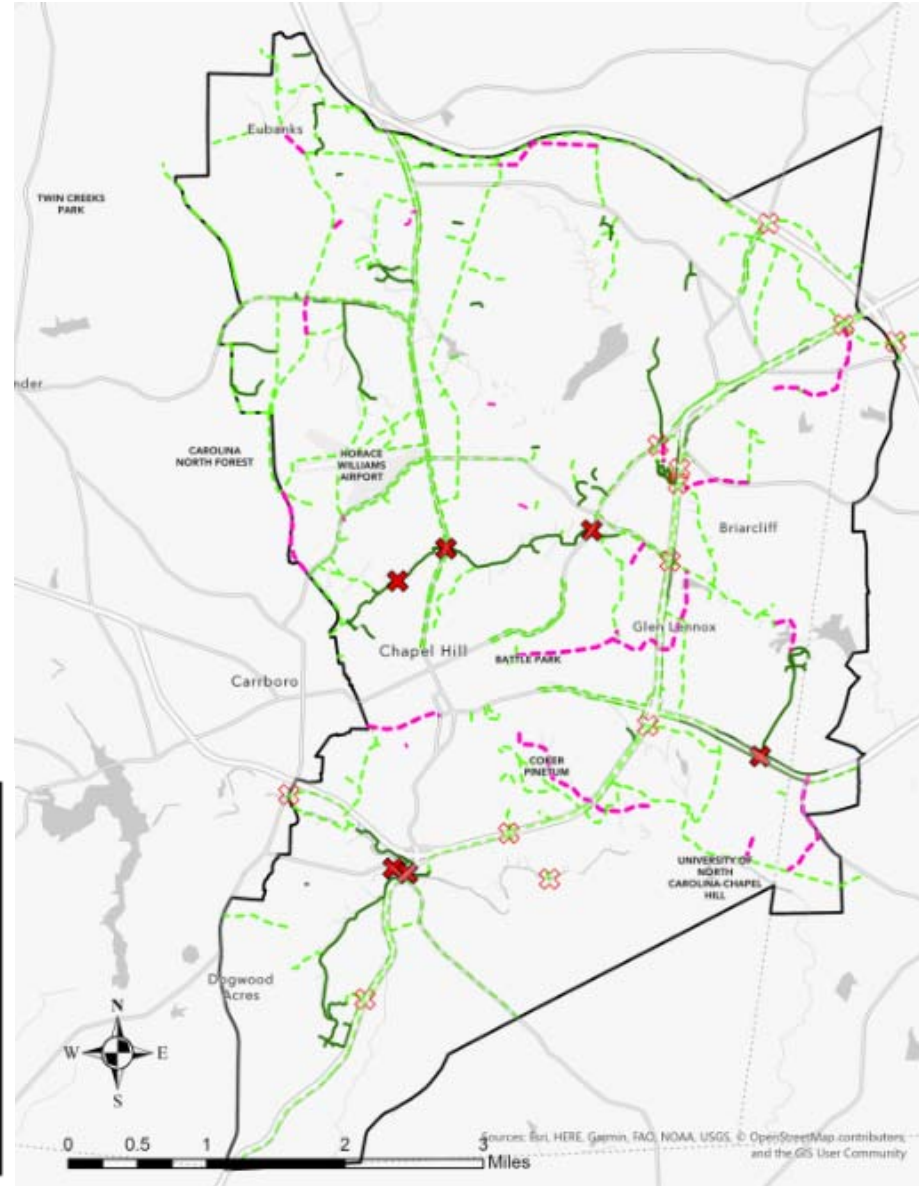
Cultural Arts Plan
Parks Plan
Future Land Use Map



Future Land Use Map

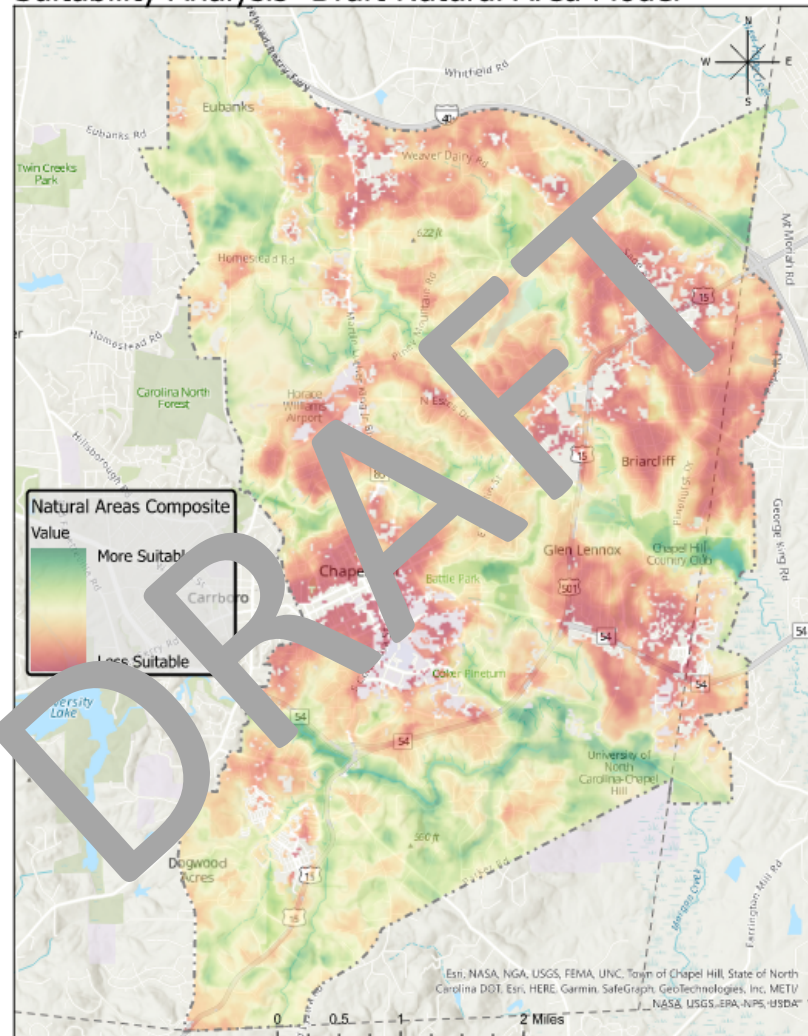
Climate Action Plan
Mobility Plan
Future Land Use Map

Everywhere to Everywhere Greenways



Natural Areas Map

Suitability Analysis- Draft Natural Area Model



Recommendation

- Open the hearing to update the Town's Comprehensive Plan with *Complete Community Strategy* and its recommendations;
- Receive public comments; and
- Continue the hearing to May 10, 2023.



Next Steps

- Update the Town's Comprehensive Plan to include:
 - ✓ Complete Community Framework as the guiding vision
 - ✓ Everywhere to Everywhere Greenways Plan; and
 - ✓ Natural Areas Map.
- Initiate Pilot Projects:
 - ✓ Everywhere to Everywhere Greenway by pursuing federal funding and providing updates to the Council on resource needs for implementation.
 - ✓ Midtown (short-term); and
 - ✓ Parkline (long-term).
- Develop a process for regular reporting by staff on implementation status so the Council and community can track progress.