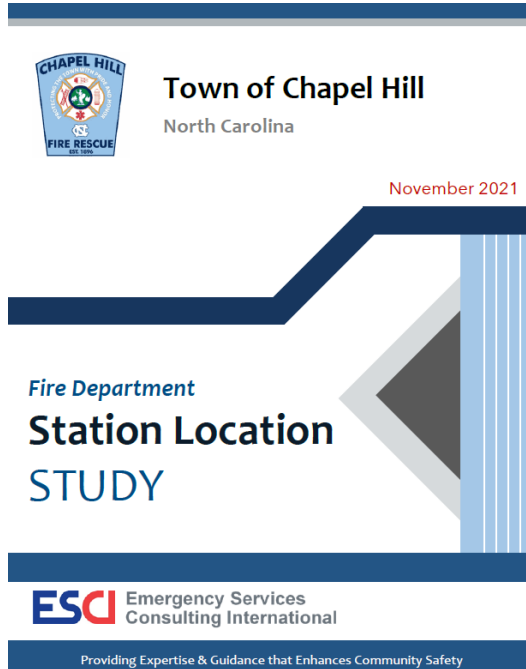


Chapel Hill Fire Department



Station & Facility Replacement Master Planning Discussion

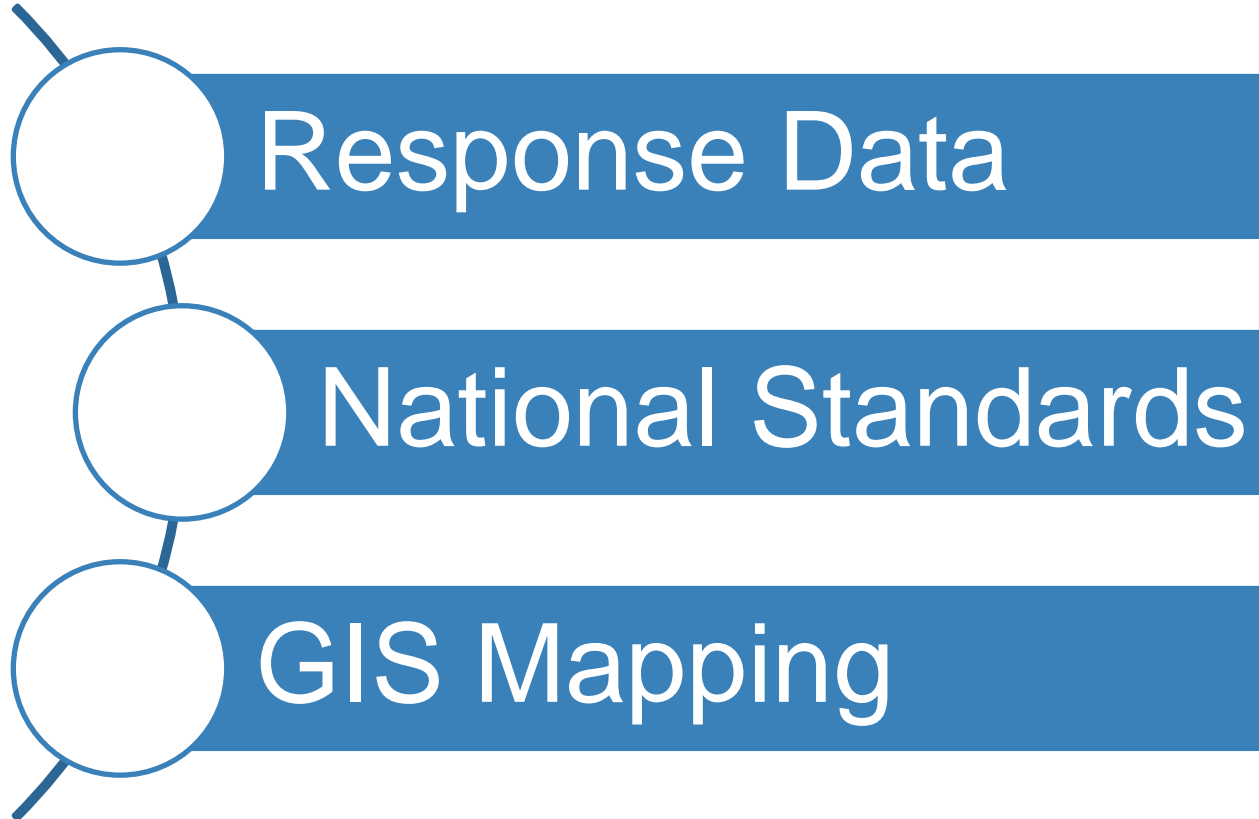
Objectives of the Study:

Determine Station, Staffing and Apparatus Needs

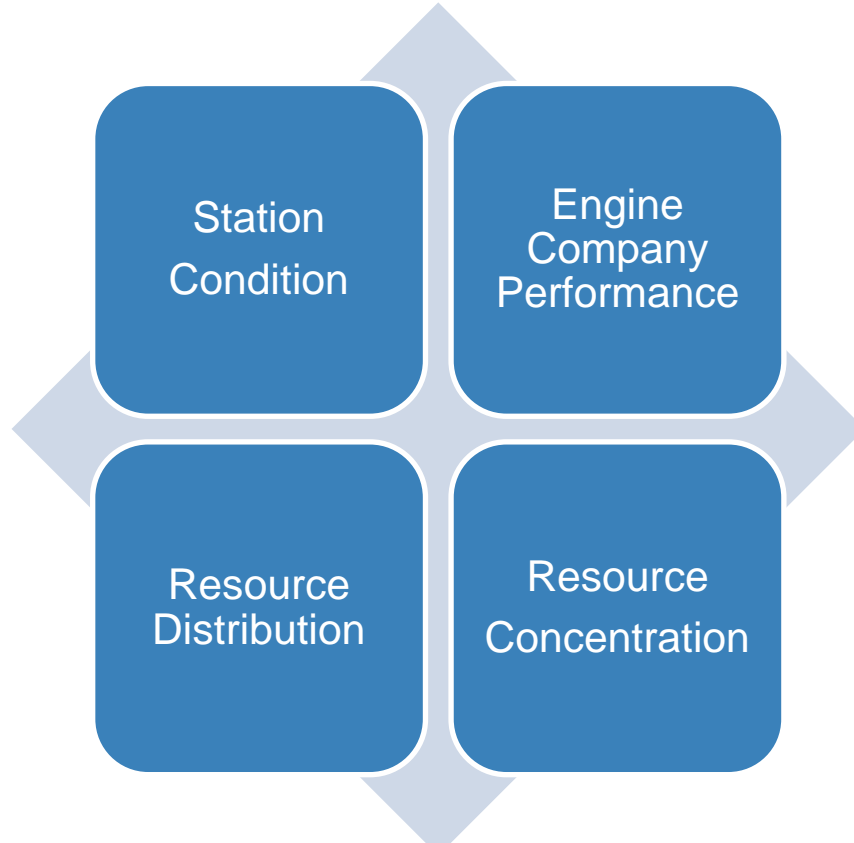
Evaluate Placement of Stations

Plan for future growth and development of Chapel Hill

Methodology



Findings



Rating Methodology

Excellent	“Like New”; meets current & future needs
Good	“Minor Wear”; meets intended purpose relative to current needs
Fair	“Structurally Sound”; mechanical systems function but may need upgrade; may not meet purpose based on current needs
Poor	“Advanced Deterioration”; problematic age-related maintenance; not well suited for current or future purpose

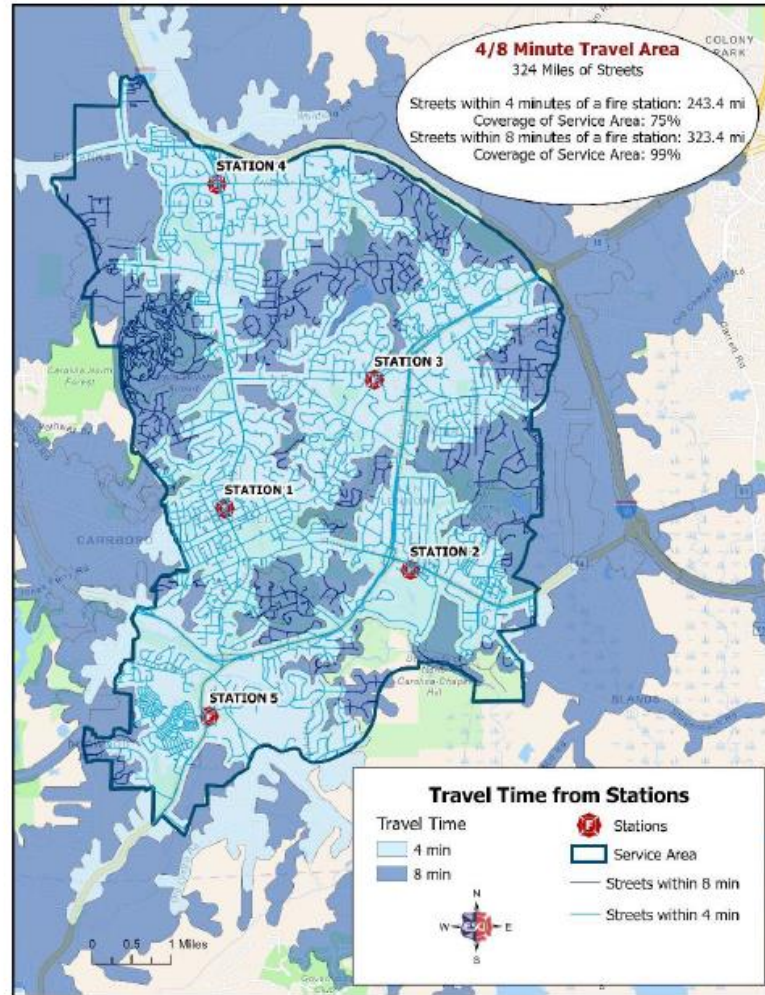
Findings: Station Condition

CHFD Station	Age	Rated Condition	Number of Apparatus	Minimum Staffing
1	58	Poor	2	4
2	3	Excellent	3*	8*
3	51	Poor	2	4
4	39	Poor	1	3
5	20	Good	1	3

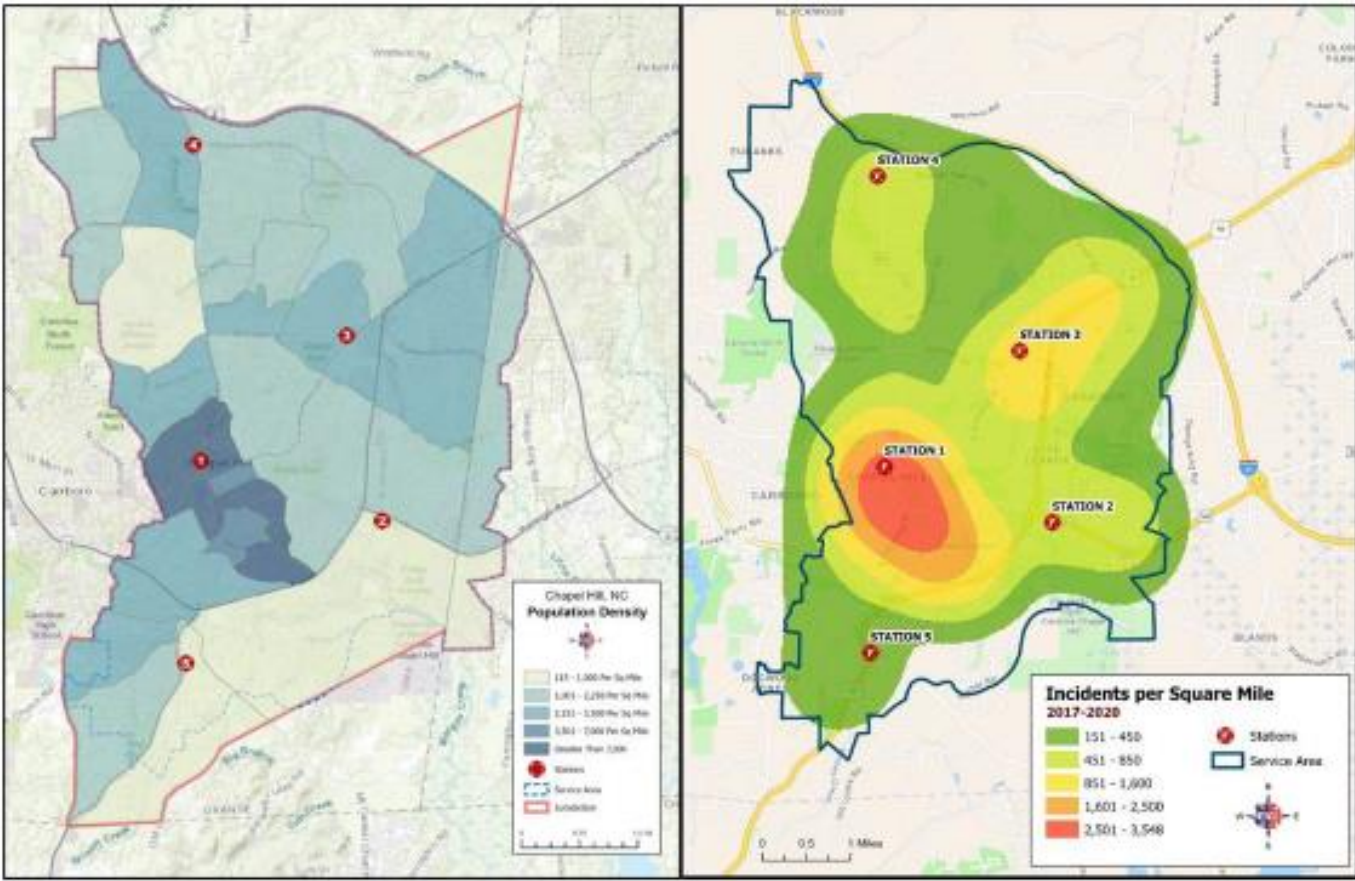
* Facility is joint operated with Orange County EMS

Findings: Resource Distribution

Figure 31: Chapel Hill Predicted 4 and 8-Minute Travel Times, NFPA 1710



Findings: Population & Incident Density



Recommendations

Figure 70: Measuring System Effectiveness



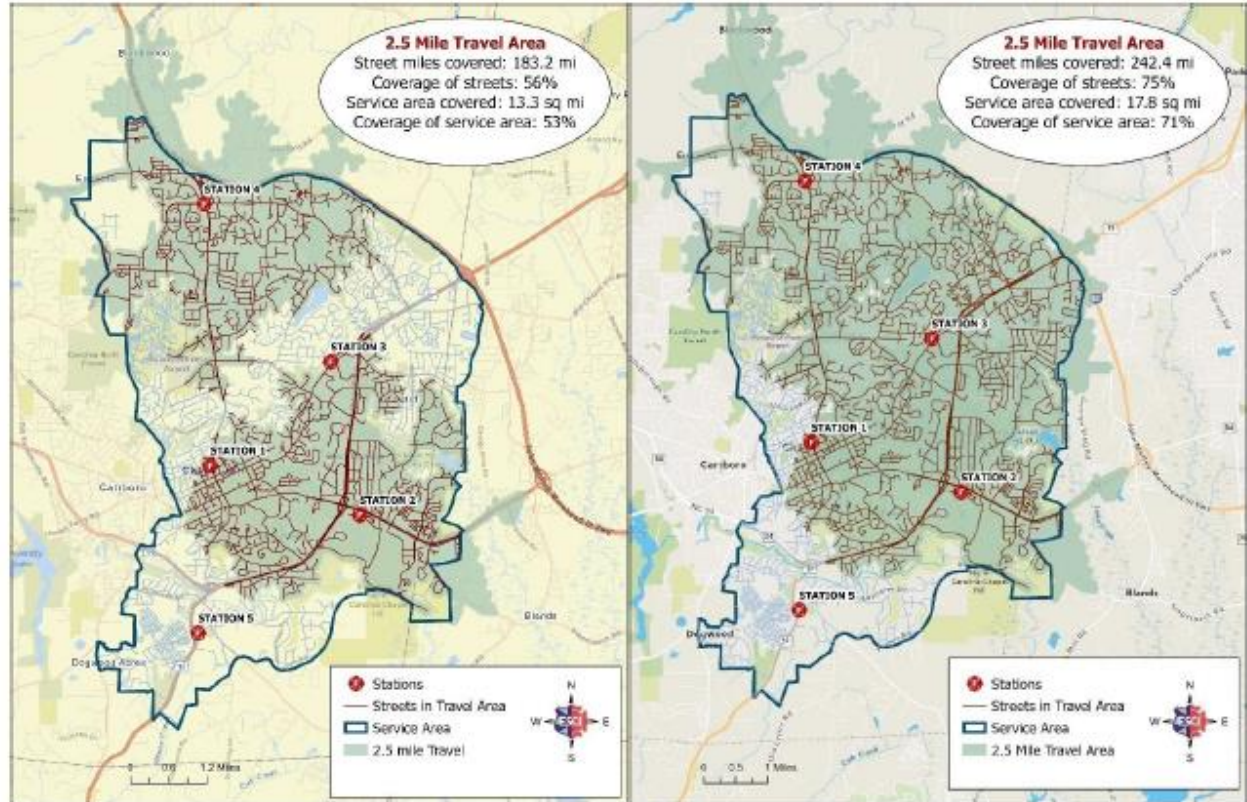
Recommendations

- **Long-Range Station Replacement Plan**
- **Additional Ladder Company**
- **Long-Range Apparatus Replacement Plan**
- **New Training Facility**

Recommendations

Additional Ladder Company Station 3

Figure 88: Proposed ISO 2.5 Mile Ladder Company Service Area Coverage Fire Station 3



CHFD Apparatus Replacement Plan

Apparatus	Year TOCH Fleet Plan Indicates Replacement	Year apparatus Was Ordered	Year Apparatus Would Be Placed In Service
Engine 33	2019	2021	2023
Engine 32	2021	2022	2023
Engine 35	2022	2023*	2025
Truck 74	2024	2024*	2024
Engine 31	2029	2027	2029
Truck 72	2030	2028	2030
Truck 73*	New Apparatus	2023**	2025

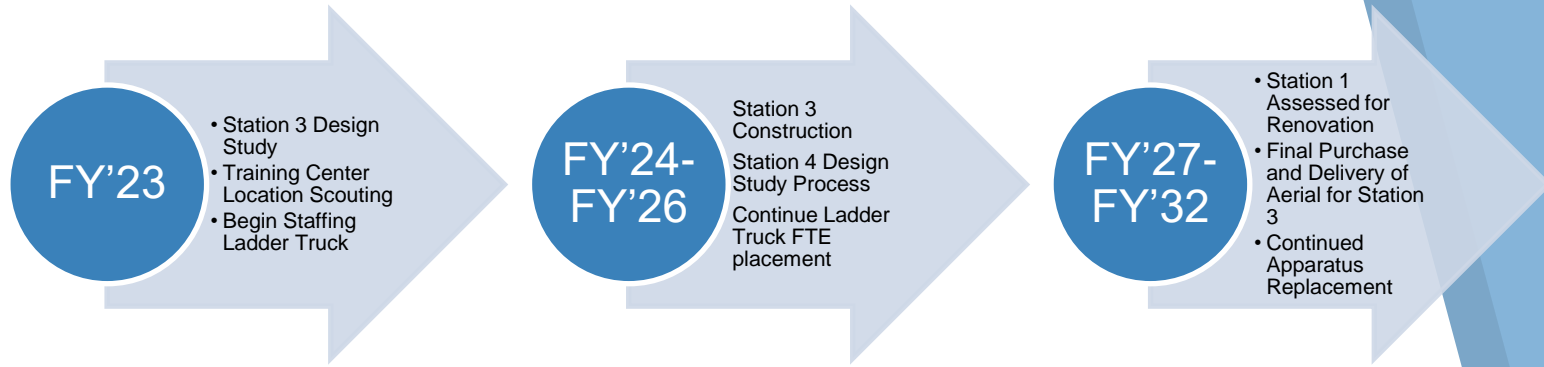
* Anticipated Budget Request for FY24, ** To be ordered in conjunction with a new fire station 3

Recommendations

CONSTRUCT NEW TRAINING FACILITY



What's Next



What's Next

	FY23 (Current)	FY24	FY25	FY26	FY27	FY28
Staffing	3 FTEs – Operations (unfunded)	9 FTEs - Operations	9 FTEs - Operations	6 FTEs - Operations	6 FTEs - Operations	
	1 FTE – Life Safety (unfunded)	1 FTE - Life Safety	1 FTE- Training	1 FTE - Life Safety		
Stations	Station 3 - Design (unfunded)	Station 3 - Design	Station 3 - Construction	Station 3 - Construction		
	Training Center - Design (unfunded)	Training Center - Design				Training Center - Construction
		Station 4 - Design	Station 4 - Design	Station 4 - Construction	Station 4 - Construction	
				Station 1 - Design	Station 1 - Design	Station 1 - Construction
Fleet		Engine 35			Engine 31	
		Tower 73	Truck 74*			
Equipment		Radios				
			Rescue Tools	Rescue Tools	Rescue Tools	
				Gas Meters		

Requests of Council:

Support for Town Management, CHF D Administration, and other stakeholders to continue working together to lay out a master plan for Chapel Hill Fire Department facility design and build.

Engage in discussions with Town Management, Fire Department Administration, and Business Management to identify funding for design and construction phases of the overall Fire Department Facilities Replacement Master Plan, beginning with Fire Station 3.

Support ongoing collaboration with Orange County Emergency Services to help with funding and to house Emergency Medical Services response resources at redeveloped fire stations.



Questions?

- Have we provided enough information for Council to understand the Fire Departments capital needs?
- How can we better align our vision with Council's vision of maintaining public safety?
- What other information can we provide so that you can make confident budget decisions as we move forward together?

