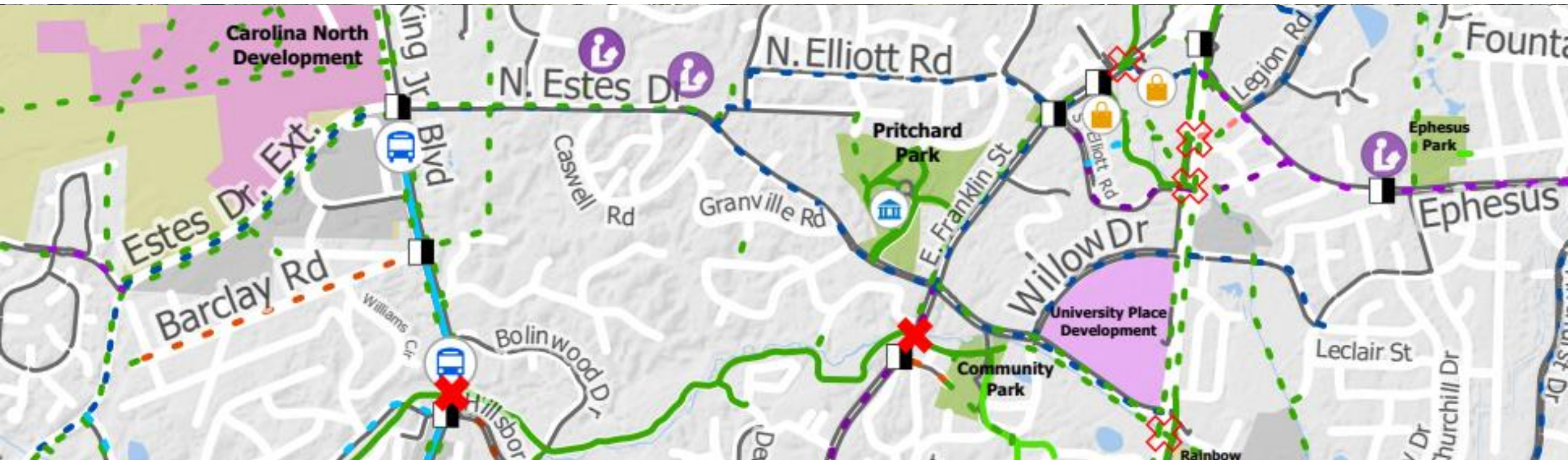




# TRANSPORTATION AND CONNECTIVITY ADVISORY BOARD

Mobility Plan Amendment

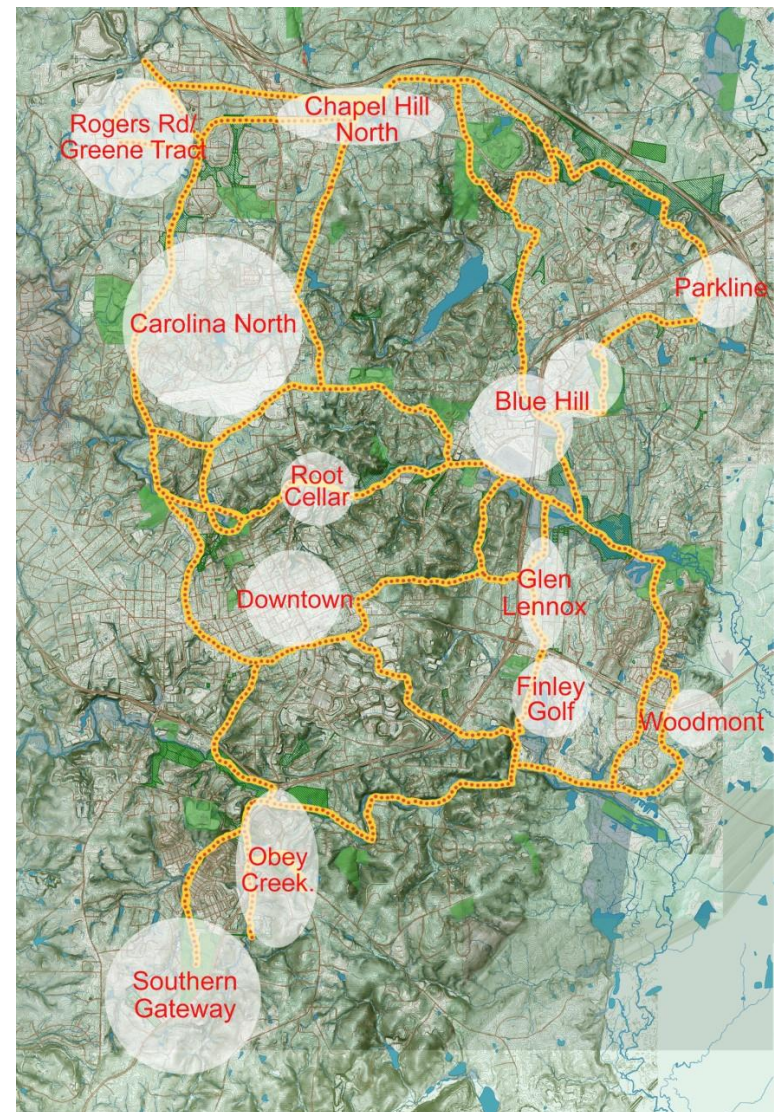
3.28.2023





# Why Update the Mobility Plan?

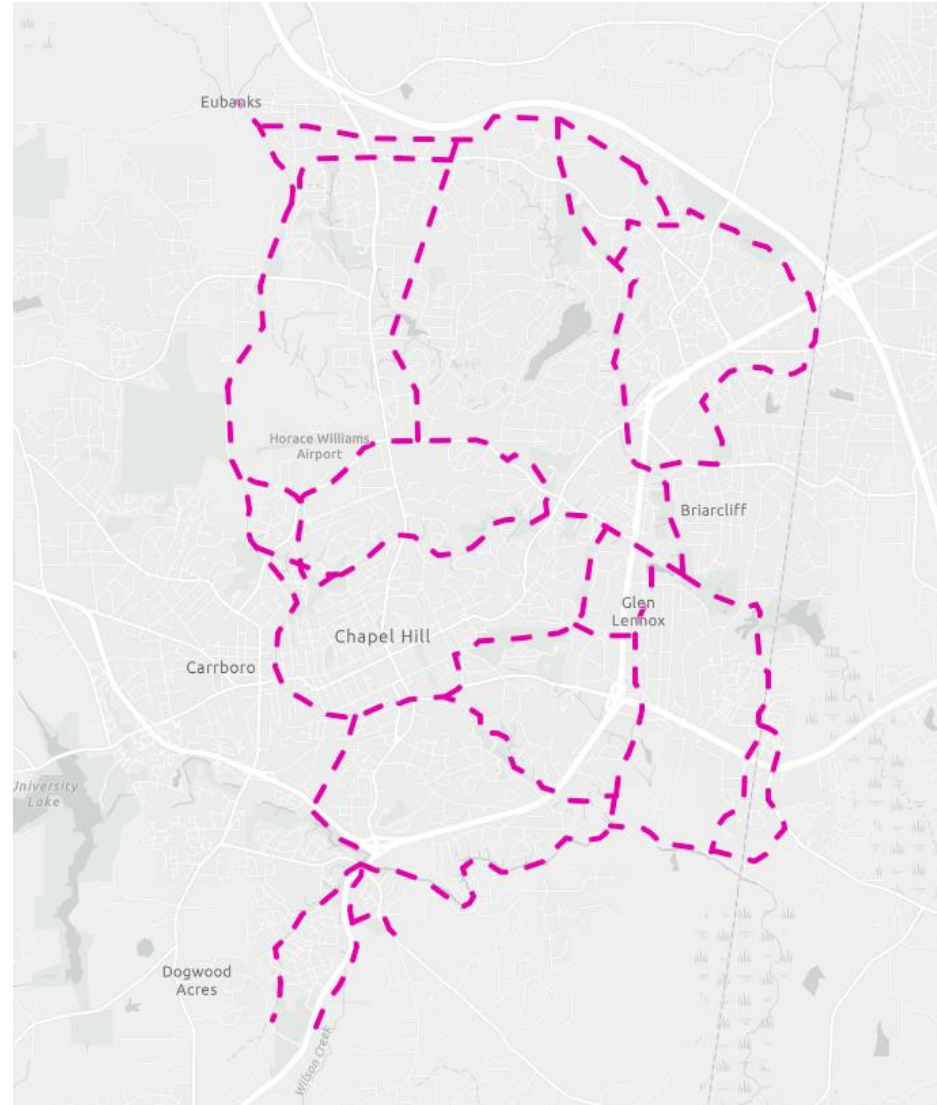
- Complete Community effort highlighted need for “Everywhere to Everywhere Greenways”
- Consultant had map of potential greenways and growth areas
- Want to translate desire for connected greenways and mapped facilities





# Process

- **Everywhere to Everywhere Greenways Map**
- Starting point for examining new greenway network and building on it

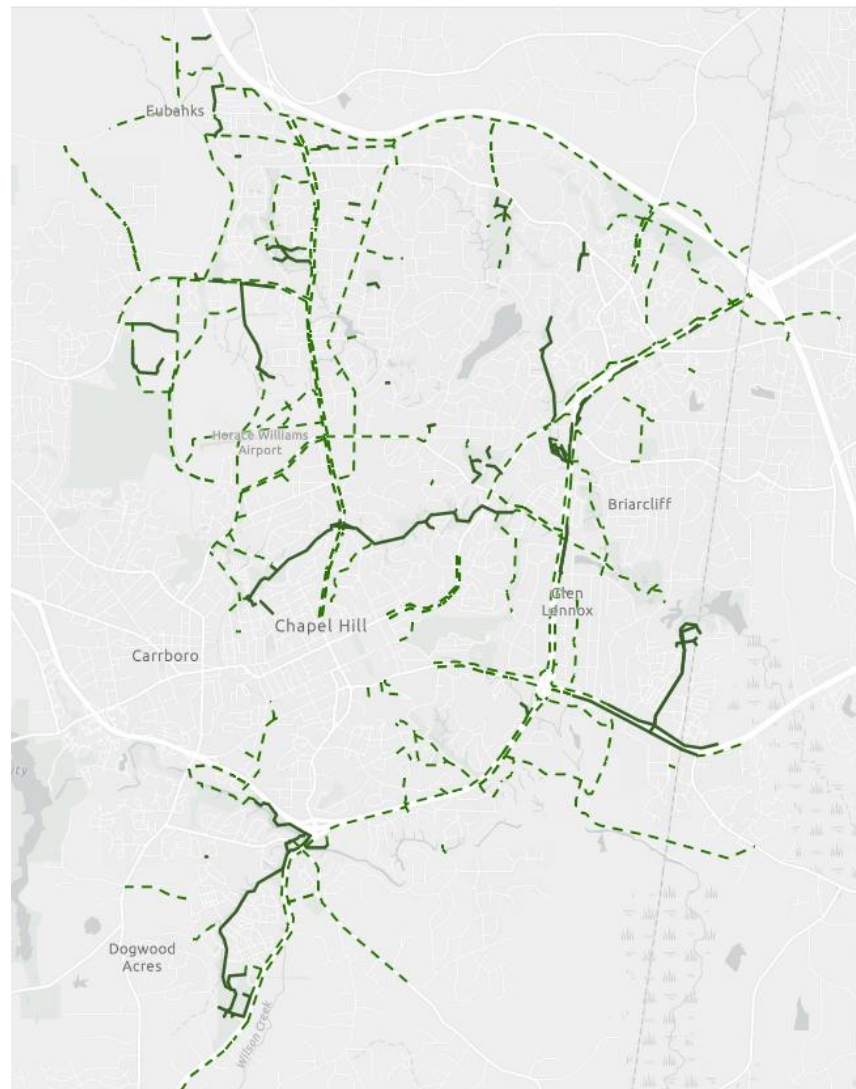


|                   |
|-------------------|
| <u>Agenda</u>     |
| What is SPOT?     |
| <b>Schedule</b>   |
| Proposed Projects |
| Next Steps        |



# Process

- **Mobility Plan Greenways Map**
- Existing plan for greenways and multi-use paths in Chapel Hill



## Agenda

What is SPOT?

## **Schedule**

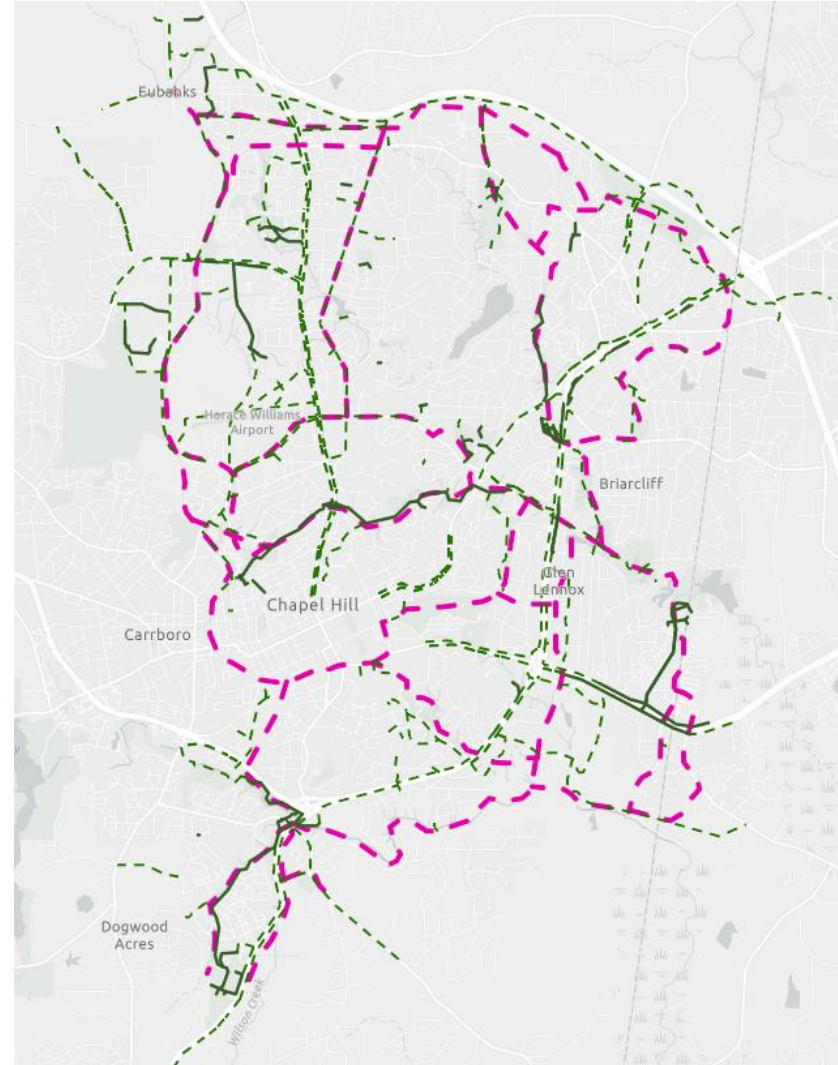
Proposed Projects

Next Steps



# Process

- **Mobility Plan Greenways Map + Everywhere to Everywhere Map**
- Shows overlap and duplication and allows staff to isolate newer segments for analysis

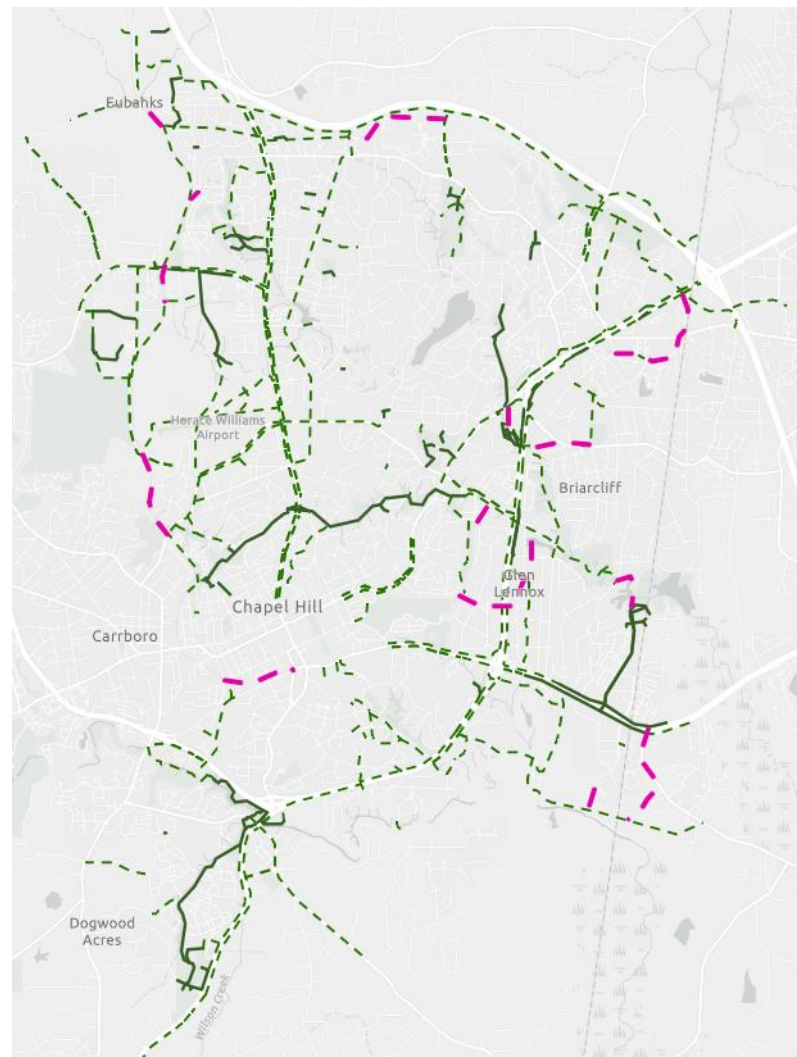


|                   |
|-------------------|
| <u>Agenda</u>     |
| What is SPOT?     |
| <b>Schedule</b>   |
| Proposed Projects |
| Next Steps        |



# Process

- **Amended Mobility Plan Map**
- Adds several segments of new greenway and some modifications to the Mobility Plan



## Agenda

What is SPOT?

## **Schedule**

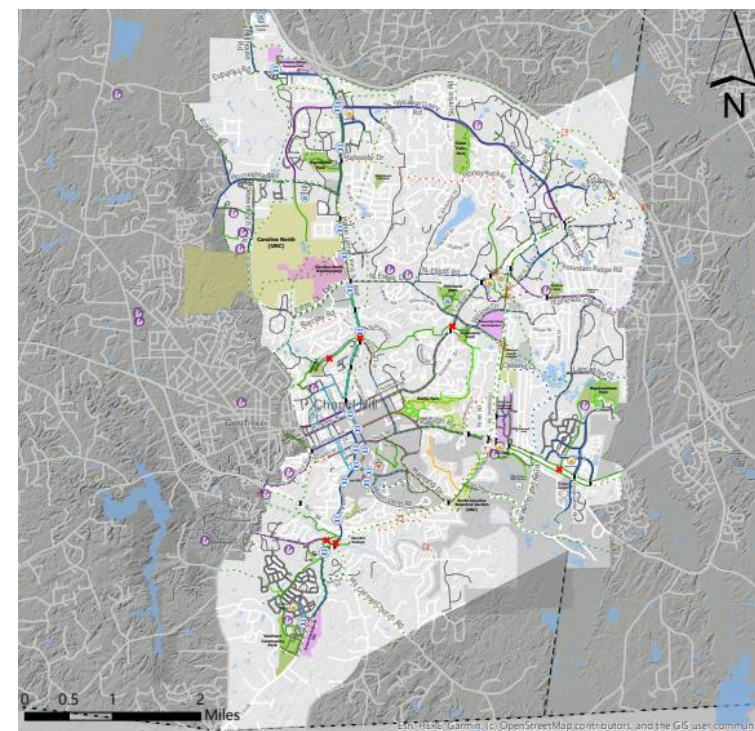
Proposed Projects

Next Steps



# Next Steps

- Bring to Planning Commission next week
- Look for Council adoption in May as part of broader Complete Community effort
- Adopt as part of revised Mobility Plan and use to determine compliance with the Town's Comprehensive Plan



Long-Term Network Facilities Map  
Originally adopted 10/25/2017  
Amended 10/28/2020

|                   | EXISTING  | PROPOSED  |
|-------------------|---|---|
| <b>BICYCLE</b>    | <ul style="list-style-type: none"> <li>Bike Lane</li> <li>Buffered/Protected Bike Lane</li> <li>Sharrows</li> <li>Signed Bike Route</li> <li>On-Street Greenway Connector</li> <li>Cycle Track</li> <li>Bike Climbing Lane</li> </ul> | <ul style="list-style-type: none"> <li>Bike Lane</li> <li>Buffered/Protected Bike Lane</li> <li>Sharrows</li> <li>Signed Bike Route</li> <li>On-Street Greenway Connector</li> <li>Cycle Track</li> <li>Bike Climbing Lane</li> </ul> |
| <b>MULTI-USE</b>  | <ul style="list-style-type: none"> <li>Multi-Use Path/Greenway</li> <li>Unpaved Greenway</li> <li>ADA Trail</li> </ul>  | <ul style="list-style-type: none"> <li>Multi-Use Path/Greenway</li> <li>Unpaved Greenway</li> <li>ADA Trail</li> </ul>  |
| <b>PEDESTRIAN</b> | <ul style="list-style-type: none"> <li>Sidewalk</li> </ul>  | <ul style="list-style-type: none"> <li>Sidewalk</li> </ul>  |

**TOWN OF CHAPEL HILL**  
Mobility & Connectivity Plan