

E LONGVIEW ST

MARTIN LUTHER KING BLVD

cline

125 N. Harrington St.
Raleigh, NC 27603
919 / 833-6413
ClineDesignAssoc.com

LCD ACQUISITIONS, LLC
THE PACES
701 MARTIN LUTHER KING JR BOULEVARD
CHAPEL HILL, NC 27516

NOT FOR
CONSTRUCTION

FOR
REFERENCE
ONLY

PROJECT:	024258
DATE:	03.11.2026
REVISIONS:	DATE

*P# = PERMIT, R# = RFL, # = REVISION
DRAWN BY: Author
CHECKED BY: Checker

ARCHITECTURAL SITE
PLAN

SITE PLAN 1



CDC-0



cline

125 N. Harrington St.
Raleigh, NC 27603
919 / 833-6413
ClineDesignAssoc.com

LCD ACQUISITIONS, LLC
THE PACES
701 MARTIN LUTHER KING JR BOULEVARD
CHAPEL HILL, NC 27516

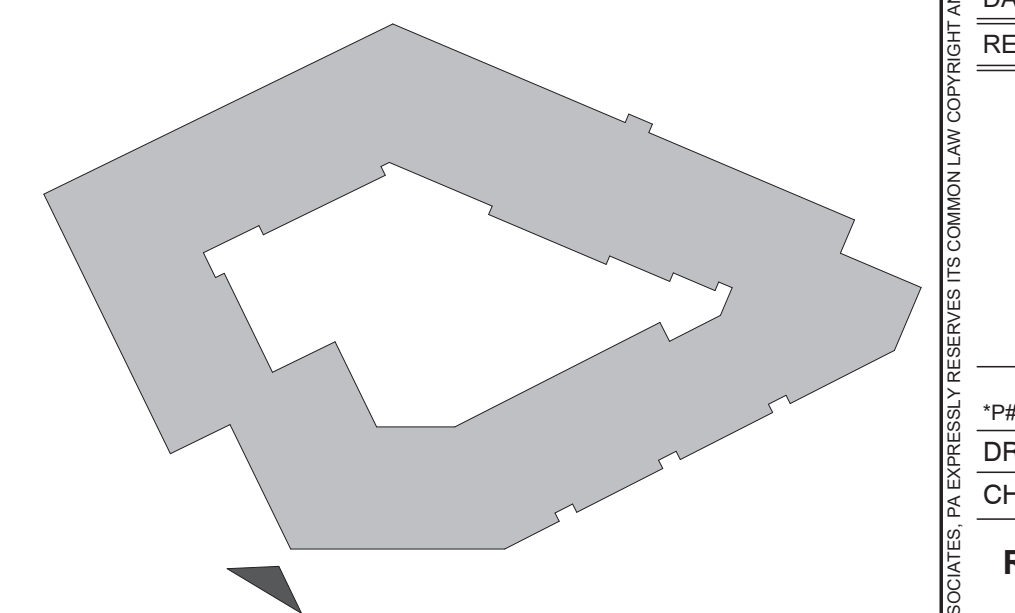
NOT FOR
CONSTRUCTION

FOR
REFERENCE
ONLY

PROJECT:	024258
DATE:	03.11.2026
REVISIONS:	DATE

*Di = PERMIT, R# = RFL, # = REVISION
DRAWN BY: Author
CHECKED BY: Checker

RENDER



SOUTHEAST ELEVATION (MLK BLVD) 1

CDC-1

© 2025 Cline Design Associates, Inc. All rights reserved. This document is the property of Cline Design Associates, Inc. and is not to be reproduced, stored in a retrieval system, or transmitted in any form or by any means, electronic, mechanical, photocopying, recording, or by any information storage and retrieval system, without the prior written permission of Cline Design Associates, Inc.



cline

125 N. Harrington St.
Raleigh, NC 27603
919 / 833-6413
ClineDesignAssoc.com

LCD ACQUISITIONS, LLC
THE PACES
701 MARTIN LUTHER KING JR BOULEVARD
CHAPEL HILL, NC 27516

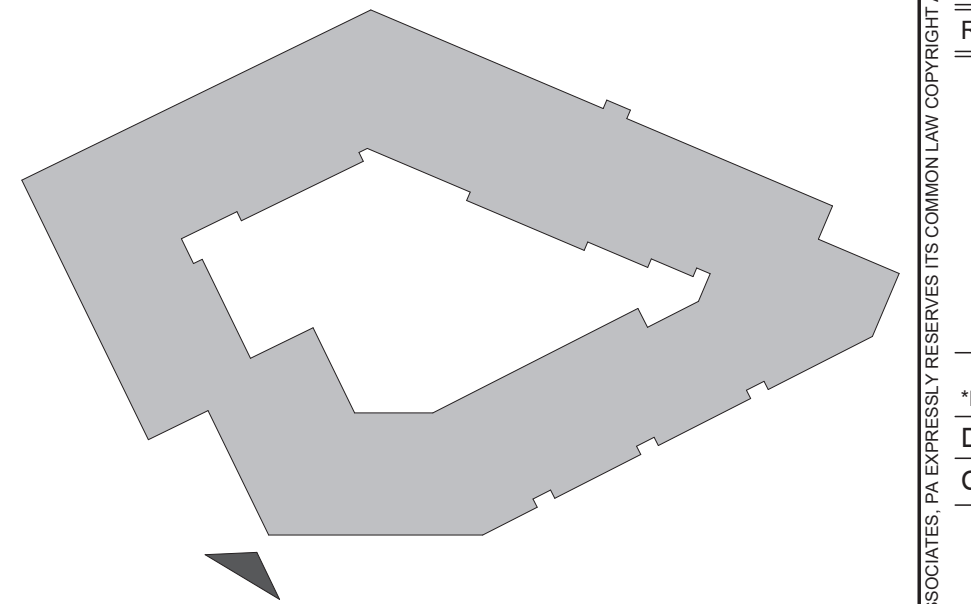
NOT FOR
CONSTRUCTION

FOR
REFERENCE
ONLY

PROJECT:	024258
DATE:	03.11.2026
REVISIONS:	DATE

*P# = PERMIT, R# = RFL, # = REVISION
DRAWN BY: Author
CHECKED BY: Checker

RENDER



SOUTHEAST ELEVATION (MLK BLVD) 1

CDC-2

P:\020258_131_01_P1M - Architecture\0202580201 - The Paces\The Paces - 04/27/24

© 2024 CLINE DESIGN ASSOCIATION, LLC. ALL RIGHTS RESERVED. THIS DOCUMENT IS THE PROPERTY OF CLINE DESIGN ASSOCIATION, LLC. NO PART OF THIS DOCUMENT MAY BE REPRODUCED OR TRANSMITTED IN ANY FORM OR BY ANY MEANS, ELECTRONIC OR MECHANICAL, WITHOUT THE EXPRESS WRITTEN PERMISSION OF CLINE DESIGN ASSOCIATION, LLC.



cline

125 N. Harrington St.
Raleigh, NC 27603
919 / 833-6413
ClineDesignAssoc.com

LCD ACQUISITIONS, LLC
THE PACES
701 MARTIN LUTHER KING JR BOULEVARD
CHAPEL HILL, NC 27516

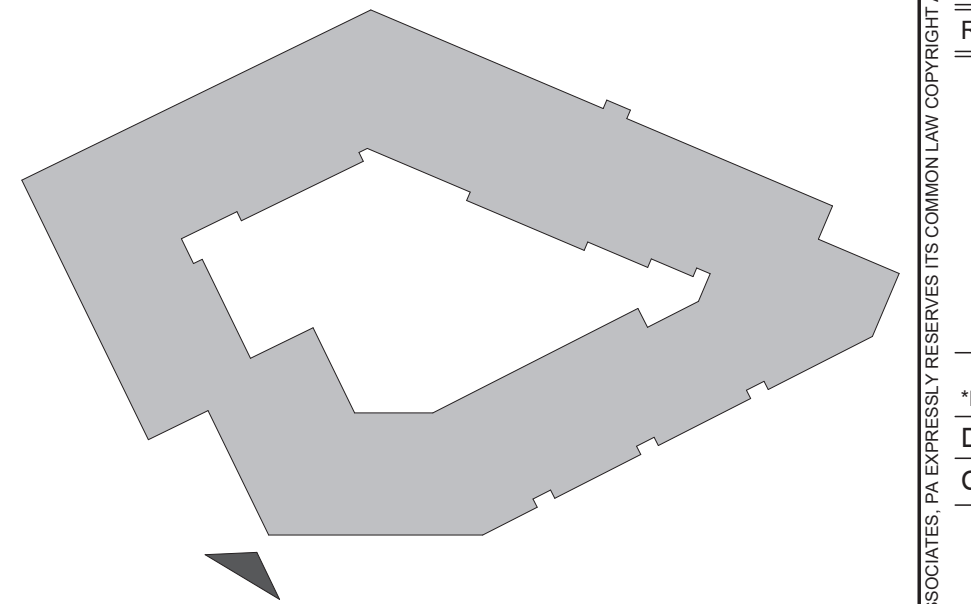
NOT FOR CONSTRUCTION

FOR REFERENCE ONLY

PROJECT:	024258
DATE:	03.11.2026
REVISIONS:	DATE

*P# = PERMIT, R# = RFL, # = REVISION
DRAWN BY: Author
CHECKED BY: Checker

RENDER



SOUTHEAST ELEVATION (MLK BLVD) 1

CDC-3

© 2025 LCD ACQUISITIONS, LLC. ALL RIGHTS RESERVED. THIS DOCUMENT IS THE PROPERTY OF LCD ACQUISITIONS, LLC. NO PART OF THIS DOCUMENT MAY BE REPRODUCED OR TRANSMITTED IN ANY FORM OR BY ANY MEANS, ELECTRONIC OR MECHANICAL, WITHOUT PERMISSION IN WRITING FROM LCD ACQUISITIONS, LLC.



cline

125 N. Harrington St.
Raleigh, NC 27603
919 / 833-6413
ClineDesignAssoc.com

LCD ACQUISITIONS, LLC
THE PACES
701 MARTIN LUTHER KING JR BOULEVARD
CHAPEL HILL, NC 27516

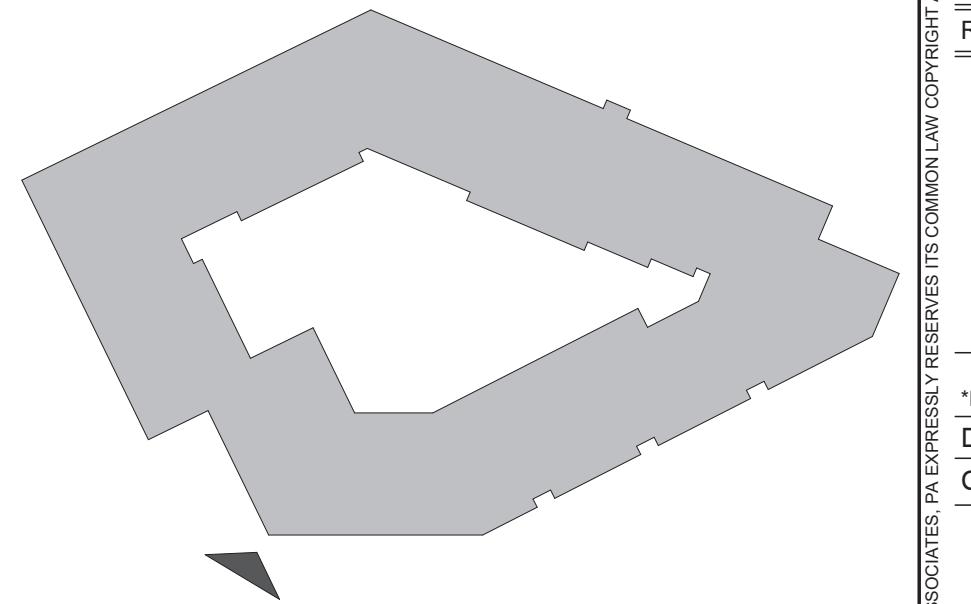
NOT FOR CONSTRUCTION

FOR REFERENCE ONLY

PROJECT:	024258
DATE:	03.11.2026
REVISIONS:	DATE

*P# = PERMIT, R# = RFL, # = REVISION
DRAWN BY: Author
CHECKED BY: Checker

RENDER



SOUTHEAST ELEVATION (MLK BLVD)

NOT FOR
CONSTRUCTION

FOR
REFERENCE
ONLY

PROJECT:	024258
DATE:	03.11.2026
REVISIONS:	DATE

*P# = PERMIT, R# = RFL, # = REVISION
DRAWN BY: Author
CHECKED BY: Checker

**BASEMENT - P3
OVERALL PLAN**



NOT FOR CONSTRUCTION

FOR REFERENCE ONLY

PROJECT:	024258
DATE:	03.11.2026
REVISIONS:	DATE
ZCP SUBMISSION	01.26.26

*DR = PERMIT, RA = RFI, # = REVISION
DRAWN BY:
CHECKED BY:

GROUND FLOOR - P2
OVERALL PLAN



MARTIN LUTHER KING JR BLVD

E LONGVIEW ST

03/11/2026 11:51 AM
 Autodesk AutoCAD 2026
 ThePacesThePaces.dwg

© 2026 CLINE DESIGN ASSOCIATES, ALL RIGHTS RESERVED. THIS DOCUMENT IS THE PROPERTY OF CLINE DESIGN ASSOCIATES. NO PART OF THIS DOCUMENT IS TO BE REPRODUCED, COPIED, OR TRANSMITTED IN ANY FORM OR BY ANY MEANS, ELECTRONIC OR MECHANICAL, WITHOUT THE EXPRESS WRITTEN PERMISSION AND CONSENT OF CLINE DESIGN ASSOCIATES, INC.



NOT FOR CONSTRUCTION

FOR REFERENCE ONLY

PROJECT:	024258
DATE:	03.11.2026
REVISIONS:	DATE
ZCP SUBMISSION	01.26.26

*DR = PERMIT, RR = RFI, # = REVISION
DRAWN BY: KMK, BMB
CHECKED BY: BDJ

SECOND FLOOR - P1
OVERALL PLAN

ARCHITECT: CLINE DESIGN ASSOCIATION, INC. 125 N. HARRINGTON ST., RALEIGH, NC 27603
 PROJECT: THE PACES, 701 MARTIN LUTHER KING JR. BLVD., CHAPEL HILL, NC 27516
 DATE: 03/11/2026
 DRAWN BY: KMK, BMB
 CHECKED BY: BDJ
 PROJECT NO: 024258



ELONGVIEW ST

MARTIN LUTHER KING JR BLVD

NOT FOR CONSTRUCTION

FOR REFERENCE ONLY

PROJECT:	024258
DATE:	03.11.2026
REVISIONS:	DATE

*DR = PERMIT, RR = RFI, # = REVISION
DRAWN BY: KMK, BMB
CHECKED BY: BDJ

THIRD FLOOR OVERALL PLAN

03/11/2026 3:51:05 PM Autodesk AutoCAD 2026 ThePacesThePaces.dwg

CONTRACTOR SHALL VERIFY ALL DIMENSIONS AND LOCATIONS OF ALL EXISTING AND PROPOSED ELEMENTS IN THESE PLANS. THESE PLANS ARE NOT TO BE ENLARGED, REDUCED, COPIED, REPRODUCED, OR OTHERWISE USED IN ANY MANNER WITHOUT THE EXPRESS WRITTEN PERMISSION AND CONSENT OF CLINE DESIGN ASSOCIATES, P.A.



NOT FOR CONSTRUCTION

FOR REFERENCE ONLY

PROJECT:	024258
DATE:	03.11.2026
REVISIONS:	DATE

*DR = PERMIT, RR = RFL, # = REVISION
DRAWN BY: Author
CHECKED BY: Checker

FOURTH TO SEVENTH FLOOR OVERALL PLAN (TYPICAL)

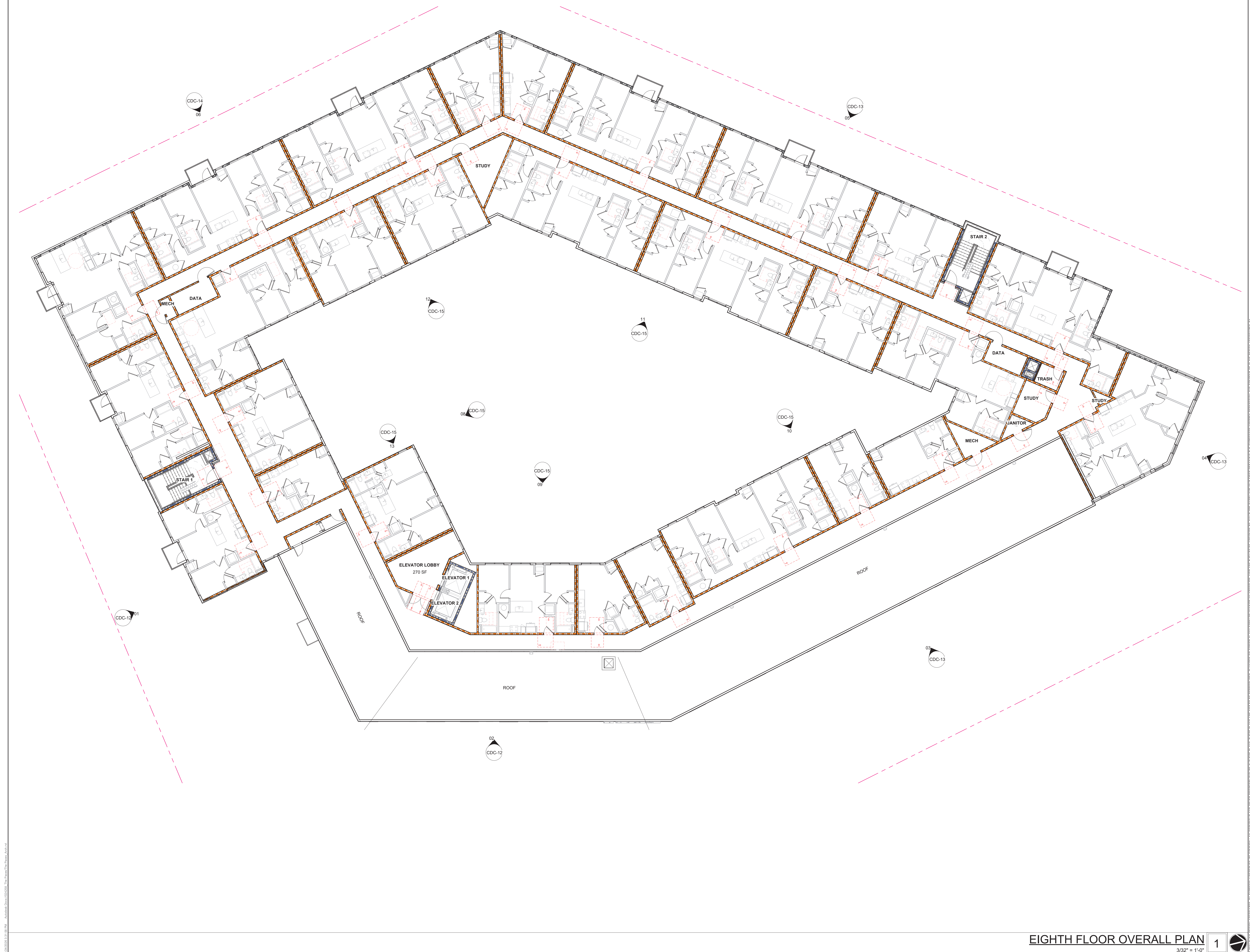
NOT FOR
CONSTRUCTION

FOR
REFERENCE
ONLY

PROJECT:	024258
DATE:	03.11.2026
REVISIONS:	DATE

*DR = PERMIT, RR = RFI, # = REVISION
DRAWN BY:
CHECKED BY:

EIGHTH FLOOR
OVERALL PLAN



03/11/2026 11:51:08 AM - Autodesk® AutoCAD® 2026 - ThePacesThePaces.dwg
 03/11/2026 11:51:08 AM - Autodesk® AutoCAD® 2026 - ThePacesThePaces.dwg

ALL RIGHTS RESERVED. THIS DOCUMENT IS THE PROPERTY OF CLINE DESIGN ASSOCIATION, INC. AND IS NOT TO BE REPRODUCED, COPIED, OR TRANSMITTED IN ANY FORM OR BY ANY MEANS, WITHOUT THE EXPRESS WRITTEN PERMISSION AND CONSENT OF CLINE DESIGN ASSOCIATION, INC.



EAST ELEVATION (MLK BLVD) 02
3/32" = 1'-0"



SOUTH ELEVATION (E LONGVIEW DR) 01
3/32" = 1'-0"

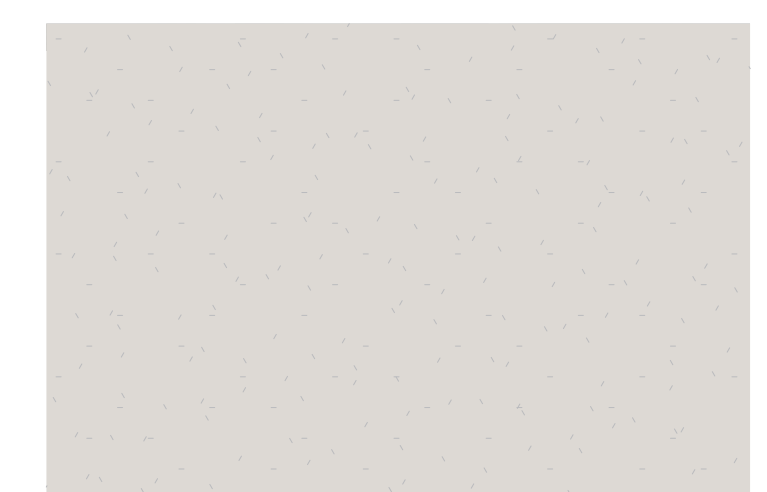
MATERIAL LEGEND



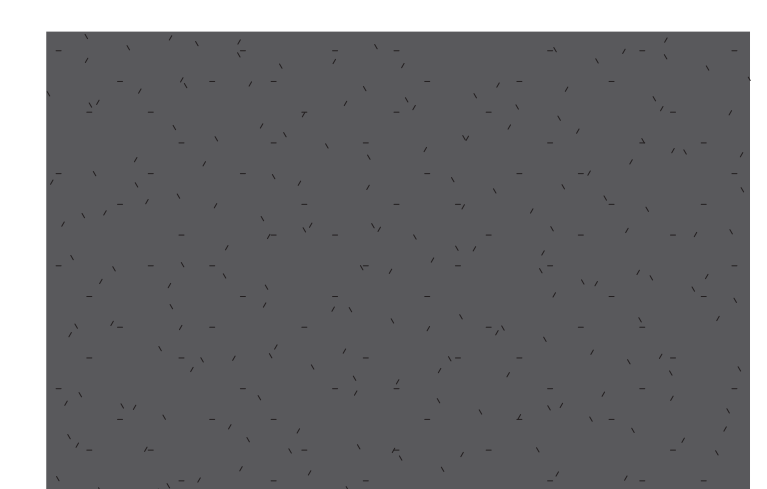
BRICK 1



FIBER CEMENT SIDING 1



FIBER CEMENT SIDING 1



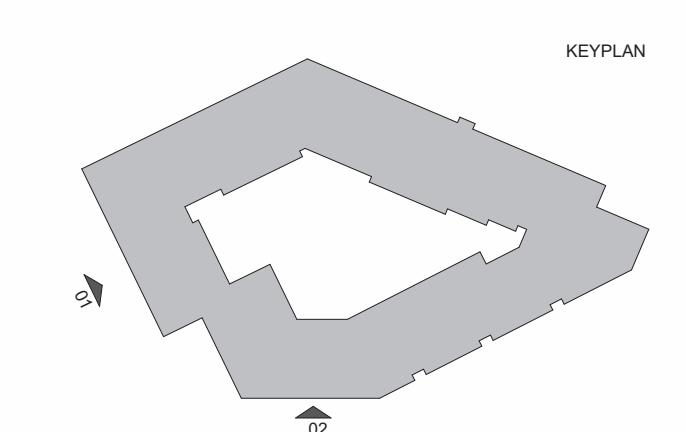
FIBER CEMENT SIDING 2



DARK BRONZE PAINT

MATERIAL:	CLR:	DESCRIPTION:
M01	R	RUNNING BOND BRICK; US BRICK - STERLING VELOUR; QUEEN
M07	R	BRICK ROWLOCK; US BRICK - STERLING VELOUR; QUEEN
M08	R	BRICK SOLDIER HEADER; US BRICK - STERLING VELOUR; QUEEN
M08	R	SOLDIER ROWLOCK
M08	R	SOLDIER HEADER
M21	C01	FIBER CEMENT LAP SIDING 6" EXPOSURE
M25	C02	FIBER CEMENT REVEAL SYSTEM W/ ALUM REVEAL TRANSITIONS
M25	C03	FIBER CEMENT REVEAL SYSTEM W/ ALUM REVEAL TRANSITIONS
M29	C03	BALCONY FASCIA; 4/5x8 TRIM BOARD & 5/4x6 TRIM BOARD
M30	DKB	SINGLE SKIN METAL PANEL; MORIN CLASSIC Z-12; DARK BRONZE
M50	DKB	VINYL WINDOW
M51	DKB	HOLLOW METAL DOOR; PTD; REFER TO DOOR SCHEDULE FOR ADDITIONAL INFO
M53	DKB	ALUMINUM STOREFRONT SYSTEM; OLDCASTLE TCR-250; DARK BRONZE
M55	GL1	CLEAR GLASS
M56	DKB	ALUMINUM LOUVERS; REFER TO MECHANICAL DRAWINGS FOR ADDITIONAL INFORMATION
M60	DKB	METAL RAILING - DARK BRONZE
M60	C01	BALCONY RAILING
M61	C01	DOWNSPOUTS & COLLECTORS
M62	DKB	METAL COPING; DARK GREY
M65	DKB	PREFABRICATED METAL CANOPY
M66	CA	CABLE RAIL @ GARAGE OPENINGS; TO MATCH CLEAR ANODIZED; REFER TO STRUCTURAL FOR CRASH BARRIER REQUIREMENTS
M68		BUILDING SIGNAGE
M68		BUILDING SIGNAGE

KEY PLAN



NOT FOR CONSTRUCTION

FOR REFERENCE ONLY

PROJECT: 024258
DATE: 03.11.2026
REVISIONS: DATE

*DL = PERMIT, RL = RFL, # = REVISION
DRAWN BY: Author
CHECKED BY: Checker

EXTERIOR ELEVATIONS



NORTHWEST ELEVATION 05

3/32" = 1'-0"

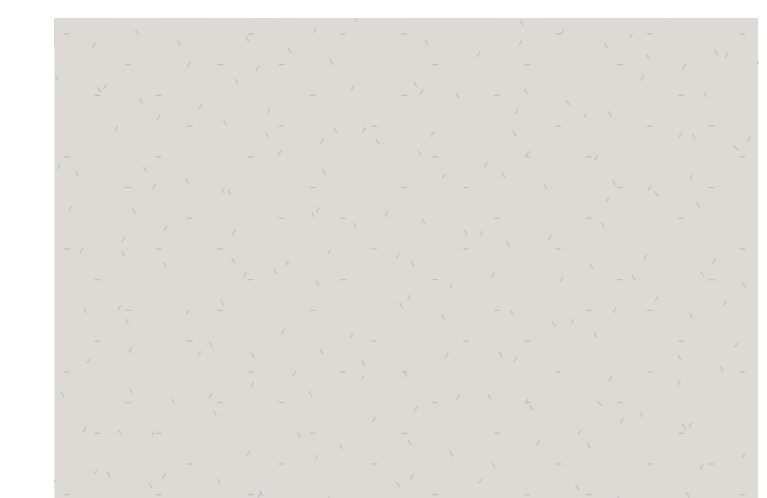
MATERIAL LEGEND



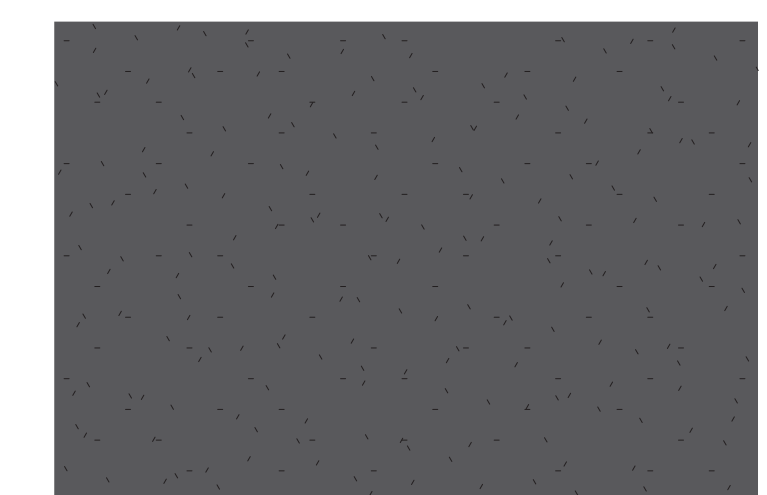
BRICK 1



FIBER CEMENT SIDING 1



FIBER CEMENT SIDING 1



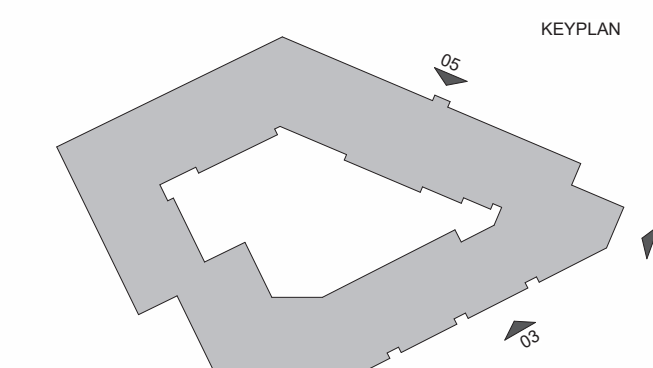
FIBER CEMENT SIDING 2



DARK BRONZE PAINT

MATERIAL:	CLR:	DESCRIPTION:
M01	R	RUNNING BOND BRICK; US BRICK - STERLING VELOUR; QUEEN
M07	R	BRICK ROWLOCK; US BRICK - STERLING VELOUR; QUEEN
M08	R	BRICK SOLDIER HEADER; US BRICK - STERLING VELOUR; QUEEN
M08	R	SOLDIER HEADER
M21	C01	FIBER CEMENT LAP SIDING 6" EXPOSURE
M25	C02	FIBER CEMENT REVEAL SYSTEM W/ ALUM REVEAL TRANSITIONS
M25	C03	FIBER CEMENT REVEAL SYSTEM W/ ALUM REVEAL TRANSITIONS
M29	C03	BALCONY FASCIA; 4/5x8 TRIM BOARD & 5/4x8 TRIM BOARD
M30	DKB	SINGLE SKIN METAL PANEL; MORIN CLASSIC Z-12; DARK BRONZE
M50	DKB	VINYL WINDOW
M51	DKB	HOLLOW METAL DOOR; PTD; REFER TO DOOR SCHEDULE FOR ADDITIONAL INFO
M53	DKB	ALUMINUM STOREFRONT SYSTEM; OLDCASTLE TCR-250; DARK BRONZE
M55	GL1	CLEAR GLASS
M58	DKB	ALUMINUM LOUVERS; REFER TO MECHANICAL DRAWINGS FOR ADDITIONAL INFORMATION
M60	DKB	METAL RAILING - DARK BRONZE
M60	C01	BALCONY RAILING
M61	C01	DOWNSPOUTS & COLLECTORS
M62	DKB	METAL COPING; DARK GREY
M65	DKB	PREFABRICATED METAL CANOPY
M66	CA	CABLE RAIL @ GARAGE OPENINGS; TO MATCH CLEAR ANODIZED; REFER TO STRUCTURAL FOR CRASH BARRIER REQUIREMENTS
M68		BUILDING SIGNAGE
M68		BUILDING SIGNAGE

KEY PLAN



NORTHEAST ELEVATION 03

3/32" = 1'-0"



NORTH ELEVATION 04

3/32" = 1'-0"

NOT FOR CONSTRUCTION

FOR REFERENCE ONLY

PROJECT: 024258
DATE: 03.11.2026
REVISIONS: DATE

EXTERIOR ELEVATIONS



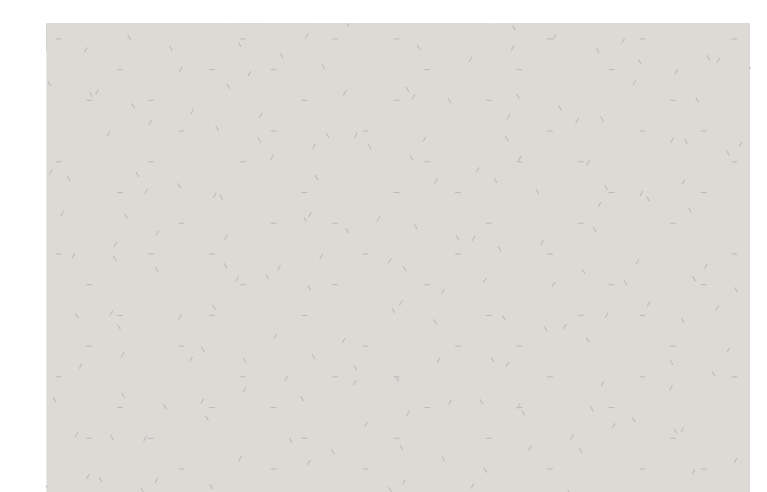
MATERIAL LEGEND



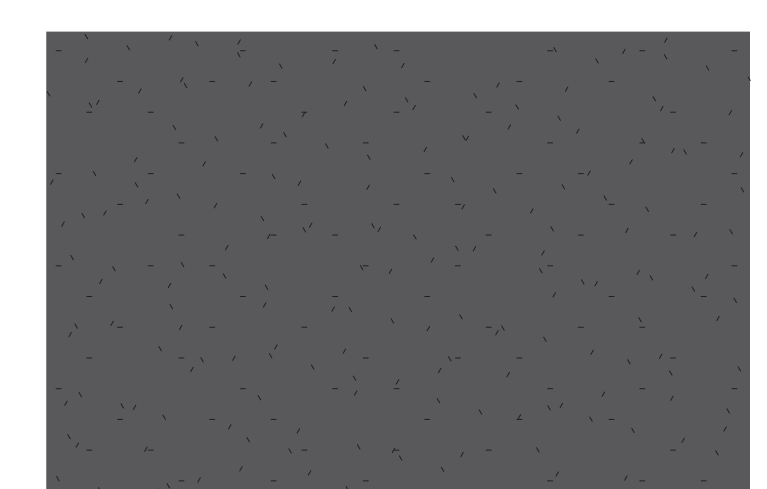
BRICK 1



FIBER CEMENT SIDING 1



FIBER CEMENT SIDING 1



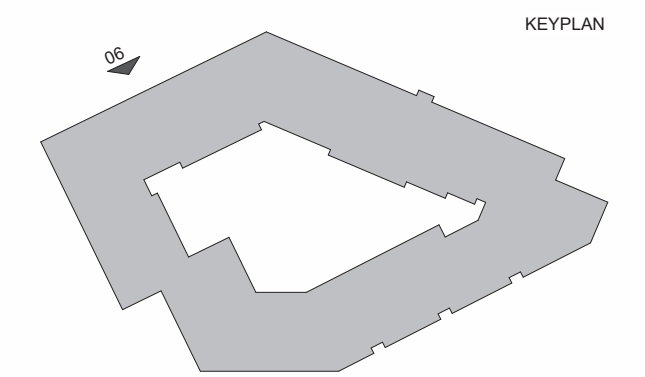
FIBER CEMENT SIDING 2



DARK BRONZE PAINT

MATERIAL:	CLR:	DESCRIPTION:
M01	R	RUNNING BOND BRICK; US BRICK - STERLING VELOUR; QUEEN
M07	R	BRICK ROWLOCK; US BRICK - STERLING VELOUR; QUEEN
M07	R	SOLDIER ROWLOCK
M08	R	BRICK SOLDIER HEADER; US BRICK - STERLING VELOUR; QUEEN
M08	R	SOLDIER HEADER
M21	CO1	FIBER CEMENT LAP SIDING 6" EXPOSURE
M25	CO2	FIBER CEMENT REVEAL SYSTEM W/ ALUM REVEAL TRANSITIONS
M25	CO3	FIBER CEMENT REVEAL SYSTEM W/ ALUM REVEAL TRANSITIONS
M29	CO3	BALCONY FASCIA; 4/5x8 TRIM BOARD & 5/4x6 TRIM BOARD
M30	DKB	SINGLE SKIN METAL PANEL; MORIN CLASSIC Z-12; DARK BRONZE
M50	DKB	VINYL WINDOW
M51	DKB	HOLLOW METAL DOOR; PTD; REFER TO DOOR SCHEDULE FOR ADDITIONAL INFO
M53	DKB	ALUMINUM STOREFRONT SYSTEM; OLDCASTLE TCR-250; DARK BRONZE
M55	GL1	CLEAR GLASS
M56	DKB	ALUMINUM LOUVERS; REFER TO MECHANICAL DRAWINGS FOR ADDITIONAL INFORMATION
M60	DKB	METAL RAILING - DARK BRONZE
M60	CO1	BALCONY RAILING
M61	CO1	DOWNSPOUTS & COLLECTORS
M62	DKB	METAL COPING; DARK GREY
M65	DKB	PREFABRICATED METAL CANOPY
M66	CA	CABLE RAIL @ GARAGE OPENINGS; TO MATCH CLEAR ANODIZED; REFER TO STRUCTURAL FOR CRASH BARRIER REQUIREMENTS
M68		BUILDING SIGNAGE
M68		BUILDING SIGNAGE

KEY PLAN



NOT FOR CONSTRUCTION

FOR REFERENCE ONLY

PROJECT:	024258
DATE:	03.11.2026
REVISIONS:	DATE

*P# = PERMIT, R# = RFL, # = REVISION
DRAWN BY: Author
CHECKED BY: Checker

EXTERIOR ELEVATIONS



NORTH COURTYARD ELEVATION 08
3/32" = 1'-0"



NORTHWEST COURTYARD EL 09
3/32" = 1'-0"



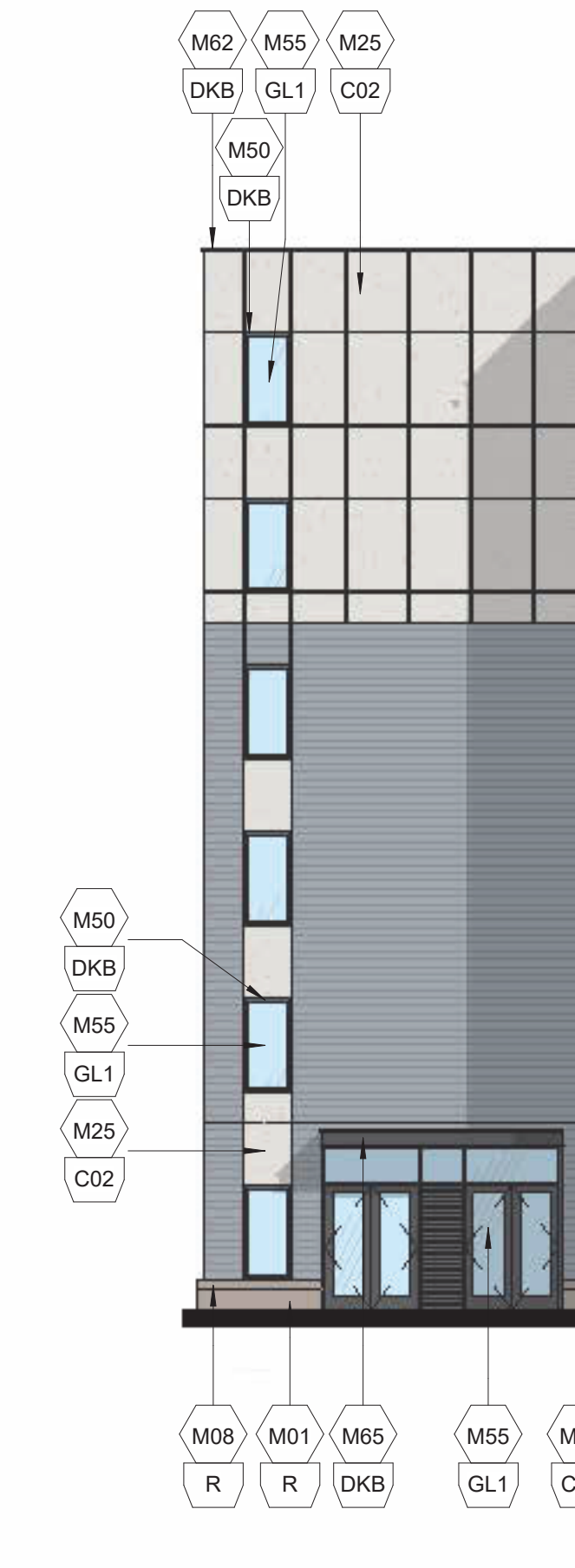
WEST COURTYARD ELEVATION 10
3/32" = 1'-0"



SOUTHEAST COURTYARD ELEVATION 11
3/32" = 1'-0"

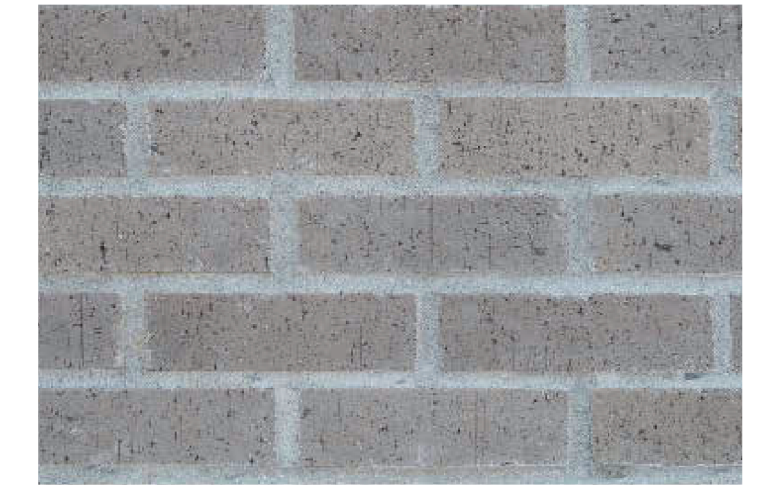


EAST COURTYARD ELEVATION 12
3/32" = 1'-0"



WEST COURTYARD EL 13
3/32" = 1'-0"

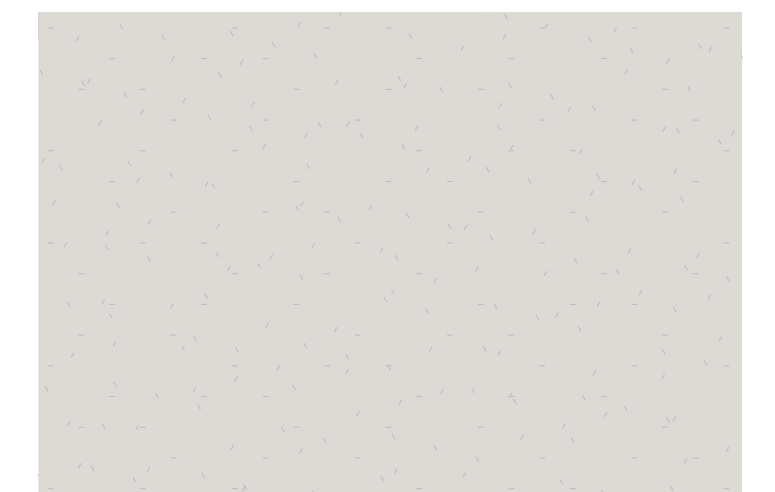
MATERIAL LEGEND



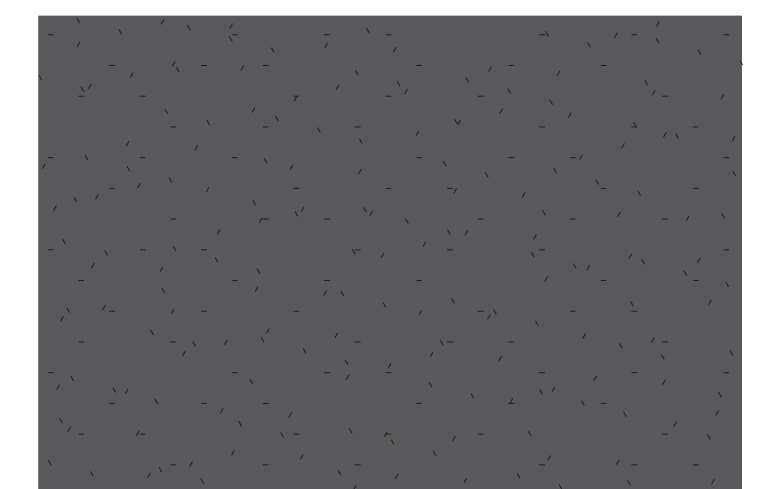
BRICK 1



FIBER CEMENT SIDING 1



FIBER CEMENT SIDING 1



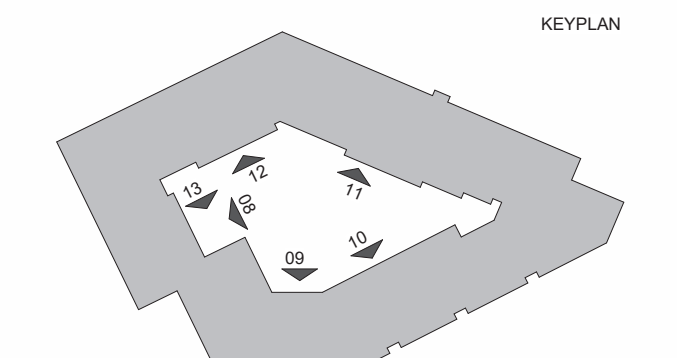
FIBER CEMENT SIDING 2



DARK BRONZE PAINT

MATERIAL:	CLR:	DESCRIPTION:
M01	R	RUNNING BOND BRICK; US BRICK - STERLING VELOUR; QUEEN
M07	R	BRICK ROWLOCK; US BRICK - STERLING VELOUR; QUEEN
M08	R	BRICK SOLDIER HEADER; US BRICK - STERLING VELOUR; QUEEN
M08	R	SOLDIER ROWLOCK
M21	C01	FIBER CEMENT LAP SIDING 6" EXPOSURE
M25	C02	FIBER CEMENT REVEAL SYSTEM W/ ALUM REVEAL TRANSITIONS
M25	C03	FIBER CEMENT REVEAL SYSTEM W/ ALUM REVEAL TRANSITIONS
M29	C03	BALCONY FASCIA; 4/5x8 TRIM BOARD & 5/4x6 TRIM BOARD
M30	DKB	SINGLE SKIN METAL PANEL; MORIN CLASSIC Z-12; DARK BRONZE
M50	DKB	VINYL WINDOW
M51	DKB	HOLLOW METAL DOOR; PFD; REFER TO DOOR SCHEDULE FOR ADDITIONAL INFO
M53	DKB	ALUMINUM STOREFRONT SYSTEM; OLDCASTLE TCR-250; DARK BRONZE
M55	GL1	CLEAR GLASS
M58	DKB	ALUMINUM LOUVERS; REFER TO MECHANICAL DRAWINGS FOR ADDITIONAL INFORMATION
M60	DKB	METAL RAILING - DARK BRONZE
M60	C01	BALCONY RAILING
M61	C01	DOWNSPOUTS & COLLECTORS
M62	DKB	METAL COPING; DARK GREY
M65	DKB	PREFABRICATED METAL CANOPY
M66	CA	CABLE RAIL @ GARAGE OPENINGS; TO MATCH CLEAR ANODIZED; REFER TO STRUCTURAL FOR CRASH BARRIER REQUIREMENTS
M68		BUILDING SIGNAGE
M68		BUILDING SIGNAGE

KEY PLAN



NOT FOR CONSTRUCTION

FOR REFERENCE ONLY

PROJECT: 024258
DATE: 03.11.2026
REVISIONS: DATE

*P# = PERMIT, R# = RFL, # = REVISION
DRAWN BY: Author
CHECKED BY: Checker

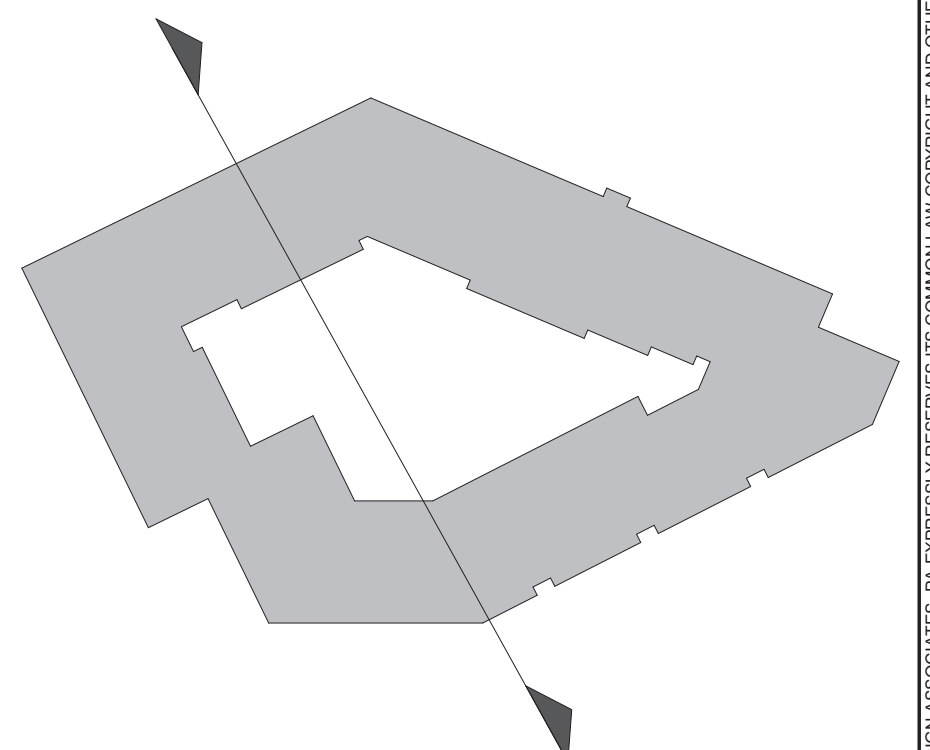
COURTYARD ELEVATIONS

LCD ACQUISITIONS, LLC
 THE PACES
 701 MARTIN LUTHER KING JR BOULEVARD
 CHAPEL HILL, NC 27516
 © 2026 CLINE DESIGN ASSOCIATES, ALL RIGHTS RESERVED. THIS DOCUMENT IS THE PROPERTY OF CLINE DESIGN ASSOCIATES. NO PART OF THIS DOCUMENT IS TO BE REPRODUCED, COPIED, OR TRANSMITTED IN ANY FORM OR BY ANY MEANS, ELECTRONIC OR MECHANICAL, WITHOUT THE EXPRESS WRITTEN PERMISSION AND CONSENT OF CLINE DESIGN ASSOCIATES, PA.



Below-Grade Parking Level

Activated Street Frontage & Public Plaza



NOT FOR CONSTRUCTION

FOR REFERENCE ONLY

PROJECT:	024258
DATE:	03.11.2026
REVISIONS:	DATE

*P# = PERMIT, R# = RFL, # = REVISION
DRAWN BY: Author
CHECKED BY: Checker

OVERALL SECTION