

Long-Range Water Supply Plan Update: Information to Chapel Hill Town Council

Ruth Rouse, Planning and Development Manager

April 27, 2022



Carrboro-Chapel Hill's not-for-profit public service agency delivering high quality water, wastewater, and reclaimed water services.

Draft

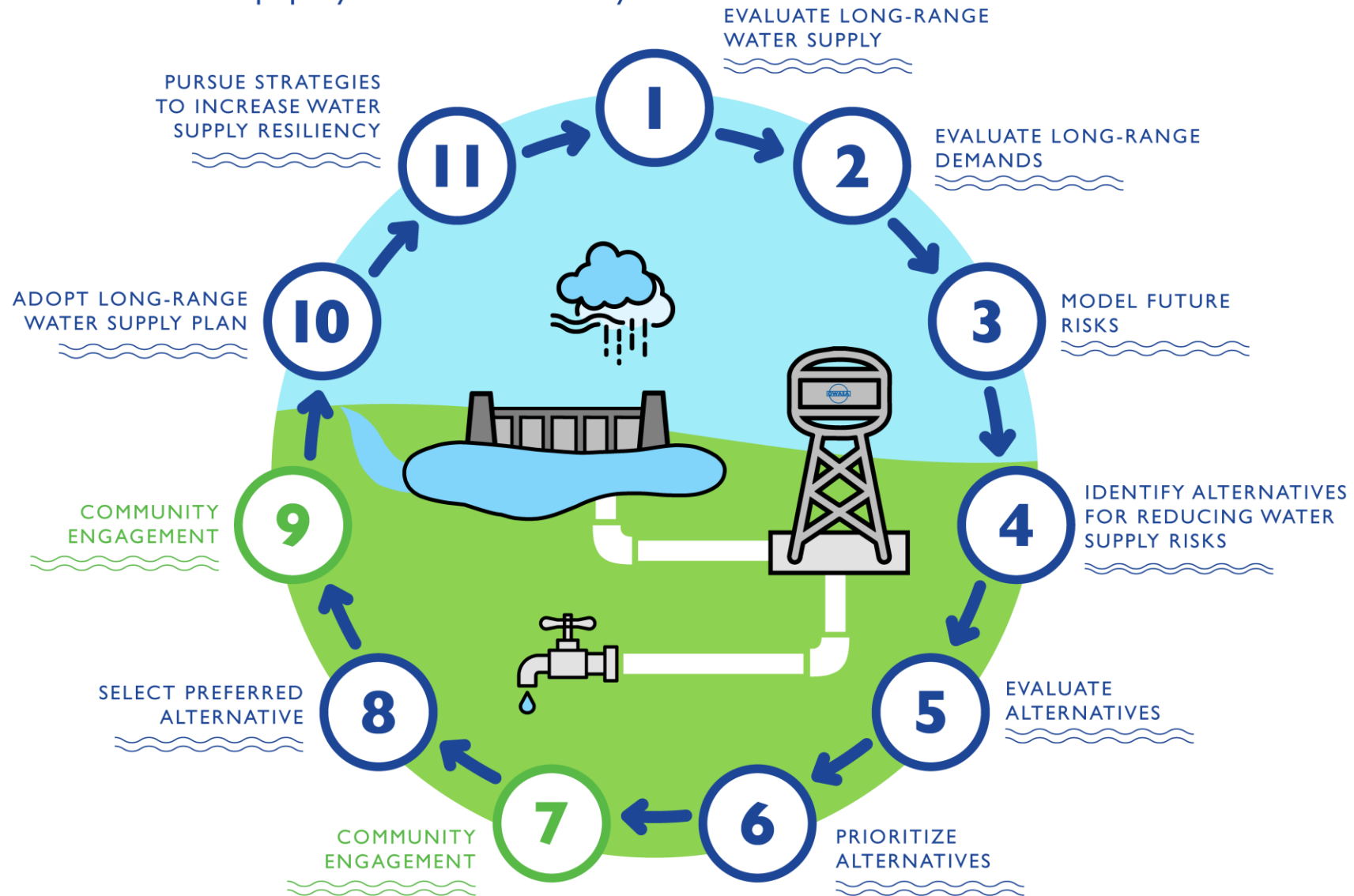
Key Messages

- We have a low risk of running out of water.
- Our largest vulnerability is in extended drought.
- After methodical and inclusive process, Jordan Lake is best option to augment our current supplies.
- A group of local utilities is partnering to design and build new treatment facilities on Jordan Lake.



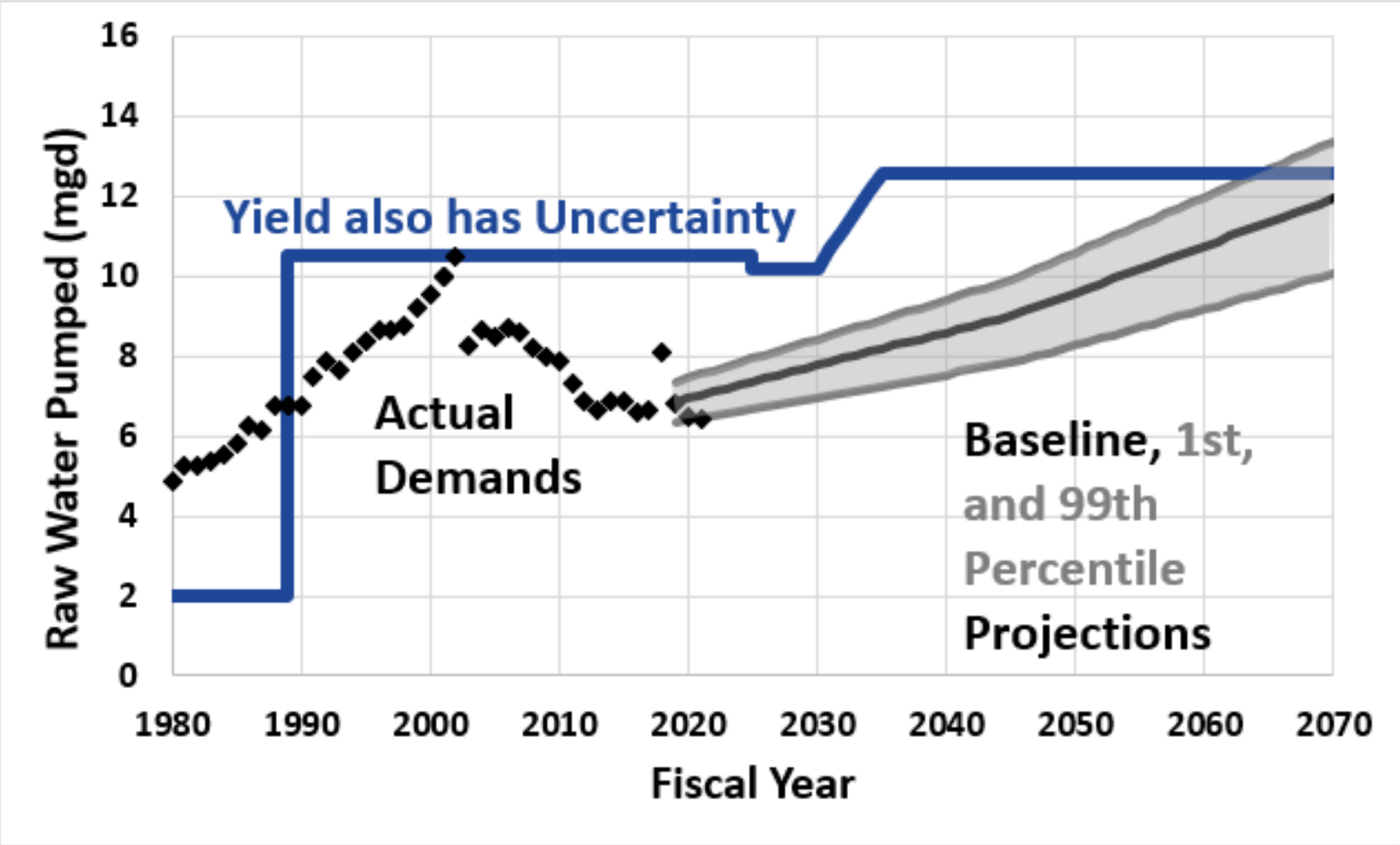
Water

Ensuring Long-Range Water Supply Resiliency



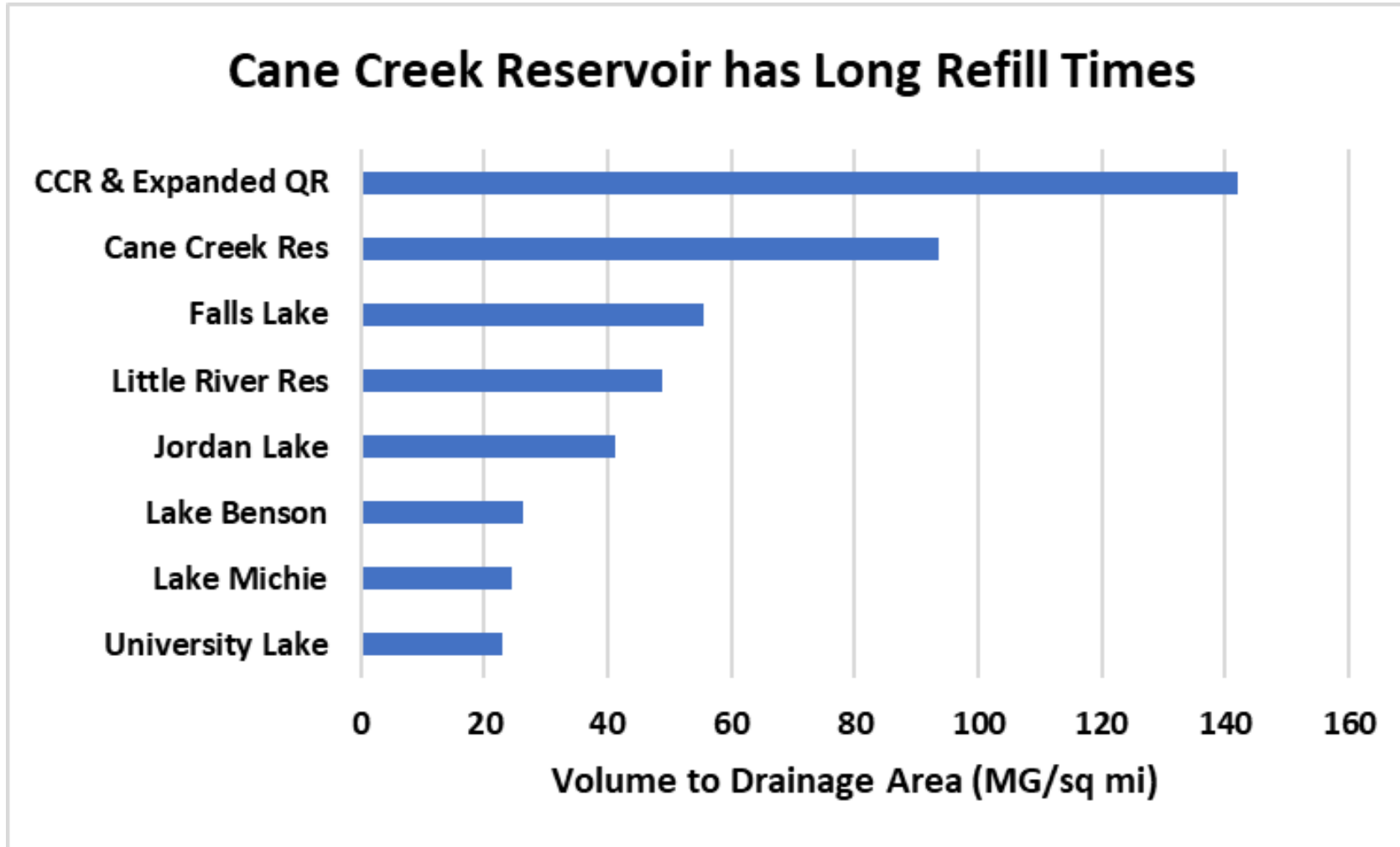
Draft

Our Planned Water Supply Meets Demands Under Most Conditions



Draft

Our Current Water Supply Risk is the Long Refill Time of Cane Creek Reservoir



Draft

1970

1995

2020

2045

2070

University Lake: 450 million gallons

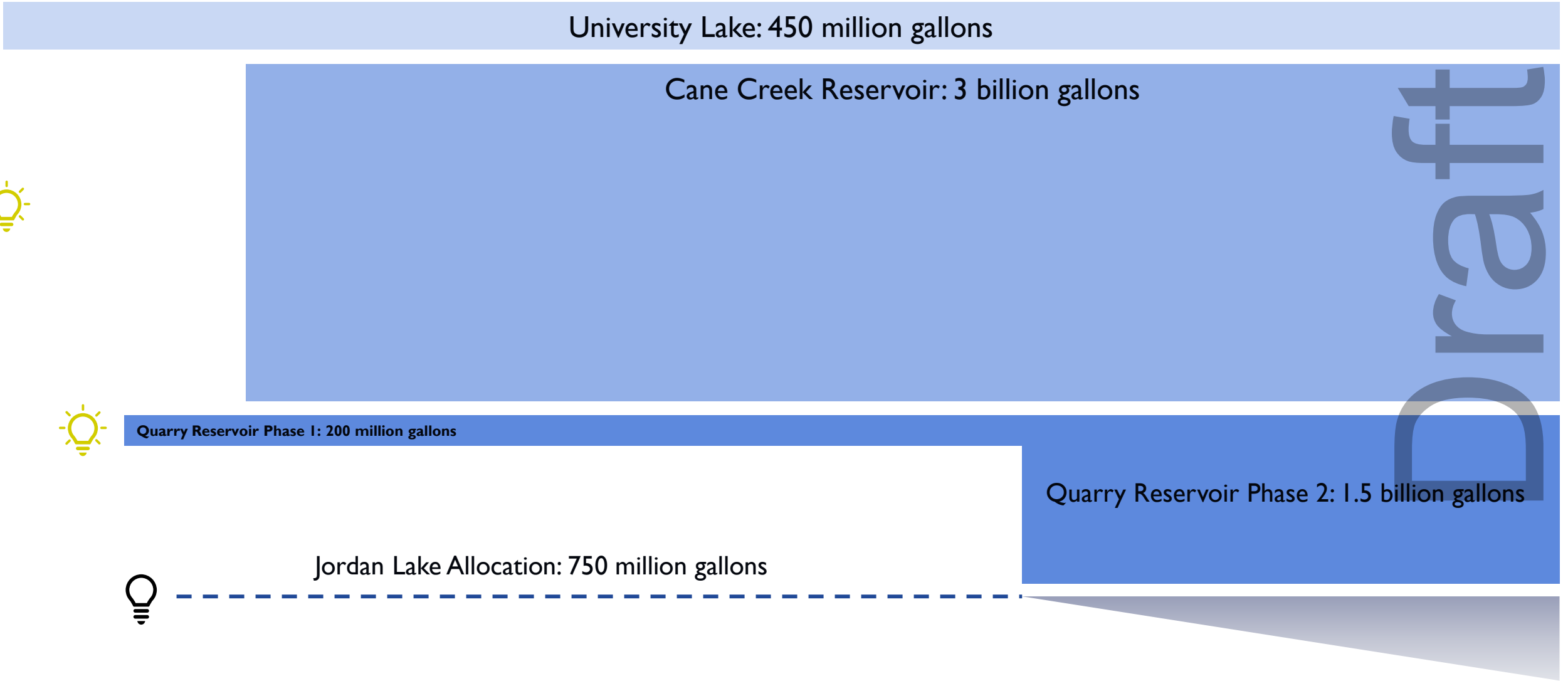
Cane Creek Reservoir: 3 billion gallons

Quarry Reservoir Phase 1: 200 million gallons

Quarry Reservoir Phase 2: 1.5 billion gallons

Jordan Lake Allocation: 750 million gallons

Draft



Jordan Lake Water Quality

- Hundreds of thousands of people drink treated water from Jordan Lake daily
- Reviewed drinking water quality from Cary and Chatham County
- Drinking water from Jordan Lake meets all state and federal criteria
- Proposed WTP being designed to remove contaminants of emerging concern



Process for Narrowing Alternatives

Community Engagement

Options Eliminated

All supply and demand management possibilities

Alternatives with potential

Best alternatives

Jordan Lake alternatives

TBD

- None

- Groundwater
- Stormwater
- Some demand side management

- Demand side management
- Indirect potable reuse

- Direct potable reuse
- Deep Quarry

- TBD



* Direct outreach



Western Intake Partnership (WIP)

- City of Durham, Chatham County, and Town of Pittsboro
- Working since 2014 on regional approach
- Plans to build new Drinking Water Treatment Plant
 - Phase 1: 2031
 - Phase 2: 2050
- OWASA beginning discussions with WIP



Interests in Western Intake Partnership Discussions

- OWASA has access to its Jordan Lake allocation.
- We maintain our allocation of Jordan Lake water.
- Intake and transmission infrastructure are built to meet OWASA's demands.
- Impact on near-term water rates is minimized.
- Our working relationships with our utility partners are important to OWASA, and we are committed to maintaining them.
- We share with those partners a commitment to providing our customers high quality drinking water.

Draft

Questions and Discussion

- Do you have any questions on our long-range water supply planning process?
- What feedback would you like shared with the OWASA Board of Directors regarding our Long-Range Water Supply Plan?
- Other?

Ruth Rouse

rrouse@owasa.org

