



**SECU Family House
Expansion
Special Use Permit Modification
123 Old Mason Farm Road**

**Business Meeting
January 17, 2017**

DRAFT

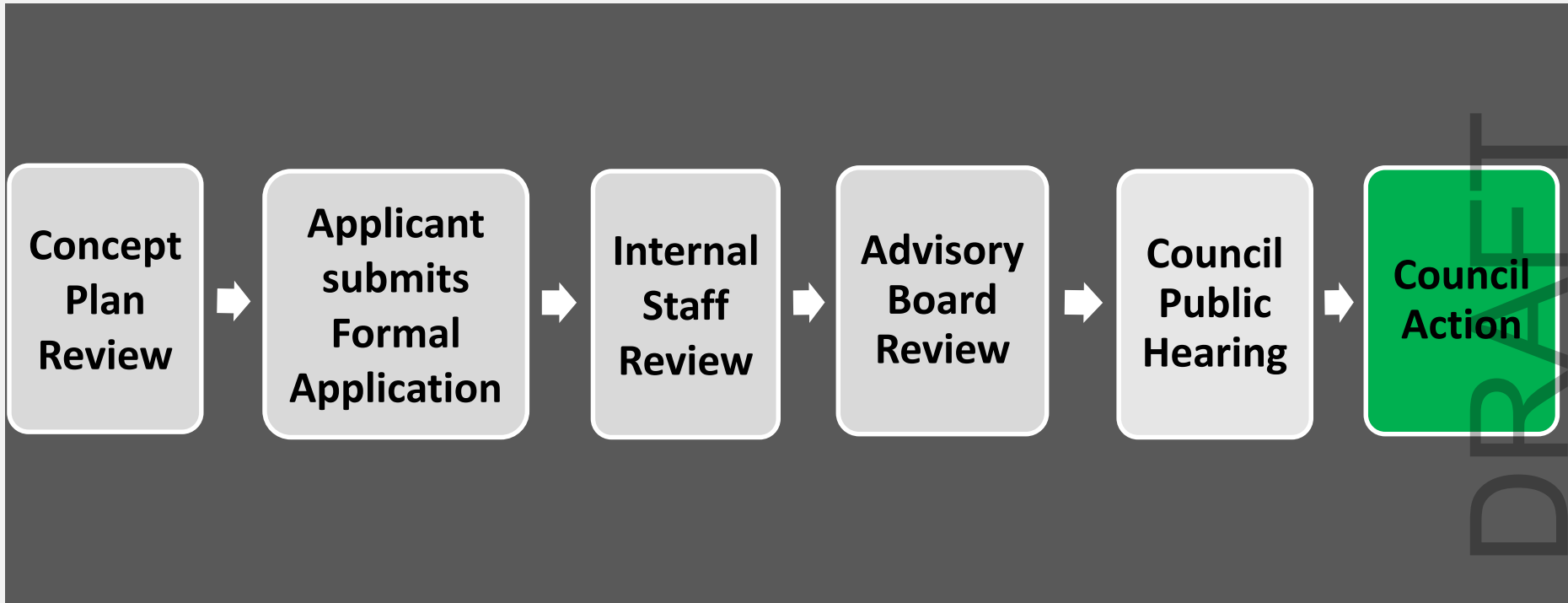
Recommendation - SECU Family House Expansion



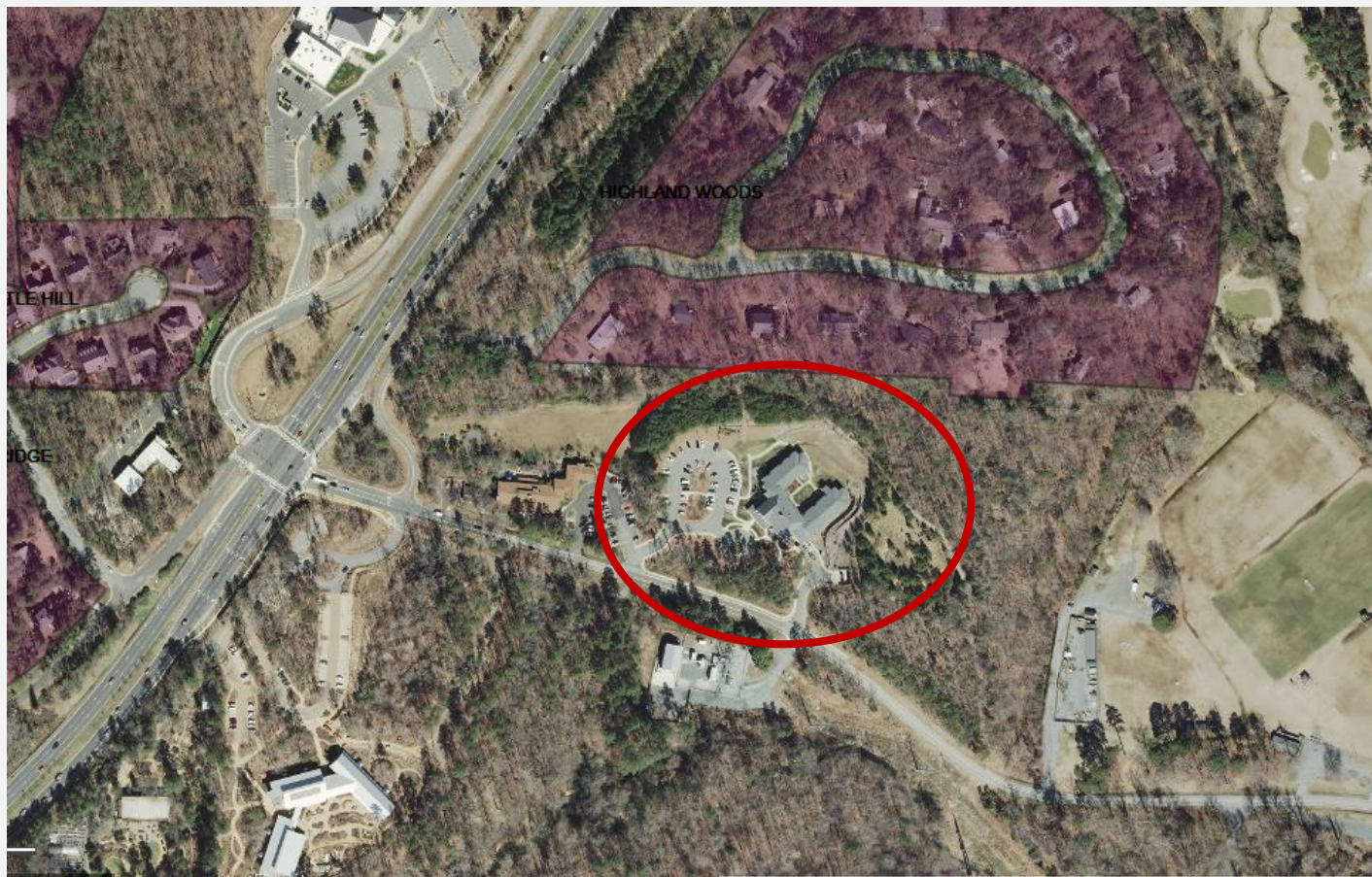
- That the Council
- open the Public Hearing
 - Hear testimony
 - Approve the Application

DRAFT

Process - SECU Family House Expansion



Aerial Map - SECU Family House Expansion



DRAFT

Site Plan - SECU Family House Expansion



DRAFT

- 1. 28,000 sq. ft. addition;**
- 2. Landscape Buffer Modifications**
- 3. Parking Modifications:**
 - 52 new vehicular spaces**
 - 12 bicycle spaces**

DRAFT

Modifications – SECU Family House Expansion

Modification Request	Ordinance Standards	Approval
All Landscape Buffers	Less plants and width	Council Approval
Vehicle Parking	Less parking	Council Approval
Bicycle Parking	Less parking	Council Approval

SECRET

- Provide a bus shelter
- Conditions added to Lighting Plan
- Conditions added to Construction Management Plan
- State approval rather than County

DRAFT

Recommendation - SECU Family House Expansion



- That the Council
- open the Public Hearing
 - Hear testimony
 - Approve the Special Use Permit Modification.

DRAFT