

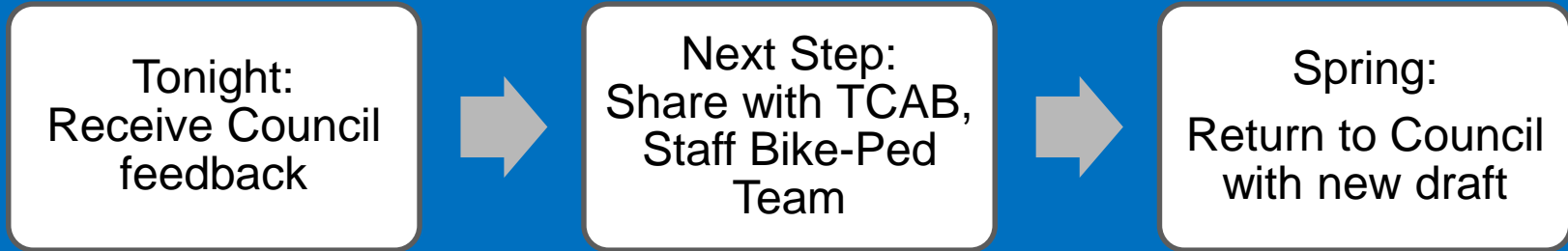


Connected
Community
Strategic Goal

Goal Champions: Bergen Watterson and Donnie Rhoads
10-24-2018 Council Business Meeting Presentation

BR
W
A
T
T
E
R
S
O
N

Feedback and Next Steps



DRAFT

Connected

Community

Team

- Police
- Planning
- Public Works – Traffic Engineering
- Public Works – Streets and Sidewalk
- Parking
- Parks and Recreation
- Transit

DRAFT

Presentation

Overview

1. Background and Context
2. Connected Community Report
3. Traffic

DRAFT

1.

Background



DRAFT

Strategic Plan

2017 Council Retreat

Council affirmed
Chapel Hill 2020
as community
vision

2018 Council Retreat

Council
considered 7
Strategic Goals

Affordable Housing Prototype

Council worked
on Affordable
Housing Goal

Budget Resolution

Council charge
to build out
Connected
Community
Goal

DRAFT



Connected Community Strategic Goal

To create a highly connected community where bicycling, walking, and transit are convenient, everyday choices for our neighborhoods, businesses, and public spaces.

Community

Survey Context

2018 Community Survey Priority Investments

- Overall Management of Traffic Flow
- Overall Quality of Public Parking

DRAFT

Current

Discussions

What Have We Heard So Far?

Final Preference Survey Question Results:



1. Making it easier to walk, bike or take transit
2. Enhancing parks and open space
3. Managing traffic
4. Providing affordable housing
5. Preserving our neighborhoods
6. Creating more jobs

DRAFT



Master Plan

TOWN OF CHAPEL HILL MOBILITY AND CONNECTIVITY PLAN



OCTOBER 2017

STEWART



DRAFT

2.

Connected
Community
Report

Work Plan and Measures



DRAFT

Report Purpose



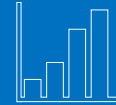
USER-FRIENDLY

Provide a user-friendly report that is clear, visual, and understandable



COMMUNITY INDICATORS

Provide context on an issue that the Council is interested in understanding



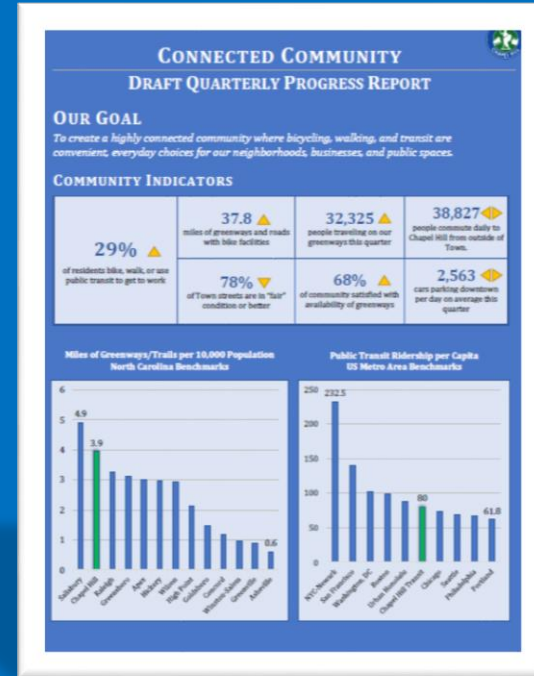
TRACKING PROGRESS

Provide performance measures that hold the Town accountable and track progress towards our goals

DRAFT

Page One:

- Goal
- Community Indicators



DRAFT

Page 2-3:

- Performance Measures

FY19 Performance-to-Date

Year-to-Date Metric on Streets, Traffic, Bike and Ped, and Greenways Activities

Streets & Traffic	Bike & Ped	Greenways	Total
X service requests	X service requests	X service requests	X service requests
X% of service requests resulting in improvements	X% of service requests resulting in improvements	X% of service requests resulting in improvements	X% of service requests resulting in improvements

Year-to-Date Progress Towards FY19 Project Milestones on Capital Projects that build Connected Community

	Projection
Streets & Traffic	Achieve 5 Milestones
Bike & Ped	
Greenways	

FY19 Q1 Connected Community Forecast: 2015 Bond Cashflow Projection on Capital Projects

Fiscal Year	Forecasted Cashflow
FY16	\$200,000
FY17	\$1,500,000
FY18	\$4,000,000

FY19 Performance-to-Date (continued)

Metric on Parking Revenue

Parking Revenue Trend: Percent of Projected Revenue Received as of FY Q1

Fiscal Year	Percent of Projected Revenue
FY16 Q1	19%
FY17 Q1	19%
FY18 Q1	17%
FY19 Q1	22%

ParkMobile App Usage Trend

Quarter over Quarter Growth

Quarter	Growth
FY18 Q1	120%
FY18 Q4	34%
FY18 Q3	23%
FY18 Q2	23%

Metric on Chapel Hill Transit

Chapel Hill Transit Ridership

Fiscal Year	Ridership
FY14	6,800,000
FY15	6,500,000
FY16	6,300,000
FY17	6,100,000
FY18	6,500,000

Environmental Footprint Trend

Carbon Dioxide Emissions in Metric Tons over

Fiscal Year	Emissions
FY18	6392.2
FY17	6179.1
FY16	6555.1

Connected Community - Draft Business Report 13

THE
WAY
WARD

Page 4-7:

- Work Plan

Strategic Projects	Notes	Status
Homestead Road Sidewalk	•	
Parking		
Management of current and expanded parking inventory	•	
Install and activate Smart City parking technology	•	
Complete necessary Wallase Deck repairs	•	
Implement Selected Improvements from Parking Study	•	
Create Downtown Ambassador Program	•	
Transit		
Chapel Hill Transit Service Development Plan	•	
Chapel Hill Transit Memorandum of Understanding	•	
Coordinate with GoTriangle and regional transportation planning	•	
North South Bus Rapid Transit - Development	•	
Short Range Transit Plan	•	

Notes & Citations:

- Community Indicators Section. The year goes up or down compared to the last year.
 - ▲ (the trend for the metric)
 - ▼ (the trend for the metric)
 - (the trend for the metric)
- Percentage of residents who bike walk. Community Survey, which is managed by Council in 2017, established a goal to
- Number of miles of greenways and rail and uses centerline rules. Bike facilities
- Percent of Town streets in fair condition which is managed by the Institute for Carolina Benchmarking Project, the TI average pavement rating. This metric is maintained by the North Carolina Dept.
- Number of people traveling on our green centers on the Town's greenways. TI are the only trails with pedestrian con

FY19 Q1 Update | Connected Community Work Plan

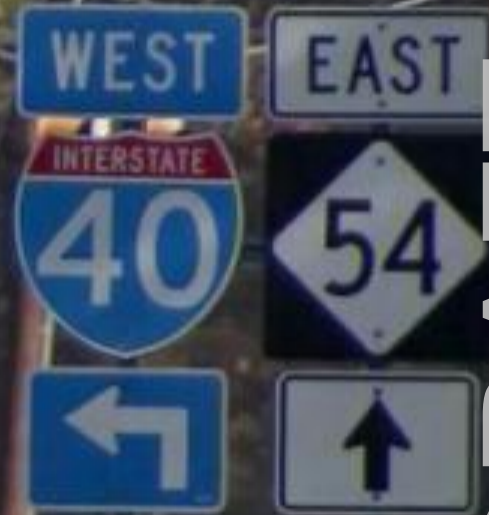
Strategic Projects	Notes	Status
Streets & Traffic		
Develop Connected Community report and traffic dashboard	•	
Biennial traffic signal study	•	
Targeted Traffic Calming	•	
Conduct Blue Hill Transportation Impact Analysis	•	
Holistic Evaluation of Existing Traffic Impact Analysis Processes and developing options for the Future	•	
Public-private partnerships to implement projects through the development review	•	
Extending Elliott Rd. from Fordham to Ephesus Church (Design)	•	
Friday Center Drive Reconstruction	•	
Hillsborough St. Reconstruction	•	
Assess street conditions	•	
Identify opportunities for street reconfiguration	•	
Annual Resurfacing Plan Implementation	•	
Respond to resident concerns/inquiries	•	
Bike - Ped		
Work to incorporate recommendations of the Greenways Master Plan into the Mobility Plan	•	
Examine Towns complete streets policy	•	
Explore bike-ped wayfinding program	•	
Road to Zero Pedestrian Safety Initiative	•	
Conduct Downtown Streets and Sidewalks Study	•	
Downtown Alley Renovations	•	
Downtown Streetscape (W. Franklin St., Merritt Mill Rd., Robertson St., Graham St.)	•	
Estes Drive Bike/Ped MLK to Caswell (construction)	•	
Estes Drive Ext. Bike/Ped MLK to Carberry (design)	•	
Old Durham Chapel Hill Road Bike/Ped	•	
Seawell School Road Sidewalk	•	
Ephesus Church Road Sidewalk	•	

DRAFT

3.

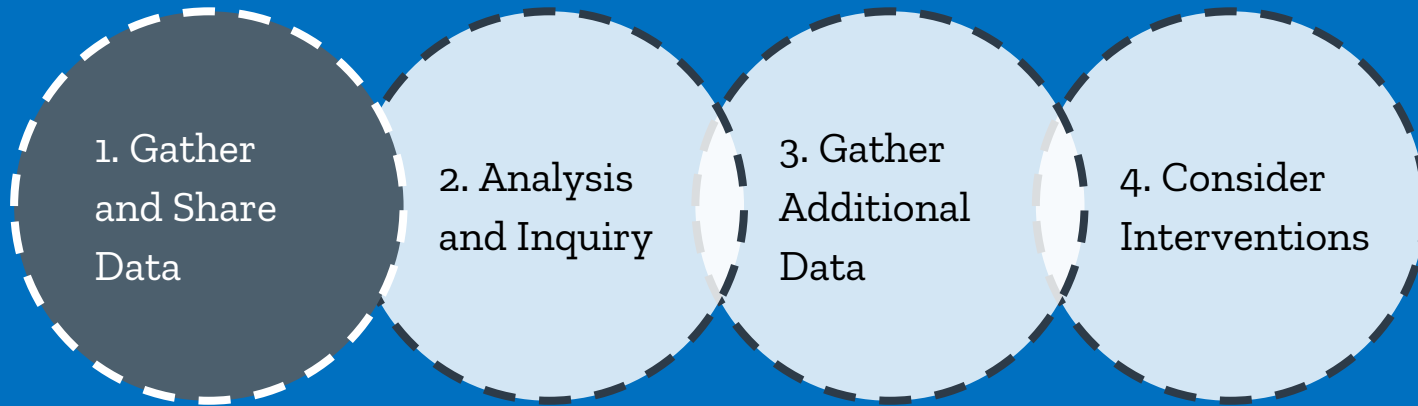
Traffic

Analysis and Next Steps



DRAFT

From Analysis to Solutions



DRAFT

Current Focus

1. Gather
and Share
Data

