

SOUTHERN ENERGY
MANAGEMENT
ENERGY EFFICIENCY & SOLAR POWER

Application for Certificate of Appropriateness

412 North Street Chapel Hill, NC 27514



- We are requesting approval of a solar photovoltaic and battery installation on the Southeast and Southwest segment of the property.

View From North Street



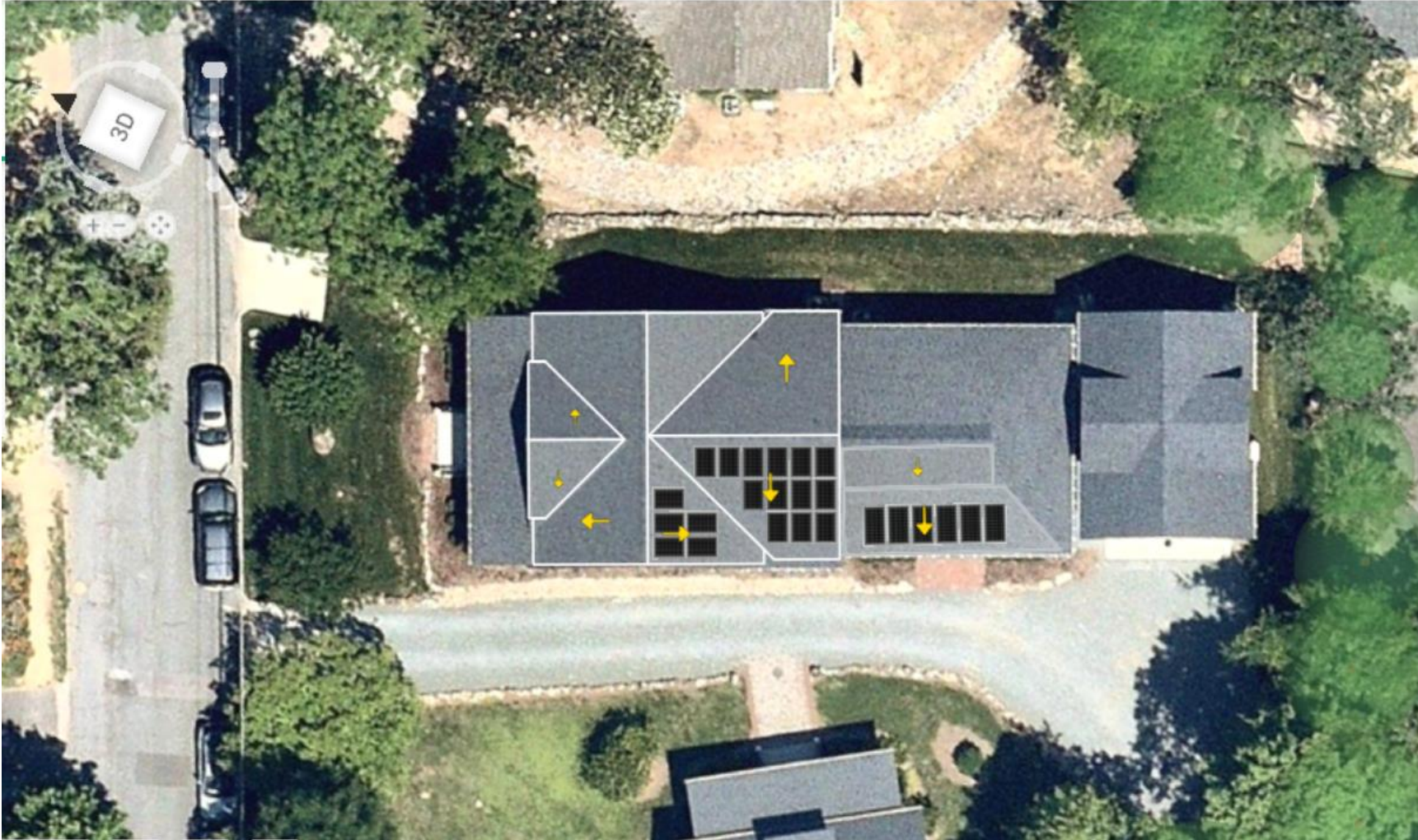
West Elevation View

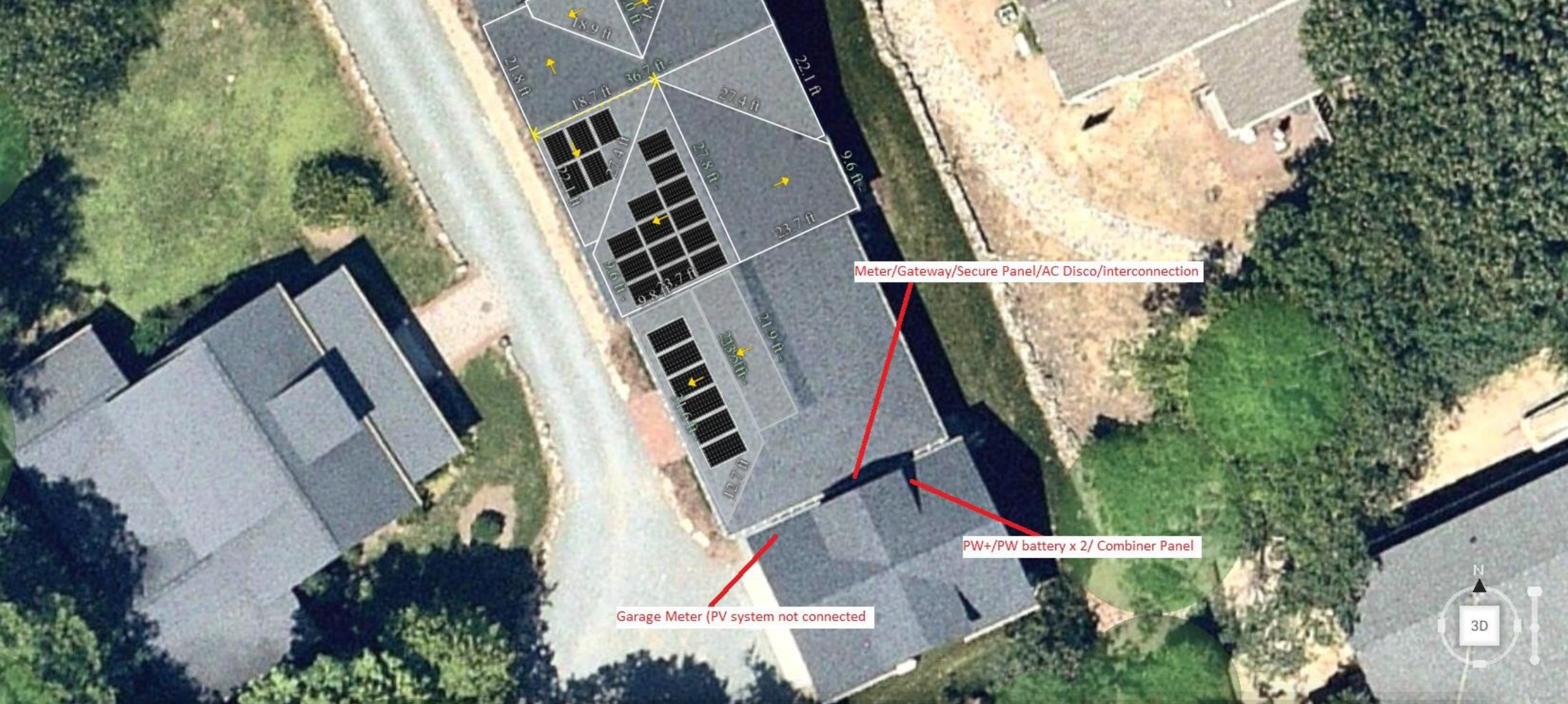


East Elevation View



Proposed Panel Location





Equipment Layout



Exterior Equipment layout





Exterior Equipment Used



powered by
Q.ANTUM / DUO Z

Q.PEAK DUO BLK ML-G10+
385-405
ENDURING HIGH PERFORMANCE

25
Year
Warranty

TOP BRAND PV
2021

Q CELLS
+ R&D

BREAKING THE 20% EFFICIENCY BARRIER
Q.ANTUM DUO Z Technology with zero gap cell layout boosts module efficiency up to 20.9%.

THE MOST THOROUGH TESTING PROGRAMME IN THE INDUSTRY
Q CELLS is the first solar module manufacturer to pass the most comprehensive quality programme in the industry: The new "Quality Controlled PV" of the independent certification institute TÜV Rheinland.

INNOVATIVE ALL-WEATHER TECHNOLOGY
Optimal yields, whatever the weather with excellent low-light and temperature behavior.

ENDURING HIGH PERFORMANCE
Long-term yield security with Anti LID Technology, Anti PID Technology*, Hot-Spot Protect and Traceable Quality Tra.Q™.

EXTREME WEATHER RATING
High-tech aluminum alloy frame, certified for high snow (5400 Pa) and wind loads (4000 Pa).

A RELIABLE INVESTMENT
Inclusive 25-year product warranty and 25-year linear performance warranty*.

* APT test conditions according to IEC/TS 62804-1:2015, method A (-1500V, 96h)
* See data sheet on rear for further information.

THE IDEAL SOLUTION FOR:
Roof-top arrays on residential buildings

Engineered in Germany

Q CELLS





Any Questions?



Thank you!
